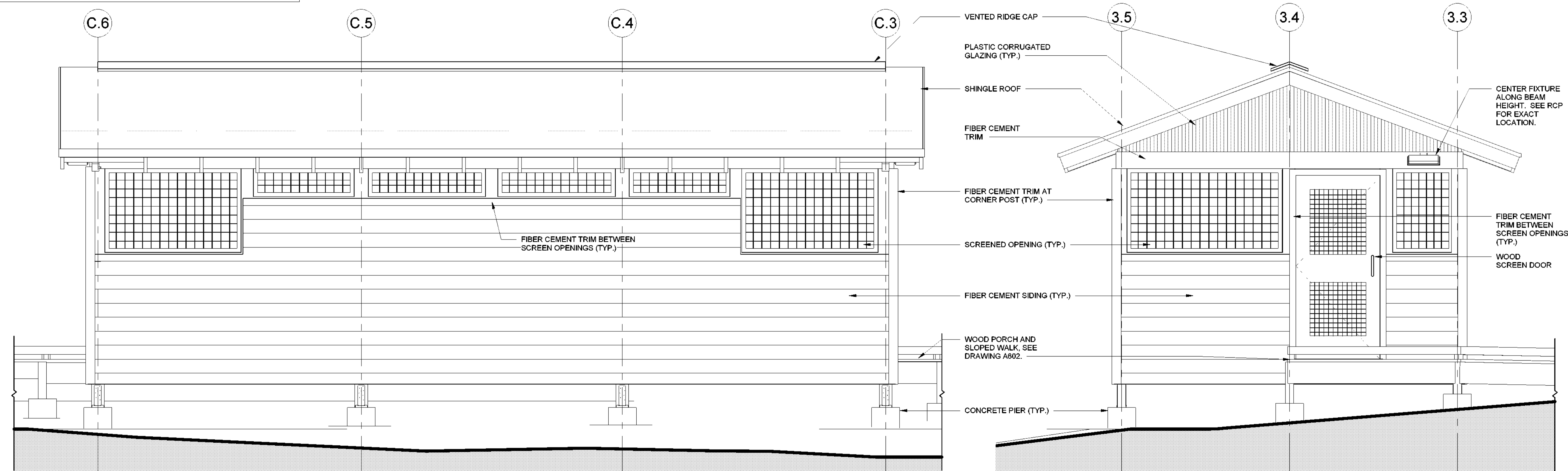
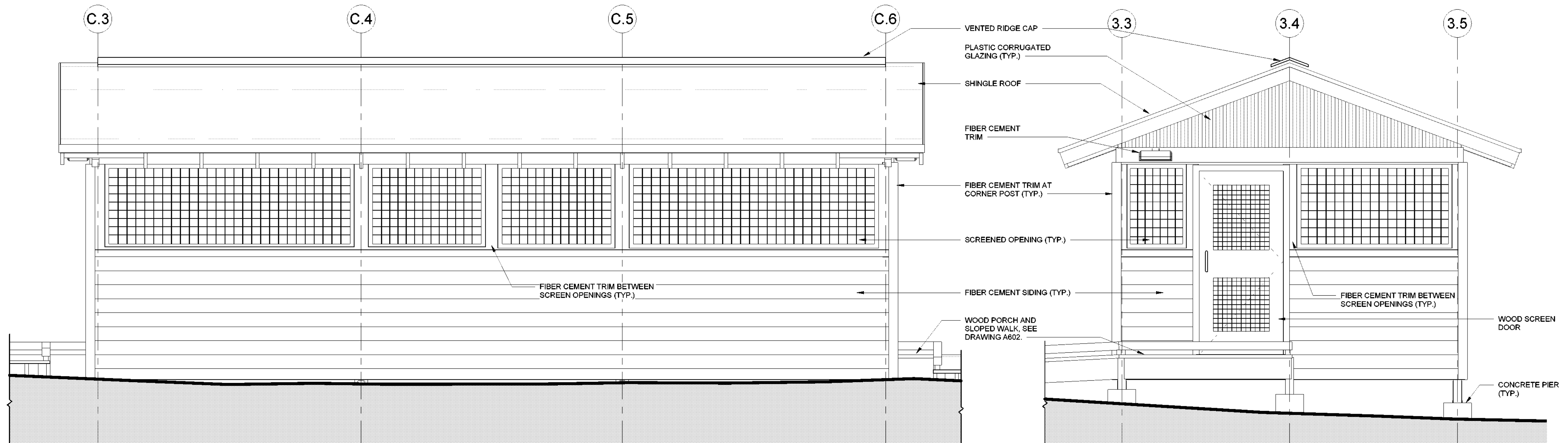


- LATRINE #427 GENERAL NOTES:**
- SEE DRAWING A602 FOR RAMP DETAILS.
  - ALL EXPOSED WOOD FRAMING, ROOF DECKING, SIDING, AND TRIM (NON PRESSURE-TREATED) TO BE PAINTED. SEE SPECIFICATION SECTION 09 91 01.
  - SEE MECHANICAL DRAWINGS FOR DUCT/ PIPE PENETRATION LOCATIONS. SEE DETAIL 9/A700 FOR WALL OPENING REQUIREMENTS.



① LATRINE #427 - EAST  
1/2" = 1'-0"

② LATRINE #427 - NORTH  
1/2" = 1'-0"



③ LATRINE #427 - WEST  
1/2" = 1'-0"

④ LATRINE #427 - SOUTH  
1/2" = 1'-0"

New York State  
Parks, Recreation and  
Historic Preservation

Governor Kathy Hochul  
Commissioner Erik Kulesseid

IT IS A VIOLATION OF STATE EDUCATION LAW FOR ANY PERSON, UNLESS UNDER THE DIRECTION OF A LICENSED ARCHITECT/ENGINEER, TO ALTER THIS DOCUMENT IN ANYWAY. ALTERATIONS MUST HAVE THE SEAL AFFIXED ALONG WITH A DESCRIPTION OF THE ALTERATIONS, DATE AND ARCHITECT/ENGINEER'S SIGNATURE. COPYRIGHT © 2023

**Architect:**  
Saratoga Associates  
21 Congress Street, Suite 201  
Saratoga Springs, NY 12866

**SARATOGA ASSOCIATES**  
Landscape Architects, Architects,  
Engineers, and Planners, P.C.

**Surveyor/ Structural/ MEP Engineer:**  
LaBella Associates  
105 N. Tioga Street, Suite 200  
Ithaca, NY 14850

**LaBella**

Certificate of Authorization Number:  
Professional Engineering: 015281  
Land Surveying: 017973  
Geological: 018750

**Palisades Region**  
Palisades Interstate Park Commission  
Bear Mountain, New York 10911  
(845) 786-2701  
Executive Director: Joshua Laird

**Project Title:**  
CAMP JUNIOR ON LAKE TIORATI -  
PHASE 3

**Project Location:**  
HARRIMAN STATE PARK

**Key Plan**

REVISIONS		
Rev No	Description	Date

Drawn By:  
**KET, LLH**

Design By:  
**LLH**

Checked By:  
**CTS**

Approved By:  
**CTS**

Date:  
**3/16/23**

Seal and Signature

**Sheet Title:**  
ELEVATIONS -  
LATRINE #427

**Bid Documents**

Project Number:  
**21059.23**

Drawing Number:

**A210**