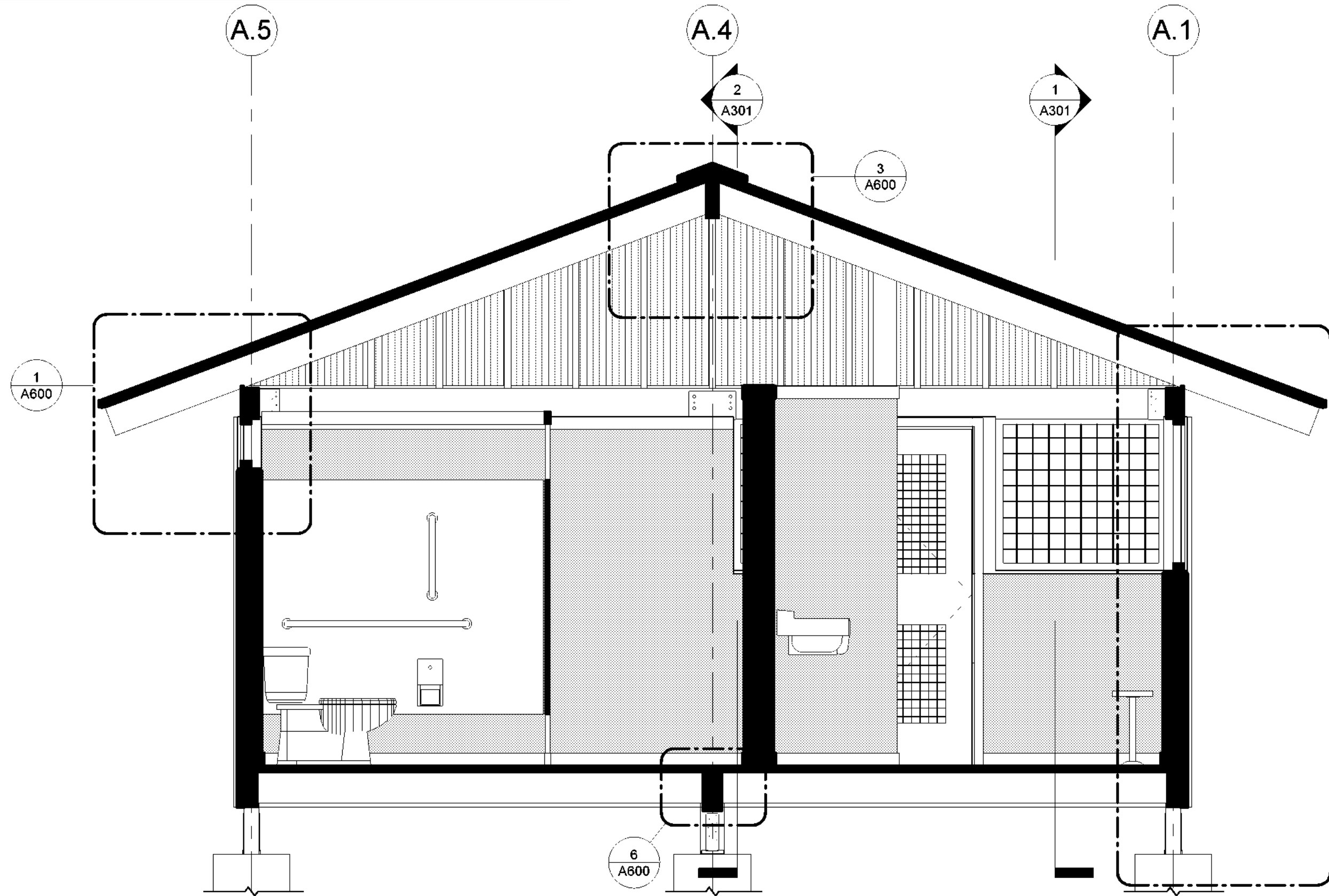
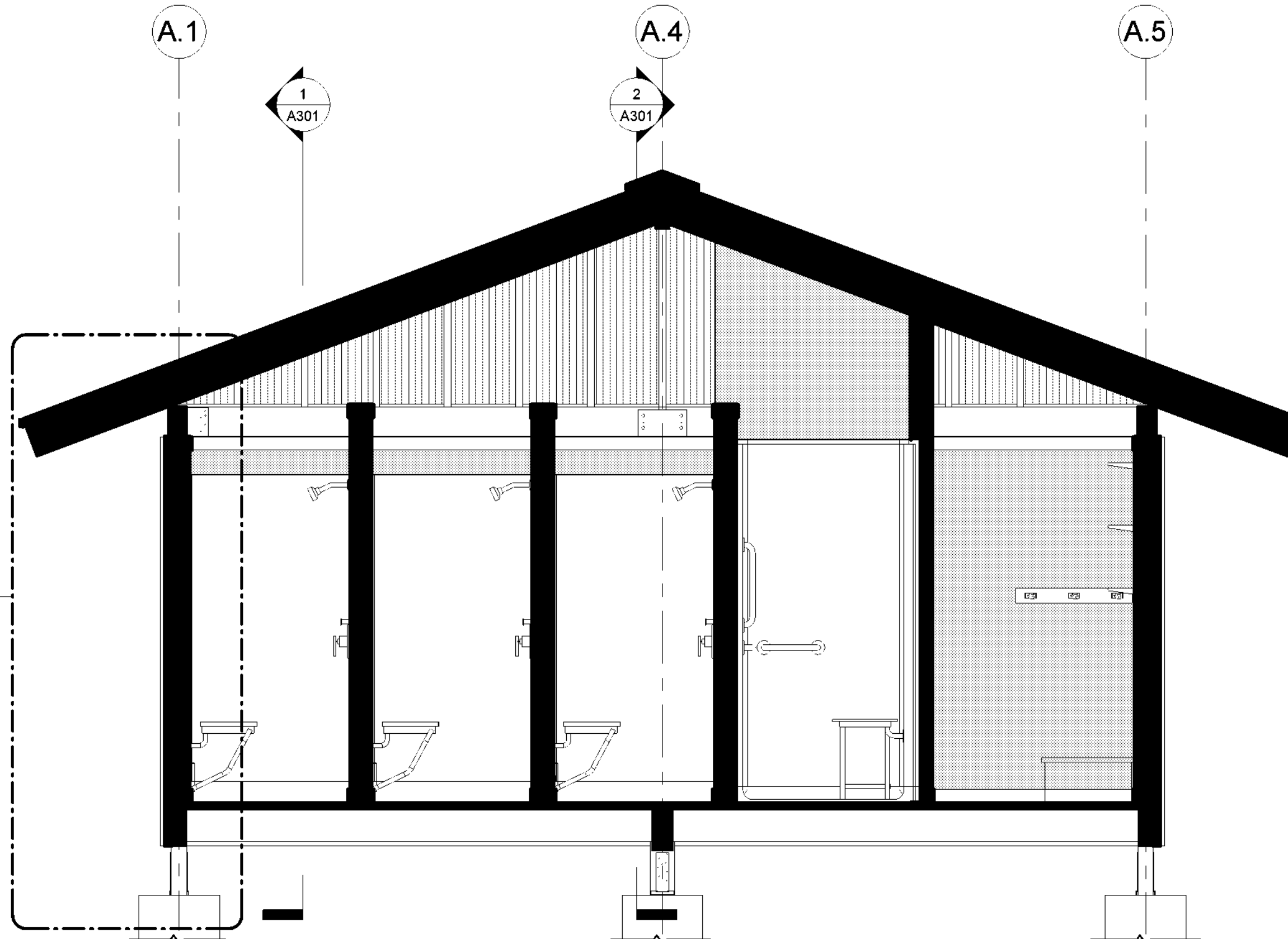


BATHHOUSE #231 & #322 GENERAL NOTES:

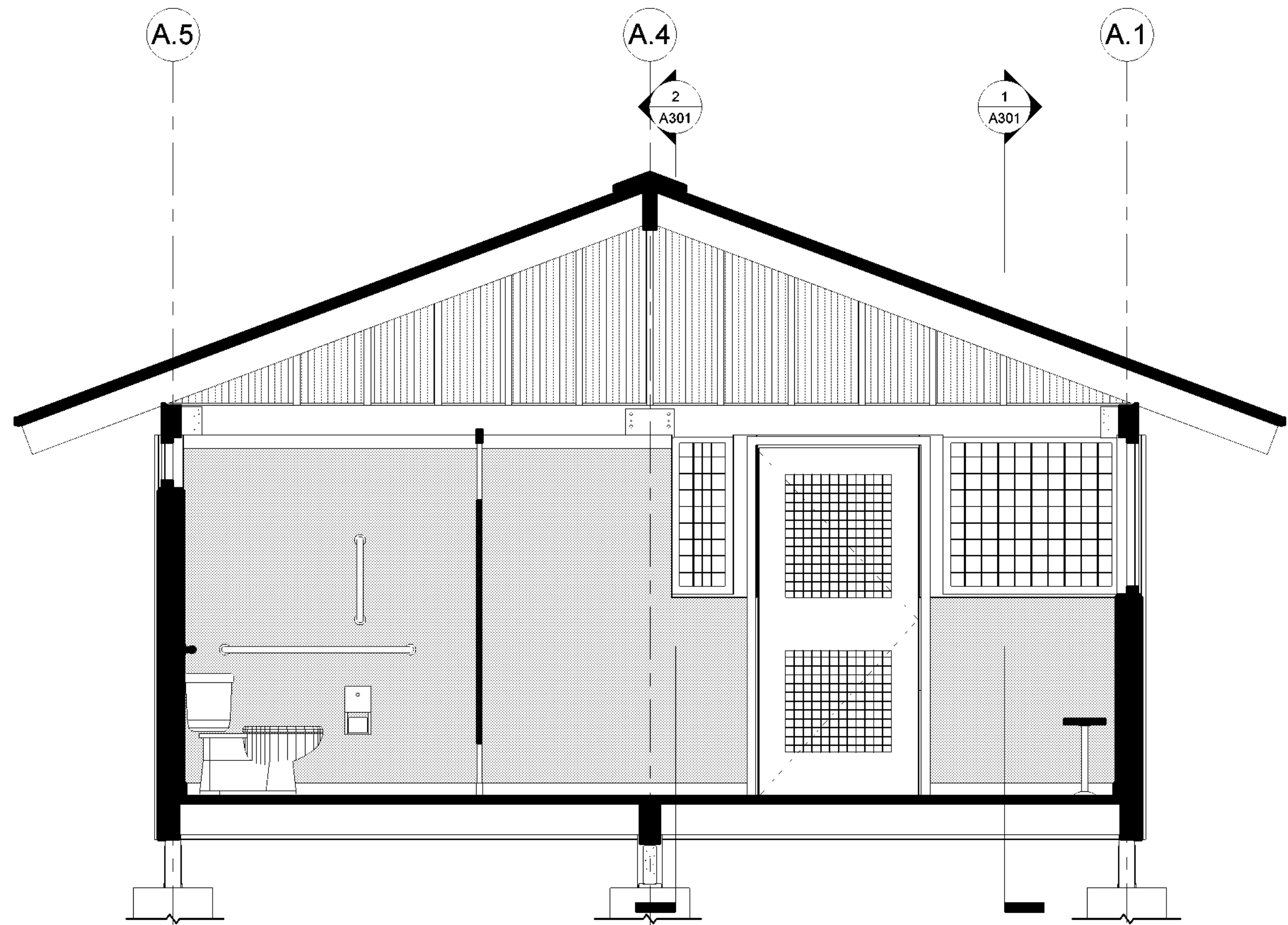
1. GRADE NOT SHOWN AS BATHHOUSE #231 & #322 HAVE DIFFERING SITE CONDITIONS. SEE LANDSCAPE DRAWINGS.
2. SEE DRAWING A601 FOR RAMP DETAILS AT BATHHOUSE #231. SEE DRAWING A602 FOR RAMP DETAIL AT BATHHOUSE #322. SIM.
3. ALL EXPOSED WOOD FRAMING, ROOF DECKING, SIDING, AND TRIM (NON PRESSURE-TREATED) TO BE PAINTED. SEE SPECIFICATION SECTION 09 01 01.
4. SEE MECHANICAL DRAWINGS FOR DUCT/ PIPE PENETRATION LOCATIONS. SEE DETAIL 9/A700 FOR WALL OPENING REQUIREMENTS.



1 BATHHOUSE #231 & #322 SECTION A
1/2" = 1'-0"



2 BATHHOUSE #231 & 322 SECTION B
1/2" = 1'-0"



3 BATHROOM #231 SECTION A1
1/2" = 1'-0"



New York State
Parks, Recreation and
Historic Preservation

Governor Kathy Hochul

Commissioner Erik Kulesseid

IT IS A VIOLATION OF STATE EDUCATION LAW FOR ANY PERSON, UNLESS UNDER THE DIRECTION OF A LICENSED ARCHITECT/ENGINEER TO ALTER THIS DOCUMENT IN ANYWAY. ALTERATIONS MUST HAVE THE SEAL AFFIXED ALONG WITH A DESCRIPTION OF THE ALTERATIONS, DATE AND ARCHITECTS/ENGINEERS SIGNATURE. COPYRIGHT © 2023

Architect:

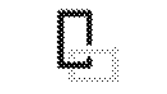
Saratoga Associates
21 Congress Street, Suite 201
Saratoga Springs, NY 12866

SARATOGA
ASSOCIATES

Landscape Architects, Architects,
Engineers, and Planners, P.C.

Surveyor/ Structural/ MEP
Engineer:

LaBella Associates
105 N. Tioga Street, Suite 200
Ithaca, NY 14850



LaBella

Certificate of Authorization Number:
Professional Engineering: 018281
Land Surveying: 017973
Geological: 018750

Palisades Region

Palisades Interstate Park Commission
Bear Mountain, New York 10911
(845) 786-2701
Executive Director: Joshua Laird

Project Title:
CAMP JUNIOR ON LAKE TIORATI -
PHASE 3

Project Location:
HARRIMAN STATE PARK

Key Plan

REVISIONS

Rev No	Description	Date

Drawn By:

KET, LLH

Design By:

LLH

Checked By:

CTS

Approved By:

CTS

Date:

3/16/23

Sheet Title:

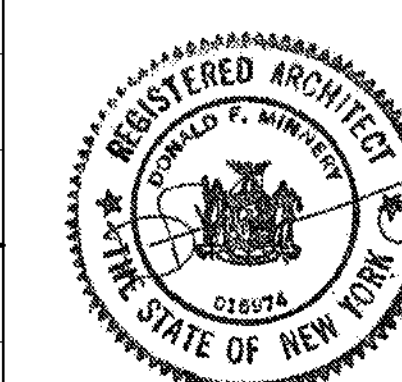
SECTIONS -
BATHHOUSE
#231 & #322

Bid Documents

Project Number:

21059.23

Seal and Signature



Drawing Number:

A300