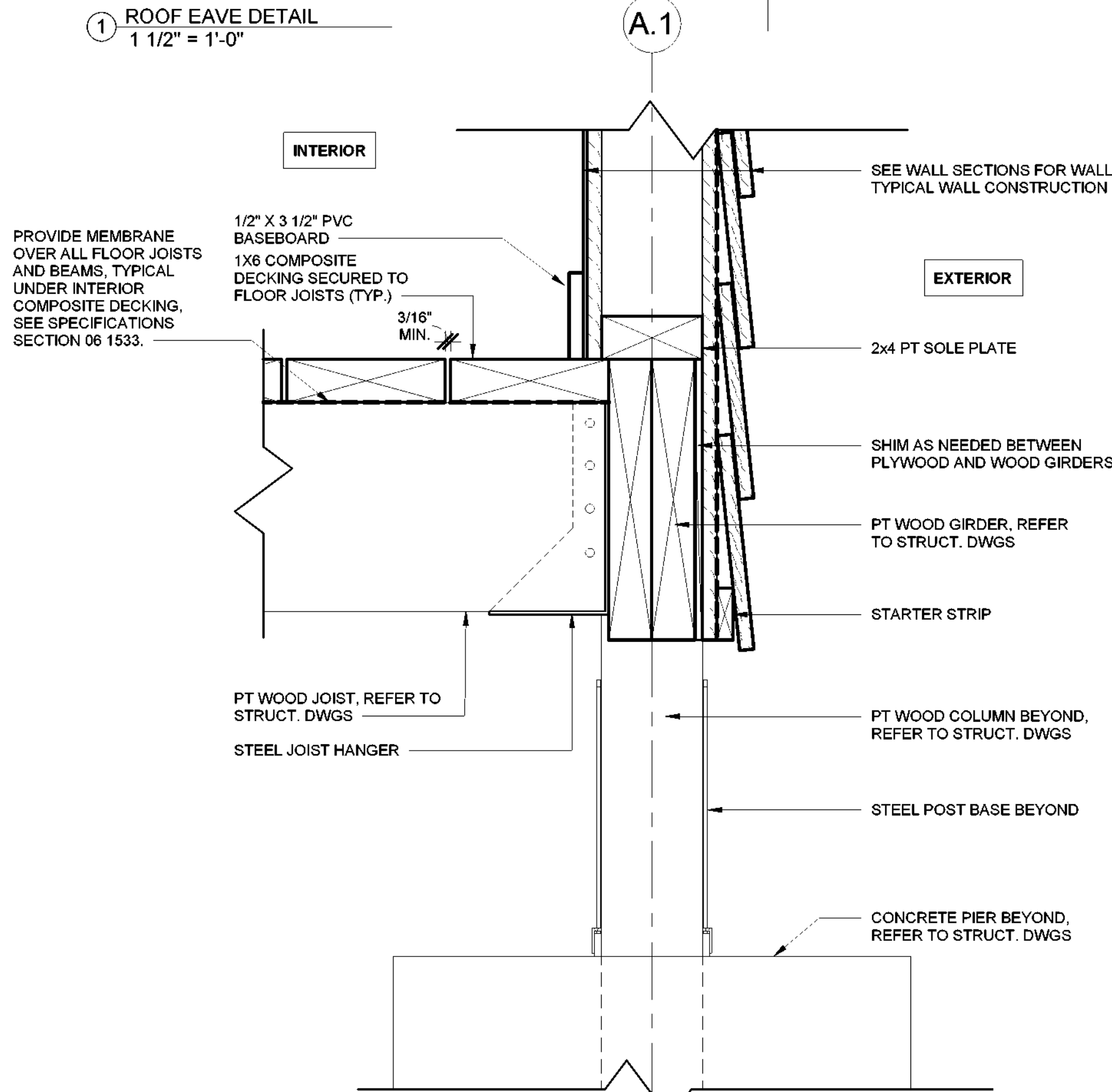
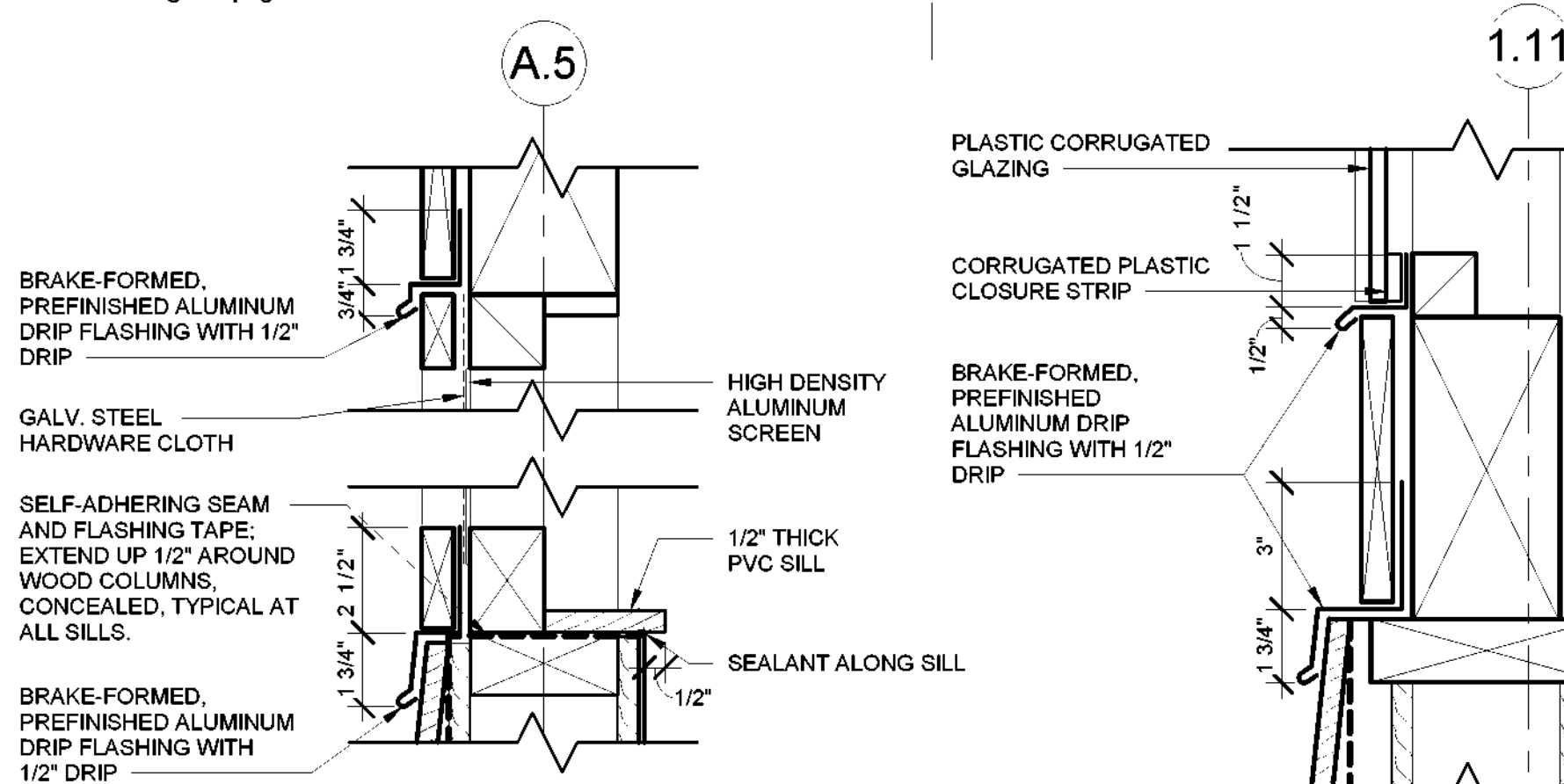


1 ROOF EAVE DETAIL
1 1/2" = 1'-0"

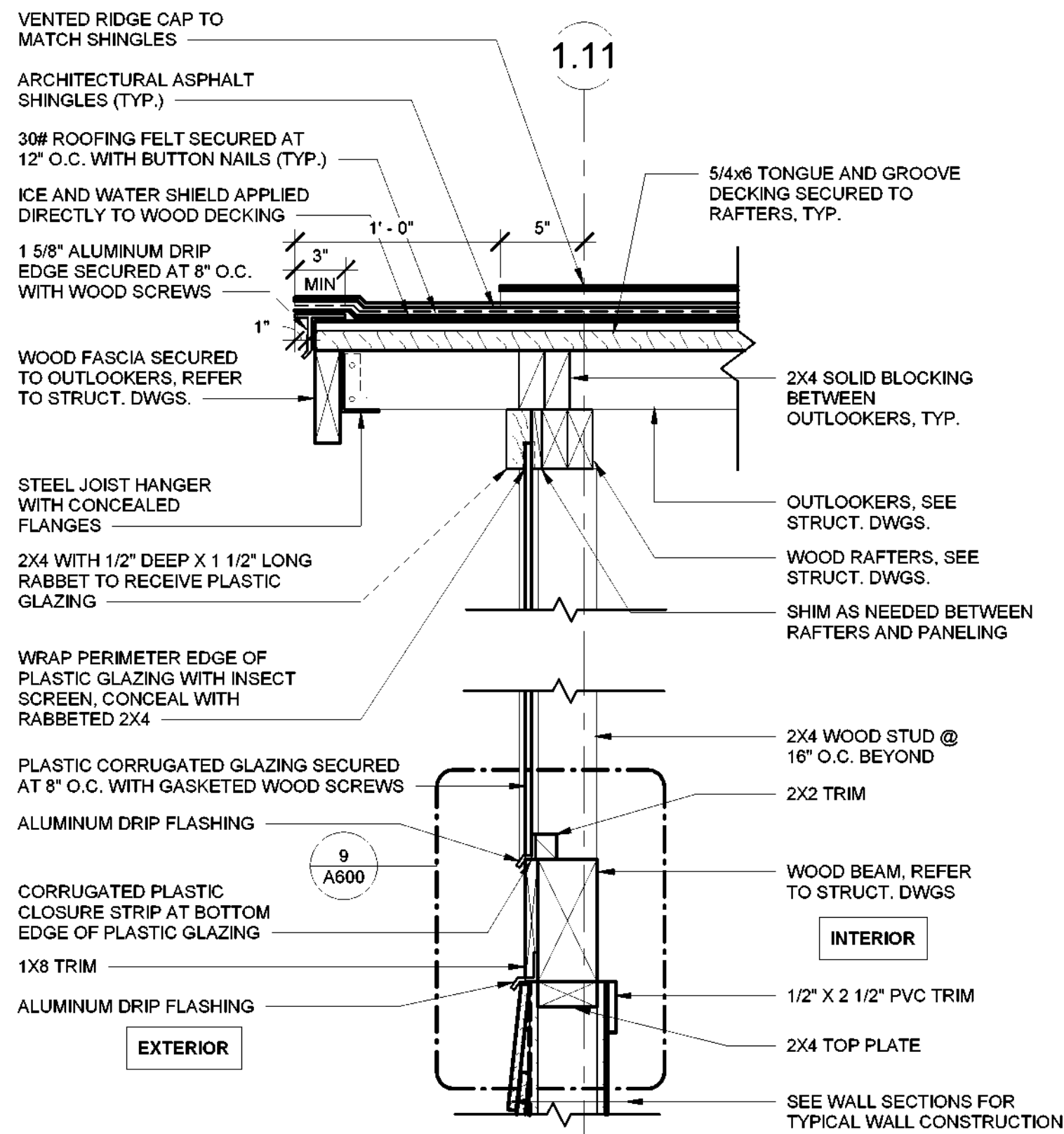


4 BASE DETAIL
3" = 1'-0"

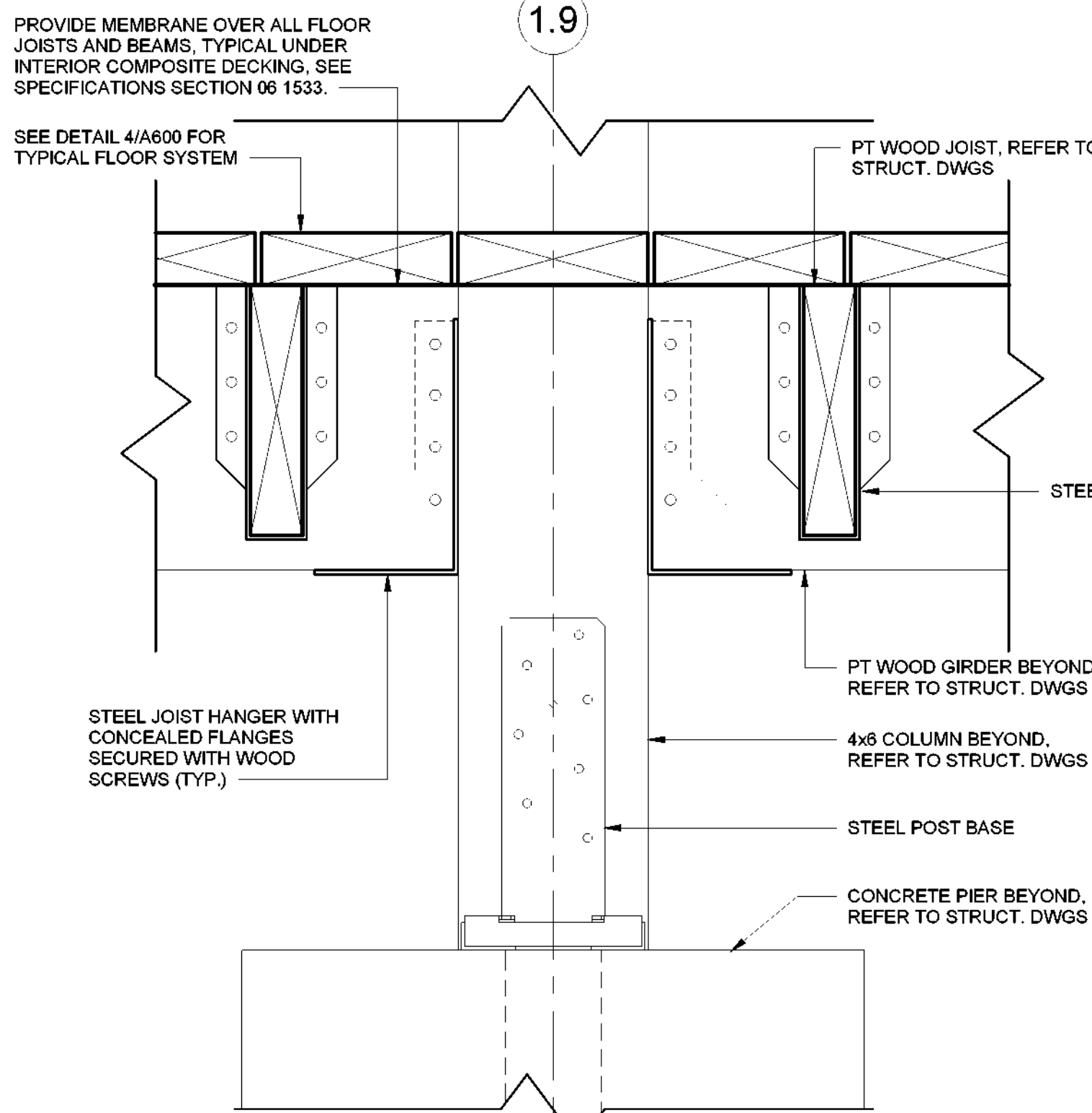


8 HEAD/SILL FLASHING DETAIL
3" = 1'-0"

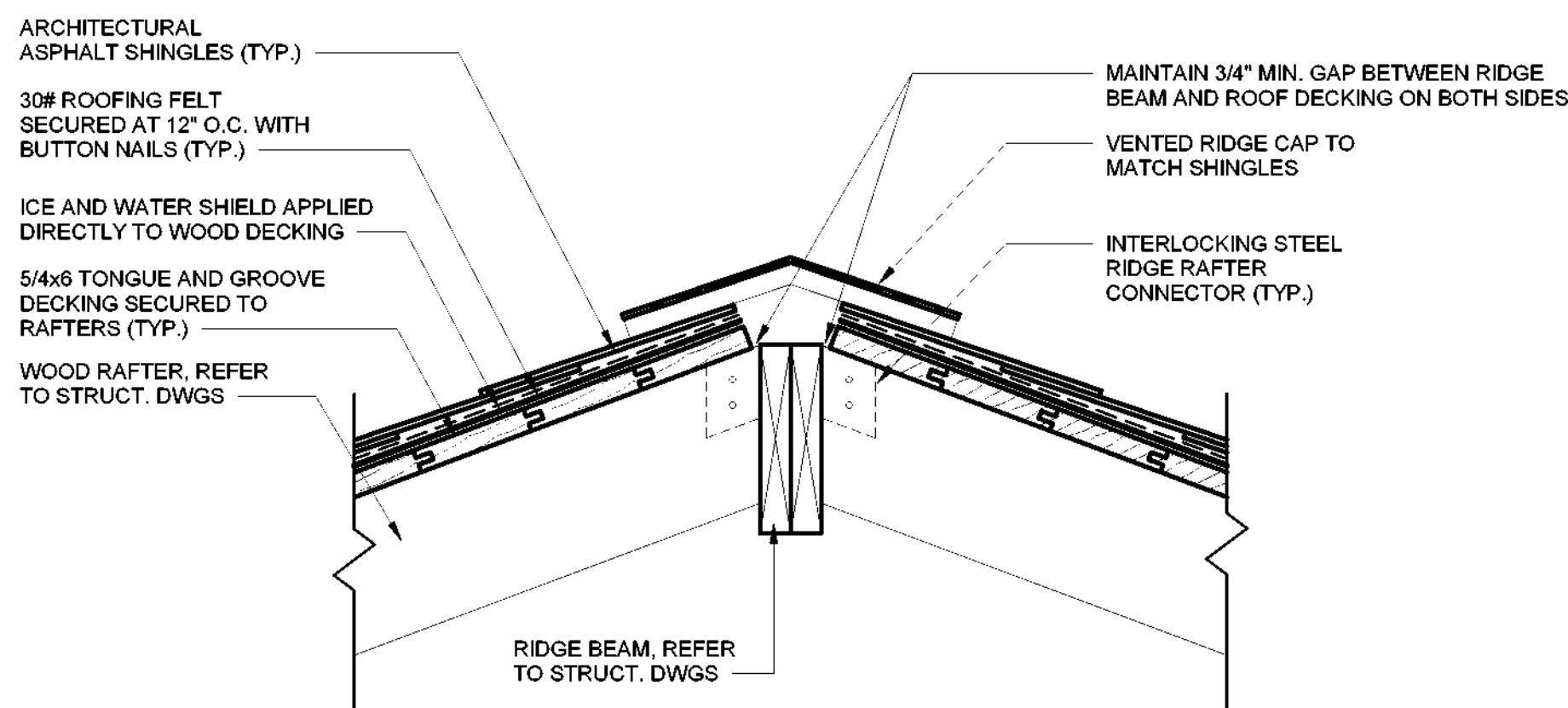
9 FLASHING DETAIL
3" = 1'-0"



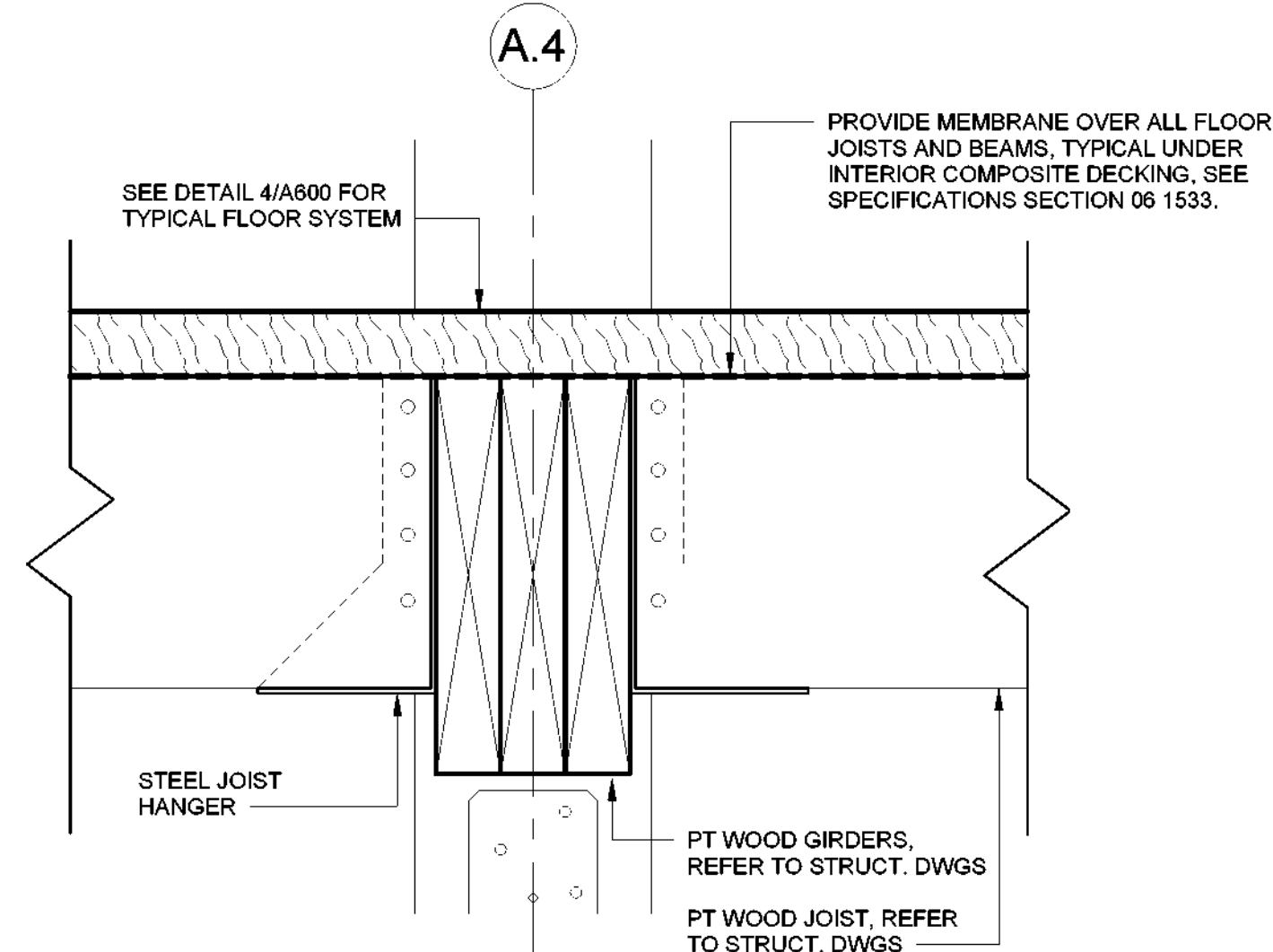
2 ROOF RAKE DETAIL
1 1/2" = 1'-0"



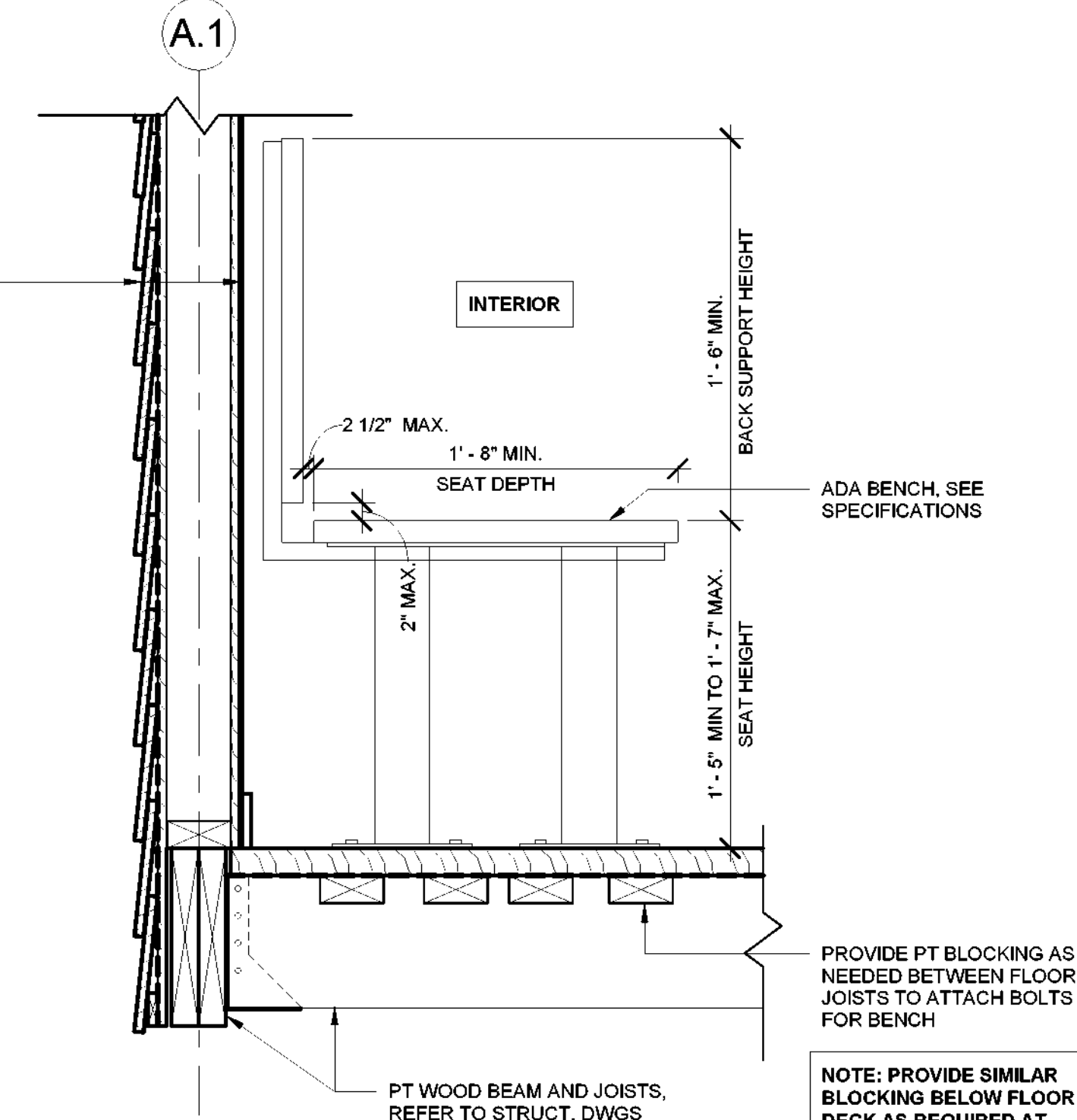
5 POST BASE DETAIL
3" = 1'-0"



3 ROOF RIDGE DETAIL
1 1/2" = 1'-0"



6 GIRDER & JOIST DETAIL
3" = 1'-0"



7 ADA BENCH DETAIL @ BATHHOUSE #231 & #322
1 1/2" = 1'-0"

GENERAL NOTES:

- ALL EXTERIOR SIDING AND TRIM SHALL BE SYNTHETIC (FIBER CEMENT), PRE-PRIMED AND FIELD-PAINTED, UNLESS OTHERWISE NOTED. SEE SPECIFICATIONS SECTIONS 07 46 49 AND 09 91 01.
- SCREEN 1X TRIM SHALL BE SIZED PER DRAWINGS, AND FROM S4S CEDAR, GRADE C AND BETTER CLEAR.
- SEE SPECIFICATIONS SECTION 07 62 00 FOR SHEET METAL FLASHING AT EXTERIOR WALLS.
- SEAL ALL EXPOSED WOOD AT INTERIOR WITH SPAR MARINE VARNISH. SEE SPECIFICATIONS SECTION 09 91 23.
- SEE MECHANICAL DRAWINGS FOR DUCT/PIPE PENETRATION LOCATIONS. SEE DETAIL 9/A700 FOR WALL OPENING REQUIREMENTS.
- COORDINATE FLOOR FRAMING WITH PLUMBING CONTRACTOR AND ADJUST FLOOR FRAMING AS REQUIRED FOR TOILET, SHOWER AND MOP SINK OUTLETS, PROVIDING HEADERS THE SAME SIZE AS FLOOR JOISTS WITH STEEL JOIST HANGERS AS REQUIRED. PROVIDE SOLID BLOCKING UNDER FLOOR DECK AND BETWEEN FLOOR JOISTS AT/ UNDER SUCH PLUMBING FIXTURES AS REQUIRED AND SIMILAR TO DETAIL 7/A600.

New York State
Parks, Recreation and
Historic Preservation
Governor Kathy Hochul
Commissioner Erik Kulesseid
Architect:
Saratoga Associates
21 Congress Street, Suite 201
Saratoga Springs, NY 12866
Surveyor/ Structural/ MEP
Engineer:
LaBella Associates
105 N. Tioga Street, Suite 200
Ithaca, NY 14850
Certificate of Authorization Number:
Professional Engineering: 015281
Land Surveying: 017973
Geological: 018750
SARATOGA
ASSOCIATES
Landscape Architects, Architects
Engineers, and Planners, P.C.
LaBella

Palisades Region
Palisades Interstate Park Commission
Bear Mountain, New York 10911
(845) 786-2701
Executive Director: Joshua Laird

Project Title:
CAMP JUNIOR ON LAKE TIORATI -
PHASE 3

Project Location:
HARRIMAN STATE PARK

Key Plan

REVISIONS

Rev No	Description	Date

Drawn By:
KET, LLH
Design By:
LLH
Checked By:
CTS
Approved By:
CTS
Date:
3/16/23
Sheet Title:
DETAILS -
BATHHOUSE
#231 & #322,
LATRINE #427
Bid Documents
Project Number:
21059.23
Seal and Signature

Drawing Number:
A600