

5/4/2023 4:37:51 PM

Room Finish Schedule - Bathhouse #231 & #322									
Number	Name	Wall Material	Wall Finish	Base Material	Base Finish	Floor Material	Floor Finish	Ceiling Material	Ceiling Finish
101	BOYS RESTROOM #231	FRP	N/A	PVC	N/A	CWD	N/A	WD	VRN
102	SHOWER 1	FRP	N/A	PVC	N/A	CWD	N/A	WD	VRN
103	SHOWER 2	FRP	N/A	PVC	N/A	CWD	N/A	WD	VRN
104	SHOWER 3	FRP	N/A	PVC	N/A	CWD	N/A	WD	VRN
105	ADA SHOWER	FRP	N/A	PVC	N/A	CWD	N/A	WD	VRN
106	MECHANICAL	FRP	N/A	PVC	N/A	CWD	N/A	WD	VRN
107	GIRLS RESTROOM #322	FRP	N/A	PVC	N/A	CWD	N/A	WD	VRN

GENERAL NOTES:

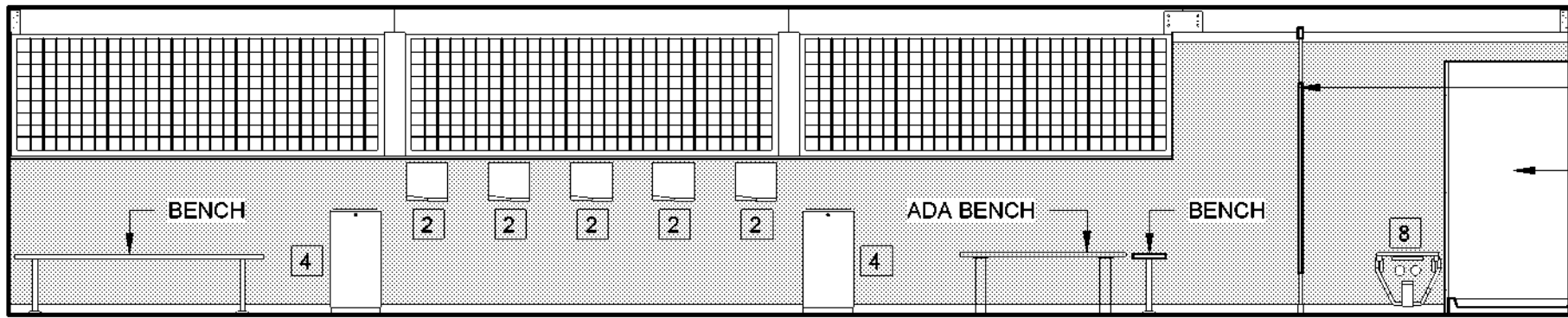
- ALL EXTERIOR SIDING AND TRIM SHALL BE SYNTHETIC (FIBER CEMENT), PRE-PRIMED AND FIELD-PAINTED, UNLESS OTHERWISE NOTED. SEE SPECIFICATIONS SECTIONS 07 46 49 AND 09 91 01.
- SCREEN 1 X TRIM SHALL BE SIZED PER DRAWINGS, AND FROM S4S CEDAR, GRADE C AND BETTER CLEAR.
- SEE SPECIFICATIONS SECTION 07 62 00 FOR SHEET METAL FLASHING AT EXTERIOR WALLS.
- SEAL ALL EXPOSED WOOD AT INTERIOR WITH SPAR MARINE VARNISH. SEE SPECIFICATIONS SECTION 09 91 23.
- SEE MECHANICAL DRAWINGS FOR DUCT/ PIPE PENETRATION LOCATIONS. SEE DETAIL 9/A700 FOR WALL OPENING REQUIREMENTS.
- COORDINATE FLOOR FRAMING WITH PLUMBING CONTRACTOR AND ADJUST FLOOR FRAMING AS REQUIRED FOR TOILET, SHOWER AND MOP SINK OUTLETS. PROVIDING HEADERS THE SAME SIZE AS FLOOR JOISTS WITH STEEL JOIST HANGERS AS REQUIRED. PROVIDE SOLID BLOCKING UNDER FLOOR DECK AND BETWEEN FLOOR JOISTS AT/ UNDER SUCH PLUMBING FIXTURES AS REQUIRED AND SIMILAR TO DETAIL 7/A800.

FINISH MATERIAL LEGEND

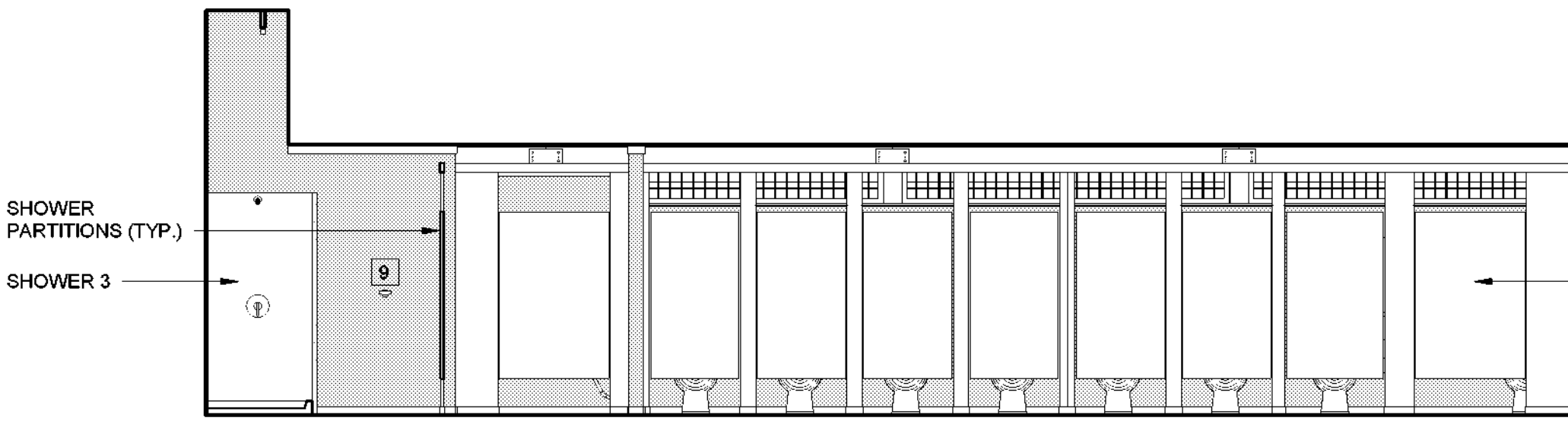
- CORRUGATED FIBERGLASS PANELING
- COMPOSITE WOOD AND FIBER REINFORCED PANEL (FRP)

FINISH LEGEND

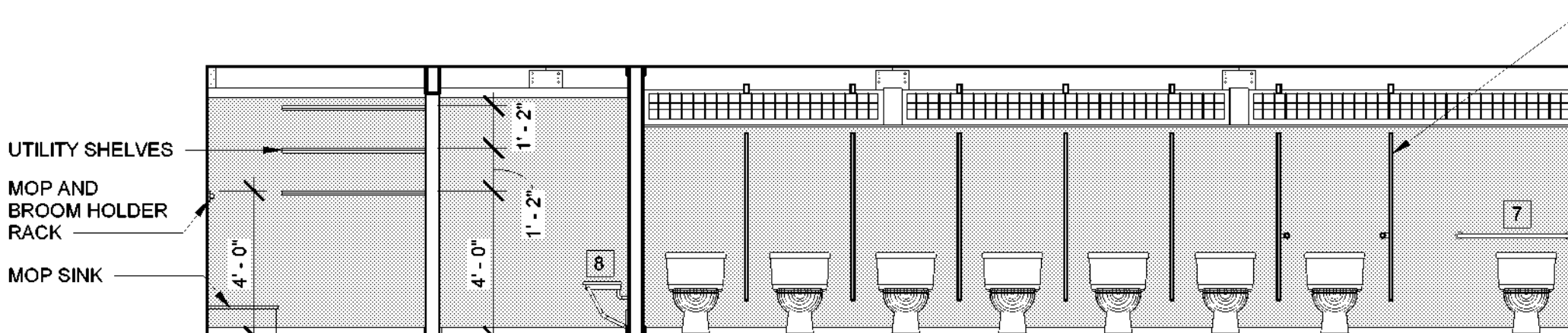
- CWD COMPOSITE WOOD DECKING
- FG FIBERGLASS
- FRP FIBER REINFORCED PANEL
- N/A NOT APPLICABLE
- PT PAINT
- PVC POLYVINYL CHLORIDE
- VRN VARNISH
- WD WOOD



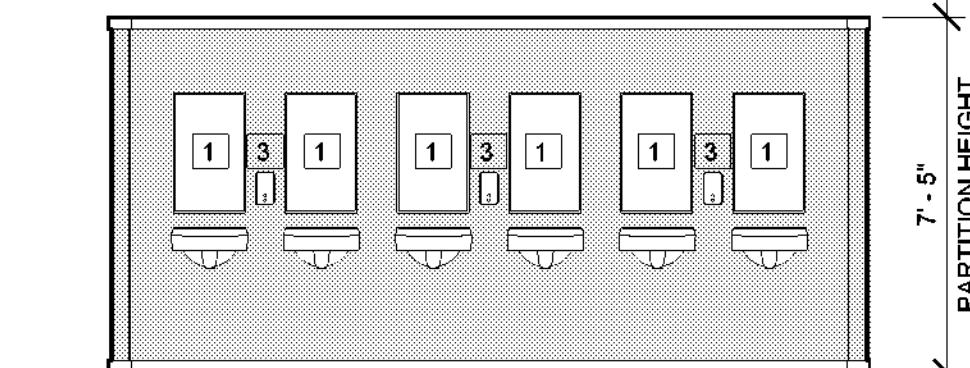
1 BATHHOUSE #231 & #322 - NORTH INT. ELEVATION  
1/4" = 1'-0"



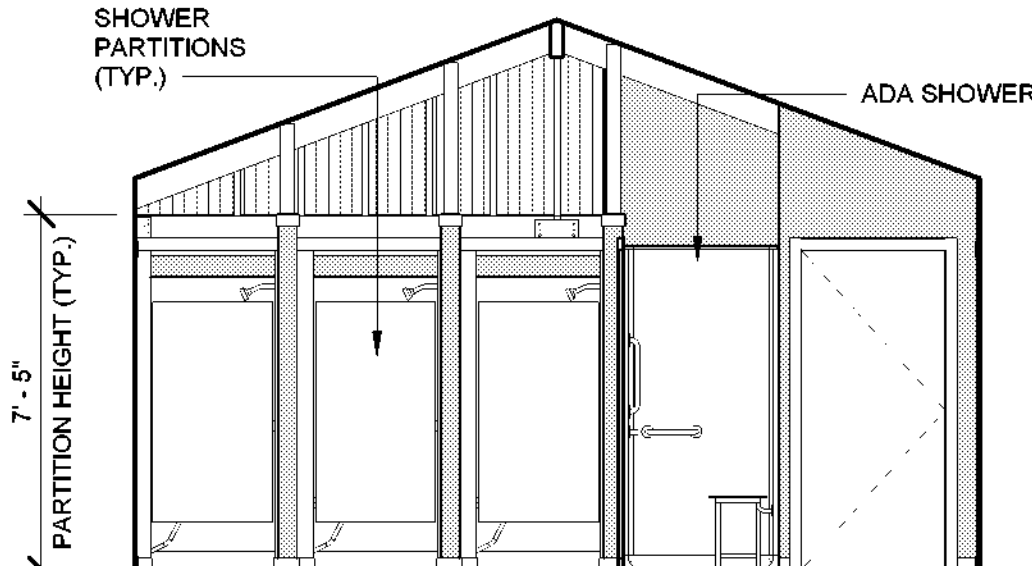
2 BATHHOUSE #231 & #322 - SOUTH INT. ELEVATION A  
1/4" = 1'-0"



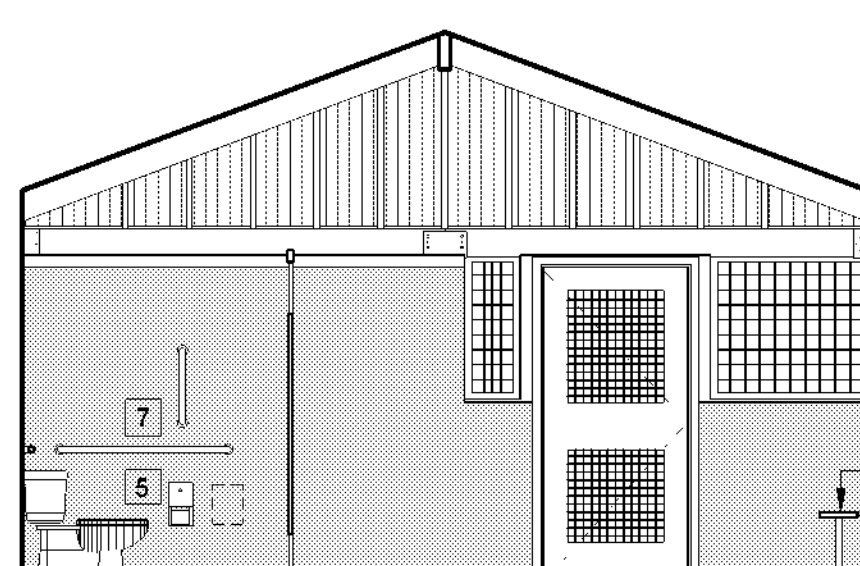
4 BATHHOUSE #231 & #322 SOUTH INT. ELEVATION B  
1/4" = 1'-0"



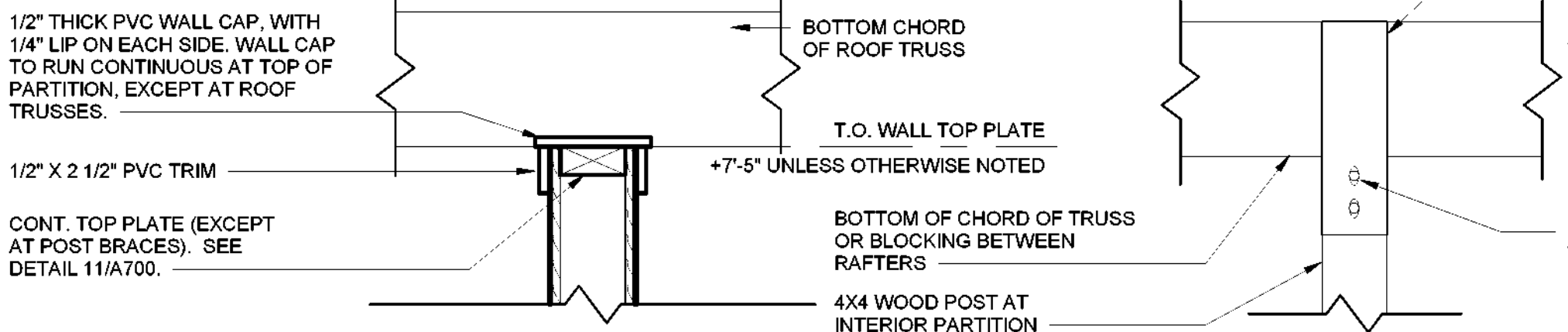
5 BATHHOUSE #231 & #322 - SOUTH INT. ELEVATION C  
1/4" = 1'-0"



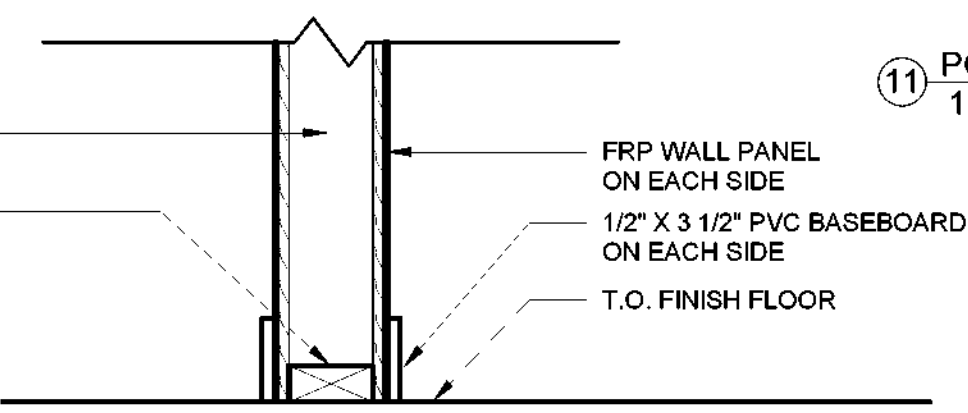
6 BATHHOUSE #231 & #322 - EAST INT. ELEVATION  
1/4" = 1'-0"



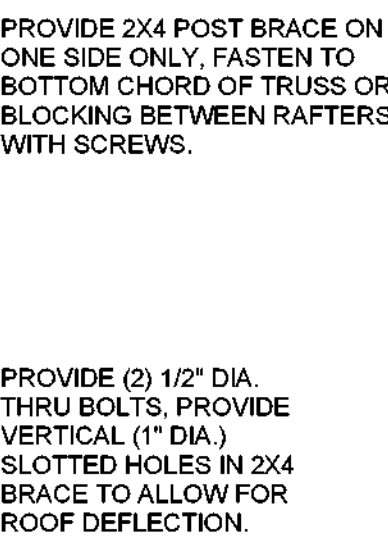
7 BATHHOUSE #231 & #322 - WEST INT. ELEVATION  
1/4" = 1'-0"



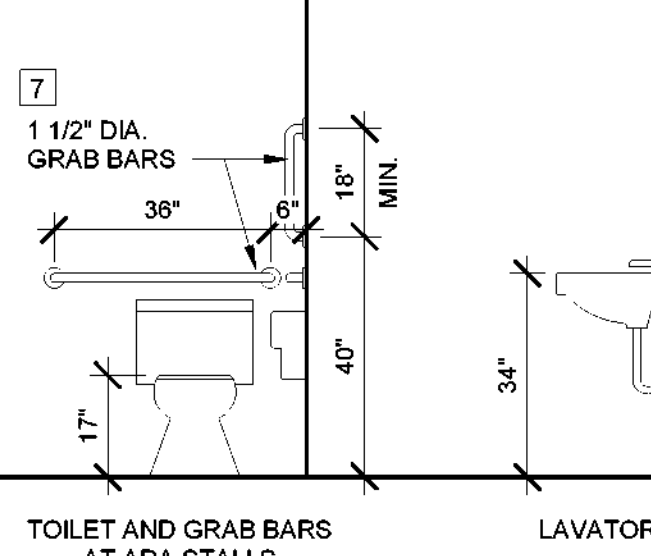
8 WALL TYPES  
1 1/2" = 1'-0"



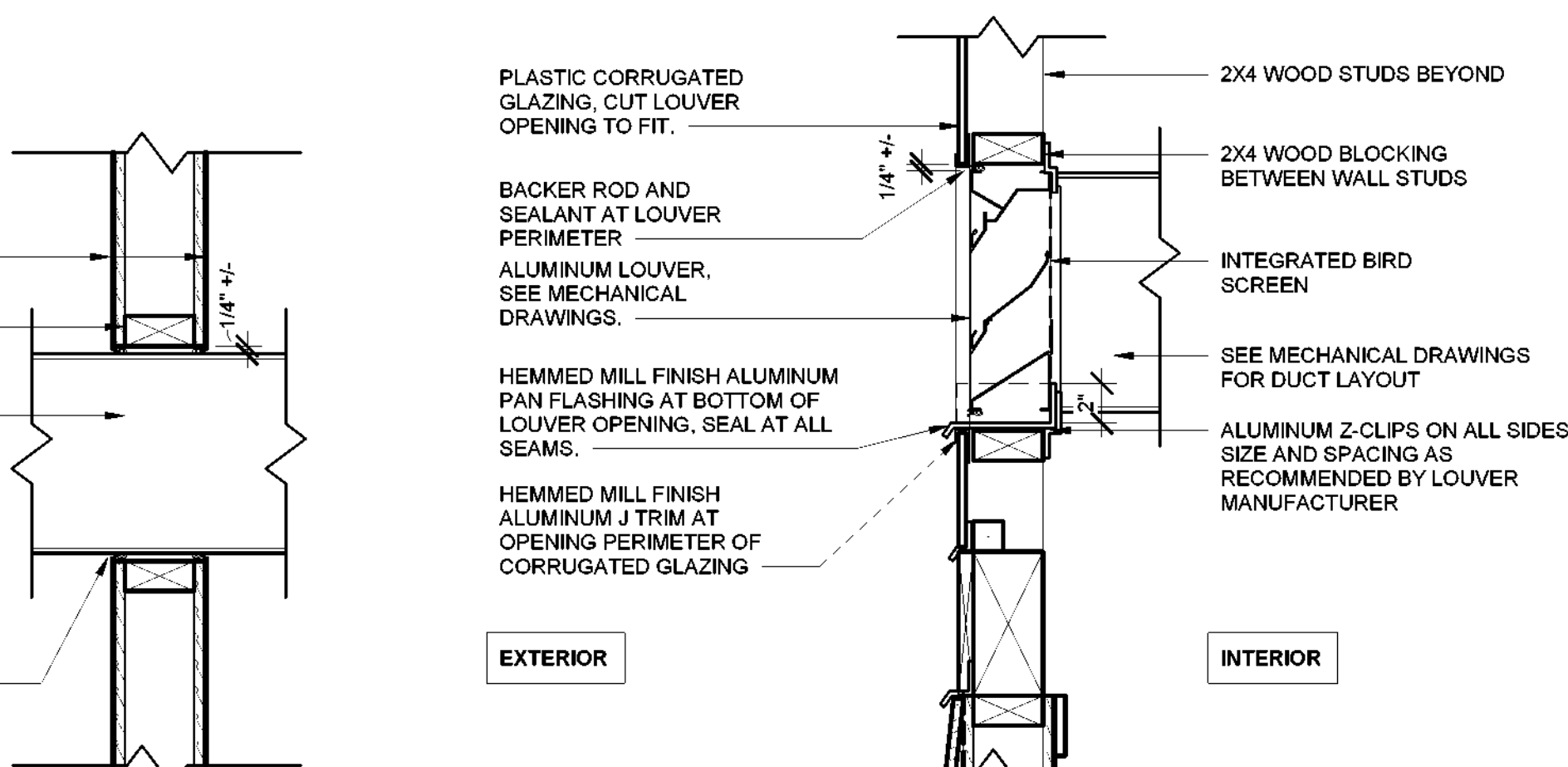
11 POST TO ROOF TRUSS DTL @ INTERIOR PARTITIONS  
1 1/2" = 1'-0"



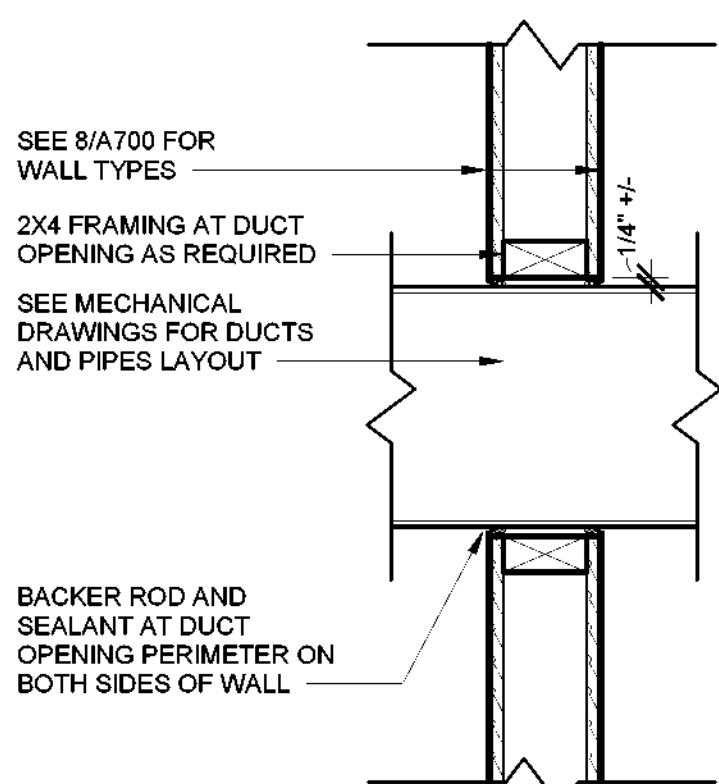
7 TOILET AND GRAB BARS AT ADA AND AMBULATORY STALLS  
3/8" = 1'-0"



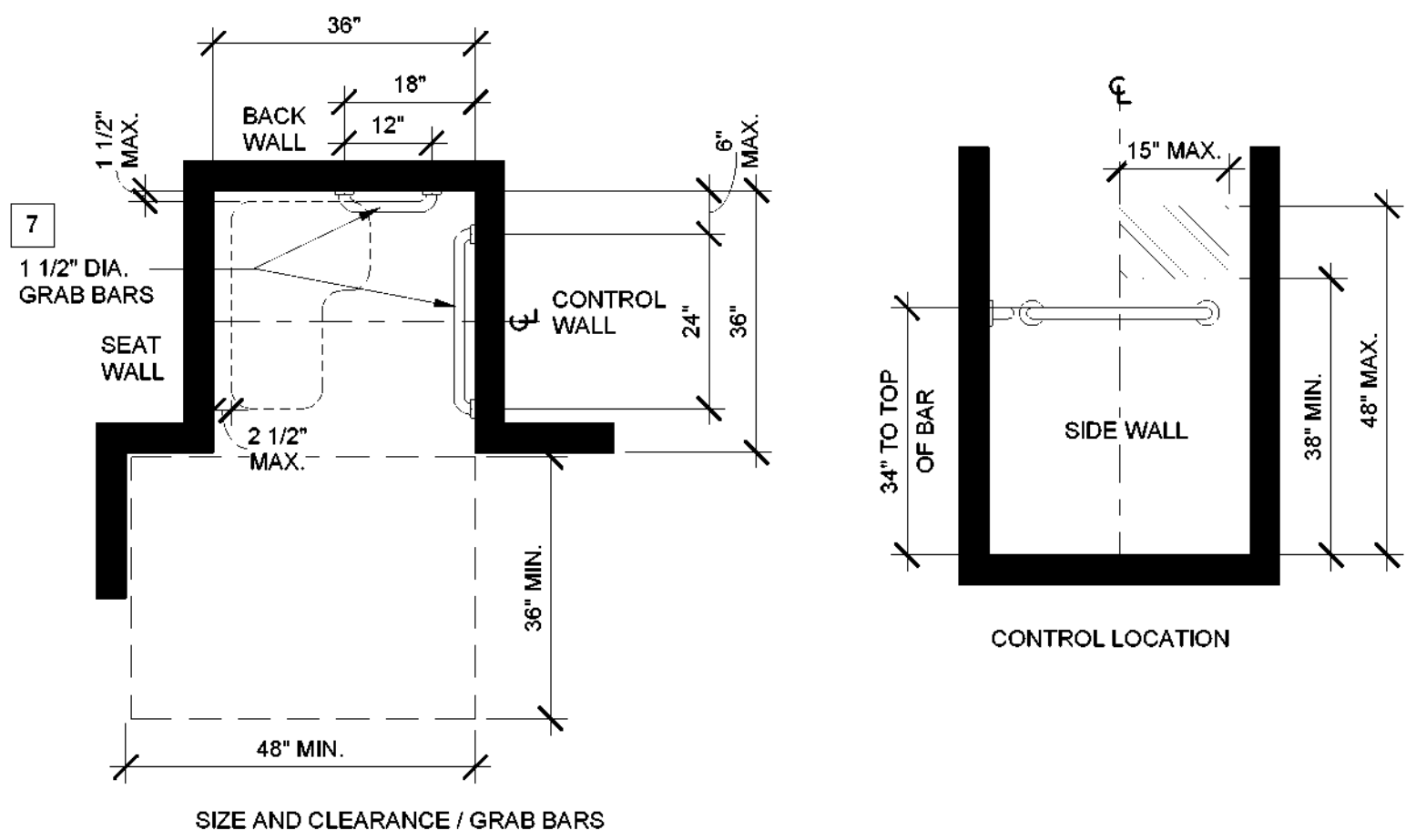
7 TOILET AND GRAB BARS AT ADA STALLS  
3/8" = 1'-0"



10 LOUVER SECTION DETAIL  
1 1/2" = 1'-0"



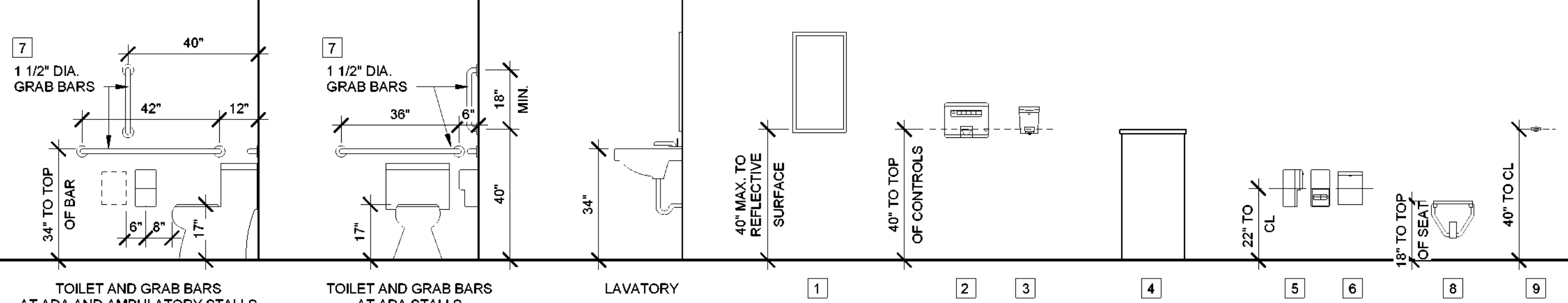
9 DUCT/ PIPE PENETRATION DETAIL  
1 1/2" = 1'-0"



7 Transfer Type Showers  
1/2" = 1'-0"

ACCESSORIES LEGEND

- 1 MIRROR
- 2 PAPER TOWEL DISPENSER, FURNISHED BY CAMPGROUND, INSTALLED BY G.C.
- 3 SOAP DISPENSER, FURNISHED BY CAMPGROUND, INSTALLED BY G.C.
- 4 TRASH CAN, PROVIDED BY OWNER
- 5 TOILET PAPER DISPENSER
- 6 SURFACE MOUNTED SANITARY NAPKIN DISPOSAL
- 7 GRAB BAR (REF. DIMS IN ELEVATION)
- 8 FOLD-DOWN SHOWER SEAT
- 9 ROBE HOOK



7 Mounting Fixtures and Accessories  
3/8" = 1'-0"

Rev No	Description	Date

Drawn By: KET, LLH	Seal and Signature
Design By: LLH	
Checked By: CTS	
Approved By: CTS	
Date: 3/16/23	

Sheet Title: BATHHOUSE #231 & #322 INTERIOR ELEVATIONS & FINISH SCHEDULES DIA Documents	Drawing Number: A700
Project Number: 21059.23	