



Room Finish Schedule - Latrine #427									
Number	Name	Wall Material	Wall Finish	Base Material	Base Finish	Floor Material	Floor Finish	Ceiling Material	Ceiling Finish
109	GIRLS RESTROOM #427	FRP	N/A	PVC	N/A	CWD	N/A	WD	VRN
110	BOYS RESTROOM #427	FRP	N/A	PVC	N/A	CWD	N/A	WD	VRN

GENERAL NOTES:

- ALL EXTERIOR SIDING AND TRIM SHALL BE SYNTHETIC (FIBER CEMENT), PRE-PRIMED AND FIELD-PAINTED, UNLESS OTHERWISE NOTED. SEE SPECIFICATIONS SECTIONS 07 46 49 AND 09 91 01.
- SCREEN 1X TRIM SHALL BE SIZED PER DRAWINGS, AND FROM S4S CEDAR, GRADE C AND BETTER CLEAR.
- SEE SPECIFICATIONS SECTION 07 82 00 FOR SHEET METAL FLASHING AT EXTERIOR WALLS.
- SEAL ALL EXPOSED WOOD AT INTERIOR WITH SPAR MARINE VARNISH. SEE SPECIFICATIONS SECTION 09 91 23.
- SEE MECHANICAL DRAWINGS FOR DUCT/ PIPE PENETRATION LOCATIONS. SEE DETAIL 9/A700 FOR WALL OPENING REQUIREMENTS.
- COORDINATE FLOOR FRAMING WITH PLUMBING CONTRACTOR AND ADJUST FLOOR FRAMING AS REQUIRED FOR TOILET, SHOWER AND MOP SINK OUTLETS, PROVIDING HEADERS THE SAME SIZE AS FLOOR JOISTS WITH STEEL JOIST HANGERS AS REQUIRED. PROVIDE SOLID BLOCKING UNDER FLOOR DECK AND BETWEEN FLOOR JOISTS AT/ UNDER SUCH PLUMBING FIXTURES AS REQUIRED AND SIMILAR TO DETAIL 7/A600.

FINISH MATERIAL LEGEND

-  CORRUGATED FIBERGLASS PANELING
-  COMPOSITE WOOD AND FIBER REINFORCED PANEL (FRP)

FINISH LEGEND

- CWD COMPOSITE WOOD DECKING
FG FIBERGLASS
FRP FIBER REINFORCED PANEL
N/A NOT APPLICABLE
PT PAINT
PVC POLYVINYL CHLORIDE
VRN VARNISH
WD WOOD



New York State
Parks, Recreation and
Historic Preservation

Governor Kathy Hochul

Commissioner Erik Kulesseid

IT IS A VIOLATION OF STATE EDUCATION LAW FOR ANY PERSON, UNLESS UNDER THE DIRECTION OF A LICENSED ARCHITECT/ENGINEER, TO ALTER THIS DOCUMENT IN ANYWAY. ALTERATIONS MUST HAVE THE SEAL AFFIXED ALONG WITH A DESCRIPTION OF THE ALTERATIONS, DATE AND ARCHITECTS/ENGINEERS' SIGNATURE. COPYRIGHT © 2023

Architect:

Saratoga Associates
21 Congress Street, Suite 201
Saratoga Springs, NY 12866

SARATOGA
ASSOCIATES

Landscape Architects, Architects
Engineers, and Planners, P.C.

Surveyor/ Structural/ MEP Engineer:

LaBella Associates
105 N. Tioga Street, Suite 200
Ithaca, NY 14850



LaBella

Certificate of Authorization Number:
Professional Engineering: 018281
Land Surveying: 017973
Geological: 018750

Palisades Region

Palisades Interstate Park Commission
Bear Mountain, New York 10911
(845) 786-2701
Executive Director: Joshua Laird

Project Title:

CAMP JUNIOR ON LAKE TIORATI -
PHASE 3

Project Location:

HARRIMAN STATE PARK

Key Plan

REVISIONS

Rev No	Description	Date

Drawn By:

KET, LLH

Design By:

LLH

Checked By:

CTS

Approved By:

CTS

Date:

3/16/23

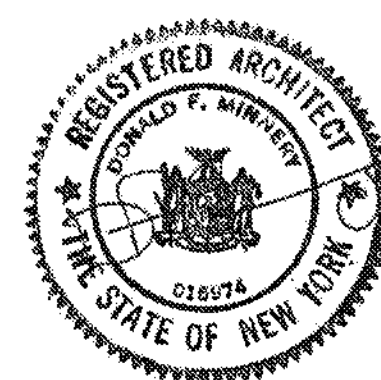
Sheet Title:

LATRINE #427
INTERIOR
ELEVATIONS

Bid Documents

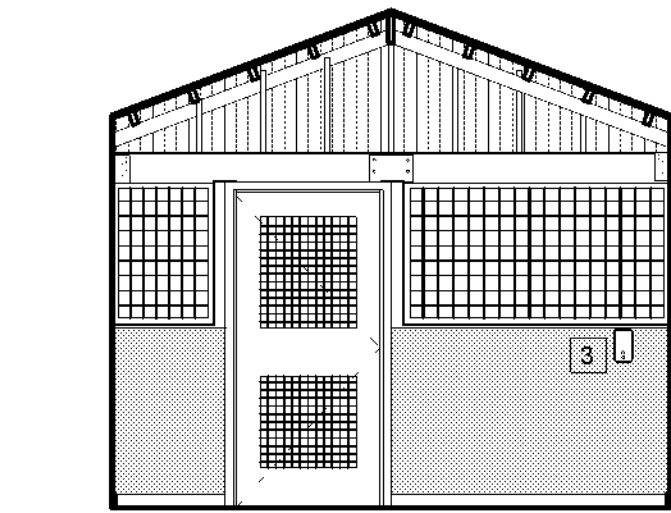
Project Number:
21059.23

Seal and Signature

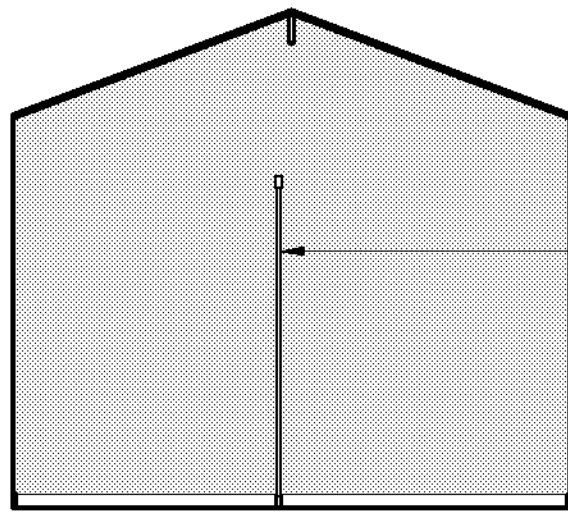


Drawing Number:

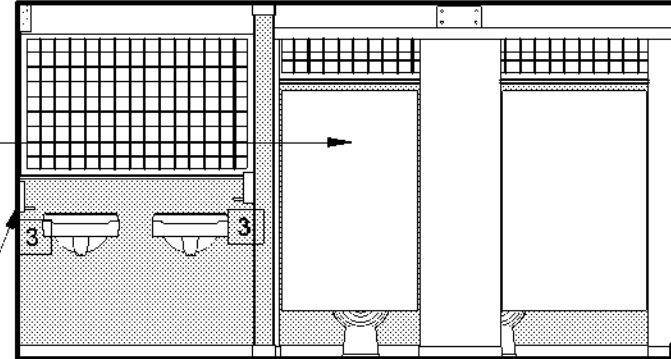
A701



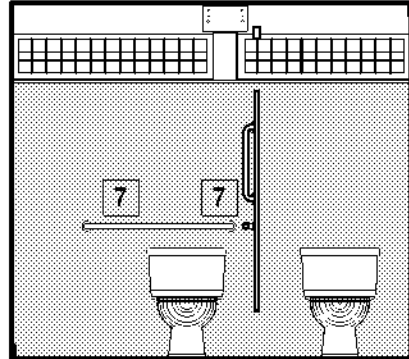
1 LATRINE #427 - NORTH INT. ELEVATION A
1/4" = 1'-0"



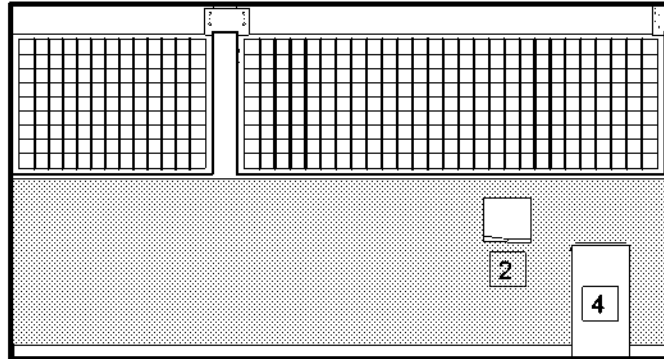
2 LATRINE #427 - SOUTH INT. ELEVATION A
1/4" = 1'-0"



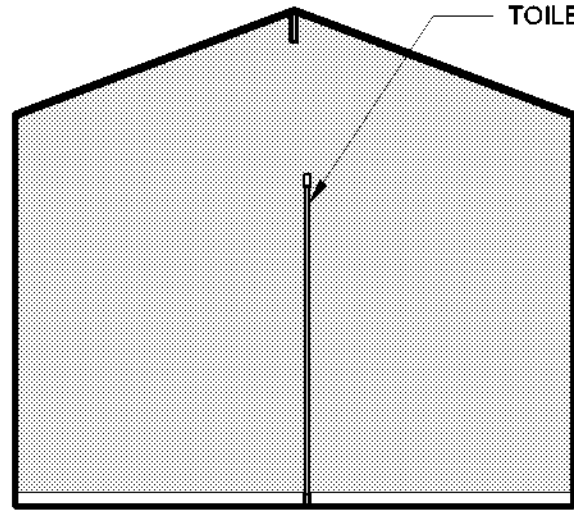
3 LATRINE #427 - EAST INT. ELEVATION A
1/4" = 1'-0"



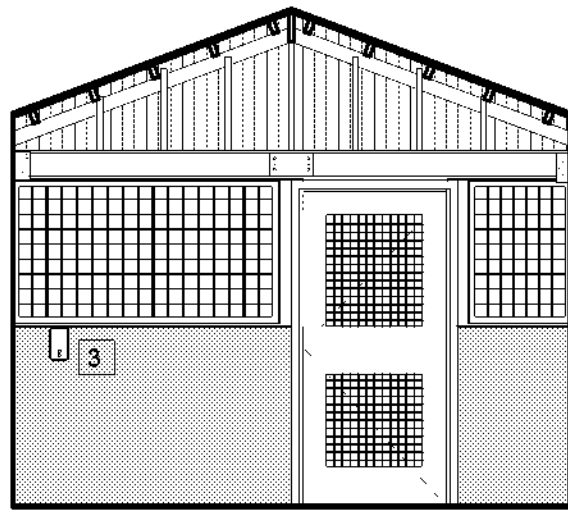
4 LATRINE #427 - EAST INT. ELEVATION A-B
1/4" = 1'-0"



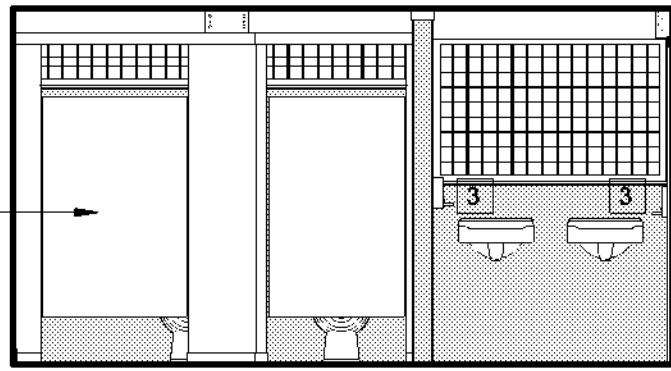
5 LATRINE #427 - WEST INT. ELEVATION A
1/4" = 1'-0"



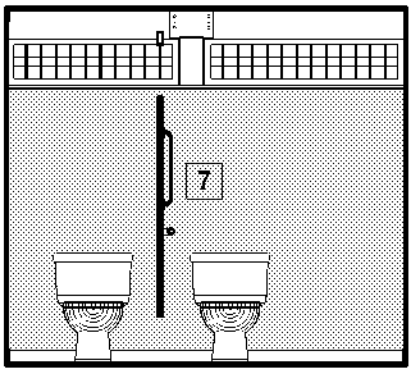
6 LATRINE #427 - NORTH INT. ELEVATION B
1/4" = 1'-0"



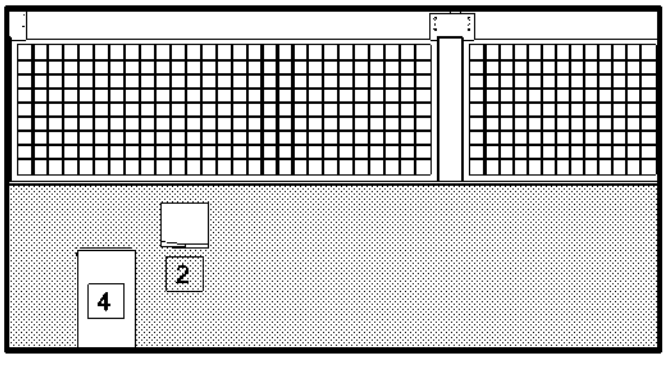
7 LATRINE #427 - SOUTH INT. ELEVATION B
1/4" = 1'-0"



8 LATRINE #427 - EAST INT. ELEVATION B
1/4" = 1'-0"



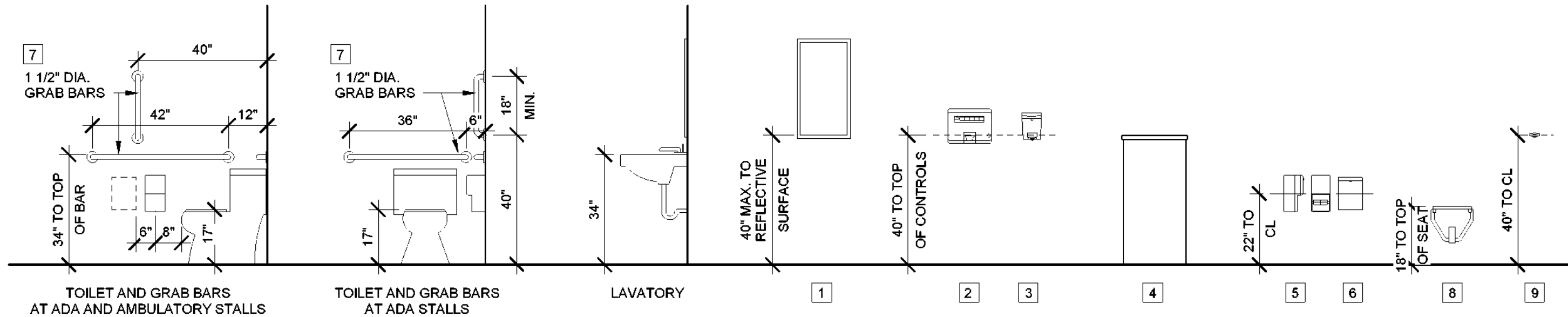
9 LATRINE #427 - EAST INT. ELEVATION B-B
1/4" = 1'-0"



10 LATRINE #427 - WEST INT. ELEVATION B
1/4" = 1'-0"

ACCESSORIES LEGEND

- 1 MIRROR
- 2 PAPER TOWEL DISPENSER, FURNISHED BY CAMPGROUND, INSTALLED BY G.C.
- 3 SOAP DISPENSER, FURNISHED BY CAMPGROUND, INSTALLED BY G.C.
- 4 TRASH CAN, PROVIDED BY OWNER
- 5 TOILET PAPER DISPENSER
- 6 SURFACE MOUNTED SANITARY NAPKIN DISPOSAL
- 7 GRAB BAR (REF. DIMS IN ELEVATION)
- 8 FOLD-DOWN SHOWER SEAT
- 9 ROBE HOOK



Mounting Fixtures and Accessories
3/8" = 1'-0"