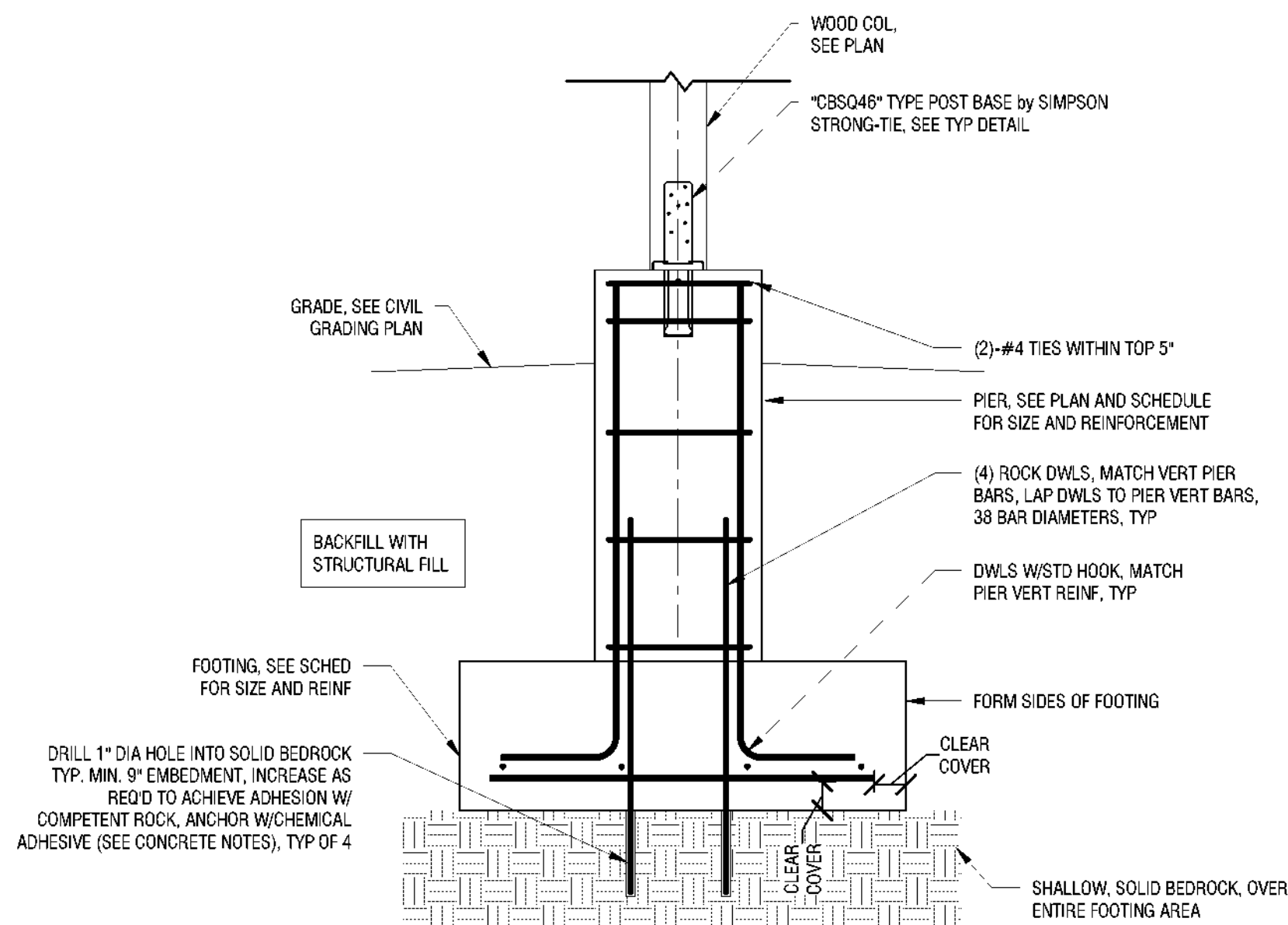
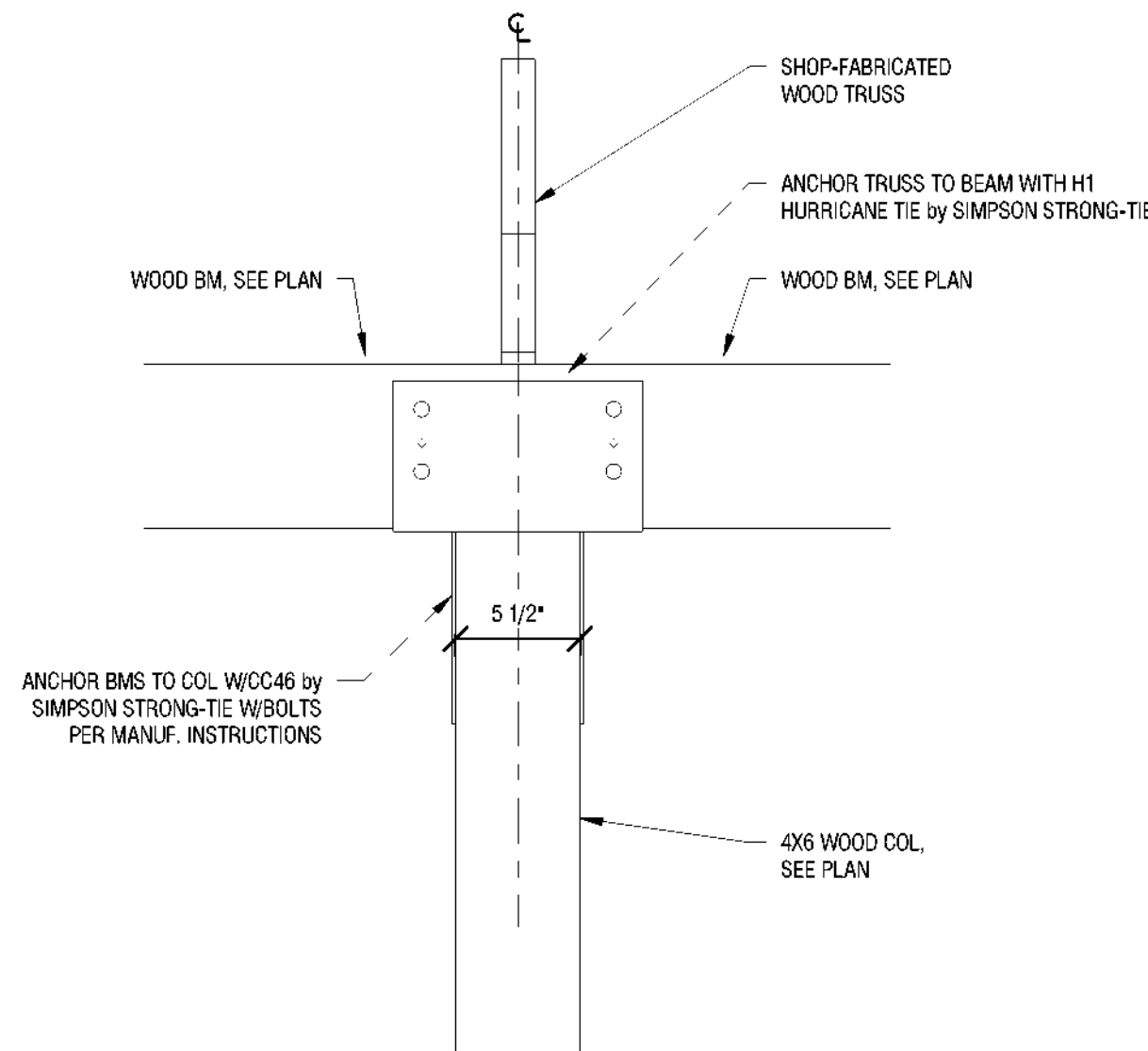


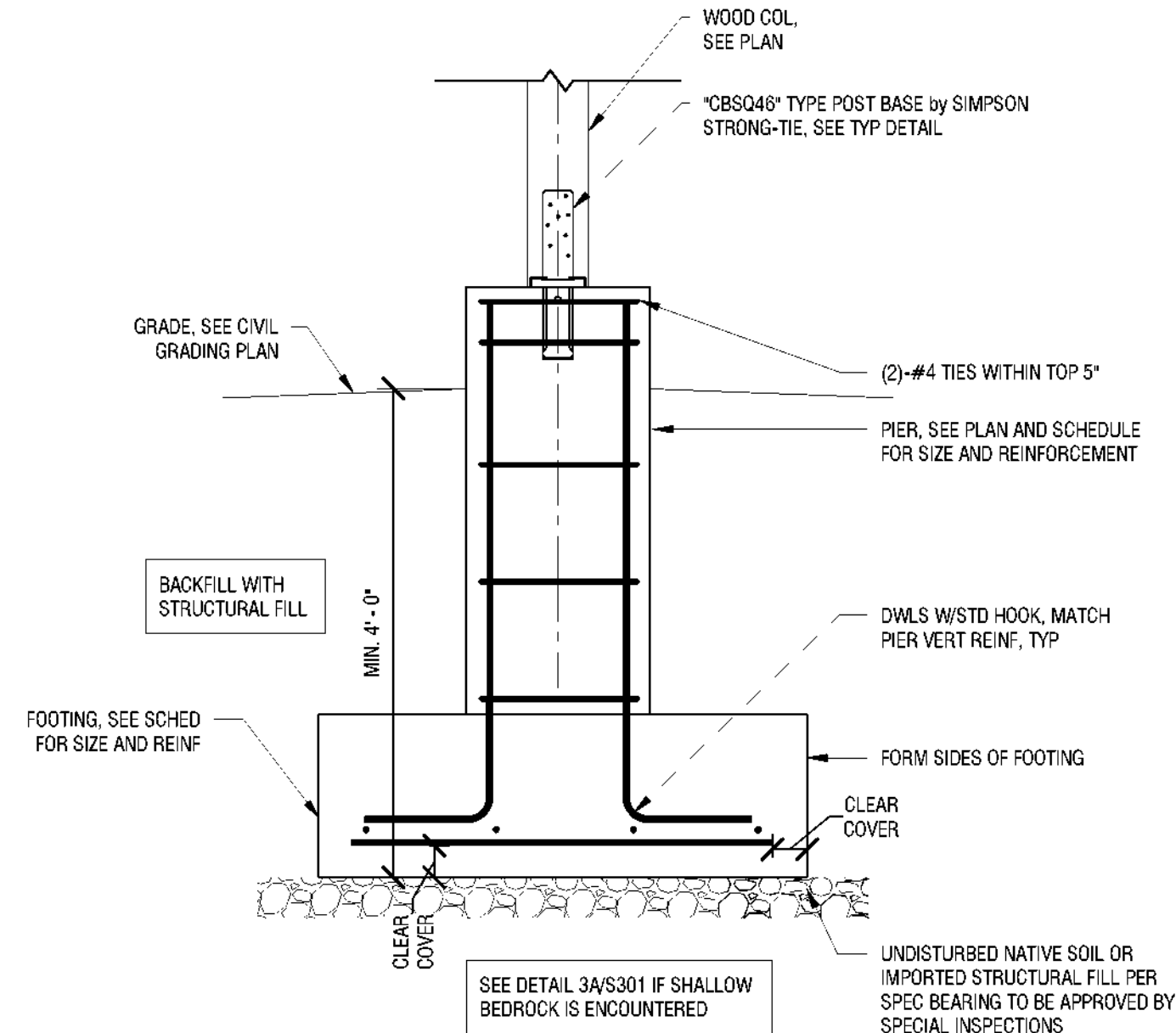
4/17/2023 11:21:57 AM - NOT FOR CONSTRUCTION



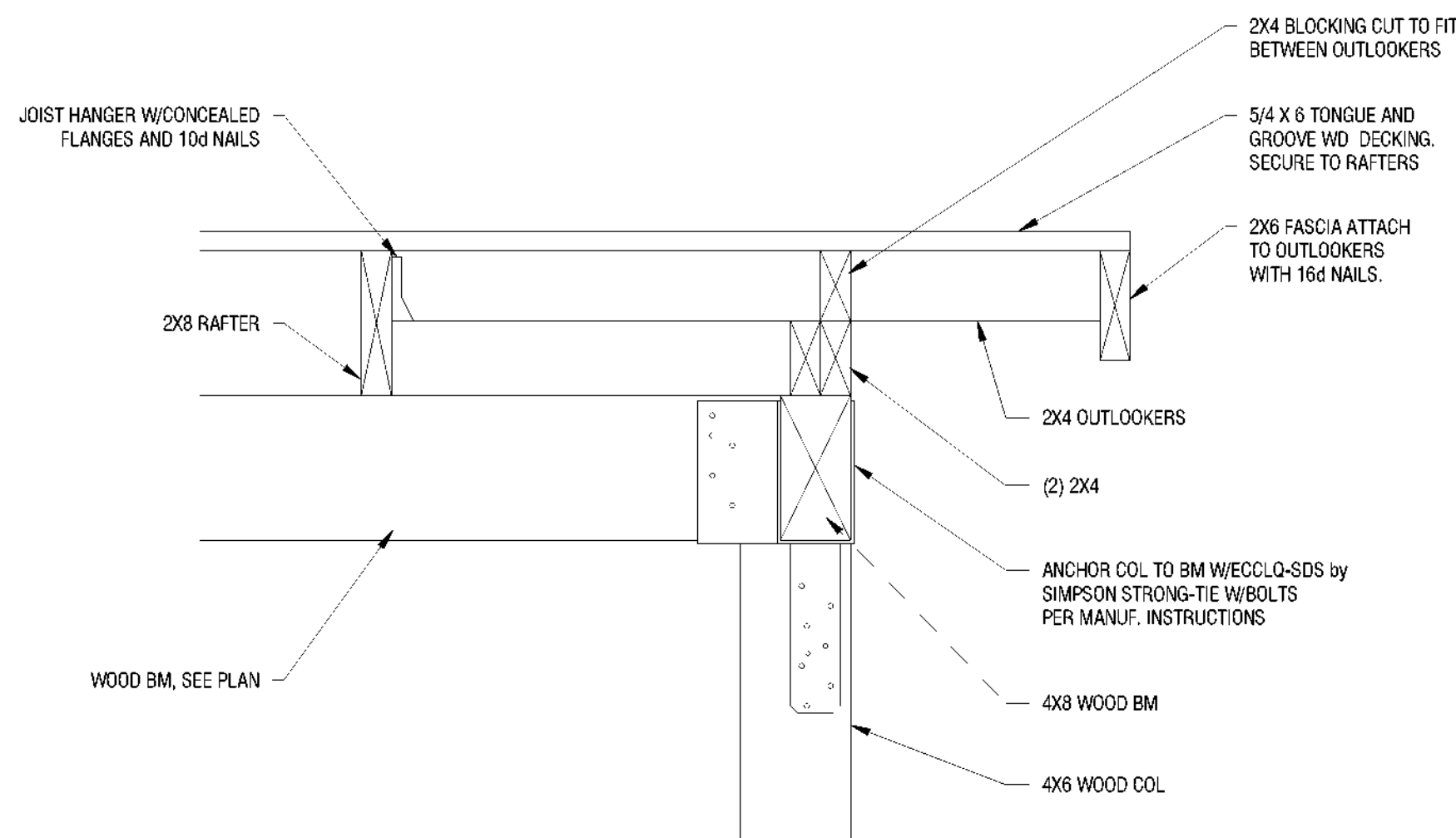
3A TYPICAL PIER AND FOOTING AT BEDROCK
S301 3/4" = 1'-0"



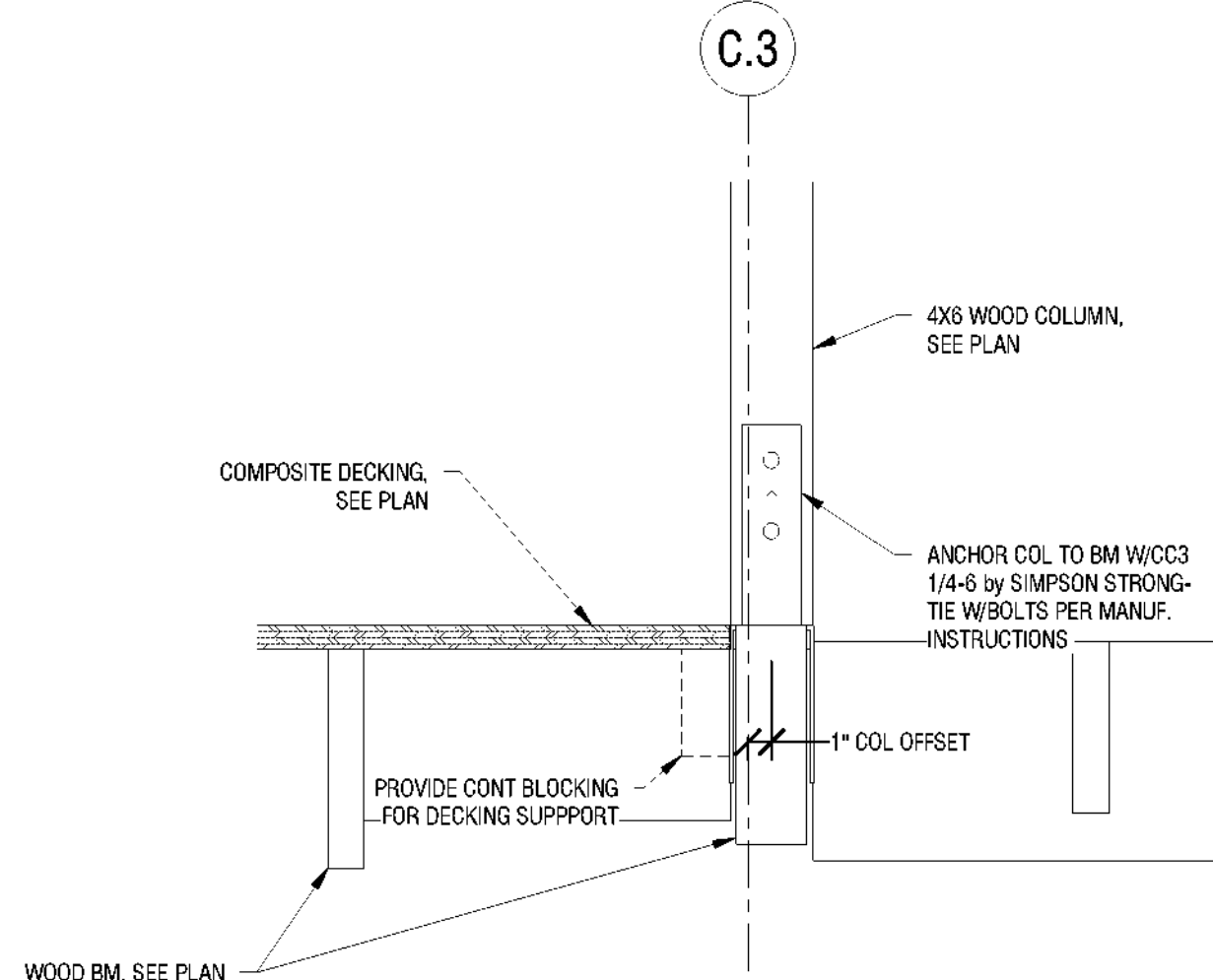
6 TYPICAL TRUSS AND BEAM AT COLUMN
S301 1 1/2" = 1'-0"



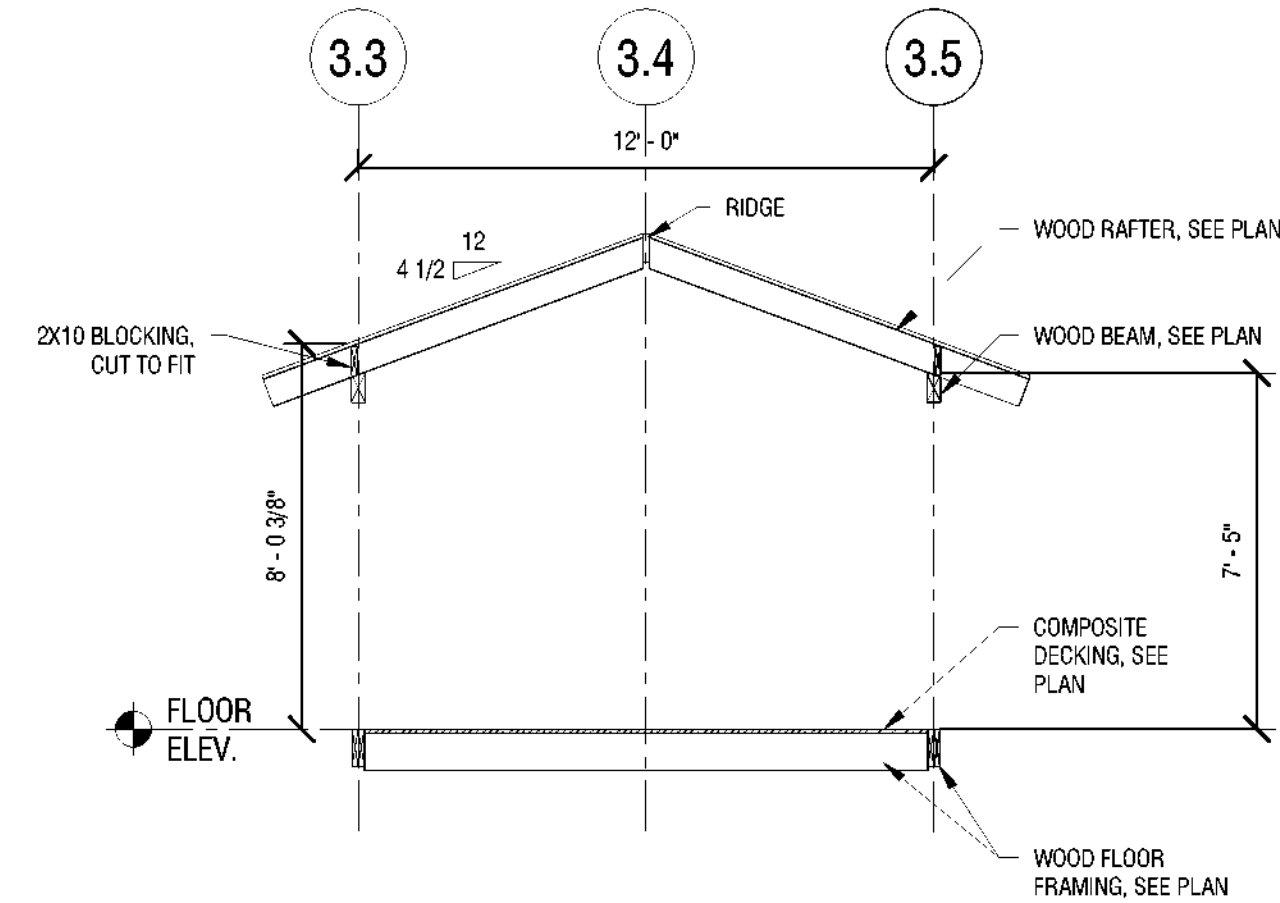
3 TYPICAL PIER AND FOOTING
S301 3/4" = 1'-0"



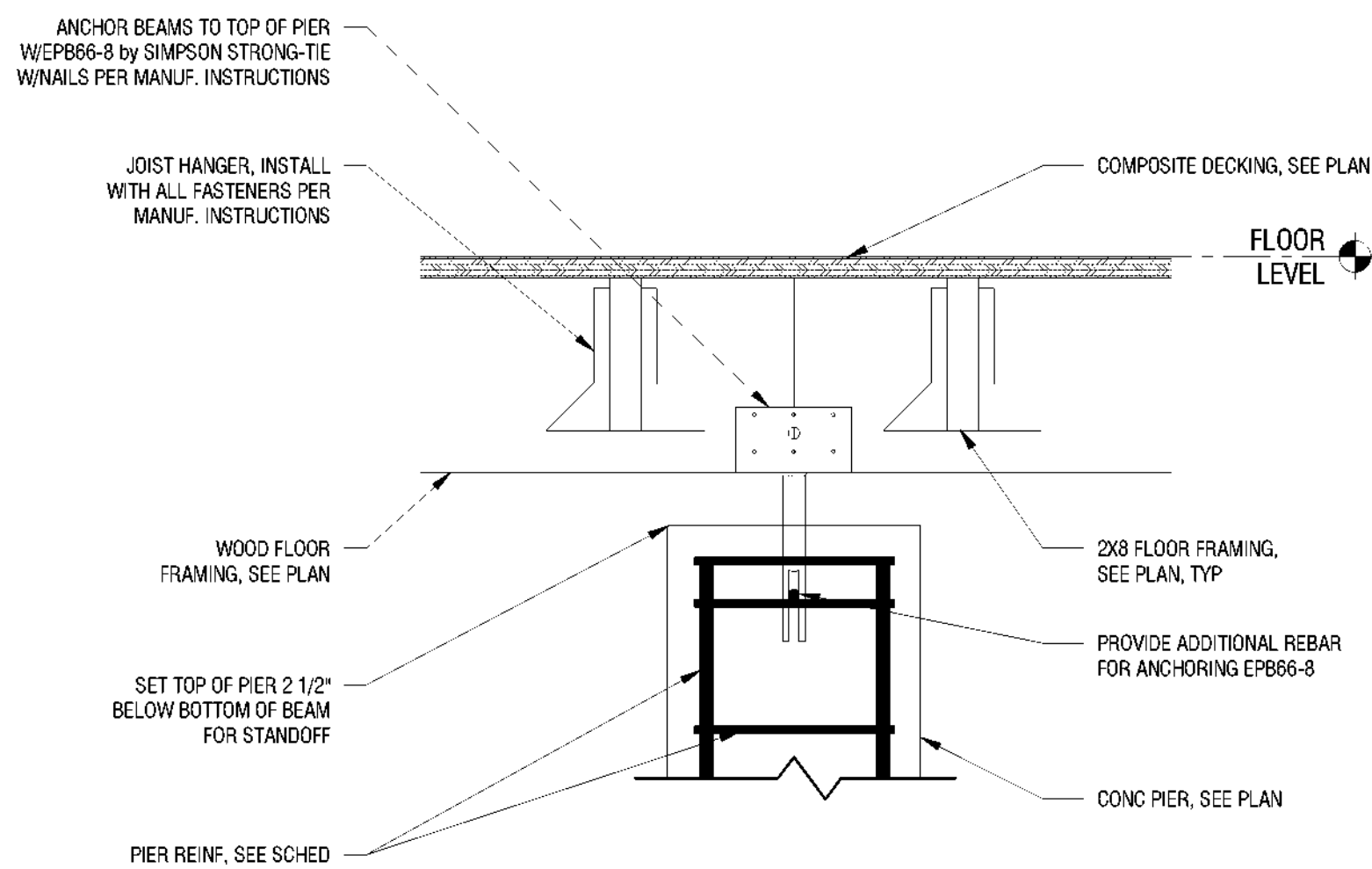
8 TYPICAL TRUSS AT END
S301 1 1/2" = 1'-0"



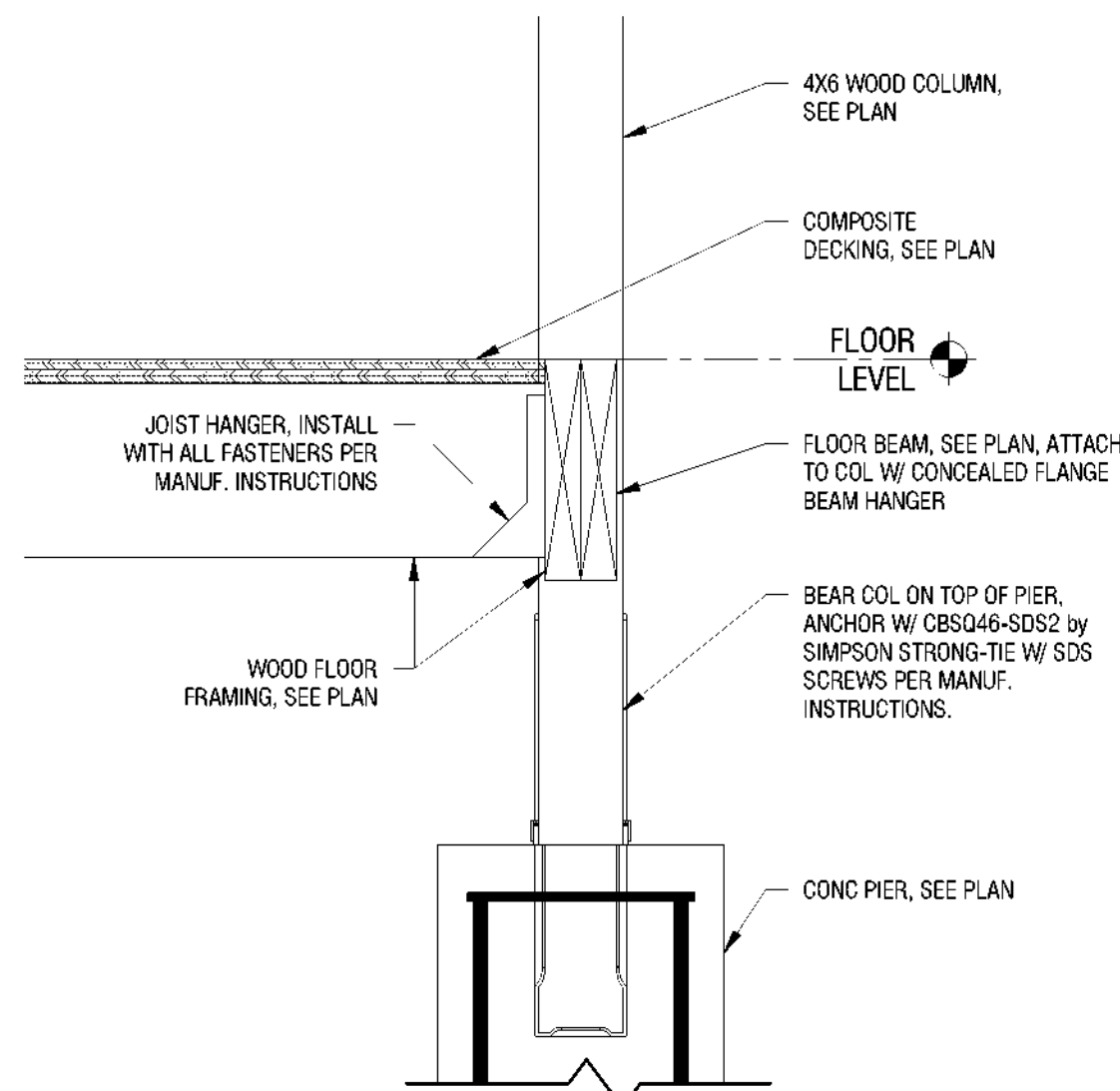
5 COLUMN ON BEAM
S301 1 1/2" = 1'-0"



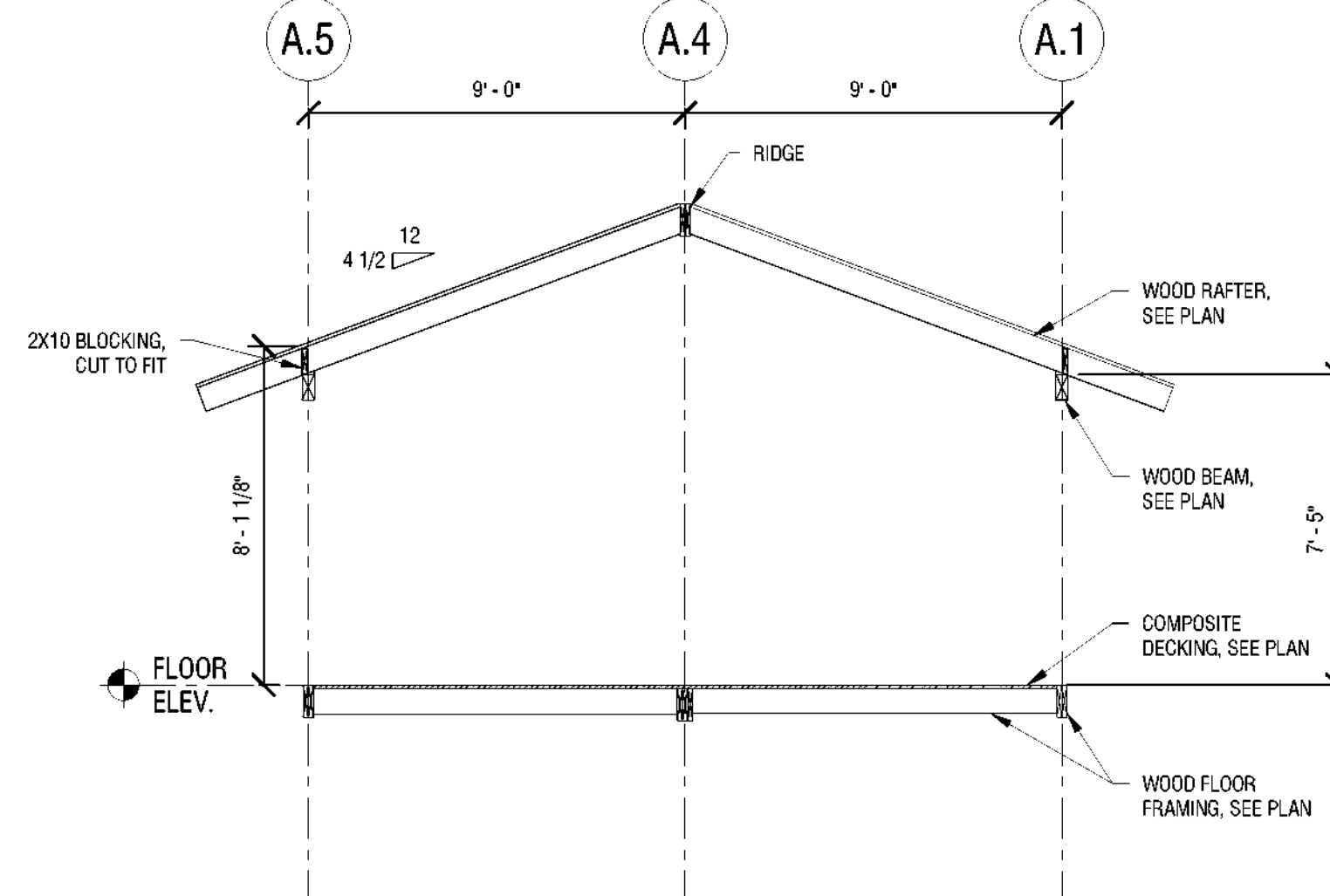
2 TYPICAL SECTION THROUGH LATRINE #427
S301 1/4" = 1'-0"



7 WOOD FRAMING TO CONCRETE PIER CONNECTION
S301 1 1/2" = 1'-0"



4 TYPICAL COLUMN BEARING AT PIER
S301 1 1/2" = 1'-0"



1 TYPICAL SECTION THROUGH BATHHOUSE
S301 1/4" = 1'-0"

REVISIONS		
Rev No	Description	Date

Drawn By: MCRB	Seal and Signature 
Design By: MCM	
Checked By: MCM	
Approved By: MCM	
Date: 3/16/23	

Sheet Title: TYPICAL SECTIONS AND DETAILS	Drawing Number: S301
Bid Documents Project Number: 2222163.05	Sheet: