

GENERAL NOTES

- GENERAL CONTRACTOR TO PROVIDE ALL ROOF PENETRATIONS REQUIRED TO ACCOMMODATE HVAC EQUIPMENT OPENINGS AND SET CURBS. HVAC CONTRACTOR TO COORDINATE EXACT LOCATION OF PENETRATIONS WITH G.C. AND SHALL ASSIST WITH SETTING ALL HVAC EQUIPMENT ROOF CURBS. HVAC CONTRACTOR SHALL BE RESPONSIBLE FOR TEMPORARY CAP OF ALL ROOF PENETRATIONS IN INTERIM FROM TIME PENETRATIONS ARE COMPLETE TO TIME EQUIPMENT IS SET ON ROOF CURBS. GENERAL CONTRACTOR SHALL BE RESPONSIBLE FOR FLASHING ALL EQUIPMENT CURBS AND OTHER HVAC RELATED ROOF PENETRATIONS. HVAC CONTRACTOR SHALL REMOVE AND DISPOSE OF TEMPORARY CAP WHEN EQUIPMENT IS SET IN PLACE.
- PROVIDE 45 DEGREE SHOE-TAP FITTING AND VOLUME DAMPER AT ALL BRANCH DUCT TAKE-OFFS (TOP, SIDE AND BOTTOM) FOR EXHAUST AIR, UNLESS SHOWN OR NOTED OTHERWISE
- COORDINATE HVAC INSTALLATION WITH STRUCTURE, CEILING, LIGHTING, CONDUIT, HEATING AND DOMESTIC PIPING, STORM AND SANITARY DRAIN PIPING (ALL TRADES). PREPARE AND SUBMIT FULL COORDINATION DRAWINGS FOR APPROVAL BY ENGINEER PRIOR TO ORDERING MATERIALS AND/OR BEGINNING CONSTRUCTION.
- ALL 90 DEGREE RECTANGULAR ELBOWS AND DUCTWORK TEES SHALL BE HARD MITERED WITH FACTORY TURNING VANES.
- ALL DUCTWORK PASSING THROUGH NON-FIRE RATED WALLS TO BE SEALED AROUND PERIMETER (BOTH SIDES) WITH DRYWALL JOINT COMPOUND OR APPROVED EQUAL.
- ALL SUPPORT OF EQUIPMENT, DUCTWORK AND ASSOCIATED DISTRIBUTION SERVICES SHALL BE DESIGNED AND INSTALLED IN ACCORDANCE WITH THE BUILDING CODE OF NEW YORK STATE.
- WORK INDICATED ON THIS SHEET SHALL BE PERFORMED BY THE MECHANICAL CONTRACTOR (MC) UNLESS OTHERWISE NOTED.
- COORDINATE ALL WORK WITH ELECTRICAL CONTRACTOR (EC).
- COORDINATE ALL WORK WITH GENERAL CONTRACTOR (GC). FLASHING AT EXTERIOR WALL SHALL BE BY GENERAL CONTRACTOR. MC SHALL PROVIDE VARIABLE SPEED CONTROLLER IN BOX NEAR FAN, WITH RACEWAY AND CONDUCTORS FROM EXHAUST FAN TO SUCH CONTROLLER.
- ALL CONDUIT AND WIRING SHALL CONFORM TO THE ELECTRICAL SPECIFICATIONS AND CONTRACT DRAWINGS UNLESS OTHERWISE NOTED. THE CONDUIT AND WIRING FROM THE ELECTRIC PANEL UP TO BUT NOT INCLUDING THE SPEED CONTROLLER SHALL BE BY THE ELECTRICAL CONTRACTOR. THE SPEED CONTROLLER AND ALL CONDUIT AND WIRING BETWEEN THE CONTROLLER COMPONENTS AND THE UNIT SHALL BE BY THE MECHANICAL CONTRACTOR AND SHALL CONFORM TO THE ELECTRICAL SPECIFICATIONS AND CONTRACT DRAWINGS.
- EC SHALL PROVIDE DISCONNECTS, OCCUPANCY SENSORS AND ALL CONDUCTORS, RACEWAY AND BOXES TO EXHAUST FANS. EC SHALL CONNECT MC'S VARIABLE SPEED CONTROLLER TO DISCONNECT (BY EC), WALL OCCUPANCY SENSOR (BY EC) AND POWER FEED (BY EC) AND PROVIDE REQUIRED RACEWAY AND CONDUCTORS. COORDINATION NOTE: EXHAUST FAN PROVIDED BY MECHANICAL CONTRACTOR. POWER CONNECTION AND OCCUPANCY CONTROLS, CONDUCTORS, RACEWAY BY ELECTRICAL CONTRACTOR.
- GENERAL CONTRACTOR SHALL PROVIDE ALL PLATE PROTECTION FOR CONCEALED ELECTRICAL CONDUCTORS AND PLUMBING LINES AT ALL PLATES AND STUDS AS REQUIRED.
- DO NOT CUT THRU FRAMING UNLESS APPROVED BY DIRECTOR'S REPRESENTATIVE.
- ALL DUCTWORK/HVAC EQUIPMENT SHALL BE A MINIMUM OF 7'-6" ABOVE FINISHED FLOOR.

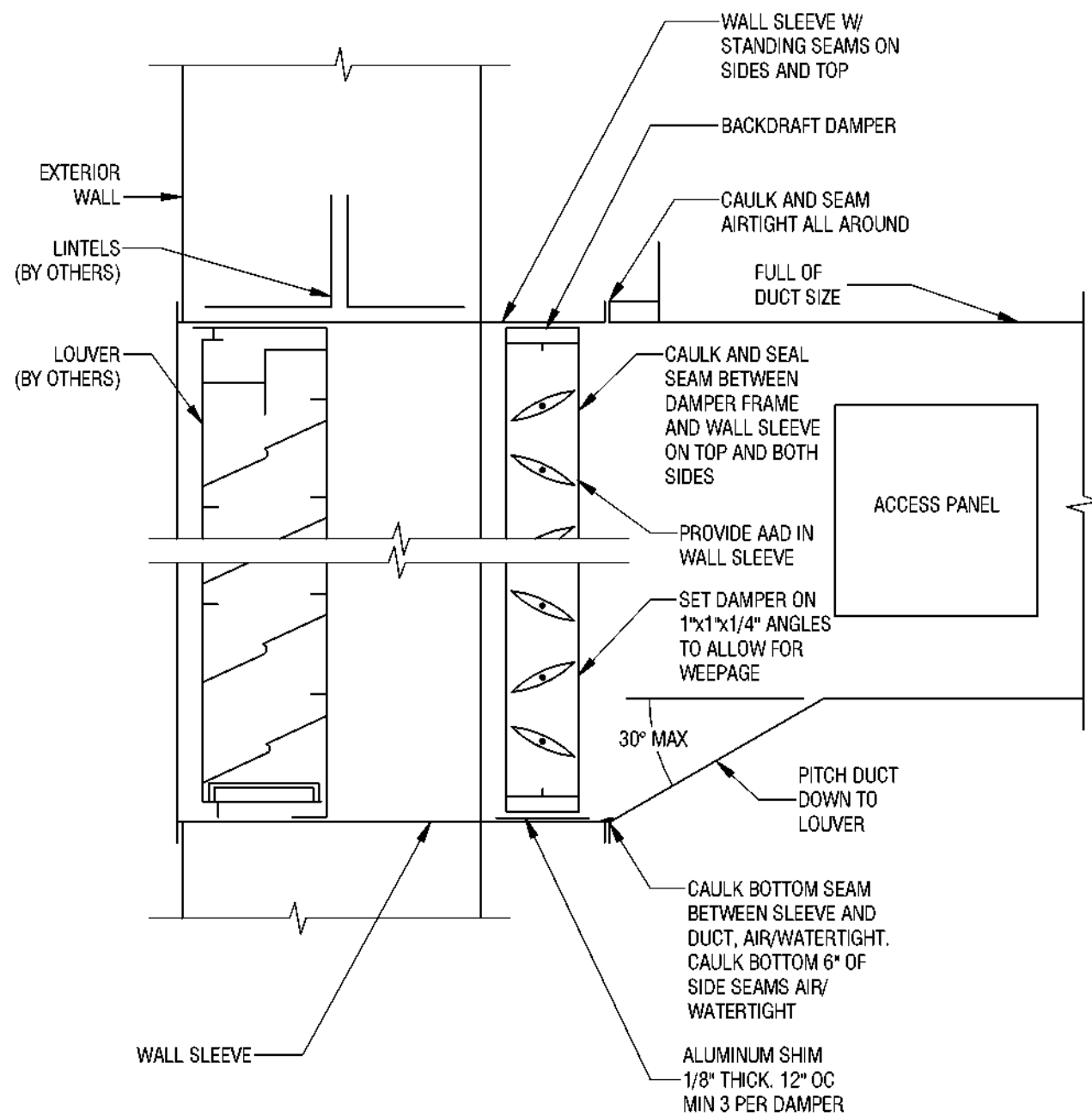
APPLICABLE CODES

- BUILDING CODE OF NEW YORK STATE
- ENERGY CODE OF NEW YORK STATE
- MECHANICAL CODE OF NEW YORK STATE
- FIRE CODE OF NEW YORK STATE
- PLUMBING CODE OF NEW YORK STATE
- ENERGY CONSERVATION CODE OF NEW YORK STATE
- ACCESSIBLE AND USABLE BUILDING AND FACILITIES-CADG AND AS 117.1
- NATIONAL ELECTRIC CODE
- NATIONAL FIRE CODE NFPA 13

DRAWING SYMBOLS

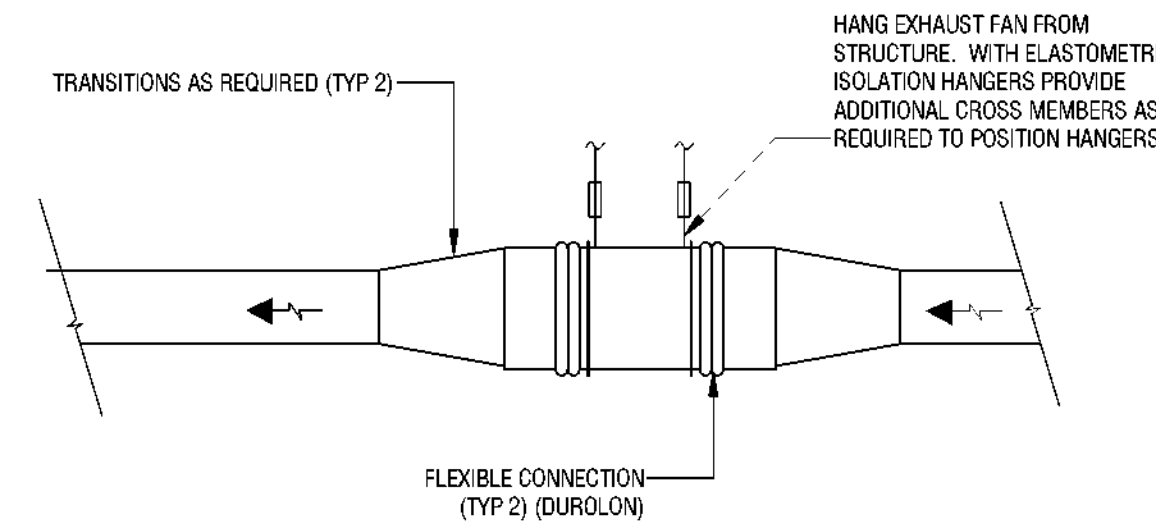
- EXISTING DUCTWORK, PIPE, EQUIPMENT
NEW DUCTWORK, PIPE, EQUIPMENT
DUCTWORK, PIPE, EQUIPMENT TO BE REMOVED
KEYNOTE
RETURN AIR
SUPPLY AIR
DUCT (DIMENSIONS SHOWN IN DUCT, DIMENSIONS IN INCHES.)
DUCT (DIMENSIONS SHOWN BY LEADER, DIMENSIONS IN INCHES.)
INSULATED DUCT (DIM. IS INTERNAL)
MITERED ELBOW W/ TURNING VANES
EXHAUST GRILLE
REGISTER OR GRILLE - TOP NUMBER REPRESENTS TAG, SEE SCHEDULE; BOTTOM NUMBER REPRESENTS CFM. NUMBER UNDER TAG REPRESENTS DUCT CONNECTION SIZE

NOTE:
NOT ALL SYMBOLS, ABBREVIATIONS AND EQUIPMENT DESIGNATIONS MAY APPLY TO THIS PARTICULAR PROJECT. ANY ADDITIONS OR OMISSIONS FROM THIS LEGEND SHEET DOES NOT IMPLY INCLUSION AND/ OR EXCLUSIONS OF ANY PARTICULAR ITEM FROM THIS PROJECT.



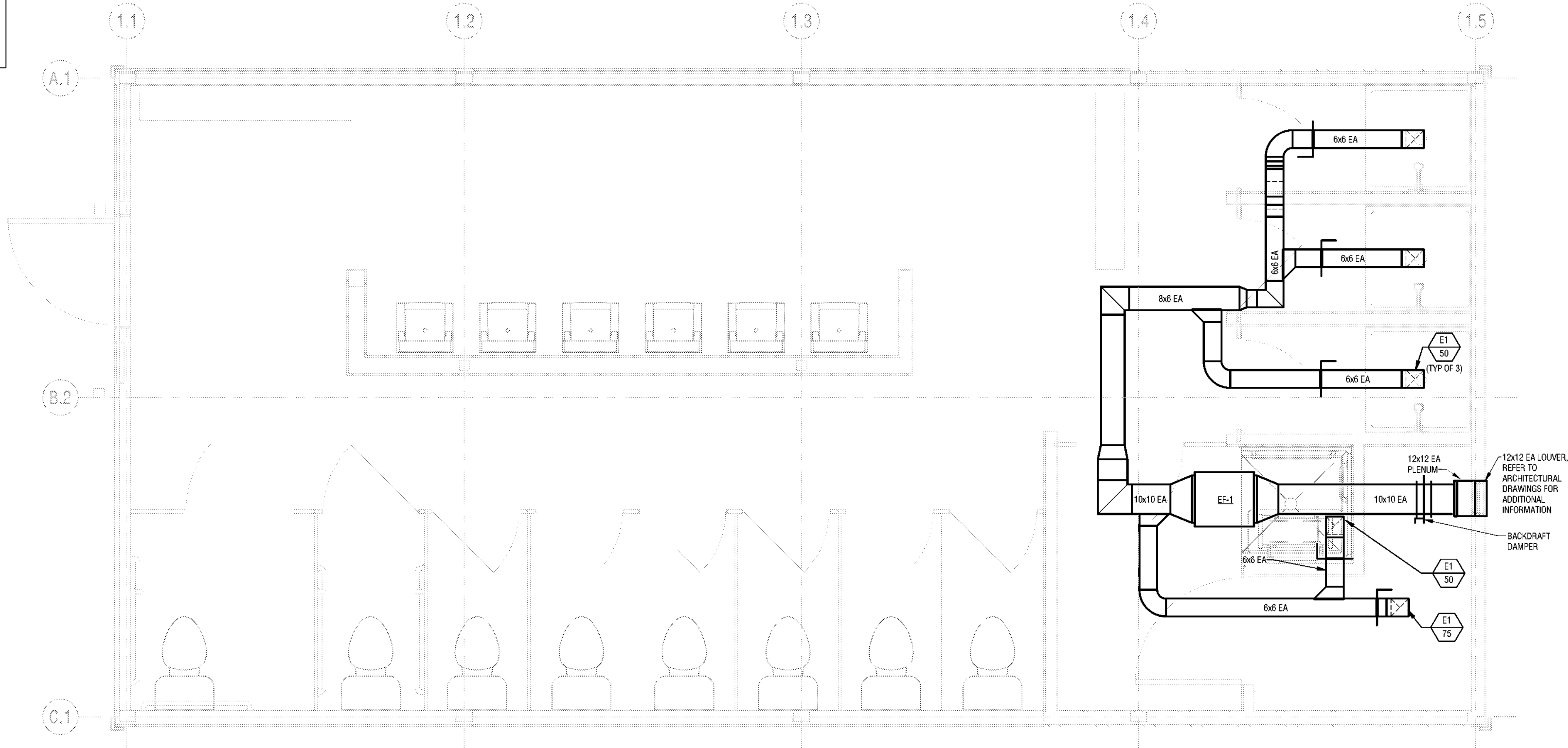
LOUVER DETAIL

3
M101
NONE



EXHAUST FAN DETAIL (IN-LINE)

2
M101
NONE



BATHHOUSE 231 AND 322 MECHANICAL PLAN

1
M101
1/2" = 1'-0"

EXHAUST FAN SCHEDULE

UNIT	SERVICE	CFM	ESP (IN WG)	DRIVE TYPE	FAN TYPE	FAN RPM	MAX SONE LEVEL	MOTOR DATA			DESIGN BASIS	NOTES
EF-1	BUILDING EXHAUST - BATHHOUSE 231	275	1.0	DIRECT	CENTRIFUGAL	1570	13	1550	115	1	1/6	LOREN COOK 120SQM17D 1,2,3
EF-2	BUILDING EXHAUST - BATHHOUSE 322	275	1.0	DIRECT	CENTRIFUGAL	1570	13	1550	115	1	1/6	LOREN COOK 120SQM17D 1,2,3

- NOTES:
1. PROVIDE WITH FACTORY MOUNTED DISCONNECT.
2. PROVIDE WITH FACTORY MOUNTED FAN SPEED CONTROLLER.
3. EXHAUST FAN SHALL BE CONTROLLED BY OCCUPANCY SENSOR (PROVIDED BY EC).

REGISTER, GRILLES, AND DIFFUSERS

TYPE	SERVICE	DESCRIPTION	MAX NO.	DESIGN BASIS	NOTES
E1	EXHAUST	HEAVY DUTY GRILLE - 10x10 SIZE	25	TITUS 63FL	-



Governor Kathy Hochul Commissioner Erik Kulesseid

ARCHITECT:
Saratoga Associates
21 Congress Street, Suite 201
Saratoga Springs, NY 12866
Landscape Architects, Architects, Engineers, and Planners, P.C.

SURVEYOR/STRUCTURAL/MEP ENGINEER:

LaBella Associates
300 State Street, Suite 2012
Rochester, NY 14614
Certificate of Authorization Number:
Professional Engineering: 018281
Land Surveying: 017978
Geological: 018750

Palisades Region
Palisades Interstate Park Commission
Bear Mountain, New York 10911
(845) 786-2701
Executive Director: Joshua Laird

Project Title:
CAMP JUNIOR ON LAKE TIORATI - PHASE 3

Project Location:
HARRIMAN STATE PARK

Key Plan

REVISIONS

Rev No.	Description	Date

Drawn By:
NAF
Design By:
NAF
Checked By:
JMD
Approved By:
JMD
Date:
3/16/2023
Sheet Title:
CAMP JUNIOR MECHANICAL PLANS
Bid Documents
Project Number:
2222163.05

Seal and Signature
JEREMY M. LAIRD
076827
PROFESSIONAL ENGINEER
EXP: 08/21/2025
Drawing Number:
M101