

	VENT
	SANITARY DRAIN
	DOMESTIC COLD WATER
	DOMESTIC HOT WATER SUPPLY
	DOMESTIC HOT WATER RETURN
	BRANCH OFF TOP OF PIPE
	BRANCH OFF BOTTOM OF PIPE
	PIPE TURNED UP
	PIPE TURNED DOWN
	PIPE BREAK
	BALL VALVE
	KEY NOTE

- DO NOT SHUT DOWN ANY PLUMBING OR RELATED SYSTEMS WITHOUT BUILDING OWNERS PRIOR WRITTEN APPROVAL. FOLLOW ALL OWNER REQUIREMENTS AND SHUT DOWN PROCEDURES AS WELL AS ALL REQUIREMENTS OF THIS PRODUCT.
- 2 IF REQUIRED, PROVIDE SHUT DOWNS AND TIE-INS DURING OFF HOURS TO AVOID DISRUPTION OF BUILDING SYSTEMS. COORDINATE ALL SHUT DOWN REQUIREMENTS PRIOR TO SUBMITTING BID (INCLUDE ALL REQUIRED DURING OFF HOURS IN BID).
- 3 PROVIDE ALL WORK IN COMPLIANCE WITH ALL LOCAL, STATE AND FEDERAL CODES. OBTAIN ALL REQUIRED PERMITS.
- 4 PROVIDE ALL REQUIRED EXCAVATION, BACKFILL, AND COMPACTION FOR ALL UNDERGROUND WORK.
- 5 FIELD VERIFY EXACT LOCATION, DEPTH, COMPOSITION AND CONDITION OF ALL PIPING, VALVES AND SYSTEMS AS REQUIRED FOR WORK OF THE CONTRACT.
- 6 PROVIDE SCHEDULE 40 BLACK STEEL PIPE SLEEVES FOR ALL UNDERGROUND PIPING PASSING THROUGH OR UNDER FOOTINGS, WALLS, FOUNDATION WALLS, SLABS FLOORS AND/OR UNDERGROUND STRUCTURES. REFER TO THE PROJECT SPECIFICATIONS FOR ADDITIONAL REQUIREMENTS.
- 7 WHERE PIPING IS LOCATED OVER FOOTINGS AND/OR OTHER UNDERGROUND STRUCTURES, ROLL DOWN AS REQUIRED TO CONNECT TO SYSTEMS NOTED. PROVIDE ALL REQUIRED OFFSETS, FITTINGS AND CONNECTIONS.
- 8 PITCH ALL SANITARY, WASTE, AND STORM PIPING AS FOLLOWS: PIPING SMALLER THAN 3", PITCH AT 2 PERCENT (1/4" PER FOOT) MINIMUM. 3" AND LARGER, PITCH AT 1 PERCENT (1/8" PER FOOT) MINIMUM.
- 9 CONNECT TO SITE PIPING OUTSIDE BUILDING AS SHOWN. PROVIDE ALL REQUIRED OFFSETS, FITTINGS AND CONNECTIONS. FIELD VERIFY EXACT LOCATION, DEPTH AND COMPOSITION OF SITE SERVICES AND COORDINATE ALL WORK WITH SITE CONTRACTOR.
- 10 COORDINATE ALL VENT TERMINATIONS ABOVE ROOF WITH HVAC CONTRACTOR. ALL VENT TERMINATIONS ABOVE ROOF SHALL BE A MINIMUM 10'-0" AWAY FROM ANY HVAC OUTDOOR AIR INTAKE (ROOFTOP UNIT, LOUVER, ETC.).
- 11 PROVIDE SINGLE HOSE BIBS WITH VACUUM BREAKER (HB) UNDER LAVATORY(S) IN ALL TOILET ROOMS FLOOR DRAINS. ONE REQUIRED PER ROOM.
- 12 REFER TO ARCHITECTURAL DRAWINGS AND THE PROJECT SPECIFICATIONS FOR ANY PROJECT PHASING REQUIREMENTS.
- 13 THE ENTIRE PLUMBING SYSTEM SHALL BE IN ACCORDANCE WITH THE LATEST EDITION OF THE PLUMBING CODE OF NEW YORK STATE AND LOCAL PLUMBING INSPECTOR.
- 14 CONTRACTOR SHALL COORDINATE AND PROVIDE ALL NECESSARY PIPING & PLUMBING FITTINGS, PIPING, MISCELLANEOUS ITEMS REQUIRED FOR A COMPLETE INSTALLATION OF ALL PLUMBING RELATED ITEMS.
- 15 PITCH ALL POTABLE WATER PIPING TO DRAIN BEFORE BUILDING SHUTOFF.
- 16 ALL PIPING PENETRATIONS THROUGH NEW WALL OR FLOOR SHALL BE SEALED TO EQUAL THE RATING OF THE NEW, EXISTING WALL OR FLOOR.
- 17 THE ENTIRE DOMESTIC WATER SYSTEM SHALL BE DISINFECTED IN ACCORDANCE TO THE LOCAL CODE & HEALTH DEPARTMENT REQUIREMENTS.
- 18 THE BACKFLOW PREVENTION DEVICE SHALL BE INSTALLED PER STATE AND LOCAL CODE & PER AUTHORITY HAVING JURISDICTION REQUIREMENTS.
- 19 ALL (VTR'S) VENT THRU ROOF PENETRATIONS INDICATED ON PLANS ARE PRELIMINARY. FINAL LOCATIONS SHALL BE COORDINATED WITH ALL TRADES.
- 20 CONTRACTOR SHALL INSULATE ALL PLUMBING PIPING PER SPECIFICATION.
- 21 MAINTAIN 3'-0" CLEARANCE IN FRONT OF ALL DOMESTIC WATER SYSTEM PIPING COMPONENTS AND ELECTRICAL DISTRIBUTION PANELS.
- 22 COORDINATE ELECTRICAL AND PLUMBING TRADES. DO NOT LOCATE PIPING ABOVE ELECTRICAL DISTRIBUTION PANELS, WITHIN 6'-0" ABOVE THE TOP OF THE PANEL (OR THE STRUCTURAL CEILING, WHICHEVER IS LOWER).
- 23 THE PLUMBING CONTRACTOR SHALL COORDINATE ALL VERTICAL AND HORIZONTAL RUNS WITH GENERAL CONTRACTOR PRIOR TO FRAMING. GENERAL CONTRACTOR SHALL PROVIDE ALL PLATE PROTECTION FOR CONCEALED LINES AT ALL PLATES AND STUDS AS REQUIRED. DO NOT CUT THRU FRAMING UNLESS APPROVED BY DIRECTORS REPRESENTATIVE.
- 24 ALL WORK ON THESE PLUMBING DRAWINGS SHALL BE PERFORMED BY THE PLUMBING CONTRACTOR UNLESS NOTED OTHERWISE.
- 25 COORDINATE LOCATION AND ROUTING OF PLUMBING LINES WITH OTHER TRADES.

1. BUILDING CODE OF NEW YORK STATE
2. MECHANICAL CODE OF NEW YORK STATE
3. FIRE CODE OF NEW YORK STATE
4. PLUMBING CODE OF NEW YORK STATE
5. ENERGY CONSERVATION CONSTRUCTION CODE OF NEW YORK STATE
6. ACCESSIBLE AND USUABLE BUILDING AND FACILITIES-CABO/ANSI A117.1
7. NATIONAL ELECTRIC CODE
8. NFPA 13: STANDARD FOR THE INSTALLATION OF SPRINKLER SYSTEMS

<u>CO</u>	CLEANOUT
<u>DWH</u>	DOMESTIC WATER HEATER
<u>ET</u>	EXPANSION TANK
<u>EWG</u>	ELECTRIC WATER COOLER
<u>EWH</u>	ELECTRIC WATER HEATER
<u>HB</u>	HOSE BIBB
<u>LAV</u>	LAVATORY
<u>MS</u>	MOP SINK
<u>P</u>	PUMP
<u>SA</u>	SHOCK ABSORBER (WATER HAMMER ARRESTOR)
<u>SH</u>	SHOWER
<u>UR</u>	URINAL
<u>WC</u>	WATER CLOSET
<u>WCO</u>	WALL CLEANOUT

UNIT	BUILDING	SERVICE	LOCATION	ELECTRICAL DATA		DIMENSIONS	MANUFACTURER	MODEL	NOTES
				TOTAL WATTS	V/PhHz				
EWH-1	BATHHOUSE 231	DOMESTIC HOT WATER	MECH ROOM	12300	240/160	30" x 70" H	LOCHINVAR	LCA-120AKW	-
EWH-2	BATHHOUSE 322	DOMESTIC HOT WATER	MECH ROOM	12300	240/160	30" x 70" H	LOCHINVAR	LCA-120AKW	-
EWH-3	LATRINE 427	DOMESTIC HOT WATER	UNDER SINK	1400	115/160	9" L x 9" W x 15" H	EEMAX	EMT1	-
EWH-4	LATRINE 427	DOMESTIC HOT WATER	UNDER SINK	1400	115/160	9" L x 9" W x 15" H	EEMAX	EMT1	-

UNIT	TRIM	PIPING CONNECTION (IN)				SUPPORT	REMARKS	MANUFACTURER	MODEL
		SOLD	HOT	COLD	VENT				
HB-1	-	1/2	-	-	-	WALL MOUNTED	-	CHICAGO FAUCETS	952-CP
SH-1	-	1/2	1/2	3	2	WALL MOUNTED	ADA	POWERS	450-103SC
SH-2	-	1/2	1/2	3	2	WALL MOUNTED	-	POWERS	450-4002
WC-1	A	1/2	-	4	2	FLOOR MOUNTED	ADA	AMERICAN STANDARD	2155A 104
WC-2	A	1/2	-	4	2	FLOOR MOUNTED	-	AMERICAN STANDARD	2155A 104
LAV-1	B	1/2	1/2	1-1/2	1-1/2	WALL MOUNTED	ADA	GERBER	PLYMOUTH 60012314
LAV-2	C	1/2	1/2	1-1/2	1-1/2	WALL MOUNTED	-	GERBER	PLYMOUTH 60012314
FD-1	-	-	-	3	2	FLOOR MOUNTED	-	ZURN	24158
MS-1	E	3/4	3/4	3	2	FLOOR MOUNTED	-	ELKAY	FLR-1X

A. 1/2" STEEL/STEEL METAL BRAIDED HOSE SUPPLY WITH ESCUTCHION AND 1/4" TURN ANGLE STOP, 1.28 GPF, HEAVY WEIGHT INJECTION MOLDED SOLID PLASTIC, BLACK ELONGATED STAMP, OPEN FRONT LESS COVER WITH STEEL/STEEL SELF SUSTAINING CHECK HINGES, SIMILAR TO BEIMS MODEL 1955-ST. PROVIDE FLOOR FLANGE, SEALANT AND ANCHOR BOLTS.

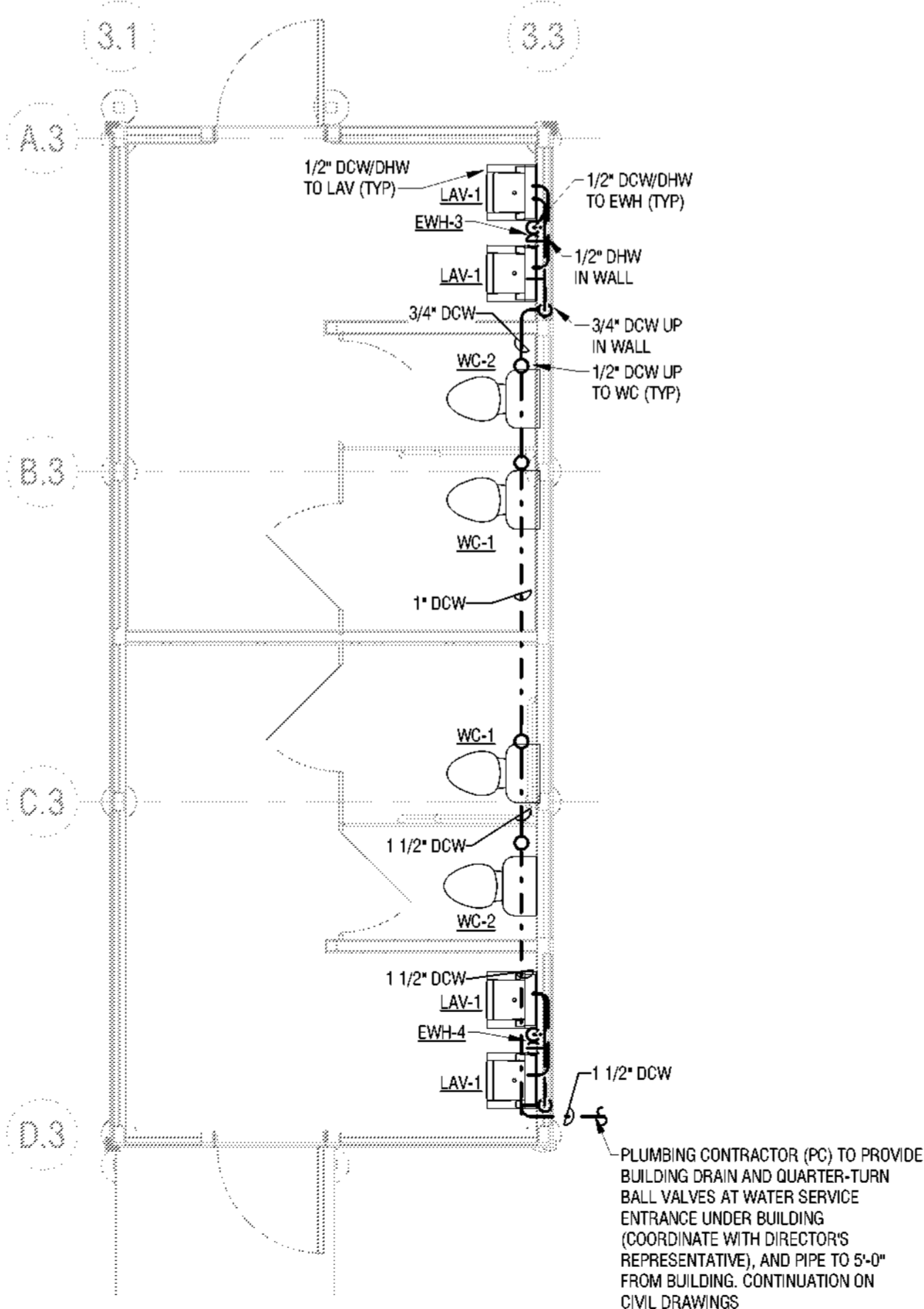
B. DECK MOUNTED CHROME PLATED DIE-CAST METAL FAUCET WITH INFRARED SENSOR, BATTERY-POWER SUPPLY, MULTI-LAMINAR SPRAY, 0.50 GPM, SIMILAR TO SLOAN SF-2450-8-BAT-TEE-CP-0.50GPM-MILW-R-FCI. ASSE 1072 APPROVED TEMPERING VALVE, SIMILAR TO POWERS MODEL LF4800. CHROME PLATED CAST BRASS SUPPLIES WITH LOOSE KEY ANGLE STOP AND SET-SCREW ESCUTCHION. PROVIDE TRAP AND SUPPLY COVERING TO MEET ADA REQUIREMENTS, SIMILAR TO "PRO-WRAP".

C. DECK MOUNTED CHROME PLATED DIE-CAST METAL FAUCET WITH METAL WRIST HANDLES, NON-MEETING, 0.60 GPM, 1/4" CENTERBRED, 1" RIGID SPY, SIMILAR TO GERBER G0045-452. ASSE 1072 APPROVED TEMPERING VALVE, SIMILAR TO POWERS MODEL LF4800. CHROME PLATED CAST BRASS GRID STRAINER WITH 1-1/4" NUT/PIECE, SIMILAR TO MCQUIRE MODEL 8902. CHROME PLATED CAST BRASS SUPPLIES WITH LOOSE KEY ANGLE STOP AND SET-SCREW ESCUTCHION.

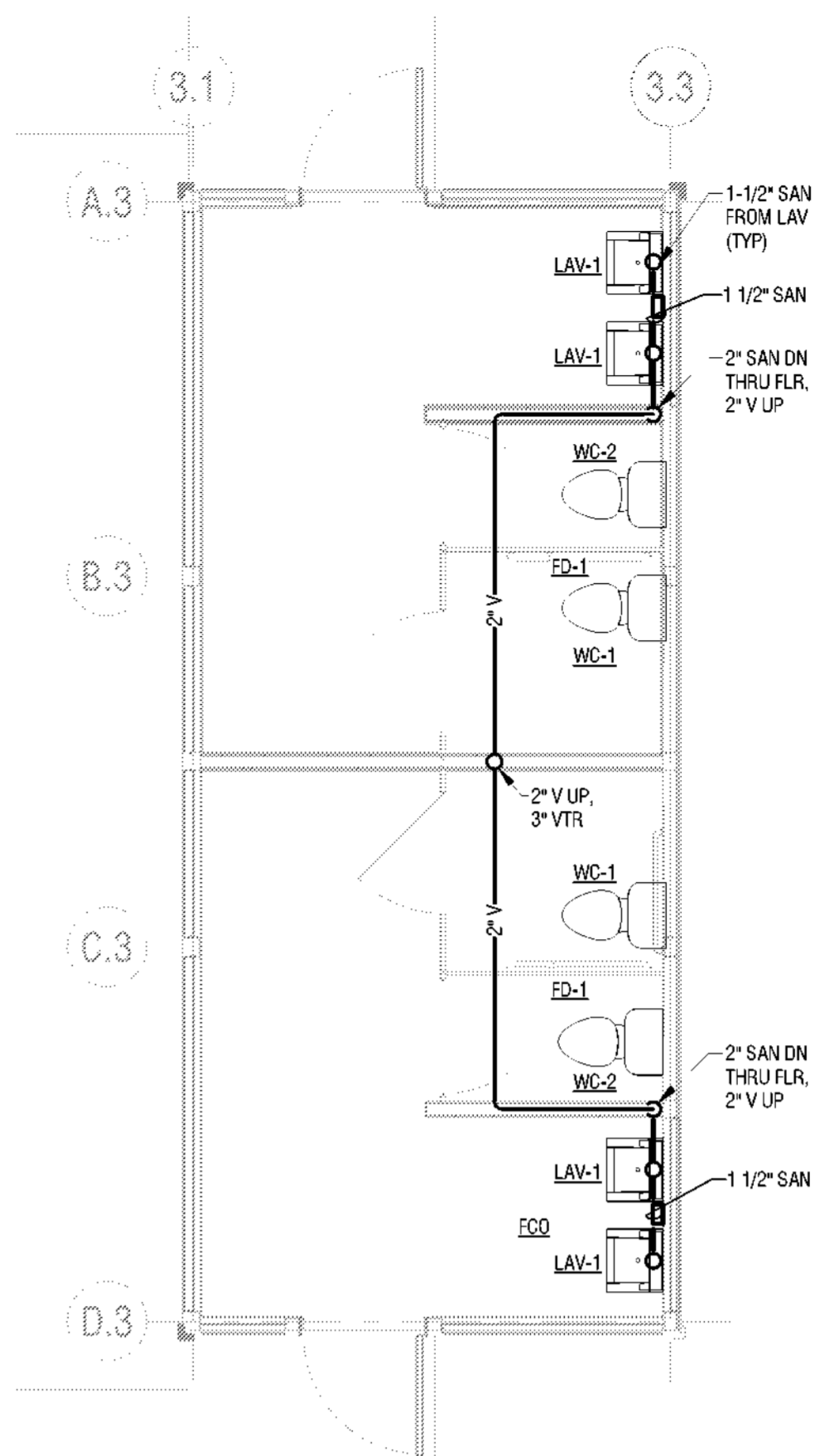
D. DEEP SEAL P-TRAP AND ASSE 1072 APPROVED MECHANICAL SEAL, SIMILAR TO "SURE-SEAL".

E. CHROME PLATED CAST BRASS VALVE FAUCET WITH VACUUM BREAKER, PALM HOOK, WALL BRACE AND HOSE OUTLET, SIMILAR TO FIAT MODEL 830-A4. STAINLESS STEEL HOSE BRACKET WITH RUBBER GIP AND HOSE, SIMILAR TO FIAT MODEL 832-A4. STAINLESS STEEL MOP HANGER SIMILAR TO FIAT MODEL 889-CC. VINYL PIPING OR GROMMETS, SIMILAR TO FIAT MODEL 877-A4. STAINLESS STEEL, WALL GUARDS ON ADJACENT WALLS SIMILAR TO FIAT MODEL MSQ242.

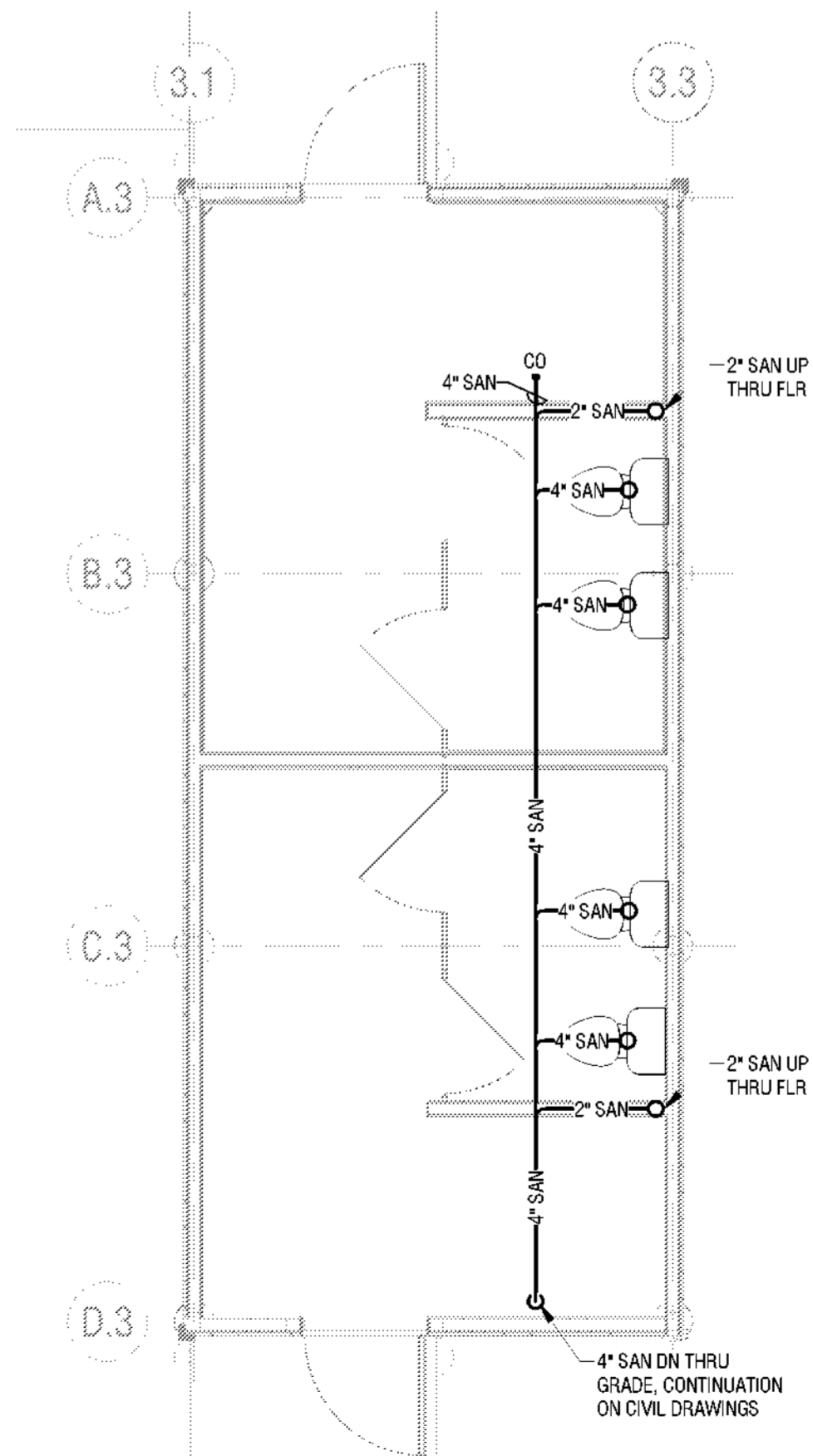
UNIT	LOCATION	GPM	FEET OF HEAD	PUMP HP (WATTS)	VOLTS	AMPS	MANUFACTURER	MODEL	NOTES
RP-1	WATER SERVICE ROOM	6	5	25	115	0.23	GRUNDFOS	UP15-10	-



7
P101



5
P101



$$\frac{4}{P101} \quad \text{UNDER} \quad 1/4'' = 1'-0''$$

[illegible]

PLUM

Project Number:
2222163.05

P101

Sheet