

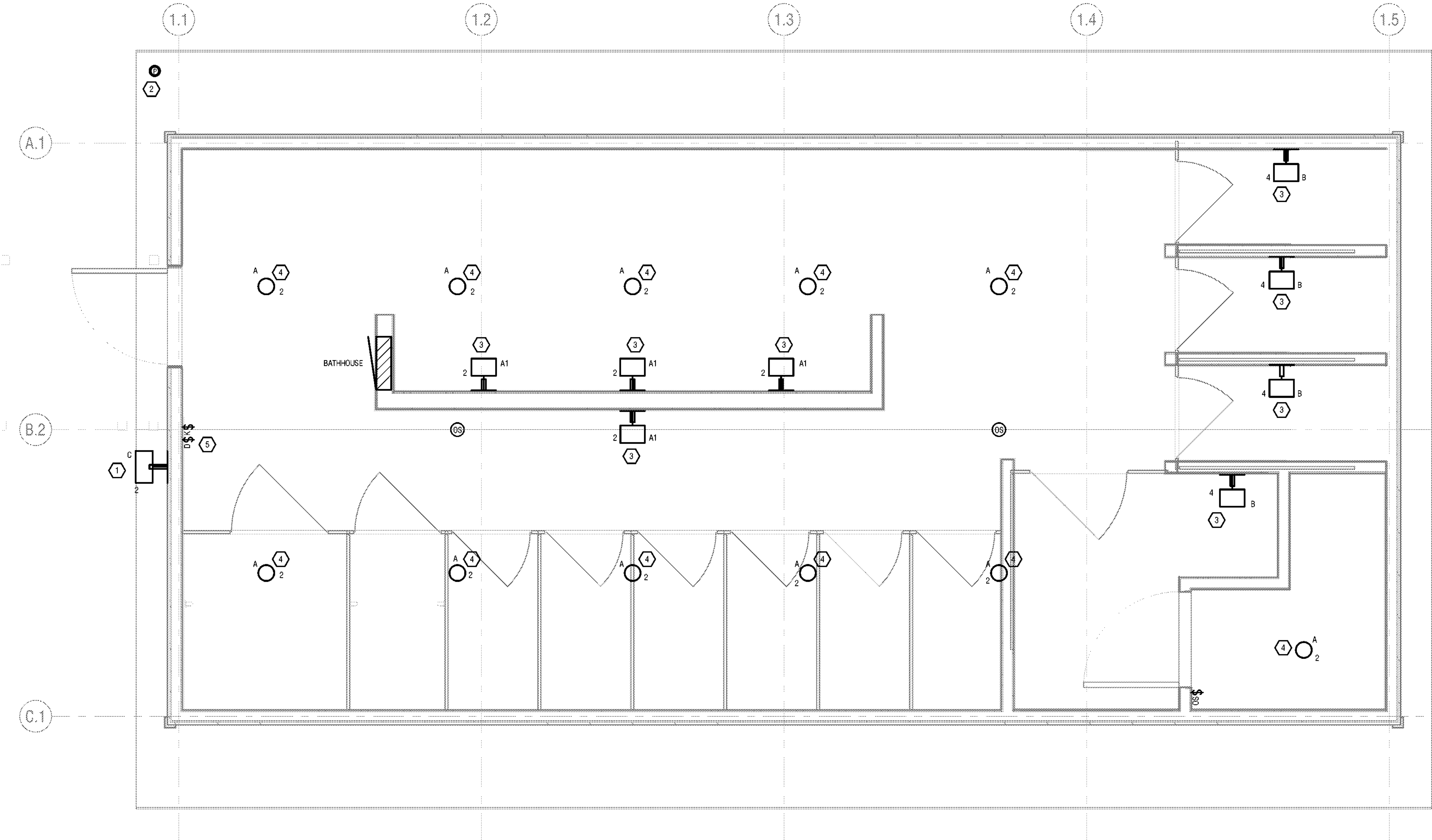
3/30/2023 8:46:11 AM

DRAWING NOTES:

A. CIRCUIT LIGHTING FIXTURES TOGETHER TO 20A/1P CIRCUIT BREAKER IN BATHHOUSE PANEL USING 2#12, 1#12G IN 1/20", CIRCUIT NUMBER AS INDICATED.

KEYED NOTES:

- 1 MOUNT FIXTURE AT 7'1" ABOVE FINISH FLOOR. FIXTURE SHALL BE CONTROLLED BY ROOF MOUNTED PHOTOCELL.
- 2 MOUNT PHOTOCELL TO THE SOFFIT FACING NORTH.
- 3 MOUNT BOTTOM OF FIXTURES AT 6'8" ABOVE FINISH FLOOR. FIELD VERIFY LOCATION PRIOR TO INSTALLATION.
- 4 MOUNT FIXTURE TO BLOCKING BETWEEN RAFTERS/TRUSS (BLOCKING BY GC).
- 5 MOUNT DIMMER SWITCH 6'2" ABOVE FINISH FLOOR AND ABOVE KEYED SWITCH.



1 BATHHOUSE #231 & #322 LIGHTING PLAN
E102 1/2" = 1'-0"



New York State
Parks, Recreation and
Historic Preservation

Governor Kathy Hochul

Commissioner Erik Killeseid

IT IS A VIOLATION OF STATE EDUCATION LAW FOR ANY PERSON, UNLESS UNDER THE DIRECTION OF A LICENSED ARCHITECT/ENGINEER, TO ALTER THIS DOCUMENT IN ANYWAY. ALTERATIONS MUST HAVE THE SEAL AFFIXED ALONG WITH A DESCRIPTION OF THE ALTERATIONS, DATE AND ARCHITECTS/ENGINEERS SIGNATURE. COPYRIGHT © 2023

ARCHITECT:

Saratoga Associates
21 Congress Street, Suite 201
Saratoga Springs, NY 12866

SARATOGA
ASSOCIATES

Landscape Architects, Architects,
Engineers, and Planners, P.C.

SURVEYOR/STRUCTURAL/
MEP ENGINEER:

LaBella Associates
300 State Street, Suite 201
Rochester, NY 14614



LaBella

Certificate of Authorization Number:
Professional Engineering: 015281
Land Surveying: 017975
Geological: 018750

Palisades Region
Palisades Interstate Park Commission
Bear Mountain, New York 10911
(845) 786-2701
Executive Director: Joshua Laird

Project Title:
CAMP JUNIOR ON LAKE TIORATI -
PHASE 3

Project Location:
HARRIMAN STATE PARK

Key Plan

REVISIONS

Rev No	Description	Date

Drawn By:

JJS

Design By:

JJS

Checked By:

NCH

Approved By:

NCH

Date:

3/16/23

Sheet Title:

BATHHOUSE
#231 & #322
LIGHTING
PLANS

Bid Documents

Project Number:

21059.23

Seal and Signature



Drawing Number:

E102

Sheet: