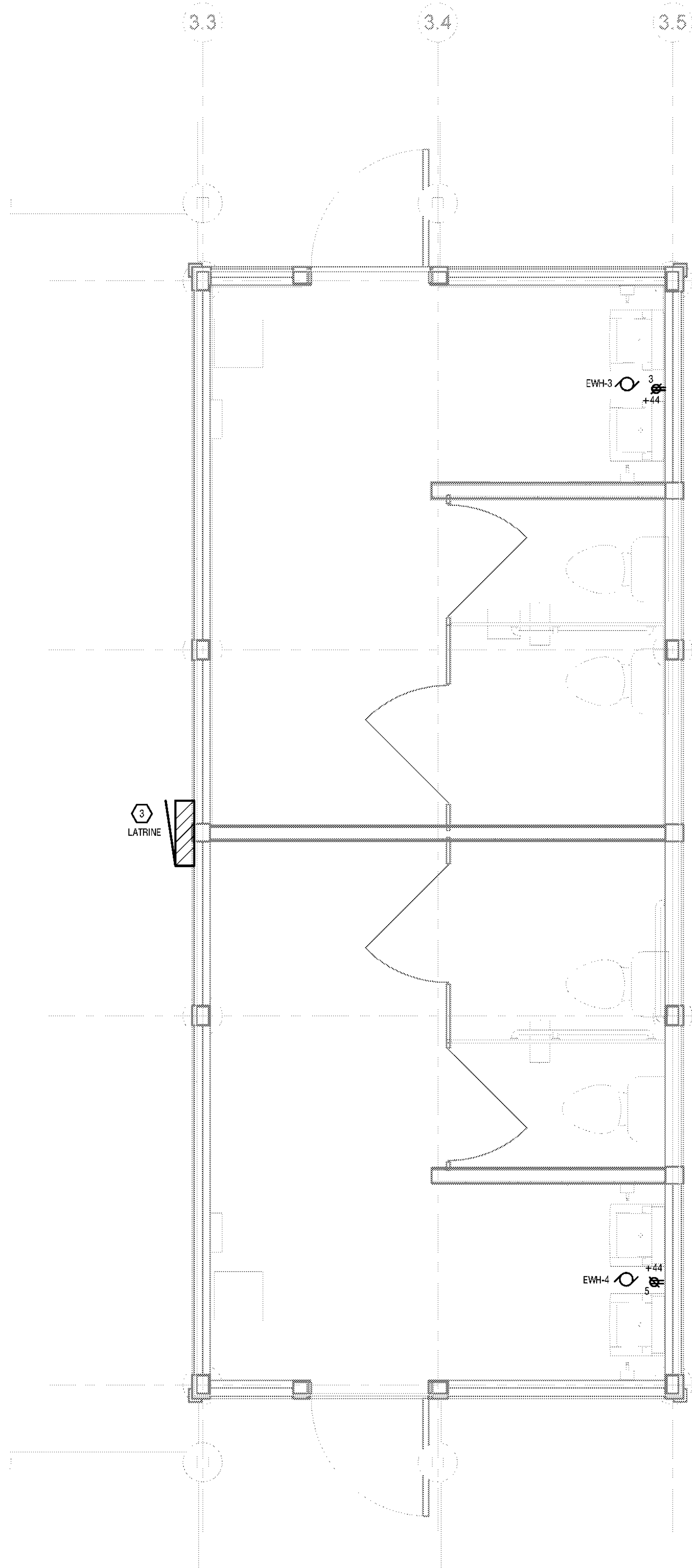
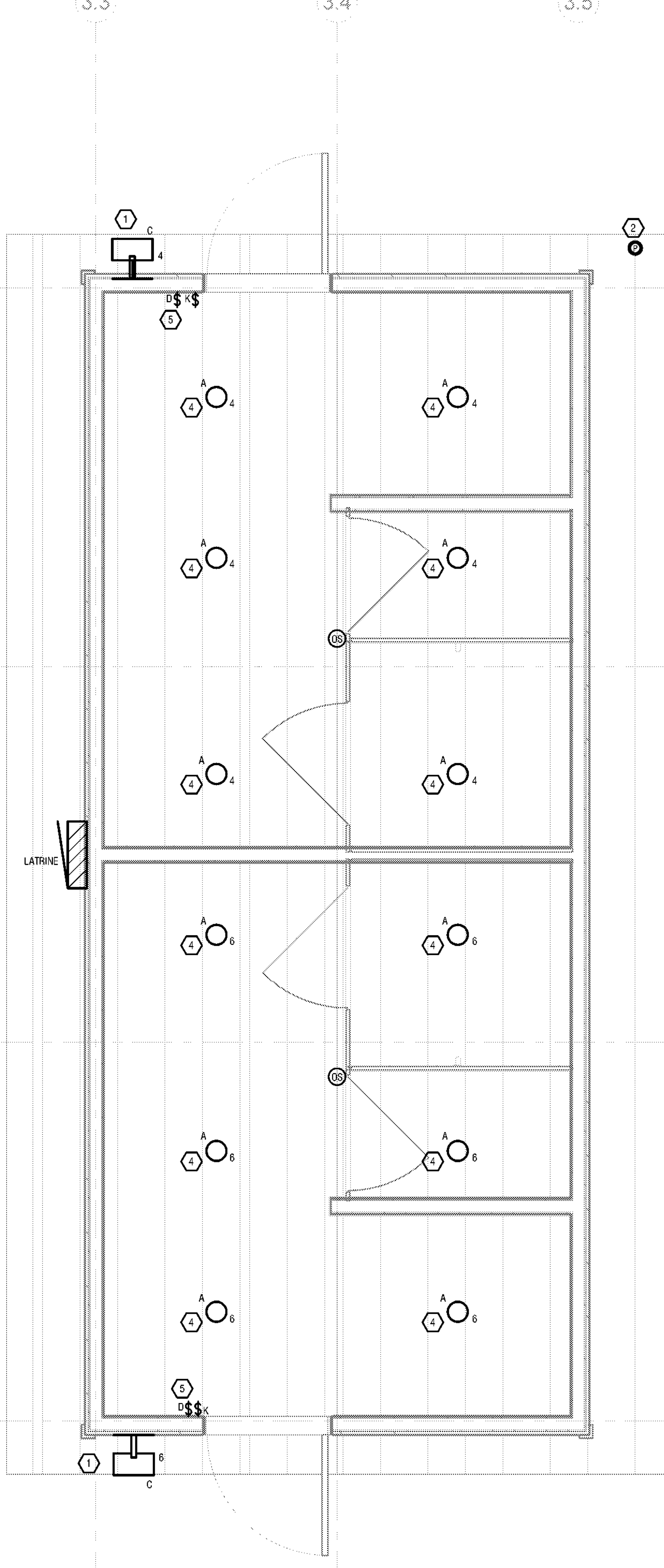


3/30/2023 8:46:12 AM



1 LATRINE #427 POWER PLAN
E103 1/2" = 1'-0"



2 LATRINE #427 LIGHTING PLAN
E103 1/2" = 1'-0"

DRAWING NOTES:

- A. CIRCUIT RECEPTACLES TO 20A/1P CIRCUIT BREAKER IN LATRINE PANEL USING 2#12, 1#12G IN 1/2", CIRCUIT NUMBER AS INDICATED.
- B. CIRCUIT LIGHTING FIXTURES TO 20A/1P CIRCUIT BREAKER IN BATHHOUSE PANEL USING 2#12, 1#12G IN 1/2", CIRCUIT NUMBER AS INDICATED.

KEYED NOTES:

- 1 MOUNT FIXTURE AT 7'1" ABOVE FINISH FLOOR. FIXTURE SHALL BE CONTROLLED BY ROOF MOUNTED PHOTOCELL.
- 2 MOUNT PHOTOCELL TO THE SOFFIT FACING NORTH.
- 3 MOUNT PANELBOARD AT 4'8" ABOVE FINISH GRADE TO THE TOP OF TRIM.
- 4 MOUNT FIXTURE TO BLOCKING BETWEEN RAFTERS/TRUSS (BLOCKING BY GC).
- 5 MOUNT DIMMER SWITCH 6'2" ABOVE FINISH FLOOR AND ABOVE KEYED SWITCH.

New York State
Parks, Recreation and
Historic Preservation

Governor Kathy Hochul
Commissioner Erik Killeseid

IT IS A VIOLATION OF STATE EDUCATION LAW FOR ANY PERSON, UNLESS UNDER THE DIRECTION OF A LICENSED ARCHITECT/ENGINEER, TO ALTER THIS DOCUMENT IN ANYWAY. ALTERATIONS MUST HAVE THE SEAL AFFIXED ALONG WITH A DESCRIPTION OF THE ALTERATIONS, DATE AND ARCHITECTS/ENGINEERS SIGNATURE. COPYRIGHT © 2023

ARCHITECT:
Saratoga Associates
21 Congress Street, Suite 201
Saratoga Springs, NY 12866

SARATOGA ASSOCIATES
Landscape Architects, Architects
Engineers, and Planners, P.C.

SURVEYOR/STRUCTURAL/MEP ENGINEER:
LaBella Associates
300 State Street, Suite 201
Rochester, NY 14614

LaBella

Certificate of Authorization Number:
Professional Engineering: 015281
Last Surveying: 017975
Geological: 018750

Palisades Region
Palisades Interstate Park Commission
Bear Mountain, New York 10911
(845) 786-2701
Executive Director: Joshua Laird

Project Title:
CAMP JUNIOR ON LAKE TIORATI -
PHASE 3

Project Location:
HARRIMAN STATE PARK

Key Plan

REVISIONS		
Rev No	Description	Date

Drawn By:
JJS

Design By:
JJS

Checked By:
NCH

Approved By:
NCH

Date:
3/16/23

Seal and Signature

Sheet Title:
LATRINE #427
POWER &
LIGHTING PLAN

Bid Documents

Project Number:
21059.23

Drawing Number:

E103

Sheet: