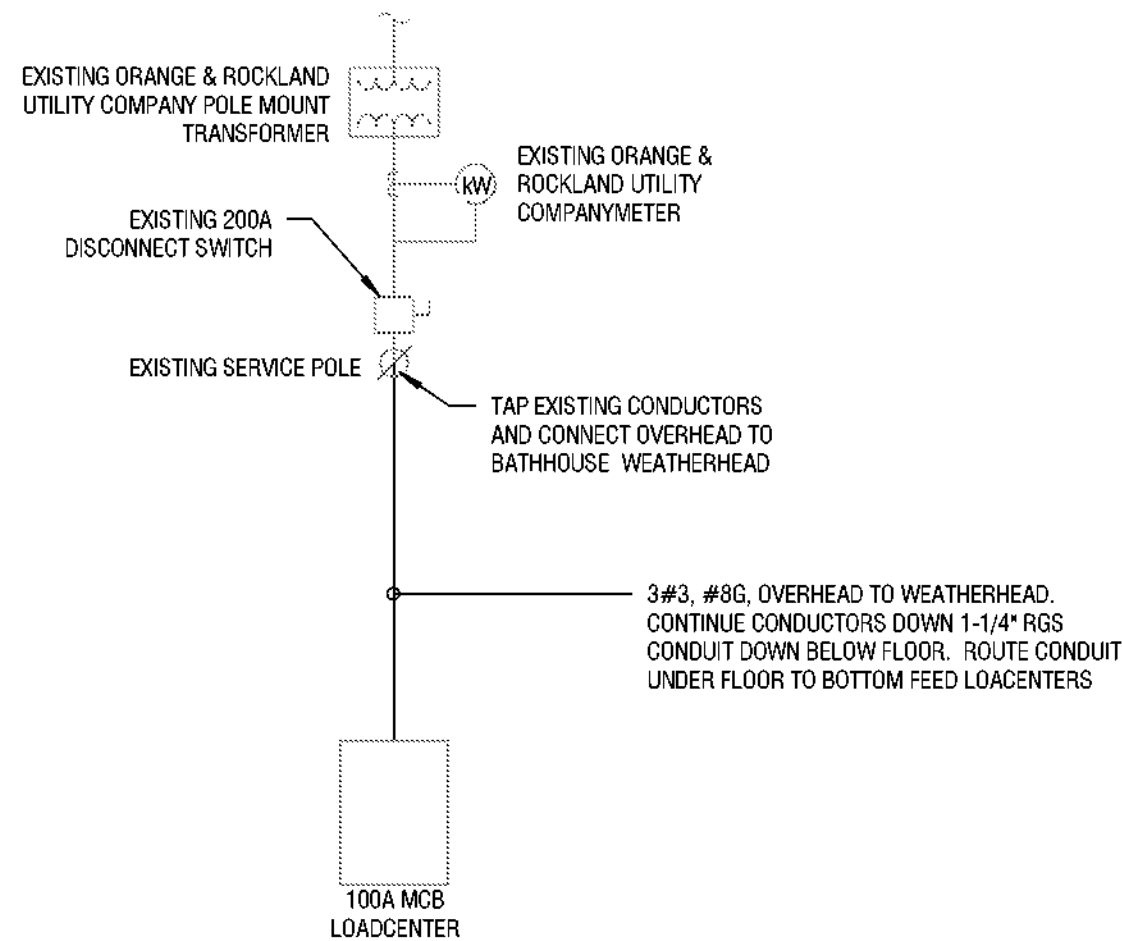
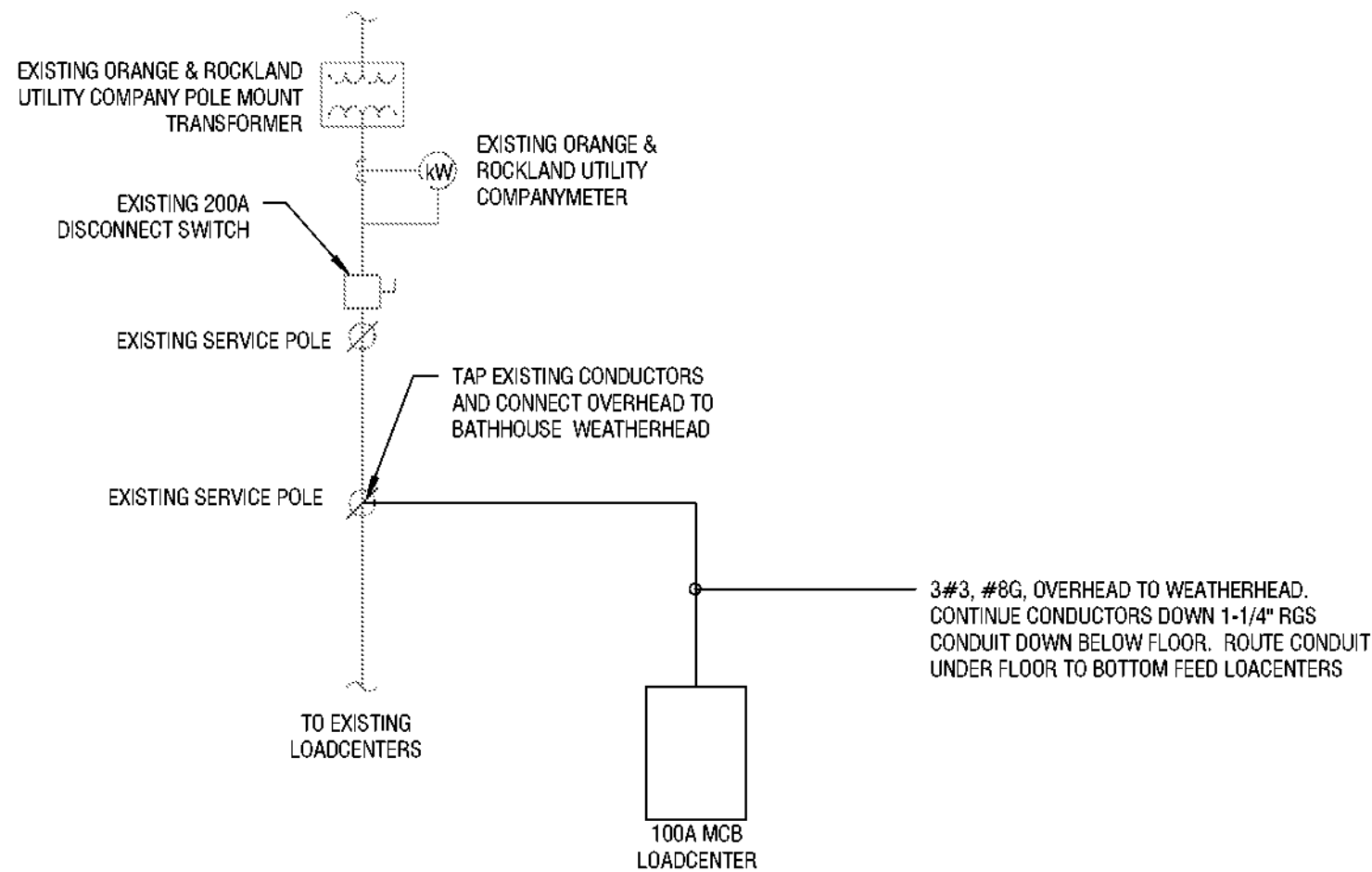


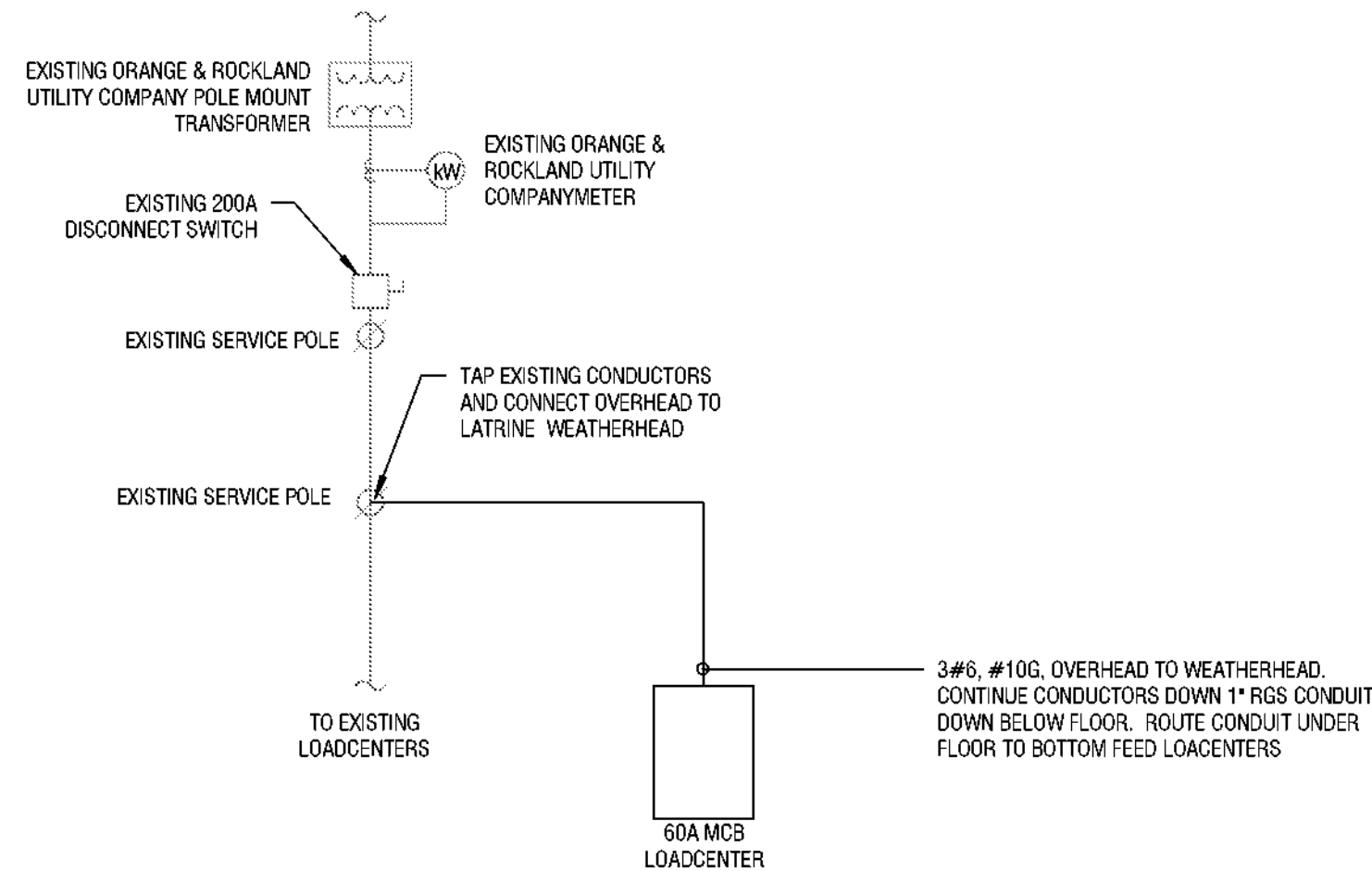
3/30/2023 8:46:14 AM



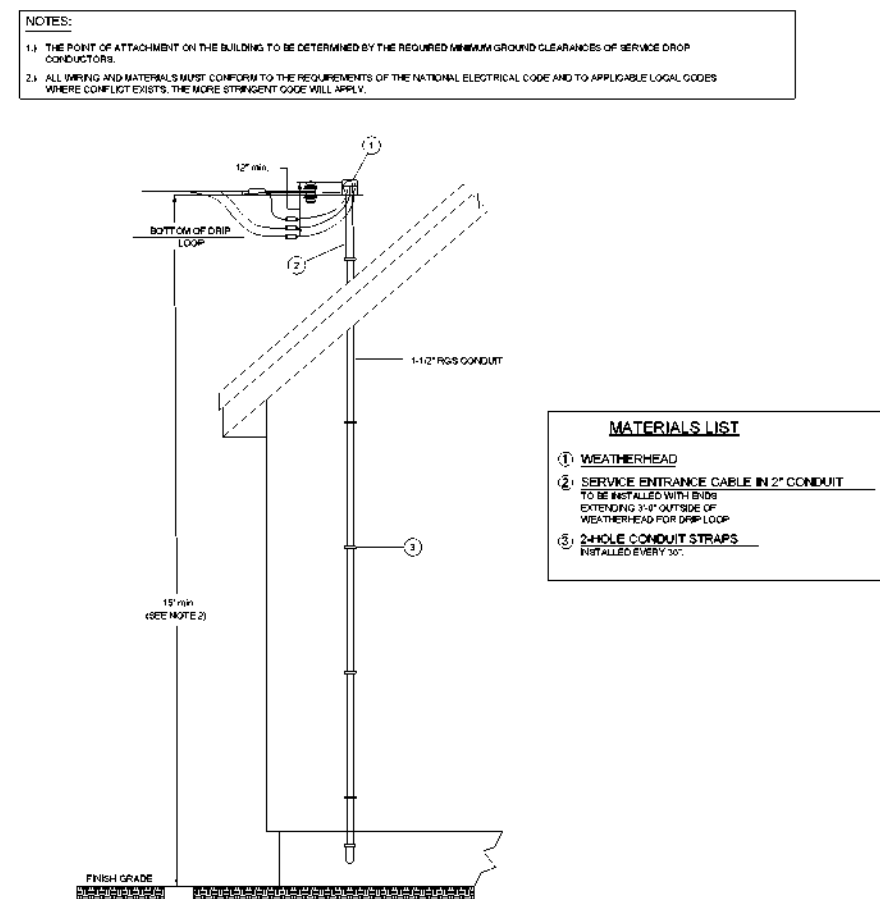
1  
E700  
POWER ONE-LINE DIAGRAM - BATHHOUSE #231  
NOT TO SCALE



2  
E700  
POWER ONE-LINE DIAGRAM -BATHHOUSE #322  
1/8\" = 1'-0"



3  
E700  
POWER ONE-LINE DIAGRAM - LATRINE  
1/8\" = 1'-0"



4  
E700  
OVERHEAD SERVICE ENTRANCE DETAIL  
1/8\" = 1'-0"

#### DESIGNATION: BATHHOUSE

LOCATION: BOYS RESTROOM #231 101

GE POWERMARK GOLD LOAD

CENTER

DISTRIBUTION VOLTAGE: 120/240V SINGLE PHASE

# OF PHASES: 1

# OF WIRES: 3

MOUNTING: RECESSED

ENCLOSURE TYPE: NEMA 3R

FULLY RATED AIC: 10,000

MAIN TYPE: MCB

BUS RATING: 100 A

MCB TRIP: 100 A

MODIFICATIONS:

FED FROM:

SERVICE ENTRANCE LABEL:

OPTIONS:

#### PANELBOARD SCHEDULE NOTATION:

\* PROVIDE GFCI TYPE BREAKER

\*\* REFER TO POWER DISTRIBUTION ONE-LINE DIAGRAM OR EQUIPMENT CONNECTION SCHEDULE(S) FOR TRIP RATING.

\*\*\* COORDINATE CIRCUIT BREAKER RATING WITH SPD MANUFACTURER

CKT	CIRCUIT DESCRIPTION	BKR	POLES	A		B		POLES	BKR	CIRCUIT DESCRIPTION	CKT
1	EF-1	20 A	1	864	455.4			1	20 A	LIGHTING	2
3	RECEPTACLES	20 A	1			360	80	1	20 A	SHOWER LIGHTING*	4
5				6150	180			1	20 A	RECEPTACLES	6
7	EW-1	70 A	2			6150	180	1	20 A	RECEPTACLES	8
9	RP-1	20 A	1	25							10
11											12
13											14
15											16
17											18
19											20
21											22
23											24
TOTAL CONNECTED PHASE LOADS:				7871 VA		6770 VA					
TOTAL CONNECTED PHASE CURRENTS:				64 A		56 A					

LOAD CLASSIFICATION	CONNECTED LOAD	DEMAND FACTOR	ESTIMATED DEMAND LOAD	TOTALS
Lighting	356 VA	100.00%	356 VA	CONNECTED LOAD: 14441 VA ESTIMATED DEMAND LOAD: 17516 VA CONNECTED CURRENT: 60 A ESTIMATED DEMAND CURRENT: 73 A NON-COINCIDENT HEATING/COOLING: 0 A ESTIMATED DEMAND - NC HEAT/COOL: 73 A
Motor	13189 VA	123.31%	18264 VA	
RECEP	900 VA	100.00%	900 VA	

#### DESIGNATION: LATRINE

LOCATION:

FED FROM:

SERVICE ENTRANCE LABEL:

OPTIONS:

GE POWERMARK GOLD LOAD

CENTER

DISTRIBUTION VOLTAGE: 120/240V SINGLE PHASE

# OF PHASES: 1

# OF WIRES: 3

MOUNTING: SURFACE

ENCLOSURE TYPE: NEMA 3R

FULLY RATED AIC: 10,000

MAIN TYPE: MCB

BUS RATING: 100 A

MCB TRIP: 60 A

MODIFICATIONS:

#### PANELBOARD SCHEDULE NOTATION:

\* PROVIDE GFCI TYPE BREAKER

\*\* REFER TO POWER DISTRIBUTION ONE-LINE DIAGRAM OR EQUIPMENT CONNECTION SCHEDULE(S) FOR TRIP RATING.

\*\*\* COORDINATE CIRCUIT BREAKER RATING WITH SPD MANUFACTURER

CKT	CIRCUIT DESCRIPTION	BKR	POLES	A		B		POLES	BKR	CIRCUIT DESCRIPTION	CKT
1	EW-3	15 A	1	1400	1400			1	15 A	EW-2	2
3	RECEPTACLES	20 A	1			180	330.4	1	20 A	LIGHTING	4
5	RECEPTACLES	20 A	1	180	127			1	20 A	LIGHTING	6
7											8
9											10
11											12
13											14
15											16
17											18
19											20
21											22
23											24
TOTAL CONNECTED PHASE LOADS:				3103 VA		510 VA					
TOTAL CONNECTED PHASE CURRENTS:				26 A		4 A					

LOAD CLASSIFICATION	CONNECTED LOAD	DEMAND FACTOR	ESTIMATED DEMAND LOAD	TOTALS
Lighting	279 VA	100.00%	279 VA	CONNECTED LOAD: 3612 VA ESTIMATED DEMAND LOAD: 3962 VA CONNECTED CURRENT: 15 A ESTIMATED DEMAND CURRENT: 17 A NON-COINCIDENT HEATING/COOLING: 0 A ESTIMATED DEMAND - NC HEAT/COOL: 17 A
Motor	2800 VA	112.50%	3150 VA	
RECEP	540 VA	100.00%	540 VA	



Governor Kathy Hochul

New York State  
Parks, Recreation and  
Historic Preservation

Commissioner Erik Kulesseid

IT IS A VIOLATION OF STATE EDUCATION LAW FOR ANY PERSON, UNLESS UNDER THE DIRECTION OF A LICENSED ARCHITECT/ENGINEER, TO ALTER THIS DOCUMENT IN ANYWAY. ALTERATIONS MUST HAVE THE SEAL AFFIXED ALONG WITH A DESCRIPTION OF THE ALTERATIONS, DATE AND ARCHITECTS/ENGINEERS' SIGNATURE. COPYRIGHT © 2023

#### ARCHITECT:

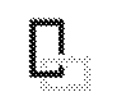
Saratoga Associates  
21 Congress Street, Suite 201  
Saratoga Springs, NY 12866

#### SARATOGA ASSOCIATES

Landscape Architects, Architects  
Engineers, and Planners, P.C.

#### SURVEYOR/STRUCTURAL/ MEP ENGINEER:

LaBella Associates  
300 State Street, Suite 201  
Rochester, NY 14614



Certificate of Authorization Number:  
Professional Engineering: 018281  
Land Surveying: 017975  
Geological: 018750

#### Palisades Region

Palisades Interstate Park Commission  
Bear Mountain, New York 10911  
(845) 786-2701  
Executive Director: Joshua Laird

#### Project Title:

CAMP JUNIOR ON LAKE TIORATI -  
PHASE 3

#### Project Location:

HARRIMAN STATE PARK

#### Key Plan

#### REVISIONS

Rev No	Description	Date

Drawn By:

JJS

Design By:

JJS

Checked By:

NCH

Approved By:

NCH

Date:

3/16/23

Sheet Title:

PARTIAL  
ONE-LINE  
DIAGRAM AND  
SCHEDULES

#### Bid Documents

Project Number:

21059.23

Seal and Signature



Drawing Number:

E700

Sheet: