

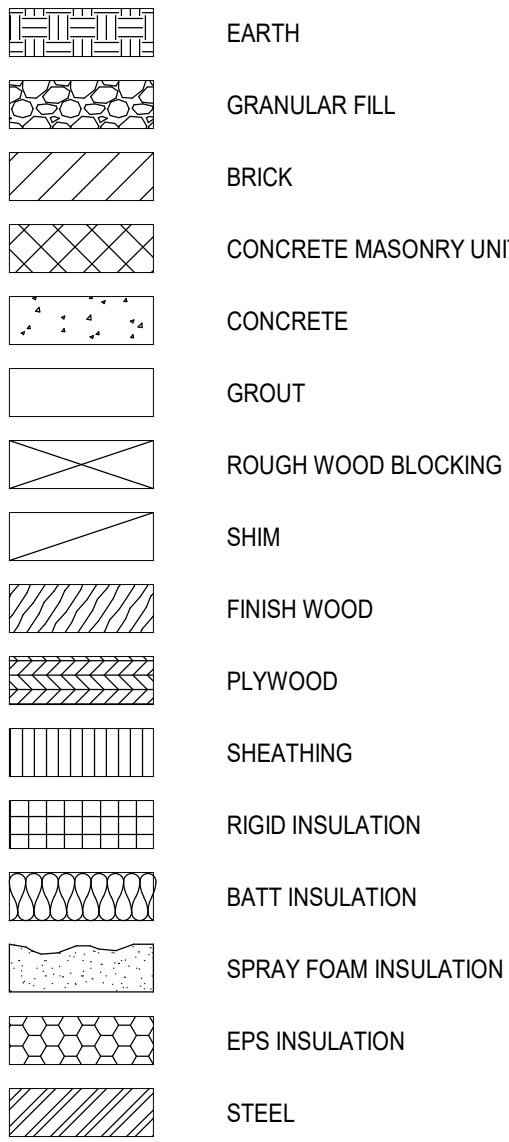
C:\Users\dmiller\Documents\197-2201 - HMS Phase1\_ARCH\_dmlle303.rvt

ABBREVIATIONS

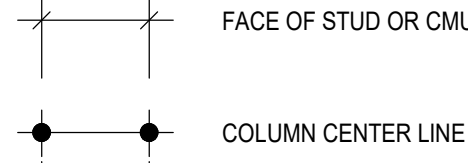
ABBREVIATION	DESCRIPTION
ADD	ADDENDUM
ADMIN	ADMINISTRATIVE
AFF	ABOVE FINISHED FLOOR
ALT	ALTERNATE
APPROX	APPROXIMATE
ARCH	ARCHITECT / ARCHITECTURAL
AV	AUDIO VISUAL
BLDG	BUILDING
BOT OR B1	BOTTOM OF BASEMENT
BSMT	
CJ	CONTROL / CONSTRUCTION JOINT
CL	CENTERLINE
CLG / CLNG	CEILING
CLR	CLEAR
CMU	CONCRETE MASONRY UNIT
COL	COLUMN
CONC	CONCRETE
CONF	CONFERENCE
CONT	CONTINUOUS
COORD	COORDINATE
CORR	CORRIDOR
DEMO	DEMOLITION
DET	DETAIL
DIA	DIAMETER
DN	DOWN
DWG	DRAWING
ED	EDUCATION
EIFS	EXTERIOR INSULATION FINISH SYSTEM
ELECT	ELECTRIC / ELECTRICAL
EPDM	ETHYLENE PROPYLENE DIENE MONOMER
EQ	EQUAL
EQUIP	EQUIPMENT
EXST	EXISTING
EJ	EXPANSION JOINT
EXT	EXTERIOR
FIN	FINISH
FIN FL	FINISH FLOOR
FKT	FIXTURE
FLR	FLOOR
FRT	FIRE-RETARDANT-TREATED MATERIAL
FTG	FOOTING
GA	GAUGE
GAL	GALLON
GALV	GALVANIZED(I)
GC	GENERAL CONTRACT(OR)
GND	GROUND
GWB	GYPSUM WALL BOARD
GWBS	GYPSUM WALL BOARD SOFFIT
HC	HANDICAPPED ACCESSIBLE
HM	HOLLOW METAL
HORIZ	HORIZONTAL
HR	HOUR
HT	HEIGHT
HTG	HEATING
HVAC	HEATING/VENTILATING/AIR CONDITIONING
ID	INSIDE DIMENSION
IN	INCH / INCHES
INT	INTERIOR
JAN	JANITOR
JC	JANITOR'S CLOSET
JST	JOIST
JT	JOINT
LAB	LABORATORY
LB	POUND
LN	LINEAR
LVL	LEVEL
MAN	MANUAL
MAS	MASONRY
MAX	MAXIMUM
MDF	MEDIUM DENSITY FIBERBOARD
MECH	MECHANICAL
MEZZ	MEZZANINE
MFR	MANUFACTURE(R)
MD	MIDDLE
MIN	MINIMUM
MISC	MISCELLANEOUS
MO	MASONRY OPENING
MTL	METAL
NA	NOT APPLICABLE
NIC	NOT IN CONTRACT
NOM	NOMINAL
NTS	NOT TO SCALE
OA	OVERALL
OC	ON CENTER
OD	OUTSIDE DIAMETER
OHD	OVERHEAD
OFT	OPTIONAL
OZ	OUNCE
PERIM	PERIMETER
PLAM	PLASTIC LAMINATE
PLBG	PLUMBING
PLAS	PLASTER
PLYWD	PLYWOOD
PNL	PANEL
PNT	PAINT(ED)
POLYSO	POLYISOCYANURATE
PPT	PRESSURE PRESERVATIVE TREATED
PR	PAIR
PREP	PREPARATORY
PTN	PARTITION
PVC	POLYVINYL CHLORIDE
RAD	RADIUS
RB	RUBBER / RUBBER WALL BASE
REQD	REQUIRED
RM	ROOM
RND	ROUND
RO	ROUGH OPENING
SCH	SCHEDULED
SECT	SECTION
SF	SQUARE FEET
SIM	SIMILAR
SPEC	SPECIFICATION
SQ	SQUARE
SS	STAINLESS STEEL
STC	SOUND TRANSMISSION CLASS
STD	STANDARD
STL	STEEL
STOR	STORAGE
STRUCT	STRUCTURAL / STRUCTURE
SUSP	SUSPENDED
SAC	SUSPENDED ACOUSTICAL CEILING
T&B	TOP AND BOTTOM
T&G	TONGUE AND GROOVE
TECH	TECHNOLOGY
TEMP	TEMPERARY
TMPO	TEMPERED
TOM	TOP OF MASONRY
TOS	TOP OF STEEL
TYP	TYPICAL
UL	UNDERWRITERS LABORATORY
UNO	UNLESS NOTED OTHERWISE
VERT	VERTICAL
VEST	VESTIBULE
VF	VERIFY IN FIELD
W	WITH
W/O	WITHOUT
WD	WOOD
WPT	WOOD PRESERVED-TREATED MATERIAL
WT	WEIGHT
YD	YARD

ARCHITECTURAL LEGEND

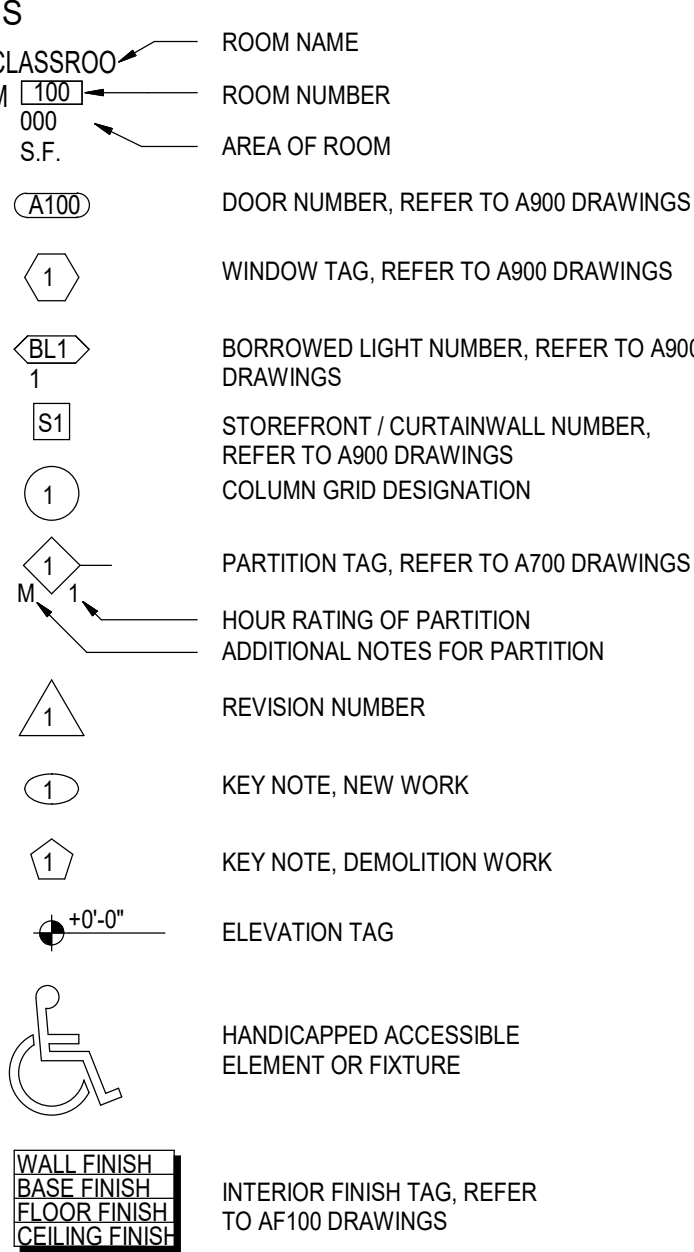
MATERIAL INDICATIONS



DIMENSIONING CONVENTIONS

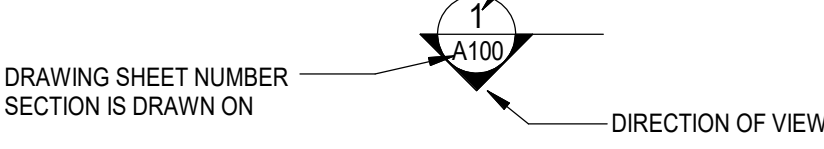


SYMBOL

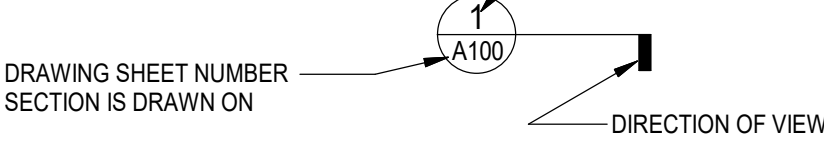


DETAIL INDICATOR LEGEND

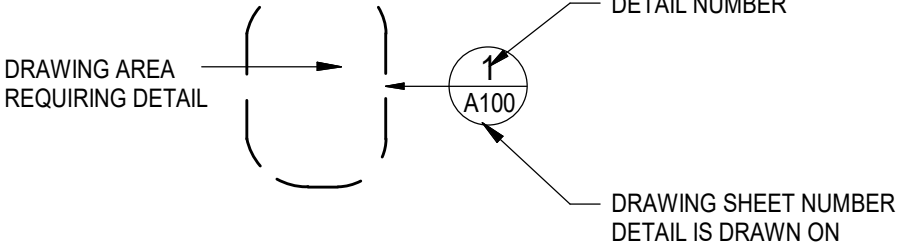
SECTION INDICATOR



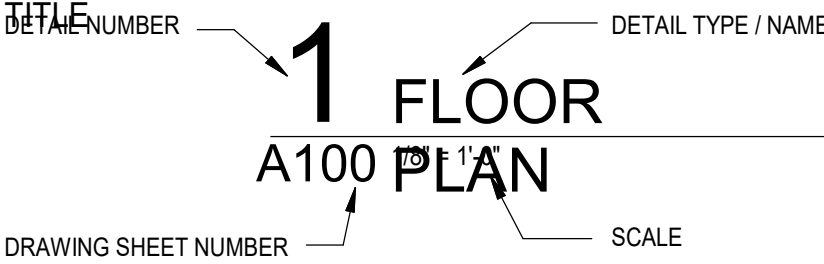
DETAIL INDICATOR (SECTION)



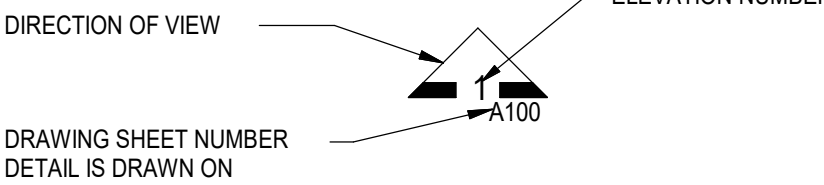
ENLARGED DETAIL INDICATOR



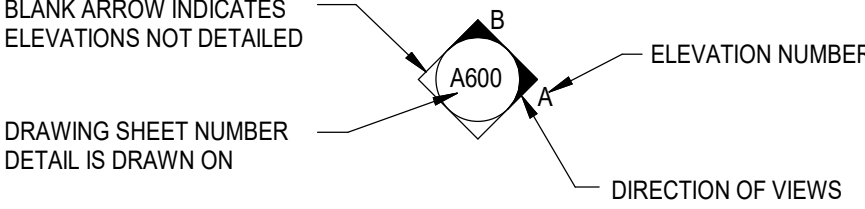
DETAIL



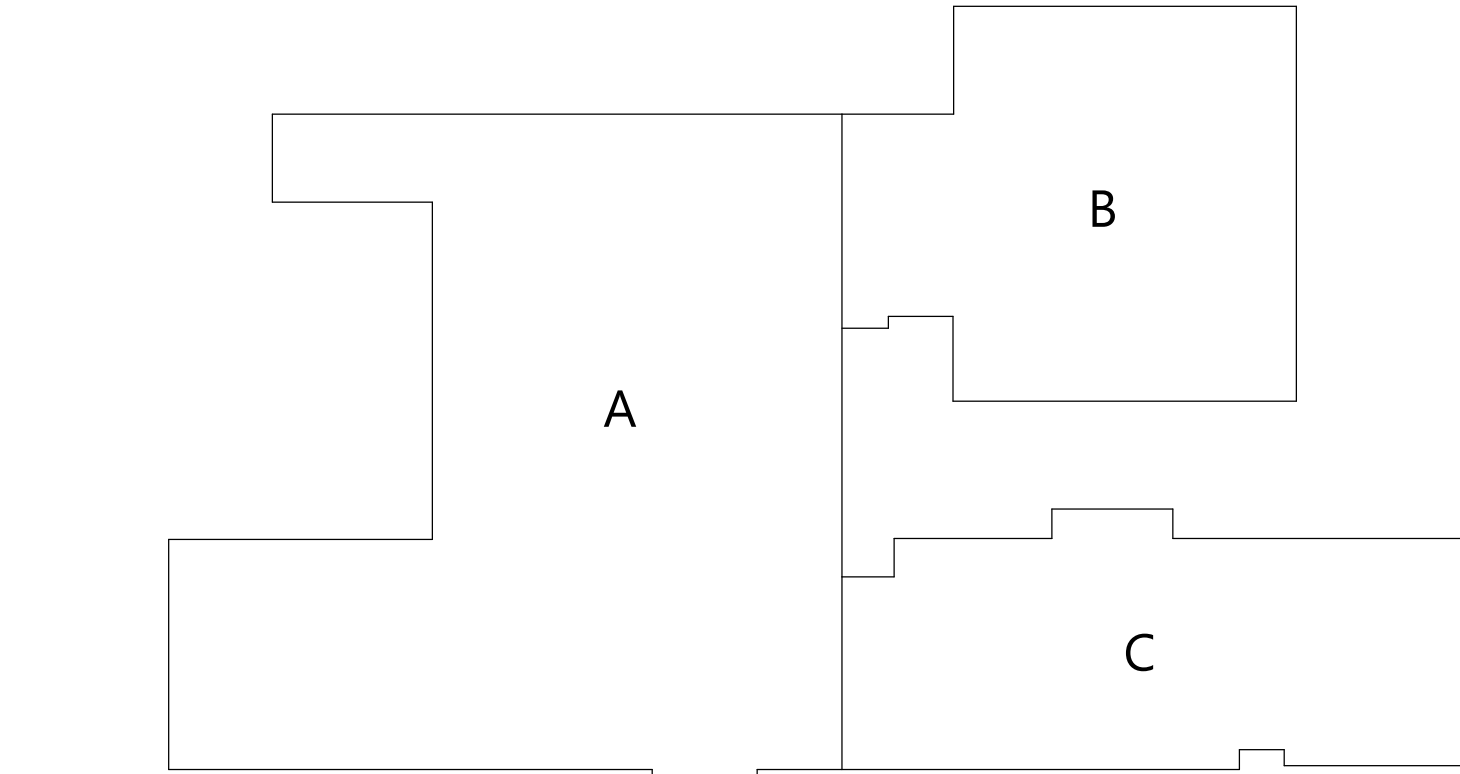
EXTERIOR ELEVATION INDICATOR



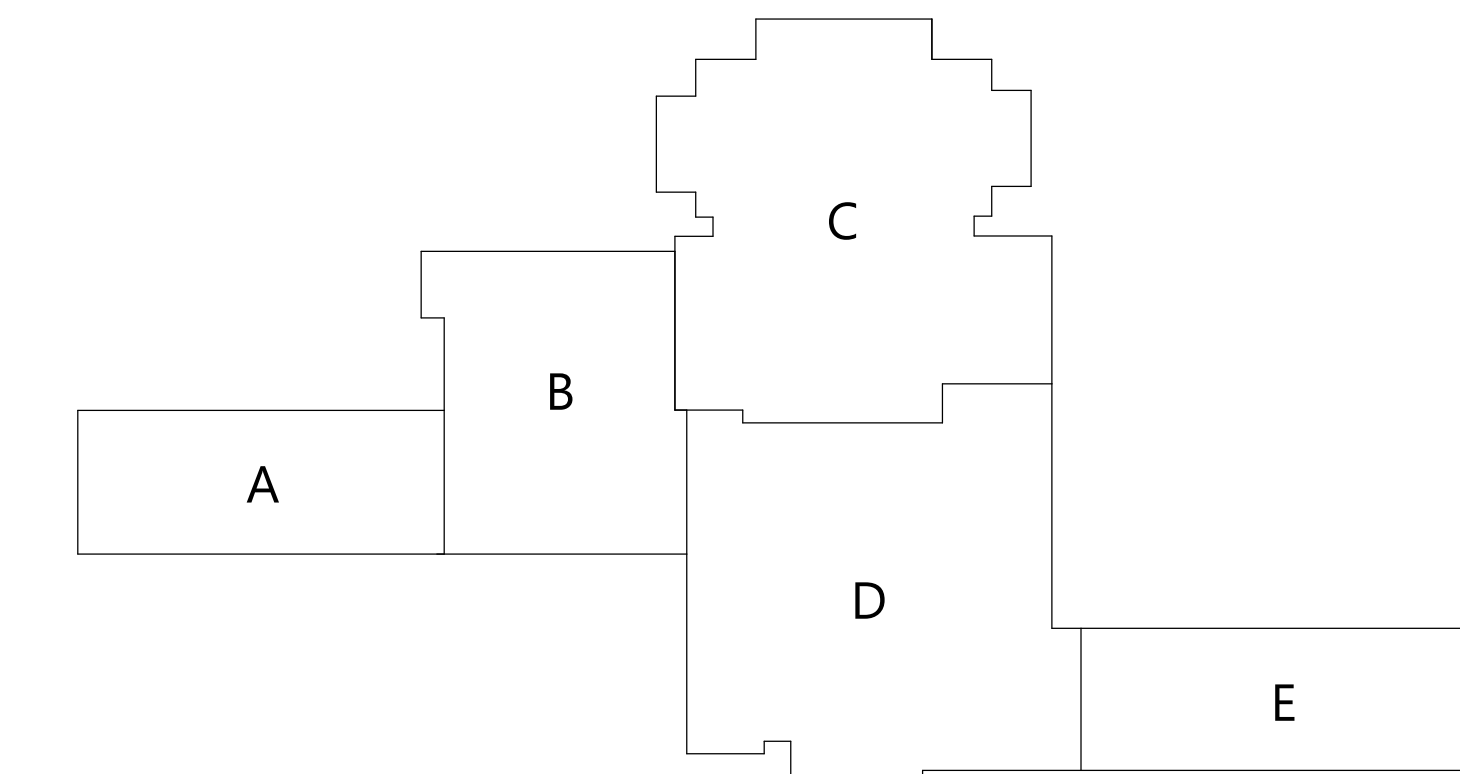
INTERIOR ELEVATION INDICATOR



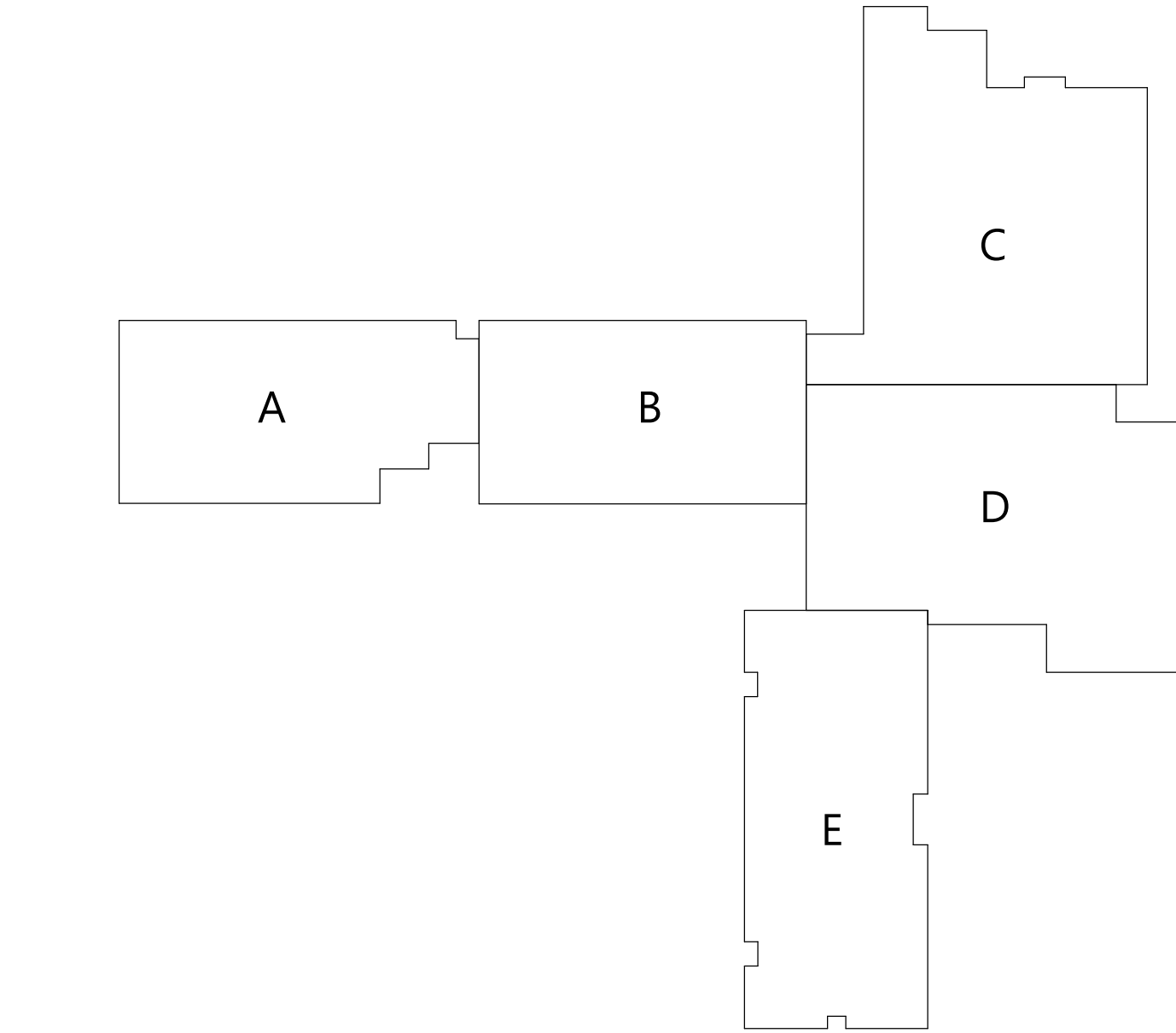
BUILDING KEYPLANS



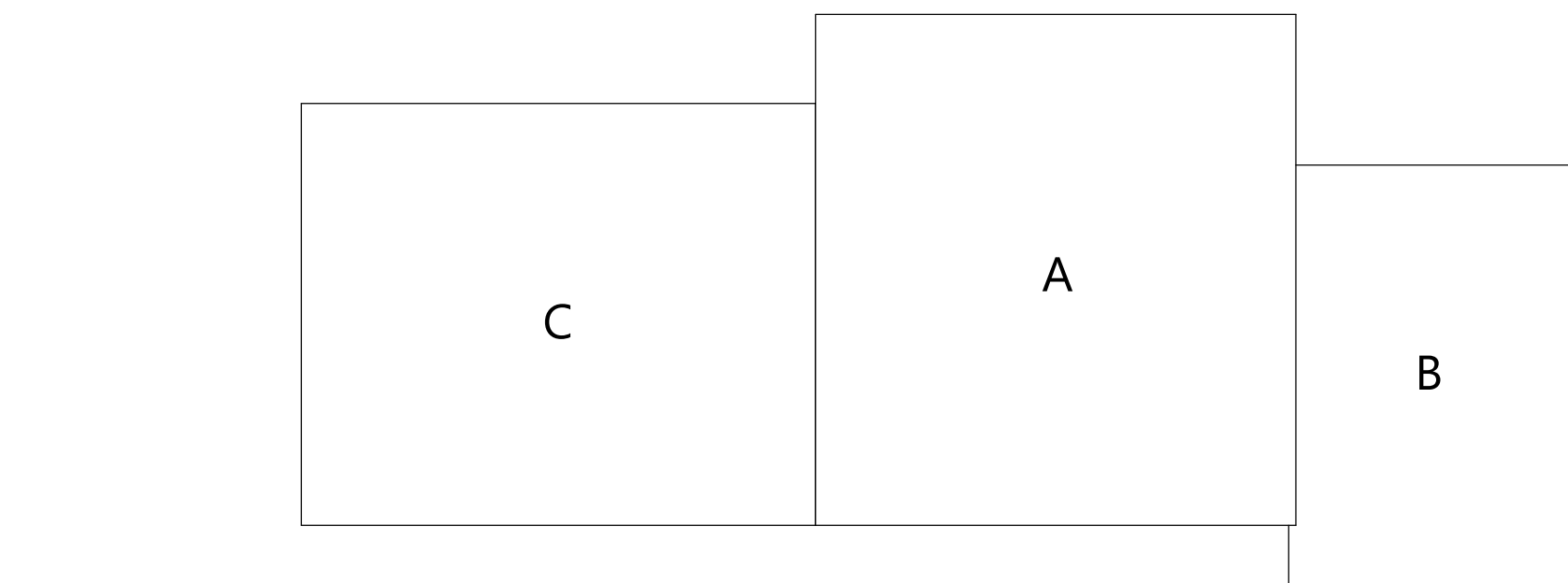
HIGHLAND MIDDLE SCHOOL (HMS)



HIGHLAND HIGH SCHOOL (HHS)

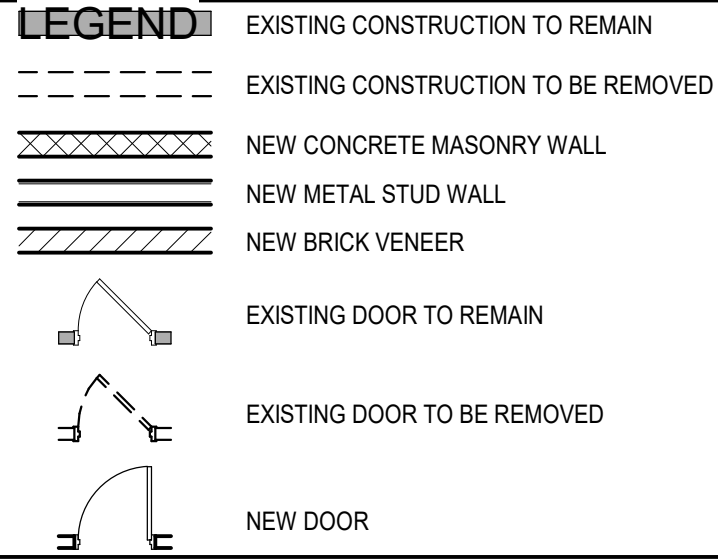


HIGHLAND ELEMENTARY SCHOOL (HES)

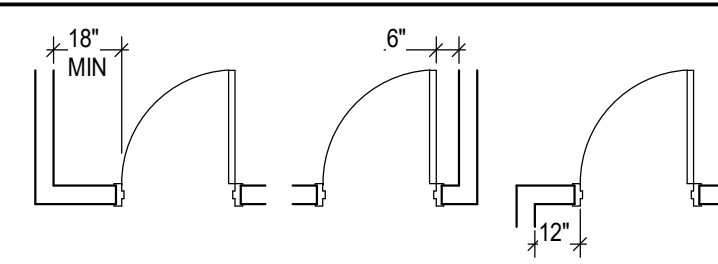


HIGHLAND BUS GARAGE (HBG)

PLAN GRAPHICS



FINISHED DOOR OPENINGS SHALL BE LOCATED AS INDICATED BELOW UNO. DIMENSIONS SHOWN ARE CLEAR DIMENSIONS FROM INSIDE OF FRAME TO WALL FINISH.



GENERAL NOTES

- DIMENSIONS ARE GIVEN THUS (UNLESS NOTED OTHERWISE)  
A. TO FACE OF MASONRY WALL  
B. TO FACE OF METAL STUD  
C. TO COLUMN CENTERLINES  
D. TO FINISH FACE OF SOFFIT OR CEILING  
E. FACE OF EXISTING CONSTRUCTION
- DO NOT SCALE DRAWINGS. IF A DIMENSION IS NOT SHOWN, BRING IT TO THE ATTENTION OF THE ARCHITECT FOR VERIFICATION BEFORE PROCEEDING WITH THE ASSOCIATED WORK
- WALLS ON COLUMN LINES ARE CENTERED UNO
- ALL DIMENSIONS RELATED TO EXISTING CONDITIONS SHALL BE VERIFIED IN FIELD. CONTRACTOR TO NOTIFY ARCHITECT OF ANY DISCREPANCIES PRIOR TO BEGINNING WORK IN THAT AREA
- LAYOUT OF TOILET FIXTURES AND ACCESSIBILITY CLEARANCES ARE SHOWN AS CLEAR DIMENSION. CONTRACTORS ARE REQUIRED TO COORDINATE LAYOUTS OF PARTITIONS, UTILITY CONNECTIONS, AND THICKNESS OF FINISHES TO ALLOW THESE CLEAR DIMENSIONS
- ALL ELEVATIONS (X-X') ARE REFERENCE FROM FIRST FLOOR ELEVATION
- ALL WOOD BLOCKING WITHIN ROOFING SYSTEM AND WITHIN 2'-0" OF GRADE SHALL BE PRESSURE TREATED
- ALL FLOOR PENETRATIONS SHALL BE SMOKE-SEALED AND/OR FIRE STOPPED. COORDINATE WITH HF DWGS FOR SMOKE / FIRE DAMPER REQUIREMENTS
- FOR INTERIOR PARTITION TYPES, REFER TO DRAWING A701
- FOR DOOR SCHEDULE, REFER TO DRAWING A901
- FOR FINISH SCHEDULE, REFER TO DRAWING AF901
- ALL EXPOSED SURFACES OF NEW PARTITIONS AND SOFFITS ARE TO BE FINISHED
- PROVIDE PATCH TO MATCH EXISTING FINISHES AT ALL REMOVAL AREAS, COORDINATE WITH DEMOLITION DRAWINGS AND SPECIFICATIONS
- FOR ALL MATERIAL TESTING, REFER TO SPECIFICATION DIVISION 000220
- ALL CONSTRUCTION SHOWN IS NEW UNLESS NOTED OTHERWISE

19 Front St., Newburgh, New York 12550-7601  
845.561.3379 www.csarch.com

Consultant

HIGHLAND CENTRAL SCHOOL DISTRICT  
HIGHLAND MIDDLE SCHOOL  
2022 CAPITAL IMPROVEMENT PROJECT - PHASE 1

Project Title



Expiration Date: 02/28/2025

REV	DATE	DESCRIPTION

Drawn By:	CSA
Checked By:	CSA
Proj. #:	62-08-03-04-0-001-010
CSArch Proj. #:	197-2201.01
Issued for Bid:	08/18/23

Sheet Title

SYMBOLS,  
ABBREVIATIONS,  
KEY PLANS,  
AND MISC.

Sheet No.

HMS  
G001

CONSTRUCTION DOCUMENTS