

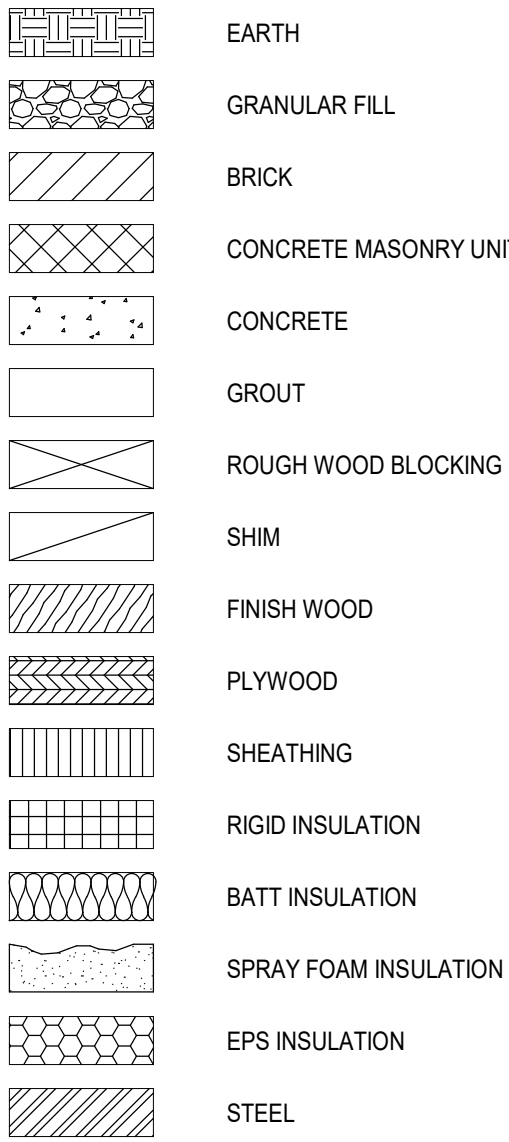
C:\Users\dmliller\Documents\197-2201 - HES Phase1\_ARCH\_dmliller03.rvt

ABBREVIATIONS

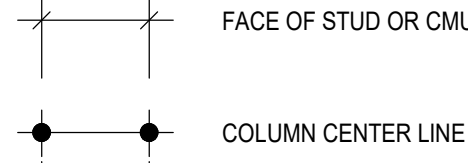
| ABBREVIATION | DESCRIPTION                          |
|--------------|--------------------------------------|
| ADD          | ADDENDUM                             |
| ADMIN        | ADMINISTRATIVE                       |
| AFF          | ABOVE FINISHED FLOOR                 |
| ALT          | ALTERNATE                            |
| APPROX       | APPROXIMATE                          |
| ARCH         | ARCHITECT / ARCHITECTURAL            |
| AV           | AUDIO VISUAL                         |
| BLDG         | BUILDING                             |
| BOT OR B1    | BOTTOM OF BASEMENT                   |
| BSMT         |                                      |
| CJ           | CONTROL / CONSTRUCTION JOINT         |
| CL           | CENTERLINE                           |
| CLG / CLNG   | CEILING                              |
| CLR          | CLEAR                                |
| CMU          | CONCRETE MASONRY UNIT                |
| COL          | COLUMN                               |
| CONC         | CONCRETE                             |
| CONF         | CONFERENCE                           |
| CONT         | CONTINUOUS                           |
| COORD        | COORDINATE                           |
| CORR         | CORRIDOR                             |
| DEMO         | DEMOLITION                           |
| DET          | DETAIL                               |
| DIA          | DIAMETER                             |
| DN           | DOWN                                 |
| DWG          | DRAWING                              |
| ED           | EDUCATION                            |
| EIFS         | EXTERIOR INSULATION FINISH SYSTEM    |
| ELECT        | ELECTRIC / ELECTRICAL                |
| EPDM         | ETHYLENE PROPYLENE DIENE MONOMER     |
| EQ           | EQUAL                                |
| EQUIP        | EQUIPMENT                            |
| EXST         | EXISTING                             |
| EJ           | EXPANSION JOINT                      |
| EXT          | EXTERIOR                             |
| FIN          | FINISH                               |
| FIN FL       | FINISH FLOOR                         |
| FKT          | FIXTURE                              |
| FLR          | FLOOR                                |
| FRT          | FIRE-RETARDANT-TREATED MATERIAL      |
| FTG          | FOOTING                              |
| GA           | GAUGE                                |
| GAL          | GALLON                               |
| GALV         | GALVANIZED(D)                        |
| GC           | GENERAL CONTRACT(OR)                 |
| GND          | GROUND                               |
| GWB          | GYPSUM WALL BOARD                    |
| GWBS         | GYPSUM WALL BOARD SOFFIT             |
| HC           | HANDICAPPED ACCESSIBLE               |
| HM           | HOLLOW METAL                         |
| HORIZ        | HORIZONTAL                           |
| HR           | HOUR                                 |
| HT           | HEIGHT                               |
| HTG          | HEATING                              |
| HVAC         | HEATING/VENTILATING/AIR CONDITIONING |
| ID           | INSIDE DIMENSION                     |
| IN           | INCH / INCHES                        |
| INT          | INTERIOR                             |
| JAN          | JANITOR                              |
| JC           | JANITOR'S CLOSET                     |
| JST          | JOIST                                |
| JT           | JOINT                                |
| LAB          | LABORATORY                           |
| LB           | POUND                                |
| LN           | LINEAR                               |
| LVL          | LEVEL                                |
| MAN          | MANUAL                               |
| MAS          | MASONRY                              |
| MAX          | MAXIMUM                              |
| MDF          | MEDIUM DENSITY FIBERBOARD            |
| MECH         | MECHANICAL                           |
| MEZZ         | MEZZANINE                            |
| MFR          | MANUFACTURE(R)                       |
| MD           | MIDDLE                               |
| MIN          | MINIMUM                              |
| MISC         | MISCELLANEOUS                        |
| MO           | MASONRY OPENING                      |
| MTL          | METAL                                |
| NA           | NOT APPLICABLE                       |
| NIC          | NOT IN CONTRACT                      |
| NOM          | NOMINAL                              |
| NTS          | NOT TO SCALE                         |
| OA           | OVERALL                              |
| OC           | ON CENTER                            |
| OD           | OUTSIDE DIAMETER                     |
| OHHD         | OVERHEAD                             |
| OFT          | OPTIONAL                             |
| OZ           | OUNCE                                |
| PERIM        | PERIMETER                            |
| PLAM         | PLASTIC LAMINATE                     |
| PLBG         | PLUMBING                             |
| PLAS         | PLASTER                              |
| PLYWD        | PLYWOOD                              |
| PNL          | PANEL                                |
| PNT          | PAINT(ED)                            |
| POLYSO       | POLYSOCYANURATE                      |
| PPT          | PRESSURE PRESERVATIVE TREATED        |
| PR           | PAIR                                 |
| PREP         | PREPARATORY                          |
| PTN          | PARTITION                            |
| PVC          | POLYVINYL CHLORIDE                   |
| RAD          | RADIUS                               |
| RB           | RUBBER / RUBBER WALL BASE            |
| REQD         | REQUIRED                             |
| RM           | ROOM                                 |
| RND          | ROUND                                |
| RO           | ROUGH OPENING                        |
| SCH          | SCHEDULED                            |
| SECT         | SECTION                              |
| SF           | SQUARE FEET                          |
| SIM          | SIMILAR                              |
| SPEC         | SPECIFICATION                        |
| SQ           | SQUARE                               |
| SS           | STAINLESS STEEL                      |
| STC          | SOUND TRANSMISSION CLASS             |
| STD          | STANDARD                             |
| STL          | STEEL                                |
| STOR         | STORAGE                              |
| STRUCT       | STRUCTURAL / STRUCTURE               |
| SUSP         | SUSPENDED                            |
| SAC          | SUSPENDED ACOUSTICAL CEILING         |
| T&B          | TOP AND BOTTOM                       |
| T&G          | TONGUE AND GROOVE                    |
| TECH         | TECHNOLOGY                           |
| TEMP         | TEMPERARY                            |
| TMPO         | TEMPERED                             |
| TOM          | TOP OF MASONRY                       |
| TOS          | TOP OF STEEL                         |
| TYP          | TYPICAL                              |
| UL           | UNDERWRITERS LABORATORY              |
| UNO          | UNLESS NOTED OTHERWISE               |
| VERT         | VERTICAL                             |
| VEST         | VESTIBULE                            |
| VF           | VERIFY IN FIELD                      |
| W            | WITH                                 |
| W/O          | WITHOUT                              |
| WD           | WOOD                                 |
| WPT          | WOOD PRESERVED-TREATED MATERIAL      |
| WT           | WEIGHT                               |
| YD           | YARD                                 |

ARCHITECTURAL LEGEND

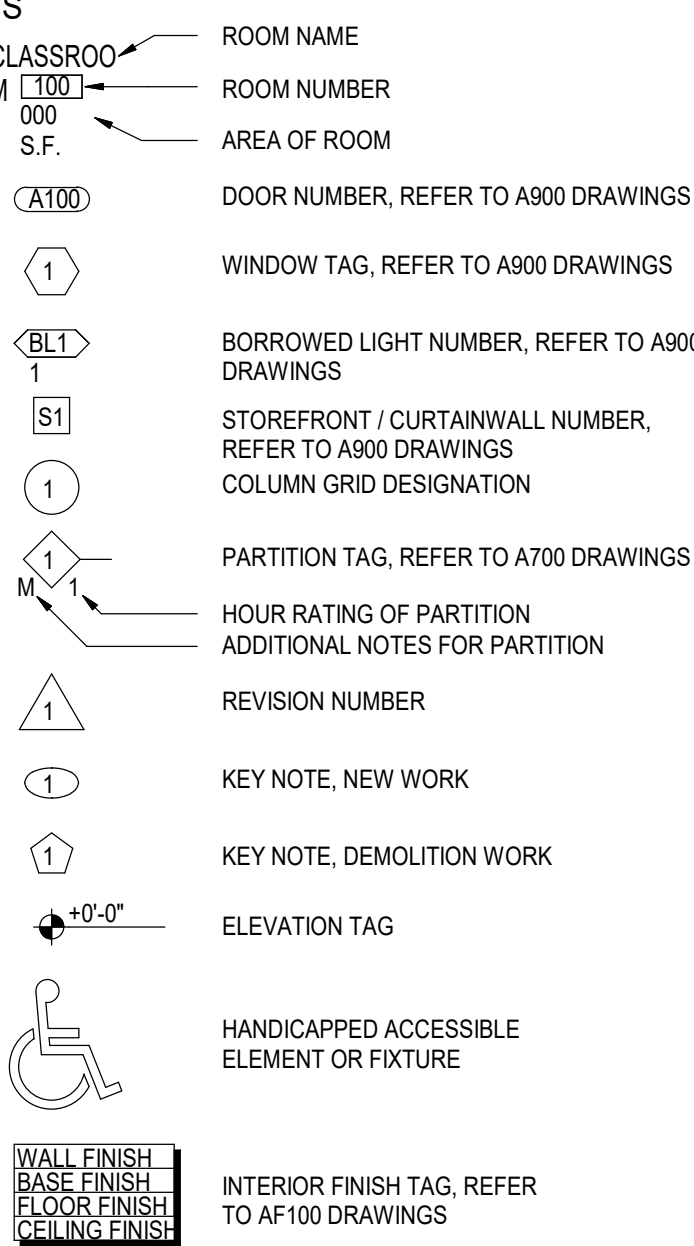
MATERIAL INDICATIONS



DIMENSIONING CONVENTIONS



SYMBOL



DETAIL INDICATOR LEGEND

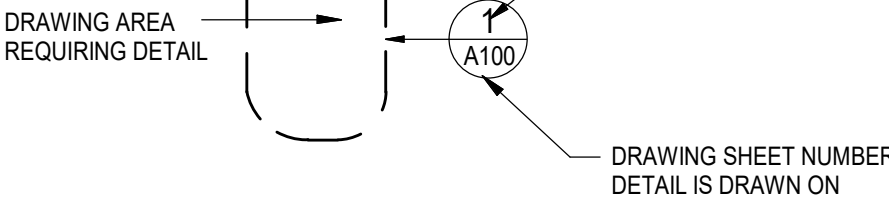
SECTION INDICATOR



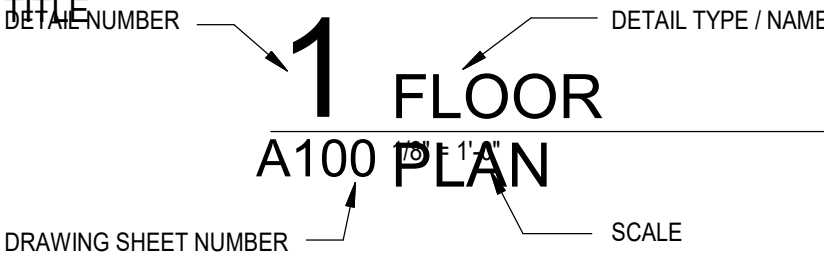
DETAIL INDICATOR (SECTION)



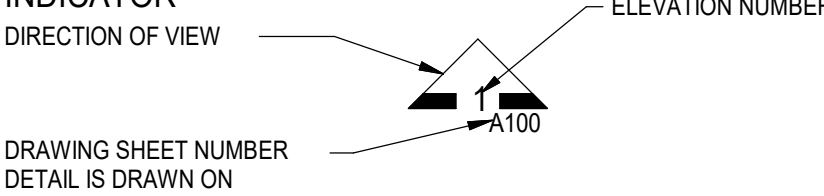
ENLARGED DETAIL INDICATOR



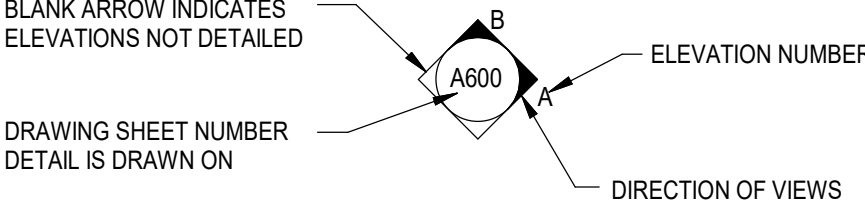
DETAIL



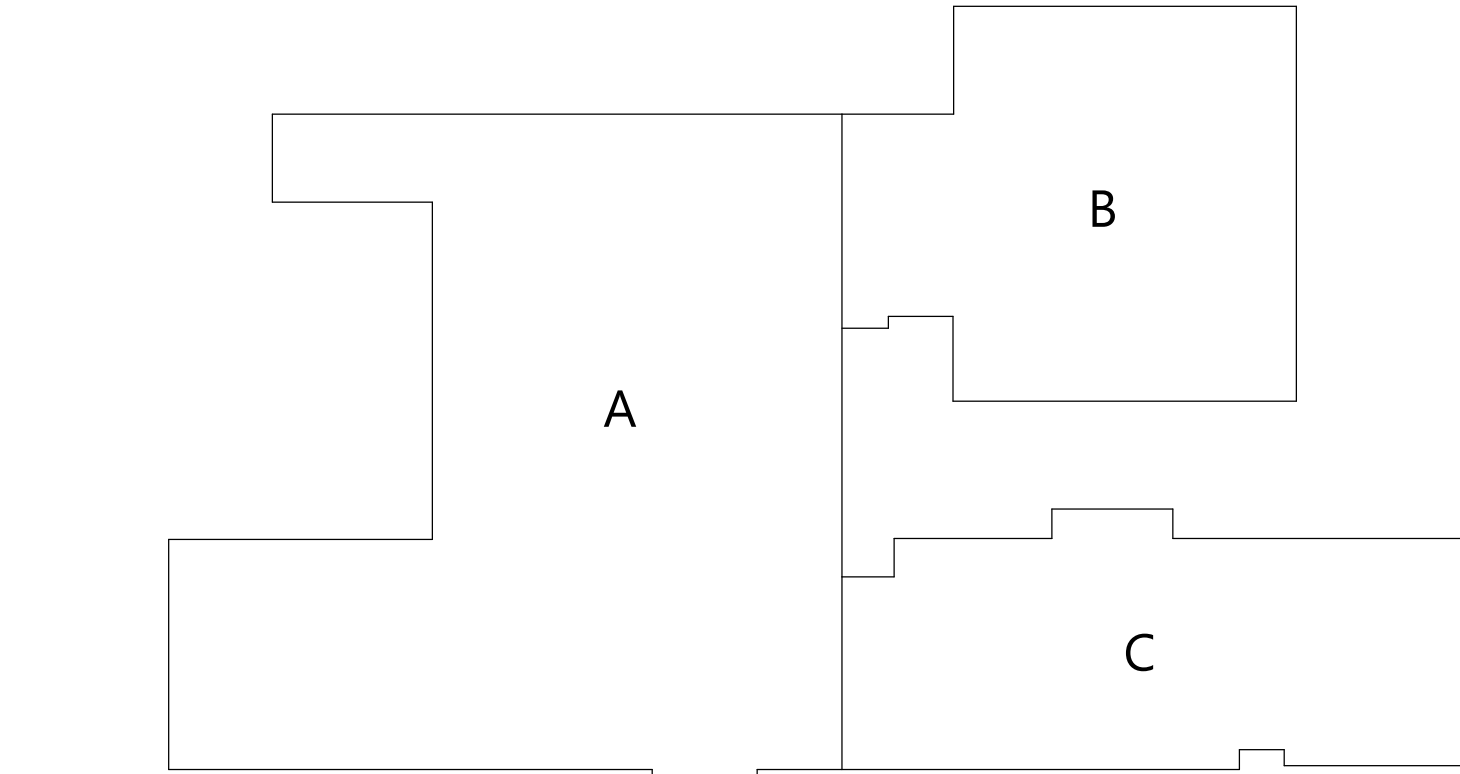
EXTERIOR ELEVATION INDICATOR



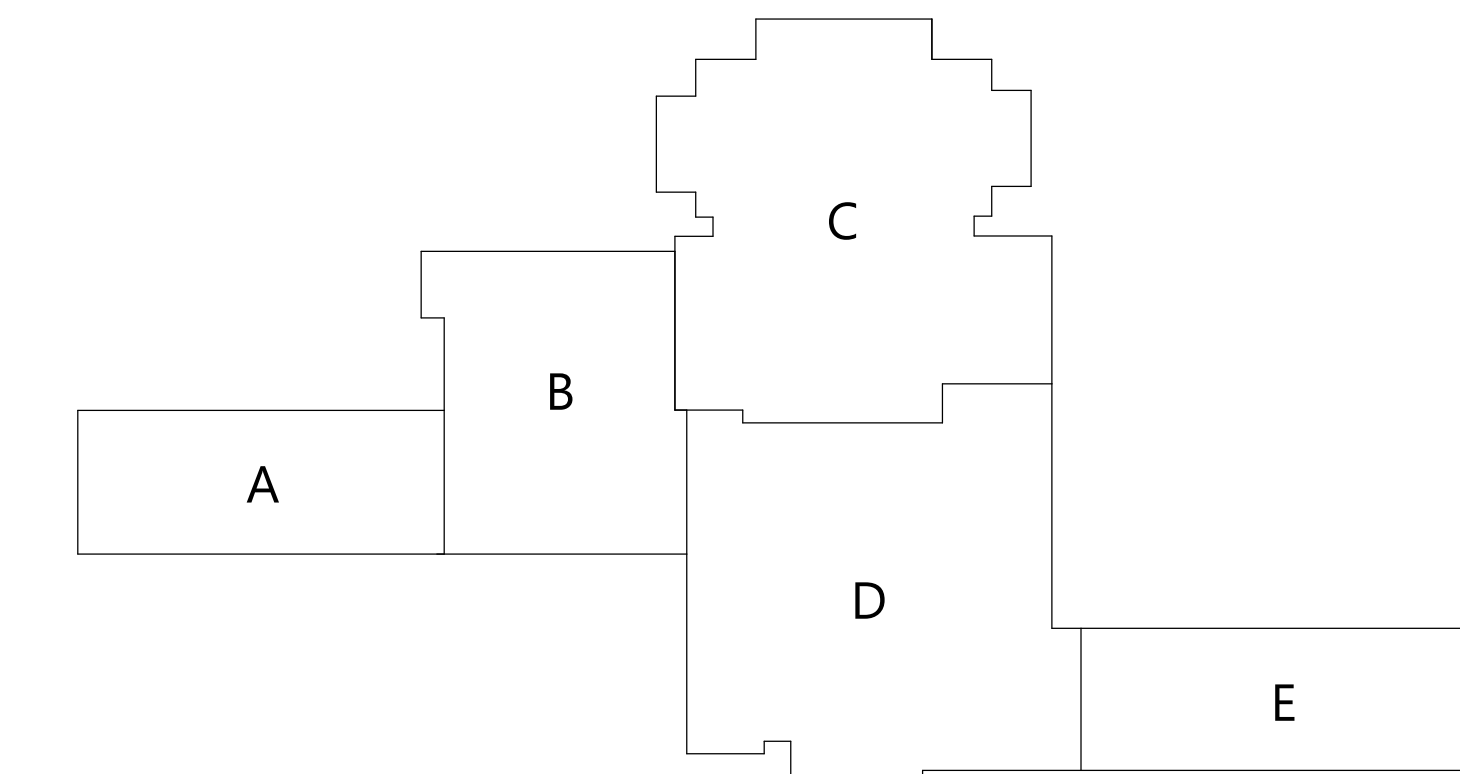
INTERIOR ELEVATION INDICATOR



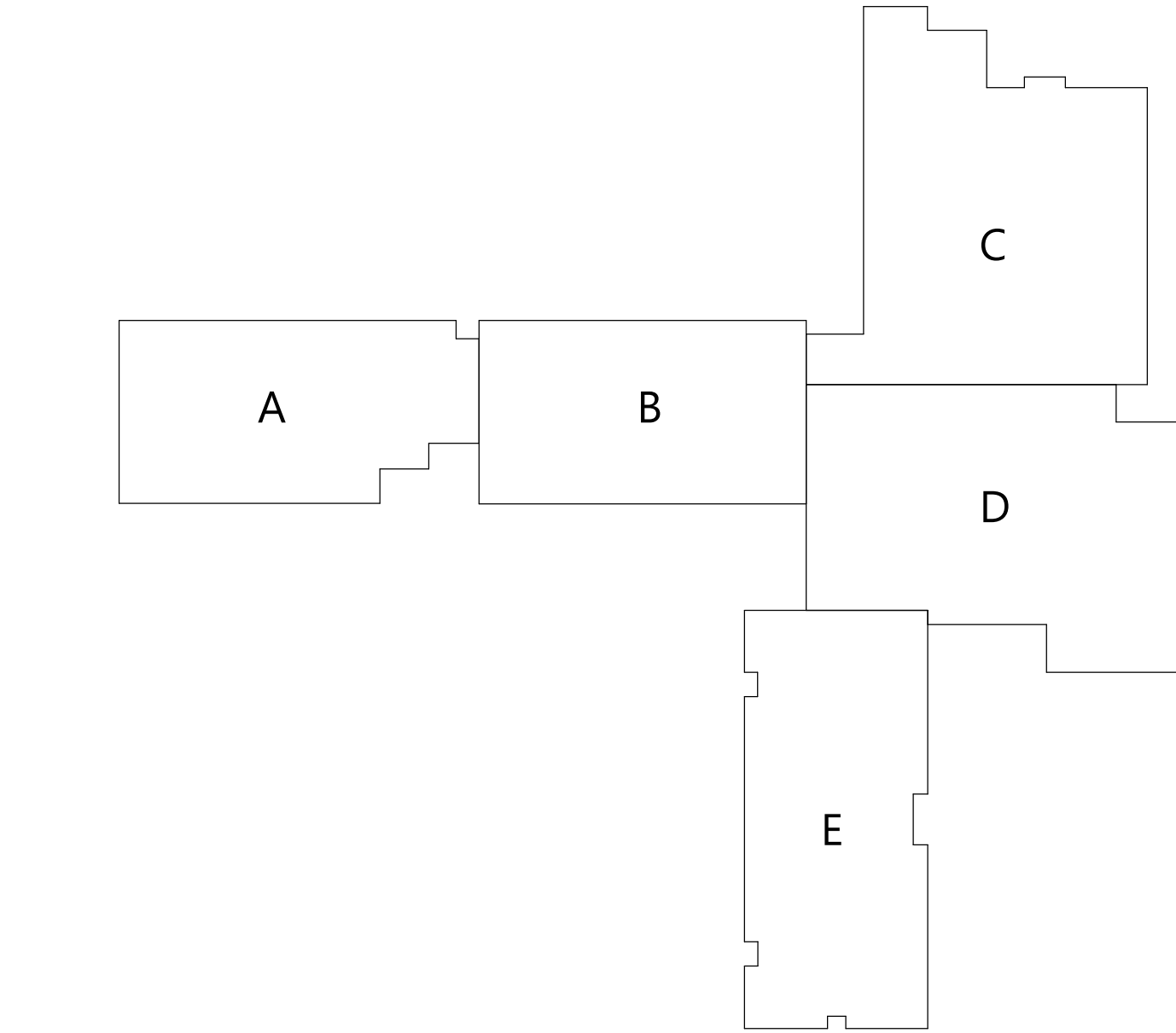
BUILDING KEYPLANS



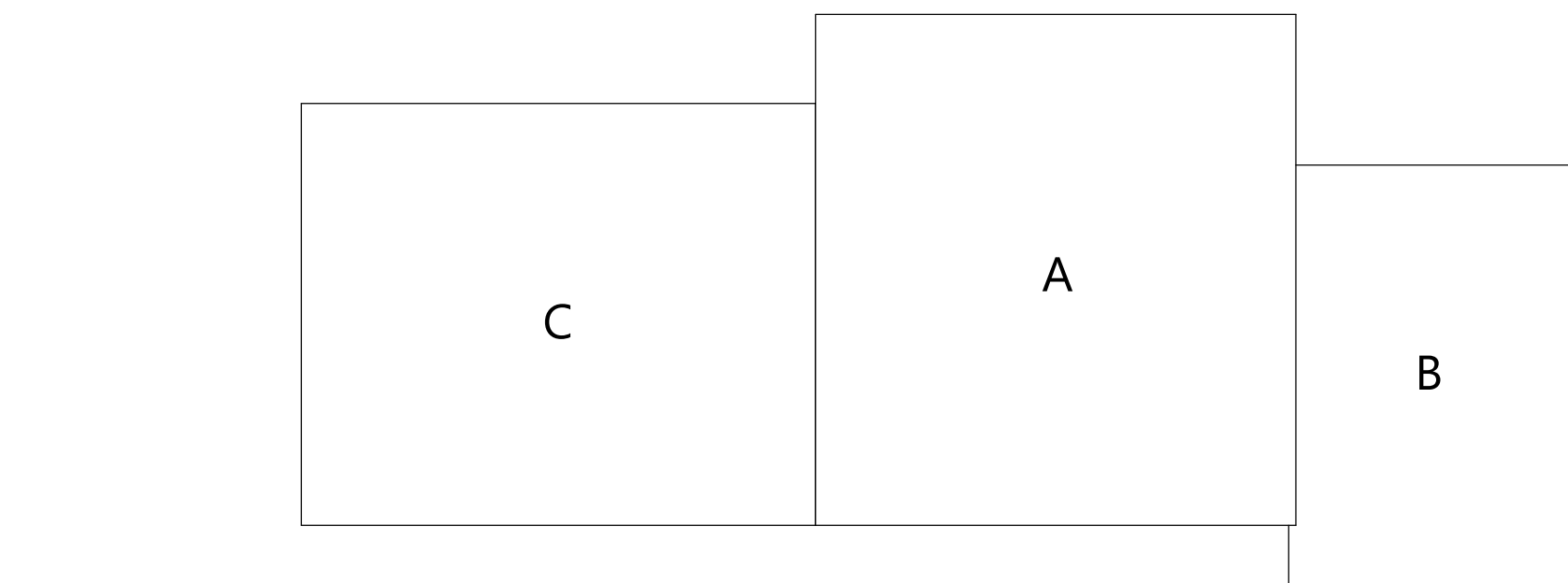
HIGHLAND MIDDLE SCHOOL (HMS)



HIGHLAND HIGH SCHOOL (HHS)

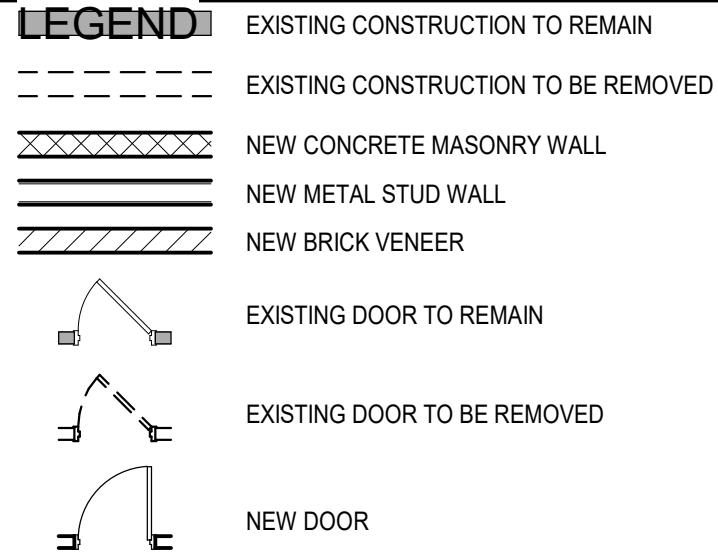


HIGHLAND ELEMENTARY SCHOOL (HES)

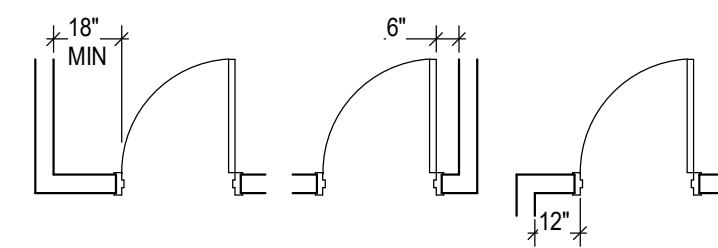


HIGHLAND BUS GARAGE (HBG)

PLAN GRAPHICS



FINISHED DOOR OPENINGS SHALL BE LOCATED AS INDICATED BELOW UNO. DIMENSIONS SHOWN ARE CLEAR DIMENSIONS FROM INSIDE OF FRAME TO WALL FINISH.



GENERAL NOTES

- DIMENSIONS ARE GIVEN THUS (UNLESS NOTED OTHERWISE)  
A. TO FACE OF MASONRY WALL  
B. TO FACE OF METAL STUD  
C. TO COLUMN CENTERLINES  
D. TO FINISH FACE OF SOFFIT OR CEILING  
E. FACE OF EXISTING CONSTRUCTION
- DO NOT SCALE DRAWINGS. IF A DIMENSION IS NOT SHOWN, BRING IT TO THE ATTENTION OF THE ARCHITECT FOR VERIFICATION BEFORE PROCEEDING WITH THE ASSOCIATED WORK
- WALLS ON COLUMN LINES ARE CENTERED UNO
- ALL DIMENSIONS RELATED TO EXISTING CONDITIONS SHALL BE VERIFIED IN FIELD. CONTRACTOR TO NOTIFY ARCHITECT OF ANY DISCREPANCIES PRIOR TO BEGINNING WORK IN THAT AREA
- LAYOUT OF TOILET FIXTURES AND ACCESSIBILITY CLEARANCES ARE SHOWN AS CLEAR DIMENSION. CONTRACTORS ARE REQUIRED TO COORDINATE LAYOUTS OF PARTITIONS, UTILITY CONNECTIONS, AND THICKNESS OF FINISHES TO ALLOW THESE CLEAR DIMENSIONS
- ALL ELEVATIONS (X-X') ARE REFERENCE FROM FIRST FLOOR ELEVATION
- ALL WOOD BLOCKING WITHIN ROOFING SYSTEM AND WITHIN 2'-0" OF GRADE SHALL BE PRESSURE TREATED
- ALL FLOOR PENETRATIONS SHALL BE SMOKE-SEALED AND/OR FIRE STOPPED. COORDINATE WITH HF DWGS FOR SMOKE / FIRE DAMPER REQUIREMENTS
- FOR INTERIOR PARTITION TYPES, REFER TO DRAWING A701
- FOR DOOR SCHEDULE, REFER TO DRAWING A901
- FOR FINISH SCHEDULE, REFER TO DRAWING AF901
- ALL EXPOSED SURFACES OF NEW PARTITIONS AND SOFFITS ARE TO BE FINISHED
- PROVIDE PATCH TO MATCH EXISTING FINISHES AT ALL REMOVAL AREAS, COORDINATE WITH DEMOLITION DRAWINGS AND SPECIFICATIONS
- FOR ALL MATERIAL TESTING, REFER TO SPECIFICATION DIVISION 000220
- ALL CONSTRUCTION SHOWN IS NEW UNLESS NOTED OTHERWISE

19 Front St., Newburgh, New York 12550-7601  
845.561.3379 www.csarch.com

Consultant

HIGHLAND CENTRAL SCHOOL DISTRICT  
HIGHLAND ELEMENTARY SCHOOL  
2022 CAPITAL IMPROVEMENT PROJECT - PHASE 1

Project Title



Expiration Date: 02/28/2025

| DATE | DESCRIPTION |
|------|-------------|
|      |             |
|      |             |
|      |             |
|      |             |
|      |             |
|      |             |
|      |             |
|      |             |
|      |             |

|                 |                       |
|-----------------|-----------------------|
| Drawn By:       | Author                |
| Checked By:     | Checker               |
| Proj. #:        | 62-08-03-04-0-010-014 |
| CSArch Proj. #: | 197-2201.01           |
| Issued for Bid: | 08/18/23              |

Sheet Title

SYMBOLS,  
ABBREVIATIONS,  
KEY PLANS,  
AND MISC.

Sheet No.

HES  
G001

CONSTRUCTION DOCUMENTS

COPYRIGHT © ALL RIGHTS RESERVED