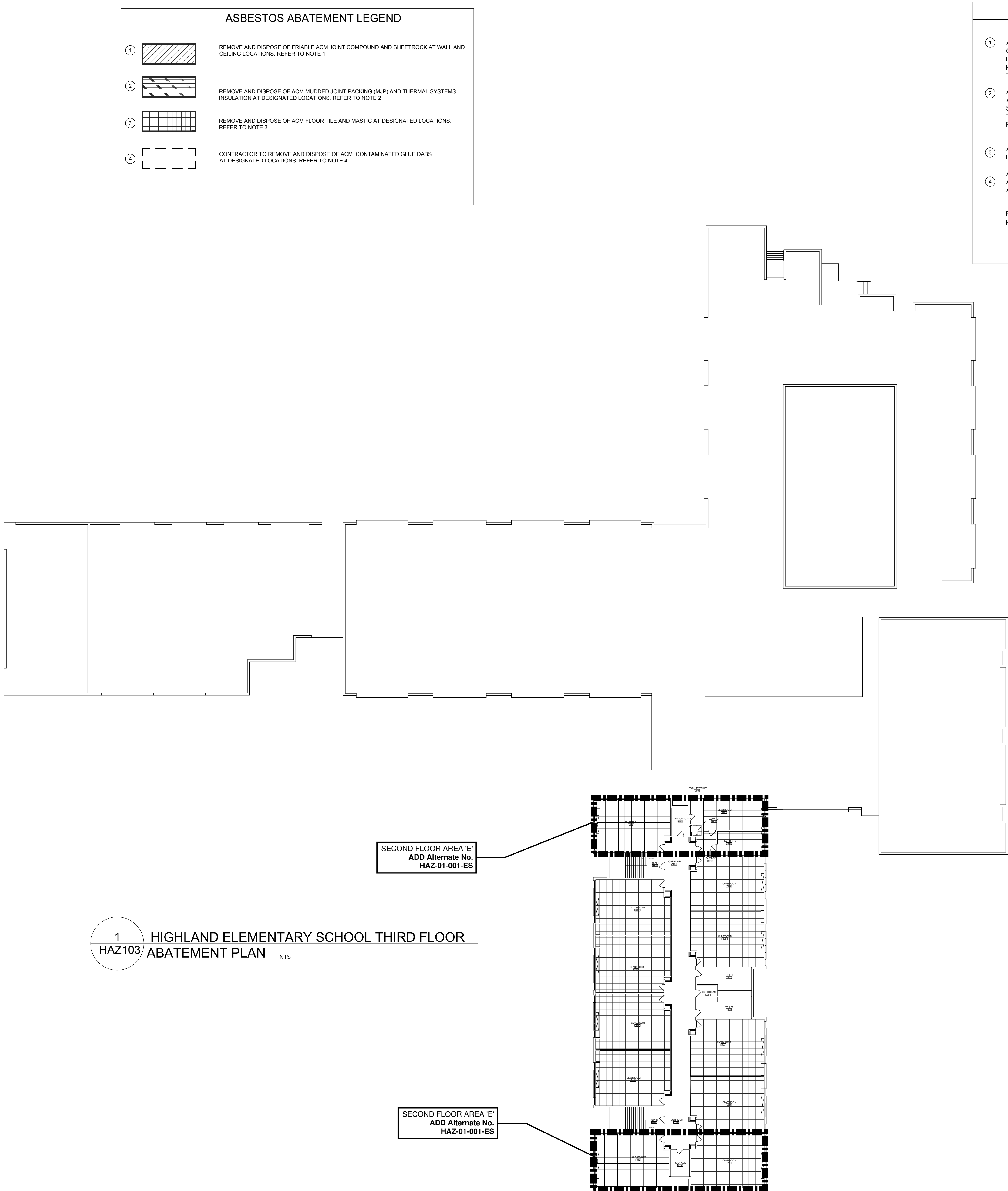


C:\Users\slimamoro\Documents\197-2201 - HES Phase1\_ARCH\_Abatement.rvt



ASBESTOS ABATEMENT LEGEND

①

REMOVE AND DISPOSE OF FRIABLE ACM JOINT COMPOUND AND SHEETROCK AT WALL AND CEILING LOCATIONS. REFER TO NOTE 1

②

REMOVE AND DISPOSE OF ACM MUDDIED JOINT PACKING (MJP) AND THERMAL SYSTEMS INSULATION AT DESIGNATED LOCATIONS. REFER TO NOTE 2

③

REMOVE AND DISPOSE OF ACM FLOOR TILE AND MASTIC AT DESIGNATED LOCATIONS. REFER TO NOTE 3.

④

CONTRACTOR TO REMOVE AND DISPOSE OF ACM CONTAMINATED GLUE DABS AT DESIGNATED LOCATIONS. REFER TO NOTE 4.

ASBESTOS ABATEMENT NOTES

①

ASBESTOS CONTRACTOR IS RESPONSIBLE FOR TOTAL AND COMPLETE REMOVAL AND DISPOSAL OF FRIABLE ACM CONTAINING JOINT COMPOUND AND ASSOCIATED SHEETROCK WALLS TO A HEIGHT OF SIX FEET, TYPICAL AT CORRIDOR LOCKER REMOVAL LOCATIONS. LIGHT FIXTURES WILL BE STABILIZED, HEPA VACUUMED, WET WIPED, PLASTICIZED AND REMAIN IN PLACE. ALL SMOKE AND CARBON MONOXIDE (CO) DETECTORS WILL BE PROTECTED WITH 2 LAYERS OF SIX MIL THICKNESS, FIRE RETARDANT POLY.

②

ASBESTOS ABATEMENT CONTRACTOR IS RESPONSIBLE FOR TOTAL AND COMPLETE REMOVAL AND DISPOSAL OF FRIABLE ASBESTOS CONTAINING MUDDIED JOINT PIPE (MJP) THERMAL SYSTEMS INSULATION LOCATED IN THE BOILER ROOM. SUSPENDED LIGHT FIXTURES WILL BE STABILIZED, HEPA VACUUMED, WET WIPED, PLASTICIZED AND REMAIN IN PLACE. GRID TO BE REMOVED UNDER CONTAINMENT TO ACCESS ACM. ALL SMOKE AND CARBON MONOXIDE (CO) DETECTORS WILL BE PROTECTED WITH 2 LAYERS OF SIX MIL THICKNESS, FIRE RETARDANT POLY.

③

ASBESTOS CONTRACTOR IS RESPONSIBLE FOR TOTAL AND COMPLETE REMOVAL AND DISPOSAL OF NON-FRIABLE ACM FLOOR TILE AND MASTIC AT LOCATIONS INDICATED ON THE PLANS.

④

ASBESTOS CONTRACTOR IS RESPONSIBLE FOR TOTAL AND COMPLETE REMOVAL AND DISPOSAL OF ACM GLUE DABS ADHERING ACOUSTICAL WALL TILE , AND ACOUSTICAL WALL TILE AT LOCATIONS INDICATED. TYPICAL LOCATIONS ARE ASSOCIATED WITH VARIOUS WALL TYPES IN CLASSROOMS AS INDICATED ON PLANS.

REFER TO SPECIFICATIONS SECTION 028200 - SECTION 3.17 FOR A MORE DETAILED DESCRIPTION AND EXPLANATION OF THE REQUIREMENTS OF THE ASBESTOS ABATEMENT WORK.

19 East 63rd Street, New York, NY 10022-7603  
845.561.3179 | www.csarch.com

QuES&T  
Quality Environmental  
Safety & Technology

CSARCH

HIGHLAND CENTRAL SCHOOL DISTRICT  
HIGHLAND ELEMENTARY SCHOOL  
2022 CAPITAL IMPROVEMENT PROJECT - PHASE 1

Project Title

STATE OF NEW YORK  
OFFICE OF THE COMPTROLLER  
OFFICE OF CAPITAL PROJECTS  
OFFICE OF THE CHIEF FINANCIAL OFFICER

NO.	DATE	DESCRIPTION

Drawn By: AN

Checked By: CD

Proj. #: 62-08-03-04-0-010-014

CSArch Proj. #: 197-2201.01

Construction Documents: 1/31/23

Sheet Title  
ELEMENTARY  
SCHOOL  
THIRD  
FLOOR  
ABATEMENT  
PLAN

Sheet No.  
HES  
HAZ-103

CONSTRUCTION DOCUMENTS

COPYRIGHT © ALL RIGHTS RESERVED