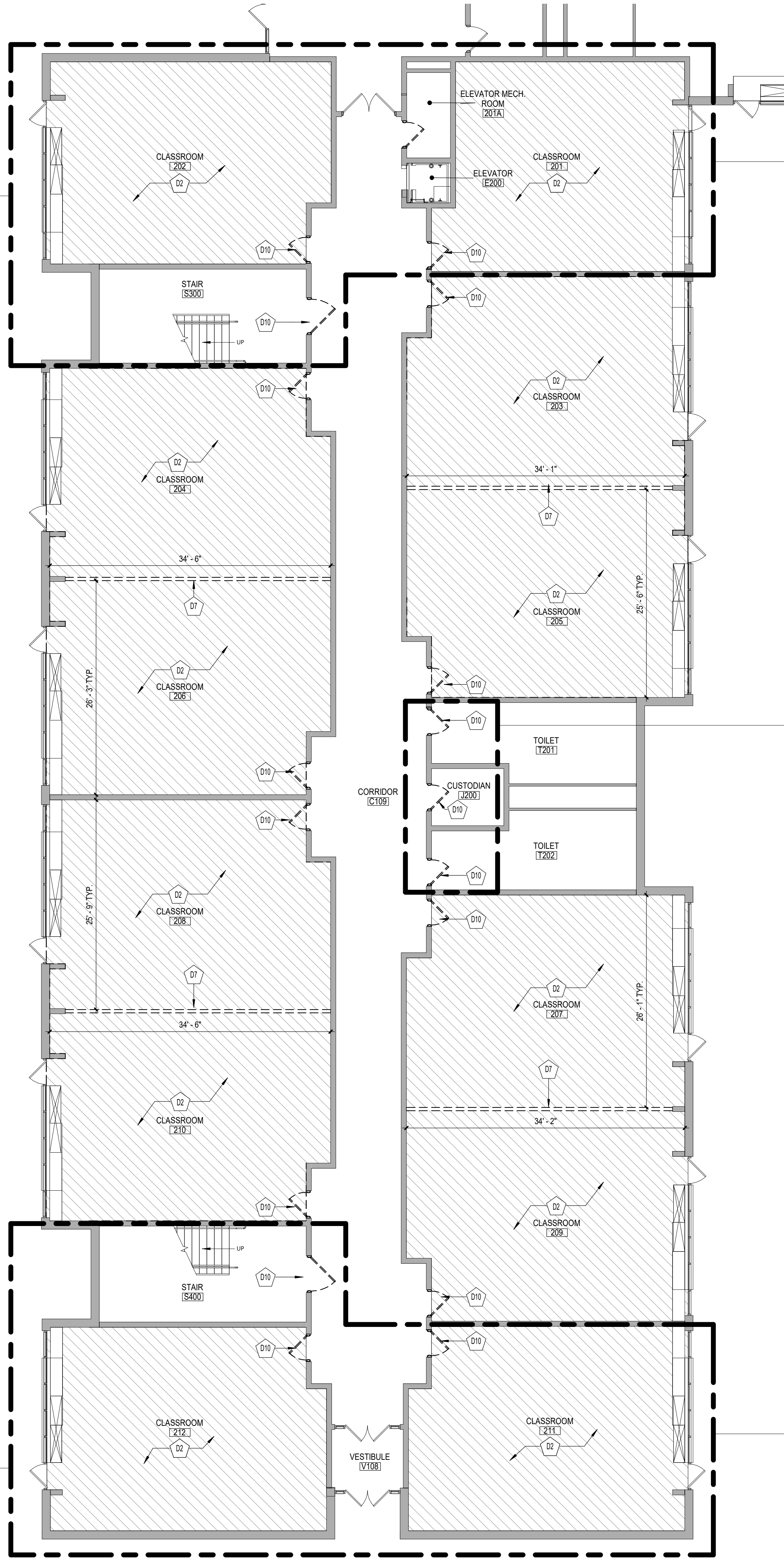


C:\Users\dmliller\Documents\197-2201 - HES Phase1\_ARCH.dmliller03.rvt

ADD Alternate No.  
GC-02-001-ES

ADD Alternate No.  
GC-02-001-ES



**1** FIRST FLOOR DEMOLITION PLAN - AREA 'E'  
AD115 1/8" = 1'-0"

ADD Alternate No.  
GC-02-001-ES

ADD Alternate No.  
GC-02-001-ES

ADD Alternate No.  
GC-02-001-ES

#### GENERAL NOTES

- COORDINATE ALL REMOVALS WITH NEW CONSTRUCTION.
- PATCH AND REPLACE EXISTING AND NEWLY CREATED HOLES IN WALLS (DUE TO REMOVAL) WITH MATERIALS TO MATCH EXISTING CONSTRUCTION.
- SALVAGED ITEMS SHALL BE TURNED OVER TO OWNER UNO.
- ALL KEYED REMOVALS SHALL INCLUDE REMOVAL OF ANY AND ALL ANCHORING SYSTEMS INCLUDING OBJECTS EMBEDDED INTO EXISTING WALLS.
- REFER TO ASBESTOS AND MEP DRAWINGS FOR ADDITIONAL REMOVAL INFORMATION.
- PROVIDE TEMPORARY SHORING AS NECESSARY AT ALL AREAS OF WALL REMOVAL AND NEW WALL PENETRATIONS.
- DRILL CORNERS OF ALL NEW SAWCUT OPENING PRIOR TO SAWCUTTING, TO PREVENT CUTTING INTO SCHEDULED CONSTRUCTION TO REMAIN.

#### KEY NOTES - DEMOLITION

X	DESCRIPTION
D2	REMOVE EXISTING RESILIENT TILE FLOORING, WALL BASE, AND MASTIC IN ITS ENTIRETY. COORDINATE WITH HAZARDOUS MATERIALS DRAWINGS.
D7	REMOVE EXISTING MOVABLE DIVIDING PARTITION IN ITS ENTIRETY INCLUDING TRACKS, PANELS, AND HARDWARE.
D10	REMOVE EXISTING DOOR AND HARDWARE IN ITS ENTIRETY.

19 Front St., Newburgh, New York 12550-7601  
845.561.5379 www.csarch.com

CSARCH

Consultant

## HIGHLAND CENTRAL SCHOOL DISTRICT HIGHLAND ELEMENTARY SCHOOL 2022 CAPITAL IMPROVEMENT PROJECT - PHASE 1

Project Title



Expiration Date: 02/28/2025

DATE	DESCRIPTION

Drawn By: CSA  
Checked By: CSA  
Proj. #: 62-08-03-84-0-010-014  
CSArch Proj. #: 197-2201.01  
Issued for Bid: 08/18/23

Sheet Title

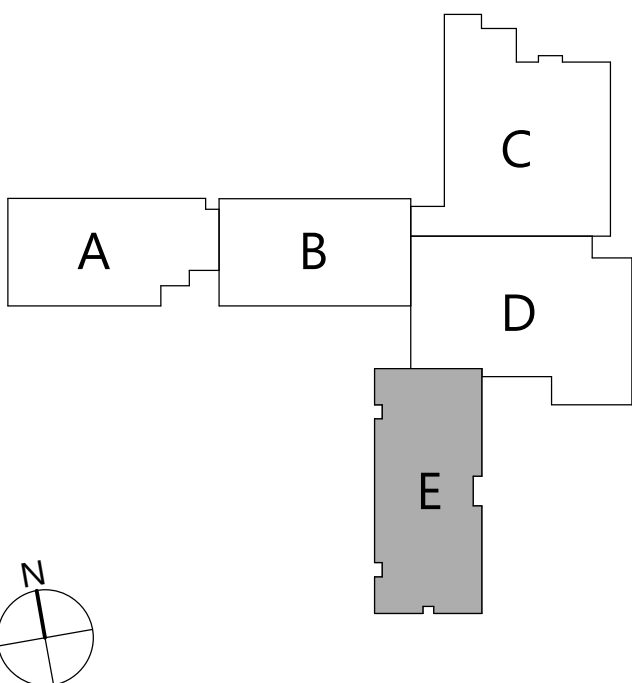
FIRST FLOOR  
DEMOLITION  
PLAN - AREA  
'E'

Sheet No.

HES  
AD115

CONSTRUCTION DOCUMENTS

#### KEYPLAN



COPYRIGHT © ALL RIGHTS RESERVED