

MATCHLINE - SEE 2/E0313 FOR CONTINUATION

MATCHLINE - SEE 2/E0313 FOR CONTINUATION

MATCHLINE - SEE 1/E312 FOR CONTINUATION

MATCHLINE - SEE 1/E312 FOR CONTINUATION

MATCHLINE - SEE 1/E311 FOR CONTINUATION

MATCHLINE - SEE 1/E313 FOR CONTINUATION

MATCHLINE - SEE 1/E313 FOR CONTINUATION

#### Key Notes:

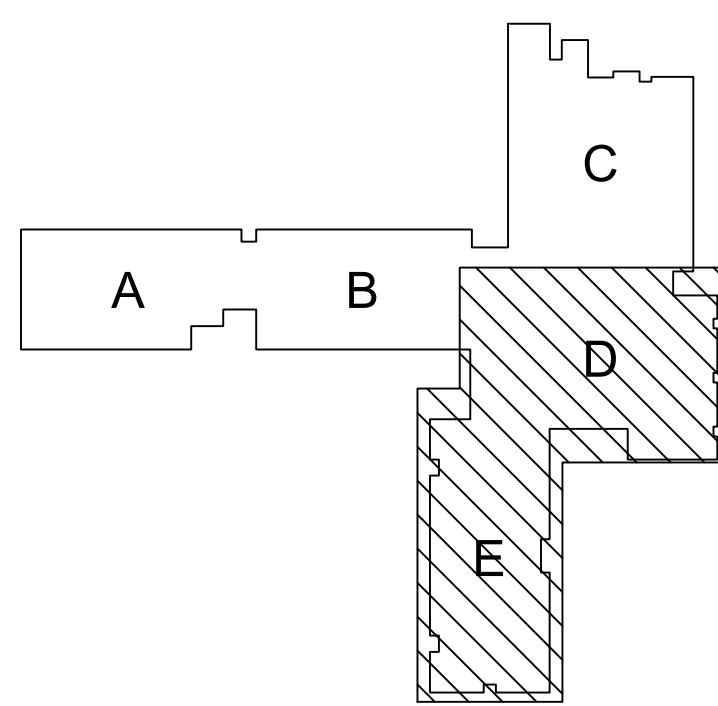
1. PROVIDE NEW PANEL INSTALLED IN PLACE OF EXISTING. CONNECT TO EXISTING DISTRIBUTION WIRING. EXTEND EXISTING CONDUITS & WIRING AS NEEDED TO MAKE FINAL CONNECTIONS. PROVIDE NEW FEEDERS FROM PANEL TO SOURCE. REFER TO ONE-LINE DIAGRAM ON SHEET E105 FOR ADDITIONAL INFORMATION
2. PROVIDE NEW TRANSFORMER. FIELD VERIFY MOUNTING CONDITIONS. PROVIDE SUPPORT FRAME CONSTRUCTED OF MODULAR STEEL CHANNEL AND SUPPORT TRANSFORMER FROM OVERHEAD STRUCTURE.

#### General Notes:

1. IN ALL AREAS WITH EXISTING CEILINGS TO REMAIN, ELECTRICAL CONTRACTOR IS RESPONSIBLE TO REMOVE AND REINSTALL CEILING TILES AND GRID AS NECESSARY TO COMPLETE REMOVAL AND INSTALLATION OF LIGHTING, WIRING, CONDUIT, JUNCTION BOXES, ETC.
2. PRIOR TO REPLACEMENT OF ELECTRICAL PANELS, PERFORM FIELD WORK TO DETERMINE QUANTITIES, SIZES AND RATINGS OF ALL EXISTING BRANCH CIRCUIT BREAKERS. PROVIDE REPLACEMENT PANELS WITH SAME BREAKER CONFIGURATION FOR THE EXISTING BRANCH CIRCUITS.
3. MAINTAIN ALL EXISTING BRANCH CIRCUITS. MODIFY AS NECESSARY TO EXTEND EXISTING CIRCUITRY AND CONNECT TO REPLACEMENT PANELS.

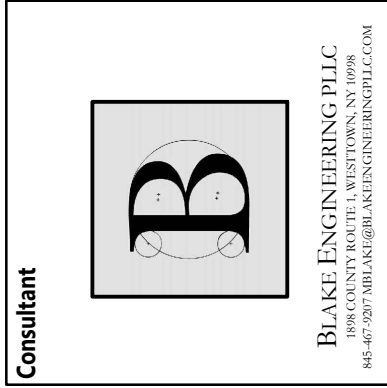
2 Area D First Floor Electrical Plan  
Scale: 1/8" = 1'-0"

#### KEY PLAN



19 Front St. - Newburgh - New York 12550-7601  
845-561-3179 www.csarchp.c.c.o.m

CSARCH



Constant

## HIGHLAND CENTRAL SCHOOL DISTRICT HIGHLAND ELEMENTARY SCHOOL 2022 CAPITAL IMPROVEMENT PROJECT - PHASE 1

Project Title



Expiration Date: 05-31-2025

DATE	DESCRIPTION

Drawn By: SJK  
Checked By: SJK  
Proj. #: 62-08-03-04-0-010-014  
CSArch Proj. #: 197-2201-01  
Issued for Bid: 8/18/23

Sheet Title  
AREA D & E  
FIRST FLOOR  
ELECTRICAL  
PLANS

Sheet No.  
HES  
E313

CONSTRUCTION DOCUMENTS

COPYRIGHT © ALL RIGHTS RESERVED