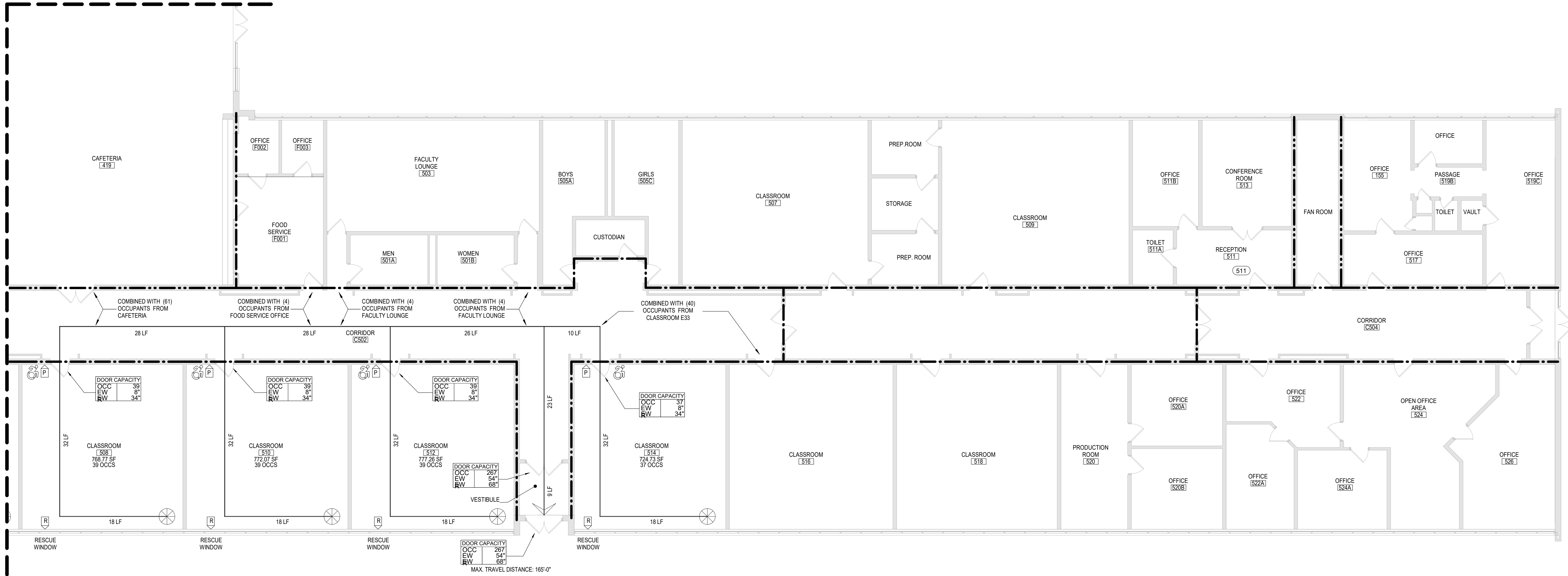


C:\Users\dmliller\Documents\197-2201 - HHS Phase1_ARCH.dmliller303.rvt



1 FIRST FLOOR LIFE SAFETY PLAN - AREA 'E'
LS115 1/8" = 1'-0"

CODE NOTES

ALL NEW WORK TO BE PERFORMED SHALL BE IN ACCORDANCE WITH THE FOLLOWING:

1. 2020 INTERNATIONAL BUILDING CODE
2. 2020 INTERNATIONAL EXISTING BUILDING CODE
3. NYS BUILDING CODE SUPPLEMENTS
4. ANSI A117.1-09
5. 2022 NYSED MANUAL OF PLANNING STANDARDS

ALL EXISTING CONDITIONS AND NEW WORK CONDITIONS CONTAIN THE FOLLOWING MAXIMUM TRAVEL DISTANCES:

1. EXIT ACCESS TRAVEL DISTANCE SHALL NOT EXCEED 200 FEET FOR UNSPRINKLERED BUILDINGS OF OCCUPANCY TYPE 'E'.
2. ANY POINT IN ANY GROUND FLOOR CORRIDOR MUST BE WITHIN 150 FEET ALONG THE LINE OF TRAVEL TO AN EXTERIOR DOORWAY. ANY POINT IN A CORRIDOR OTHER THAN A GROUND FLOOR CORRIDOR SHALL NOT EXCEED 120 FEET ALONG THE LINE OF TRAVEL TO THE STAIR ENCLOSURE OF AN EXIT STAIRWAY.

ALL EXISTING CONDITIONS AND NEW WORK CONDITIONS CONTAIN THE FOLLOWING DEAD-END CORRIDOR INFORMATION:

1. DEAD-END CORRIDOR POCKETS SHALL NOT EXCEED A MAXIMUM DEPTH OF 1 1/2 TIMES THE WIDTH OF THE POCKET, OR 110 TIMES THE WIDTH OF THE CORRIDOR, WHICHEVER IS LESS. MAX DEAD- END DISTANCE IS 20'.

CONSTRUCTION HISTORY

LIFE SAFETY PLAN LEGEND

PRIMARY EXIT

SECONDARY EXIT

RESCUE WINDOW (SECONDARY EXIT)

ACCESSIBLE EXIT

OCCS

(# OF OCCS)

RESCUE ASSISTANCE STATION / AREA OF REFUGE

NUMBER OF OCCUPANTS PER TABLE 1004.1.2 (ACTUAL NUMBER OF OCCUPANTS)

REQUIRED EXIT WIDTH FOR DOOR BASED ON (OCCUPANT * 0.2)

REQUIRED EXIT WIDTH FOR STAIRS BASED ON (OCCUPANT * 0.3)

EXIT PATH OF TRAVEL (START - END)

ABBREVIATIONS

DC DEFIBRILLATOR CABINET
EWP EXIT WIDTH PROVIDED
EWR EXIT WIDTH REQUIRED
FE FIRE EXTINGUISHER
FEC FIRE EXTINGUISHER CABINET
OCCS NUMBER OF OCCUPANTS IN SPACE

SMOKE SEPARATION NOTES

PER S.E.D. S105-1, FLOORS SMOKE SEPARATED

PER S.E.D. S109.3.1.5, SMOKE SEPARATED ZONES APPROX. 30,000 SF OR LESS

--- SMOKE BARRIER
DUCTWORK PENETRATIONS REQUIRED
SMOKE DAMPER

PER S.E.D. S105-2.4, IN SPRINKLERED BUILDINGS, ALL CORRIDORS SHALL BE PROTECTED FROM THE SPREAD OF SMOKE FROM ADJACENT SPACES. DOOR CLOSERS AND SMOKE DAMPERS ARE REQUIRED

FIRE SEPARATION NOTES

--- 1 HOUR RATED FIRE PARTITION
--- 2 HOUR RATED FIRE PARTITION

CODE NARRATIVE:

1960 ORIGINAL CONSTRUCTION:
CONSTRUCTION TYPE: IIA
FIRST FLOOR AREA: 101,765 SF GROSS
CURRENT USE: 'E' - EDUCATION

2001 CONSTRUCTION:
CONSTRUCTION TYPE: IIB
FIRST FLOOR AREA: 112,216 SF GROSS
CURRENT USE: 'E' - EDUCATION

BUILDING AREA:
(PER TABLE 506.2)
PERMITTED FOR TYPE IIB / GROUP 'E'

REQUIRED CORRIDOR FIRE-RESISTANCE RATING:
(PER TABLE 1004.3.2.1)
1 HOUR

KEYPLAN

COPYRIGHT © ALL RIGHTS RESERVED

19 Front St., Newburgh, New York 12550-7601
845.561.1317 www.csarch.com

CSARCH

Consultant

HIGHLAND CENTRAL SCHOOL DISTRICT
HIGHLAND HIGH SCHOOL
2022 CAPITAL IMPROVEMENT PROJECT - PHASE 1

Project Title

Expiration Date: 02/28/2025

DATE	DESCRIPTION

Drawn By: CSA
Checked By: CSA
Proj. #: 62-08-03-84-0-009-014
CSArch Proj. #: 197-2201.01
Issued for Bid: 08/18/23

Sheet Title
FIRST FLOOR
LIFE SAFETY
PLAN - AREA
'E'

Sheet No.
HHS
LS115
CONSTRUCTION DOCUMENTS