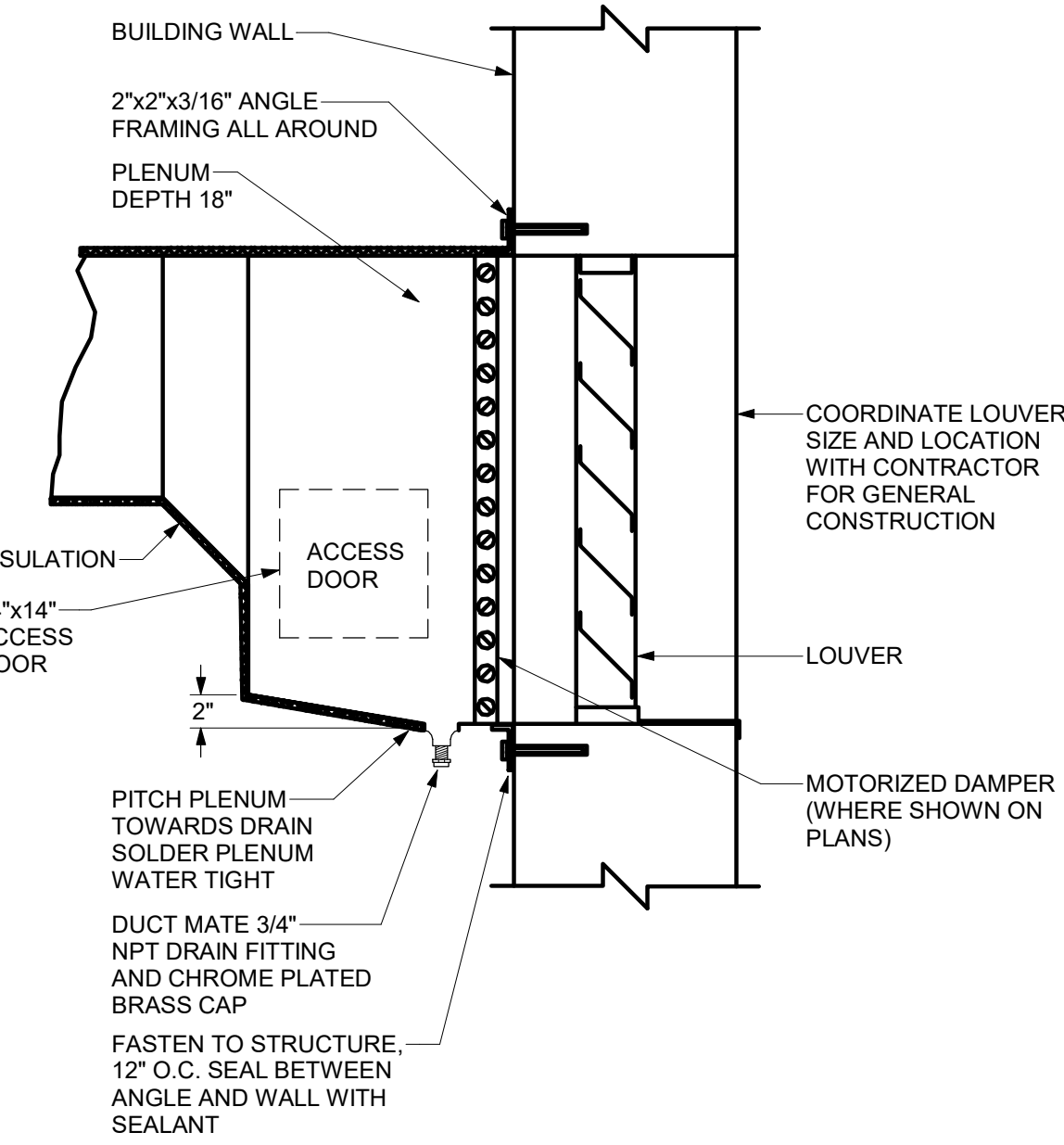
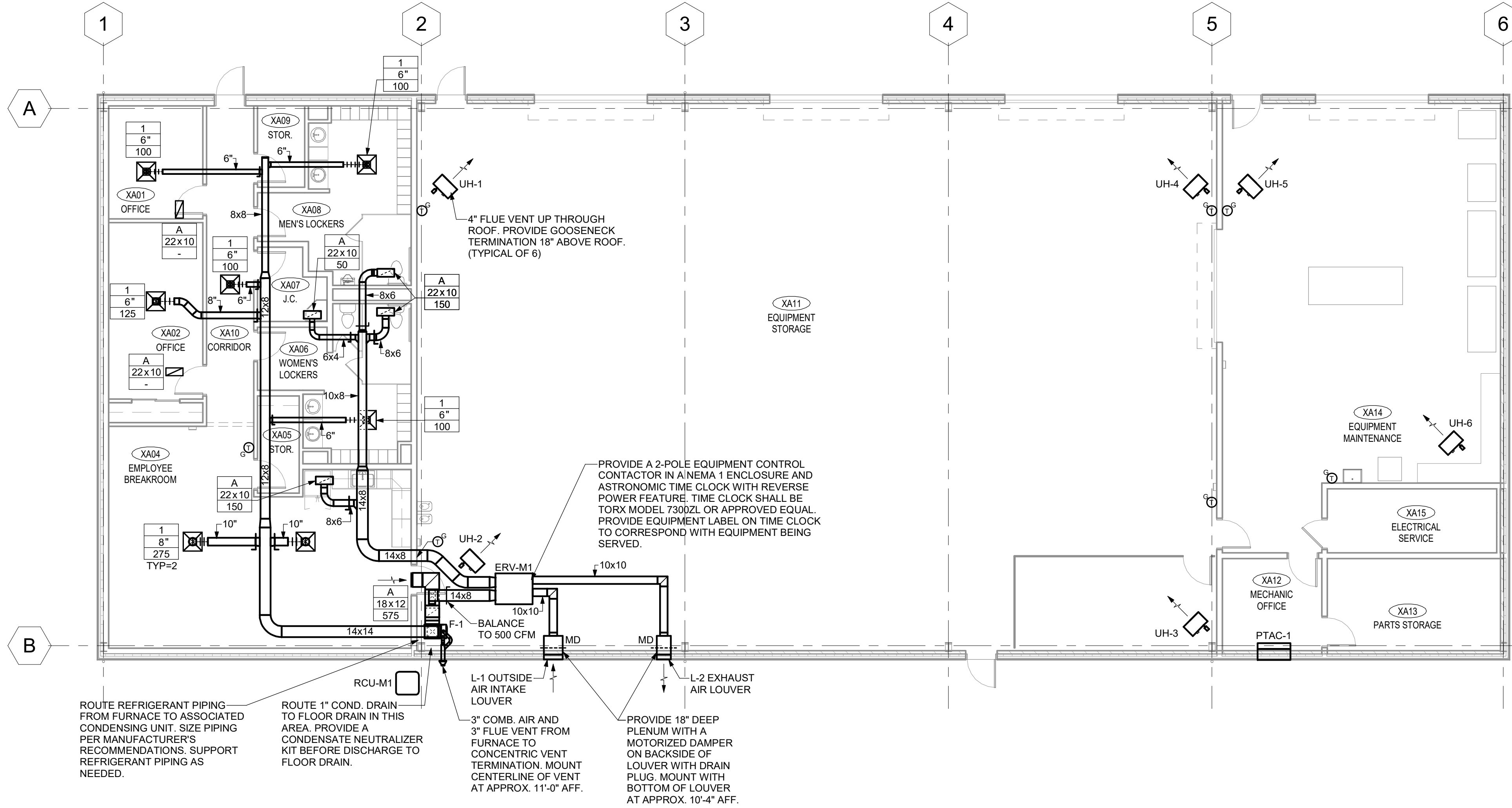




REVISIONS:	
1	
2	
3	
4	
5	
6	
7	
8	
9	
10	
11	
12	
13	
14	
15	
16	
17	
18	
19	
20	



1 MAINTENANCE BUILDING - FIRST FLOOR PLAN - HVAC
1/8" = 1'-0"

FURNACE SCHEDULE - DX/GAS(LP)												
UNIT NO.	LOCATION	CFM	EXT. STATIC (IN. WC)	TYPE	AIRFLOW CONFIGURATION	TOTAL COOLING CAPACITY (TONS)	GAS FURNACE INPUT CAPACITY (MBH)	OUTPUT CAPACITY (MBH)	EFFICIENCY MINIMUM (%)	TEST PROCEDURE	MOTOR RPM	HP
F-1	EQUIPMENT STORAGE	1,075	0.90	CONDENSING	UPFLOW	3.0	80.0	58.2	96.0	ANSI Z21.47	VARIES	0.75
REMARKS: 1. AIRFLOW BASED ON MEDIUM FAN SPEED IN THE 2ND STAGE OF HEATING.												

REGISTER GRILLE AND DIFFUSER SCHEDULE					
TYPE	APPLICATION	MATERIAL	FINISH	MANUFACTURER & MODEL NO.	REMARKS
1	SUPPLY	STEEL	COLOR AS SELECTED BY ARCHITECT	PRICE MODEL SPD	-
A	RETURN/EXHAUST	STEEL	COLOR AS SELECTED BY ARCHITECT	PRICE MODEL SSSD	-

AIR COOLED CONDENSING UNIT SCHEDULE																		
UNIT NO.	LOCATION	SERVES	CAPACITY TONS	COMPRESSORS NO. OF	CAPACITY STEPS	RLA	LRA	REFRIGERANT	AMBIENT AIR TEMP (DEG. F)	COILS ROWS	FIN SPACING (FIN/IN.)	TOTAL FACE AREA (SQ. FT.)	FANS NO. OF FANS	DIA. (IN.)	SPEED (RPM)	TOTAL AIRFLOW (CFM)	MOTOR HP	PERFORMANCE MINIMUM EFFICIENCY SEER
RCU-M1	AT GRADE	OFFICE AREA	3.0	1	1	5.8	38.0	R-410A	95.0	1	24	18.75	1	23.0	825	2,805	0.125	14.0
ELEC CHARACTERISTICS: VOLTS: 208, PHASE: 3, MCA: 12.0, MOP: 20.0																		
MANUFACTURER & MODEL NO. TRANE MODEL 4TTA4036A3000A																		
REMARKS: -																		

UNIT HEATER SCHEDULE - GAS(LP)																
UNIT NO.	LOCATION	TYPE	AIR SIDE AIR FLOW (CFM)	ENT. AIR TEMP (DEG. F)	LVG. AIR TEMP (DEG. F)	GAS INPUT CAPACITY (BTU/H)	OUTPUT CAPACITY (BTU/H)	MIN. GAS PRESS BEFORE REGULATOR (IN. WC)	EFFICIENCY MIN (%)	TEST PROCEDURE	FAN MOTOR RPM	HP	VOLTS	PHASE	MOUNTING HEIGHT (FT.-IN.)	THROW (FT.)
UH-1	EQUIPMENT STORAGE	HORIZONTAL	990	70.0	115.0	60,000	49,200	11.0	82.0	ANSI Z83.8	1,550	0.066	115	1	9.0	36.0
UH-2	EQUIPMENT STORAGE	HORIZONTAL	990	70.0	115.0	60,000	49,200	11.0	82.0	ANSI Z83.8	1,500	0.066	115	1	9.0	36.0
UH-3	EQUIPMENT STORAGE	HORIZONTAL	990	70.0	115.0	60,000	49,200	11.0	82.0	ANSI Z83.8	1,500	0.066	115	1	9.0	36.0
UH-4	EQUIPMENT STORAGE	HORIZONTAL	990	70.0	115.0	60,000	49,200	11.0	82.0	ANSI Z83.8	1,500	0.066	115	1	9.0	36.0
UH-5	EQUIPMENT MAINTENANCE	HORIZONTAL	990	70.0	115.0	60,000	49,200	11.0	82.0	ANSI Z83.8	1,500	0.066	115	1	9.0	36.0
UH-6	EQUIPMENT MAINTENANCE	HORIZONTAL	990	70.0	115.0	60,000	49,200	11.0	82.0	ANSI Z83.8	1,500	0.066	115	1	9.0	36.0
REMARKS: -																

LOUVER SCHEDULE													
UNIT NO.	LOCATION	SERVICE	TYPE	FINISH	FREE AREA (SQ. FT.)	DIMENSIONS (APPROX.) WIDTH (IN.)	HEIGHT (IN.)	DEPTH (IN.)	AIR PERFORMANCE AIR FLOW (CFM)	VEL (FPM)	MAX P.D. (IN. WC)	MANUFACTURER & MODEL NO.	REMARKS
L-1	EQUIPMENT STORAGE XA11	ERV-M1	FIXED LOUVER	POWDER COAT	1.06	24	16	4	500	453	0.04	GREENHECK MODEL ESD-403	1, 2
L-2	EQUIPMENT STORAGE XA11	ERV-M1	FIXED LOUVER	POWDER COAT	1.06	24	16	4	500	453	0.04	GREENHECK MODEL ESD-403	1, 2

REMARKS:
1. INSECT SCREEN.
2. FINISH COLOR TO BE SELECTED BY ARCHITECT.

PACKAGED TERMINAL AIR CONDITIONING UNIT SCHEDULE - AIR COOLED DX/ELECTRIC													
UNIT NO.	LOCATION	SERVICE	COOLING CAPACITY (CFM)	COOLING CAP. TOTAL (DEG. F)	OUTDOOR COIL EAT (DEG. F)	HEATING COIL TYPE	CAPACITY (MBH)	NO. OF STEPS	ELEC CHARACTERISTICS VOLTS	PHASE	MCA	MOP	EFFICIENCY MINIMUM (EER)
PTAC-1	MECHANIC OFFICE	MECHANIC OFFICE	370	35	11.4	95.0	OPEN COIL	6.8	1	208	1	14.1	15.0
REMARKS: 1. PROVIDE 2.5 KW AUXILIARY ELECTRIC HEATER. 2. PROVIDE SUB-BASE KIT.													

PACKAGED ENERGY RECOVERY VENTILATION UNIT SCHEDULE - STATIC PLATE CORE HEAT EXCHANGER																		
UNIT NO.	LOCATION	SERVICE	MODE	SUPPLY FAN AIR FLOW (CFM)	E.S.P. (IN. WC)	T.S.P. (IN. WC)	HP	EXHAUST FAN AIR FLOW (CFM)	E.S.P. (IN. WC)	T.S.P. (IN. WC)	HP	ELECTRICAL CHARACTERISTICS VOLTS	PHASE	MCA	MOP	TOTAL EFF. (%)	PERFORMANCE CONDITIONS (DEG. F) DB WB DB WB	MANUFACTURER & MODEL NO.
ERV-M1	EQUIPMENT STORAGE XA11	OFFICE AREA	SUMMER WINTER	500	0.75	0.78	0.50	500	0.75	0.78	0.50	208	1	8.5	15.0	53.9 65.9	86.5 74.8 75.0 70.0	GREENHECK MODEL MINICORE-10-VG-FM