

**84 CHALET ROAD  
KIAMESHA LAKE, NY 12751**

**JCJ**ARCHITECTURE  
120 HUYSHOPE AVENUE  
SUITE 400  
HARTFORD, CT 06106  
860.247.9226

© 2019 JCJ Architecture

**CONSULTANTS:**  
**MEP & FP ENGINEER**  
M/E ENGINEERING  
60 LAKEFRONT BOULEVARD, SUITE 320  
BUFFALO, NY 14202  
716.845.5092

**OWNERS CONSULTANT**  
AKRF ENGINEERING  
34 SOUTH BROADWAY, SUITE  
WHITE PLAINS, NY 10601  
914-949-7336


PERMIT SET  
09/30/2021



P.I.C. \_\_\_\_\_ L.D. \_\_\_\_\_  
P.M. \_\_\_\_\_ P.A. \_\_\_\_\_

ISSUE	09/30/21
JOB	H18064.14
DRAWN	DMS2
SCALE	1/8" = 1'-0"

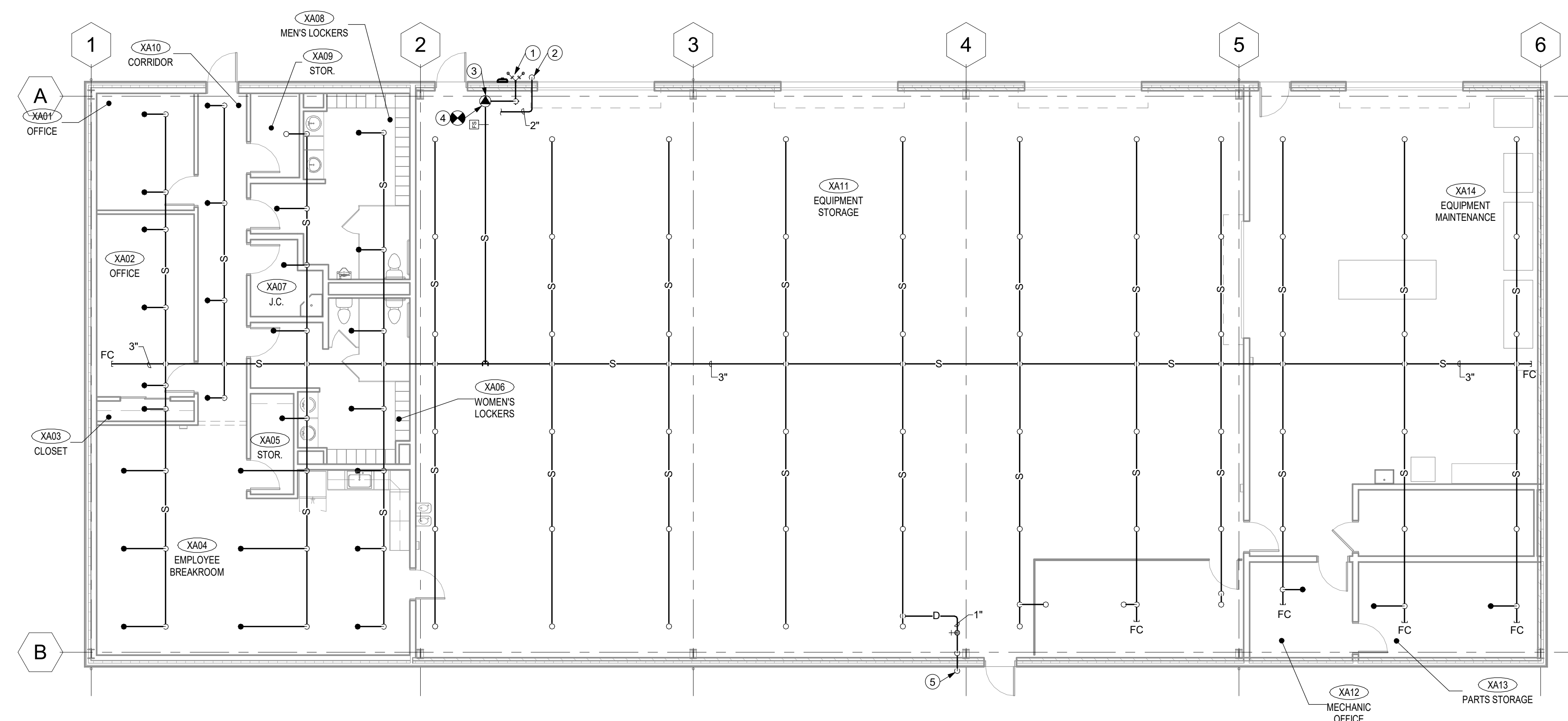
**REVISIONS:**



12 horizontal lines for revisions.

### FIRST FLOOR PLAN - FIRE PROTECTION

FP-113



# 1 MAINTENANCE BUILDING - FIRST FLOOR PLAN - FIRE PROTECTION

**FP-111 DRAWING NOTES**

- 1 5"x4" STORZ FIRE DEPARTMENT CONNECTION WITH 30 DEGREE ELBOW. VERIFY THREAD WITH LOCAL FIRE DEPARTMENT.
- 2 2" FIRE PROTECTION SYSTEM MAIN DRAIN. TERMINATE AT EXTERIOR 1'-6" ABOVE FINISHED GRADE WITH SPLASHBLOCK.
- 3 PROVIDE WATER MOTOR GONG.
- 4 CONNECT TO OUTLET OF BACKFLOW PREVENTER PROVIDED BY DIVISION 22. PROVIDE ARIAL CHECK VALVE AND ALL RELATED APPURTENANCES.
- 5 TERMINATE AT INSPECTOR TEST AND DRAIN PIPING AT EXTERIOR 1'-6" ABOVE FINISHED GRADE WITH SPLASHBLOCK. REFER TO DETAIL ON DRAWING PF-002.