

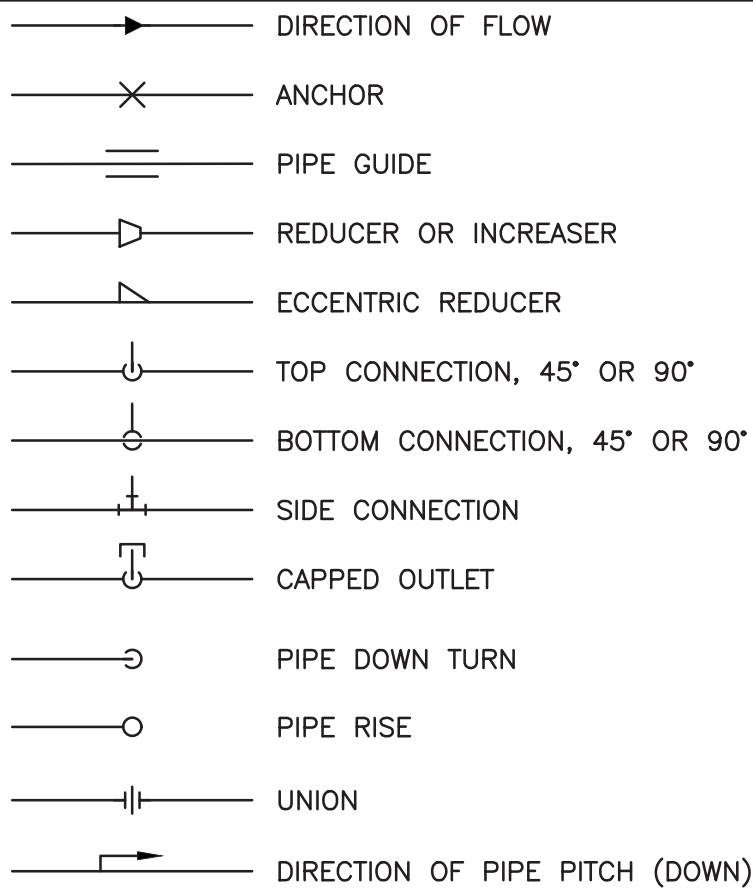
GENERAL NOTES:

- THE DRAWINGS ON THESE PLANS ARE DIAGRAMMATIC. THIS CONTRACTOR SHALL BE RESPONSIBLE FOR COORDINATING HIS WORK WITH OTHER TRADES AND THE BUILDING STRUCTURE. NO EXTRA PAYMENTS WILL BE AUTHORIZED FOR REROUTING OR REMOVAL OF INSTALLED WORK DUE TO LACK OF COORDINATION WITH OTHER SYSTEMS.
- THIS CONTRACTOR SHALL BE RESPONSIBLE FOR ALL CUTTING AND PATCHING OF WALLS, FLOORS AND CEILINGS AS REQUIRED FOR INSTALLATION OF HIS WORK.
- THIS CONTRACTOR SHALL FURNISH AND INSTALL ACCESS PANELS AS REQUIRED WHERE ACCESSIBILITY TO COMPONENTS (VALVES, TRAPS, CLEANOUTS, ETC.) IS REQUIRED FOR MAINTENANCE AND/OR SYSTEM OPERATION.
- ALL PENETRATIONS THROUGH FIRE RATED PARTITIONS SHALL BE SEALED FIRE AND SMOKE TIGHT WITH AN APPROPRIATE U.L. LISTED FIRESTOPPING MATERIAL AND OR SYSTEM.
- ALL PENETRATIONS THROUGH FOUNDATIONS AND EXTERIOR WALLS SHALL BE SEALED WITH EDPM OR EDPM RUBBER GASKET AND SEALED WITH A WATERPROOF, NON-HARDENING SEALANT.
- FURNISH AND INSTALL UNDER SINK PROTECTIVE PIPE COVER KITS ON EXPOSED PIPING AT ALL ADA ACCESSIBLE SINKS AND LAVATORIES.
- COORDINATE FIXTURE ROUGH-INS AND INSTALLATIONS WITH THE ARCHITECTURAL PLANS.
- ALL EXPOSED DOMESTIC WATER DISTRIBUTION PIPING IS TO BE INSULATED.
- PROVIDE SHUT-OFF VALVES AT ALL BRANCH PIPING TAKE-OFFS (UNO) AND AT ALL CONNECTIONS TO EQUIPMENT. PROVIDE UNIONS AT ALL EQUIPMENT CONNECTIONS.
- PROVIDE DRAINS WITH HOSE ADAPTERS AND CAPS ON PIPING AT ALL LOW POINTS. PROVIDE MANUAL VENTS ON PIPING AT ALL HIGH POINTS.
- COORDINATE ELECTRICAL CHARACTERISTICS AND REQUIREMENTS OF ALL MECHANICAL EQUIPMENT WITH ELECTRICAL CONTRACTOR.
- ALL REQUIRED MOTOR STARTERS SHALL BE FURNISHED BY THIS CONTRACTOR AND INSTALLED BY THE E.C.
- ALL REQUIRED CONTROL EQUIPMENT AND WIRING SHALL BE FURNISHED & INSTALLED BY THIS CONTRACTOR.
- WHERE INSTALLATION OR REMOVAL OF BELOW-SLAB PIPING IS INDICATED IN EXISTING CONCRETE SLAB, THIS CONTRACTOR SHALL SAW-CUT AND EXCAVATE THE EXISTING SLAB AS REQUIRED. UPON COMPLETION OF WORK, THIS CONTRACTOR SHALL PATCH THE CONCRETE SLAB. FLOOR FINISH WORK BY G.C.
- THE TERMS "PROVIDE" OR "FURNISH", AS USED ON THESE PLANS, INDICATE THAT THE CONTRACTOR IS TO FURNISH AND INSTALL THE REFERENCED EQUIPMENT OR SYSTEMS IN THEIR ENTIRETY AS REQUIRED FOR A COMPLETE AND OPERABLE SYSTEM.
- CONTRACTOR SHALL PROVIDE ALL COMPONENTS INDICATED ON DETAIL SHEETS, PLANS, SPECIFICATIONS AND ALL PERTINENT EQUIPMENT REQUIRED FOR A COMPLETE AND WORKABLE SYSTEM.
- CONTRACT CLOSE OUT: IN THE PRESENCE OF THE OWNER, ENGINEER OR ARCHITECT, DEMONSTRATING OPERATION OF SYSTEMS AND THAT ALL SPECIFICATIONS HAVE BEEN MET TO THE SATISFACTION OF ALL PARTIES.
- IT IS THE INTENT AND PURPOSE OF THESE SPECIFICATIONS AND DRAWINGS TO INCLUDE AND PROVIDE FOR ALL MATERIALS, APPLIANCES AND LABOR TO PROPERLY COMPLETE AND LEAVE IN PERFECT WORKING CONDITION THE ENTIRE SYSTEM HEREINAFTER SPECIFIED. ANY MATERIAL, LABOR OR APPLIANCE NOT SPECIFICALLY MENTIONED IN THESE SPECIFICATIONS OR SHOWN ON THE DRAWINGS, BUT NECESSARY FOR A COMPLETE INSTALLATION MUST BE FURNISHED BY THIS CONTRACTOR.

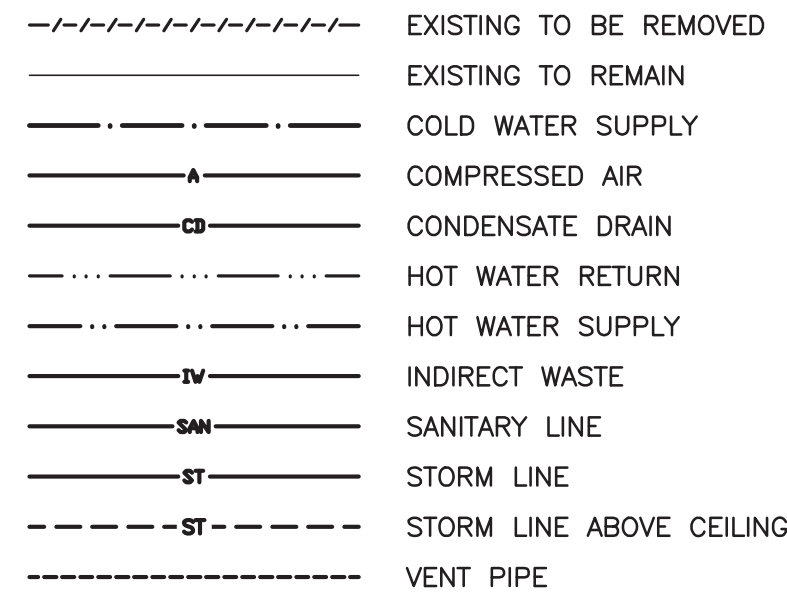
GENERAL PLUMBING NOTES:

- ALL AREAS SHALL BE SERVED WITH (110°F) HOT WATER. MAXIMUM OUTLET TEMPERATURE FOR ANY FIXTURE SHALL BE SET @ 100°F.
- DRAIN PIPING SHOWN ON PLANS SHALL BE INSTALLED BELOW THE FLOOR SHOWN (BELOW SLAB OR ABOVE CEILING OF LOWER FLOOR AS APPROPRIATE) UNLESS OTHERWISE NOTED.
- ALL PLUMBING SUPPLY & VENT PIPING SHOWN SHALL BE INSTALLED IN THE CEILING OF THE FLOOR PLAN SHOWN, UNLESS OTHERWISE NOTED.
- PLUMBING CONTRACTOR IS RESPONSIBLE FOR OWN CUTTING & PATCHING AS REQUIRED. FINISHING SHALL BE BY GENERAL CONTRACTOR.
- INSTALL SECTIONALIZING VALVES AT ALL MAIN "T" ON DOMESTIC HOT & COLD WATER SERVICE.
- VENT PIPING UNDER SLABS SHALL BE A MINIMUM OF 2".
- WASTE PIPING UNDER SLABS SHALL BE A MINIMUM OF 3".
- ALL PLUMBING FIXTURES AND TRIM SHALL BE IN ACCORDANCE WITH ALL APPLICABLE NATIONAL, STATE AND LOCAL CODES, AS WELL AS ALL ADA AND ANSI-A-117.1 REQUIREMENTS.
- INSTALL CONDENSATION CONTROL INSULATION: MINIMUM 1"-INCH THICK FOR ALL PIPE SIZES.
  - COOLING COIL CONDENSATION PIPING TO WASTE PIPING FIXTURE OR INLET. (COORDINATE W/ MECHANICAL CONTRACTOR).
  - PLUMBING PIPING AS FOLLOWS:
    - BODY OF ROOF DRAINS AND STORM PIPE OF HORIZONTAL & VERTICAL RUNS, & OFFSETS (INCLUDING ELBOWS) OF INTERIOR DOWN SPOUT PIPING IN ALL AREAS.
    - WASTE PIPING FROM ELECTRIC WATER COOLERS TO DRAINAGE SYSTEM.
    - WASTE PIPING LOCATED ABOVE BASEMENT FLOOR FROM AIR HANDLING UNITS, FROM FIXTURE (INCLUDING TRAP) TO MAIN VERTICAL WASTE PIPE. (COORDINATE W/ MECHANICAL CONTRACTOR).
    - COLD WATER PIPING.
- HOT & HOT WATER RETURN PIPING SHALL BE INSULATED PER WRITTEN SPECIFICATIONS AND NYS ENERGY CONSERVATION CONSTRUCTION CODE.
- PLUMBING CONTRACTOR SHALL REFER TO ARCHITECTURAL DRAWINGS FOR EXACT LOCATION OF ROOF DRAINS AND FOR ADDITIONAL ROOF DRAIN WORK NOT SHOWN ON PLUMBING DRAWING.
- ROOF LEADERS MUST BE CONVEYED INDEPENDENTLY FROM SANITARY SEWER SYSTEMS. (STORM DRAIN SHALL NEVER TIE INTO SANITARY SEWER SYSTEM).
- UNLESS OTHERWISE NOTED, ALL VALVES 2"ø & SMALLER SHALL BE QUARTER-TURN BALL VALVES AND ALL VALVES 2½" & LARGER SHALL BE GATE VALVES. ALL VALVES SHALL BE OF FULL-PORT DESIGN.
- PLUMBING CONTRACTOR SHALL OBTAIN ALL PERMITS REQUIRED & PAY ALL FEES.
- PLUMBING CONTRACTOR SHALL BE RESPONSIBLE FOR TRENCHING BEDDING AND BACK FILLING AS PER SPECIFICATIONS. ALL TRENCH WORK TO BE COORDINATED WITH THE GENERAL CONSTRUCTION CONTRACTOR.
- ALL PENETRATIONS THROUGH FIRE RATED PARTITIONS SHALL BE SEALED FIRE AND SMOKE TIGHT WITH AN APPROPRIATE U.L. LISTED FIRESTOPPING MATERIAL AND OR SYSTEM.

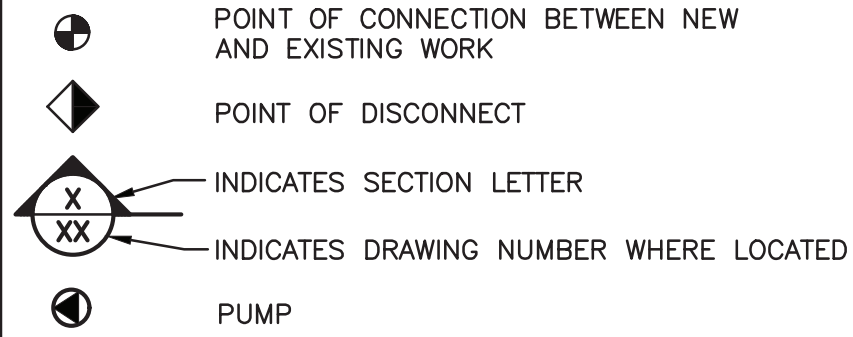
PIPING SYMBOLS



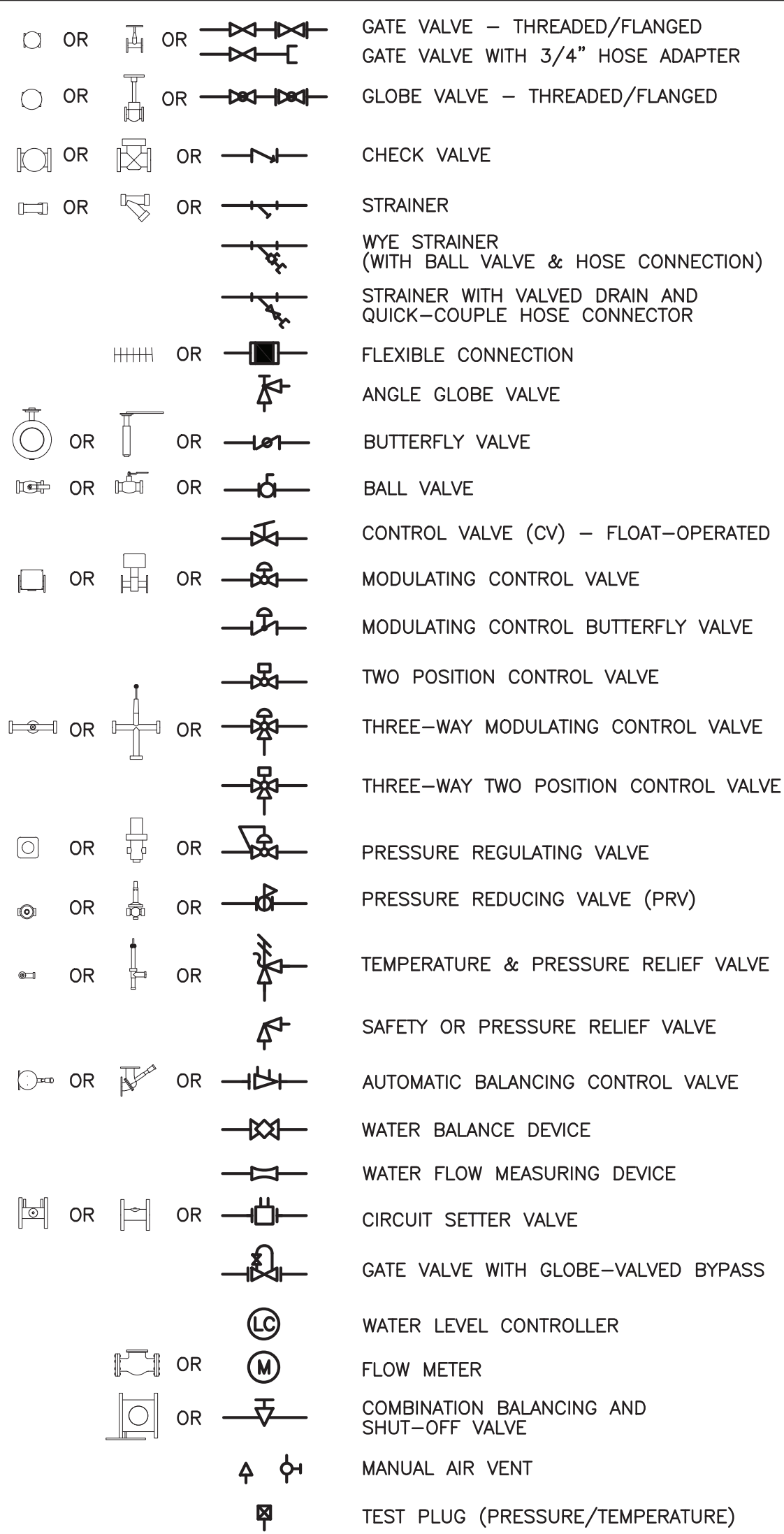
PLUMBING LINE TYPES



GENERAL SYMBOLS



VALVE SYMBOLS



ABBREVIATIONS

ACT	ACOUSTIC CEILING TILE
AD	ACCESS DOOR
AFF	ABOVE FINISHED FLOOR
AP	ACCESS PANEL
BTUH	BRITISH THERMAL UNITS/HOUR
CLG	CEILING
CO	CLEAN OUT
CP	CONDENSATE PUMP
CW	DOMESTIC COLD WATER
DIA	DIAMETER
D	DRAIN
DN	DOWN
DP	DIFFERENTIAL PRESSURE
E.C.	ELECTRICAL CONTRACTOR
ECC	ENGINEERING CONTROL CENTER
ET	EXPANSION TANK
EUH	ELECTRIC UNIT HEATER
EXIST	EXISTING
FC	FLEXIBLE CONNECTION
FCO	FLOOR CLEAN OUT
FD	FLOOR DRAIN
FLR.	FLOOR
FPC	FIRE PROTECTION CONTRACTOR
G.C.	GENERAL CONTRACTOR
GPH	GALLONS PER HOUR
GPM	GALLONS PER MINUTE
H.C.	HVAC CONTRACTOR
HP	HORSE POWER
HTWR	HIGH TEMP. HOT WATER RETURN PIPE (140°F)
HTWS	HIGH TEMP. HOT WATER PIPE (140°F)
HW	DOMESTIC HOT WATER PIPE (110°F)
HWR	DOMESTIC HOT WATER RETURN PIPE (120°F)
LBS/HR	POUNDS PER HOUR
LF	LINEAR FEET
MAX.	MAXIMUM
MBH	ONE THOUSAND BTUH
MER	MECHANICAL EQUIPMENT ROOM
MIN.	MINIMUM
P	PUMP
P.C.	PLUMBING CONTRACTOR
PD	PRESSURE DROP (FEET OF WATER)
PRV	PRESSURE REDUCING VALVE
PSI	POUNDS PER SQUARE IN.
SAN	SANITARY DRAINAGE PIPE
S.S.	STAINLESS STEEL
ST	STORM DRAINAGE PIPE
UH	UNIT HEATER
U.N.O.	UNLESS NOTED OTHERWISE
V	VENT PIPE
VI	VIBRATION ISOLATOR
VIF	VERIFY IN FIELD
VTR	VENT THROUGH ROOF
WCO	WALL CLEAN OUT
WF	WATER FILTER
WFM	WATER FLOW MEASURING DEVICE
WH	WATER HEATER

LEGEND AND SCHEDULE OF PLUMBING EQUIPMENT

TAG	MANUFACTURER	CATALOG #	DESCRIPTION
WC-1	KOHLER	K-84325	"KINGSTON ULTRA" ELONGATED, 1.28 GPF SIPHON JET FLUSHING ACTION WATER CLOSET, VITREOUS CHINA, WHITE FINISH, WALL MOUNTED TOP SPUD. MEETS ASME A112.19.2 AND ADA COMPLIANT. PROVIDE WITH KOHLER "STRONGHOLD" K-4371-CA ELONGATED SEAT. PROVIDE WITH ROYAL "111 ESS-1.28" HARDWIRED SENSOR-OPERATED FLUSHOMETER WITH TRUE MECHANICAL OVERRIDE. PROVIDE ALL OTHER HARDWARE REQUIRED FOR A COMPLETE INSTALLATION.
LV-1	TOTO	LT307	WALL-HUNG 20-7/8" X 18" LAVATORY, VITREOUS CHINA, WHITE FINISH. PROVIDE WITH ZURN "71231EZ" UNIVERSAL CONCEALED ARM CARRIER. MEETS ASME A112.19.2 AND ADA COMPLIANT. PROVIDE WITH SLOAN EAF-200 0.5 GPM, LAMINAR FLOW, HARDWIRED SENSOR-OPERATED FAUCET. PROVIDE WITH THERMOSTATIC MIXING VALVE. PROVIDE ALL OTHER HARDWARE REQUIRED FOR A COMPLETE INSTALLATION.
SS-1 (204)	STERIS	AMSCO FLEXMATIC	SINGLE SCRUB STATION, ALL STAINLESS STEEL CONNECTION WITH ALL ROUNDED INSIDE CORNERS. THERMOSTATICALLY CONTROLLED MIXING VALVE AND HIGH SIDE PANELS TO CONTROL SPLASH. FOOT PEDAL CONTROL INFRARED HANDS FREE CONTROLS AND SOAP OPERATION. SIZE 32"x25"x48"H.
RPS-1 (214)	STERIS	AMSCO 50	REPROCESSING SINK, AIR AND WATER WITH TIP ATTACHMENTS, BACK SPLASH-MOUNTED PRE-RINSER AND FAUCET COMBO WITH FOOT PEDAL CONTROL, TREATED WATER, MAGNETIC BACK SPLASH AND ETCHED GALLON MARKERS IN ALL BAYS. BAY DIMENSIONS: 30"x17"x10".
DF-1	ELKAY	LZSTL8WSLK	ELKAY EZH20 VERSATILE BI LEVEL ADA COOLER, FILTERED 8 GPH STAINLESS, 50 °F DRINKING WATER, 115V/60HZ, 7.5MCA. PROVIDE WITH ALL OTHER HARDWARE REQUIRED FOR COMPLETE INSTALLATION.
SH-1	MOEN	8342EP15	PRESSURE BALANCING SHOWER MIXING VALVE TRIM KIT, 2.5 GPM. WALL-MOUNTED SHOWER HEAD WITH ADDITIONAL HANDHELD SHOWERHEAD ON A 69" METAL HOSE AND 30" SLIDE BAR. PROVIDE WITH ALL OTHER HARDWARE REQUIRED FOR COMPLETE INSTALLATION.
NFHB-1	ZURN	Z1300	NON-FREEZE WALL HYDRANT, AUTOMATIC DRAINING, ANTI-SIPHON. BRONZE CASING WITH ALL BRONZE INTERIOR PARTS. COORDINATE FINAL LOCATIONS WITH ARCHITECT AND OWNER. PROVIDE WITH ALL OTHER HARDWARE REQUIRED FOR COMPLETE INSTALLATION.
HB-1	ZURN	Z875L7	HOSE BIB WITH VACUUM BREAKER SPOUT.
HB-2	ZURN	Z1300	HOT AND COLD WALL HYDRANT, AUTOMATIC DRAINING, ANTI-SIPHON. BRONZE CASING WITH ALL BRONZE INTERIOR PARTS. COORDINATE FINAL LOCATIONS WITH ARCHITECT AND OWNER. PROVIDE WITH ALL OTHER HARDWARE REQUIRED FOR COMPLETE INSTALLATION.
ED-1	ZURN	Z300C	GENERAL PURPOSE, DURA-COATED CAST IRON BODY FLOOR DRAIN. TYPE C, NICKEL BRONZE 8" ø STRAINER. COORDINATE PIPE SIZE WITH FLOOR PLANS. PROVIDE WITH 1/2" TRAP PRIMER CONNECTION. PROVIDE WITH ALL OTHER HARDWARE REQUIRED FOR COMPLETE INSTALLATION.
WB-1	ZURN	Z300C-WB	WATER CONTROL BOX - THOROFUSH DRAIN FOR FLOOR DRAIN CONNECTION AND FOR FREQUENT FLUSHING. COMPLETE WITH CLAMPING COLLAR AND ALL APPURTENANCES FOR A COMPLETE SYSTEM.
RD-1	ZURN	Z163-E	15" DIAMETER ROOF DRAIN AND OVERFLOW DRAIN, DURA-COATED CAST IRON BODIES WITH COMBINATION MEMBRANE FLASHING CLAMP. SEE FLOOR PLANS FOR OUTLET SIZES.
QDS	ZURN	Z199	OVERFLOW ROOF DRAINAGE DOWNSPOUT NOZZLE. ALL NICKEL BRONZE BODY. COORDINATE PIPE SIZES WITH DRAWINGS. PROVIDE WITH ALL OTHER HARDWARE REQUIRED FOR COMPLETE INSTALLATION.
MS-1	FIAT	MSB2424	MOLDED STONE MOP SINK BASIN. 24"x24" C/W GRID STRAINER, 2" OUTLET. SUPPLY WITH MODEL #A880 WALL SERVICE FAUCET AND ALL NECESSARY HARDWARE FOR A COMPLETE INSTALLATION.
EW-1 (207)	BRADLEY	S19-310LL AND S19-2200 207	DRENCH SHOWER/EYEWASH-PLASTIC SHOWERHEAD AND STAINLESS STEEL BOWL, EYEWASH UNIT COMPLETE WITH EF600 EMERGENCY THERMOSTATIC MIXING VALVE AND ALL OTHER APPURTENANCES FOR A COMPLETE SYSTEM.
WH-1	LOCHINVAR	WHP-125 AND RSJ120	WATER SOURCE HEAT PUMP AND VERTICAL ROUND JACKETED GLASS LINED TANK. HEAT PUMP RECOVERY RATE AT 174 GAL/HR. CONDENSER WATER FLOW RATE AT 25GPM AND 20GPM FOR THE EVAPORATOR. 208/3/60 VOLTS AT 70 MOPC POWER SUPPLY. PROVIDE ASME RATED T&P RELIEF VALVE. UNIT COMPLETE WITH ELECTRONIC USER INTERFACE, THERMAL EXPANSION TANK AND HOT WATER RECIRCULATION PUMP STATION BRADLEY MODEL NRS-8 WITH HL80 (559-3080) MIXING VALVE AND WITH TACO 006E3 ECM CIRCULATOR.

2020 ENERGY CONSERVATION CONSTRUCTION CODE OF NYS  
TABLE C403.11.3  
MINIMUM PIPE INSULATION THICKNESS (IN INCHES)<sup>a,c</sup>

FLUID OPERATING TEMPERATURE RANGE AND USAGE (°F)	INSULATION CONDUCTIVITY		NOMINAL PIPE OR TUBE SIZE (INCHES)				
	CONDUCTIVITY (BTUxIN)/(HxFT²x°F) <sup>b</sup>	MEAN RATING TEMPERATURE °F	<1"	1 TO <1½"	1½" TO <4"	4" TO <8"	8"
> 350	0.32-0.34	250	4.5	5.0	5.0	5.0	5.0
251-350	0.29-0.32	200	3.0	4.0	4.5	4.5	4.5
201-250	0.27-0.30	150	2.5	2.5	2.5	3.0	3.0
141-200	0.25-0.29	125	1.5	1.5	2.0	2.0	2.0
105-140	0.21-0.28	100	1.0	1.0	1.5	1.5	1.5
40-60	0.21-0.27	75	0.5	0.5	1.0	1.0	1.0
< 40	0.20-0.26	50	0.5	1.0	1.0	1.0	1.5

FOR SI: 1" = 25.4mm, °C = [(°)-32]/1.8

- FOR PIPING SMALLER THAN 1½" AND LOCATED IN PARTITIONS WITHIN CONDITIONED SPACES, REDUCTION OF THESE THICKNESSES BY 1" SHALL BE PERMITTED (BEFORE THICKNESS ADJUSTMENT REQUIRED IN FOOTNOTE B) BUT NOT TO A THICKNESS LESS THAN 1".
- FOR INSULATION OUTSIDE THE STATED CONDUCTIVITY RANGE, THE MINIMUM THICKNESS (T) SHALL BE DETERMINED AS FOLLOWS:

$$T=r[(1+t/R)^{k/a}-1]$$

- WHERE:
- T = MINIMUM INSULATION THICKNESS
  - r = ACTUAL OUTSIDE RADIUS OF PIPE
  - t = INSULATION THICKNESS LISTED IN THE TABLE APPLICABLE FLUID TEMPERATURE AND PIPE SIZE
  - k = CONDUCTIVITY OF ALTERNATE MATERIAL AT MEAN RATING TEMPERATURE INDICATED FOR THE APPLICABLE FLUID TEMPERATURE [(BTUxIN)/(HxFT²x°F)]
  - a = THE UPPER VALUE OF THE CONDUCTIVITY RANGE LISTED IN THE TABLE FOR THE APPLICABLE FLUID TEMPERATURE
  - c. FOR DIRECT-BURIED HEATING AND HOT WATER SYSTEM PIPING, REDUCTION OF THESE THICKNESSES BY 1½" (38mm) SHALL BE PERMITTED (BEFORE THICKNESS ADJUSTMENT REQUIRED IN FOOTNOTE B BUT NOT TO THICKNESSES LESS THAN 1".

SCHEDULE OF EQUIPMENT  
SERVICE PROVISIONS

FIXTURE DESIGNATION	DRAIN	VENT	WATER SUPPLY	
			CW	HW
WC-1	4"	2"	1"	--
LV-1	1½"	1½"	½"	½"
DF-1	1½"	1½"	½"	--
MS-1	3"	1½"	¾"	¾"
HB-1	--	--	¾"	--
S-1	1½"	1½"	½"	½"
SH-1	2"	1½"	½"	½"
FD-1	3"	1½"	--	--

DOMESTIC WATER HEATER NOTES:

- PIPE P&T WATER TO FLOOR DRAIN.
- PROVIDE BOILER DRAINS FOR EACH HEATER.
- PROVIDE 4" CONCRETE HOUSEKEEPING PAD UNDER WATER HEATERS AND EXPANSION TANK.
- PROVIDE UNIONS AT INLET AND OUTLET CONNECTIONS TO ALL EQUIPMENT.
- ALL VALVES TO BE 1/4 TURN BALL VALVES, FULL PORT, UNLESS OTHERWISE NOTED.
- INDEPENDENTLY SUPPORT PUMPS AS NECESSARY. ELECTRICAL CONNECTION BY E.C. CONTROL BY THIS CONTRACTOR.
- MOTORIZED SOLENOID VALVES FOR SAFETY SHUTDOWN SHALL BE INSTALLED WITH AQUASTAT CONTROLLER SET AT +15°F ABOVE DELIVERY TEMPERATURE (ADJUSTABLE). VALVES SHALL BE SELF CONTAINED, AUTOMATIC RESETING.

ENERGY CODE STATEMENT:

TO THE BEST OF THE REGISTERED DESIGN PROFESSIONAL'S KNOWLEDGE, BELIEF AND PROFESSIONAL JUDGMENT, THESE PLANS AND/OR SPECIFICATIONS ARE IN COMPLIANCE WITH THE 2020 ENERGY CODE.

UNIFORM CODE STATEMENT:

TO THE BEST OF THE REGISTERED DESIGN PROFESSIONAL'S KNOWLEDGE, BELIEF AND PROFESSIONAL JUDGMENT, THESE PLANS AND/OR SPECIFICATIONS ARE IN COMPLIANCE WITH THE 2020 UNIFORM CODE.

REVISION SCHEDULE

#	DESCRIPTION	DATE
---	-------------	------

SEAL

DANIEL STEINBERG, P.E.

NY PROFESSIONAL ENGINEER

800 Troy-Schenectady Road  
Suite 100  
Lewiston, NY 14109  
(518) 462-2470  
www.hymanhayes.com

HYMAN HAYES ASSOCIATES

ARCHITECT/STRUCTURAL ENGINEER

HYMAN HAYES ASSOCIATES

COST CONSULTANT	STUART LYNN COMPANY
FIRE CONSULTANT	CLASSIC CONTRACT ENGINEERS LLC
IT/SECURITY CONSULTANT	ELITE SECURITY & TECHNOLOGIES
CIVIL CONSULTANT	ELITE SURVEYING & LAND SURVEYING PC
M/E/P CONSULTANT	FELEZENBERG
FORENSIC CONSULTANT	crime lab design

ORANGE COUNTY

ORANGE COUNTY MEDICAL EXAMINER'S OFFICE

22 WELLS FARM RD.  
GOSHEN, NY 10924

SHEET TITLE

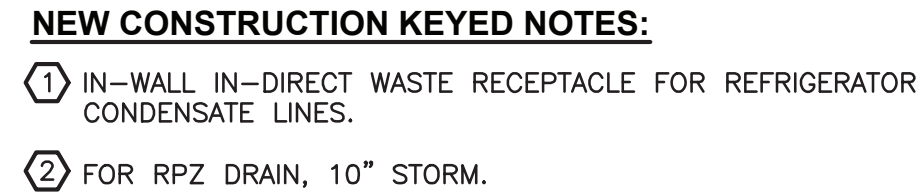
PLUMBING SYMBOLS, NOTES AND ABBREVIATIONS

DATE:	SCALE:	DRAWN BY:	CHECKED BY:	APPROVED:	CLIENT APPROVAL:	HH&H PROJ. NO.:	CLIENT PROJ. NO.:
11/18/2022	AS SHOWN	ZR	DSS	MEF		202071	







SHEET NUMBER

P001





**1 PLUMBING SANITARY FLOOR PLAN**  
SCALE: 1/8"=1'-0"

P100									
SHEET NUMBER									
DATE: 11/18/2022		SCALE: AS SHOWN		DRAWN BY: ZR		CHECKED BY: DSS		APPROVED: MDF	
PLUMBING SANITARY FLOOR PLAN					ORANGE COUNTY MEDICAL EXAMINER'S OFFICE				
SHEET TITLE					ORANGE COUNTY, NEW YORK				
22 WELLS FARM RD. GOSHEN, NY 10924					ORANGE COUNTY, NEW YORK				
									
ARCHITECT/STRUCTURAL ENGINEER					ARCHITECT/STRUCTURAL ENGINEER				
HYMAN HAYES ASSOCIATES					HYMAN HAYES ASSOCIATES				
									
800 Troy Square/4th Road Suite 103 East Troy, NY 10924 (914) 432-3470 www.hymanhayes.com					800 Troy Square/4th Road Suite 103 East Troy, NY 10924 (914) 432-3470 www.hymanhayes.com				
SEAL DANIEL STEINBERG, P.E.					SEAL DANIEL STEINBERG, P.E.				
									
NY PROFESSIONAL ENGINEER No. 070675-1					NY PROFESSIONAL ENGINEER No. 070675-1				
STUART LYNN COMPANY					STUART LYNN COMPANY				
CLASSIC ARCHITECTS INTERIORS LLC					CLASSIC ARCHITECTS INTERIORS LLC				
IT SECURITY CONSULTANT					IT SECURITY CONSULTANT				
CIVIL CONSULTANT					CIVIL CONSULTANT				
MEP CONSULTANT					MEP CONSULTANT				
FORENSIC CONSULTANT					FORENSIC CONSULTANT				
crime lab Design					crime lab Design				
FELLENZER III					FELLENZER III				
Fusco Engineering & Land Surveying PC					Fusco Engineering & Land Surveying PC				
OVERSEAS TECHNOLOGIES					OVERSEAS TECHNOLOGIES				
FE PROJECT # 20-339					FE PROJECT # 20-339				





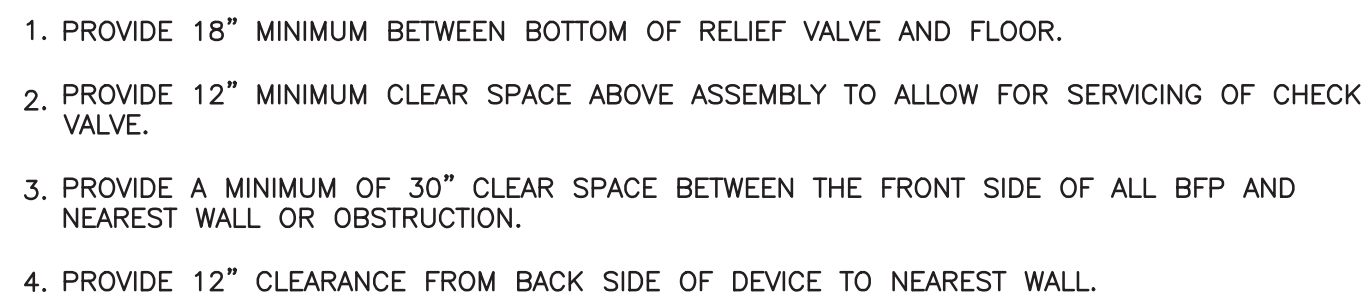
**1 PLUMBING DOMESTIC WATER FLOOR PLAN**  
SCALE: 1/8"=1'-0"

UNAUTHORIZED ALTERATION OR ADDITION TO THIS DOCUMENT IS A VIOLATION OF SECTION 209 SUBDIVISION 2 OF THE NEW YORK STATE EDUCATION LAW

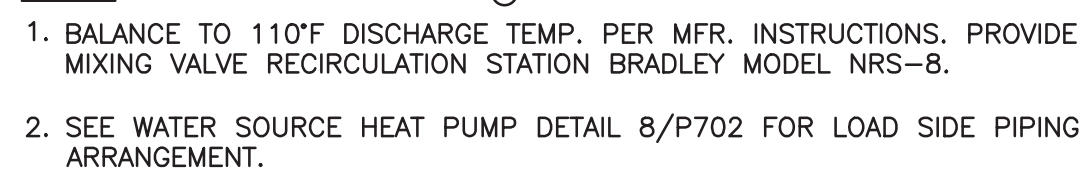








N.T.S.



N.T.S.



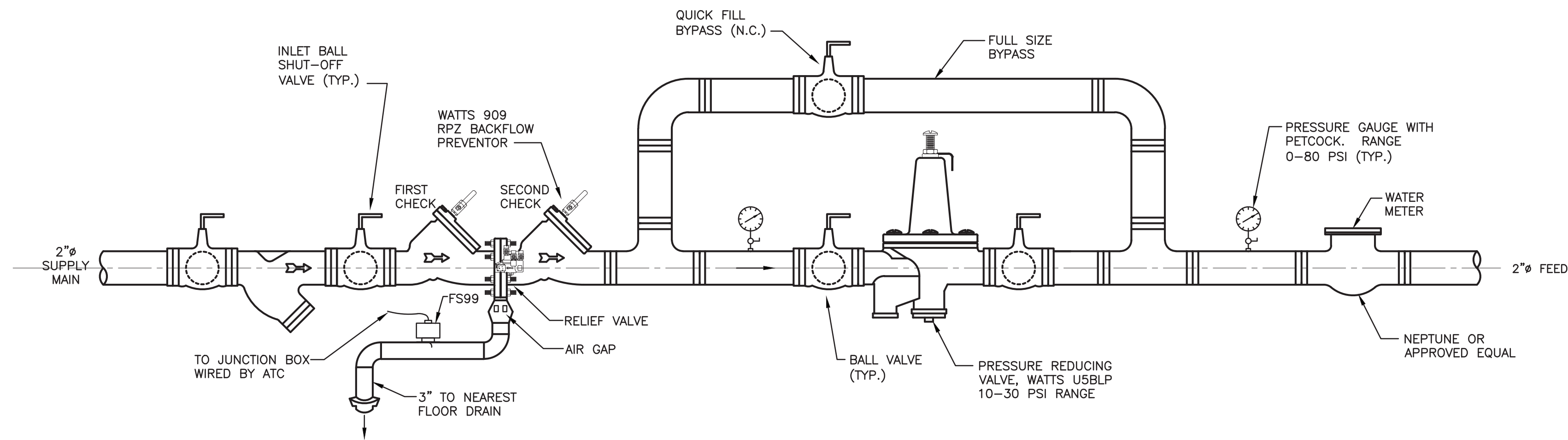
N.T.S.



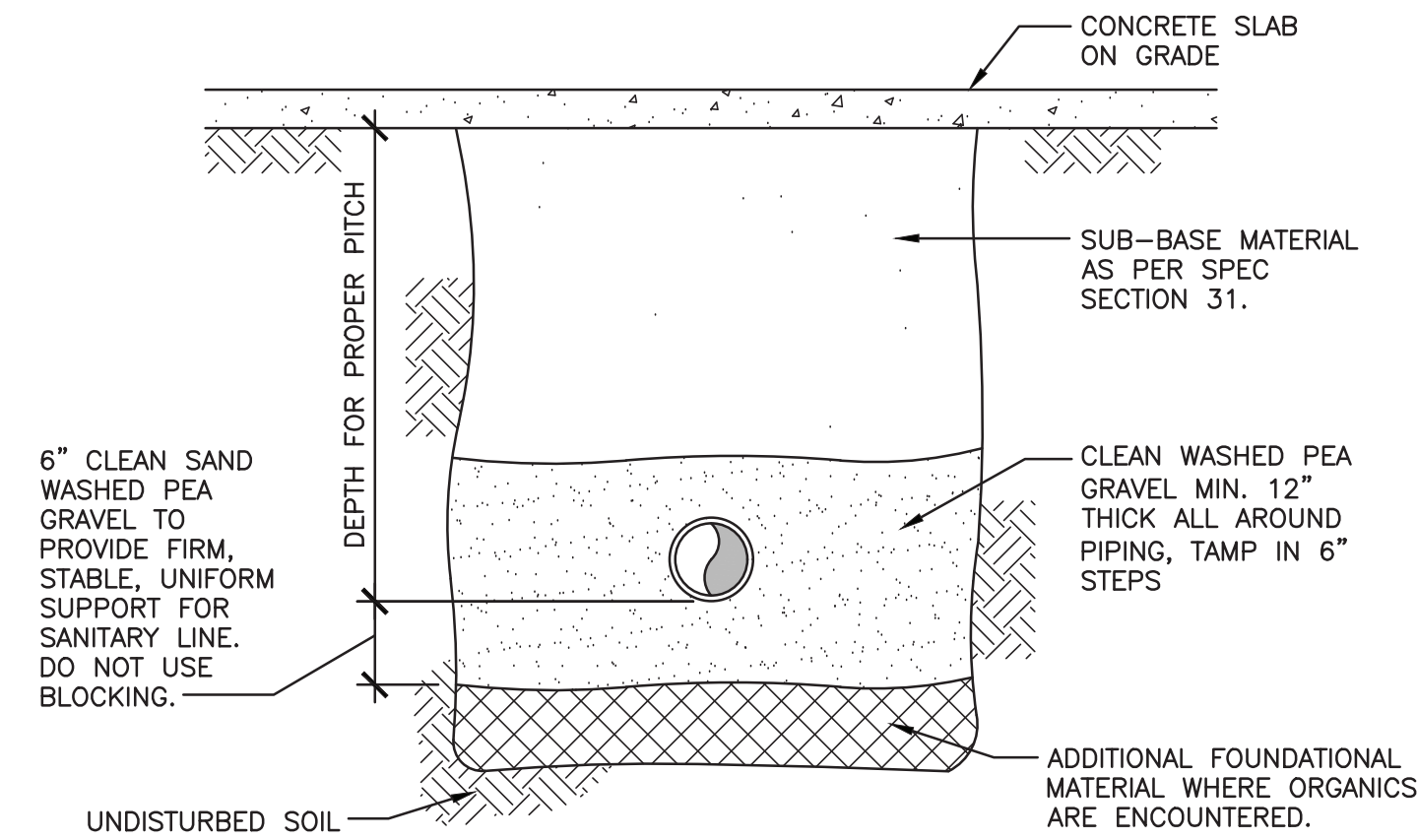
9) N.T.S.

# P701

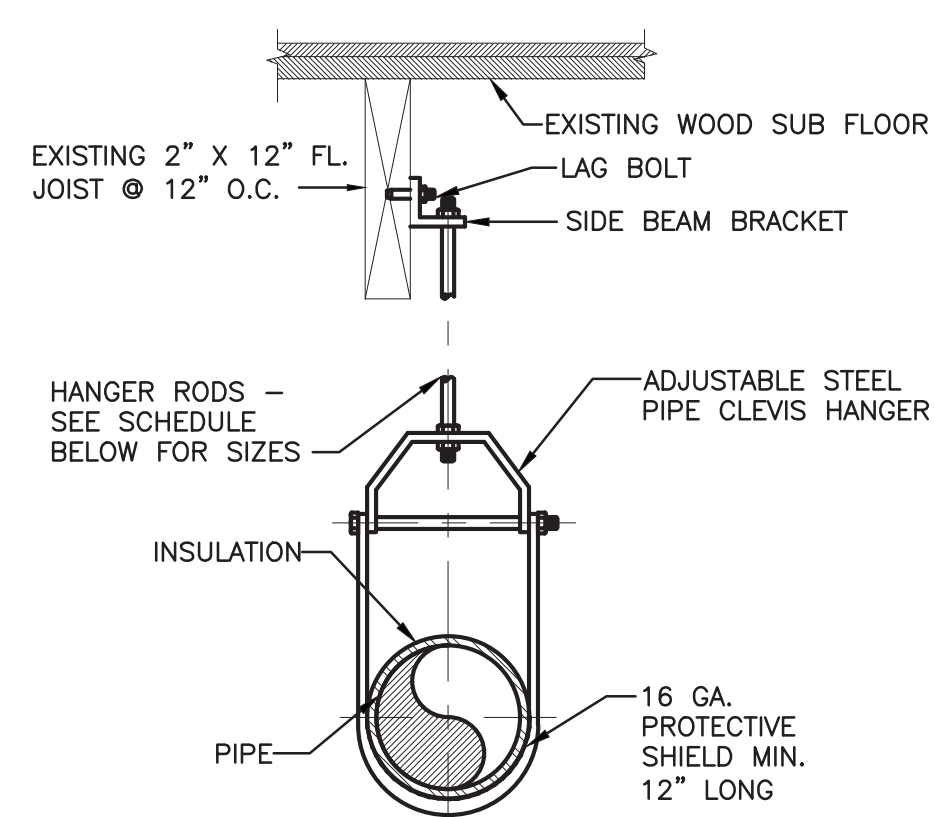




**1 HVAC HYDRONIC SYSTEM COLD WATER FILL DETAIL**  
N.T.S.

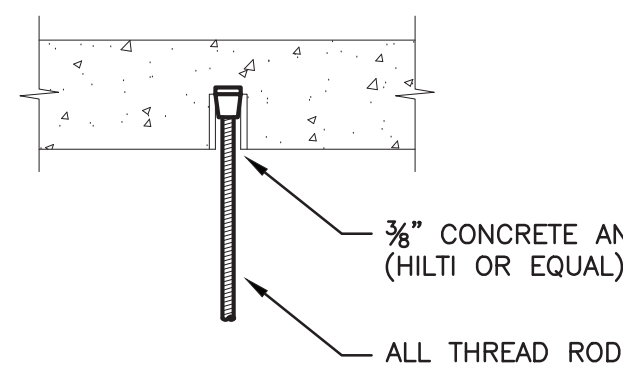


**2 TYPICAL SANITARY AND STORM DRAINAGE LINE BELOW SLAB DETAIL**  
N.T.S.

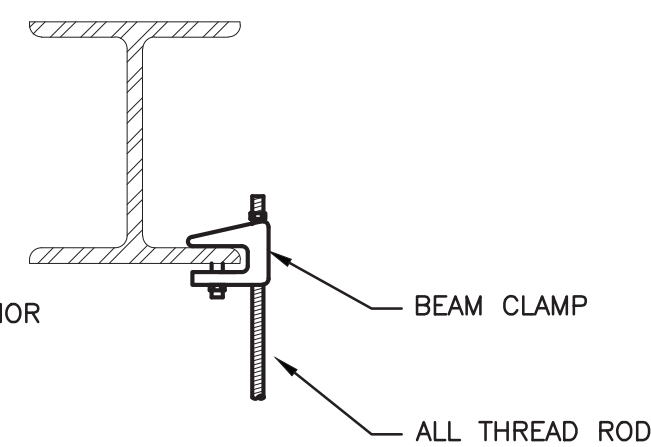


**SIDEBEAM HANGER DETAIL**

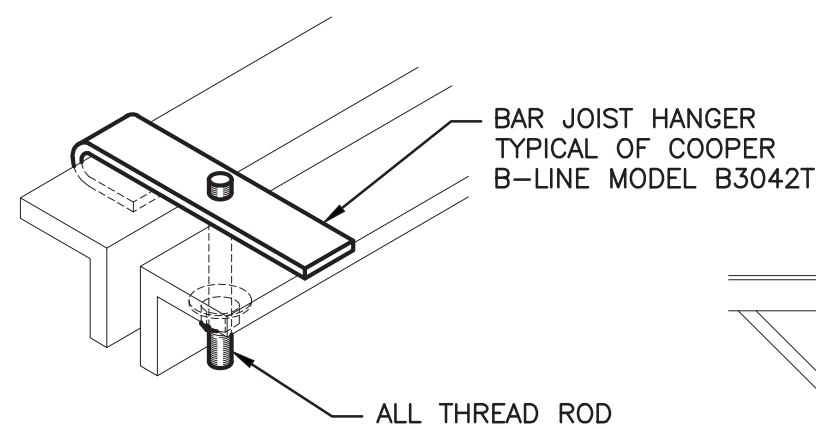
HANGER RODS AND VIB. ISOLATORS SCHEDULE		MASON INDUSTRIES AS STANDARD	
PIPE SIZE	ROD SIZE	VIBRATION ISOLATOR SIZE	
3/4" THRU 1 1/4" DIA.	3/8"	HS-A-45	
1 1/2" through 2" DIA.	3/8"	HS-A-75	
2 1/2" DIA.	1/2"	HS-A-125	
3" DIA.	1/2"	HS-A-200	
4" DIA.	5/8"	HS-A-200	



**CONCRETE DECK HANGER DETAIL**

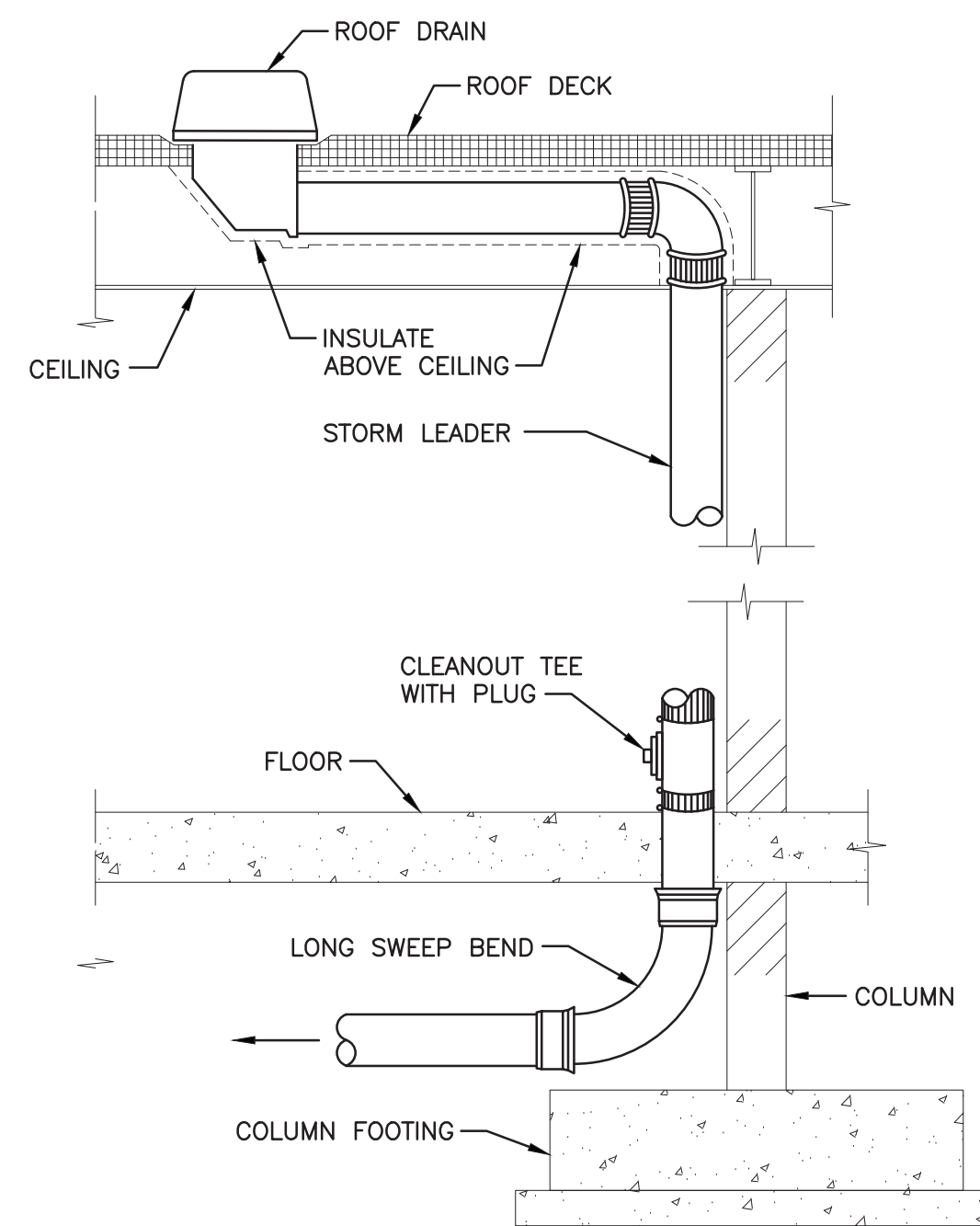


**BEAM CLAMP HANGER DETAIL**

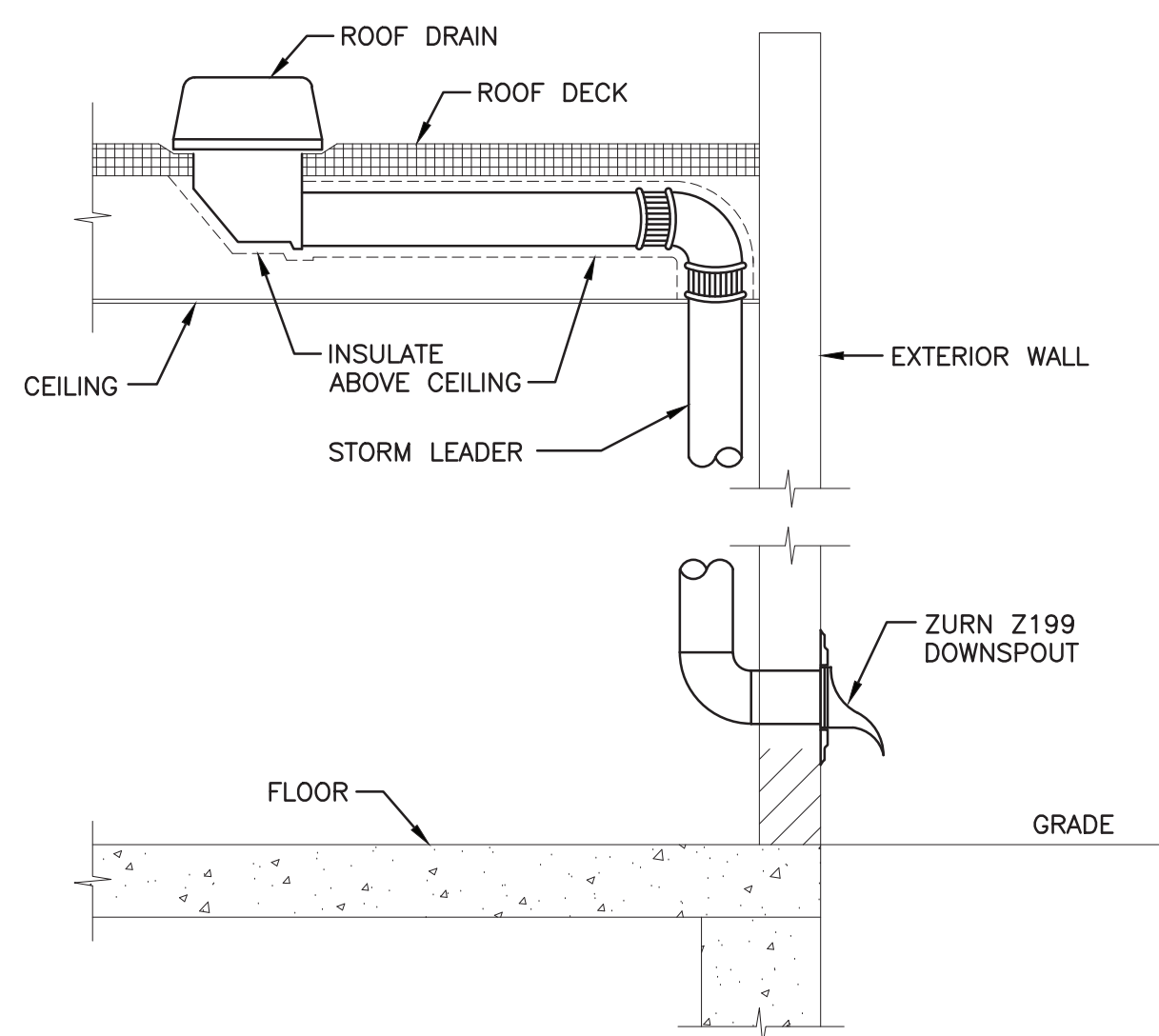


**BAR JOIST HANGER DETAIL**

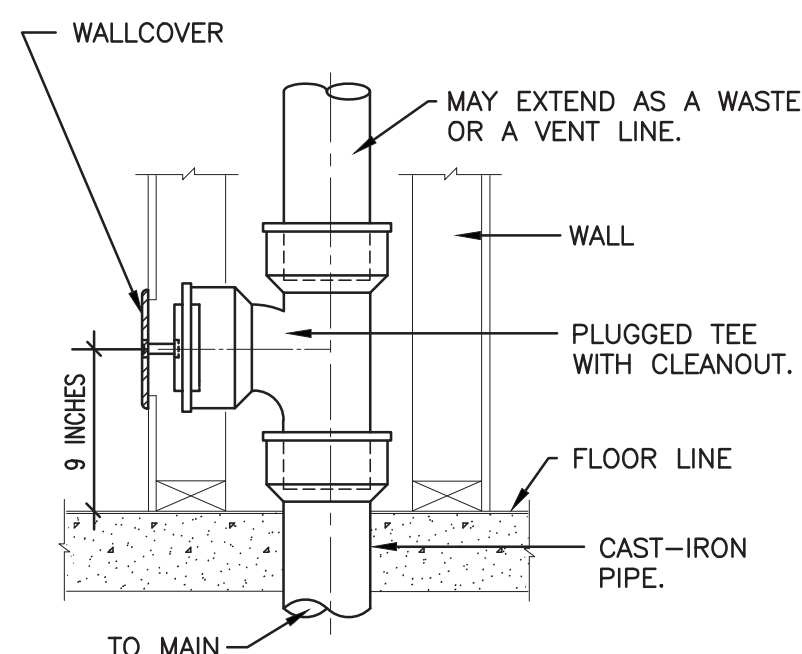
**3 TYPICAL PIPE HANGER DETAILS**  
N.T.S.



**4 TYPICAL STORM LEADER DETAIL**  
N.T.S.

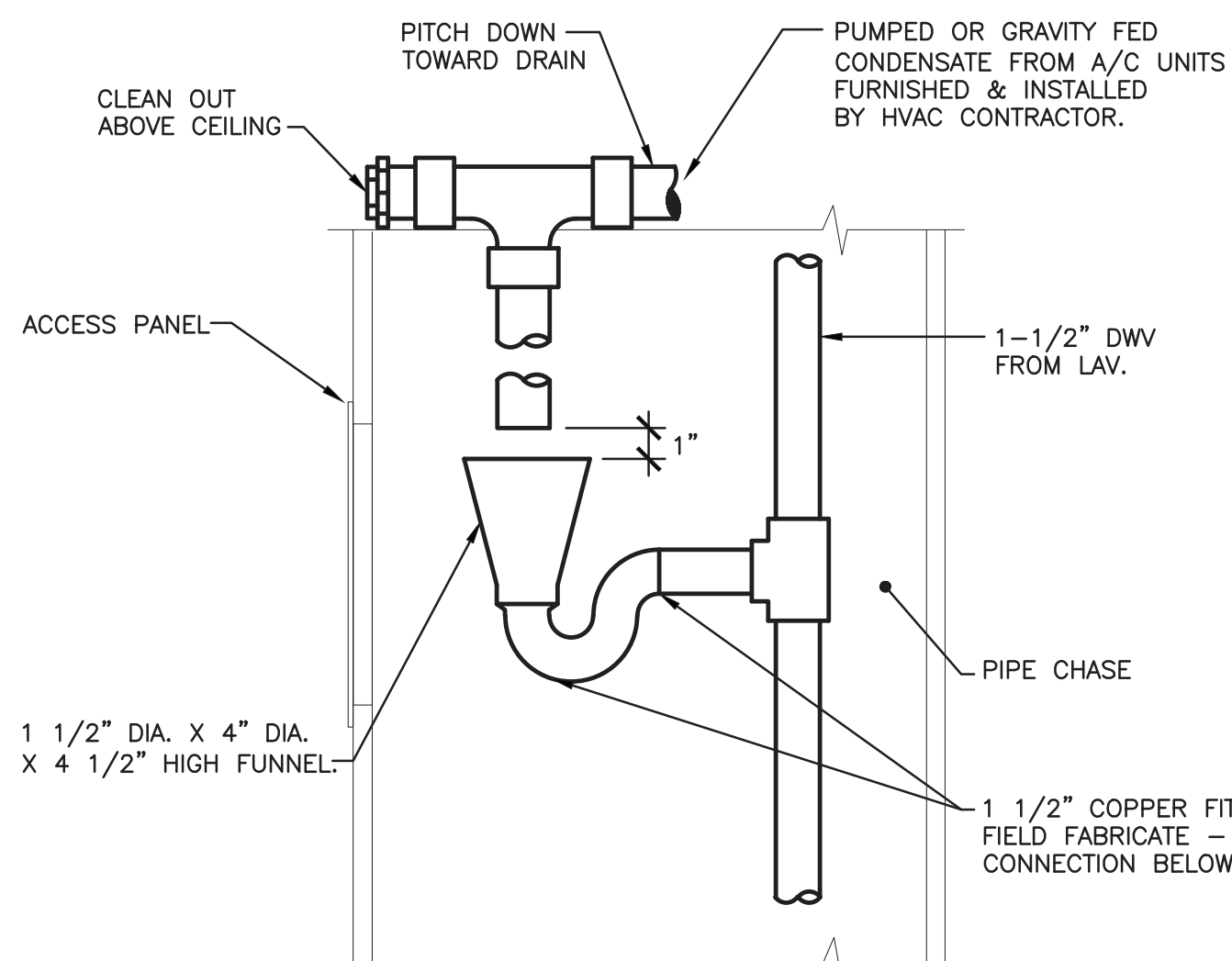


**5 TYPICAL STORM OVERFLOW LEADER DETAIL**  
N.T.S.

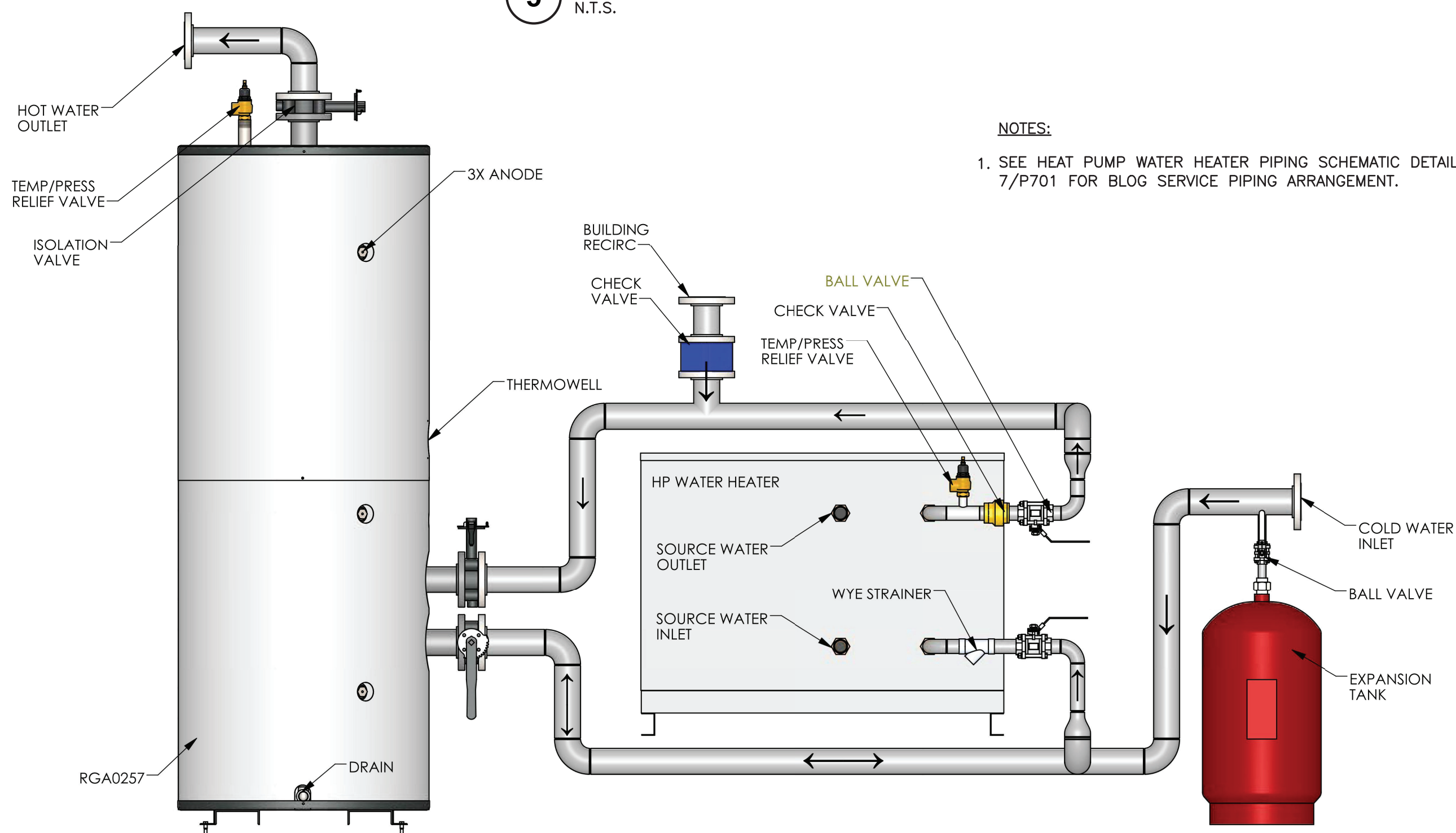


ROUND: ZURN Z-1446  
(T, PLUG & ROUND COVER)  
SQUARE: ZURN Z-1447  
(T, PLUG & SQUARE ACCESS PANEL)

**6 WALL CLEANOUT DETAIL**  
N.T.S.



**7 FUNNEL DRAIN DETAIL**  
N.T.S.



NOTES:  
1. SEE HEAT PUMP WATER HEATER PIPING SCHEMATIC DETAIL 7/P701 FOR BLOG SERVICE PIPING ARRANGEMENT.

**8 WATER SOURCE HEAT PUMP WATER HEATER PIPING ARRANGEMENT**  
N.T.S.

REVISION SCHEDULE		DESCRIPTION		DATE	
#					

SEAL DANIEL STEINBERG, P.E. 		COST CONSULTANT STUART LYNN COMPANY 800 Troy Squareway Road Suite 100, Troy, NY 12180 (518) 462-5470 www.stuartlynn.com		FF&E CONSULTANT LIT/SECURITY CONSULTANT CIVIL CONSULTANT ME/P CONSULTANT FORENSIC CONSULTANT HYMAN HAYES ASSOCIATES 800 Troy Squareway Road Suite 100, Troy, NY 12180 (518) 462-5470 www.hymanhayes.com	
ARCHITECT/STRUCTURAL ENGINEER HYMAN HAYES ASSOCIATES 800 Troy Squareway Road Suite 100, Troy, NY 12180 (518) 462-5470 www.hymanhayes.com		CLASS CONTRACT INTERIORS LLC "HYMAN HAYES ASSOCIATES" Fuses Engineering & Land Surveying PC FELLENER III crime lab design		PROJECT # 20-333 ORANGE COUNTY, NEW YORK	

SHEET TITLE <b>PLUMBING DETAILS</b>		ORANGE COUNTY MEDICAL EXAMINER'S OFFICE 22 WELLS FARM RD. GOSHEN, NY 10924	
DATE	SCALE	DRAWN BY	CHECKED BY
11/18/2022	AS SHOWN	ZR	DSS
			MDP
			20071
			NO.
			CLIENT PROJ. NO.

SHEET NUMBER

**P702**