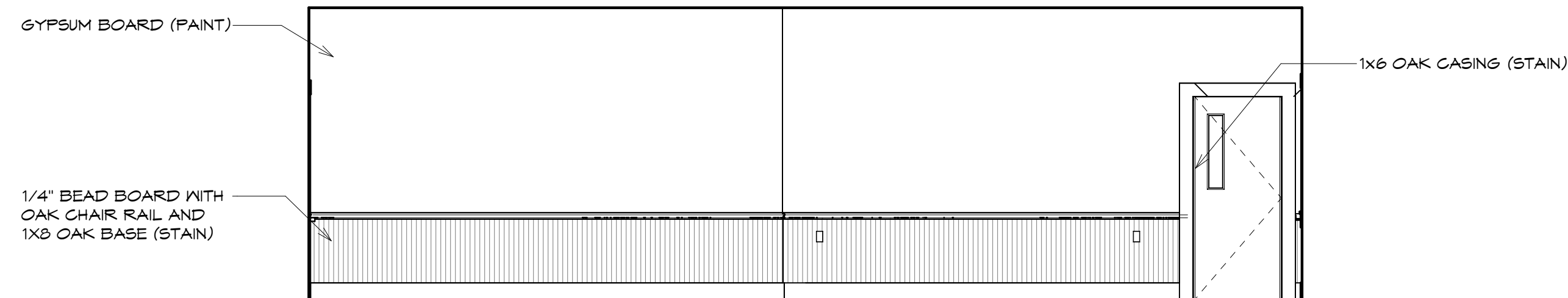
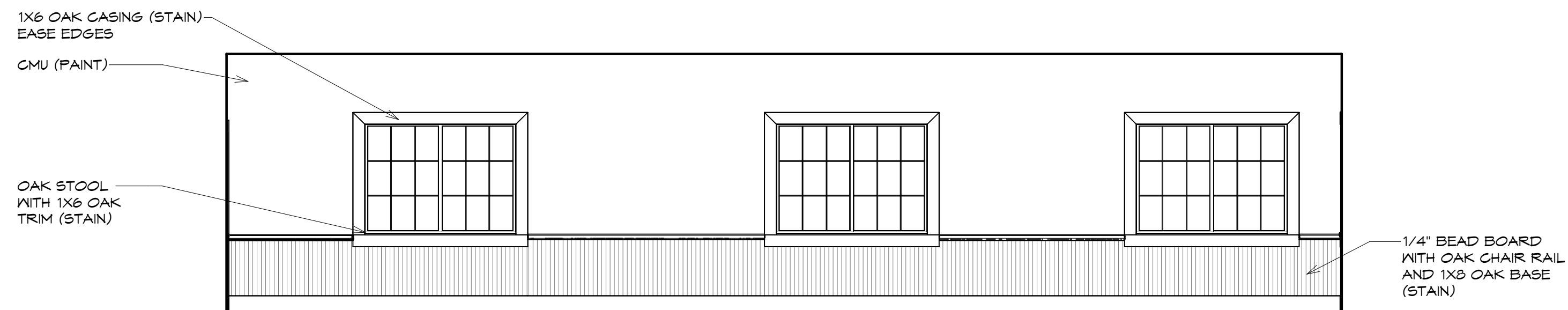


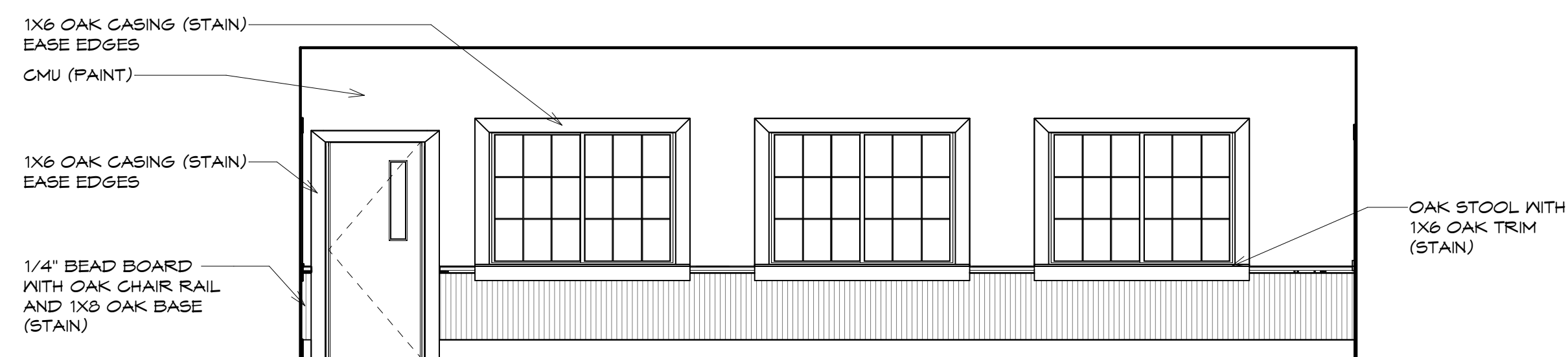
1 INTERIOR ELEVATION
A601 1/4" = 1'-0"
COMMUNITY ROOM 114 NORTH



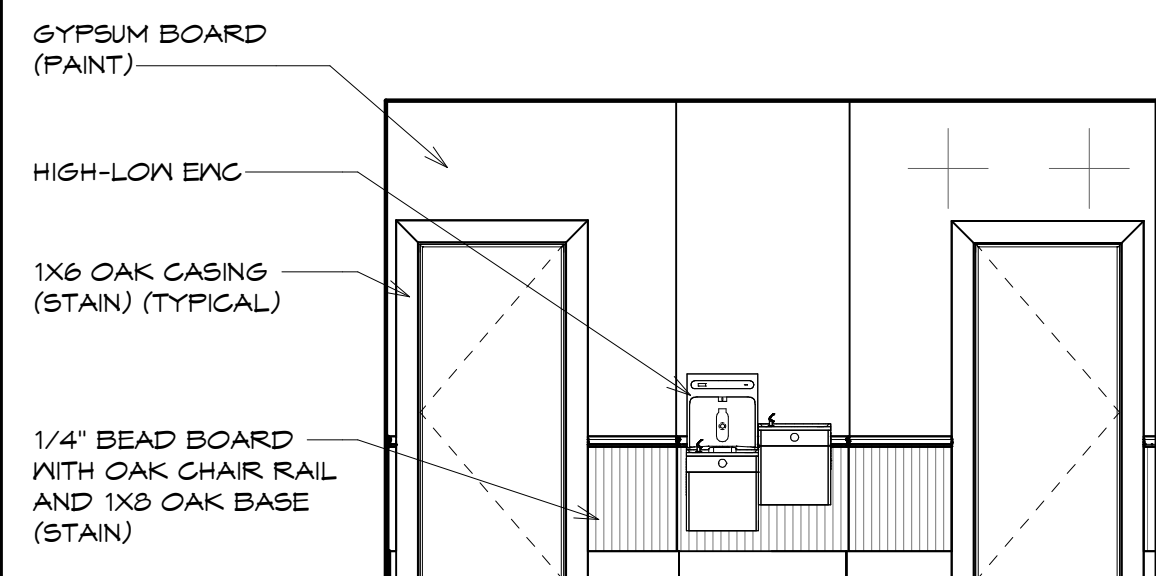
2 INTERIOR ELEVATION
A601 1/4" = 1'-0"
COMMUNITY ROOM 114 EAST



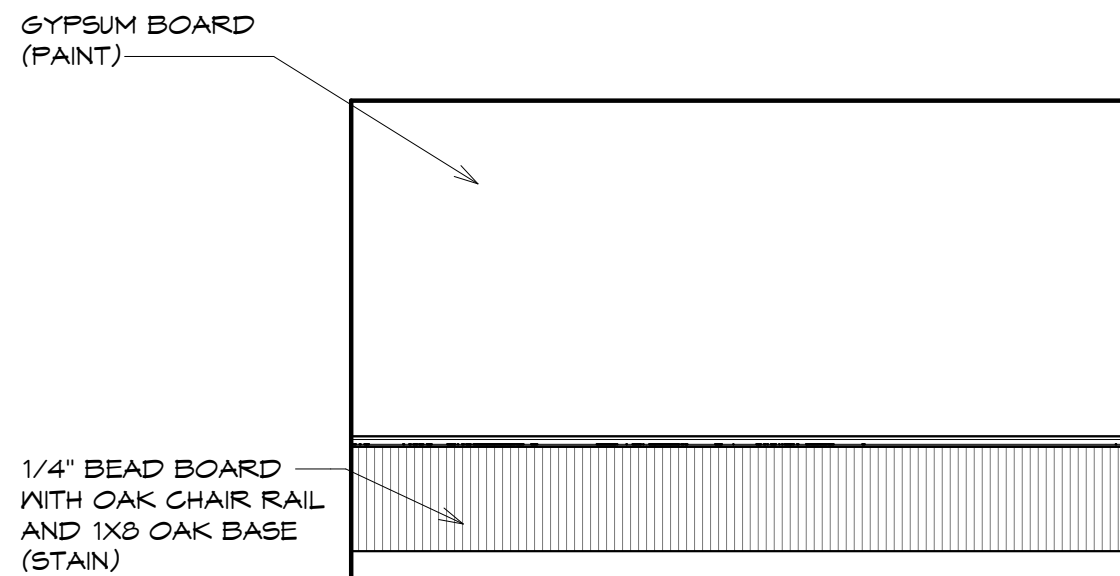
3 INTERIOR ELEVATION
A601 1/4" = 1'-0"
COMMUNITY ROOM 114 SOUTH



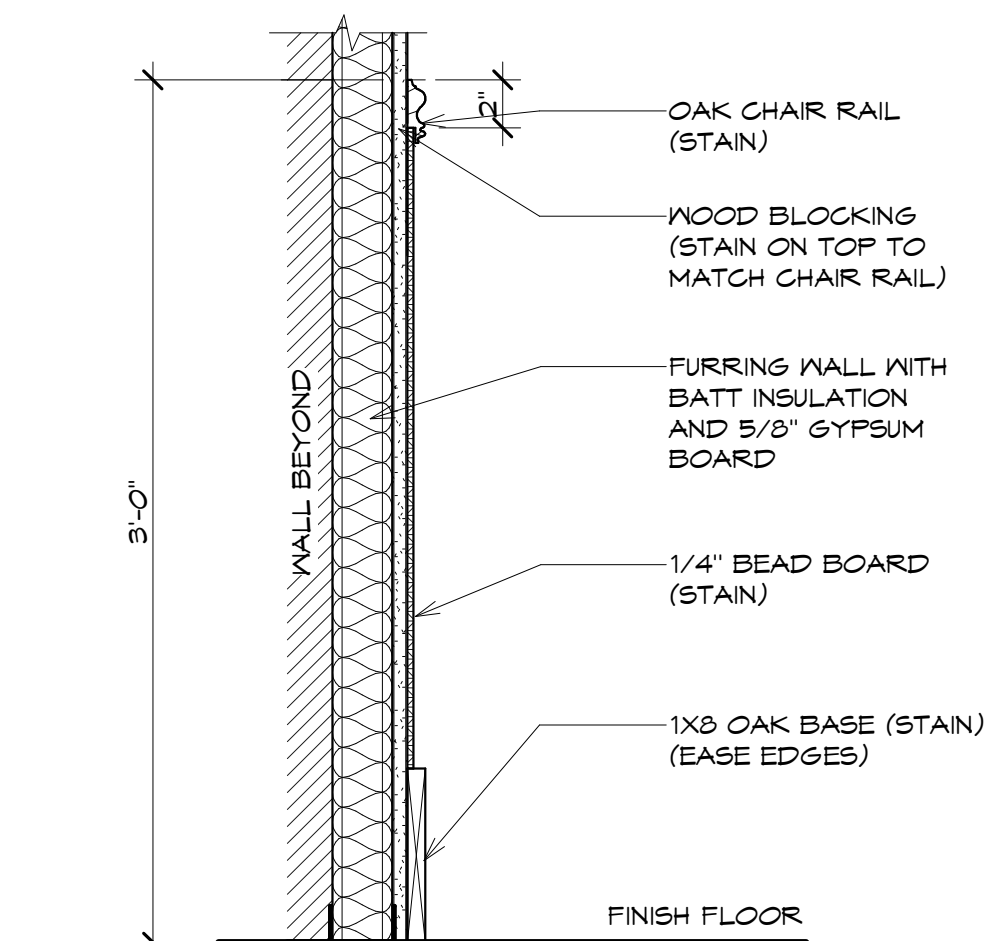
4 INTERIOR ELEVATION
A601 1/4" = 1'-0"
COMMUNITY ROOM 114 WEST



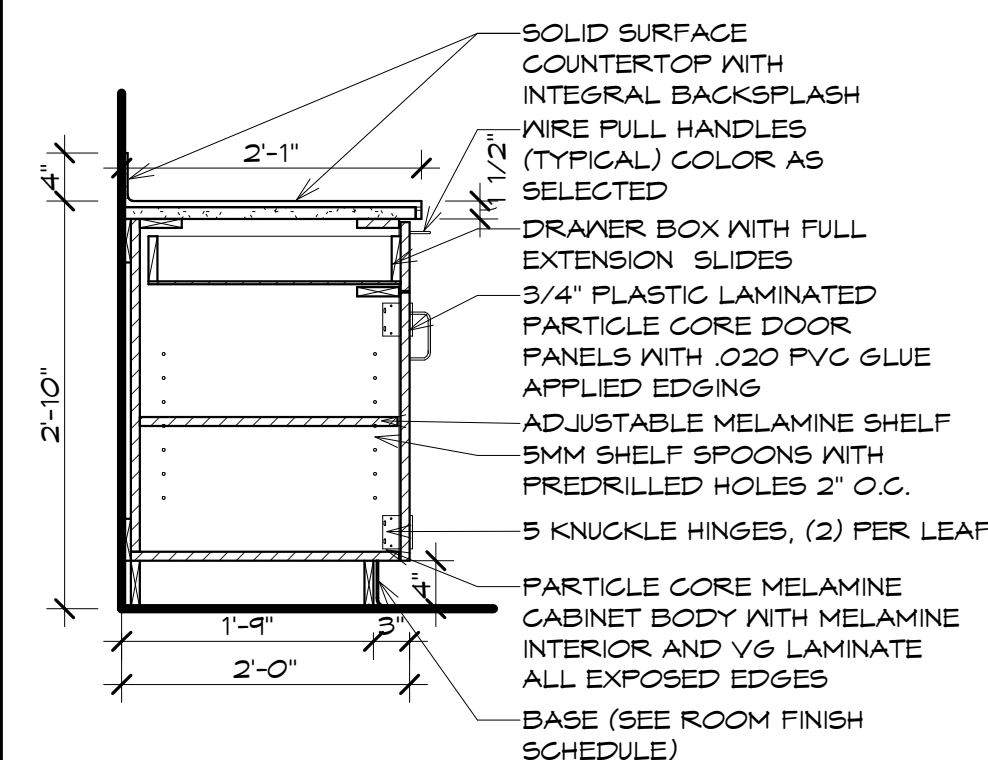
5 INTERIOR ELEVATION
A601 1/4" = 1'-0"
CORRIDOR 115 EAST



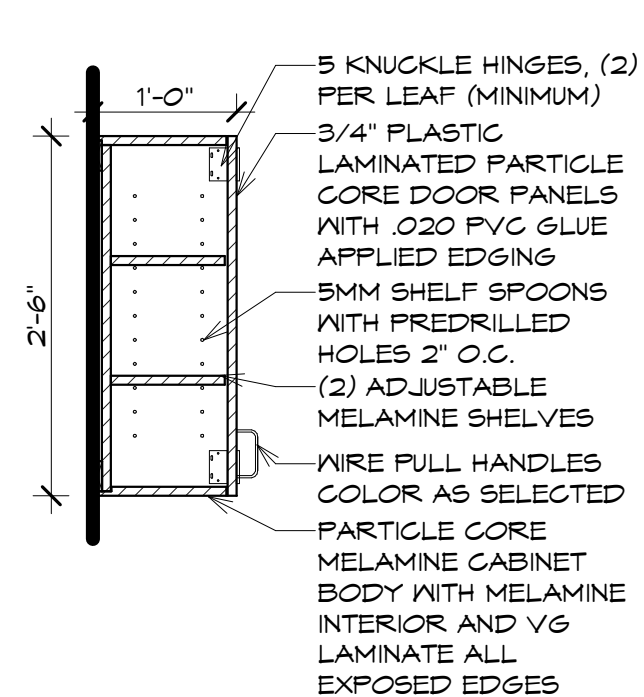
6 INTERIOR ELEVATION
A601 1/4" = 1'-0"
CORRIDOR 115 WEST



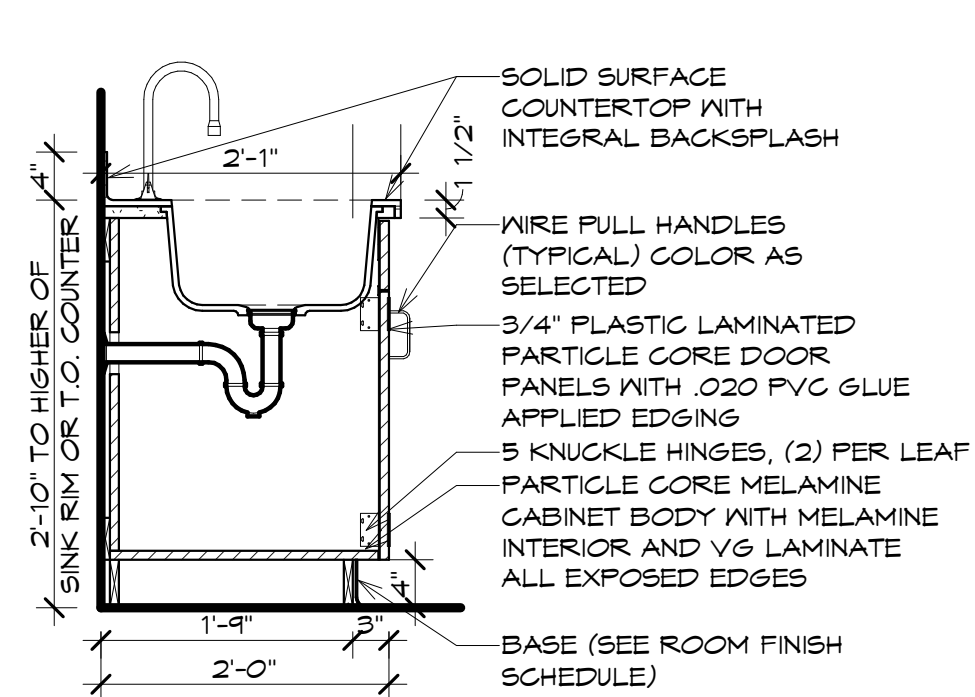
7 DETAIL
A601 1 1/2" = 1'-0"
WAINSCOT (TYPICAL)



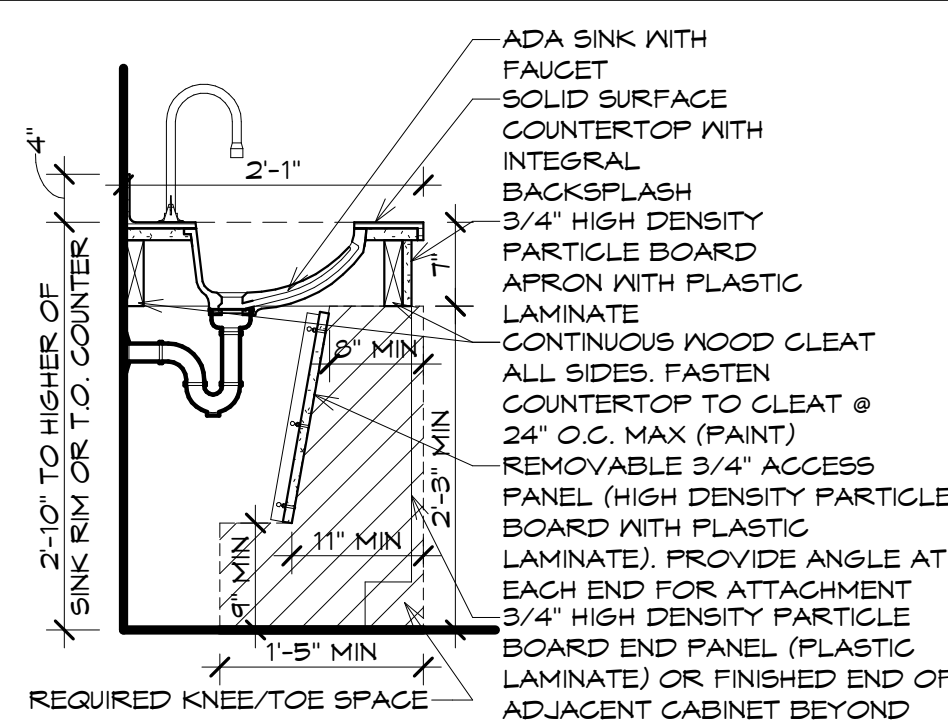
8 SECTION
A601 3/4" = 1'-0"
TYPICAL BASE CABINET



9 SECTION
A601 3/4" = 1'-0"
TYPICAL WALL CABINET



10 SECTION
A601 3/4" = 1'-0"
SINK BASE CABINET



11 SECTION
A601 3/4" = 1'-0"
ADA SINK BASE

BID PLANS

DATE: 6/9/2023
DRAWN BY: Author
SCALE: As Indicated
REVIEWED BY: Approver
PROJECT NO.: 21-2343
FILE:



NO.	DATE	DESCRIPTION

PORT EMEN FIRE DEPARTMENT,
ULSTER, NEW YORK

INTERIOR ELEVATION AND CASEWORK
SECTIONS

SHEET:
A601

WARNING: IT IS A VIOLATION OF NEW YORK EDUCATION LAW SECTION 7202.2, FOR ANY PERSON, UNLESS HE IS ACTING UNDER THE DIRECTION OF A LICENSED PROFESSIONAL ENGINEER OR LAND SURVEYOR, TO ALTER THIS DOCUMENT IN ANY WAY. IF ALTERED, THE ALTERED PERSON SHALL COMPLY WITH THE REQUIREMENTS OF NEW YORK EDUCATION LAW SECTION 7202.2.