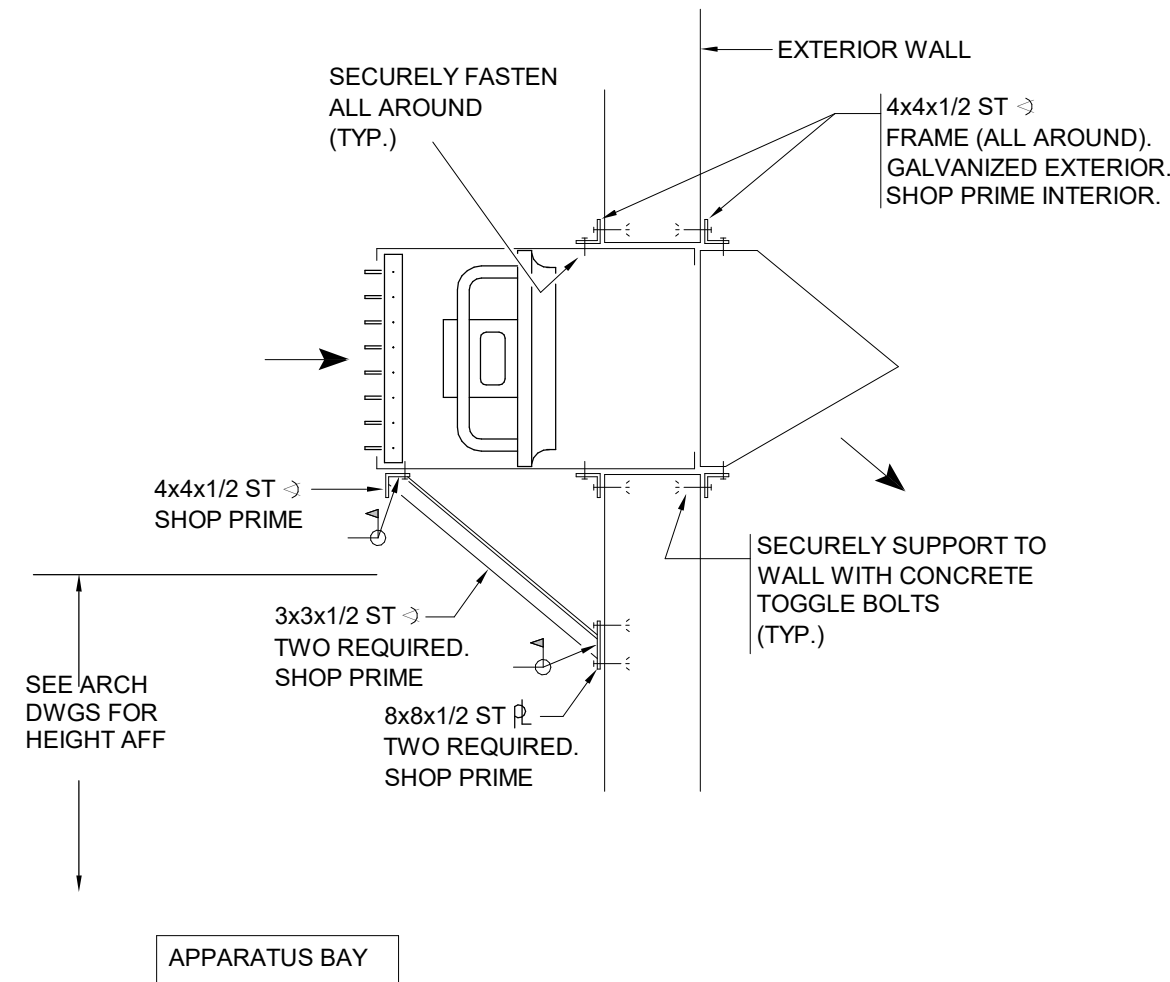





- ### KEYED NOTES
- CLOTHES DRYER EXHAUST (4"ø)
- DUCT SHALL BE CONSTRUCTED OF MIN. 26 GAGE RIGID METAL, HAVING SMOOTH INTERIOR SURFACES WITH JOINTS RUNNING IN THE DIRECTION OF AIRFLOW. SHALL NOT BE CONNECTED WITH SHEET-METAL SCREWS OR FASTENING MEANS WHICH EXTEND INTO THE DUCT.
- TERMINATE WITH WALL CAP (BROAN MODEL WC650 OR EQUAL) WITH ALUMINUM PIPE AND COLLAR. TRANSITION DUCTWORK AS REQUIRED. CAP SHALL BE PRIMED AND PAINTED. ARCHITECT SHALL SELECT COLOR.
- TERMINATION SHALL BE A MINIMUM OF 3-FEET FR. ANY OPERABLE WINDOW. FIELD DETERMINE EXACT LOCATION.
 - HOOD SUPPLY PLENUM
- FURNISHED AND INSTALLED BY KITCHEN VENDOR. MECHANICAL CONTRACTOR TO MAKE DUCT TRANSITION TO HOOD AS REQ'D.
 - EXHAUST HOOD
- FURNISHED AND INSTALLED BY KITCHEN VENDOR.
 - 16"ø GREASE DUCT FROM HOOD BELOW TO KEF-1 ON ROOF ABOVE. TRANSITION AS REQUIRED FOR CONNECTIONS. SEE SECTION 23 51 01.



WALL LOUVERED EXHAUST FAN DETAIL

BID PLANS

DATE: 06/21/2023	DRAWN BY: AOS	SCALE: 1/8" = 1' - 0"	REVIEWED BY: TJH	PROJECT NO.: 20-2006	FILE:
					
					
					
REVISIONS					
NO.	DATE	DESCRIPTION			
1	Date 1	Revision 1			
PORT EWEN FIRE DEPARTMENT, ULSTER, NEW YORK					
HVAC PLAN - FIRST FLOOR					
SHEET: M101					