

DOORWAY REQUIREMENTS

404 Doors, Doorways, and Gates

**404.1 General.** Doors, doorways, and gates that are part of an *accessible* route shall comply with 404.

**EXCEPTION:** Doors, doorways, and gates designed to be operated only by security personnel shall not be required to comply with 404.2.7, 404.2.8, 404.2.9, 404.3.2 and 404.3.4 through 404.3.7.

**404.2 Manual Doors, Doorways, and Manual Gates.** Manual doors and doorways and manual gates intended for user passage shall comply with 404.2.

**404.2.1 Revolving Doors, Gates, and Turnstiles.** Revolving doors, revolving gates, and turnstiles shall not be part of an *accessible* route.

**404.2.2 Double-Leaf Doors and Gates.** At least one of the active leaves of doorways with two leaves shall comply with 404.2.3 and 404.2.4.

**404.2.3 Clear Width.** Door openings shall provide a clear width of 32 inches (815 mm) minimum. Clear openings of doorways with swinging doors shall be measured between the face of the door and the stop, with the door open 90 degrees. Openings more than 24 inches (610 mm) deep shall provide a clear opening of 36 inches (915 mm) minimum. There shall be no projections into the required clear opening width lower than 34 inches (865 mm) above the finish floor or ground. Projections into the clear opening width between 34 inches (865 mm) and 80 inches (2030 mm) above the finish floor or ground shall not exceed 4 inches (100 mm).

**EXCEPTIONS:** 1. In *alterations*, a projection of 5/8 inch (16 mm) maximum into the required clear width shall be permitted for the latch side stop.

2. Door closers and door stops shall be permitted to be 78 inches (1980 mm) minimum above the finish floor or ground.

**404.2.4 Maneuvering Clearances.** Minimum maneuvering clearances at doors and gates shall comply with 404.2.4. Maneuvering clearances shall extend the full width of the doorway and the required latch side or hinge side clearance.

**EXCEPTION:** Entry doors to hospital patient rooms shall not be required to provide the clearance beyond the latch side of the door.

**404.2.4.1 Swinging Doors and Gates.** Swinging doors and gates shall have maneuvering

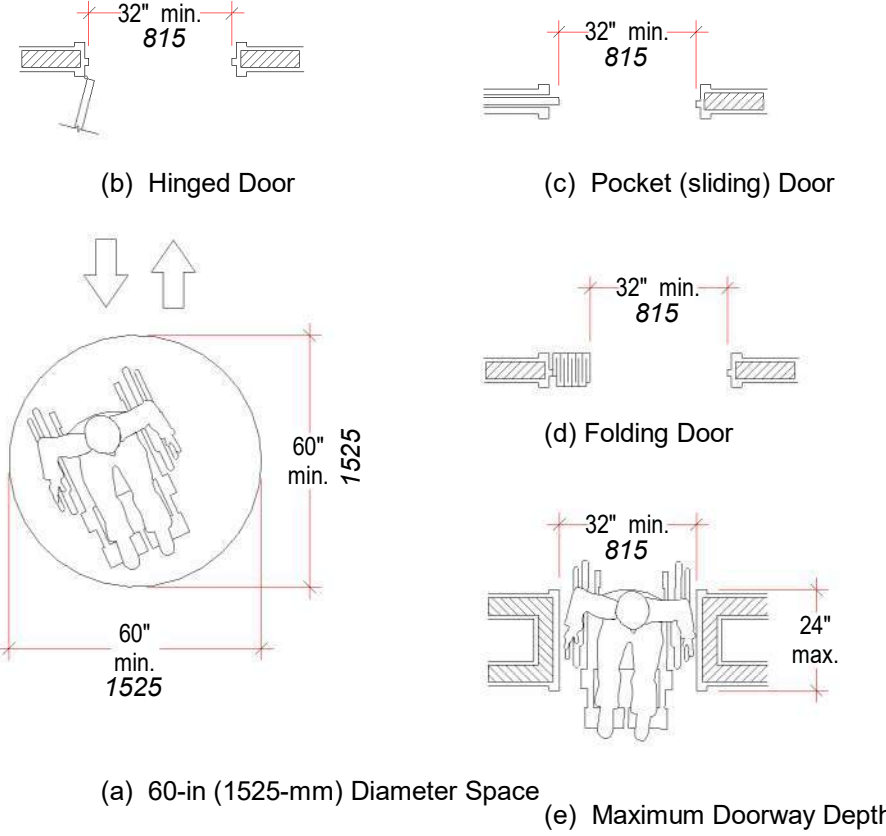
**404.2.4.3 Recessed Doors and Gates.** Maneuvering clearances for forward approach shall be provided when any obstruction within 18 inches (455 mm) of the latch side of a doorway projects more than 8 inches (205 mm) beyond the face of the door, measured perpendicular to the face of the door or gate.

**404.2.4.4 Floor or Ground Surface.** Floor or ground surface within required maneuvering clearances shall comply with 302. Changes in level are not permitted.

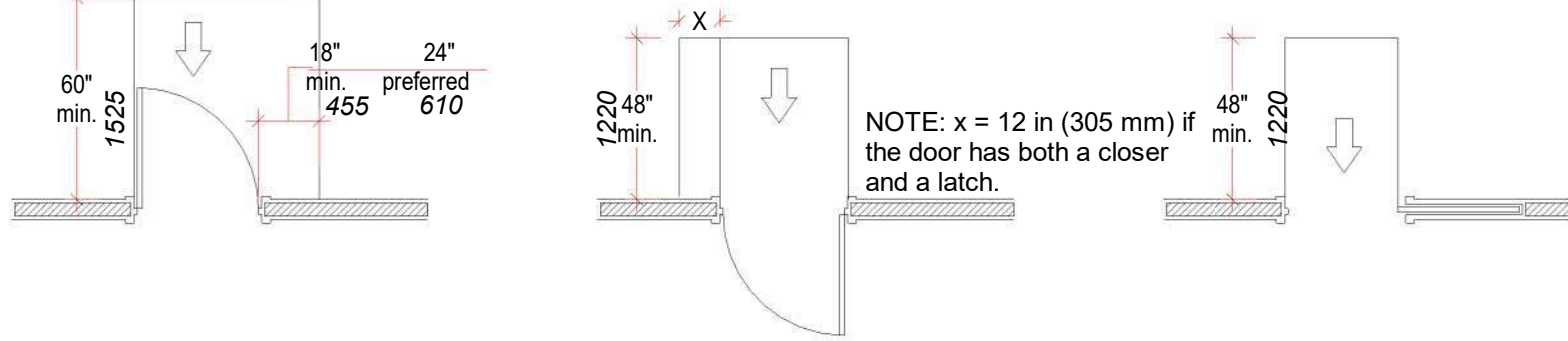
**EXCEPTIONS:** 1. Slopes not steeper than 1:48 shall be permitted.

2. Changes in level at thresholds complying with 404.2.5 shall be permitted.

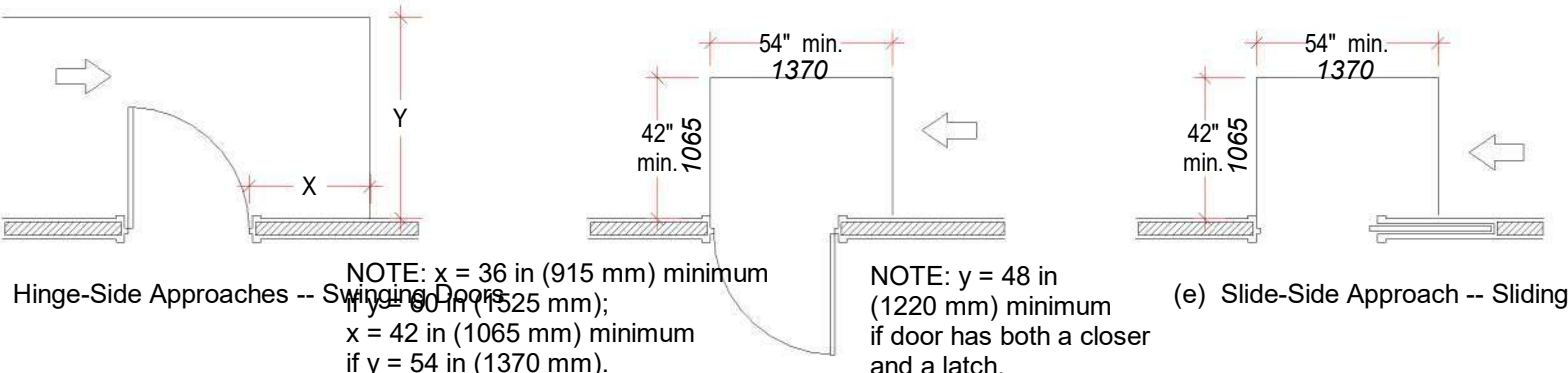
**404.2.5 Thresholds.** Thresholds, if provided at doorways, shall be 1/2 inch (13 mm) high maximum. Raised thresholds and changes in level at doorways shall comply with 302 and 303.



PUSH SIDE



PULL SIDE



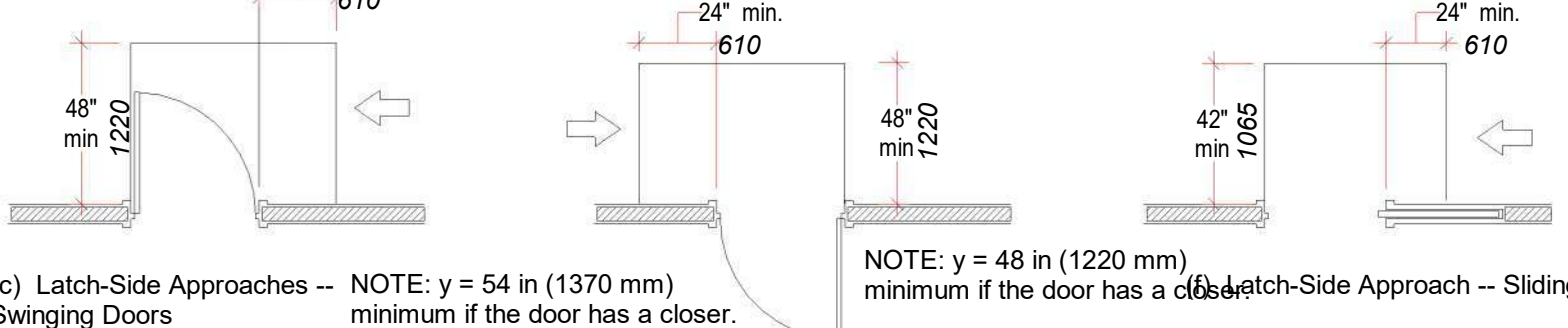
PUSH SIDE

NOTE: x = 36 in (915 mm) minimum if y = 42 in (1065 mm) minimum; x = 42 in (1065 mm) minimum if y = 54 in (1370 mm).

NOTE: y = 48 in (1220 mm) minimum if door has both a closer and a latch.

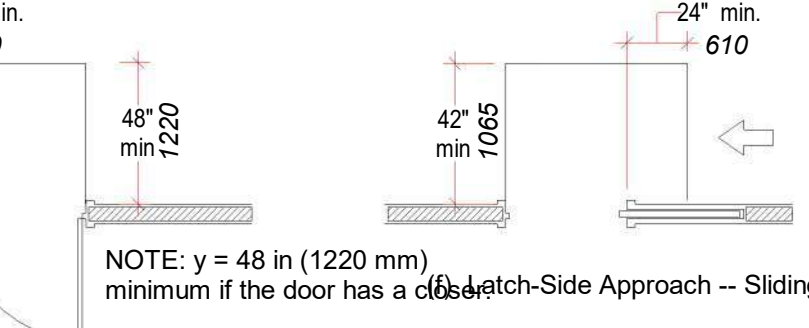
(e) Slide-Side Approach -- Sliding Doors & Folding Doors

PULL SIDE



(c) Latch-Side Approaches -- Swinging Doors

PUSH SIDE



(e) Latch-Side Approach -- Sliding Doors & Folding Doors

**404.2.6 Doors in Series and Gates in Series.** The distance between two hinged or pivoted doors in series and gates in series shall be 48 inches (1220 mm) minimum plus the width of doors or gates swinging into the space.

**404.2.7 Door and Gate Hardware.** Handles, pulls, latches, locks, and other *operable parts* on doors and gates shall comply with 309.4. *Operable parts* of such hardware shall be 34 inches (865 mm) minimum and 48 inches (1220 mm) maximum above the finish floor or ground. Where sliding doors are in the fully open position, operating hardware shall be exposed and usable from both sides.

**404.2.8 Closing Speed.** Door and gate closing speed shall comply with 404.2.8.

**404.2.8.1 Door Closers and Gate Closers.** Door closers and gate closers shall be adjusted so that from an open position of 90 degrees, the time required to move the door to a position of 12 degrees from the latch is 5 seconds minimum.

**404.2.8.2 Spring Hinges.** Door and gate spring hinges shall be adjusted so that from the open position of 70 degrees, the door or gate shall move to the closed position in 1.5 seconds minimum.

**404.2.9 Door and Gate Opening Force.** Fire doors shall have a minimum opening force allowable by the appropriate *administrative authority*. The force for pushing or pulling open a door or gate other than fire doors shall be as follows:

1. Interior hinged doors and gates: 5 pounds (22.2 N) maximum.

2. Sliding or folding doors: 5 pounds (22.2 N) maximum.

These forces do not apply to the force required to retract latch bolts or disengage other devices that hold the door or gate in a closed position.

**404.2.10 Door and Gate Surfaces.** Swinging door and gate surfaces within 10 inches (255 mm) of the finish floor or ground measured vertically shall have a smooth surface on the push side extending the full width of the door or gate. Parts creating horizontal or vertical joints in these surfaces shall be within 1/16 inch (1.6 mm) of the same plane as the other. Cavities created by added kick plates shall be capped.

**404.2.11 Vision Lights.** Doors, gates, and side lights adjacent to doors or gates, containing one or more glazing panels that permit viewing through the panels shall have the bottom of at least one glazed panel located 43 inches (1090 mm) maximum above the finish floor.

**EXCEPTION:** Vision lights with the lowest part more than 66 inches (1675 mm) from the finish floor or ground shall not be required to comply with 404.2.11.

**404.3 Automatic and Power-Assisted Doors and Gates.** Automatic doors and automatic gates shall comply with 404.3. Full-powered automatic doors shall comply with ANSI/BHMA A156.10 (incorporated by reference, see "Referenced Standards" in Chapter 1). Low-energy and power-assisted doors shall comply with ANSI/BHMA A156.19 (1997 or 2002 edition) (incorporated by reference, see "Referenced Standards" in Chapter 1).

**404.3.1 Clear Width.** Doorways shall provide a clear opening of 32 inches (815 mm) minimum in power-on and power-off mode. The minimum clear width for automatic door systems in a doorway shall be based on the clear opening provided by all leaves in the open position.

**404.3.2 Maneuvering Clearance.** Clearances at power-assisted doors and gates shall comply with 404.2.4. Clearances at automatic doors and gates without standby power and serving an *accessible* means of egress shall comply with 404.2.4.

**EXCEPTION:** Where automatic doors and gates remain open in the power-off condition, compliance with 404.2.4 shall not be required.

**404.3.3 Thresholds.** Thresholds and changes in level at doorways shall comply with 404.2.5.

**404.3.4 Doors in Series and Gates in Series.** Doors in series and gates in series shall comply with 404.2.6.

**404.3.5 Controls.** Manually operated controls shall comply with 309. The clear floor space adjacent to the control shall be located beyond the arc of the door swing.

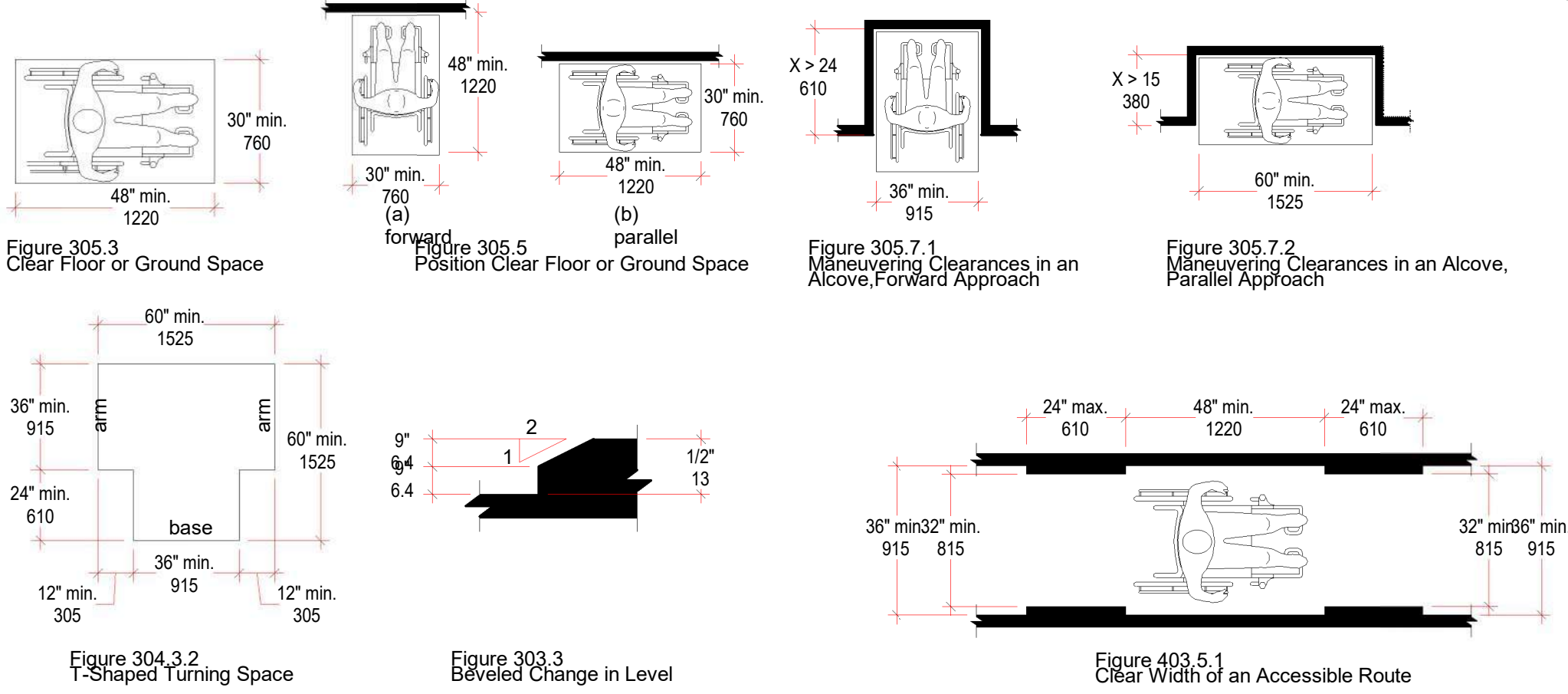
**404.3.6 Break Out Opening.** Where doors and gates without standby power are a part of a means of egress, the clear break out opening at swinging or sliding doors and gates shall be 32 inches (815 mm) minimum when operated in emergency mode.

**EXCEPTION:** Where manual swinging doors and gates comply with 404.2 and serve the same means of egress compliance with 404.3.6 shall not be required.

**404.3.7 Revolving Doors, Revolving Gates, and Turnstiles.** Revolving doors, revolving gates, and turnstiles shall not be part of an *accessible* route.

Two Hinged Doors in Series

GENERAL REQUIREMENTS



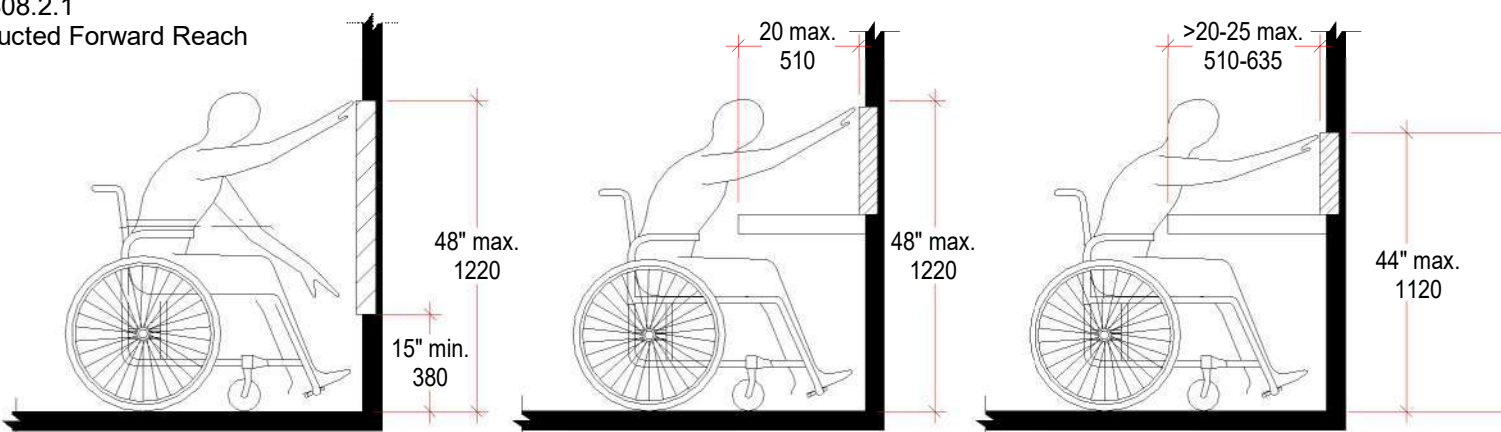
GENERAL NOTES

1. DOORS SHALL BE CAPABLE OF OPENING AT LEAST 90 DEGREES & SHALL BE SO MOUNTED THAT CLEAR WIDTH OF DOORWAY IS NOT LESS THAN 32 INCHES.
2. LATCHING & LOCKING DOORS THAT ARE HAND ACTIVATED & WHICH ARE IN THE PATH OF TRAVEL SHALL BE OPERABLE WITH A SINGLE EFFORT BY LEVER TYPE HARDWARE
3. MAXIMUM EFFORT TO OPERATE FIRE DOORS SHALL BE 15 LBS. AT OTHER INTERIOR DOORS, MAXIMUM EFFORT SHALL BE 5 LBS.
4. FLOOR, RAMP, AND TREAD SURFACES SHALL BE SLIP RESISTANT.
5. EMERGENCY WARNING SYSTEMS SHALL ACTIVATE A MEANS OF WARNING FOR THE VISUALLY IMPAIRED. FLASHING VISUAL WARNING SHALL HAVE A FREQUENCY OF NOT MORE THAN 60 FLASHES PER MINUTE.
6. THRESHOLDS SHALL NOT BE MORE THAN 1/2" HIGHER THAN ADJACENT FLOOR OR LANDING. LEVEL CHANGE BETWEEN 1/4" & 1/2" SHALL BE BEVELED WITH SLOPE NO GREATER THAN 1:2.
7. TOP OF ALARM PULL BOXES SHALL BE 4'-0" A.F.F.

THE PROJECT SHALL COMPLY WITH THE ADA STANDARDS. THE GUIDELINES NOTED HERE COMPLY WITH THE UNIFORM FEDERAL ACCESSIBILITY STANDARDS (UFAS) & THE ORIGINAL ADA ACCESSIBILITY GUIDELINES FROM JULY 1991 AND SUPPLEMENTED THROUGH SEPTEMBER 2010

**811 Storage**  
**811.1 General.** Storage shall comply with 811.  
**811.2 Clear Floor or Ground Space.** A clear floor or ground space complying with 305 shall be provided.  
**811.3 Height.** Storage *elements* shall comply with at least one of the reach ranges specified in 308.  
**811.4 Operable Parts.** *Operable parts* shall comply with 309.

Figure 308.2.1 Unobstructed Forward Reach



GENERAL NOTES

1. DO NOT SCALE MEASURE ANY DRAWING. VERIFY THE FIGURES, DIMENSIONS, AND DESIGN INTENTION SHOWN ON THE DRAWINGS BEFORE BEGINNING LAYOUT OF THE WORK AND REPORT ANY ERRORS, INACCURACIES, MISSING DIMENSIONAL REQUIREMENTS, OR CONFLICTS TO THE ARCHITECT IN WRITING BEFORE BEGINNING ANY WORK. VERIFY THE PARTITION LAYOUT SHOWN IN THE FIELD WITH THE ARCHITECT BEFORE BEGINNING NEW PARTITION WORK.
2. ALL ERRORS AND DISCREPANCIES SHALL BE BROUGHT TO THE ARCHITECT'S ATTENTION IN WRITING BEFORE PROCEEDING WITH THE WORK.
3. ALL WORK SHALL COMPLY WITH ALL APPLICABLE CODES, LAWS, AND STATUTES AS REQUIRED. STRICTLY ADHERE TO MANUFACTURER'S PRINTED INSTRUCTIONS.
5. VERIFY ALL CHANGES TO THE WORK IN WRITING WITH THE ARCHITECT AND OWNER BEFORE BEGINNING RELATED WORK.
6. VERIFY EXACT LAYOUT COMPATIBILITY WITH REQUIRED ZONING SETBACKS BEFORE BEGINNING WORK.
7. VERIFY EXACT LAYOUT COMPATIBILITY WITH ALL EXISTING CONDITIONS BEFORE BEGINNING FORM WORK. NOTIFY THE ARCHITECT IN WRITING BEFORE BEGINNING WORK IF ANY DISCREPANCIES ARE FOUND.
8. MAINTAIN ALL EXISTING FINISH GRADE ELEVATIONS AT PROPERTY LINES.
9. PROTECT EXISTING SPECIMEN TREES AND SHRUBS TO REMAIN. MOVE AND STORE OR RELOCATE TREES AND SHRUBS AFFECTED BY CONSTRUCTION DISTURBANCE ONLY THOSE AREAS OF THE SITE AFFECTED BY NEW CONSTRUCTION, UNLESS NOTED OTHERWISE PROTECT ALL OTHER AREAS.
10. PROVIDE POSITIVE DRAINAGE AWAY FROM BUILDING PERIMETER ( AND ADDITION), MINIMUM PITCH 1/4" PER FOOT.
11. DIMENSIONS NOTED AS "EQUAL" OR "EQ" WITHIN A ROOM REFER TO A DISTANCE RELATIONSHIP CONTAINED ONLY IN THAT ROOM AT AN OPPOSING OR PARALLEL WALL UNLESS NOTED OTHERWISE.
12. EXACT LOCATIONS OF SWITCHES, THERMOSTATS, BOXES, PLATES, RECEPTACLES, ETC. WILL BE LOCATED WITH THE ARCHITECT IN THE FIELD. MOUNTING HEIGHTS TO BE AS FOLLOWS:
  - TYP. SWITCHES: 48" TO TOP OF SWITCH U.O.N.
  - TYP. OUTLET: 15" TO CENTERLINE OF BOX U.O.N.
  - TYP. DATA BOX: 15" TO CENTERLINE OF BOX U.O.N.

IT IS THE INTENTION OF THE ARCHITECT TO GROUP AND ORGANIZE THE ABOVE-LISTED DEVICES TO THE GREATEST EXTENT POSSIBLE. THESE DEVICES SHALL NOT BE INSTALLED PRIOR TO FIELD REVIEW WITH THE ARCHITECT.

FIRESTOPPING NOTES

1. CONCEALED SPACES WITHIN PARTITIONS, WALLS, FLOORS, ROOFS, STAIRS, FURRING, PIPE CHASES, COLUMN ENCLOSURES, ETC. THAT WOULD PERMIT THE PASSAGE OF FLAME, SMOKE, SUMES OR HOT GASES FROM ONE FLOOR TO ANOTHER FLOOR OR ROOF SPACE OR FROM ONE CONCEALED AREA TO ANOTHER FLOOR OR ROOF SPACE, OR FROM ONE CONCEALED AREA TO ANOTHER SHALL BE FIRE STOPPED TO FORM AN EFFECTIVE DRAFT BARRIER, OR SHALL BE FILLED WITH NON-COMBUSTIBLE MATERIAL PER SECTION 27-345.
2. ALL HOLLOW PARTITIONS AND FURRED OUT SPACES SHALL BE FIRESTOPPED AT EACH FLOOR LEVEL. FIRETOPS SHALL BE THE FULL THICKNESS OF THE HOLLOW SPACE OR FURRED OUR SPACE AS PER 27-345(b).
3. FLOOR AND ROOF ASSEMBLIES SHALL HAVE ANY CONCEALED SPACES THERIN FIRESTOPPED. ALL FIRE RATED CEILINGS TO BE 5/8" SHEET ROCK FIRE CODE "X" AND SHALL BE CONTINUOUS BETWEEN EXTERIOR WALLS. VERTICAL FIRE DIVISIONS, OR VERTICAL PARTITIONS HAVING AT LEAST THE SAME FIRE RESISTANCE RATING AS THE CEILING AS PER SECTION 27-327 AND 27-345.
4. DUCT AND PIPE SPACES SHALL BE FIRESTOPPED AT EVERY FLOOR LEVEL AS PER 270345(g).
5. ALL FIRESTOPPING WORK SHALL BE SUBJECT TO THE CONTROLLED INSPECTION PROVISIONS OF THE BUILDING CODE AND AMENDMENTS CERTIFYING COMPLIANCE WITH THE ABOVE SHALL BE FILED WITH THE BUILDING DEPARTMENT AT THE COMPLETION OF THE WORK BY THE ARCHITECT OR ENGINEER DESIGNATED FOR SAID CONTROLLED INSPECTION.

Berg + Moss Architects

BMA

BERG + MOSS ARCHITECTS PC  
THE BEACON BUILDING  
473 MAIN STREET No. 1  
BEACON, NY 12508  
T: 845 831 1318  
INFO@BERGMOSS.COM

STRUCTURAL/ CIVIL ENGINEERS

Colliers

COLLIERS ENGINEERING & DESIGN

555 Hudson Valley Ave, Ste 101  
New Windsor, NY 12553

MECHANICAL ENGINEERS

LEGACY

LEGACY ENGINEERS

1001 Avenue of the Americas, 20th Floor  
New York, NY 10018

THESE CAD FILES MAY NOT BE USED, DUPLICATED, MODIFIED OR CHANGED IN ANY MANNER WITHOUT THE WRITTEN CONSENT OF BERG + MOSS ARCHITECTS PC. THE USER AND ITS AGENTS WILL BE LIABLE FOR ANY UNAUTHORIZED USE, DUPLICATION, MODIFICATION OR CHANGE.

SPRING VALLEY  
POLICE LOCKER  
UPGRADES

DRAWING TITLE  
**GENERAL NOTES/  
ADA NOTES**

DRAWING NO.  
**G-100.00**

SEAL & SIGNATURE

ISSUE DATE: 9/27/23  
SCALE: 1/4" = 1'-0"  
DWG BY: Author  
CHK BY: 1

JOB NUMBER  
-