

**ARCHITECT**  
**ksqdesign**  
L  
**KSQ Architects PC dba KSQ Design**  
215 West 40th Street, 15th Floor  
New York, NY 10018  
646.435.0660 office  
www.ksq.design

**Owner**  
**ROCKLAND BOCES**  
65 Parrot Road  
West Nyack, NY 10994  
845.627.1764 office  
www.rocklandboces.org

**Structural Engineer**  
Clapper Structural Engineering PLLC  
160 Partition Street  
Saugerties, NY 12477  
845.943.9601 office  
www.clapperstructural.com

**MEP Engineer**  
Fellenzer Engineering LLP  
22 Mulberry Street, Suite 2A  
Middletown, NY 10940  
845.343.1481 office  
www.felip.com  
FE#23-029

**Environmental Engineer**  
CONSULTANT  
123 MAIN STREET  
ANYTOWN, US 00000  
000.000.0000 office  
www.consultantwebsite.com

**ROCKLAND BOCES**  
ROOTED IN THE COMMUNITY

**Building #6  
Life Skills  
Alteration**  
  
65 Parrot Road  
West Nyack, NY 10994  
  
SED# 50-90-00-00-0-006-004  
**KEY PLAN**

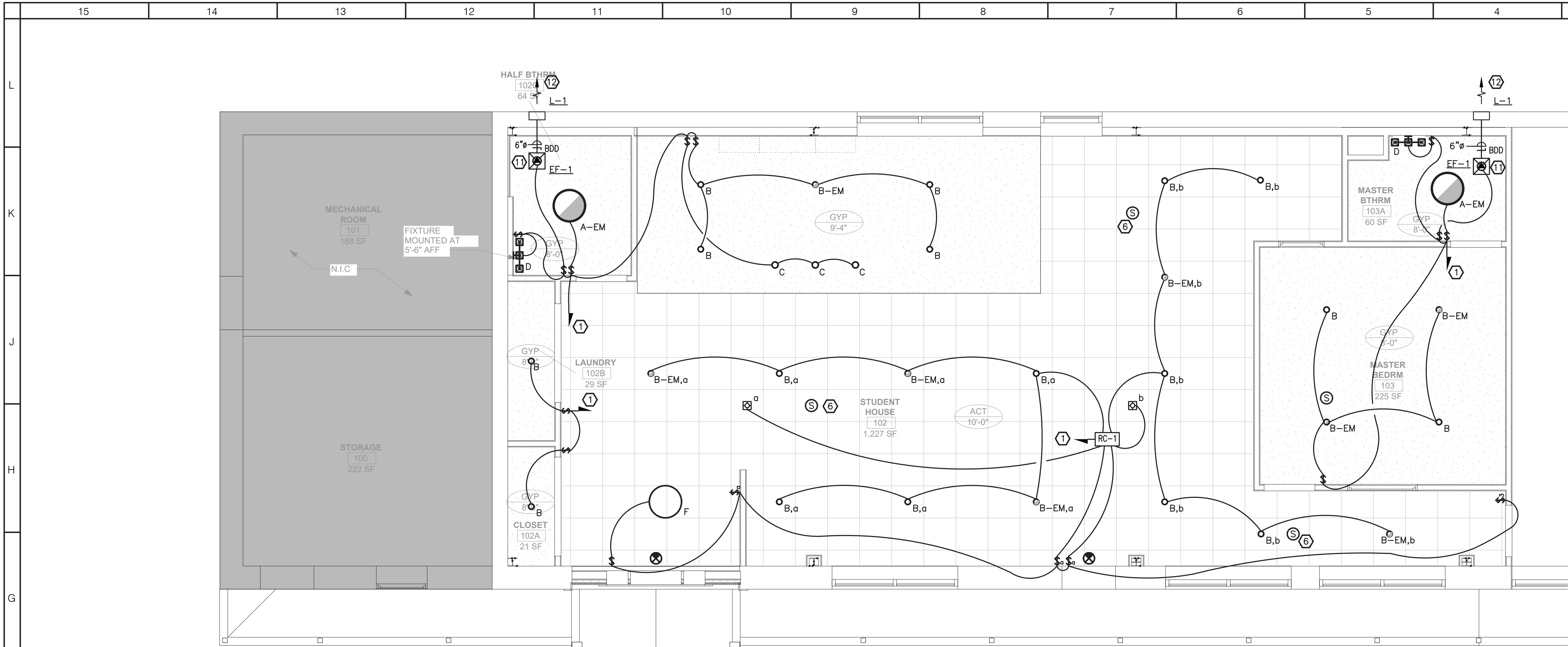
**REVISIONS**

No.	Description	Date

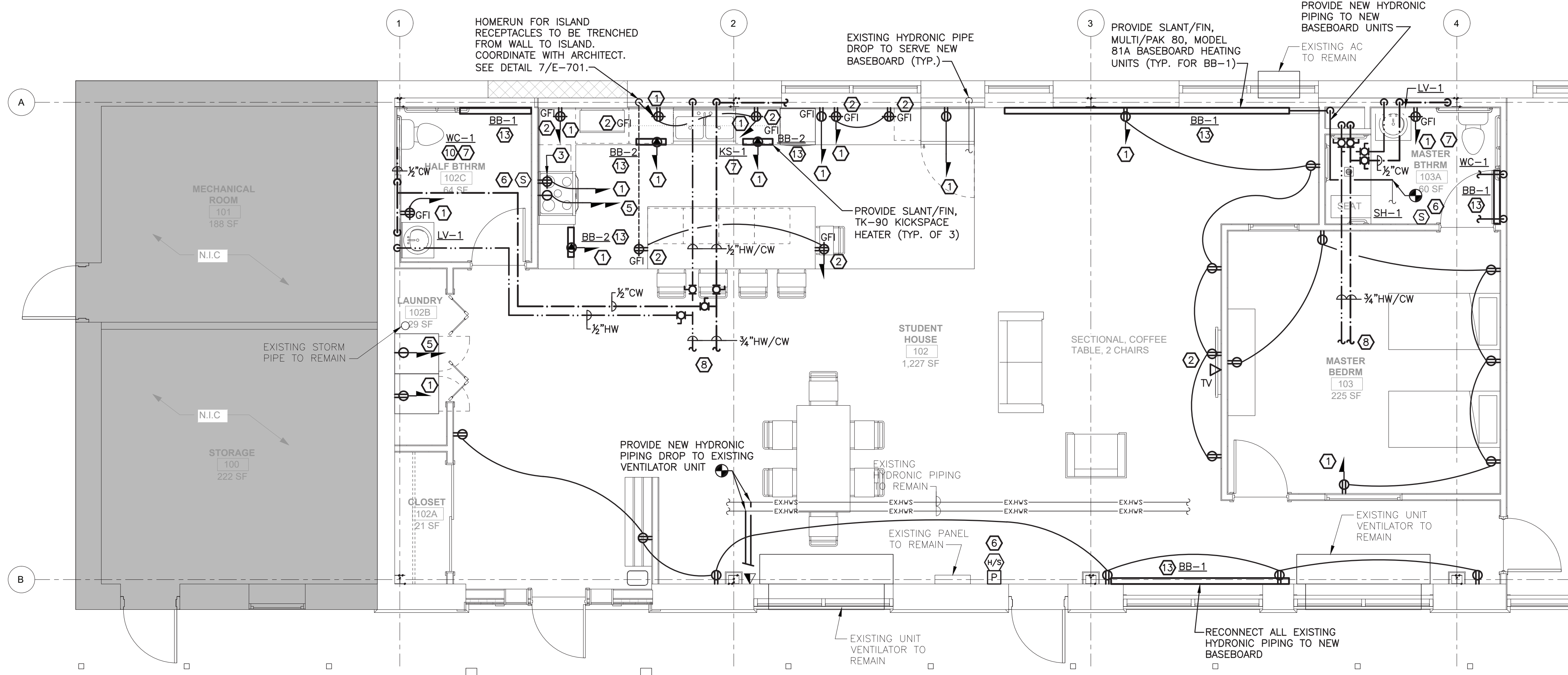
**ISSUED:** CD SET  
**DATE:** 2/17/23  
**SCALE:** AS NOTED  
**SHEET NAME:** LEVEL 1 DEMOLITION POWER FLOOR PLAN/RCP  
**SHEET NUMBER:** MEPD-101

JOHN D. FELLENER, P.E.  
NY PROFESSIONAL ENGINEER  
NO. 069373-1





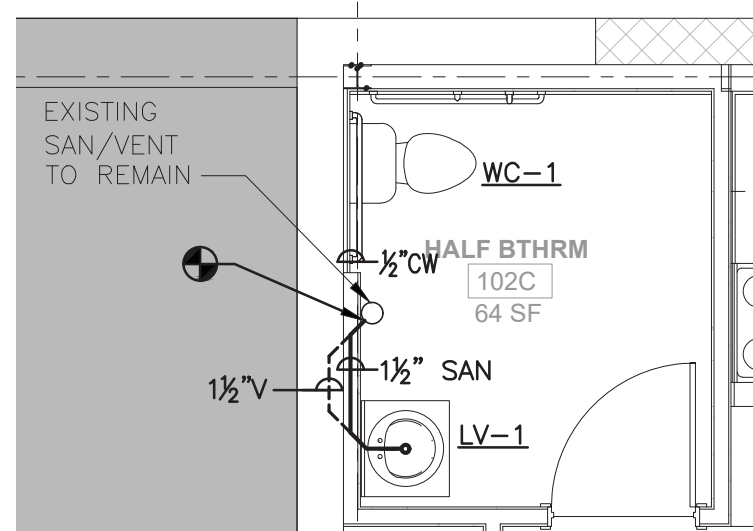
2 LEVEL 1 NEW WORK RCP PLAN  
SCALE: 1/4"=1'-0"



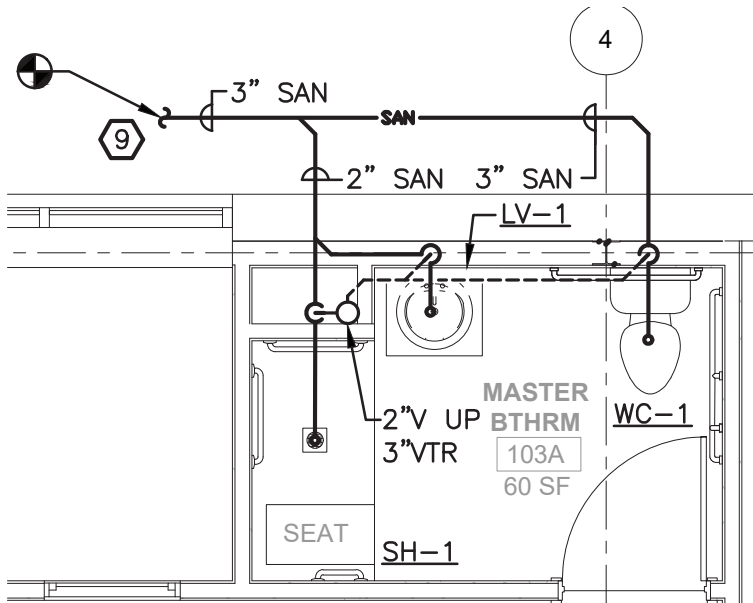
1 LEVEL 1 NEW WORK POWER FLOOR PLAN  
SCALE: 1/4"=1'-0"

KEYED NOTES:

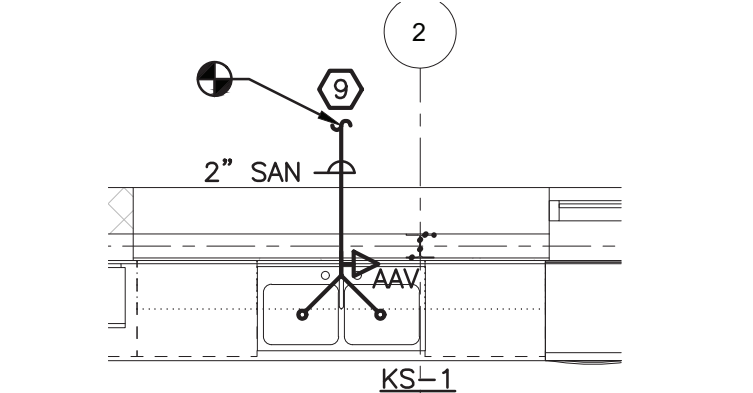
- UTILIZE AVAILABLE 1P, 20 AMP BREAKER WITH (2)#12, (1)#12 GND. IN 3/4" CONDUIT MADE AVAILABLE FROM DEMOLITION OR LABELED AS SPARE IN EXISTING PANEL.
- COORDINATE MOUNTING HEIGHT WITH ARCHITECT.
- PROVIDE DESIGNATED RECEPTACLE FOR MICROWAVE/HOOD COMBO. COORDINATE MOUNTING HEIGHT WITH ARCHITECT.
- NOT USED.
- PROVIDE DEDICATED 2 POLE CIRCUIT TO FEED NEW EQUIPMENT. COORDINATE CIRCUIT BREAKER AND WIRING SIZE WITH MANUFACTURER DOCUMENTS.
- PROVIDE NEW HORN/STROBE, STROBE, SMOKE DETECTORS AND PULL STATIONS WITH WIRING RESPECTIVELY INTO EXISTING FIRE ALARM SYSTEM. NEW FIRE ALARM EQUIPMENT TO MATCH EXISTING MAKE AND MODEL. COORDINATE ALL WORK WITH FIRE ALARM MAINTENANCE CONTRACTOR TO MAKE CONNECTIONS AND EXTENSIONS TO EXISTING NOTIFICATION APPLIANCE CIRCUITS AND INDICATION APPLIANCE CIRCUITS.
- REFERENCE P-001 FOR ALL FIXTURE SELECTIONS.
- EXTEND & CONNECT NEW COLD AND HOT WATER LINES TO THE EXISTING COLD AND HOT WATER LINES. V.I.F. LOCATION OF EXISTING COLD AND HOT WATER LINES.
- ROUTE NEW SAN LINE TO THE EXISTING 6" SAN LINE. V.I.F.
- RECONNECT WC-1 TO EXISTING SANITARY LINE AND VENT LINE.
- PROVIDE CEILING EXHAUST FAN EF-1. REFERENCE "EXHAUST FAN SCHEDULE" ON H-001 FOR SELECTION.
- PROVIDE EXHAUST LOUVER L-1. REFERENCE "LOUVER SCHEDULE" ON H-001 FOR SELECTION. REUSE EXISTING PENETRATION IF APPLICABLE.
- PROVIDE NEW HYDRONIC BASEBOARDS. EXTEND/RECONNECT HYDRONIC PIPING ALONG WALL TO NEW BASEBOARD AS REQUIRED.



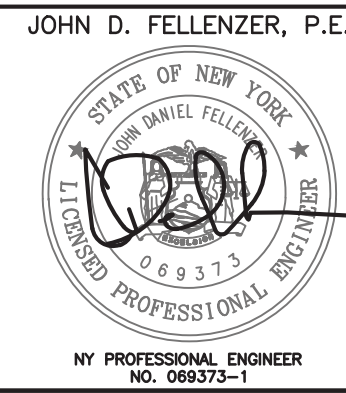
3 BATH 102C SANITARY  
SCALE: 1/4"=1'-0"



4 BATH 103A SANITARY  
SCALE: 1/4"=1'-0"



4 KITCHEN SANITARY  
SCALE: 1/4"=1'-0"



ARCHITECT

ksqdesign

KSQ Architects PC dba KSQ Design  
215 West 40th Street, 15th Floor  
New York, NY 10018  
646.435.0660 office  
www.ksq.design

Owner

ROCKLAND BOCES  
65 Parrot Road  
West Nyack, NY 10994  
845.627.1764 office  
www.rocklandbooces.org

Structural Engineer

Clapper Structural Engineering PLLC  
160 Partition Street  
Saugerties, NY 12477  
845.943.9601 office  
www.clapperstructural.com

MEP Engineer

Fellenzer Engineering LLP  
22 Mulberry Street, Suite 2A  
Middletown, NY 10940  
845.343.1481 office  
www.fellp.com  
FE#23-029

Environmental Engineer

CONSULTANT  
123 MAIN STREET  
ANYTOWN, US 00000  
000.000.0000 office  
www.consultantwebsite.com



Building #6  
Life Skills  
Alteration

65 Parrot Road  
West Nyack, NY 10994

SED# 50-90-00-00-0-006-004

KEY PLAN



REVISIONS

No.	Description	Date

ISSUED: CD SET

DATE: 2/17/23

SCALE: AS NOTED

SHEET NAME:  
LEVEL 1 NEW WORK  
POWER FLOOR  
PLAN/RCP  
SHEET NUMBER:

MEP-101