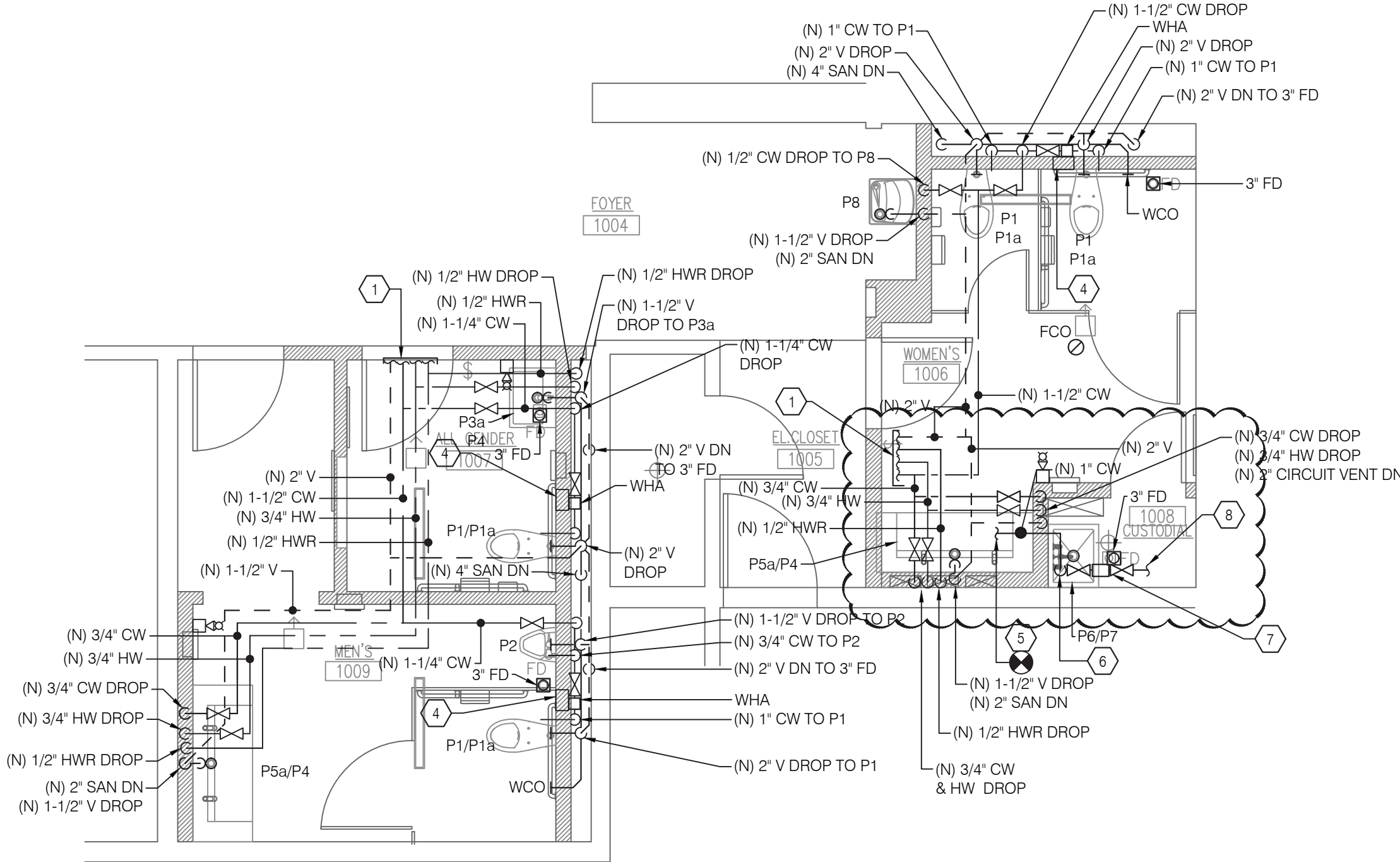
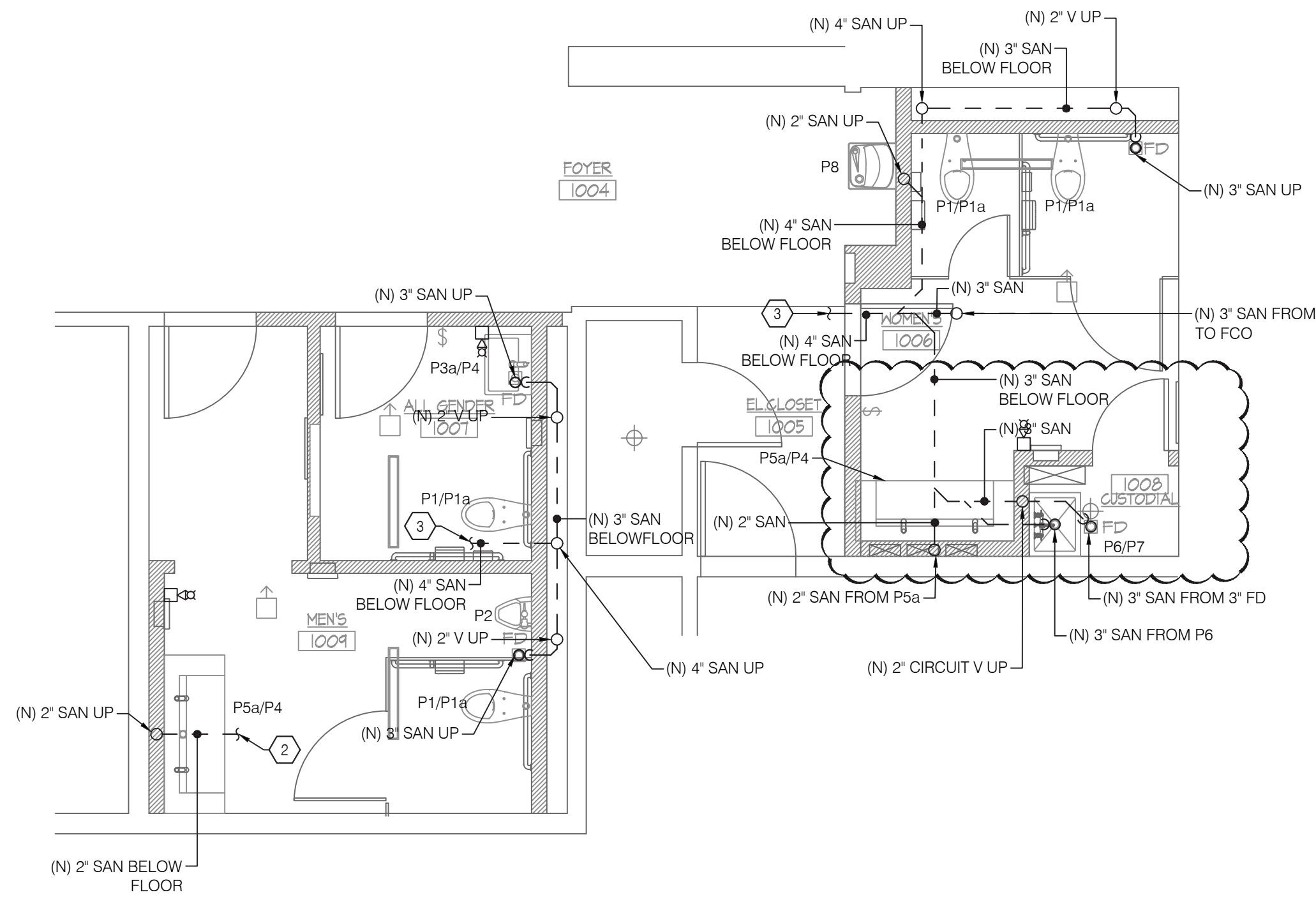


1 FIRST FLOOR PLAN - PLUMBING REMOVALS
P-105.00 SCALE: 1/4" = 1'-0"



2 FIRST FLOOR PLAN - PLUMBING NEW WORK
P-102.00 SCALE: 1/4" = 1'-0"



3 FIRST FLOOR PLAN - PLUMBING NEW WORK (BELOW FLOOR PLAN)
P-102.00 SCALE: 1/4" = 1'-0"

- ### # DEMOLITION KEY NOTES
1. REMOVE EXISTING WATER CLOSET, FLUSH VALVE, CARRIER AND ASSOCIATED PIPES.
 2. REMOVE EXISTING URINAL, FLUSH VALVE, CARRIER AND ASSOCIATED PIPES.
 3. REMOVE EXISTING LAVATORY, FAUCET ALONG WITH P-TRAP CONNECTIONS AND ASSOCIATED PIPES.
 4. REMOVE EXISTING FLOOR DRAIN AND ALL ASSOCIATED PIPES.
 5. REMOVE EXISTING DRINKING FOUNTAIN AND ALL ASSOCIATED PIPES.
 6. REMOVE EXISTING SINK, FAUCET ALONG WITH P-TRAP CONNECTIONS AND ASSOCIATED PIPES.
 7. REMOVE EXISTING CW PIPING, VALVES AND APPURTENANCES BACK TO NEAREST BRANCH / MAIN AND CAP FOR RECONNECTION ABOVE CEILING. REMOVALS DOWNSTREAM OF INDICATED CONTROL VALVE BY FIRE PROTECTION CONTRACTOR. COORDINATE WITH FIRE PROTECTION CONTRACTOR FOR REMOVALS ASSOCIATED WITH THIS CW PIPING.

- ### # NEW WORK KEY NOTES
1. CONNECT NEW 2" VENT, 1-1/2" CW 3/4" HW AND 1/2" HWR PIPES TO NEAREST EXISTING RESPECTIVE PIPES AT CEILING.
 2. CONNECT NEW 2" SANITARY PIPE TO NEAREST EXISTING SANITARY PIPE AT FLOOR BELOW.
 3. CONNECT NEW 4" SANITARY PIPE TO NEAREST EXISTING SANITARY PIPE AT FLOOR BELOW.
 4. ACCESS PANEL TO ACCESS BALL VALVE AND WATER HAMMER ARRESTOR.
 5. CONNECT NEW 1" CW PIPE TO NEAREST EXISTING 1" CW PIPE.
 6. 1" CW DROP BELOW EXISTING CEILING.
 7. NEW DOUBLE CHECK VALVE, BASIS OF DESIGN WATTS MODEL LF007 VALVE SHALL BE INSTALLED IN ACCESSIBLE LOCATION SUCH THAT VALVE HANDLES ARE NO GREATER THAN 7'-0" ABOVE FINISHED FLOOR. COORDINATE WITH ARCHITECT AND FIRE PROTECTION FOR EXACT LOCATION.
 8. 1" SPRINKLER PIPING SHOWN FOR REFERENCE ONLY. PIPING DOWNSTREAM OF DOUBLE CHECK VALVE CAPTURED UNDER FIRE PROTECTION SCOPE OF WORK. REFER TO FIRE PROTECTION PLANS.

RESTROOM RENOVATION PURCHASE COLLEGE

STATE UNIVERSITY OF NEW YORK

735 Anderson Hill Rd.
Purchase, NY 10577

PHASE 3:

CAMPUS CENTER NORTH BUILDING
CAMPUS CENTER SOUTH BUILDING
PHYSICAL EDUCATION BUILDING
MAIN DINING HALL

Conditions

ALL IDEAS, DESIGNS, ARRANGEMENTS AND PLANS INDICATED OR REPRESENTED BY THIS DRAWING ARE OWNED BY, AND THE PROPERTY OF RONNETTE RILEY ARCHITECT AND WERE CREATED, DEVELOPED AND DEVELOPED FOR THE USE OF, AND IN CONNECTION WITH THE NONE OF SUCH IDEAS, DESIGNS, ARRANGEMENTS OR PLANS SHALL BE USED BY OR DISCLOSED TO ANY PERSON, FIRM OR CORPORATION FOR ANY PURPOSE WHATSOEVER WITHOUT THE WRITTEN PERMISSION OF RONNETTE RILEY ARCHITECT.

© Copyright Ronnette Riley Architect 2020

Ronnette Riley Architect

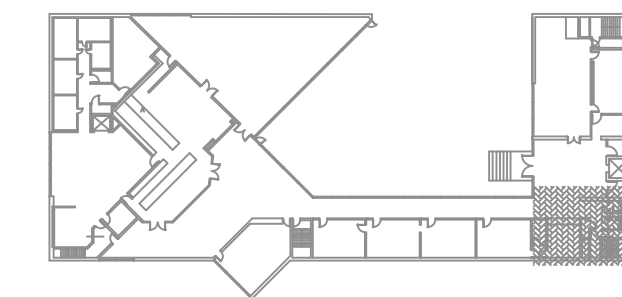
494 Eighth Avenue, 15th Floor
New York, NY 10001
T 212 594 4015
F 212 594 2868
www.ronnetteriley.com

MEP Engineer

SETTY & Associates, Ltd
149 W 36th Street, 8th floor
New York, NY 10018
T 646 253 9000
F 646 224 8497

Rev	Date	Issue
	27 Feb 2023	Issue for Bid
	6/16/2023	PHASE 3 ADDENDUM #1

KEY PLAN



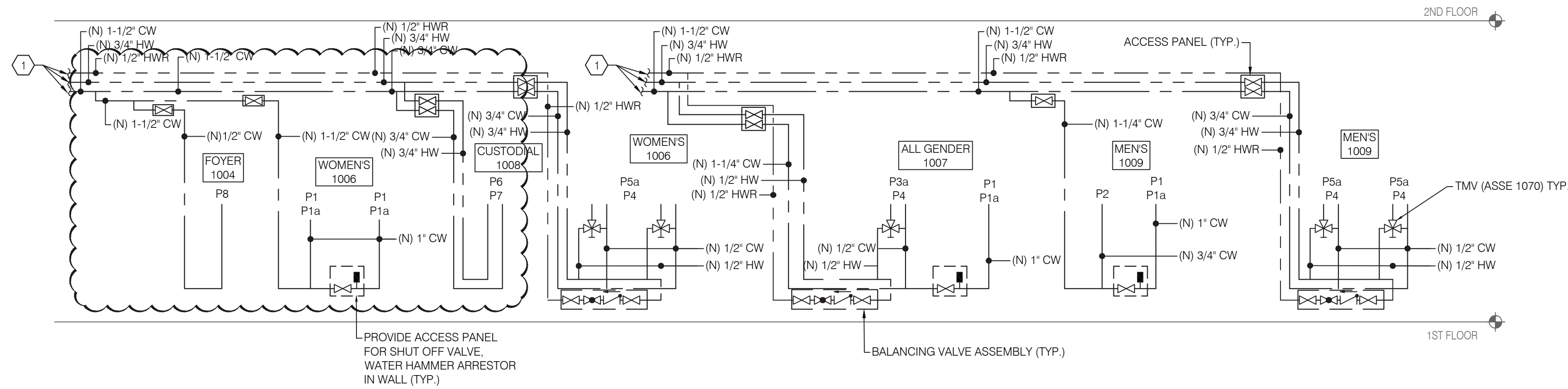
CAMPUS CENTER NORTH-PLUMBING PLANS

Date	06-15-2023
Project No.	1944
Drawing By	CHS
CHK By	EB
Scale	AS NOTED

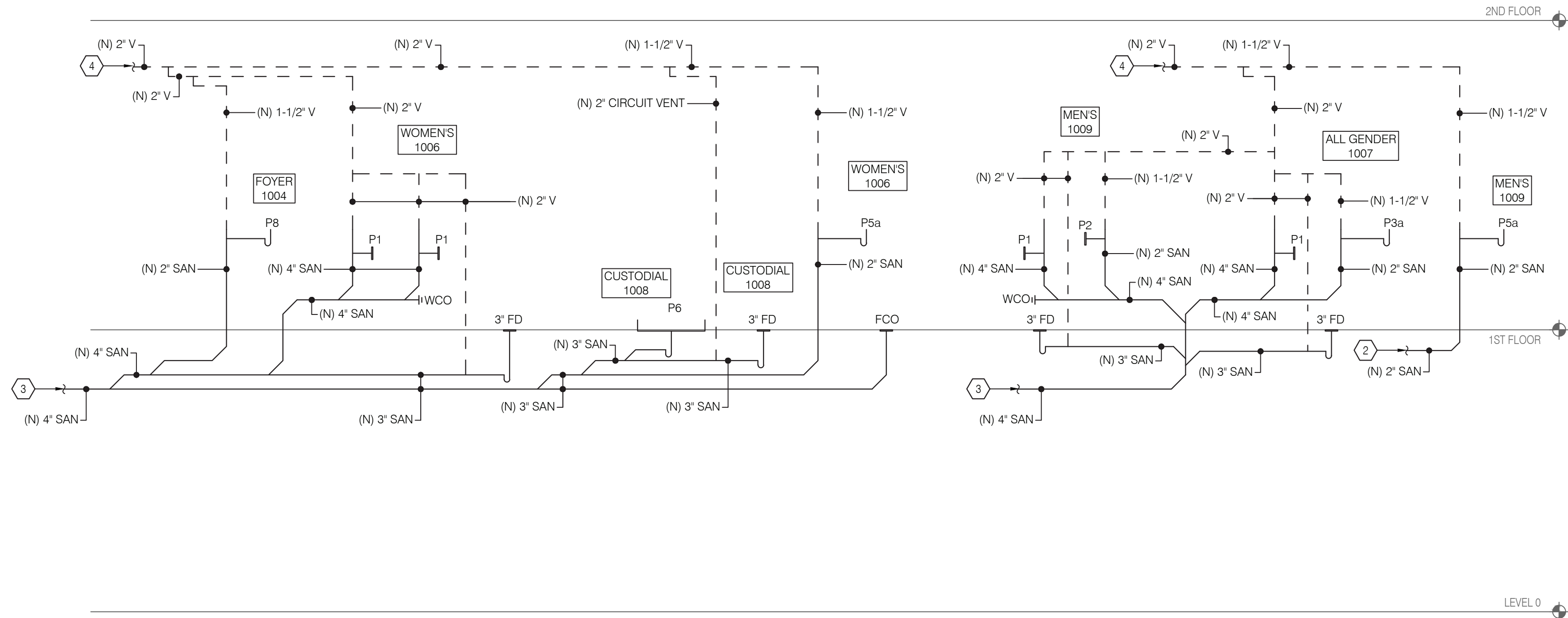
DOB Rev

P-102.00





1 PARTIAL WATER RISER DIAGRAM (CAMPUS CENTRE NORTH)
P-505.00 SCALE: NOT TO SCALE



2 PARTIAL SANITARY RISER DIAGRAM (CAMPUS CENTRE NORTH)
P-505.00 SCALE: NOT TO SCALE

SHEET KEY NOTES

1. CONNECT NEW 1-1/2" CW, 3/4" HW AND 1/2" HWR PIPES TO NEAREST EXISTING RESPECTIVE PIPES AT CEILING.
2. CONNECT NEW 2" SANITARY PIPE TO NEAREST EXISTING SANITARY PIPE AT FLOOR BELOW.
3. CONNECT NEW 4" SANITARY PIPE TO NEAREST EXISTING SANITARY PIPE AT FLOOR BELOW.
4. CONNECT NEW 2" VENT PIPE TO NEAREST EXISTING RESPECTIVE PIPE AT CEILING.

RESTROOM RENOVATION PURCHASE COLLEGE

STATE UNIVERSITY OF NEW YORK

735 Anderson Hill Rd.
Purchase, NY 10577

PHASE 3:

CAMPUS CENTER NORTH BUILDING
CAMPUS CENTER SOUTH BUILDING
PHYSICAL EDUCATION BUILDING
MAIN DINING HALL

Conditions

ALL IDEAS, DESIGNS, ARRANGEMENTS AND PLANS INDICATED OR REPRESENTED BY THIS DRAWING ARE OWNED BY, AND THE PROPERTY OF RONNETTE RILEY ARCHITECT AND WERE CREATED, DEVELOPED AND DEVELOPED FOR THE USE OF, AND IN CONNECTION WITH THE CREATION OF THIS PROJECT. NONE OF SUCH IDEAS, DESIGNS, ARRANGEMENTS OR PLANS SHALL BE USED BY OR DISCLOSED TO ANY PERSON, FIRM OR CORPORATION FOR ANY PURPOSE WHATSOEVER WITHOUT THE WRITTEN PERMISSION OF RONNETTE RILEY ARCHITECT.

© Copyright Ronnette Riley Architect 2020

Ronnette Riley Architect

494 Eighth Avenue, 15th Floor
New York, NY 10001
T 212 594 4015
F 212 594 2868
www.ronnetteriley.com

MEP Engineer

SETTY & Associates, Ltd
149 W 36th Street, 8th floor
New York, NY 10018
T 646 253 9000
F 646 224 8497

Rev	Date	Issue
27 Feb 2023	6/16/2023	Issue for Bid PHASE 3 ADDENDUM #1

Title CAMPUS CENTER NORTH - PLUMBING RISER DIAGRAMS

Date 06-15-2023
Project No. 1944
Drawing By CHS
CHK By EB
Scale AS NOTED

DOB Rev

P-502.00

PLUMBING FIXTURE SCHEDULE											
ID	FIXTURE	ADA	MANUFACTURER	MODEL	DESCRIPTION	MOUNTING	REMARKS	PLUMBING FIXTURE ROUGH-IN			
								CW	HW	WASTE	VENT
P1	WALL MOUNTED TOILET	YES	SLOAN	ST-2459	WHITE VITREOUS CHINA, ELONGATED BOWL, WALL MOUNTED, WALL OUTLET, SIPHON JET FLUSHING ACTION ACHIEVES 1000g MAP SCORE WHEN USED WITH ANY SLOAN FLUSHOMETER , 1 1/2" I.P.S. TOP SPUD INLET, STATIC LOAD RATING OF 750 LBS. WATER SPOT AREA 10 1/8" X 9 3/8" (26 CM X24 CM).	WALL MOUNT	1.28 GPF, FLUSHOMETER TOILET, FOR ADA SEAT HEIGHT SET AT 17" TO 19" FROM FINISHED FLOOR	-	-	4"	2"
P1a	SOLAR POWERED DUAL FLUSH	-	SLOAN	8111-1.6/1.1	EXPOSED, SOLAR POWERED, SENSOR ACTIVATED SLOAN SOLIS DUAL FLUSH MODEL WATER CLOSET FLUSHOMETER FOR WALL HUNG TOP SPUD BOWLS. FULL FLUSH (LARGE BUTTON) 1.6 GPF/6.0 LPF. REDUCED FLUSH (SMALL BUTTON) 1.1 GPF/4.2 LPF.	-	-	1"	-	-	-
P2	URINAL/FLUSH VALVE COMBO	YES	SLOAN	WESU-7000.1201	WHITE VITREOUS CHINA, WASH-DOWN FLUSHING ACTION, INTEGRAL FLUSHING RIM, 3/4" I.P.S. TOP SPUD INLET, 2" NPT OUTLET FLANGE , VANDAL RESISTANT STRAINER ASSEMBLY INCLUDED, 100% FACTORY FLUSH TESTED , FLUSH VOLUME 0.125 GPF, SU-7009 URINAL AND SOLIS 8186 FLUSHOMETER COMBO.	WALL MOUNT	0.125 GPF EXPOSED SENSOR URINAL FLUSHOMETER	3/4"	-	2"	1-1/2"
P3a	WALL MOUNTED SINK	YES	DURAVIT	VERO	SINK DIMENSION 23 5/8" X 18 1/4" X 5 3/8" , WHITE VITREOUS CHINA WITH OVER FLOW, ORDER NO 045460.27	WALL MOUNT	-	-	-	2"	1-1/2"
P3b	WALL MOUNTED SINK	YES	DURAVIT	VERO	SINK DIMENSION 31 1/2" X 18 1/4" X 5 3/8" , WHITE VITREOUS CHINA WITH OVER FLOW, ORDER NO 045480.25	WALL MOUNT	-	-	-	2"	1-1/2"
P4	WALL MOUNTED SINK FAUCET	-	SLOAN	OPTIMA SOLIS EAF-875-16N	SOLAR POWERED, SENSOR ACTIVATED , ELECTRONIC , CHROME PLATED CONSTRUCTED METAL , HAND WASHING FAUCET , MAGNETIC SOLEINID VALVE, AUTOMATIC SELF ADAPTING SENSOR TECHNOLOGY, 6 VDC LITHIUM BATTERY BACK-UP POWER	-	0.5 GPM FLOW RATE, PROVIDE ASSE #4079 THERMOSTATIC MIXING VALVE	1/2"	1/2"	-	-
P5a	VANITY SINK	YES	SOPHSTONE	SOPH-ST62	SINK DIMENSION 62" X 23 5/8" X 4-3/4" ADA COMPLIANT, SOPHSTONE COMPOSITE STONE WITH HONED FINISH, METICULOUSLY HAND CRAFTED, SMOOTH, EASY TO CLEAN SURFACE WITH STAIN RESISTANT QUALITIES. ECO- SENSITIVE WITH HIGH RECYCLED MATERIAL CONTENT.	WALL MOUNT	FOR SOPHSTONE VANITY COLORS REFER TO ARCHITECTURAL DRAWINGS	-	-	2"	1-1/2"
P5d	VANITY SINK	YES	SOPHSTONE	SOPH-ST144	SINK DIMENSION 114" X 23 5/8" X 4-3/4" ADA COMPLIANT, SOPHSTONE COMPOSITE STONE WITH HONED FINISH, METICULOUSLY HAND CRAFTED, SMOOTH, EASY TO CLEAN SURFACE WITH STAIN RESISTANT QUALITIES. ECO- SENSITIVE WITH HIGH RECYCLED MATERIAL CONTEN	WALL MOUNT	FOR SOPHSTONE VANITY COLORS REFER TO ARCHITECTURAL DRAWINGS	-	-	2"	1-1/2"
P6	MOP SINK	-	ADVANCE TABCO	B-OP-20	16 GAUGE TYPE 304 SERIES STAINLESS STEEL SINK BOWL WITH FLOOR MOUNTED, SINK DIMENSION 21" X 25" X 10". FREE FLOW DRAIN.	FLOOR MOUNT	-	-	-	3"	2"
P7	MOP SINK WALL MOUNTED FAUCET	-	ADVANCE TABCO	K-240	BRASS CHROME PLATED BODY AND SPOUT, CHROME PLATED HANDLES, 8" O.C WATER SUPPLY , QUARTER TURN WEDGE STYLE HANDLES WITH COLORED HOT AND COLD INDEXES, VACUUM BREAKER, BUILT-IN STOPS.	-	-	3/4"	3/4"	-	-
P8	DRINKING FOUNTAIN	YES	ELKAY	LZS8WSLP	ELKAY ENHANCED EZ420 BOTTLE FILLING STATION & SINGLE ADA COOLER, FILTERED 8 GPH FINISH WITH LIGHT GREY GRANITE. 115V/60HZ , FULL LOAD 5 AMPS WITH CHILLING CAPACITY OF 8.0 GPH (GALLONS PER HOUR) OF 50° F DRINKING WATER, HANDS FREE, AUTOMATIC FILTER STATUS RESET, ENERGY SAVINGS, GREEN TICKER, LAMINAR FLOW , ANTIMICROBIAL ,REAL DRAIN	WALL MOUNT	-	1/2"	-	2"	1-1/2"
3" FD	FLOOR DRAIN	-	PROSET	T35630-F-P	THE TRAP GUARD DEVICE IS AN INTEGRAL PART OF THE PROSET FLOOR DRAIN AND COMES AS A COMPLETE UNIT. THE DRAIN COMES WITH A PROTECTIVE PLASTIC STRAINER COVER AND A HEAVY PLUG UNDERNEATH THE STRAINER TOP.	FLOOR MOUNT	-	-	-	3"	2"
NOTE: *REFER TO ARCHITECTURAL PLANS FOR EXACT FIXTURE LOCATIONS, QUANTITIES AND ADA REQUIREMENTS. *PLUMBING FIXTURE SCHEDULE INDICATING THE SPECIFIED PRODUCT ARE BASIS OF DESIGN.											

RESTROOM RENOVATION PURCHASE COLLEGE

STATE UNIVERSITY OF NEW YORK

735 Anderson Hill Rd.
Purchase, NY 10577

PHASE 3:

CAMPUS CENTER NORTH BUILDING
CAMPUS CENTER SOUTH BUILDING
PHYSICAL EDUCATION BUILDING
MAIN DINING HALL

Conditions

ALL IDEAS, DESIGNS, ARRANGEMENTS AND PLANS INDICATED OR REPRESENTED BY THIS DRAWING ARE OWNED BY, AND THE PROPERTY OF RONNETTE RILEY ARCHITECT AND WERE CREATED, DEVELOPED AND DEVELOPED FOR THE USE OF, AND IN CONNECTION WITH THE WORK OF SUCH IDEAS, DESIGNS, ARRANGEMENTS OR PLANS SHALL BE USED BY OR DISCLOSED TO ANY PERSON, FIRM OR CORPORATION FOR ANY PURPOSE WHATSOEVER WITHOUT THE WRITTEN PERMISSION OF RONNETTE RILEY ARCHITECT.

© Copyright Ronnette Riley Architect 2020

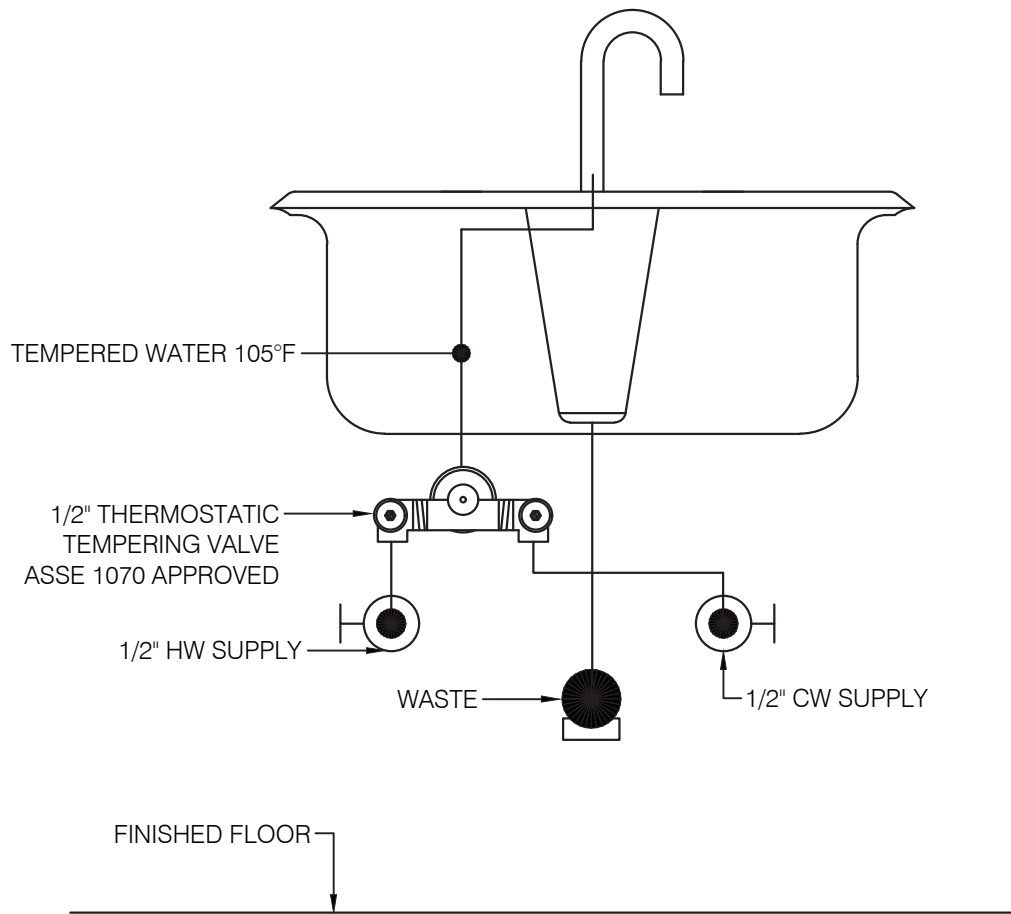
Ronnette Riley Architect

494 Eighth Avenue, 15th Floor
New York, NY 10001
T 212 594 4015
F 212 594 2868
www.ronnetteriley.com

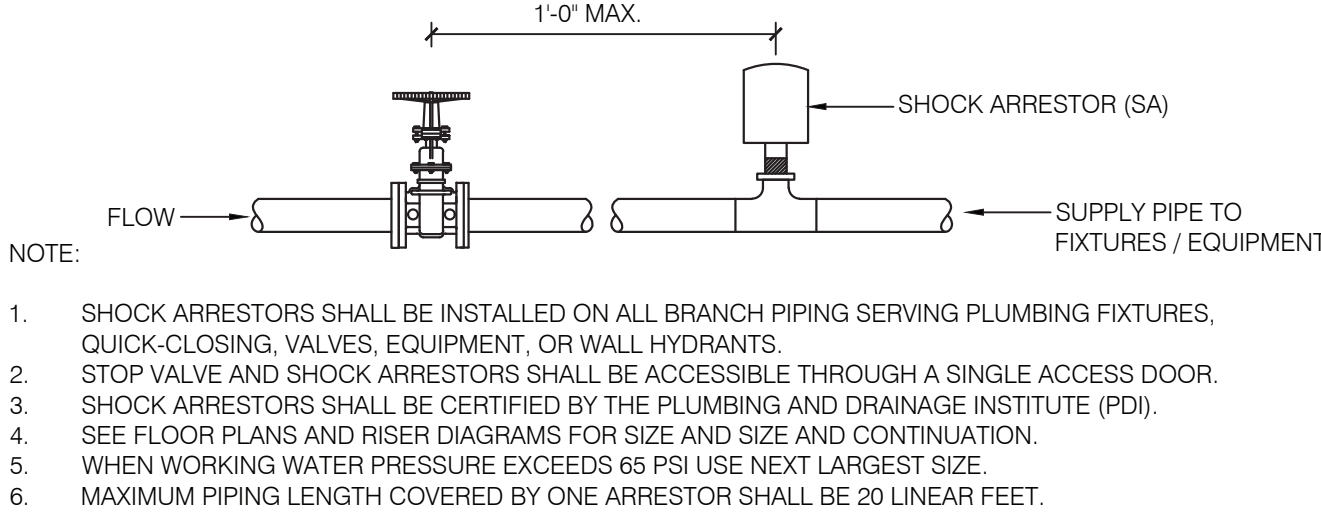
MEP Engineer

SETTY & Associates, Ltd
149 W 36th Street, 8th floor
New York, NY 10018
T 646 253 9000
F 646 224 8497

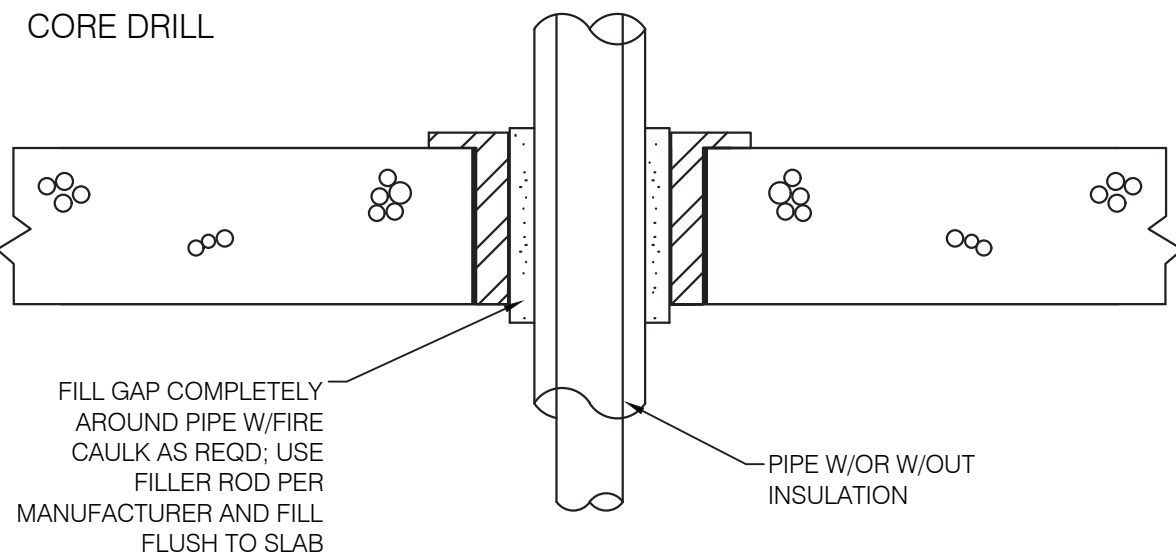
Rev	Date	Issue
27 Feb 2023	Issue for Bid	
6/16/2023	PHASE 3 ADDENDUM #1	



4 POINT OF USE MIXING VALVE DETAIL
SCALE: NOT TO SCALE

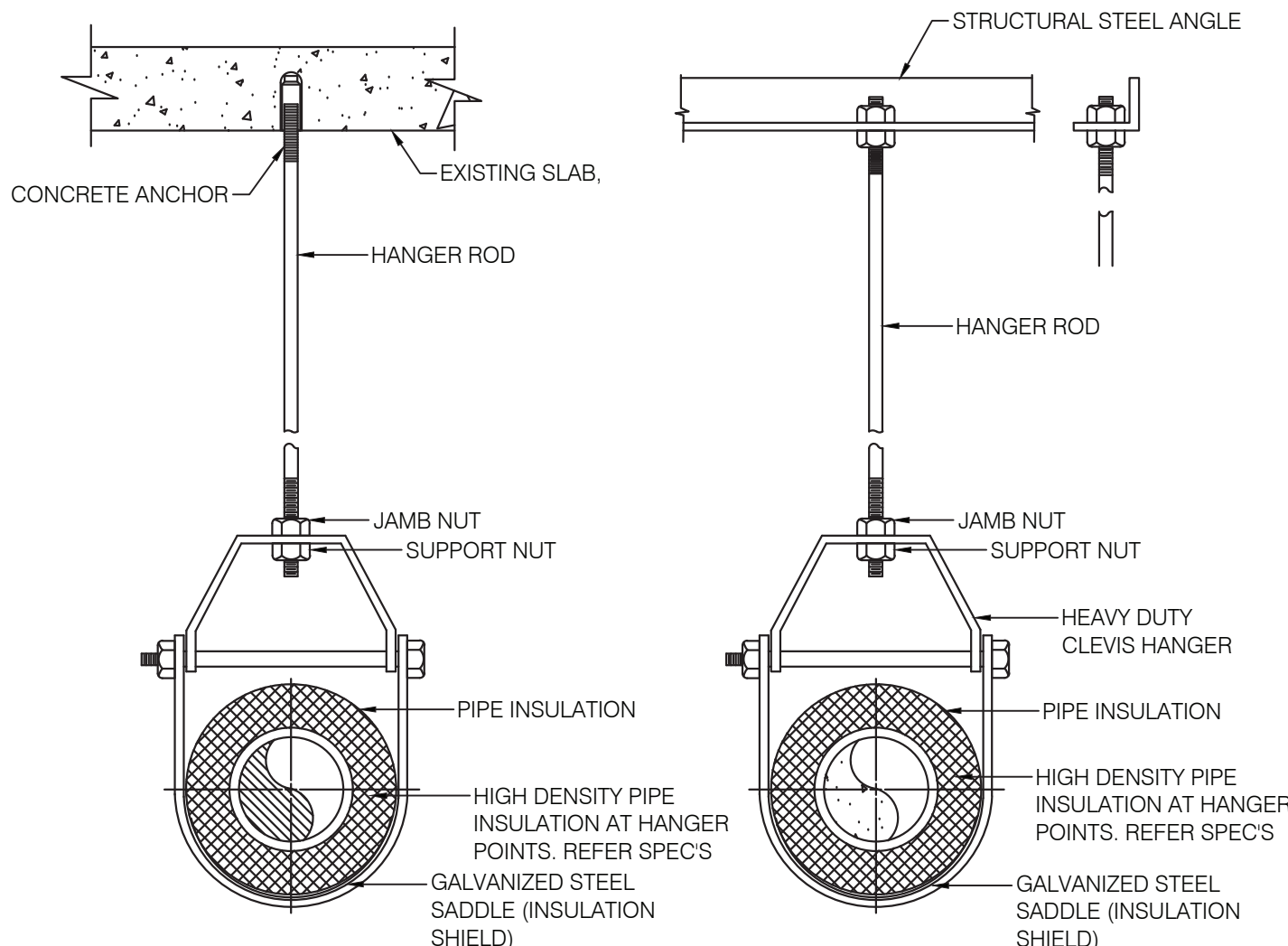


3 SHOCK ARRESTOR DETAIL
SCALE: NOT TO SCALE

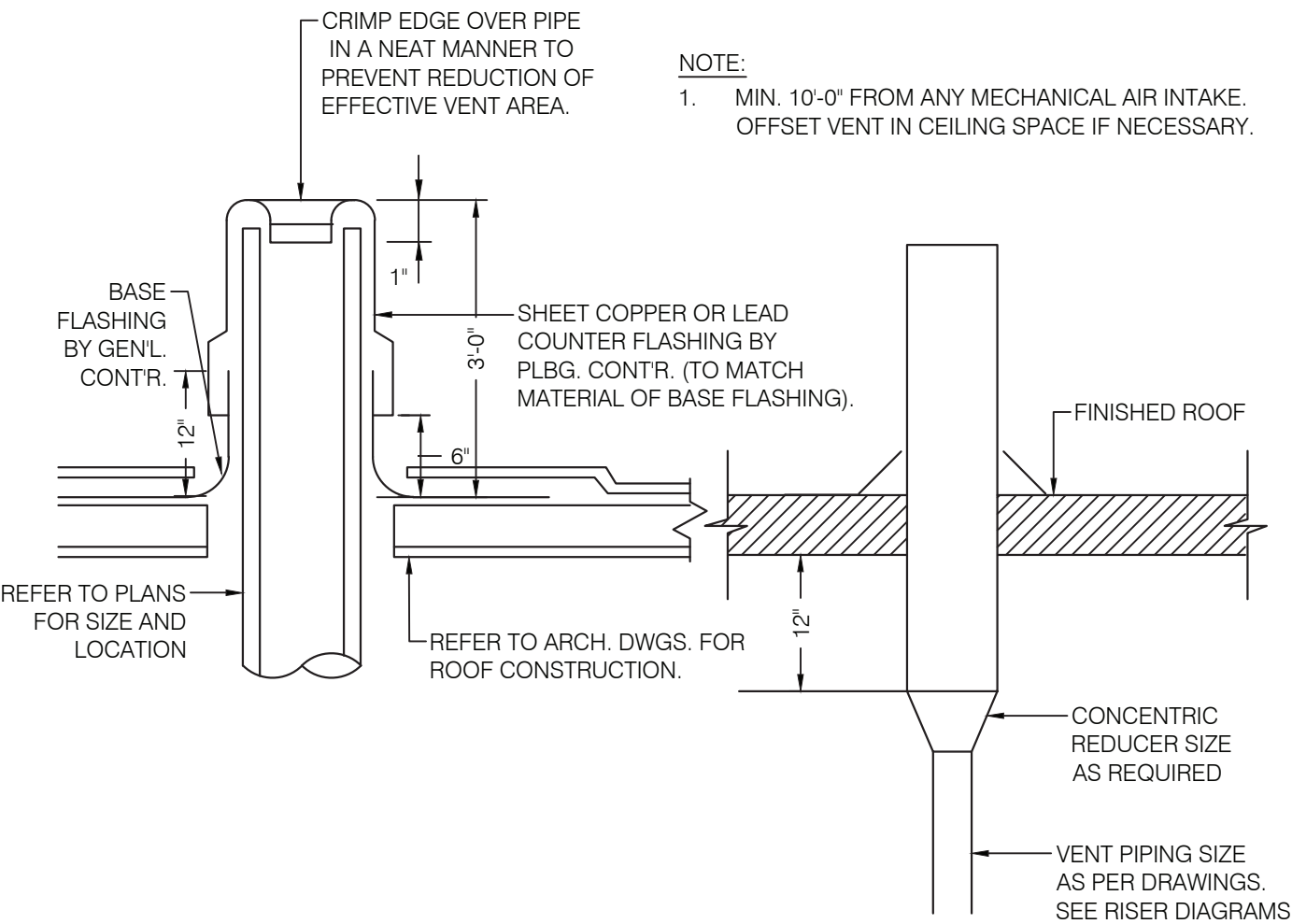


NOTE: ALL PIPING SLEEVES WILL BE SCHEDULE 40 STEEL PIPE

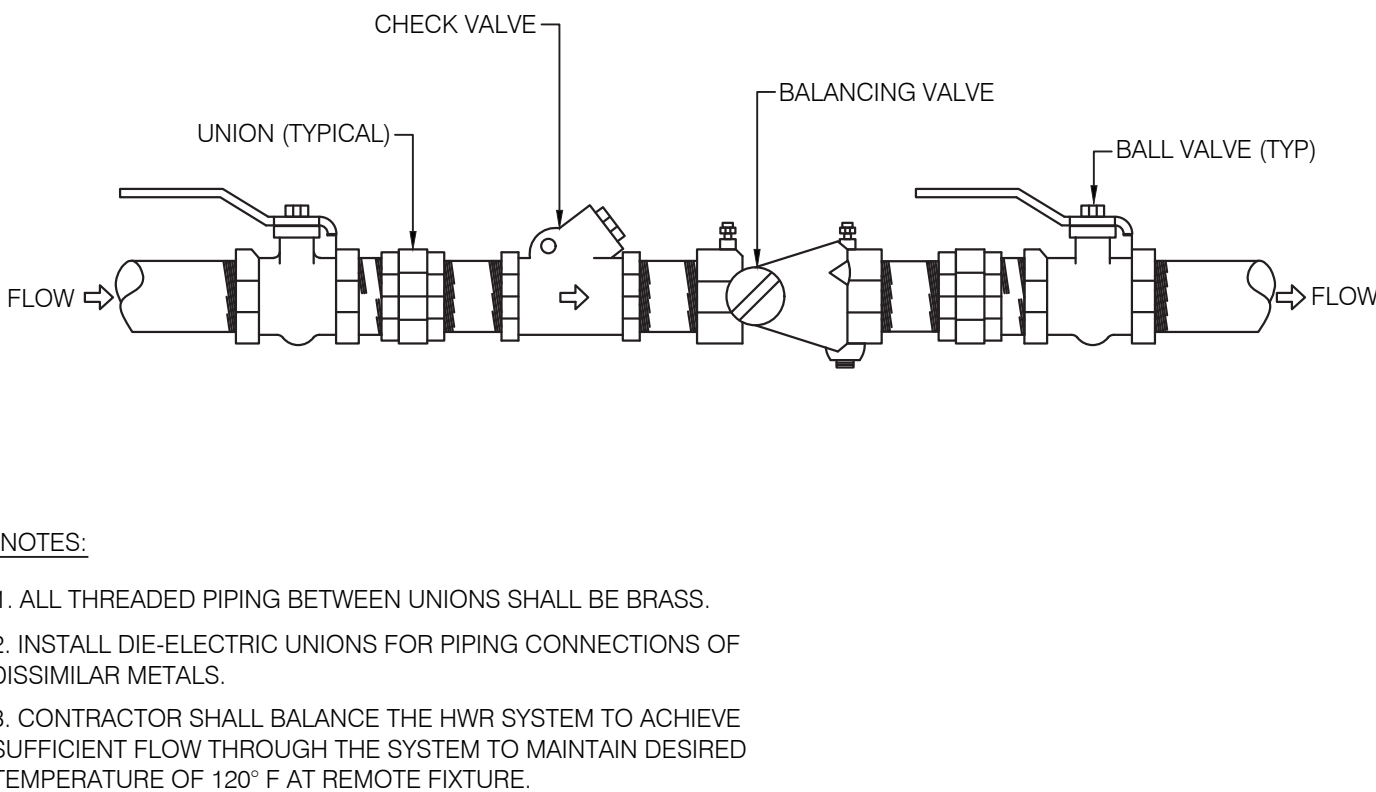
2 PIPE PENETRATION THROUGH CONCRETE
SCALE: NOT TO SCALE



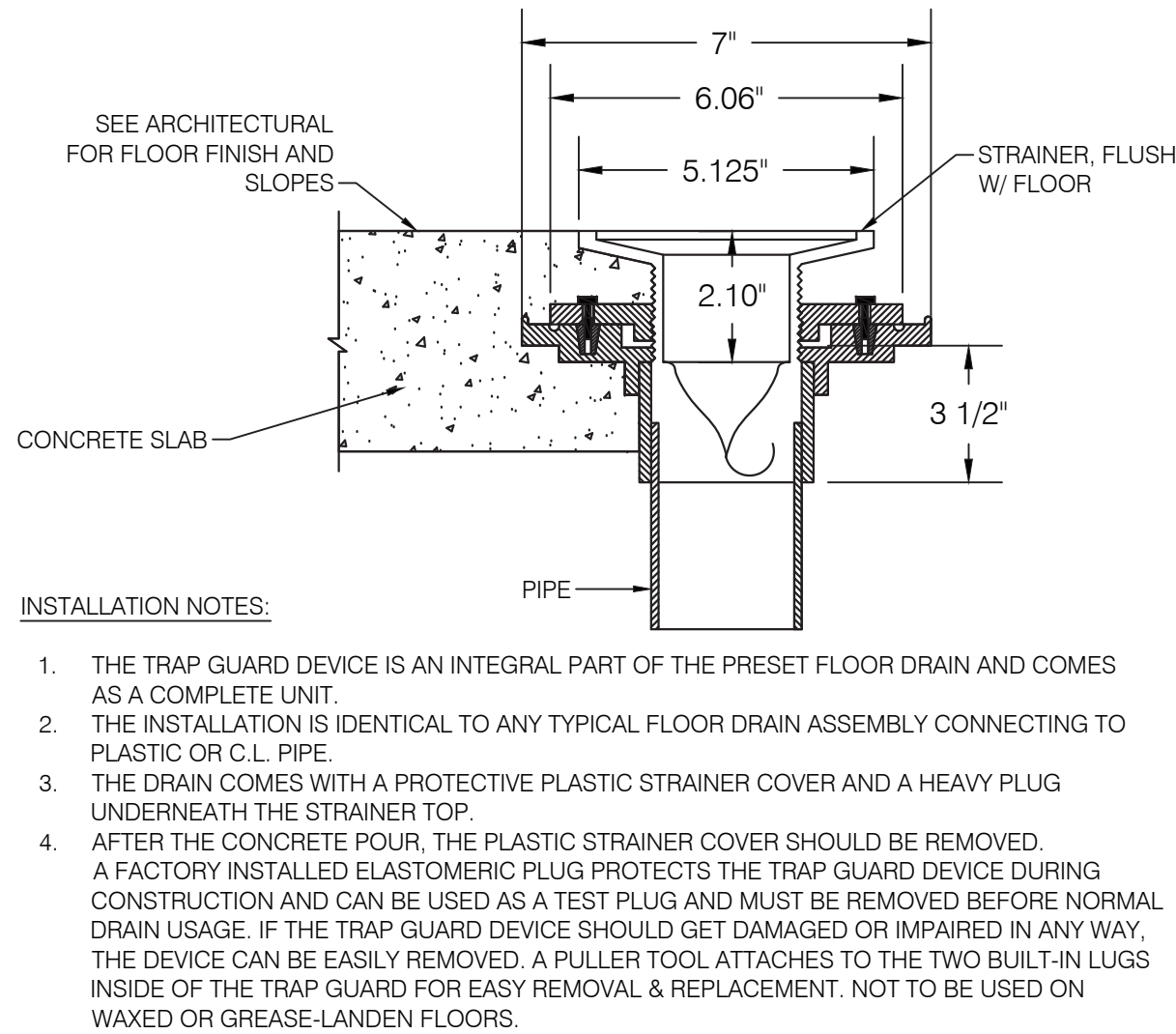
1 PIPE SUPPORT DETAIL
SCALE: NOT TO SCALE



8 PLUMBING VENT THROUGH ROOF DETAIL
SCALE: NOT TO SCALE

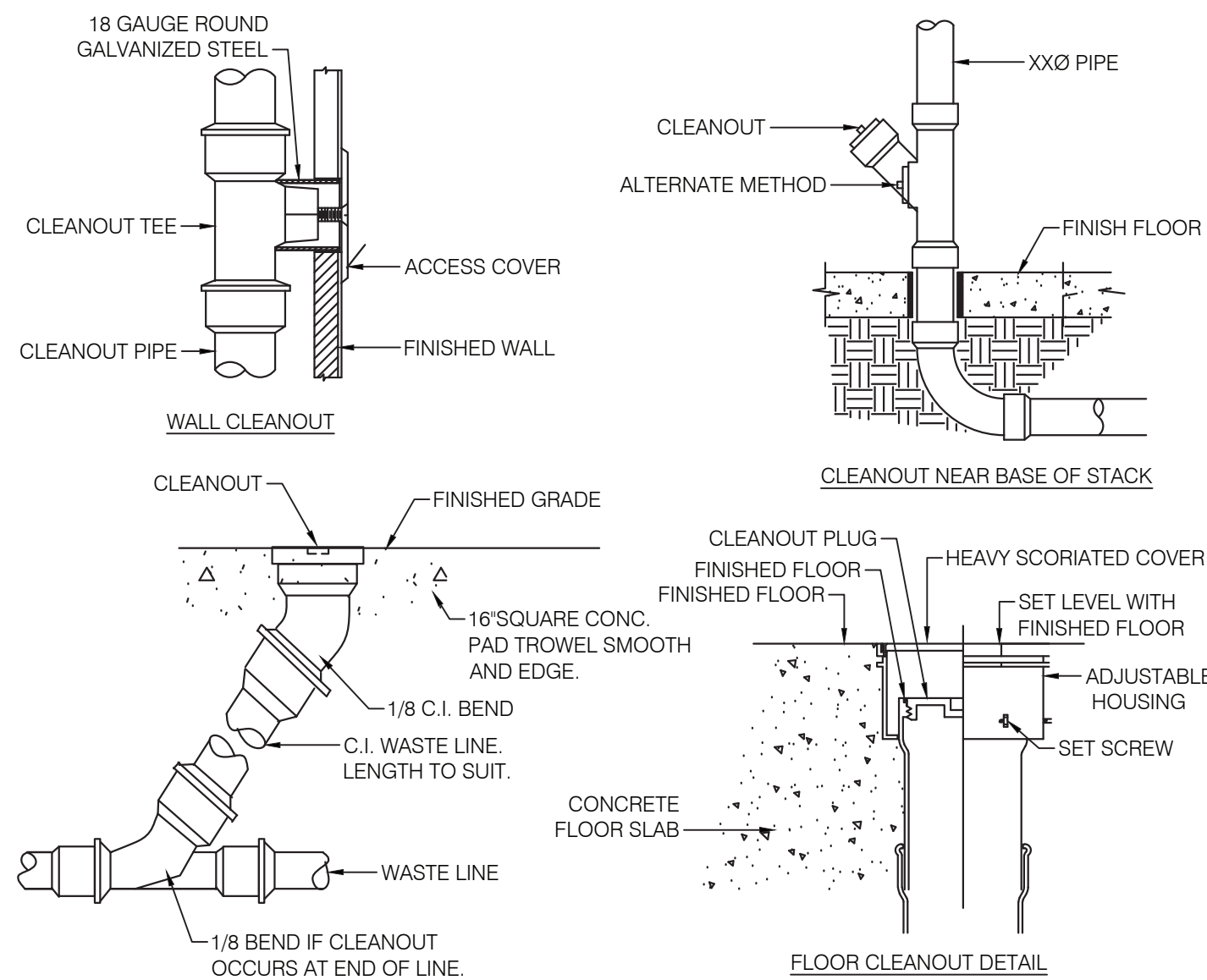


7 DOMESTIC HOT WATER RETURN BALANCING ASSEMBLY
SCALE: NOT TO SCALE



NOTE: CARE SHOULD BE TAKEN NOT TO TOUCH THE FLEXIBLE MATERIAL WITH PRIMER OR SOLVENT CEMENT.

6 TRAP GUARD FLOOR DRAIN DETAIL
SCALE: NOT TO SCALE



5 CLEANOUT DETAILS
SCALE: NOT TO SCALE

Title PLUMBING SCHEDULES AND DETAILS

Date 06-15-2023
Project No. 1944
Drawing By CHS
CHK By EB
Scale AS NOTED

DOB Rev
P-601.00