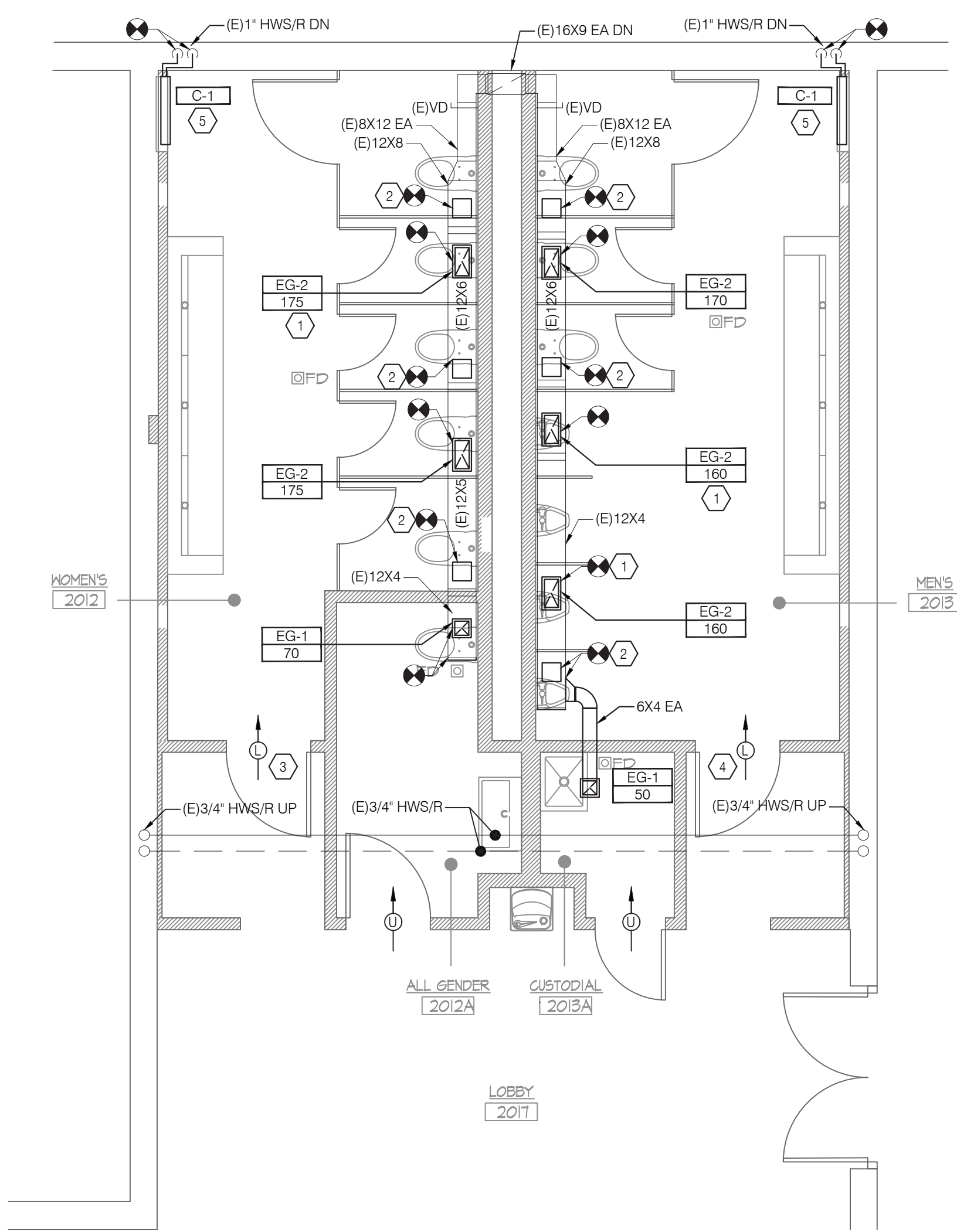


1 SECOND FLOOR PLAN - MECHANICAL REMOVALS
M-101.00 SCALE: 1/4" = 1'-0"



2 SECOND FLOOR PLAN - MECHANICAL NEW WORK
M-101.00 SCALE: 1/4" = 1'-0"

GENERAL NOTES

- EXISTING WORK SHOWN IS BASED ON AVAILABLE DOCUMENTATION AND SPOT CHECKS ON SURVEY. CONTRACTOR TO FIELD VERIFY EXISTING CONDITIONS AND COORDINATE WITH ENGINEER PRIOR TO PROCEEDING WITH WORK.
- THE DEMOLITION PLAN IS INTENDED TO PROVIDE THE CONTRACTOR WITH A GENERAL KNOWLEDGE OF THE EXISTING CONDITIONS WITHIN THE PROJECT AREA.
- CONTRACTOR SHALL SCHEDULE ALL WORK IN ACCORDANCE WITH OWNER'S REQUIREMENTS.
- CONTRACTOR TO FIELD COORDINATE ALL REMOVAL/STORAGE/DISPOSAL OF EXISTING EQUIPMENT WITH THE OWNER.
- CONTRACTOR TO COORDINATE WITH ARCHITECT AND STRUCTURAL ENGINEER TO PATCH AND REPAIR AREAS AFFECTED BY DEMOLITION WORK.
- CONTRACTOR TO REINSTALL ALL THERMOSTATS OR SENSORS AFFECTED BY DEMOLITION.

DEMOLITION KEY NOTES

- REMOVE EXISTING EXHAUST GRILLE AND ASSOCIATED DUCTWORK, ACCESSORIES, FITTINGS, HANGERS AND SUPPORTS FROM POINT OF DISCONNECTION SHOWN.
- REMOVE EXISTING RADIATOR AND ASSOCIATED PIPING, VALVES, SUPPORTS, CONTROLS ETC. PIPING SHALL BE REMOVED UP TO THE POINT OF DISCONNECTION SHOWN IN PLANS.

SHEET KEY NOTES

- PROVIDE EXHAUST GRILLE AT THE LOCATION SHOWN AND COORDINATE WITH ARCH. RCP. (TYP.)
- ALL UNUSED DUCT OPENINGS SHALL BE CAP AND SEALED AIR TIGHT.
- PROVIDE DOOR LOUVER OF 0.7 SQ FT WITH 100% FREE AREA.
- PROVIDE DOOR LOUVER OF 0.9 SQ FT WITH 100% FREE AREA.
- PROVIDE NEW WALL RECESSED CONVECTOR FOR CAPACITIES REFER TO DWG M-601.00. INSTALLATION AND CONTROLS TO MATCH BASE BUILDING STANDARDS. COORDINATE WITH BUILDING ENGINEER.

RESTROOM RENOVATION PURCHASE COLLEGE

STATE UNIVERSITY OF NEW YORK

735 Anderson Hill Rd.
Purchase, NY 10577

PHASE 3:

CAMPUS CENTER NORTH BUILDING
CAMPUS CENTER SOUTH BUILDING
PHYSICAL EDUCATION BUILDING
MAIN DINING HALL

Conditions

ALL IDEAS, DESIGNS, ARRANGEMENTS AND PLANS INDICATED OR REPRESENTED BY THIS DRAWING ARE OWNED BY, AND THE PROPERTY OF RONNETTE RILEY ARCHITECT AND WERE CREATED, DEVELOPED AND DEVELOPED FOR THE USE OF, AND IN CONNECTION WITH THE NONE OF SUCH IDEAS, DESIGNS, ARRANGEMENTS OR PLANS SHALL BE USED BY OR DISCLOSED TO ANY PERSON, FIRM OR CORPORATION FOR ANY PURPOSE WHATSOEVER WITHOUT THE WRITTEN PERMISSION OF RONNETTE RILEY ARCHITECT.

© Copyright Ronnette Riley Architect 2020

Ronnette Riley Architect

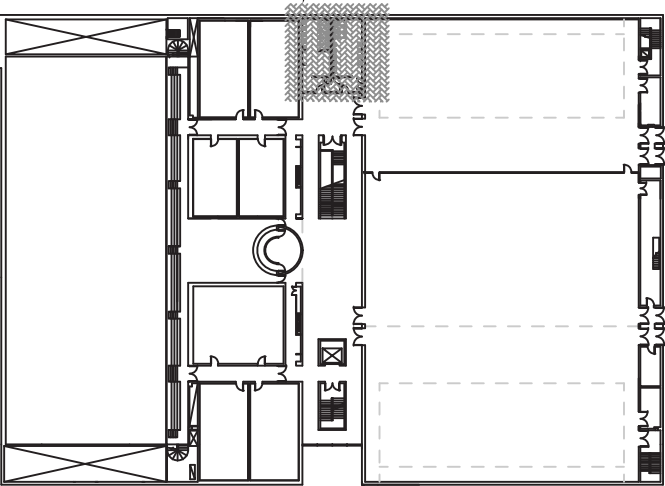
494 Eighth Avenue, 15th Floor
New York, NY 10001
T 212 594 4015
F 212 594 2868
www.ronnetteriley.com

MEP Engineer

SETTY & Associates, Ltd
149 W 36th Street, 8th floor
New York, NY 10018
T 646 253 9000
F 646 224 8497

Rev	Date	Issue
	27 Feb 2023	Issue for Bid

KEY PLAN



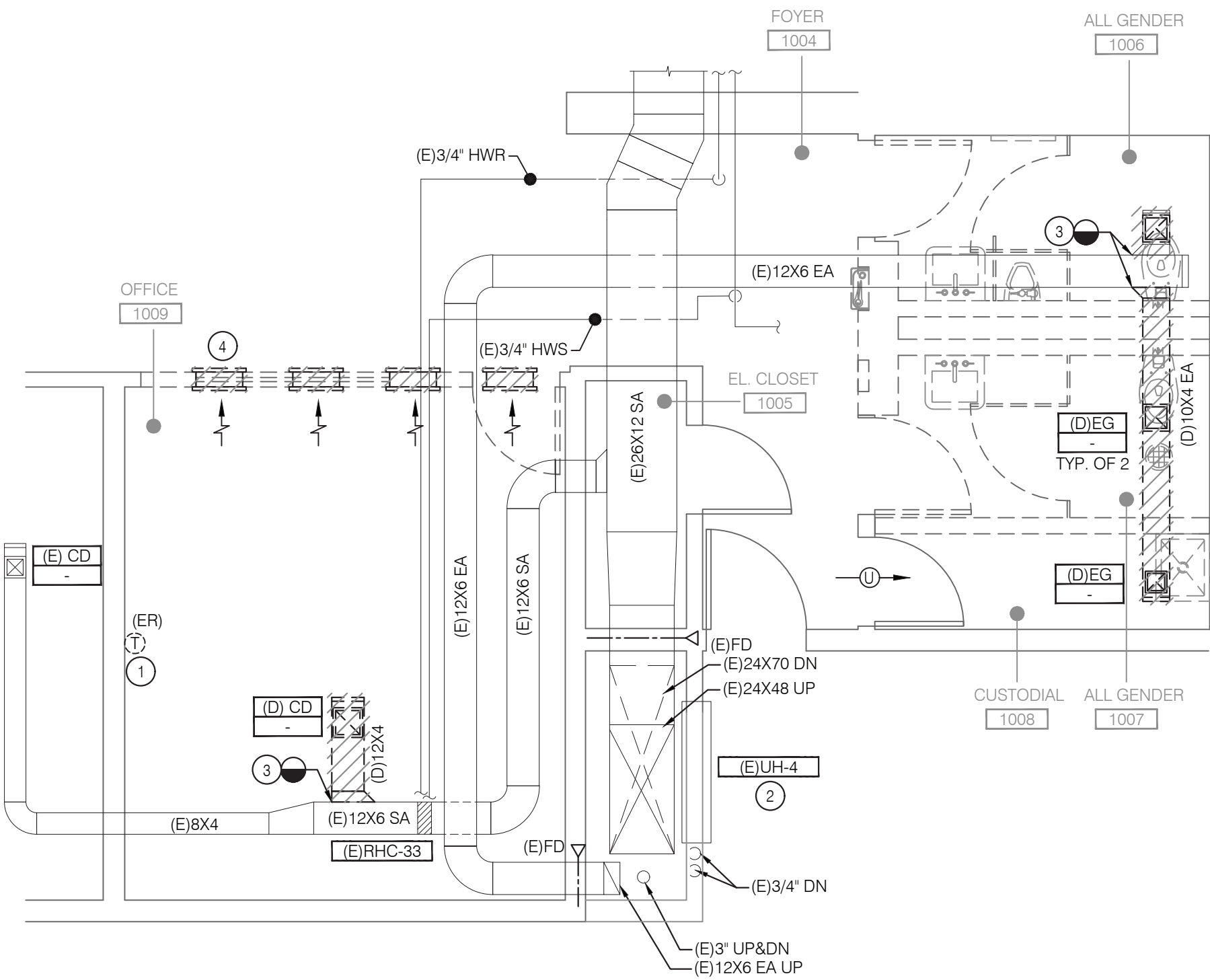
PHYSICAL EDUCATION - MECHANICAL PLANS

Date	02-17-2023
Project No.	1944
Drawing By	AKV
CHK By	BS
Scale	AS NOTED

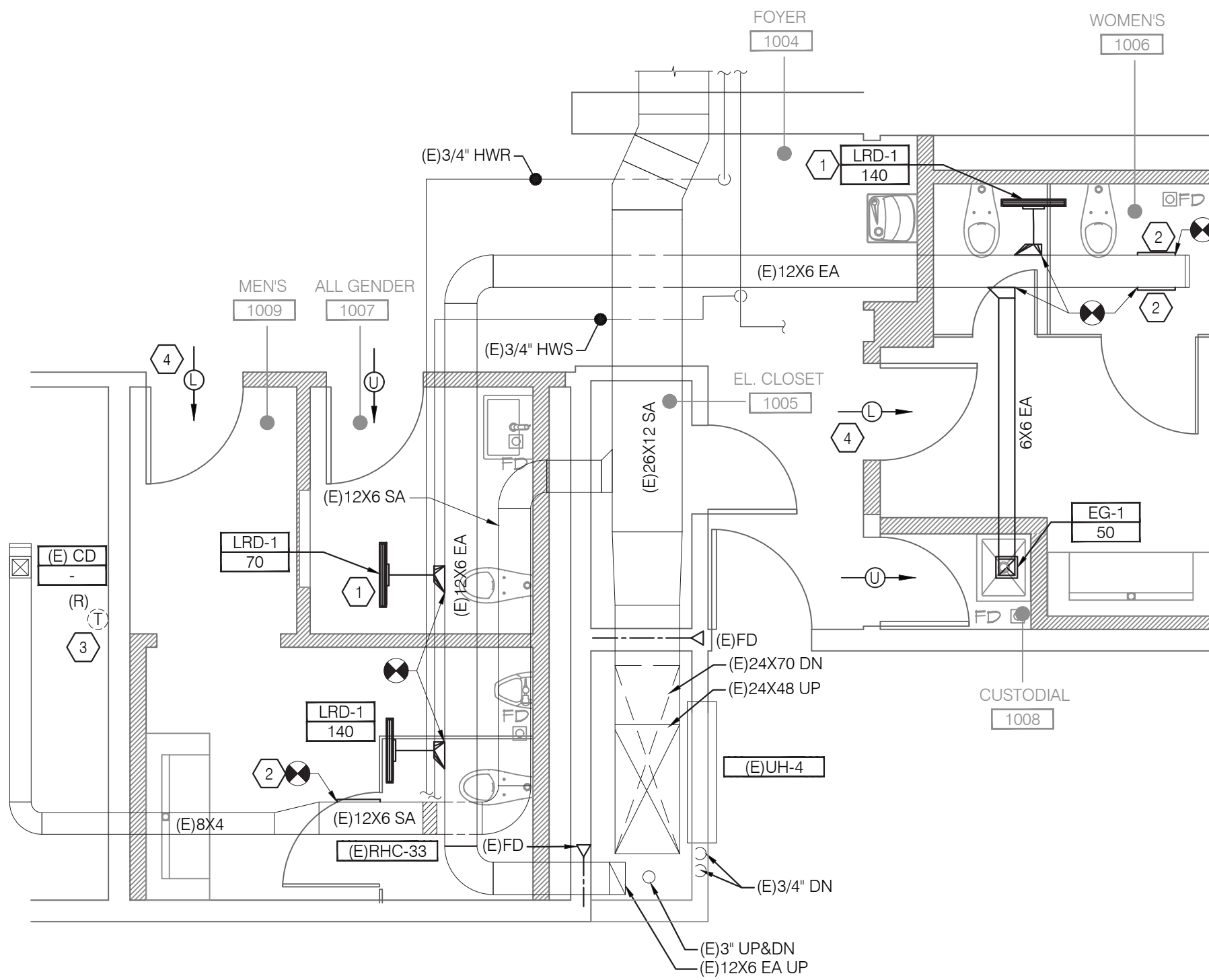
DOB Rev

M-101.00





1 FIRST FLOOR PLAN - MECHANICAL REMOVALS
SCALE: 1/4" = 1'-0"



2 FIRST FLOOR PLAN - MECHANICAL NEW WORK
SCALE: 1/4" = 1'-0"

GENERAL NOTES

- EXISTING WORK SHOWN IS BASED ON AVAILABLE DOCUMENTATION AND SPOT CHECKS ON SURVEY. CONTRACTOR TO FIELD VERIFY EXISTING CONDITIONS AND COORDINATE WITH ENGINEER PRIOR TO PROCEEDING WITH WORK.
- THE DEMOLITION PLAN IS INTENDED TO PROVIDE THE CONTRACTOR WITH A GENERAL KNOWLEDGE OF THE EXISTING CONDITIONS WITHIN THE PROJECT AREA.
- CONTRACTOR SHALL SCHEDULE ALL WORK IN ACCORDANCE WITH OWNER'S REQUIREMENTS.
- CONTRACTOR TO FIELD COORDINATE ALL REMOVAL/STORAGE/DISPOSAL OF EXISTING EQUIPMENT WITH THE OWNER.
- CONTRACTOR TO COORDINATE WITH ARCHITECT AND STRUCTURAL ENGINEER TO PATCH AND REPAIR AREAS AFFECTED BY DEMOLITION WORK.

DEMOLITION KEY NOTES

- RELOCATE EXISTING THERMOSTAT, SEE NEW WORK PLAN ON DWG. 2/M-101.00 FOR EXACT LOCATION.
- EXISTING UNIT HEATER AND ASSOCIATED PIPING, VALVES, ENCLOSURE, SUPPORTS, CONTROLS ETC. TO REMAIN UNLESS OTHERWISE NOTED.
- REMOVE EXISTING SUPPLY/EXHAUST GRILLE AND ASSOCIATED DUCTWORK, ACCESSORIES, FITTINGS, HANGERS AND SUPPORTS FROM POINT OF DISCONNECTION SHOWN.
- REMOVE EXISTING TRANSFER GRILLE AND ASSOCIATED DUCTWORK, ACCESSORIES, FITTINGS, HANGERS AND SUPPORTS.

SHEET KEY NOTES

- PROVIDE EXHAUST LINEAR DIFFUSER AT THE LOCATION SHOWN AND COORDINATE WITH ARCH. RCP. (TYP.)
- ALL UNUSED DUCT OPENINGS SHALL BE CAP AND SEALED AIR TIGHT.
- PROVIDE A NEW CONTROL WIRING FROM THE RELOCATED THERMOSTAT TO EXISTING RHC-33.
- PROVIDE DOOR LOUVER OF 0.3 SQ FT WITH 100% FREE AREA.

RESTROOM RENOVATION PURCHASE COLLEGE

STATE UNIVERSITY OF NEW YORK

735 Anderson Hill Rd.
Purchase, NY 10577

PHASE 3:

CAMPUS CENTER NORTH BUILDING
CAMPUS CENTER SOUTH BUILDING
PHYSICAL EDUCATION BUILDING
MAIN DINING HALL

Conditions

ALL IDEAS, DESIGNS, ARRANGEMENTS AND PLANS INDICATED OR REPRESENTED BY THIS DRAWING ARE OWNED BY, AND THE PROPERTY OF RONNETTE RILEY ARCHITECT AND WERE CREATED, DEVELOPED AND DEVELOPED FOR THE USE OF, AND IN CONNECTION WITH THE NONE OF SUCH IDEAS, DESIGNS, ARRANGEMENTS OR PLANS SHALL BE USED BY OR DISCLOSED TO ANY PERSON, FIRM OR CORPORATION FOR ANY PURPOSE WHATSOEVER WITHOUT THE WRITTEN PERMISSION OF RONNETTE RILEY ARCHITECT.

© Copyright Ronnette Riley Architect 2020

Ronnette Riley Architect

494 Eighth Avenue, 15th Floor
New York, NY 10001
T 212 594 4015
F 212 594 2868
www.ronnettenriley.com

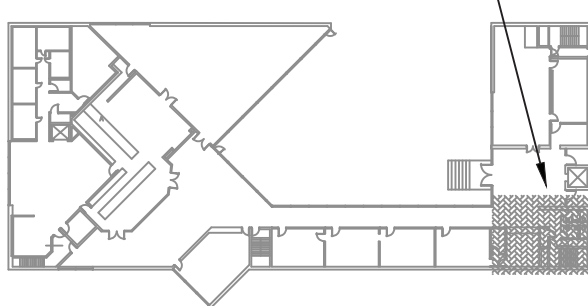
MEP Engineer

SETTY & Associates, Ltd
149 W 36th Street, 8th floor
New York, NY 10018
T 646 253 9000
F 646 224 8497

Rev	Date	Issue
	27 Feb 2023	Issue for Bid

KEY PLAN

AREA OF WORK



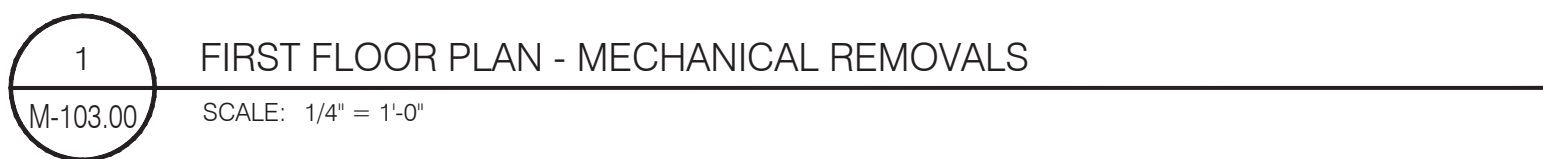
Title
CAMPUS CENTER NORTH -
MECHANICAL PLANS

Date	02-17-2023
Project No.	1944
Drawing By	AKV
CHK By	BS
Scale	AS NOTED

DOB Rev

M-102.00

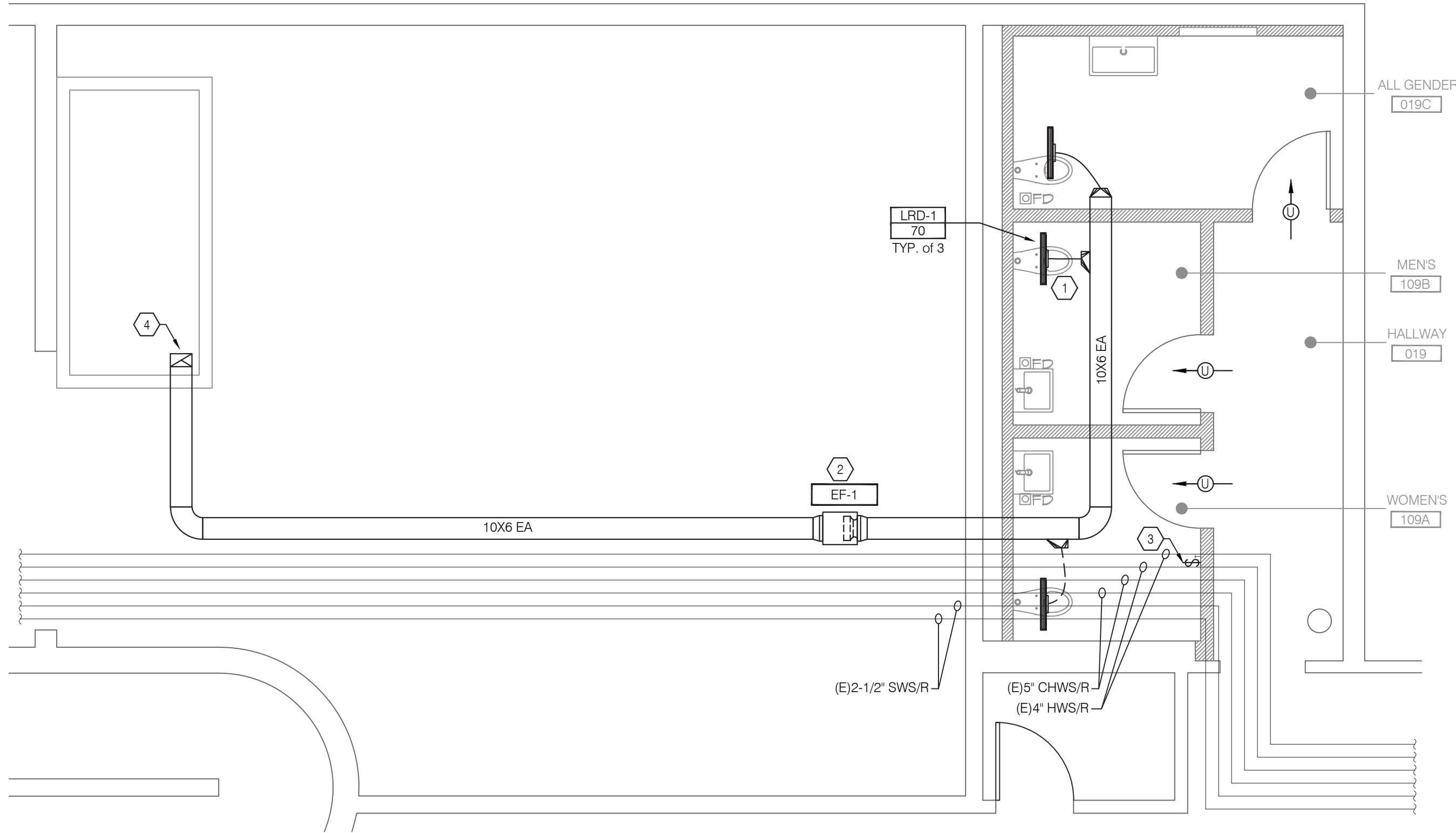
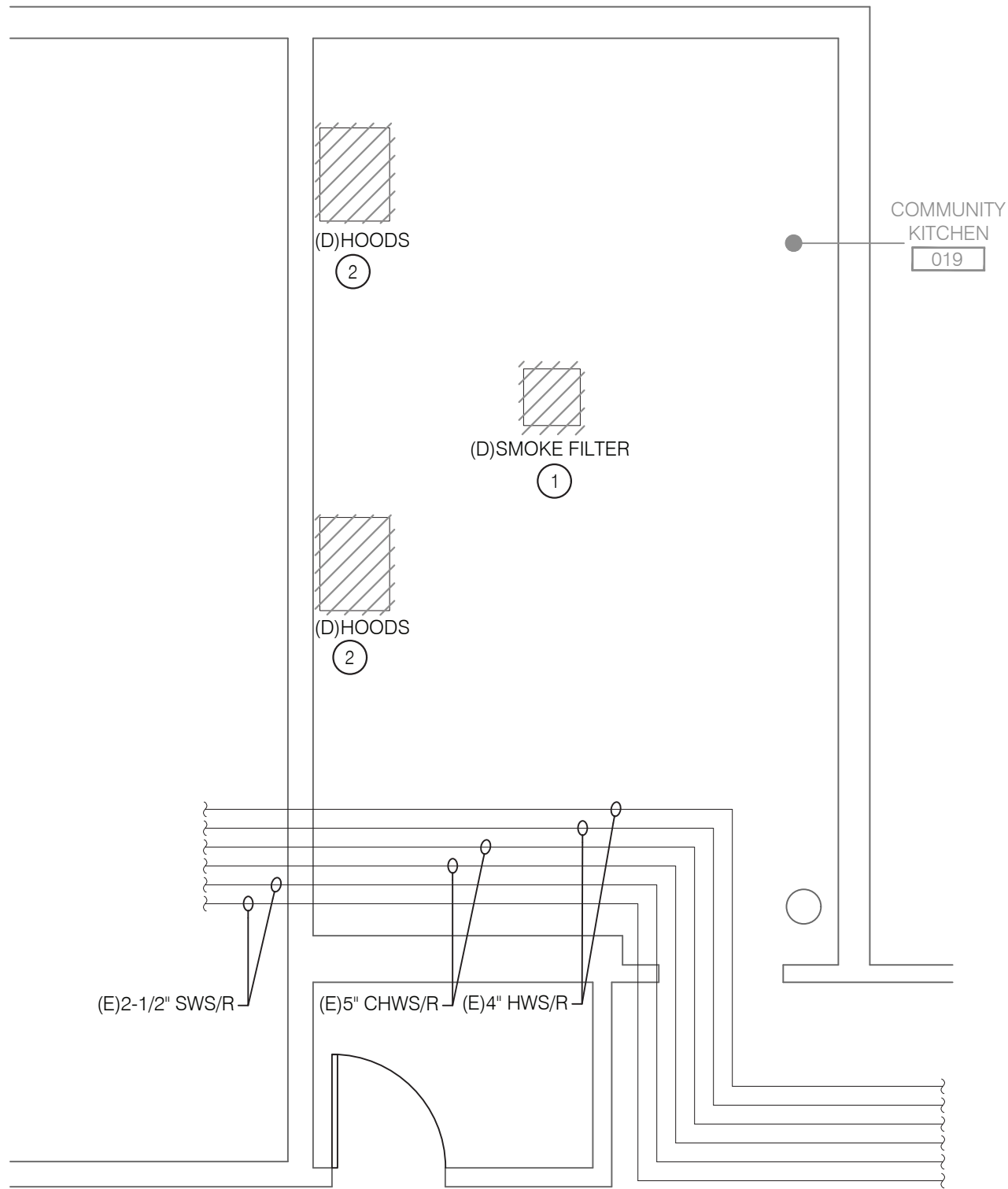




1. PROVIDE EXHAUST LINEAR DIFFUSER AT THE LOCATION SHOWN AND COORDINATE WITH ARCH. RCP. (TYP.)
2. ALL UNUSED DUCT OPENINGS SHALL BE CAP AND SEALED AIR TIGHT.
3. PROVIDE A NEW CONTROL WIRING FROM THE RELOCATED THERMOSTAT TO EXISTING RH-24.
4. TAB CONTRACTOR TO BALANCE RELOCATED SUPPLY AIR GRILLE TO AIRFLOW SHOWN ON PLANS.
5. PROVIDE DOOR LOUVER OF 0.3 SQ FT WITH 100% FREE AREA.

DOB Rev
M-103.00





1 FIRST FLOOR PLAN - MECHANICAL REMOVALS
M-104.00 SCALE: 1/4" = 1'-0"

2 FIRST FLOOR PLAN - MECHANICAL NEW WORK
M-104.00 SCALE: 1/4" = 1'-0"

GENERAL NOTES

- EXISTING WORK SHOWN IS BASED ON AVAILABLE DOCUMENTATION AND SPOT CHECKS ON SURVEY. CONTRACTOR TO FIELD VERIFY EXISTING CONDITIONS AND COORDINATE WITH ENGINEER PRIOR TO PROCEEDING WITH WORK.
- THE DEMOLITION PLAN IS INTENDED TO PROVIDE THE CONTRACTOR WITH A GENERAL KNOWLEDGE OF THE EXISTING CONDITIONS WITHIN THE PROJECT AREA.
- CONTRACTOR SHALL SCHEDULE ALL WORK IN ACCORDANCE WITH OWNER'S REQUIREMENTS.
- CONTRACTOR TO FIELD COORDINATE ALL REMOVAL/STORAGE/DISPOSAL OF EXISTING EQUIPMENT WITH THE OWNER.
- CONTRACTOR TO COORDINATE WITH ARCHITECT AND STRUCTURAL ENGINEER TO PATCH AND REPAIR AREAS AFFECTED BY DEMOLITION WORK.

DEMOLITION KEY NOTES

- EXISTING SMOKE FILTER AND ITS ASSOCIATED SUPPORT AND ACCESSORIES TO BE REMOVED.
- EXISTING HOODS AND ITS ASSOCIATED SUPPORT, WIRING AND CONTROLS TO BE REMOVED.

SHEET KEY NOTES

- PROVIDE EXHAUST LINEAR DIFFUSER AT THE LOCATION SHOWN AND COORDINATE WITH ARCH. RCP. (TYP.)
- PROVIDE NEW INLINE EXHAUST FAN SUPPORTED FROM SLAB/CEILING AT 8'-0" AFF. REFER M-601.00 FOR EXHAUST FAN SCHEDULE AND DETAIL.
- PROVIDE CONTROLLER SWITCH INTERLOCK WITH EF-1.
- PROVIDE 10X6 EA DUCT UP TO PLATFORM(GRATE) AND DISCHARGE THE AIR WITH GOOSENECK.

RESTROOM RENOVATION PURCHASE COLLEGE

STATE UNIVERSITY OF NEW YORK

735 Anderson Hill Rd.
Purchase, NY 10577

PHASE 3:

CAMPUS CENTER NORTH BUILDING
CAMPUS CENTER SOUTH BUILDING
PHYSICAL EDUCATION BUILDING
MAIN DINING HALL

Conditions

ALL IDEAS, DESIGNS, ARRANGEMENTS AND PLANS INDICATED OR REPRESENTED BY THIS DRAWING ARE OWNED BY, AND THE PROPERTY OF RONNETTE RILEY ARCHITECT AND WERE CREATED, DEVELOPED AND DEVELOPED FOR THE USE OF, AND IN CONNECTION WITH THE NONE OF SUCH IDEAS, DESIGNS, ARRANGEMENTS OR PLANS SHALL BE USED BY OR DISCLOSED TO ANY PERSON, FIRM OR CORPORATION FOR ANY PURPOSE WHATSOEVER WITHOUT THE WRITTEN PERMISSION OF RONNETTE RILEY ARCHITECT.

© Copyright Ronnette Riley Architect 2020

Ronnette Riley Architect

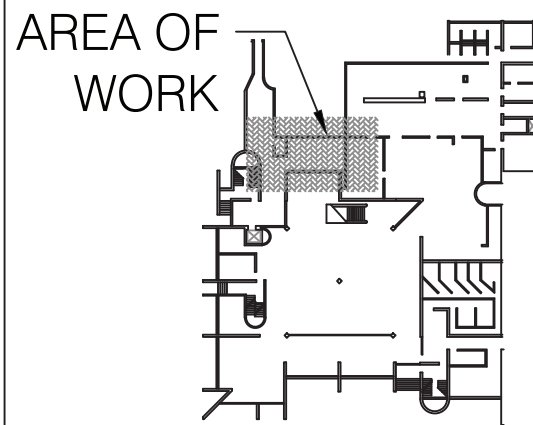
494 Eighth Avenue, 15th Floor
New York, NY 10001
T 212 594 4015
F 212 594 2868
www.ronnetteriley.com

MEP Engineer

SETTY & Associates, Ltd
149 W 36th Street, 8th floor
New York, NY 10018
T 646 253 9000
F 646 224 8497

Rev	Date	Issue
	27 Feb 2023	Issue for Bid

KEY PLAN



Title MAIN DINING HALL - MECHANICAL PLANS

Date	02-17-2023
Project No.	1944
Drawing By	AKV
CHK By	BS
Scale	AS NOTED

DOB Rev

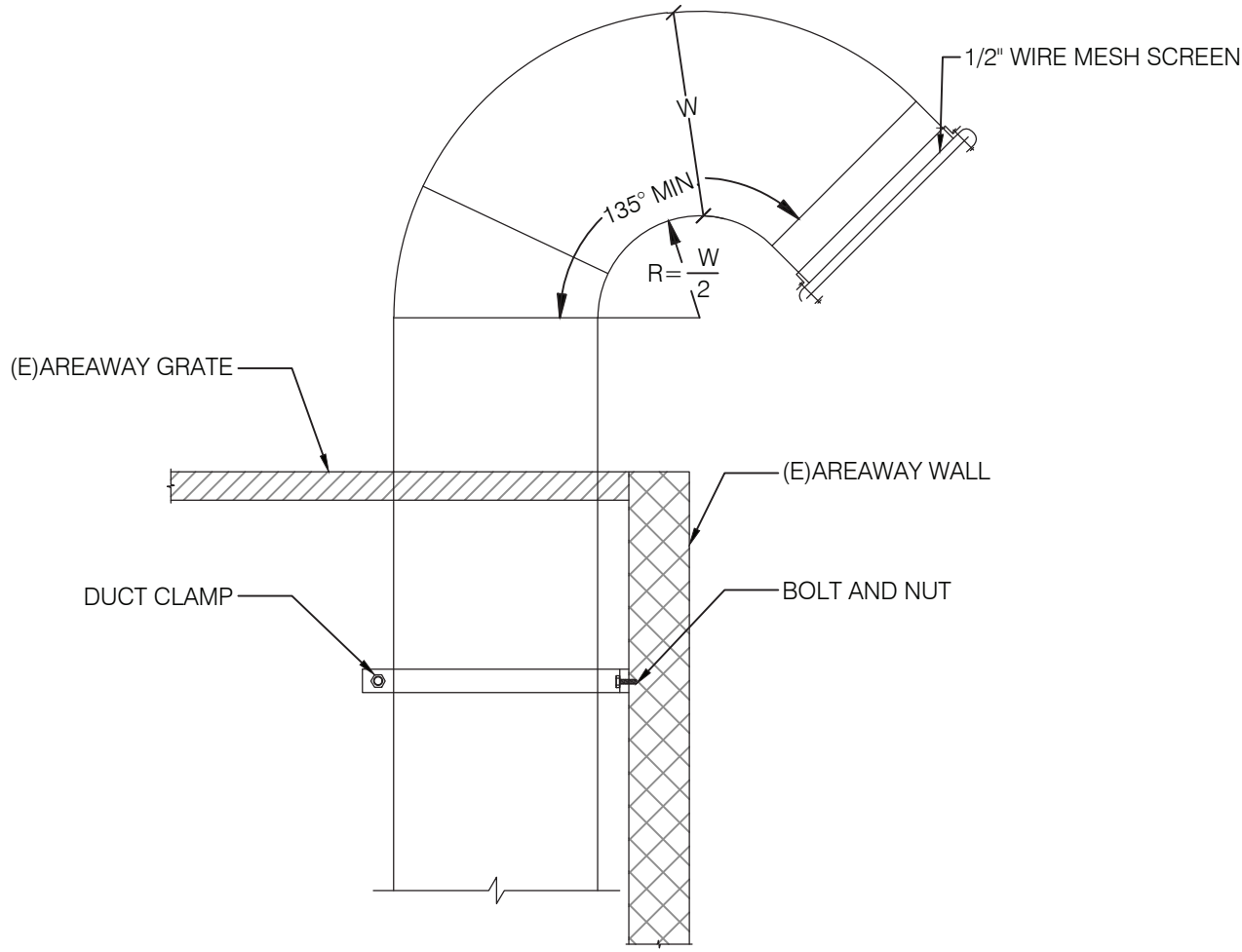
M-104.00



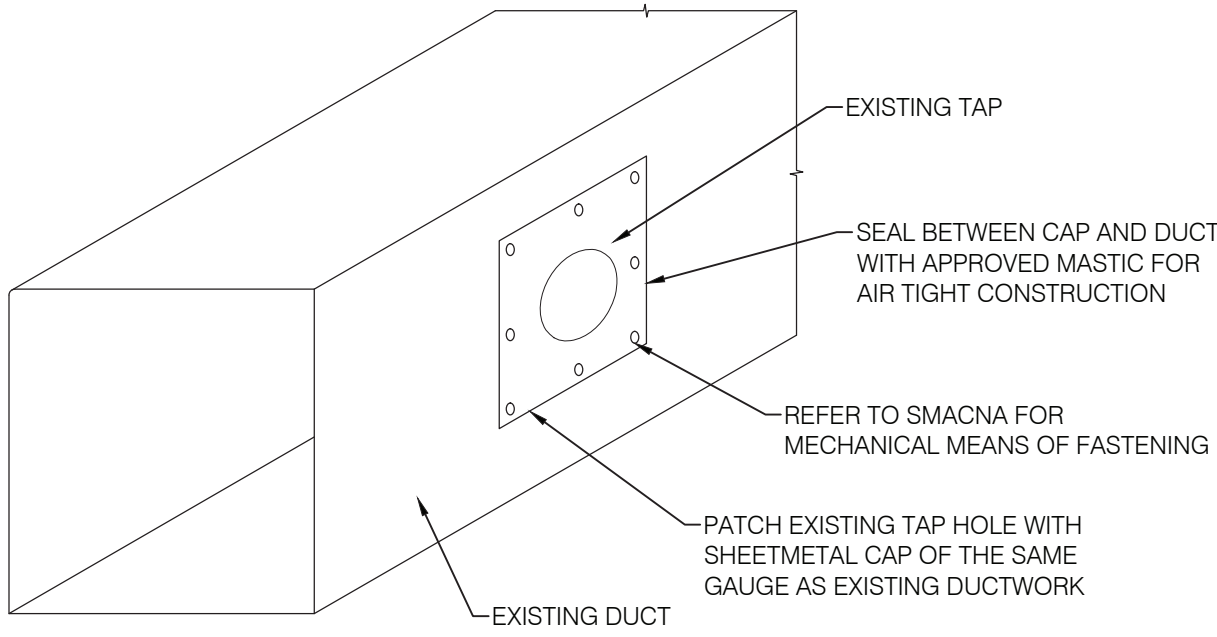
AIR DEVICE SCHEDULE										
UNIT MARK	AIR FLOW RANGE (CFM)	MAX. SP (IN WG)	MAX. NC	DEVICE TYPE	SIZE			BASIS OF DESIGN		NOTES
					NECK (IN)	MODULE (IN)	NO. OF SLOTS	MANUFACTURER	MODEL	
LRD-1	70/LF	0.1	22	LINEAR SLOT DIFFUSER	6	24X2.5	2	TITUS	MLR39	1, 2, 3
EG-1	0-70	0.1	10	EXHAUST GRILLE	6X6	8X8	-	TITUS	350RL	1, 2
EG-2	70-210	0.1	11	EXHAUST GRILLE	12X6	14X8	-	TITUS	350RL	1, 2
NOTES: 1. PROVIDE OPPOSED BLADE DAMPERS IN ALL DIFFUSERS & GRILLES WITH SCREWDRIVER ADJUSTMENT ACCESSIBLE THROUGH FACE OF THE GRILLE. 2. DIFFUSER/GRILLES SHALL BE TESTED IN ACCORDANCE WITH ANSI/ASHRAE STANDARD 70-2006. 3. ALL ML TYPE LINEAR SUPPLY/RETURN DIFFUSERS SHALL BE PROVIDED WITH MP TYPE PLENUM BOX.										

CONVECTOR SCHEDULE											
UNIT MARK	TYPE	SIZE			MBH	GPM	EWT (°F)	TEMP DROP (°F)	BASIS OF DESIGN		NOTES
		LENGTH	DEPTH	HEIGHT					MANUFACTURER	MODEL	
C-1	RECESSED	29"	4"	17"	1.5	0.40	190	20	TRANE	RG	1, 2, 3
NOTES: 1. UNIT SHALL BE INSTALLED AS PER MANUFACTURER'S RECOMMENDATION. 2. COLOR AS SPECIFIED BY ARCHITECT. 3. PROVIDE SHUT-OFF VALVES, CIRCUIT SETTER, TEST PORTS AND INLET STRAINERS.											

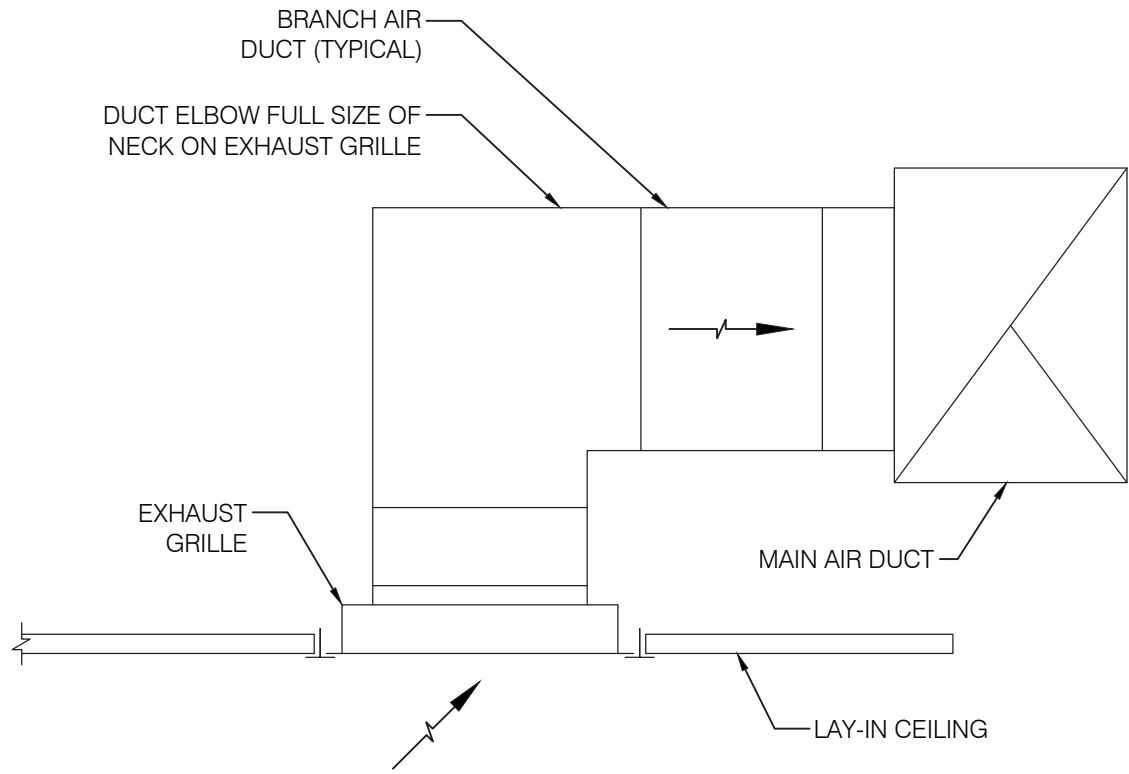
FAN SCHEDULE																			
UNIT MARK	SERVICE	BUILDING	LOCATION	FAN				MOTOR			DAMPER		EMERGENCY POWER (Y/N)	CONTROL	SONES	UNIT WEIGHT (LBS)	BASIS OF DESIGN		NOTES
				TYPE	AIRFLOW(CFM)	E.S..P(IN WC)	DRIVE TYPE	HP	RPM	VOLTS/PH/Hz	BACK DRAFT	MOTORIZED					MANUFACTURER	MODEL	
EF-1	TOILETS	MAIN DINING HALL	FIRST FLOOR	INLINE	210	0.5	DIRECT	0.06	1565	115/1/60	Y	N	N	SWITCH OPERATED	6.6	50	GREENHECK	SQ-80-VG	1,2,3,4
NOTES: 1. UNIT SHALL BE INSTALLED AS PER MANUFACTURER'S RECOMMENDATION. 2. FAN SHALL BE LISTED BY UNDERWRITERS LABORATORIES (UL 705) AND SHALL BEAR THE AMCA CERTIFIED RATINGS. 3. UNIT CLEARANCE SHALL BE PROVIDED AS PER MANUFACTURER'S RECOMMENDATION. 4. PROVIDE EXHAUST FANS WITH BACKDRAFT DAMPER.																			



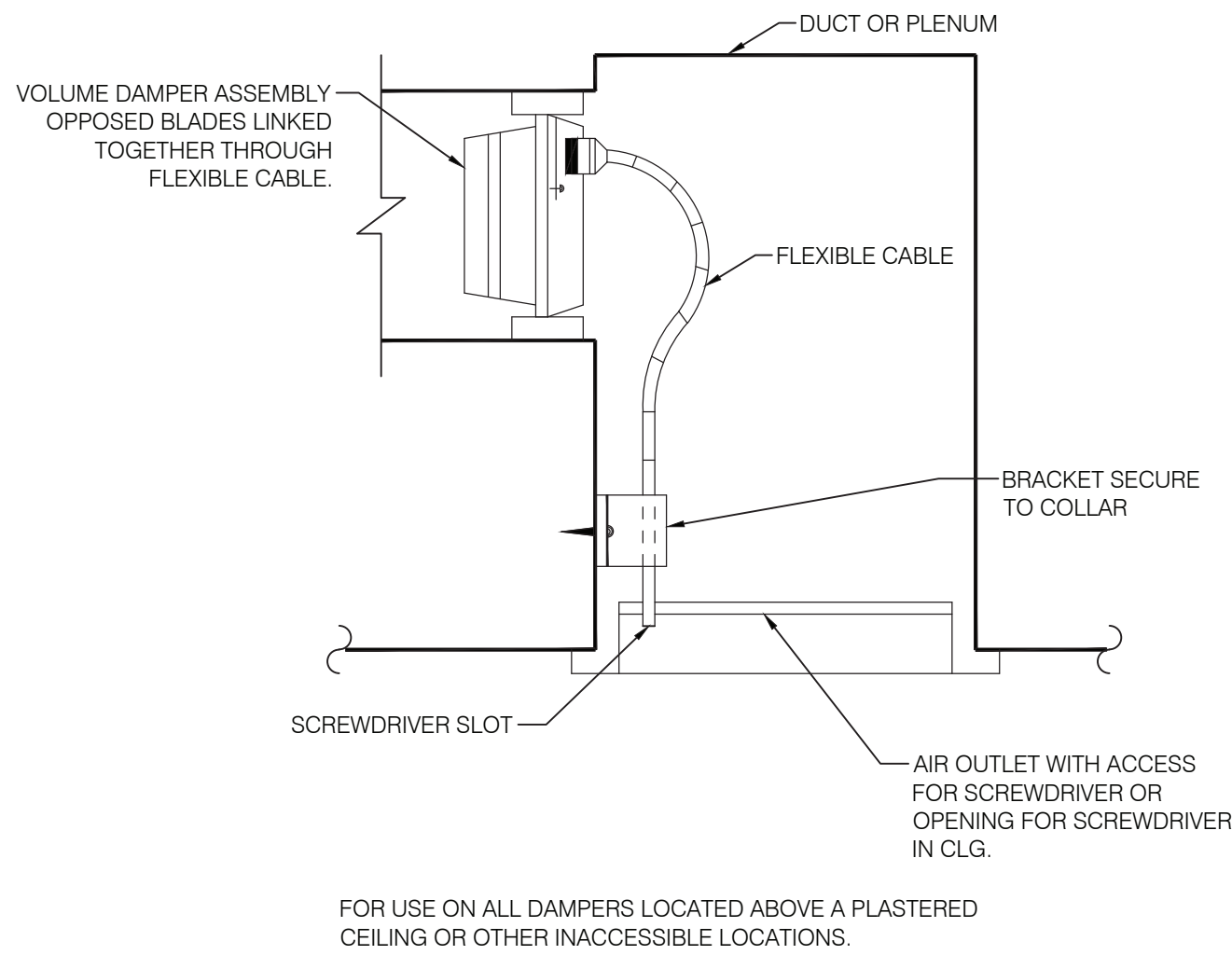
7 GOOSENECK
M-601.00 SCALE: NOT TO SCALE



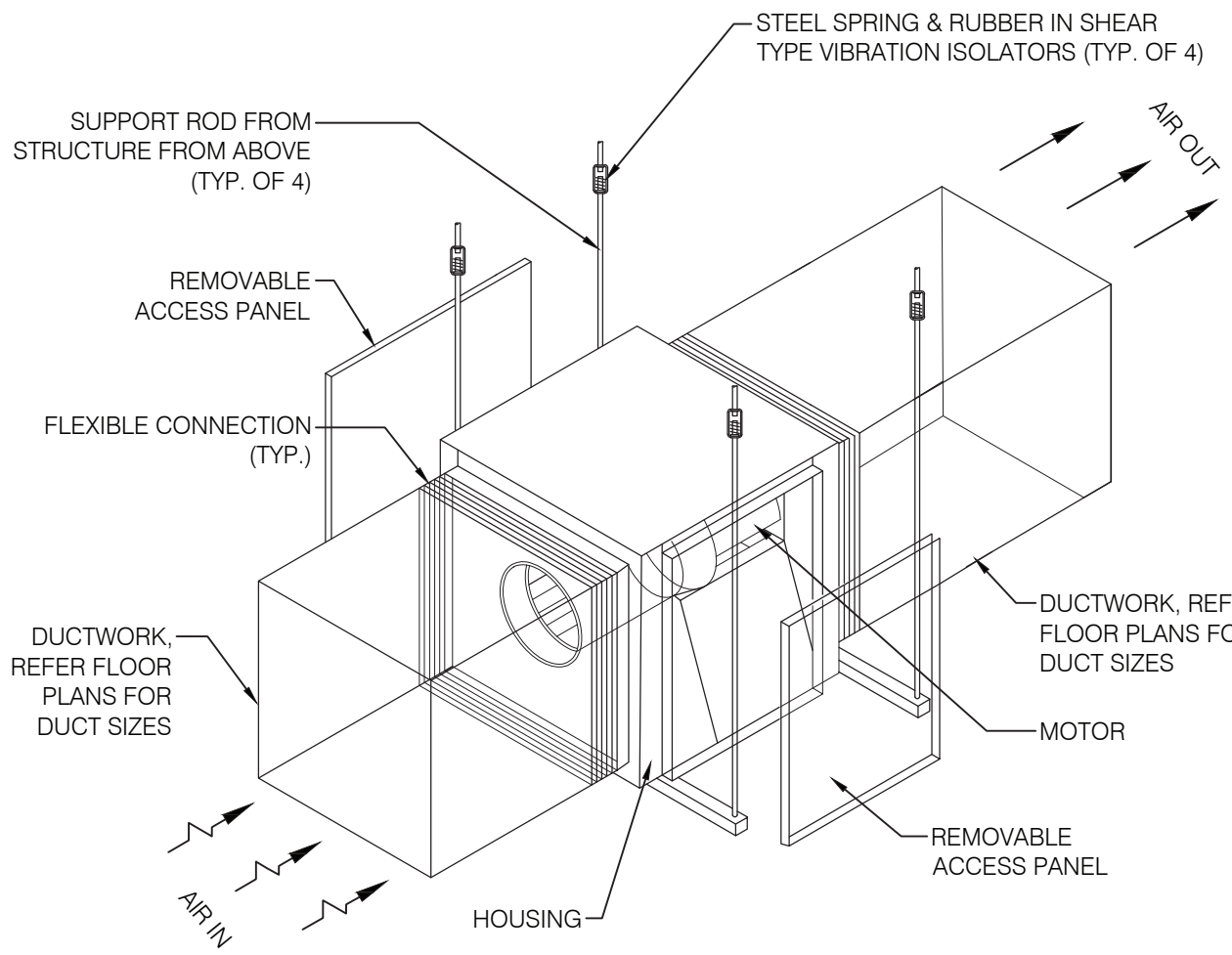
5 PATCHING AND SEALING EXISTING DUCT TAP
M-601.00 SCALE: NOT TO SCALE



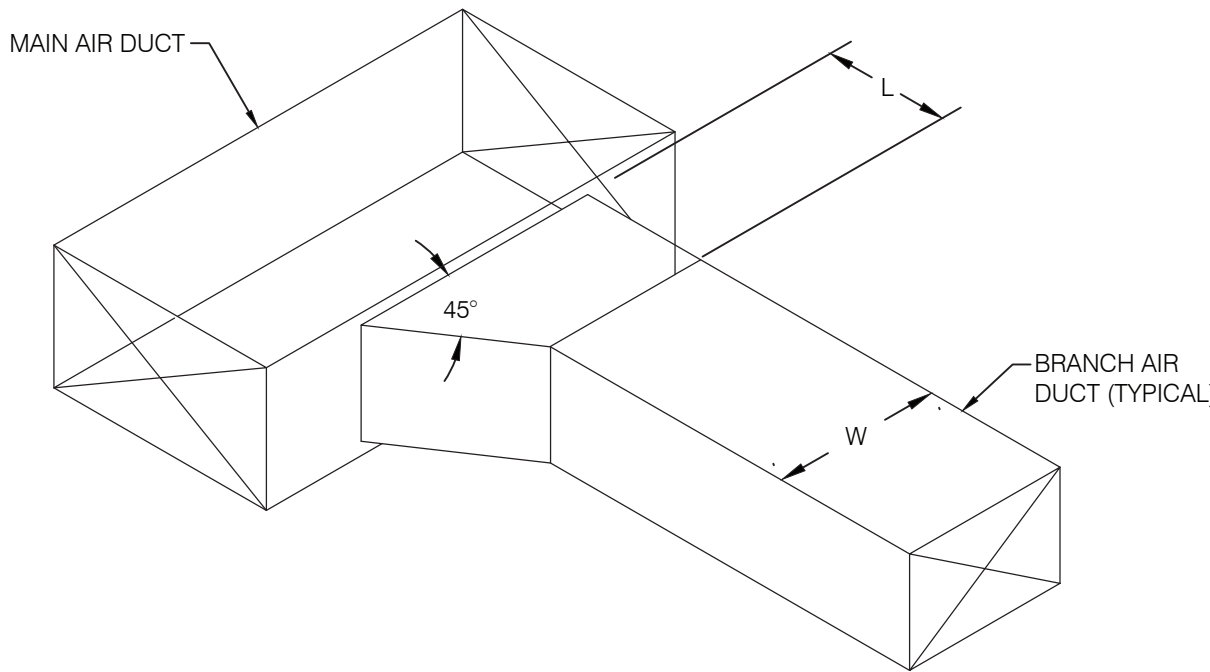
3 GRILLE CONNECTION DETAIL
M-601.00 SCALE: NOT TO SCALE



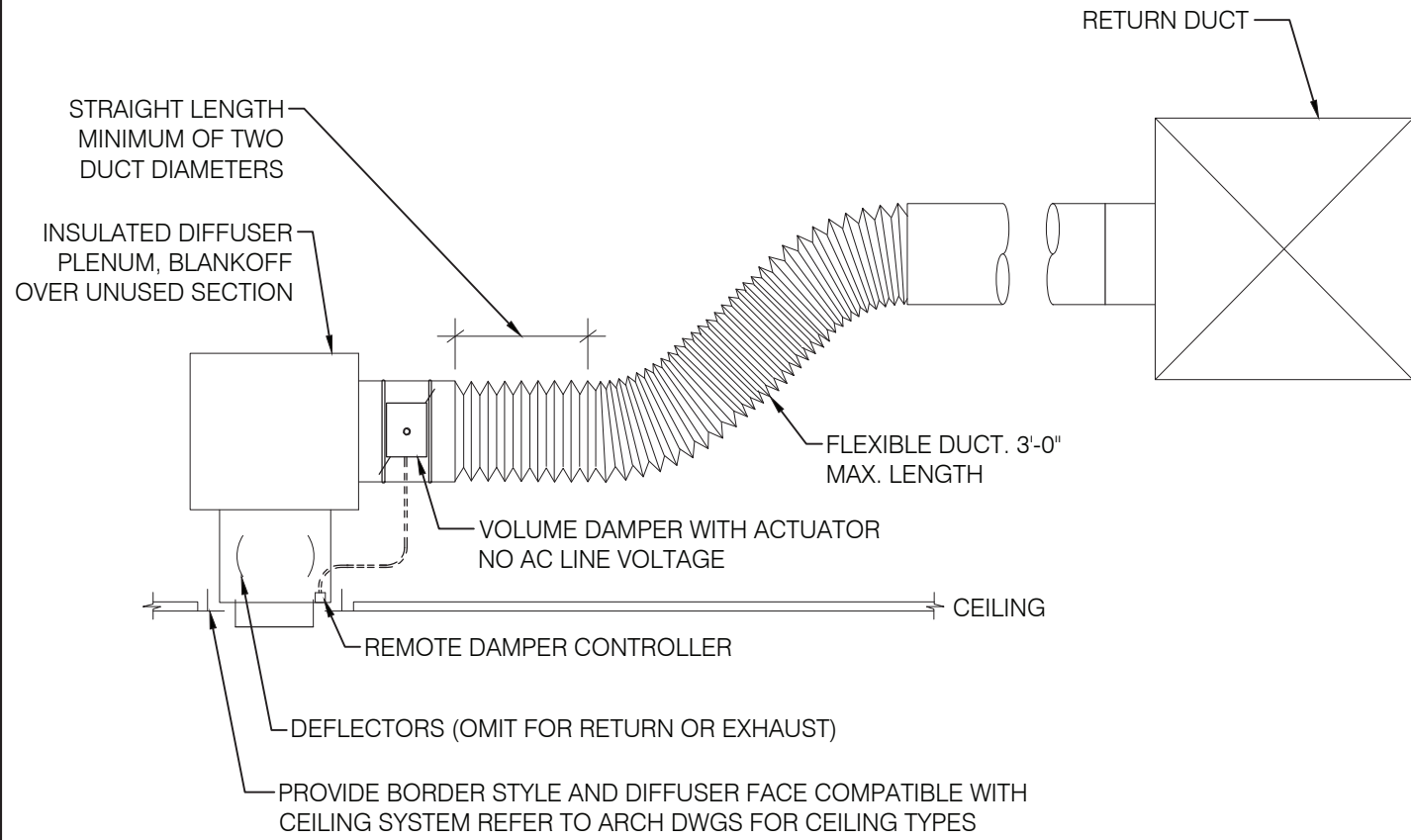
1 REMOTE DAMPER OPERATOR FOR INACCESSIBLE DAMPER
M-601.00 SCALE: NOT TO SCALE



8 INLINE FAN INSTALLATION (DIRECT DRIVE)
M-601.00 SCALE: NOT TO SCALE



6 EXHAUST AIR DUCT CONNECTION DETAIL
M-601.00 SCALE: NOT TO SCALE



4 LINEAR CEILING DIFFUSER (SLOT-TYPE) INSTALLATION (WITH FLEX)
M-601.00 SCALE: NOT TO SCALE

TABLE 1 ALLOWABLE HANGER LOAD (MAX)				TABLE 2 TRAPEZE ANGLE LOAD (MAX)			
STRAPS	LBS	RODS	LBS	L	2" x 2" x 1/4"	2 1/2" x 2 1/2" x 1/4"	LBS
2-1"x22 GA	520	2-1/4" Ø	540	36"	1200 LBS	1940 LBS	
2-1"x20 GA	640	2-3/8" Ø	1360	48"	1160 LBS	1900 LBS	
2-1"x18 GA	840	2-1/2" Ø	2500	60"	1060 LBS	1800 LBS	
2-1"x16 GA	1400	2-5/8" Ø	4000	72"	900 LBS	1640 LBS	
		2-3/4" Ø	6000	84"	660 LBS	1400 LBS	
				96"	320 LBS	1060 LBS	

2 RECTANGULAR DUCT HANGERS
M-601.00 SCALE: NOT TO SCALE

RESTROOM RENOVATION PURCHASE COLLEGE

STATE UNIVERSITY OF NEW YORK

735 Anderson Hill Rd.
Purchase, NY 10577

PHASE 3:

CAMPUS CENTER NORTH BUILDING
CAMPUS CENTER SOUTH BUILDING
PHYSICAL EDUCATION BUILDING
MAIN DINING HALL

Conditions

ALL IDEAS, DESIGNS, ARRANGEMENTS AND PLANS INDICATED OR REPRESENTED BY THIS DRAWING ARE OWNED BY, AND THE PROPERTY OF RONNETTE RILEY ARCHITECT AND WERE CREATED, DEVELOPED AND DEVELOPED FOR THE USE OF, AND IN CONNECTION WITH THE NONE OF SUCH IDEAS, DESIGNS, ARRANGEMENTS OR PLANS SHALL BE USED BY OR DISCLOSED TO ANY PERSON, FIRM OR CORPORATION FOR ANY PURPOSE WHATSOEVER WITHOUT THE WRITTEN PERMISSION OF RONNETTE RILEY ARCHITECT.

© Copyright Ronnette Riley Architect 2020

Ronnette Riley *Architect*

494 Eighth Avenue, 15th Floor
New York, NY 10001
T 212 594 4015
F 212 594 2868
www.ronnetteriley.com

MEP Engineer

SETTY & Associates, Ltd
149 W 36th Street, 8th floor
New York, NY 10018
T 646 253 9000
F 646 224 8497

Rev Date Issue
27 Feb 2023 Issue for Bid

Title MECHANICAL SCHEDULES AND DETAILS

Date 02-17-2023
Project No. 1944
Drawing By AKV
CHK By BS
Scale AS NOTED

DOB Rev
M-601.00