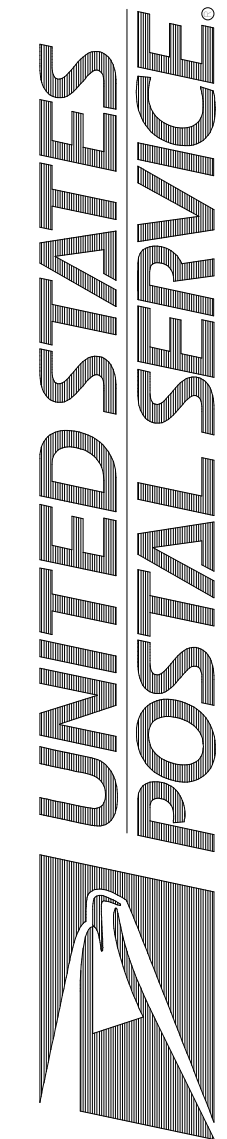


NOT FOR  
CONSTRUCTION

PROJECT MANAGER	DESIGNER
JR	AS
DWG NO.	2022359.04

USPS - MID-HUDSON, NY  
99 GOVERNOR DRIVE  
NEWBURGH, NY 12550



Facilities: 4301 Wilson Blvd., Suite 300, Arlington, VA 22203-1861

E-201.1 ELECTRICAL - POWER PLAN - AREA 'A'

Scale: NTS  
Project: USPS - MID-HUDSON, NY  
USPS File Number: 355006-02

Revisions: 100% OWNER REVIEW

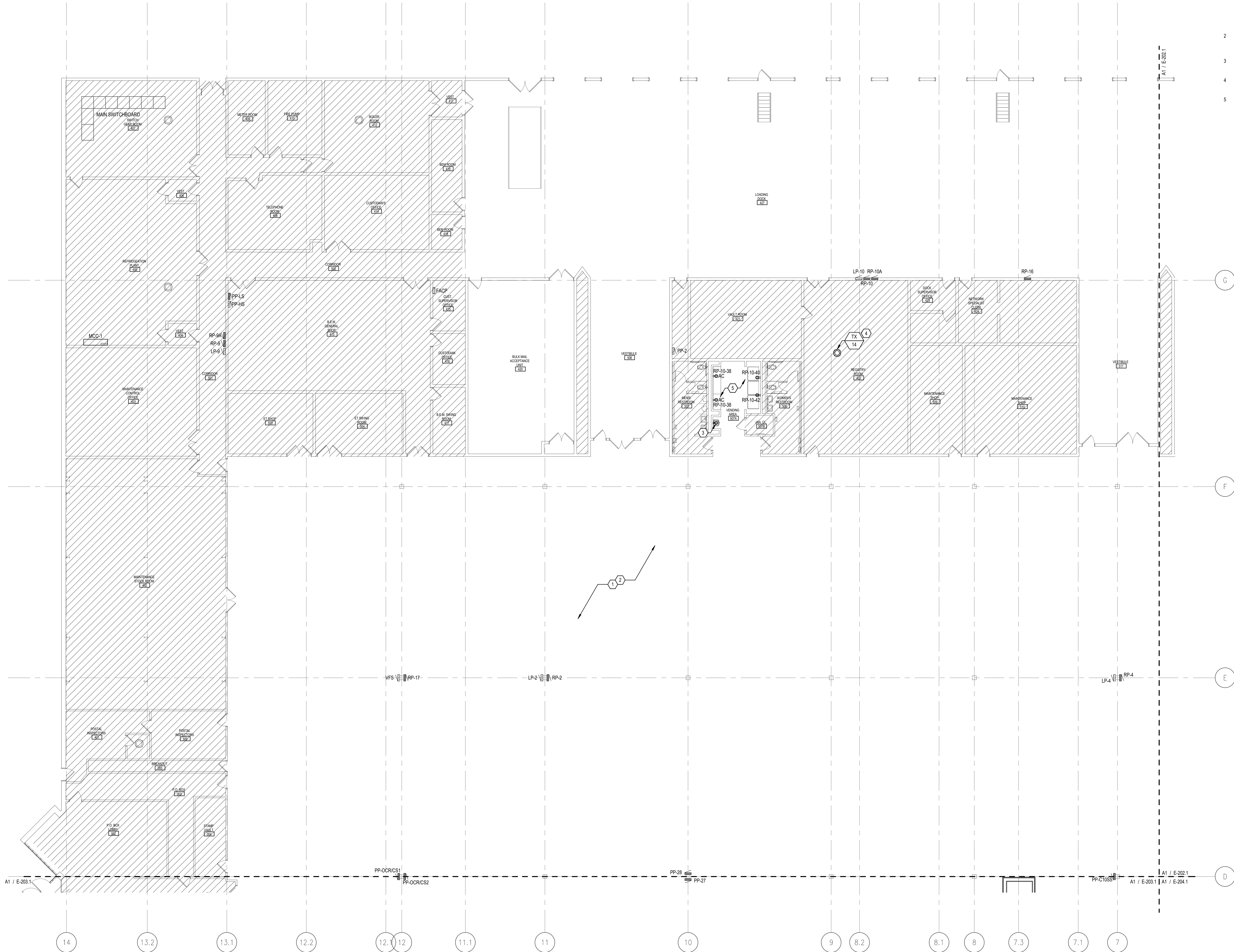
Date: 02/23/2023

## GENERAL NOTES

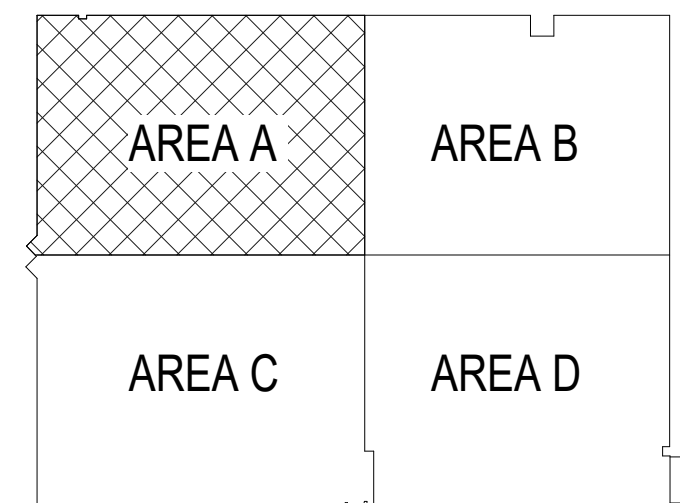
- REFER TO SHEET E-001.1 FOR ELECTRICAL SYMBOL LEGEND AND PANELBOARD SCHEDULES.
- REFER TO E-001.1 FOR ELECTRICAL DETAILS.
- COORDINATE CIRCUIT, DISCONNECT, AND STARTER SIZE(S) AND TERMINATION LOCATION(S) PRIOR TO ROUGH-IN.
- HATCHING INDICATES AREAS WITH NO WORK.
- NOT ALL EXISTING DEVICES ARE SHOWN ON PLAN.
- REFER TO MECHANICAL SHEETS FOR ADDITIONAL DEMOLITION SCOPE.

## KEY NOTES

- PROVIDE 35 ELECTRICAL DROP CORDS TOTAL ON THE WORKROOM FLOOR ENCOMPASSING AREAS 'A', 'B', 'C', AND 'D'. DROP CORDS FROM CEILING WITH DOUBLE DUPLEX RECEPTACLE AT 8'-0" AFF FOR EQUIPMENT POWER. WIRE EACH CIRCUIT WITH (2#12, 1#125 IN 3/4" TO A 20A/1P SPARE BREAKER IN THE NEAREST 208/120V PANELBOARD WITH AVAILABLE CAPACITY. CONTRACTOR SHALL METER EXISTING PANELBOARDS WITH NEW LOADS TO ENSURE THAT NO OVERLOAD IS POSSIBLE. PROVIDE A NEW BREAKER IF NO SPARES ARE AVAILABLE. EACH CIRCUIT SHALL BE LOADED WITH NO MORE THAN 1.2kW. EXACT DROP CORD LOCATIONS WILL BE PROVIDED AT A LATER DATE. SEE CEILING DROP OUTLET DETAIL FOR MORE INFORMATION.
- PROVIDE 15 DATA DROPS TOTAL ON THE WORKROOM FLOOR ENCOMPASSING AREAS 'A', 'B', 'C', AND 'D'. DATA OUTLET CONDUIT ROUTED FROM CEILING. DATA BOX TO BE SUPPORTED FROM CEILING TO FLOOR WITH RIGID CONDUIT SO THAT BOTTOM OF OUTLET IS AT 8'-0" AFF. EXACT LOCATIONS WILL BE PROVIDED AT A LATER DATE.
- EXISTING WATER COOLER TO BE REMOVED AND REPLACED WITH NEW. REPLACE EXISTING GFCI RECEPTACLE WITH A REGULAR DUPLEX RECEPTACLE, AND PROVIDE A 5mA GFCI BREAKER FOR THE CIRCUIT SERVING THE WATER COOLER.
- EXISTING EXHAUST FAN TO BE REMOVED AND REPLACED WITH NEW (FRACTIONAL HP, 120V, 16). DISCONNECT FROM AND RECONNECT TO EXISTING CIRCUIT. EXTEND EXISTING CONDUIT AND WIRING AS REQUIRED.
- REMOVE EXISTING RECEPTACLES WITHIN VENDING AREA AND PROVIDE NEW AS SHOWN. WIRE WITH (2#12, 1#125 IN 3/4" TO SPARE 20A/1P BREAKERS IN THE NEAREST 208/120V PANELBOARD WITH AVAILABLE CAPACITY. CIRCUIT NUMBERS AS INDICATED. PROVIDE GFCI BREAKERS FOR VENDING MACHINE CIRCUITS IF VENDING MACHINES ARE NOT INTEGRALLY GFCI-PROTECTED.



A1 POWER PLAN - AREA 'A'  
1" = 10'-0"



KEYPLAN