

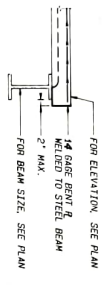
OPENING BETWEEN FLUTES

OPENING THROUGH ONE FLUTE

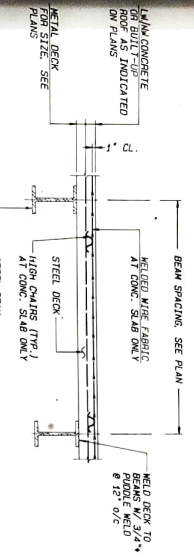
OPENING THROUGH TWO OR MORE FLUTES

SECTION AA

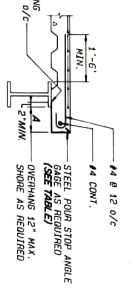
TYPICAL DETAILS FOR OPENINGS IN DECK



TYPICAL SLAB OPENING DETAIL WITH NO OVERHANG



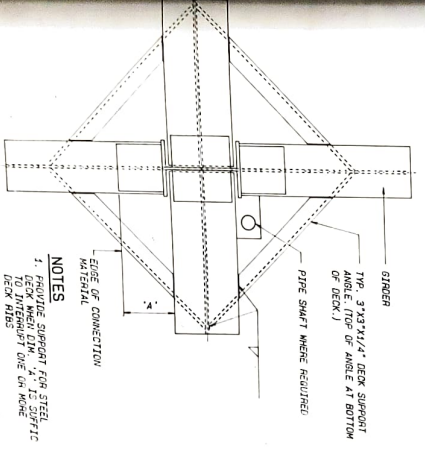
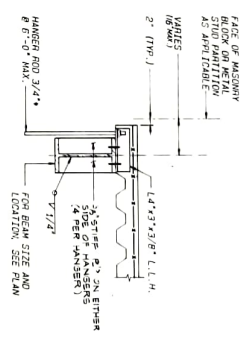
TYPICAL SLAB CONSTRUCTION



TYPICAL SLAB OPENING DETAIL WITH OVERHANG

SLAB THICKNESS - 6 1/2"	SLAB THICKNESS - 8"
4	12
6	12
8	10
10	10
12	10

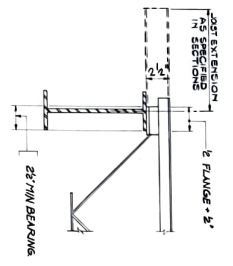
TYPICAL STAIR HANGER DETAIL



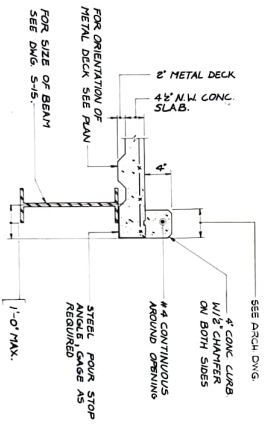
TYPICAL DECK SUPPORT AT COLUMNS AND HANGERS

- NOTES
1. PROVIDE SUPPORT FOR STEEL DECK WHEN ON 2" MIN. WIDE DECK HANGERS.
 2. PROVIDE SHEET METAL SLAB DECK 6" O.C. ON HANGERS.

TYPICAL JOIST SUPPORT DETAIL



TYPICAL DETAIL AT MECHANICAL MEZZANINE OPENINGS



UNITED STATES POSTAL SERVICE

General Mail Facility
Mid-Hudson
Newburgh, New York

UNITED STATES POSTAL SERVICE
Facilities Service Center
Windsor, CT.
USPS Form 1500-04

James Stewart Polshek and Partners
Architect
300 Hudson 12th St.
New York, N.Y. 10014

LEO CALDWELL & ASSOCIATES
Structural Engineer
SPRUE & HENNESSY
Mechanical Engineer
Joseph A. Sadak
Mechanical Engineering
General Rotating Associates
Laboratory Engineer

NO.	REVISION	DATE	BY	CHKD	DATE
1	AS SHOWN	3/7/78			
2	NO. DESCRIPTION	CHECK DATE			
3	DATE	4-01-89	DRAWN	HR	
4	ARCHITECT	CHECK	HN		
5	GRAPHIC SCALE				

DRAWING TITLE
STRUCT. STEEL
TYP DETAILS II

Drawing No. 5-604