

NOTE: ALL FASTENERS SHALL BE NON-CORROSIVE METAL

NEW KEMPER ROOF MEMBRANE

NEW CANT STRIP

NEW COPPER CORNICE CAPPING WITH DRIP EDGE. TIE INTO NEW COPPER REGLET CAP FLASHING. REFER TO SPECIFICATION SECTION 07620.

EXISTING WOOD CORNICE, N.I.C.

EXISTING TONGUE-AND-GROOVE DECKING TO REMAIN. REPLACE PER ALLOWANCE

NEW VAPOR BARRIER.
NEW 1/2" COVER BOARD WITH PRIMED WITH KEMPERTEC PRIMER

EXISTING WOOD JOIST TO REMAIN.

EXISTING STONE COPING. REMOVE AND RESET WITH NON-CORROSIVE ANCHORAGE COMPONENTS. PROVIDE & INSTALL NEW STONES AS PER ALLOWANCE.

NEW 1/2" DIA., THREADED, NON-CORROSIVE METAL DOWEL SET IN MORTAR AT ALL CROSS JOINTS. DOWELS SHALL HAVE MIN. EMBEDMENT OF 3" IN EACH COPING.

RESIN-BASED FLASHING AT DOWEL PENETRATION. FLASH ENTIRE PERIMETER TO CREATE A WATERPROOF CONDITION.

NEW METAL SAWTOOTH FLASHING SET IN FULL MORTAR BED. PROVIDE MIN. 6" OVERLAP OR PER MAN. REQUIREMENTS.

NEW TWO PIECE STEPPED METAL COUNTER FLASHING. PROVIDE MIN. 1" FINISH LOCK & SOLDER JOINT. LOCK AND SOLDER ALL JOINTS TO WATERTIGHT CONDITION EXCEPT 3" LOOSE LOCK EXPANSION /CONTRACTION JOINTS 8'-0" FROM ANY CORNER AND 25'-0" O.C. ON STRAIGHT RUNS. SET EXPANSION/CONTRACTION JOINTS IN NON-SKINNING SEALANT. (TYP.)

SEAL FLANGE TO SCUPPER AT TOP AND SIDES OF SCUPPER (TYP.)

NEW RESIN BASED FLASHING. LINE ENTIRE SCUPPER INTERIOR AND TIE INTO ROOF ASSEMBLY PER MAN. RECOMMENDATIONS (TYP.)

NEW KEMPER ROOF MEMBRANE

NEW 1/2" COVER BOARD WITH PRIMED WITH KEMPERTEC PRIMER

NOTE:
G.C. SHALL LOCATE SCUPPERS TO ACHIEVE A POSITIVE PITCH FROM PORTICO ROOF TO MAIN ROOF VIA SCUPPERS.

EXISTING TONGUE-AND-GROOVE DECKING TO REMAIN. REPLACE PER ALLOWANCE

EXISTING WOOD JOIST TO REMAIN.

NOTE:
NEW SEISMIC TIES MIN. 1 PER 2 SQ.FT. OF FACE BRICK AT ALL FACE BRICK REBUILDING AREAS. (TYP)

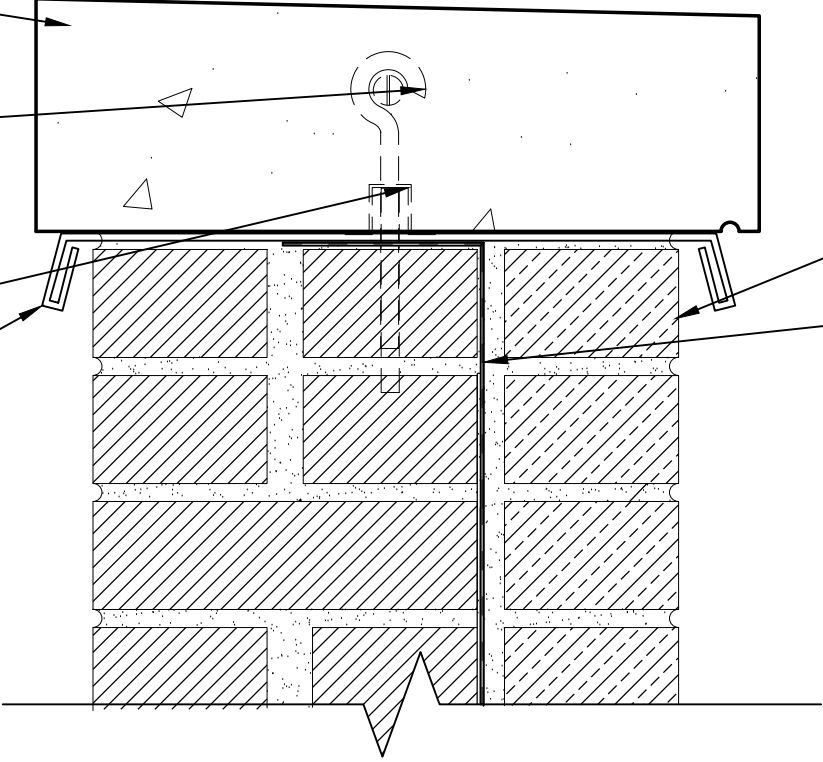
NOTE: SEPARATE ALL DISIMILAR METALS

NOTE: ALL FASTENERS SHALL BE NON-CORROSIVE METAL

NOTE: VERIFY SCUPPER OPENING SIZE WITH ARCHITECT PRIOR TO FABRICATION & INSTALLATION. MINIMUM OPENING SHALL BE 4" HIGH BY 8" WIDE. REMOVE MASONRY AS REQUIRED TO OBTAIN CONFIGURATION SHOWN.

NOTE: REPLACE DETERIORATED WOOD DECK TO MATCH EXISITNG PER ALLOWANCE. NOTIFY ARCHITECT OF ANY DETERIORATION.

EXISTING WOOD PORTICO CEILING STRUCTURE TO REMAIN.



NEW MASONRY TO MATCH EXISTING. DUPLICATE BOND PATTERN. (TYP)

NEW FABRIC COATED METAL FLASHING SET IN MASTIC. INSTALL ADDITIONAL PLY OF FABRIC COATED METAL SET IN MASTIC AT ALL PENETRATIONS.

NEW WALL TIE WITH CONTINUOUS PENCIL ROD. INSTALL AT MIN. RATE OF 1 PER 2 SQ. FEET.

FASTEN SCUPPER TO MASONRY WALL WITH NEW NON-CORROSIVE METAL FASTENERS. SEPARATE DISSIMILAR METALS. (TYP.)

INSTALL NEW STRIP IN PLIES UNDER OVER SCUPPER FLANGE AT PERIMETER OF SCUPPER (TYP.)

NEW COPPER SCUPPER, TYP. OF 2.

FLASHING BEYOND

NEW CANT STRIP BELOW ROOF SCUPPERS, TYP. OF 2 LOCATIONS.
NEW KEMPER ROOF MEMBRANE.

NEW 1/2" COVER BOARD WITH PRIMED WITH KEMPERTEC PRIMER.
NEW R30 INSULATION.
NEW VAPOR BARRIER.

EXISTING CONCRETE DECK AND CINDER FILL (V.I.F.)

EXISTING PLASTER & LATH CEILING TO REMAIN.
EXISTING STEEL BEAMS TO REMAIN.