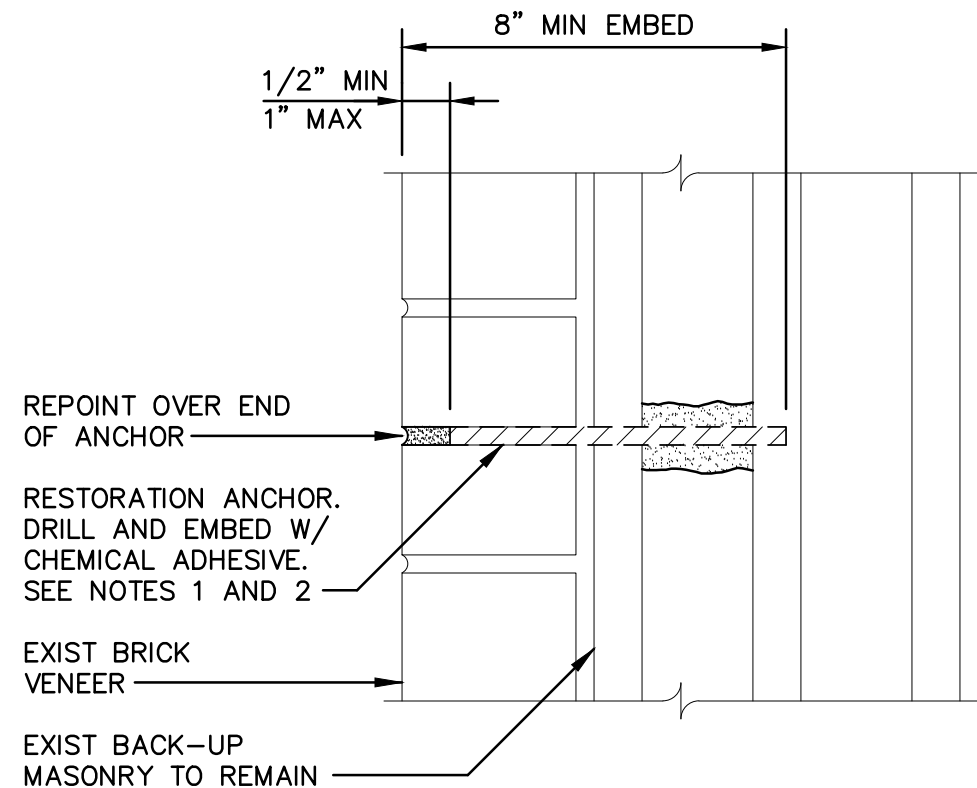


- NOTES:
1. PROVIDE RESTORATION ANCHORS AT 16" O.C.
 2. PROVIDE RESTORATION ANCHORS PRIOR TO MASONRY REMOVALS.

1 DETAIL AT MASONRY RESTORATION ANCHOR

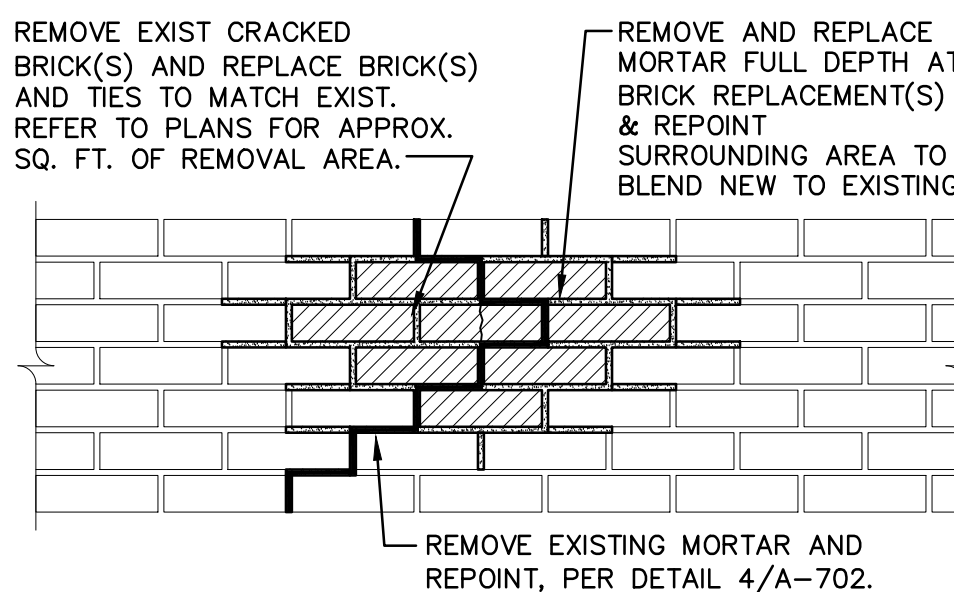
N.T.S.



- NOTES:
1. PROVIDE CHEMICAL ADHESIVE WITH SCREEN TUBE AT HOLLOW MASONRY.
 2. DRILL WITH ROTARY DRILL ONLY AT HOLLOW MASONRY.

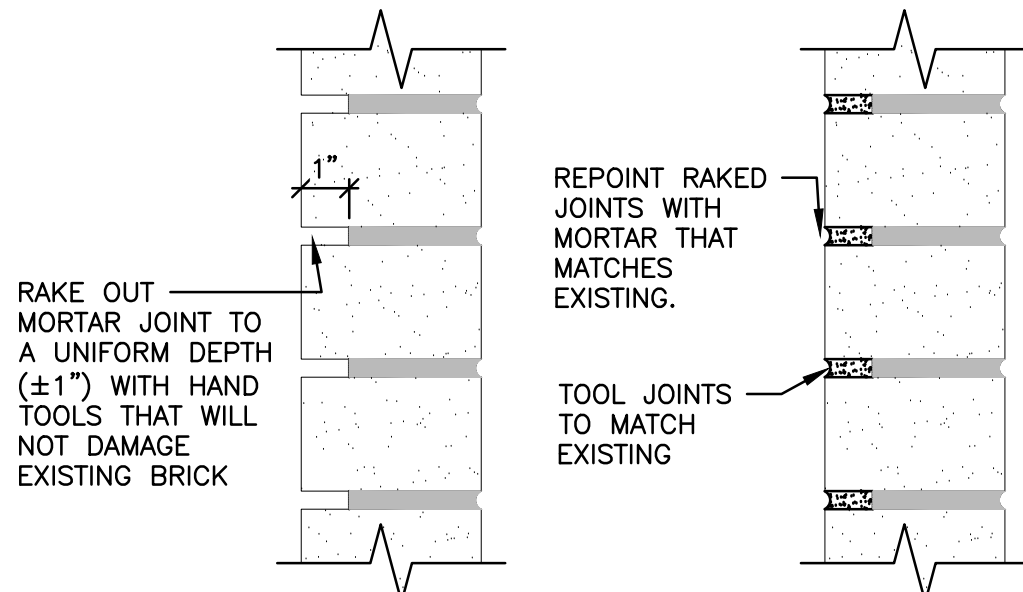
2 SECTION AT MASONRY RESTORATION ANCHOR

N.T.S.



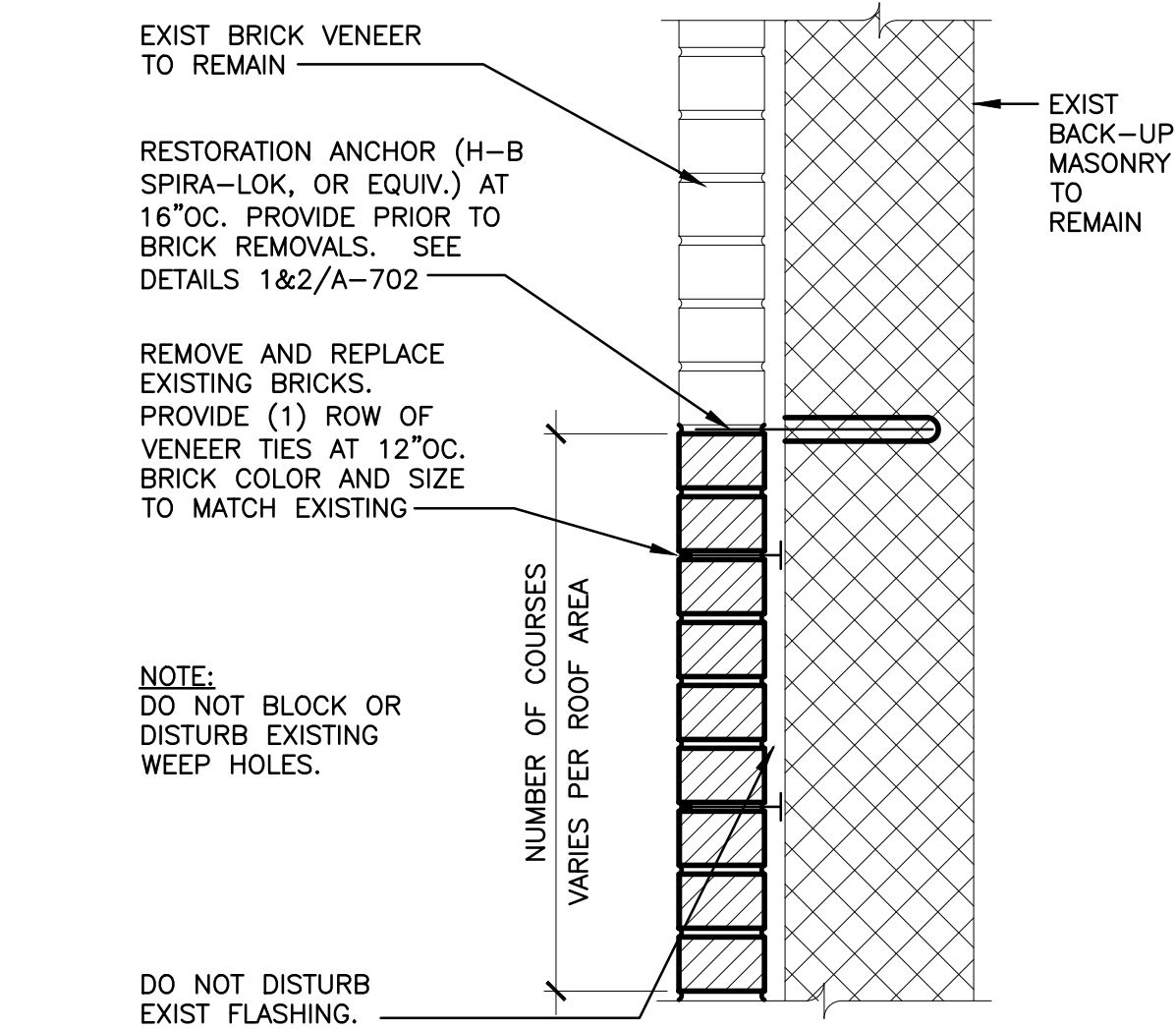
3 CRACKED OR SPALLED MASONRY REPAIR DETAIL

N.T.S.



4 BRICK JOINT REPOINTING DETAIL

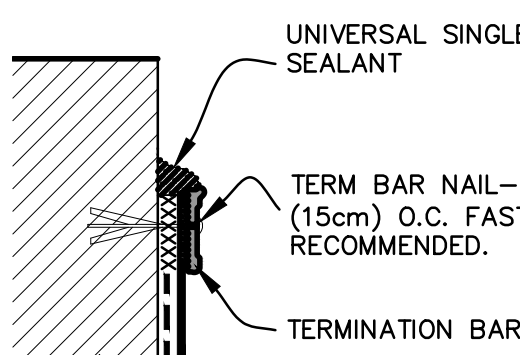
N.T.S.



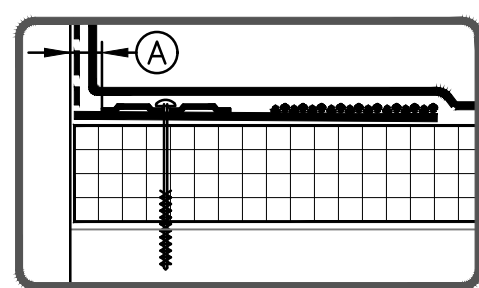
- NOTES:
1. EXISTING CONDITIONS DEPICTED ARE BASED ON LIMITED INFORMATION. CONTRACTOR SHALL NOTIFY DIRECTORS REPRESENTATIVE AFTER REMOVAL OPERATIONS ARE COMPLETE SO THAT CONDITIONS CAN BE VERIFIED.

5 TYPICAL SECTION AT MASONRY REPAIR

N.T.S.

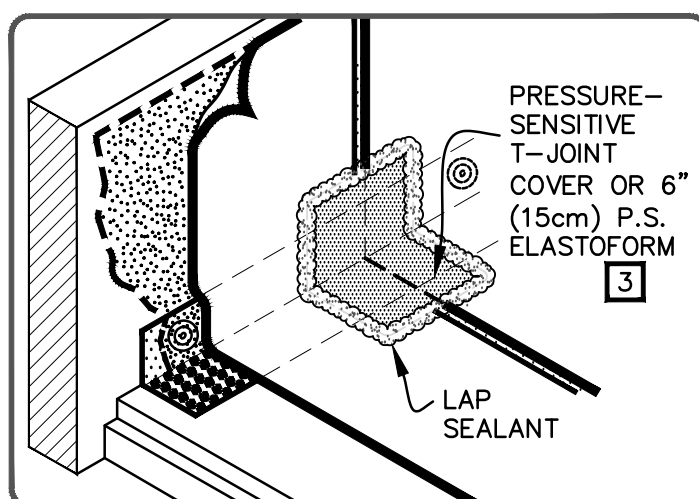


DIMENSION	cm
(A) 1/8"-1"	0.5-2.5



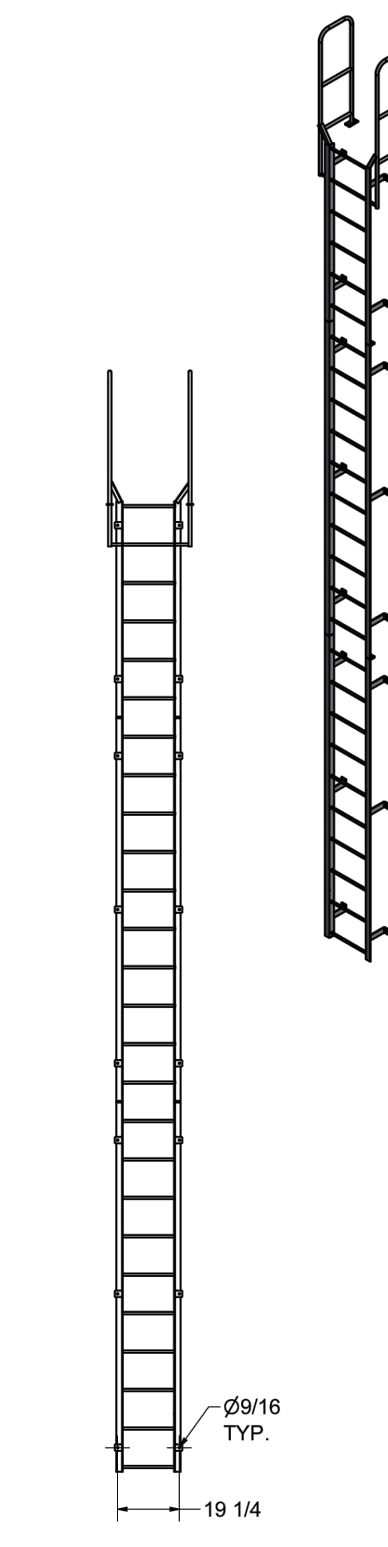
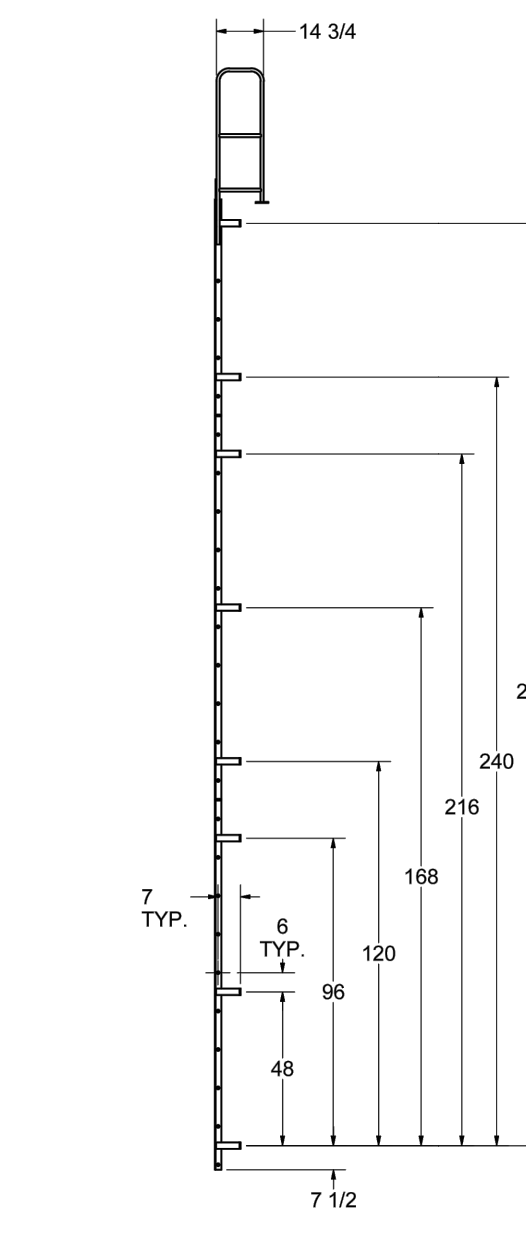
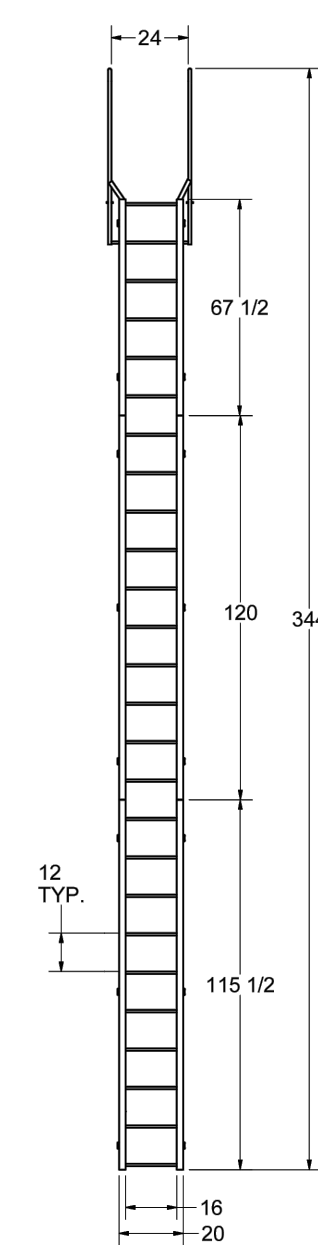
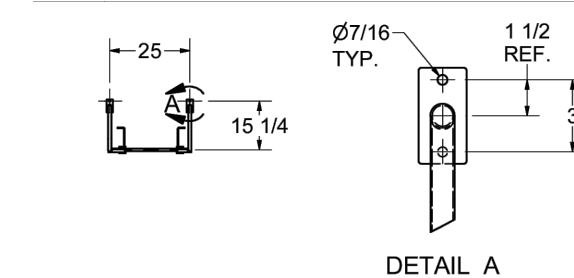
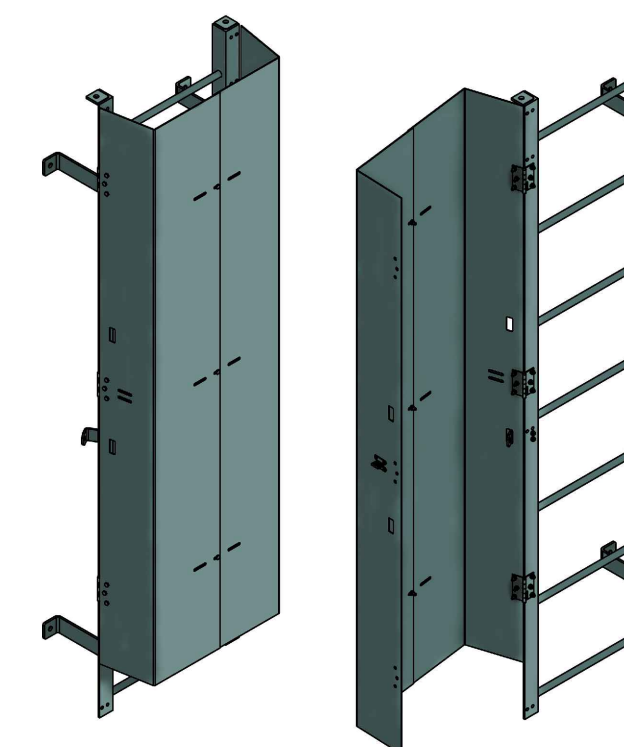
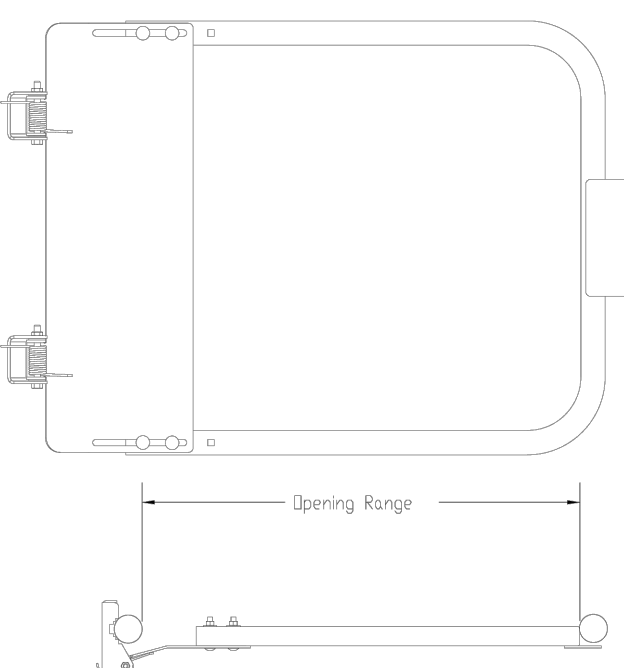
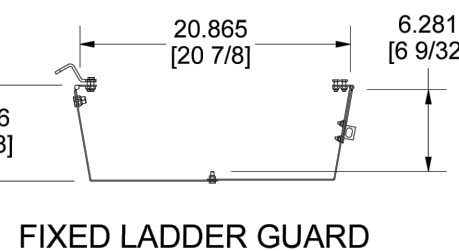
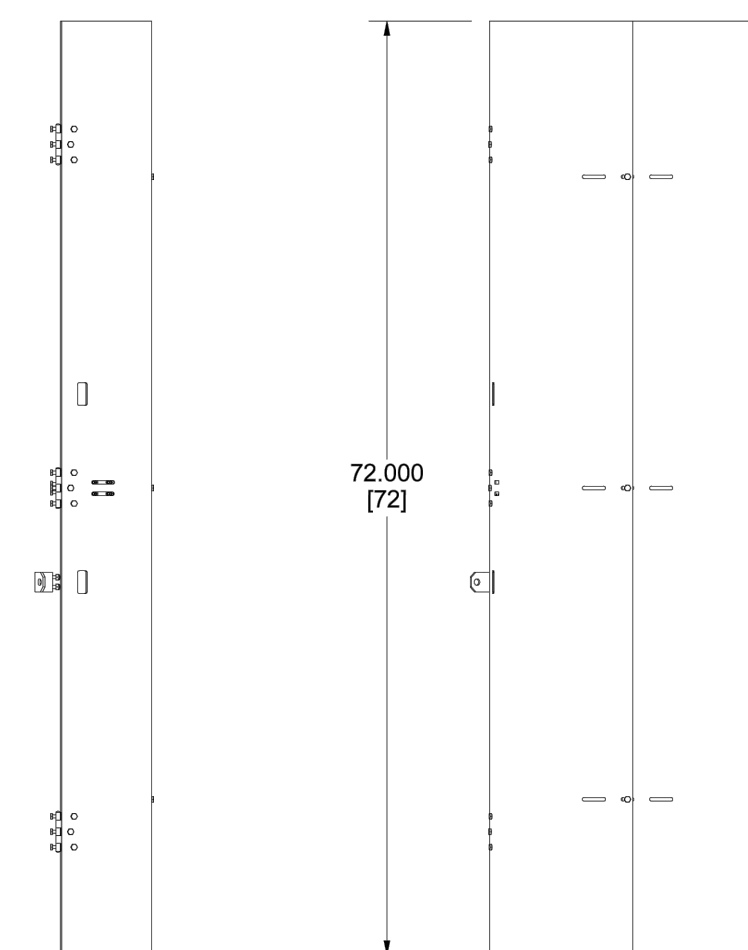
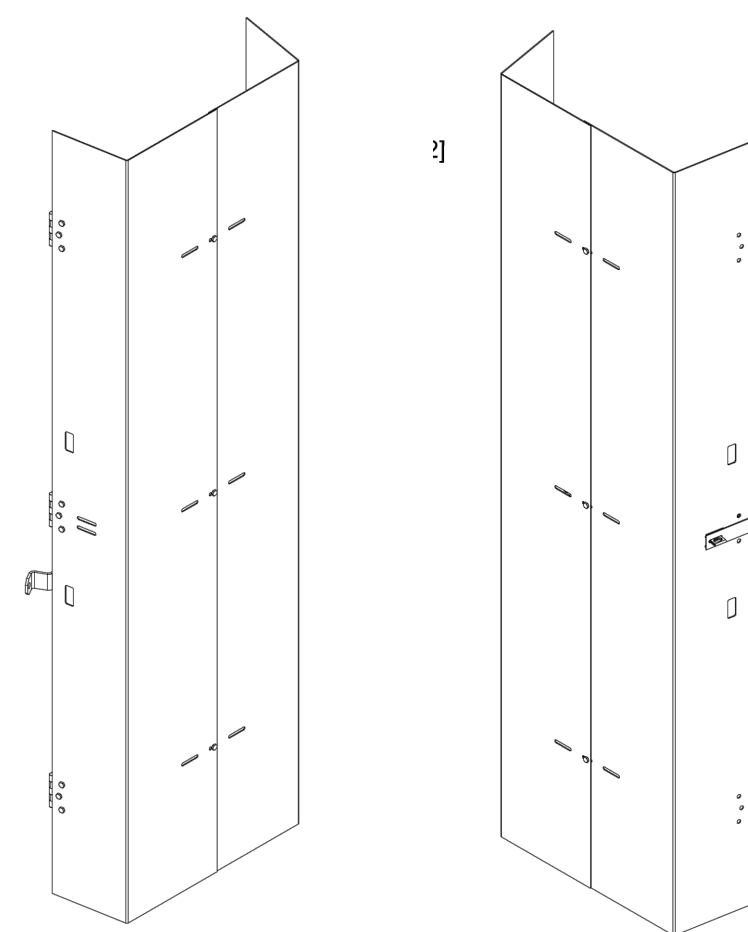
OPTIONAL: PROVIDE SEAM PLATE/FASTENER INTO THE STRUCTURAL DECK UP TO 6" (15cm) FROM ANGLE CHANGE.

- NOTES:
1. FASTENERS AND PLATES ARE REQUIRED AT 6" (15cm) O.C. FOR ADHERED SYSTEMS WITH WARRANTY WIND SPEED COVERAGE GREATER THAN 90 MPH AND FOR ALL PROJECTS WITH WARRANTIES GREATER THAN 20 YEARS. HP FASTENERS AND POLYMER SEAM PLATES ARE REQUIRED OVER STEEL DECKS ON MECHANICALLY FASTENED SYSTEMS.
 2. PROJECTS WITH 30-YEAR WARRANTIES REFER TO MANUFACTURER'S DETAILS FOR ADDITIONAL INFORMATION.
 3. FOR CORNERS AND RUSS APPLICATION REFER TO MANUFACTURER'S DETAILS FOR ADDITIONAL INFORMATION.



6 TYP. WALL INTERSECTION DETAIL

SCALE: N.T.S.



6 EXTERIOR LADDER ASSEMBLY

N.T.S.

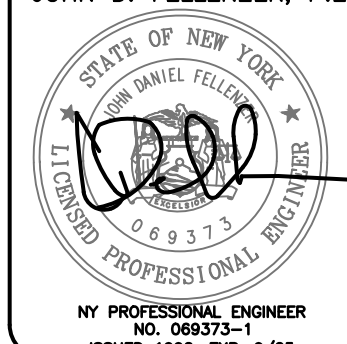
- NOTES:
1. OSHA COMPLIANT BLACK PAINTED STEEL LADDER, INSTALLED PER MANUFACTURER REQUIREMENTS.
 2. BASIS OF DESIGN COTTERMAN, CO., OR APPROVED EQUIV.
 3. BOTTOM RUNG OF LADDER MAX. 14" ABOVE GRADE.
 4. STANDOFF BRACKETS LOCATIONS ARE 1"±.
 5. DO NOT PRE-DRILL HOLES IN MASONRY. DRILL HOLES TO MATCH ALIGNMENT IN FIELD.
 6. PROVIDE 1/2" SS ANCHORS AND SET EPOXY THROUGH FACE BRICK INTO BUILDING.
 7. PROVIDE SECURITY DOOR (LADDER GUARD) AT BOTTOM OF LADDER, CODED LOCKING PADLOCK, PLATFORM AT TOP OF LADDER AND KEY SAFETY, OR APPROV. EQUIV., SELF-CLOSING SAFETY GATE.
 8. DO NOT REST PLATFORM ON PARAPET.
 9. PROVIDE FALL PROTECTION PER OSHA 1910.28. INCLUDING BUT NOT LIMITED TO CABLE SHUTTLE, CABLE AND CABLE GUIDES.

CONSULTANT

FELLENZER
FE #: 23-377 ENGINEERING LLP

WARNING:
THE ALTERATION OF THIS MATERIAL IN ANY WAY, UNLESS DONE UNDER THE DIRECTION OF A COMPARABLE PROFESSIONAL, I.E. ARCHITECT FOR AN ARCHITECT, ENGINEER FOR AN ENGINEER, OR LANDSCAPE ARCHITECT FOR A LANDSCAPE ARCHITECT, IS A VIOLATION OF THE NEW YORK STATE EDUCATION LAW AND/OR REGULATIONS AND IS A CLASS "A" MISDEMEANOR.

JOHN D. FELLENZER, P.E.



CONSTRUCTION

TITLE: REPLACE ROOF
DOT REGION 8, ORANGE COUNTY

LOCATION: NYS NEWBURGH DOT FACILITY
112 DICKSON STREET
NEWBURGH, NY 12550

CLIENT: NEW YORK STATE
DEPARTMENT OF TRANSPORTATION

MARK	DATE	DESCRIPTION
PROJECT NUMBER:	10/3/2024	BID DOCUMENTS
DESIGNED BY:		SBL
DRAWN BY:		SL
FIELD CHECK:		SRB
APPROVED:		JDF
SHEET TITLE:		

DETAILS

DRAWING NUMBER:

A-702