

01 GENERAL CONDITIONS

GENERAL AND SPECIAL CONDITIONS ARE HEREBY MADE AN INTEGRAL PART OF THIS DIVISION OF THE SPECIFICATIONS IN THAT THEY ARE APPLICABLE TO THE WORK UNDER THIS DIVISION UNLESS OTHERWISE NOTED.

PROVIDE ALL LABOR, MATERIAL, AND EQUIPMENT REQUIRED FOR THE COMPLETION AND OPERATION OF ALL SYSTEMS IN THIS SECTION OF WORK IN ACCORDANCE WITH ALL APPLICABLE CODES AND THIS CONTRACT.

PERMITS: APPLY FOR AND PAY FOR ALL NECESSARY PERMITS, FEES, AND INSPECTIONS REQUIRED BY ANY PUBLIC AUTHORITY HAVING JURISDICTION. AERAGE CHARGES, BOND PROGRAM ASSESSMENTS AND FACILITIES CHARGE ARE NOT TO BE CONSIDERED TO BE A PART OF THIS CONTRACT.

WARRANTY: PROVIDE ALL MATERIALS AND EQUIPMENT UNDER THIS SECTION OF THE SPECIFICATIONS WITH A ONE YEAR WARRANTY FROM THE DATE OF ACCEPTANCE OF WORK BY THE OWNER.

THE CONTRACTOR SHALL BE INTO CIVIL PROVIDED TAP AS INDICATED ON PLANS. ALL COSTS FOR THIS SERVICE SHALL BE PART OF HIS BID CONTRACT PRICE.

PROTECT COPPER PIPING AGAINST CORROSION WITH DISSIMILAR METALS. ALL HANGERS, SUPPORTS, ANCHORS, AND CLIPS SHALL BE COPPER OR COPPER PLATED.

PROTECT COPPER PIPING AGAINST CORROSION WITH ALL MASONRY. WHERE COPPER IS SLEEVED THROUGH MASONRY, PROVIDE COPPER OR RED BRASS. SLEEVE.

MAKE SURE PROVISIONS ARE INSTALLED IN ALL PIPING SO NO STRAIN OR BREAKAGE RESULTS FROM EXPANSION OR CONTRACTION.

INSTALL WATER PIPING IN EXTERIOR WALLS ON THE CONDITIONED SIDE OF THE WALL INSULATION.

PITCH ALL WATER PIPES SO THAT ALL PARTS MAY BE DRAINED. THE FORMATION OF SAGS AND TRAPS SHALL BE AVOIDED.

PROVIDE SHOCK ARRESTORS WHERE SHOWN ON PLANS FOR THE COMPLETE ELIMINATION OF WATER HAMMER.

STERILIZE DOMESTIC WATER PIPING IN ACCORDANCE WITH THE AMERICAN WATER WORKS ASSOCIATION'S SPECIFICATIONS AND LOCAL HEALTH DEPARTMENT REGULATIONS.

SANITARY PIPING 2.5" OR LESS SHALL BE SLOPED AT 1/4" PER FOOT. SANITARY PIPING 3" OR LARGER SHALL BE SLOPED AT 1/8" PER FOOT, UNLESS OTHERWISE REQUIRED BY CODE OR NOTED.

WHERE WASTE PIPING IS EXPOSED IN REST ROOM AREAS, PROVIDE CHROME PLATED BRASS PIPING, WITH MATCHING STOPS AND ESCUTCHEONS.

REMOVE REMOVALS TRAPS WITH INTEGRAL CLEAN-OUT PLUGS FOR ALL LAVATORIES. INSTALL CLEAN-OUTS IN A LOCATION THAT PERMITS ACCESS FOR SERVICE WITHOUT DAMAGING TO THE FINISHED MATERIAL.

INSTALL CLEAN-OUTS IN A LOCATION THAT PERMITS ACCESS FOR SERVICE WITHOUT DAMAGING TO THE BUILDING OR FINISHED MATERIALS.

02 MATERIALS AND EQUIPMENT

ALL NEW WORK SHALL BE OF MATERIALS LISTED BELOW OR EQUAL MATCH EXISTING. IF A CONFLICT EXISTS BETWEEN MATERIALS AND/OR EQUIPMENT, THE MORE STRINGENT SHALL APPLY AS ADJUDGED BY THE ARCHITECT/ENGINEER. THE CONTRACTOR SHALL FIELD VERIFY MATERIAL TYPE AND EQUIPMENT.

A. SANITARY SEWER PIPE AND FITTINGS - BELOW GRADE:
SCHEDULE 40 DWV DWP PIPE, (ASTM D1784 - D1785), PVC SOCKET FITTINGS AND SOLVENT CEMENTED FITTINGS. (ASTM D2665)

B. SANITARY SEWER/VENT PIPE AND FITTINGS - ABOVE GRADE:
SCHEDULE 40 PVC DWV PIPE, (ASTM D1784 - D1785), PVC SOCKET FITTINGS AND SOLVENT CEMENTED FITTINGS. (ASTM D2665)

C. DOMESTIC WATER PIPING BELOW GRADE:
SOFT ANNEALED SEAMLESS COPPER TUBING, TYPE 'K' (ASTM B 88) WITH NO JOINTS BELOW GRADE.

D. DOMESTIC WATER PIPING AND JOINTS ABOVE GRADE:
HARD DRAWN SEAMLESS COPPER TUBING, TYPE 'L' (ASTM B 88) WITH 95-5 SILVER SOLDERED JOINTS (ASME B16.18/22) OR PRESSURE SEALED JOINTS WITH EPDM-BURDED O-RING SEAL (PROGRESS OR EQUAL) OR 3" AND BELOW.

CROSSLINKED POLYETHYLENE (PEX) BY WIRSBO AQUAPLEX (ASTM F876 AND ASTM F877) WITH PEX-X COLD EXPANSION FITTINGS, PROPER INSERT WITH CORRESPONDING PRESSURE RING. (ASTM F1960)

MINIMUM BEND RADIUS (COLD BENDING): NO LESS THAN SIX TIMES THE OUTSIDE DIAMETER. USE A BEND RADIUS OF 18" FOR 1/2" TO 1" TUBING. MANUFACTURER FOR TUBING WITH A BEND RADIUS SMALLER THAN STATED.

MANIFOLDS: UPONOR PROX1 OR UPONOR ENGINEERED PLASTIC (EP) MANIFOLDS. MANIFOLDS MANUFACTURED WITH THE APPROPRIATE SIZED PROPERT FITTINGS.

PROVIDE RED PEX PIPE FOR HOT WATER, BLUE PEX PIPE FOR COLD WATER SYSTEMS.

E. OXYGEN PIPING AND JOINTS ABOVE GRADE:
COPPER MEDIAL GAS TUBING, TYPE 'L', STANDARD COLD PRESSURE "OOKY" (ASTM B 818) WITH WROUGHT-COPPER JOINTS (ASTM D216/22), PRESSURE TYP OR MSS-SP 73 WITH DIMENSIONS FOR BRACED JOINTS, COPPER UNIONS, WROUGHT-COPPER OR CAST-COPPER ALLOY (ASTM B122).

F. ANESTHESIA EVACUATION PIPE AND FITTINGS - ABOVE GRADE:
SCHEDULE 40 PVC DWV PIPE, (ASTM D1784 - D1785), PVC SOCKET FITTINGS AND SOLVENT CEMENTED FITTINGS. (ASTM D2665)

03 INSULATION

INSULATE DOMESTIC WATER PIPING ABOVE GRADE (EXCEPT EXPOSED CONNECTIONS) TO PLUMBING TUBING WITH R-10 OF THE PLUMBING INSULATION (JOINS-MANVILLE OR SIMILAR). FOLLOW THIS SCHEDULE:

SERVICE	PIPE SIZE	THICKNESS
DOMESTIC HOT WATER (105 - 140 F)	ALL	1"
DOMESTIC HOT WATER RETURN	ALL	1"
DOMESTIC COLD WATER	ALL	1/2"

PIPING INSULATION, JACKETS, COVERINGS, SEALERS, MASTICS AND ADHESIVES ARE REQUIRED TO MEET A FLAME-SPREAD RATING OF 25 OR LESS AND A SMOKE-DEVELOP RATING OF 50 OR LESS AS TESTED BY ASTM E84/NFPA 255 METHOD.

INSTALL HORIZONTAL STRAIGHT FIRM PIPING ABOVE GRADE AND ROOF DRAIN BOODIES WITH 1 1/2" PREFORMED FIBERGLASS INSULATION (JOINS-MANVILLE OR SIMILAR).

04 VALVES

SHUT OFF VALVES: BRASS/BRONZE, BALL TYPE, FULL PORT, TWO-PIECE, 125 PS WORKING PRESSURE. NSF 61 APPROVED.

CHECK VALVES: BRASS/BRONZE, SWING TYPE, 125 PS WORKING PRESSURE, NSF 61 APPROVED.

INSTALL IN A LOCATION THAT PERMITS ACCESS FOR SERVICE WITHOUT DAMAGE TO THE BUILDING OR FINISHED MATERIALS. PROVIDE ACCESS DOORS IF REQUIRED.

05 TESTS

ALL SOIL, SLEAVE, VENT AND WATER PIPING SHALL BE TESTED BY THE CONTRACTOR. THE CONTRACTOR SHALL BE RESPONSIBLE FOR THE TESTING AND SHALL BE APPROVED BY THE ENGINEER BEFORE ACCEPTANCE. ALL PIPING LOCATED UNDERGROUND OR CONCEALED IN BUILDING CONSTRUCTION SHALL BE TESTED BEFORE COVERING. THE CONTRACTOR SHALL BE RESPONSIBLE FOR THE TESTS REQUIRED FOR EQUIPMENT SHALL BE FURNISHED BY THE CONTRACTOR WITHOUT ADDITIONAL CHARGE TO THE OWNER.

06 SEISMIC REQUIREMENTS

PROPERLY SUPPORT AND BRACE VERTICALLY AND HORIZONTALLY ALL PIPING. SEISMIC REQUIREMENTS SHALL BE IN ACCORDANCE WITH APPLICABLE CODES TO PREVENT EXCESSIVE MOVEMENT DURING SEISMIC CONDITIONS.

07 GUARANTEE

THE CONTRACTOR SHALL GUARANTEE THE COMPLETE PLUMBING SYSTEM AGAINST DEFECTS DUE TO FAULTY MATERIALS, WORKSMANSHIP OR FAILURE DUE TO NEGLIGENCE OF THE CONTRACTOR. THIS GUARANTEE SHALL EXTEND 12 MONTHS FROM DATE OF FINAL ACCEPTANCE. ALL SERVICE CALLS DURING THIS PERIOD SHALL BE PROVIDED BY THE CONTRACTOR.

NEW WORK

	DOMESTIC COLD WATER
	DOMESTIC EXISTING COLD WATER
	DOMESTIC 120° WATER
	DOMESTIC EXISTING 120° WATER
	DOMESTIC 120° WATER RETURN
	DOMESTIC EXISTING 120° WATER RETURN
	DOMESTIC 140° WATER
	DOMESTIC 140° WATER RETURN
	TEMPERED WATER
	FILTERED WATER
	SANITARY
	EXISTING SANITARY
	SANITARY VENT
	EXISTING SANITARY VENT
	STORM DRAIN (ABOVE SLAB)
	OVERFLOW STORM DRAIN (ABOVE SLAB)
	STORM DRAIN (BELOW SLAB OR GRADE)
	EXISTING STORM DRAIN (BELOW SLAB OR GRADE)
	CONDENSATE
	GREASE WASTE
	OIL WASTE
	DRAIN
	PUMPED DISCHARGE
	COMPRESSED AIR
	EXISTING COMPRESSED AIR
	NATURAL GAS
	PIPE TURNING DOWN
	PIPE TURNING UP
	PIPE CAP
	FIXTURE SUPPLY WITH SHUT-OFF
	SHUT-OFF VALVE
	CHECK VALVE
	EXPANSION VALVE
	BALANCING VALVE
	GAS COCK AND GAS REGULATOR
	PRESSURE REDUCING/REGULATING VALVE
	STRAINER
	UNION
	SAFETY OR RELIEF VALVE
	SOLENOID VALVE
	OS&Y VALVE
	FLOOR DRAIN
	HUB DRAIN
	FLOOR SINK
	TRENCH DRAIN
	ROOF DRAIN
	OVERFLOW ROOF DRAIN
	FLOOR CLEANOUT
	END-OF-LINE CLEANOUT
	WALL CLEANOUT
	PRESSURE GAGE
	THERMOMETER
	SHOCK ARRESTOR (SUFFIX INDICATES PDI SIZE)
	BACKFLOW PREVENTER (REDUCED PRESSURE)
	BACKFLOW PREVENTER (DOUBLE CHECK)
	METER (GAS OR WATER)
	PUMP
	FREEZE PROOF WALL HYDRANT
	FREEZE PROOF WALL HYDRANT BOX
	HOSE BIB
	TRAP PRIMER
	FLOW SWITCH - FS#1
	DIRECTION OF FLOW
	EXPANSION JOINT
	PIPE ANCHOR
	PIPE SLEEVE
	FLEXIBLE CONNECTION
	REVISION NOTES
	POINT OF CONNECTION NEW TO EXISTING
	DOMESTIC WATER RISER DESIGNATION
	WASTE RISER DESIGNATION
	SECTION OR DETAIL NO.
	SECTION OR DETAIL LOCATED ON THIS SHT.

ABBREVIATIONS

AAV	AIR ADMITTANCE VALVE
AC	ABOVE CEILING
ADB	AUXILIARY DRAIN BOX
AFB	ABOVE FINISH FLOOR
BF-1	BACKFLOW PREVENTER
BF	BELOW FINISH FLOOR
BG	BELOW GRADE
BTU/H	BRITISH THERMAL UNIT/HOUR
BS	BELOW SLAB
BS-1	BREAK ROOM SINK
BV	BALANCING VALVE
C	CENTER LINE
C-1	WATER COOLER/FOUNTAIN
CA	COMPRESSED AIR
CB-1	CATCH BASIN
CO	CLEANOUT
CV	CHECK VALVE
CW	COLD WATER
DC	DOWNSPOUT COVER
DN	DOWN
DS	DISH

1. ALL PLUMBING SHALL BE INSTALLED IN ACCORDANCE WITH THE 2020 NEW YORK PLUMBING CODE AND THE INTERNATIONAL FIRE CODES WHICH APPLY.
2. ALL PLUMBING PIPING SHALL BE CLOSELY COORDINATED WITH STRUCTURAL SYSTEM, MECHANICAL, SYSTEM AND ELECTRICAL SYSTEM TO INSURE PROPER COMPLIANCE WITH CODES AND INSURE THAT ALL PIPING, BUT NOT CONDUIT, IS PROTECTED FROM MECHANICAL DAMAGE.
3. IF ANY SUBSTITUTED EQUIPMENT IS SUBMITTED AND APPROVED WITH PLUMBING CONNECTIONS OTHER THAN THAT SHOWN ON THE DRAWINGS AND SCHEDULES, IT SHALL BE THE RESPONSIBILITY OF THE CONTRACTOR TO PROVIDE PROPER PLUMBING CONNECTIONS TO THIS EQUIPMENT AT NO ADDITIONAL COST TO THE OWNER.
4. DO NOT SCALE DRAWINGS. REFER TO ARCHITECTURAL DRAWINGS FOR EXACT LOCATIONS OF DOORS, WINDOWS, WALLS, FIXTURES, ETC.
5. ALL CLEANOUTS SHALL HAVE TOPS THAT ARE UNLESS OTHERWISE SPECIFIED, LOOK FINISHES SUCH AS CARPET, TILE, ETC. DESIGNED OTHERWISE SPECIFIED.
6. ALL FLOOR CLEANOUT, FLOOR DRAIN AND CATCH BASIN TOPS SHALL BE COVERED DURING CONSTRUCTION TO PREVENT DAMAGE.
7. VENTS WILL BE COLLECTED ABOVE THE CEILING AND EXTENDED THROUGH THE ROOF AT AS FEW POINTS AS POSSIBLE. VENT PENETRATIONS SHALL AVOID MECHANICAL EQUIPMENT INTAKE AIR LOCATIONS PER CODE REQUIREMENTS.
8. EXCEPT WHERE PIPE SCHEDULE IS PROVIDED OR UNLESS OTHERWISE NOTED, ALL SUPPLY, WASTE AND VENT RISERS SHALL BE RUN IN WALLS OR PARTITIONS.
9. PROVIDE ACCESS PANELS AS REQUIRED AT VALVE LOCATIONS TO PROVIDE ACCESS TO CONTROL VALVES. COORDINATE TYPE AND LOCATION WITH GENERAL CONTRACTOR.
10. PROVIDE FOR ACCESS TO ALL EQUIPMENT REQUIRING CLEANING OR ADJUSTMENT.
11. P.C. SHALL PROVIDE A PRESSURE REDUCING VALVE WHERE WATER MAIN ENTERS BUILDING IF PRESSURE EXCEEDS 80 PSI. SET PRV @ 75 PSI.

DRAWING NUMBER	DESCRIPTION
P001	PLUMBING SPECIFICATIONS, LEGEND, GENERAL NOTES
P002	PLUMBING SCHEDULES & DETAILS
P101	MAIN LEVEL FLOOR PLAN – WASTE – WEST
P102	MAIN LEVEL FLOOR PLAN – WASTE – EAST
P103	UPPER LEVEL FLOOR PLAN – WASTE – WEST
P104	UPPER LEVEL FLOOR PLAN – WASTE – EAST
P201	MAIN LEVEL FLOOR PLAN – WATER – WEST
P202	MAIN LEVEL FLOOR PLAN – WATER – EAST
P203	UPPER LEVEL FLOOR PLAN – WATER – WEST
P204	UPPER LEVEL FLOOR PLAN – WATER – EAST
P301	MAIN LEVEL FLOOR PLAN – MED GAS – WEST

PLAN DESIGNATION	PIPE LABEL
CW	DOMESTIC WATER
HW	DOMESTIC HOT WATER
HWR	DOMESTIC HOT WATER RETURN
SS	SANITARY SEWER
SV	SANITARY VENT
O	OXYGEN
AE	ANESTHESIA EVACUATION

NOTES:
 ALL PIPING WITH THE DESIGNATIONS ABOVE WILL BE LABELED PER AHS/ASME A13.1
 NON-POTABLE SYSTEMS WILL BE LABELED PER INTERNATIONAL PLUMBING CODE
 SECTION 608.8

**ROCKLAND GREEN CENTER FOR ANIMAL
RESCUE AND EDUCATIONAL
SERVICES, INC.**
R. G. C.A.R.E.S. ANIMAL SHELTER
427 BEACH RD. LOCATED IN THE TOWN OF
HARVERSTRAW, NY 10993

PLUMBING SPECIFICATIONS, LEGEND, GENERAL NOTES

REVIEWS	
INITIALS	
	BDA DSGN. REV.
	BDA TECH REV.

RGAS
PROJECT NO.: 23077
DRAWN: WRB
DATE: 07/08/2024

P001
1 OF 14

PLUMBING FIXTURE SCHEDULE						
TAG	FIXTURE TYPE	DESCRIPTION	SERVICE CONNECTIONS			
			SAN	VENT	HW	CW
W-1	BARRIER-FREE WATER CLOSET TANK-TYPE	WATER CLOSET SHALL BE EQUAL TO AMERICAN STANDARD "CADET PRO" MODEL #215AA104-020, WHITE, VITREOUS CHINA, ELONGATED BOWL, TANK TYPE, 1.28 GPF, FLOOR MOUNTED, 12" DOTTED DRAIN, 12" ROUGH-IN, SEAT SHALL BE EQUAL TO CHURCH MODEL #950SSCST, ELONGATED WHITE OPEN FRONT SEAT LEAST COVER, WATER CLOSET SHALL BE PROVIDED WITH CHROME PLATED SUPPLY WITH LOOSE KEY STOP EQUAL TO MCGUIRE #172.	3"	2"	-	1/2"
L-1	BARRIER-FREE LAVATORY WALL HUNG	LAVATORY SHALL BE EQUAL TO AMERICAN STANDARD "LUCERNE" MODEL #0355-012-020, VITREOUS CHINA, WALL HUNG, PROVIDE FAUCET EQUAL TO DELTA MODEL #21034 CENTERSET FAUCET WITH LEVER HANDLES, PROVIDE LAVATORY COMPLETE WITH GRID DRAIN, PREWRAPPED INSULATED, CAST BRASS, OFFSET TALPIECE AND P-TRAP WITH CLEANOUT (EQUAL TO MCGUIRE #PW2150WC) AND CHROME PLATED SUPPLIES (EQUAL TO MCGUIRE #175).	2"	1 1/2"	1/2"	1/2"
S-1	EXAM SINK	SINK SHALL BE EQUAL TO JUST MFG. MODEL SL-ADA-1815-A-GR, SINGLE BOWL, 18 GAUGE TYPE 304 STAINLESS STEEL. PROVIDE FAUCET EQUAL TO T&S BRASS MODEL #B-2860-09C-GR, DUAL LEVER HANDLES, VANDAL RESISTANT AERATOR. PROVIDE SINK COMPLETE WITH ONE STAINLESS STEEL BASKET STRAINER AND TALPIECE (EQUAL TO MCGUIRE #151A), CHROME PLATED SEMI-CAST BRASS P-TRAP (EQUAL TO MCGUIRE #8902), AND CHROME PLATED SUPPLIES WITH LOOSE KEY STOPS (EQUAL TO MCGUIRE #175LK).	2"	1 1/2"	1/2"	1/2"
S-2	TREATMENT SINK	SINK SHALL BE EQUAL TO JUST MFG. MODEL SL-2225-A-GR. PROVIDE FAUCET EQUAL TO T&S BRASS MODEL #B-1141-04, DUAL LEVER HANDLES, VANDAL RESISTANT AERATOR. PROVIDE SINK COMPLETE WITH ONE STAINLESS STEEL BASKET STRAINER AND TALPIECE (EQUAL TO MCGUIRE #151A), CHROME PLATED SEMI-CAST BRASS P-TRAP (EQUAL TO MCGUIRE #8902), AND CHROME PLATED SUPPLIES WITH LOOSE KEY STOPS (EQUAL TO MCGUIRE #175LK).	2"	1 1/2"	1/2"	1/2"
S-3	SCRUB SINK	SINK SHALL BE TRISTAR MODEL #300-35, WALL MOUNTED, STAINLESS STEEL. FAUCET SHALL BE TRISTAR MODEL #SEF-10W08, WALL MOUNT, GOOSE NECK INFRARED. CONTRACTOR SHALL COORDINATE WITH OWNER FOR CONNECTION SIZES, ROUGH-IN REQUIREMENTS AND NECESSARY ACCESSORIES. PROVIDE SINK COMPLETE WITH GRID DRAIN, ANGLE STOPS, FLEXIBLE RISER AND P-TRAP UPON COORDINATION WITH OWNER.	2"	1 1/2"	1/2"	1/2"
S-4	LAB FOOD PREP SINK	SINK SHALL BE EQUAL TO ELKAY MODEL #DL-ADA-2133, DOUBLE BOWL, THREE HOLE PUNCHING, 18 GAUGE TYPE 304 STAINLESS STEEL. PROVIDE FAUCET EQUAL TO T&S BRASS MODEL #B-2347-03, DUAL LEVER HANDLES, VANDAL RESISTANT AERATOR. PROVIDE SINK COMPLETE WITH ONE STAINLESS STEEL BASKET STRAINER AND TALPIECE (EQUAL TO MCGUIRE #151A), CHROME PLATED SEMI-CAST BRASS P-TRAP (EQUAL TO MCGUIRE #8902), AND CHROME PLATED SUPPLIES WITH LOOSE KEY STOPS (EQUAL TO MCGUIRE #175LK).	2"	1 1/2"	1/2"	1/2"
S-5	UTILITY SINK	SINK SHALL BE EQUAL TO STEELTON MODEL #522CS118NF, 24"x24"x12", SINGLE BOWL, 18 GAUGE TYPE 304 STAINLESS STEEL, STEEL LEGS, W/ GOOSENECK, DUAL LEVER HANDLE, 2.0 GPM FAUCET AND ONE STAINLESS STEEL BASKET STRAINER. PROVIDE TALPIECE, CHROME PLATED SEMI-CAST BRASS P-TRAP, AND CHROME PLATED SUPPLIES WITH LOOSE KEY STOPS.	2"	1 1/2"	1/2"	1/2"
S-6	CLINIC SERVICE SINK FLUSH VALVE FLOOR MOUNT	CLINIC SINK SHALL BE EQUAL TO AMERICAN STANDARD "CLINIC" MODEL #504-999-020, WHITE, VITREOUS CHINA, SQUARE BOWL, SIPHON .ET, 1.28 GPF, FLOOR MOUNTED, TOP SPUD, FLUSH VALVE SHALL BE AMERICAN STANDARD MODEL ULTIMA MODEL #6147121.002.	3"	2"	-	1"
S-7	CORNER SINK WALL HUNG	SINK SHALL BE EQUAL TO FINE FIXTURES MODEL #WH111W, VITREOUS CHINA, WALL HUNG, CORNER MOUNT. PROVIDE FAUCET EQUAL TO DELTA MODEL #21034 CENTERSET FAUCET WITH LEVER HANDLES. PROVIDE LAVATORY COMPLETE WITH GRID DRAIN, PREWRAPPED INSULATED, CAST BRASS, OFFSET TALPIECE AND P-TRAP WITH CLEANOUT (EQUAL TO MCGUIRE #PW2150WC) AND CHROME PLATED SUPPLIES (EQUAL TO MCGUIRE #175).	2"	1 1/2"	1/2"	1/2"
BS-1	BARRIER-FREE BREAK ROOM SINK	SINK SHALL BE EQUAL TO ELKAY MODEL #RAD-2521, SINGLE BOWL, FOUR PUNCHING, 18 GAUGE TYPE 304 STAINLESS STEEL. PROVIDE FAUCET EQUAL TO DELTA MODEL #404F-H0F, 8" CENTERS, SINGLE LEVER HANDLE, VANDAL RESISTANT AERATOR W/SPRAY. PROVIDE SINK COMPLETE WITH ONE STAINLESS STEEL BASKET STRAINER, OFFSET TALPIECE AND P-TRAP WITH CLEANOUT (EQUAL TO MCGUIRE #WH152WC) AND CHROME PLATED SUPPLIES WITH LOOSE KEY STOPS (EQUAL TO MCGUIRE #175LK).	2"	1 1/2"	1/2"	1/2"
T-1	4" TABLE TUB UNIT	TABLE AND FAUCET SHALL BE OWNER FURNISHED AND CONTRACTOR INSTALLED. PROVIDE VACUUM BREAKER AND HAIR INTERCEPTOR. PROVIDE TUB COMPLETE WITH STAINLESS STEEL FLEXIBLE RISERS, ANGLE STOPS AND P-TRAP.	2"	1 1/2"	1/2"	1/2"
T-3	GROOMING TUB	TUB AND FAUCET SHALL BE OWNER FURNISHED AND CONTRACTOR INSTALLED. PROVIDE VACUUM BREAKER AND HAIR INTERCEPTOR. PROVIDE TUB COMPLETE WITH STAINLESS STEEL FLEXIBLE RISERS, ANGLE STOPS AND P-TRAP.	2"	1 1/2"	1/2"	1/2"
HI	HAIR INTERCEPTOR	HAIR INTERCEPTOR SHALL BE MARBLE PRODUCTS CATCH-ALL HAIR TRAP IN LIEU OF FIXTURE TRAP, WITH REMOVABLE PERFORATED SCREEN, 1-1/2" THREADED INLET AND OUTLET.	1 1/2"	-	-	-
MS-1	MOP SINK	SINK SHALL BE EQUAL TO FLORESTONE MODEL #80, 24"x24"x12", PRECAST TERRAZZO WITH 6" DROP FRONT. PROVIDE FAUCET EQUAL TO DELTA MODEL #2819, INTEGRAL STOPS, VACUUM BREAKER, PAIL HOOK, THREADED SPOUT, AND LEVER HANDLES. PROVIDE SINK COMPLETE WITH MOP HANGER, HOSE WITH BRACKET, AND P-TRAP.	3"	1 1/2"	3/4"	3/4"
SH-1	SHOWER	SHOWER SHALL BE FREEDOM MODEL #PF3838BF, 4-PIECE, ACRYLIC, 0.5" THRESHOLD. PROVIDE SHOWER COMPLETE WITH DRAIN, GRAB BARS, TRANSFER SEAT AND CURTAIN, BATH VALVE ASSEMBLY SHALL BE EQUAL TO DELTA MODEL #T13291 TEMP & PRESS BALANCING VALVE ASSEMBLY W/ #PW324HDF HAND HELF SHOWER HEAD AND SLIDE BAR.	2"	1 1/2"	1/2"	1/2"
C-1	BARRIER-FREE BI-LEVEL ELECTRIC WATER COOLER	ELECTRIC WATER COOLER SHALL BE EQUAL TO ELKAY MODEL #E2SLRC, BI-LEVEL, PUSHBAR CONTROLS, NON-FILTERED, LIGHT GRAY GRANITE, W/ BOTTLE FILLER. PROVIDE WATER COOLER COMPLETE WITH ANGLE SUPPLY LOOSE KEY STOP (EQUAL TO MCGUIRE #175LK), P-TRAP (EQUAL TO MCGUIRE #8902), AND CARRIER.	2"	1 1/2"	-	1/2"
C-2	ELECTRIC WATER WATER COOLER	ELECTRIC WATER COOLER SHALL BE ELKAY MODEL #E2SBL, SINGLE ADA, WALL HUNG, PUSHBAR CONTROLS, NON-FILTERED, LIGHT GRAY GRANITE, PROVIDE WATER COOLER COMPLETE WITH ANGLE SUPPLY LOOSE KEY STOP (EQUAL TO MCGUIRE #175LK), P-TRAP (EQUAL TO MCGUIRE #8902), AND CARRIER.	2"	1 1/2"	-	1/2"
C-3	ELECTRIC WATER WATER COOLER BOTTLE FILLER	ELECTRIC WATER COOLER SHALL BE ELKAY MODEL #E2SRWSLK, SINGLE ADA, WALL HUNG, PUSHBAR CONTROLS, NON-FILTERED, LIGHT GRAY GRANITE, W/ BOTTLE FILLER. PROVIDE WATER COOLER COMPLETE WITH ANGLE SUPPLY LOOSE KEY STOP (EQUAL TO MCGUIRE #175LK), P-TRAP (EQUAL TO MCGUIRE #8902), AND CARRIER.	2"	1 1/2"	-	1/2"
EW	EMERGENCY EYE/FASH WASH	EMERGENCY EYE/FACE WASH SHALL BE HAWS MODEL 7610 BARRIER-FREE SINK/COUNTERTOP EYE/FACE WASH. INCLUDE AN AXION MSR EYE/FACE WASH HEAD, POLISHED CHROME BRASS SINGLE ACTION PULL-DOWN VALVE BODY, WHEEL CHAIR ACCESSIBILITY, UNIVERSAL SIGN AND 1/2" O.D. SLIP JOINT INLET. PROVIDE WITH TEMPERED WATER BLENDING VALVE MODEL 9201EFE.	2"	1 1/2"	1/2"	1/2"
TWDS-1	TRENCH DRAIN WASH-DOWN SYSTEM	TRENCH WASH-DOWN SYSTEM SHALL BE EQUAL TO VALOR SV-16 (2") SOLENOID VALVE. ALL SOLENOID VALVES SHALL BE CONNECTED TO AN INTERMATIC TIME CLOCK WITH REMOTE OVERRIDES AT EACH RUN ROOM. PROVIDE WITH FEDCO ATMOSPHERIC VACUUM BREAKER. VACUUM BREAKER SHALL BE INSTALLED ON THE DISCHARGE SIDE OF THE LAST SHUT-OFF VALVE AND SHALL HAVE ALL BRONZE BODIES AND BONNETS AND SHALL BE OF THE NON-SPILLING TYPE. SEE ARCHITECTURAL SHEET AS02 FOR MORE INFORMATION.	-	-	-	1/2"
IMB	ICE MACHINE BOX	ICE MACHINE BOX SHALL BE EQUAL TO GUY GRAY MODEL #FRIB-12 FIRE RATED.	-	-	-	1/2" W/ VACUUM BREAKER
WMB	WASHING MACHINE BOX	WASHING MACHINE BOX SHALL BE OATEY MODEL #38470, QUATER TURN, SWEAT VALVES WITH MOUNTED WATER HAMMER ARRESTORS, MOLDED PLASTIC BOX.	3"	2"	1/2"	1/2" W/ VACUUM BREAKER AND SA#1
WSB	WATER SUPPLY BOX	WATER SUPPLY BOX SHALL BE EQUAL TO OATEY MODEL #37897, QUATER TURN, SWEAT VALVE, PROVIDE COVER PLATE.	-	-	-	1/2" W/ VACUUM BREAKER
HB	HOSE BIBB VALVE	HOSE BIBB SHALL BE EQUAL TO WOODFORD MODEL #24.	DWGS.	-	-	1/2" PROVIDE WITH METAL HANDLE
FPH	WALL HYDRANT	FREEZE PROOF HYDRANT SHALL BE EQUAL TO WOODFORD MODEL #65.	-	-	-	1/2"
HS	HOSE STATION	HOSE BIBB SHALL BE EQUAL TO WOODFORD MODEL #122.	-	-	1/2"	1/2"
BV	BALANCING VALVE	BALANCING VALVE SHALL BE THERMOMEGA TECH "CIRCUI SOLVER" MODEL CSU. PROVIDE SHUT-OFFS AT VALVE.	-	-	-	-
ADB	AUX DRAIN BOX	AUX DRAIN BOX SHALL BE EQUAL TO GUY GRAY MODEL #RAD12.	2"	1 1/2"	-	- MOUNT 12"AFF W/ACCESSORY GRILLE
FD	FLOOR DRAIN	FLOOR DRAIN SHALL BE SIOUX CHIEF MODEL #B32-36PNRV, PVC BODY, NICKEL BRONZE STRAINER, VANDAL RESISTANT SCREWS, DEEP SEAL P-TRAP, 4" NO-HUB CONNECTION, CUSTOM COVER, DRAIN SYSTEM, COORDINATE WITH GENERAL CONTRACTOR FOR LENGTH.	SEE DWGS.	-	-	- PROVIDE TRAP GUARD CONNECTION AS REQUIRED.
FS	FLOOR SINK	FLOOR SINK SHALL BE EQUAL TO ZURN MODEL #2-1900-2 . PROVIDE FLOOR SINK WITH P-TRAP.	SEE DWGS.	-	-	- PROVIDE TRAP GUARD CONNECTION AS REQUIRED.
TD	TRENCH DRAIN	TRENCH DRAIN SHALL BE TRI-STAR 4"WIDE, INTEGRAL SLOPE, STAINLESS STEEL GRATE WITH 1/2"HOLES, 14 GA. DEEP SEAL P-TRAP, 4" NO-HUB CONNECTION, CUSTOM COVER, DRAIN SYSTEM, COORDINATE WITH GENERAL CONTRACTOR FOR LENGTH.	SEE DWGS.	-	-	- PROVIDE FACTORY INSTALLED REMOVABLE STRAINER AND HINGED ACCESS COVER AT DRAIN CONNECTION.
FCO	FLOOR CLEANOUT	FLOOR CLEANOUT SHALL BE EQUAL TO ZURN MODEL #2S-1400. CLEANOUT.	SEE DWGS.	-	-	- GAS/WATER TIGHT ABS PLUG
WCO	WALL CLEANOUT	WALL CLEANOUT SHALL BE EQUAL TO ZURN MODEL #2S-1468. ACCESS COVER AND PLUG.	SEE DWGS.	-	-	- GAS/WATER TIGHT ABS PLUG

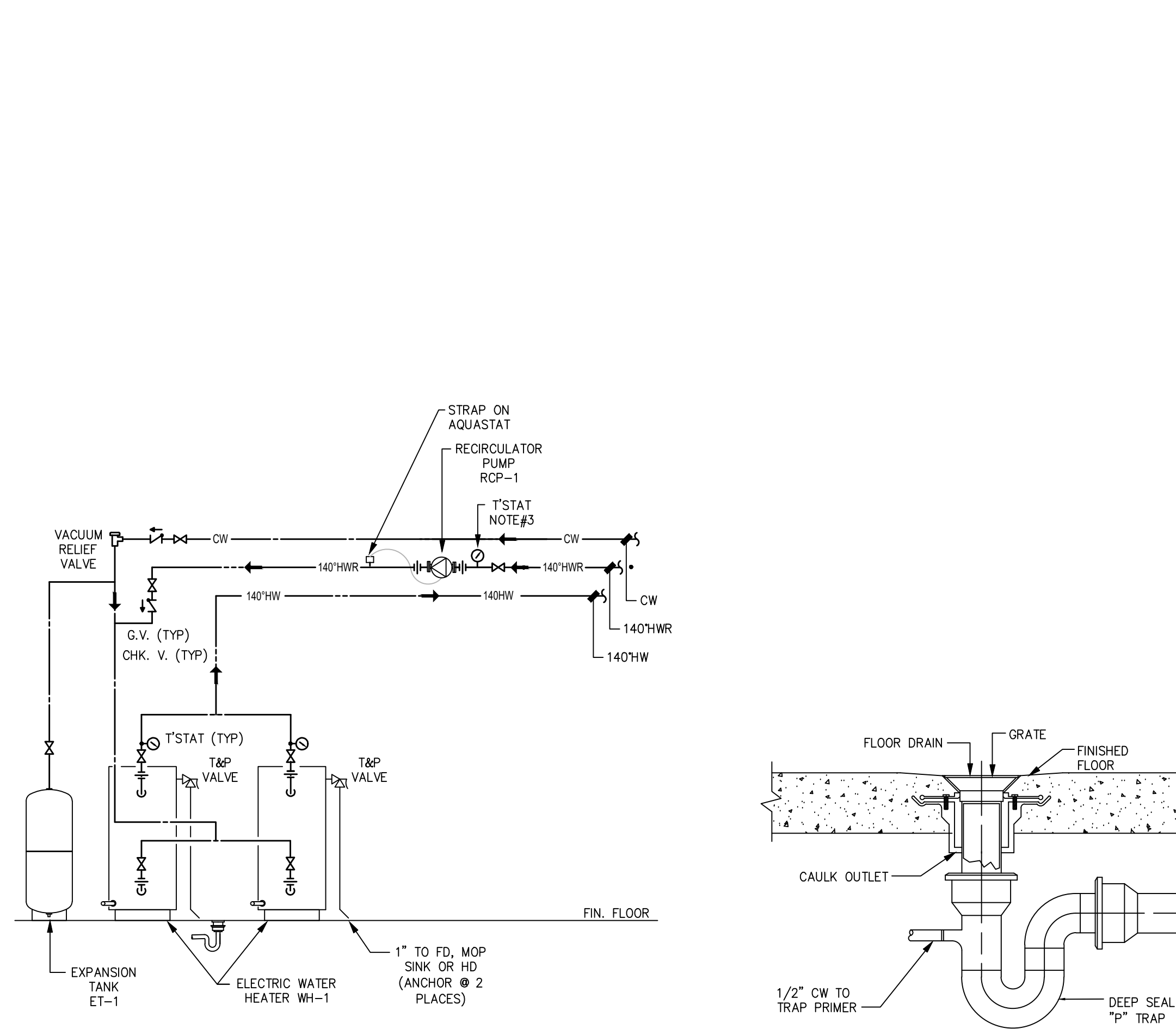
ELECTRIC WATER HEATER SCHEDULE												
TAG	DESCRIPTION	ELECTRICAL DATA						SELECTION BASED ON		REMARKS/OPTIONS		
		GALLONS STORAGE	NO ELEMENTS	KW	TOTAL KW	VOLTAGE	PHASE	HERTZ	RECOVERY GPH/RISE		MANUFACTURER	MODEL NUMBER
WH-1A	BUILDING	120	3	6.0	18.0	208	3	60	109/90"	A.O. SMITH	DRE-120-18	NOTE 1, B
WH-1B	BUILDING	120	3	6.0	18.0	208	3	60	109/90"	A.O. SMITH	DRE-120-18	NOTE 1, B
OPTIONS (ALL UNITS)						ADDITIONAL OPTIONS (UNITS AS NOTED)						
<ul style="list-style-type: none">• CODE APPROVED VACUUM BREAKER, TEMPERATURE/PRESSURE RELIEF VALVE AND INTEGRAL OR FIELD SUPPLIED HEAT TRAPS.• THERMAL EXPANSION TANK ON CW MAKE-UP. SEE TANK SCHEDULE.• SERVICE BALL VALVES ON HW/CW MAINS						A: WATER HEATER WIRED FOR NON-SIMULTANEOUS USE OR SINGLE ELEMENT.						
						B: WATER HEATER WIRED FOR SIMULTANEOUS DUAL ELEMENT USE.						
						C: WATER HEATERS OVER 120 GALLONS OR 2007" SHALL BE A.S.M.E. LISTED.						
						D: WATER HEATERS SUPPLYING KITCHENS SHALL BE N.S.F. APPROVED.						
						E: WATER HEATER MOUNTED BELOW LAVATORY OR SINK.						
NOTES:												
1. INSTALL WATER HEATER PER MANUFACTURERS REQUIREMENTS. COORDINATE ALL CONNECTION POINTS IN THE FIELD.												

EXPANSION TANK SCHEDULE							
TAG	DESCRIPTION	VOLUME (GALLONS)	DIAMETER (INCHES)	HEIGHT (INCHES)	SELECTION BASED ON		REMARKS
					MANUFACTURER	MODEL NUMBER	
ET-1	BLADDER TYPE	16.5	15"	25"	AMTROL	ST-30VC	NOTE 1
NOTES:							
1. INSTALL EXPANSION TANK ON IN-COMING COLD WATER PER MANUFACTURERS REQUIREMENTS.							

PUMP SCHEDULE											
TAG	DESCRIPTION	TYPE	CAPACITY		ELECTRICAL DATA				SELECTION BASED ON		REMARKS/OPTIONS
			GPM	HEAD (ft.)	HP	V	PH	HZ	MANUFACTURER	MODEL NUMBER	
ROP-1	HOT WATER RECIRC. PUMP	IN-LINE	2.5	20	1/8	120	1	60	BELL & GOSSETT	PL-30-B	NOTE 1,2
SP-1	SUMP PUMP	SUBMERSIBLE	50	20	0.5	120	1	60	STANCOR	SE50-0-M ELV	NOTE 3, A
OPTIONS (ALL ROP UNITS)			OPTIONS (ALL SUMP UNITS)				ADDITIONAL OPTIONS (UNITS AS NOTED)				
• AQUA-STAT & NIGHT TIMER			• 30"x30"x30" BASIN BY G.C.				A: OIL-MINDER ALARM/CONTROL SYSTEM				
• FLANGED PUMP			• DISCHARGE CHECK VALVE				B:				
• BALANCING VALVE & CHECK VALVE			• DISCHARGE BALL VALVE				C:				
• MAINTENANCE BALL VALVES ON BOTH SIDES OF PUMP			• ---				D:				
NOTES:											
1. SET AQUA-STAT WITH SET POINT 10 DEGREES BELOW SYSTEM SUPPLY TEMP.											
2. INSTALL RECIRCULATION PUMP PER MANUFACTURERS REQUIREMENTS.											
3. INSTALL OIL-MINDER ALARM/CONTROL PANEL ON WALL AT ELEVATOR PER MANUFACTURERS REQUIREMENTS. FIELD VERIFY EXACT LOCATION.											

MIXING VALVE SCHEDULE							
TAG	DESCRIPTION	MAXIMUM GPM	MINIMUM GPM	PRESSURE LOSS	SELECTION BASED ON		REMARKS/OPTIONS
					MANUFACTURER	MODEL NUMBER	
MV-1	THERMOSTATIC MIXING VALVE	3.5	.25	5	LEONARD	270-LF	NOTE 1, A
OPTIONS (ALL UNITS)					ADDITIONAL OPTIONS (UNITS AS NOTED)		
• LEAD FREE NSF APPROVED					A: ASSE 1070 APPROVED, SET @ 100° F. 1/2" INLETS/ 1/2" OUTLET, MOUNT BELOW FIXTURE		
• PROVIDE T'STAT ON TEMPERED LINE							
NOTES:							
1. INSTALL MIXING VALVE PER MANUFACTURERS REQUIREMENTS. PROVIDE ALL PIPING AND VALVES PER O&M MANUAL.							

INTERCEPTOR SCHEDULE										
TAG	DESCRIPTION	INLET/OUTLET SIZE (INCHES)	FLOW RATE (GPM)	CAPACITY				SELECTION BASED ON		REMARKS/OPTIONS
				WATER (GAL)	GREASE (LBS)	SOLIDS (GAL)	OIL (GAL)	MANUFACTURER	MODEL NUMBER	
LI-1	LINT INTERCEPTOR	3"	50	21	-	4	-	STRIEM	AA-3	NOTE 1
LI-2	LINT INTERCEPTOR	1.5"	25	-	-	-	-	FILTROL	IN-LINE FILTER	MEETS IPC 1003.6
OPTIONS (ALL UNITS)				ADDITIONAL OPTIONS (UNITS AS NOTED)						
• DISCHARGE BACKWATER VALVE IN SEPARATE VALVE BOX • ---				A: NEMA 4X ALARM PANEL, SEE NOTE #2, SINGLE POINT ELECTRICAL CONNECTION						
				B: PROVIDE H-20 TRAFFIC RATED RELIEF VALVE PER MANUFACTURERS REQUIREMENTS.						
				C: PROVIDE EXTERNAL, VENTED FLOW CONTROL @ SCHEDULED FLOW RATE.						
				D: MOUNT ON FLOOR, TERMINATE WASTE LINE TO FLOOR SINK W/ AIR GAP.						
NOTES:										
1. INSTALL INTERCEPTOR PER MANUFACTURERS REQUIREMENTS. COORDINATE ALL CONNECTION POINTS IN THE FIELD.										
2. PROVIDE AUDIBLE AND VISUAL ALARM SYSTEM THAT INDICATES HIGH WATER LEVEL (VISUAL ONLY) AND HIGH-HIGH WATER LEVEL (AUDIBLE AND VISUAL) OF WATER LEVEL IN BASIN. A SILENCE CONTROL SHALL BE PROVIDED FOR THE AUDIBLE ALARMS. LEVEL SENSOR(S) TO BE INTRINSICALLY SAFE. LEVEL SENSOR FLOATS TO BE MADE OF STAINLESS STEEL. POWER TO THE CONTROL PANEL IS TO BE [208] VOLT, [1] PHASE BY E.C. CONTROL/POWER WIRING FROM PANEL TO PUMP PROVIDED BY P.C. AND INSTALLED BY E.C.										



1 ELECTRIC WATER HEATER
SCALE: NONE
NOTES:
1. DRAWINGS FOR SCHEMATIC PURPOSES ONLY.
ALL VALVES & EQUIPMENT MUST BE INSTALLED PER MANUFACTURERS INSTRUCTIONS.



2 TYPICAL FLOOR DRAIN DETAIL
SCALE: NONE
NOTE:
P.C. SHALL PROVIDE TRAP GUARD AT DRAINS NOT WASHED BY A HOSE BIBB. TRAP GUARD = ZURN #21022. PROVIDE TRAP PRIMER IF REQUIRED BY A.H.J. PRIMER = ZURN MODEL #21022 OR APPROVED EQUAL.

SHOCK ARRESTOR TABLE					
TAG	PDI WH201 DESIGNATION	FIXTURE UNITS	SELECTION BASED ON		REMARKS
			MANUFACTURER	MODEL NUMBER	
SA#1	AA	1-3	SIOUX CHIEF	660	NOTE 1
SA#2	A	4-11	SIOUX CHIEF	652-A	NOTE 1
SA#3	B	12-32	SIOUX CHIEF	653-B	NOTE 1
SA#4	C	33-60	SIOUX CHIEF	654-C	NOTE 1
SA#5	D	61-113	SIOUX CHIEF	655-D	NOTE 1
NOTES:					
1. INSTALL ARRESTORS PER PDI WH201 AND MANUFACTURERS REQUIREMENTS.					

TAG	FIXTURE TYPE	DESCRIPTION
OM	OXYGEN MANIFOLD	OXYGEN MANIFOLD SHALL BE AMICO MODEL M3EC-S-I

NOTES THIS SHEET

- ① SEE SHEETS P001-002 FOR SCHEDULES, DETAILS AND SPECIFICATIONS.
- ② ROUTE 1 1/2" ELEVATOR SUMP PUMP DISCHARGE BELOW FLOOR TO MOP SINK IN JANITORS CLOSET #116. TURN UP IN WALL AND DISCHARGE INTO MOP SINK WITH CODE APPROVED AIR GAP.
- ③ PLUMBING CONTRACTOR SHALL TIE THE DOG PEN DRAINS TOGETHER AND ROUTE ABOVE SLAB TO FLOOR SINKS. TERMINATE AT SINK WITH CODE APPROVED AIR GAP.

M MICHAEL SCHON, PE
1000 ROUTE 92
MONROE, NC 28112
P: 704.995.7020

BDA



ROCKLAND GREEN CENTER FOR ANIMAL
RESCUE AND EDUCATIONAL
SERVICES, INC.
R.G. C.A.R.E.S. ANIMAL SHELTER
427 BEACH RD. LOCATED IN THE TOWN OF
HARVERSTRAW, NY 10993

MAIN LEVEL
FLOOR PLAN - WASTE - WEST

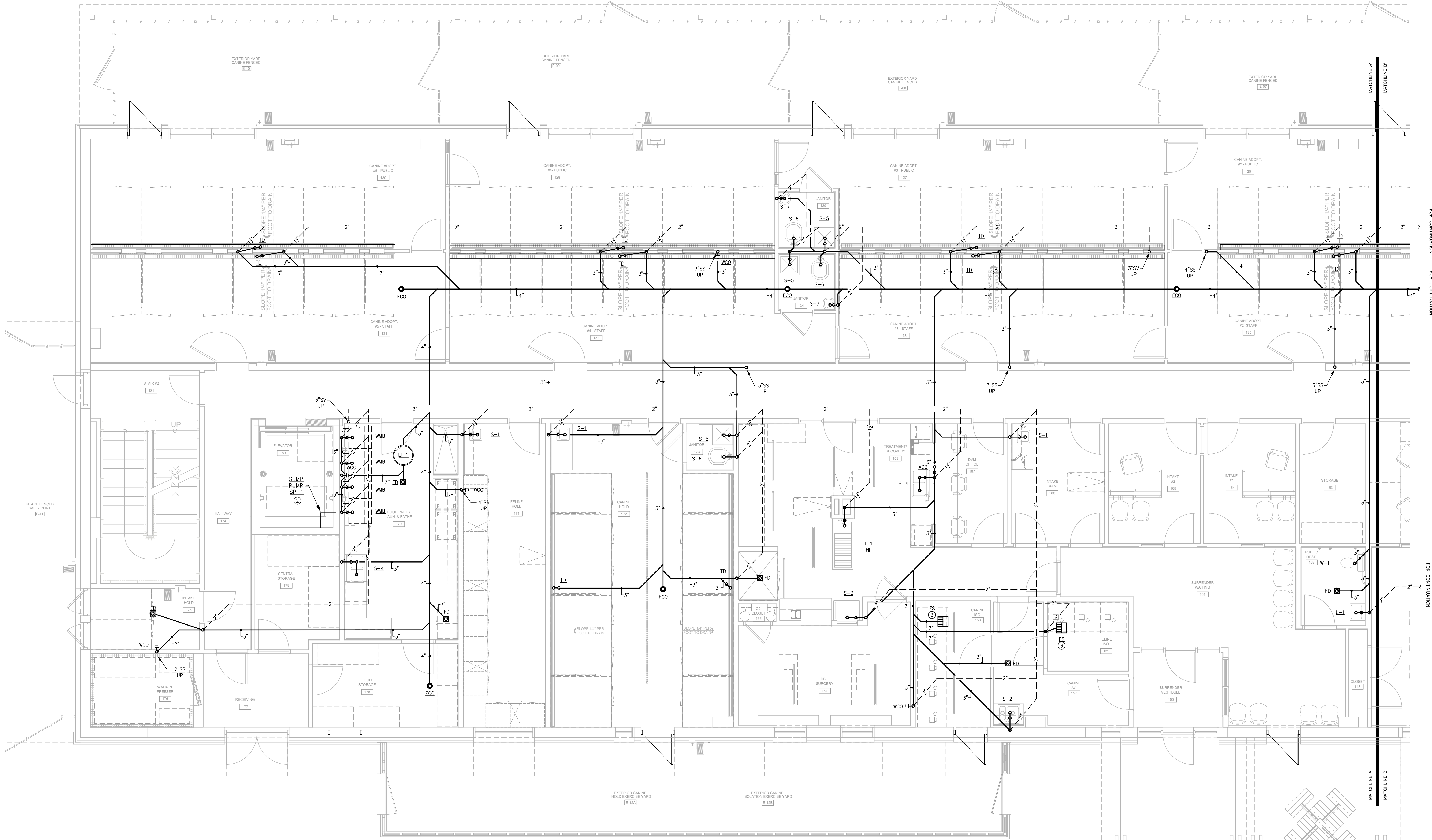
REV. #	DATE	COMMENTS
1	07/08/24	ISSUED FOR PERMIT

INITIALS	REVISIONS
BDA DSGN. REV.	
BDA TECH REV.	

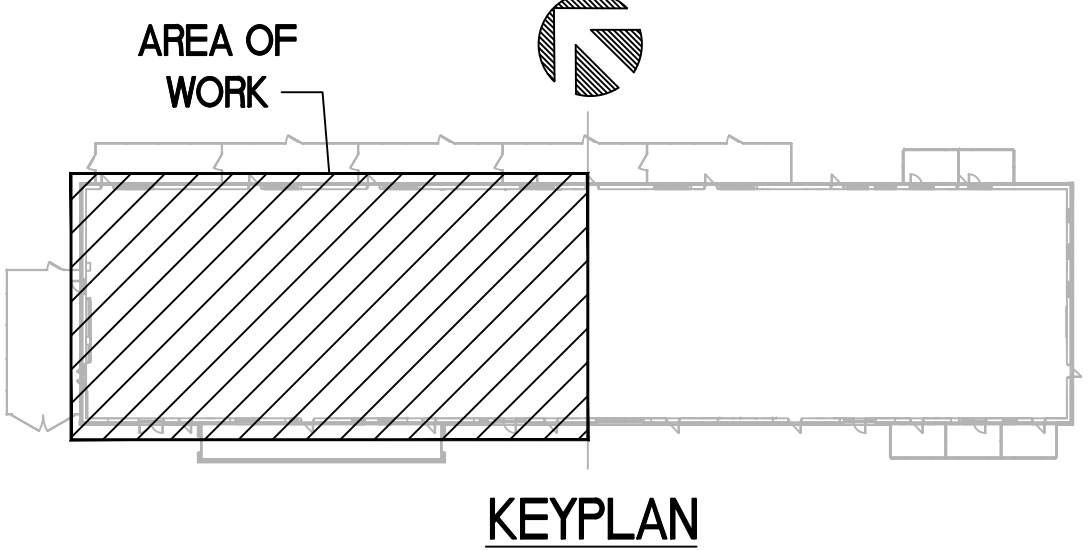
RGAS
PROJECT NO.: 23077
DRAWN: WRB
DATE: 07/08/2024

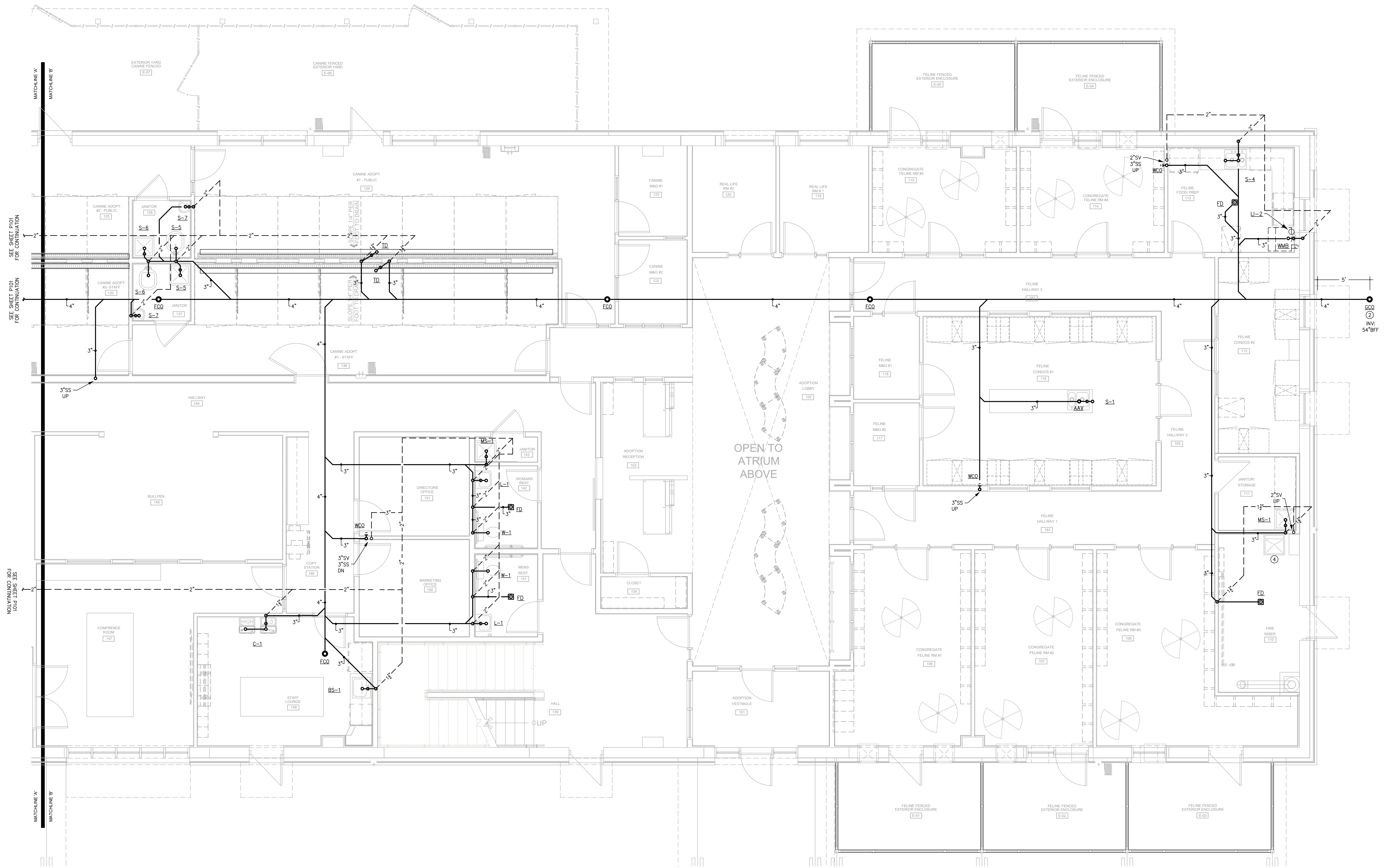
P101

3 OF 11

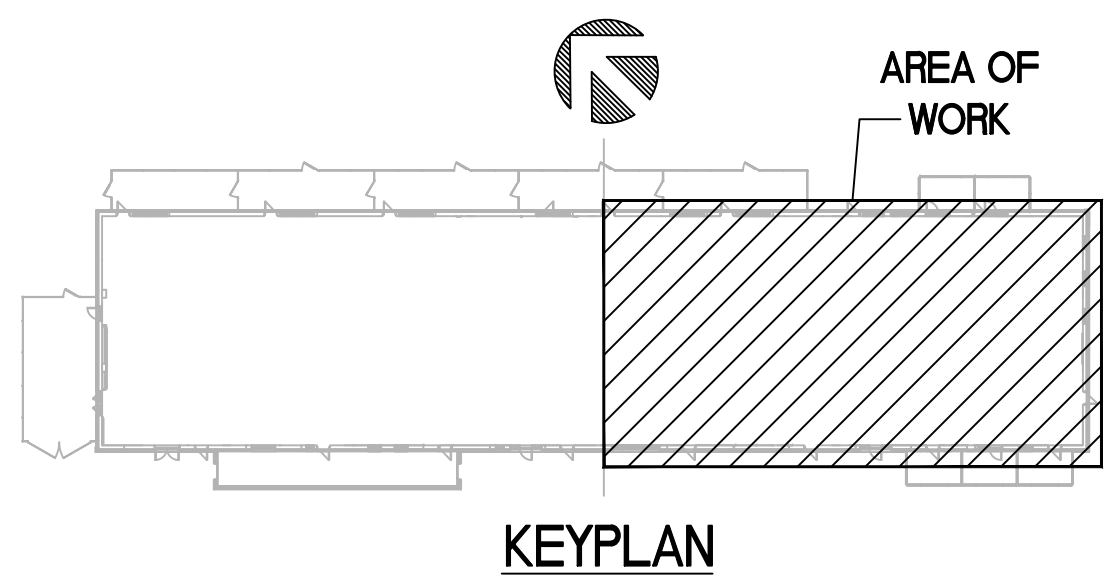


1
MAIN LEVEL
FLOOR PLAN - WASTE - WEST
SCALE: 1/4" = 1'-0"





1
MAIN LEVEL
FLOOR PLAN - WASTE - EAST
SCALE: 1/4" = 1'-0"



NOTES THIS SHEET

- SEE SHEETS P001-002 FOR SCHEDULES, DETAILS AND SPECIFICATIONS.
- PLUMBING CONTRACTOR SHALL TIE NEW SANITARY SEWER MAIN INTO CIVIL PROVIDED TAP. FIELD VERIFY EXACT LOCATION, INVERT ELEVATION AND FLOW DIRECTION. SEE CIVIL PLANS FOR CONTINUATION.
- PLUMBING CONTRACTOR SHALL MOUNT REMOTE LINT TRAP ABOVE WASHER PER MANUFACTURERS REQUIREMENTS. PIPE DISCHARGE TO WASHER BOX. FIELD VERIFY EXACT LOCATION.
- PLUMBING CONTRACTOR SHALL RECONNECT EXISTING UTILITY SINK TO NEW SANITARY SEWER LINE. FIELD VERIFY EXACT LOCATION AND INVERT ELEVATION.

M MICHAEL SCHON, PE

1000 ROUTE 92
MONROE, NY 28112
P: 704.995.7020

BDA



ROCKLAND GREEN CENTER FOR ANIMAL
RESCUE AND EDUCATIONAL
SERVICES, INC.
R.G. C.A.R.E.S. ANIMAL SHELTER
427 BEACH RD. LOCATED IN THE TOWN OF
HARVERSTRAW, NY 10993

MAIN LEVEL
FLOOR PLAN - WASTE - EAST

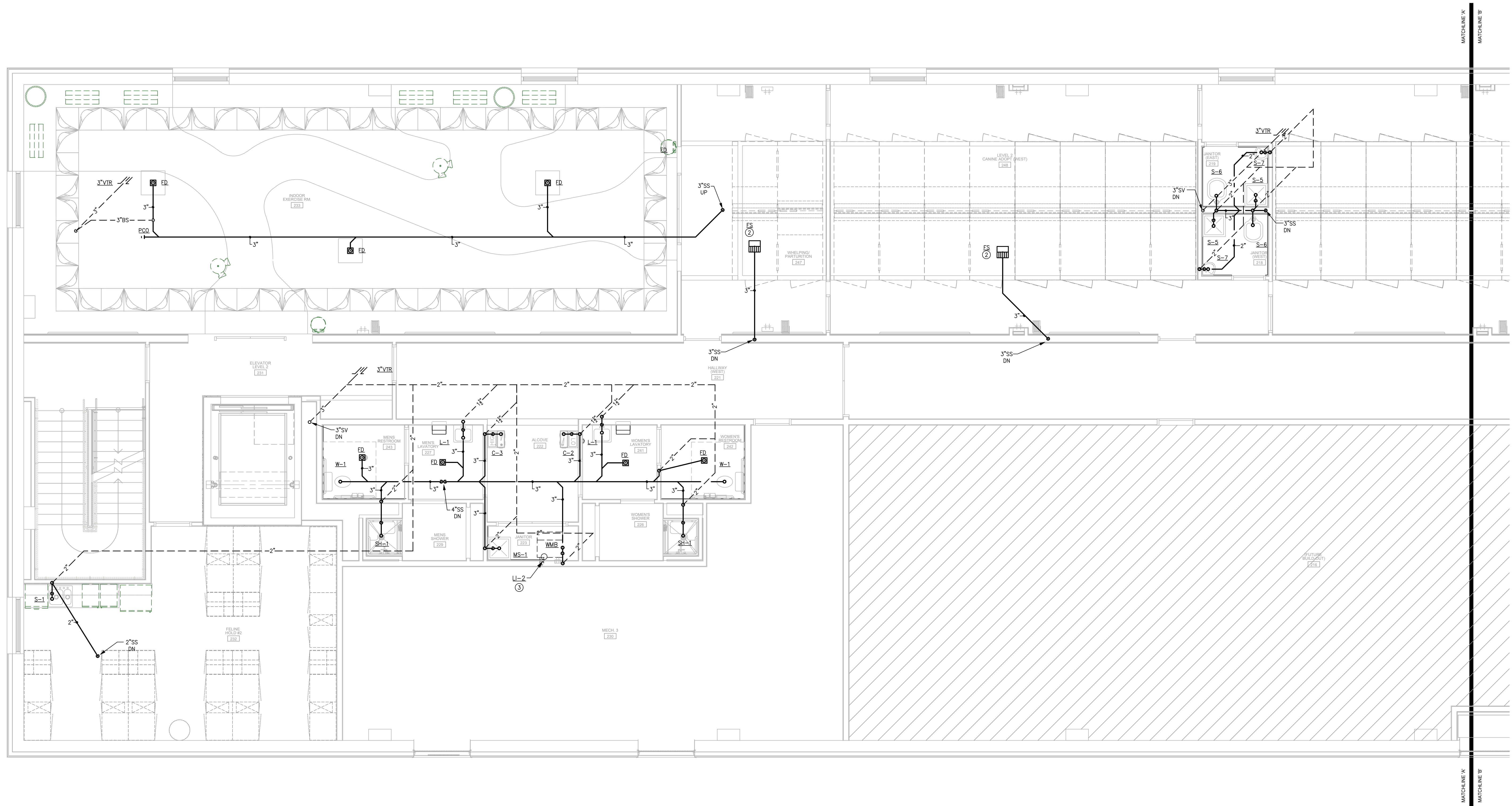
REV.#	DATE	COMMENTS
REVISION:		
REVISION:		
REVISION:		

INITIALS	REVIEWS
	BDA DSGN. REV.
	BDA TECH REV.

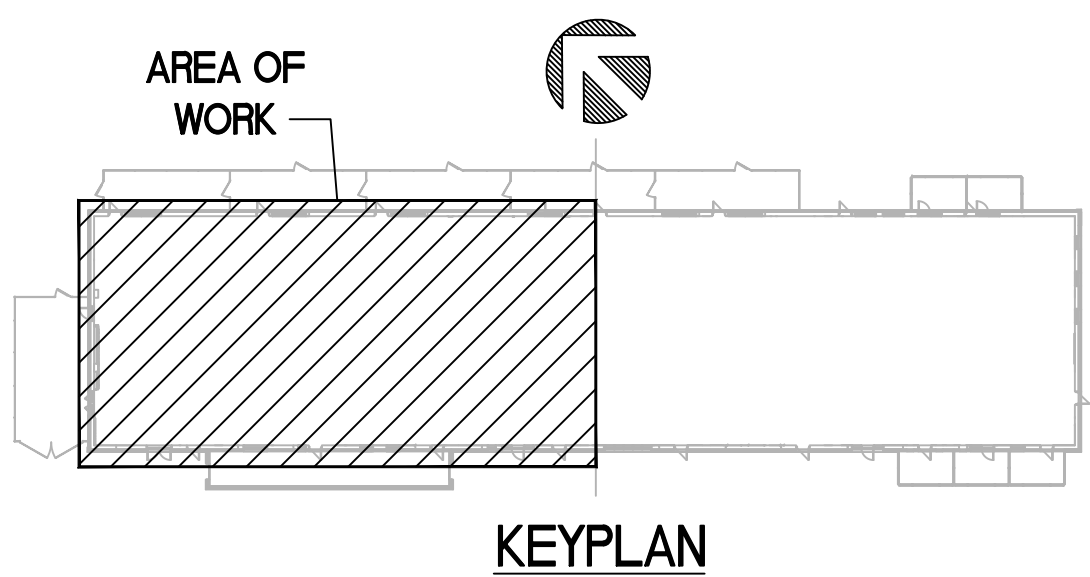
RGAS
PROJECT NO.: 23077
DRAWN: WRB
DATE: 07/08/2024

P102

4 OF 11



1 UPPER LEVEL
FLOOR PLAN - WASTE - WEST
SCALE: 1/4" = 1'-0"



NOTES THIS SHEET

- SEE SHEETS P001-002 FOR SCHEDULES, DETAILS AND SPECIFICATIONS.
- PLUMBING CONTRACTOR SHALL TIE THE DOG PEN DRAINS TOGETHER AND ROUTE ABOVE SLAB TO FLOOR SINKS. TERMINATE AT SINK WITH CODE APPROVED AIR GAP.
- PLUMBING CONTRACTOR SHALL MOUNT REMOTE LINT TRAP BESIDE WASHER PER MANUFACTURERS REQUIREMENTS. PIPE DISCHARGE TO WASHER BOX. FIELD VERIFY EXACT LOCATION.

M MICHAEL SCHON, PE
100 WEST 17TH STREET
MONROE, NC 28112
P: 704.995.7020

BDA



ROCKLAND GREEN CENTER FOR ANIMAL
RESCUE AND EDUCATIONAL
SERVICES, INC.
R.G. C.A.R.E.S. ANIMAL SHELTER
427 BEACH RD. LOCATED IN THE TOWN OF
HARVERSTRAW, NY 10993

UPPER LEVEL
FLOOR PLAN - WASTE - WEST

REV. #	DATE	COMMENTS
REVISION:	-	-
REVISION:	-	-
REVISION:	-	-

INITIALS	REVIEWS
BDA DSGN. REV.	
BDA TECH REV.	

RGAS
PROJECT NO.: 23077
DRAWN: WRB
DATE: 07/08/2024

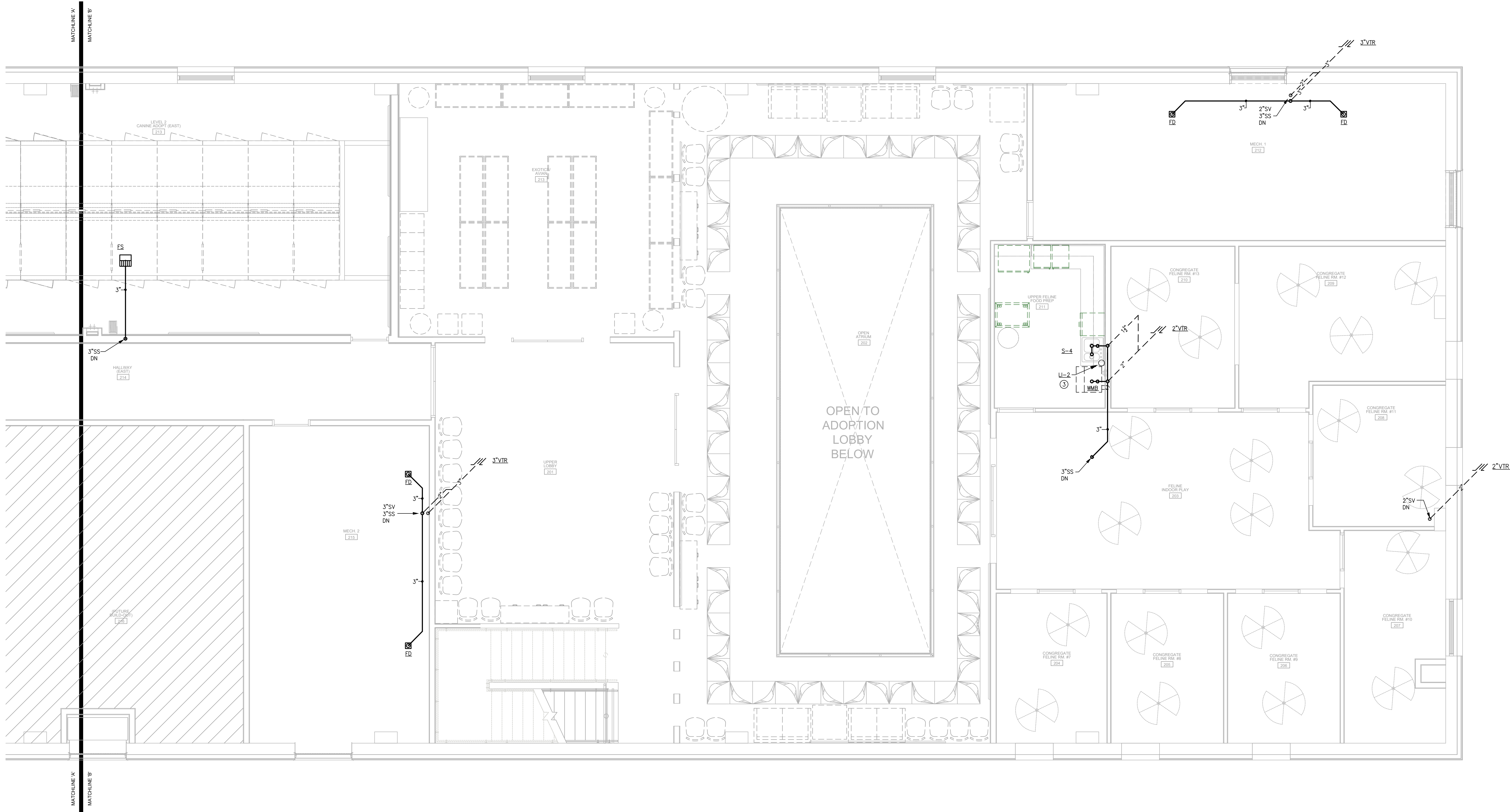
P103

- NOTES THIS SHEET
- 1

SEE SHEETS P001-002 FOR SCHEDULES, DETAILS AND SPECIFICATIONS.
- 2

PLUMBING CONTRACTOR SHALL TIE NEW SANITARY SEWER MAIN INTO CIVIL PROVIDED TAP. FIELD VERIFY EXACT LOCATION, INVERT ELEVATION AND FLOW DIRECTION. SEE CIVIL PLANS FOR CONTINUATION.
- 3

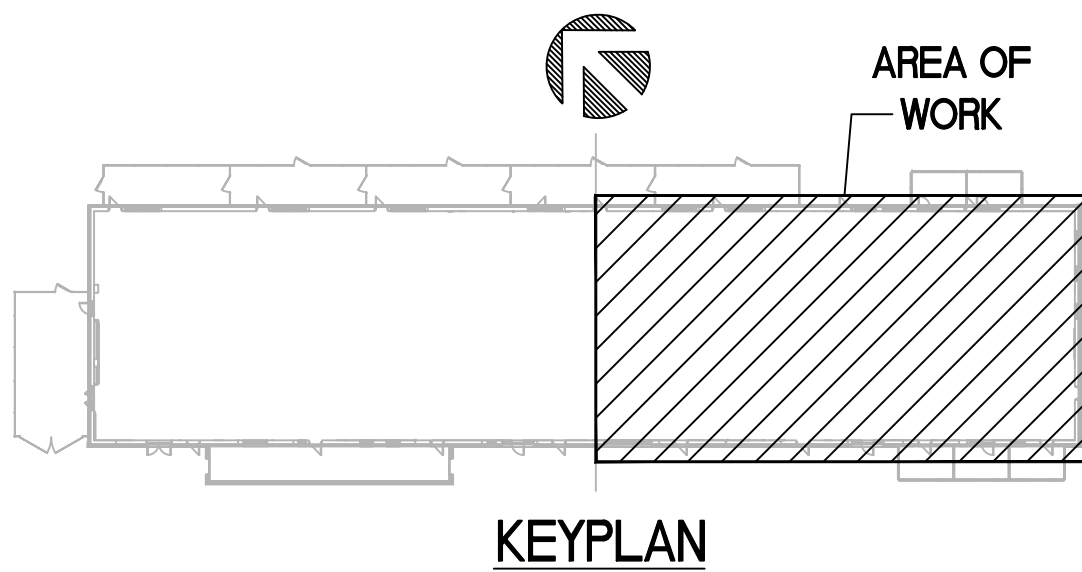
PLUMBING CONTRACTOR SHALL MOUNT REMOTE LINT TRAP BESIDE WASHER PER MANUFACTURERS REQUIREMENTS. PIPE DISCHARGE TO WASHER BOX. FIELD VERIFY EXACT LOCATION.



1

UPPER LEVEL
FLOOR PLAN - WASTE - EAST

SCALE: 1/4" = 1'-0"



ROCKLAND GREEN CENTER FOR ANIMAL
RESCUE AND EDUCATIONAL
SERVICES, INC.
R.G. C.A.R.E.S. ANIMAL SHELTER
427 BEACH RD. LOCATED IN THE TOWN OF
HARVERSTRAW, NY 10993

UPPER LEVEL
FLOOR PLAN - WASTE - EAST

REV. #	DATE	COMMENTS
REVISION:	-	-
REVISION:	-	-
REVISION:	-	-

INITIALS	REVIEWS
BDA DSGN. REV.	
BDA TECH REV.	

RGAS
PROJECT NO.: 23077
DRAWN: WRB
DATE: 07/08/2024

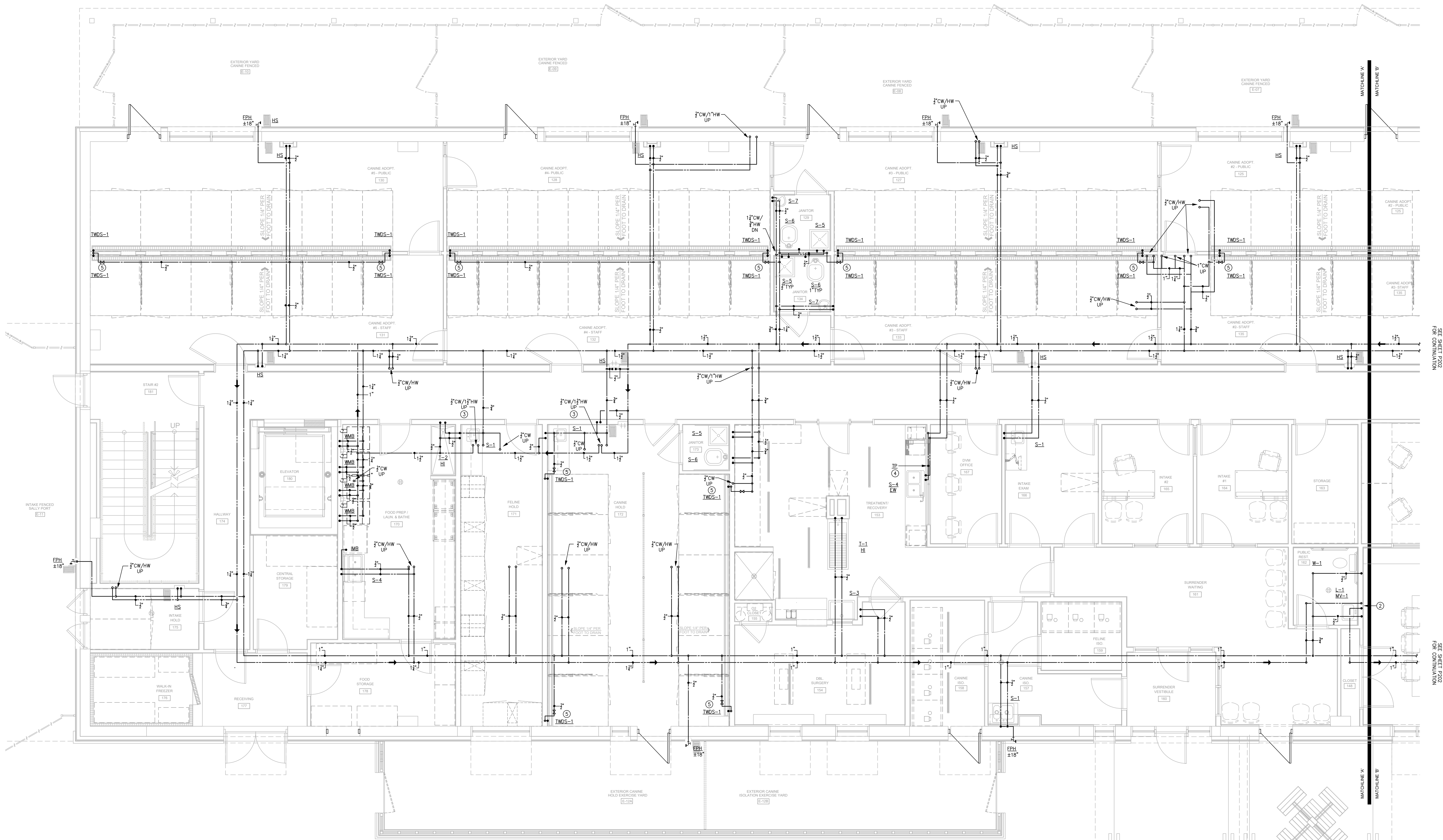
M MICHAEL SCHON, PE
LICENSED PROFESSIONAL ENGINEER
STATE OF NEW YORK
LICENSE NO. 23813
P: 704.995.7020

BDA

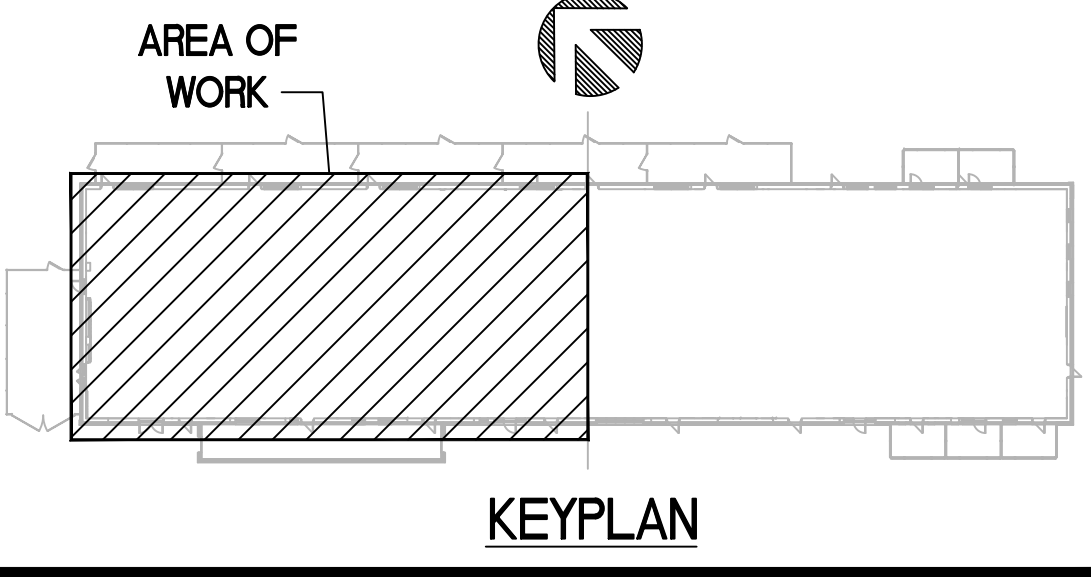


NOTES THIS SHEET

- SEE SHEETS P001-002 FOR SCHEDULES, DETAILS AND SPECIFICATIONS.
- ROUTE HW DN IN WALL TO 12" AFF. ROUTE TO LAVATORY HW SUPPLIES, PROVIDE TAP AND TURN BACK UP TO ABOVE CEILING.
- ROUTE HW UP TO SECOND FLOOR TO 12" AFF. ROUTE TO LAVATORY HW SUPPLIES, PROVIDE TAP AND TURN BACK DN TO FIRST FLOOR CEILING.
- ROUTE 3" CW FROM TRAP PRIMER TP TO ADB. FIELD VERIFY EXACT LOCATION.
- TRENCH WASH-DOWN SYSTEM SHALL BE CONNECTED TO AN INTERMATIC TIME CLOCK WITH REMOTE OVERRIDES AT EACH RUN ROOM. SEE ARCHITECTURAL SHEET A502 FOR MORE INFORMATION.



1
MAIN LEVEL
FLOOR PLAN - WATER - WEST
SCALE: 1/4" = 1'-0"



ROCKLAND GREEN CENTER FOR ANIMAL
RESCUE AND EDUCATIONAL
SERVICES, INC.
R.G. C.A.R.E.S. ANIMAL SHELTER
427 BEACH RD. LOCATED IN THE TOWN OF
HARVERSTRAW, NY 10993

MAIN LEVEL
FLOOR PLAN - WATER - WEST

REV.#	DATE	COMMENTS
1		

INITIALS	REVISIONS
BDA DSGN. REV.	
BDA TECH REV.	

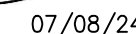
RGAS
PROJECT NO.: 23077
DRAWN: WRB
DATE: 07/08/2024
P201
7 OF 11

M MICHAEL SCHON, PE
1000 ROUTE 92
MONROE, NY 28112
P: 704.995.7020

BDA



- ① SEE SHEETS P001-002 FOR SCHEDULES, DETAILS AND SPECIFICATIONS.
- ② PLUMBING CONTRACTOR SHALL THE NEW 2" CW LINE INTO EXISTING 2" CW RISER. PROVIDE SHUT-OFF VALVE AND FLOW IF REQUIRED. FIELD VERIFY EXIST. LOCATION.
- ③ PLUMBING CONTRACTOR SHALL MOUNT WATER HEATER ON 18" PLATFORM WITH DRAIN PAN. ROUTE DRAIN PAN DRAIN TO FLOOR DRAIN WITH CODE APPROVED AIR GAP.
- ④ ROUTE HW DN IN WALL TO 12" AFF. ROUTE TO LAVATORY HW SUPPLIES. PROVIDE TAP AND TURN BACK UP TO ABOVE CEILING.
- ⑤ THE DISHWASHER SUPPLIES INTO BREAK SINK SUPPLIES.
- ⑥ PLUMBING CONTRACTOR SHALL THE EXISTING SINK BACK INTO NEW WATER PIPING SYSTEM. FIELD VERIFY EXIST LOCATION.
- ⑦ PLUMBING CONTRACTOR SHALL PROVIDE WSB 12" AFF W/COVER PLATE.
- ⑧ TRENCH WASH-DOWNS SHEET SHALL BE CONNECTED TO AN INTERMITTENT TIME-CLOCK WITH REMOTE OVERRIDES AT EACH RUN ROOM. SEE ARCHITECTURAL SHEET A502 FOR MORE INFORMATION.

BDA

**MAIN LEVEL
FLOOR PLAN - WATER - EAST**

REV.#	DATE	COMMENTS
REVISION:	-	-
REVISION:	-	-
REVISION:	-	-

REVIEWS	
INITIALS	
	BDA DSGN. REV.
	BDA TECH REV.

P202

8 OF 11



KEYPLAN

1 MAIN LEVEL
FLOOR PLAN - WATER - EAST
SCALE: 1/4" = 1'-0"

M MICHAEL SCHON, PE
100 WEST 17TH STREET
MONROE, NY 28112
P: 704.995.7020

ALL WORK SHALL BE IN ACCORDANCE WITH THE LATEST EDITIONS OF THE NATIONAL ELECTRICAL CODE (NEC) AND THE NATIONAL FIRE PROTECTION ASSOCIATION (NFPA) 70B. THE CONTRACTOR SHALL BE RESPONSIBLE FOR OBTAINING ALL NECESSARY PERMITS AND INSURANCE. THE CONTRACTOR SHALL BE RESPONSIBLE FOR OBTAINING ALL NECESSARY PERMITS AND INSURANCE. THE CONTRACTOR SHALL BE RESPONSIBLE FOR OBTAINING ALL NECESSARY PERMITS AND INSURANCE.

BDA



ROCKLAND GREEN CENTER FOR ANIMAL
RESCUE AND EDUCATIONAL
SERVICES, INC.
R.G. C.A.R.E.S. ANIMAL SHELTER
427 BEACH RD. LOCATED IN THE TOWN OF
HARVERSTRAW, NY 10993

UPPER LEVEL
FLOOR PLAN - WATER - WEST

REVIEWS	
INITIALS	BDA DSGN. REV.
	BDA TECH REV.

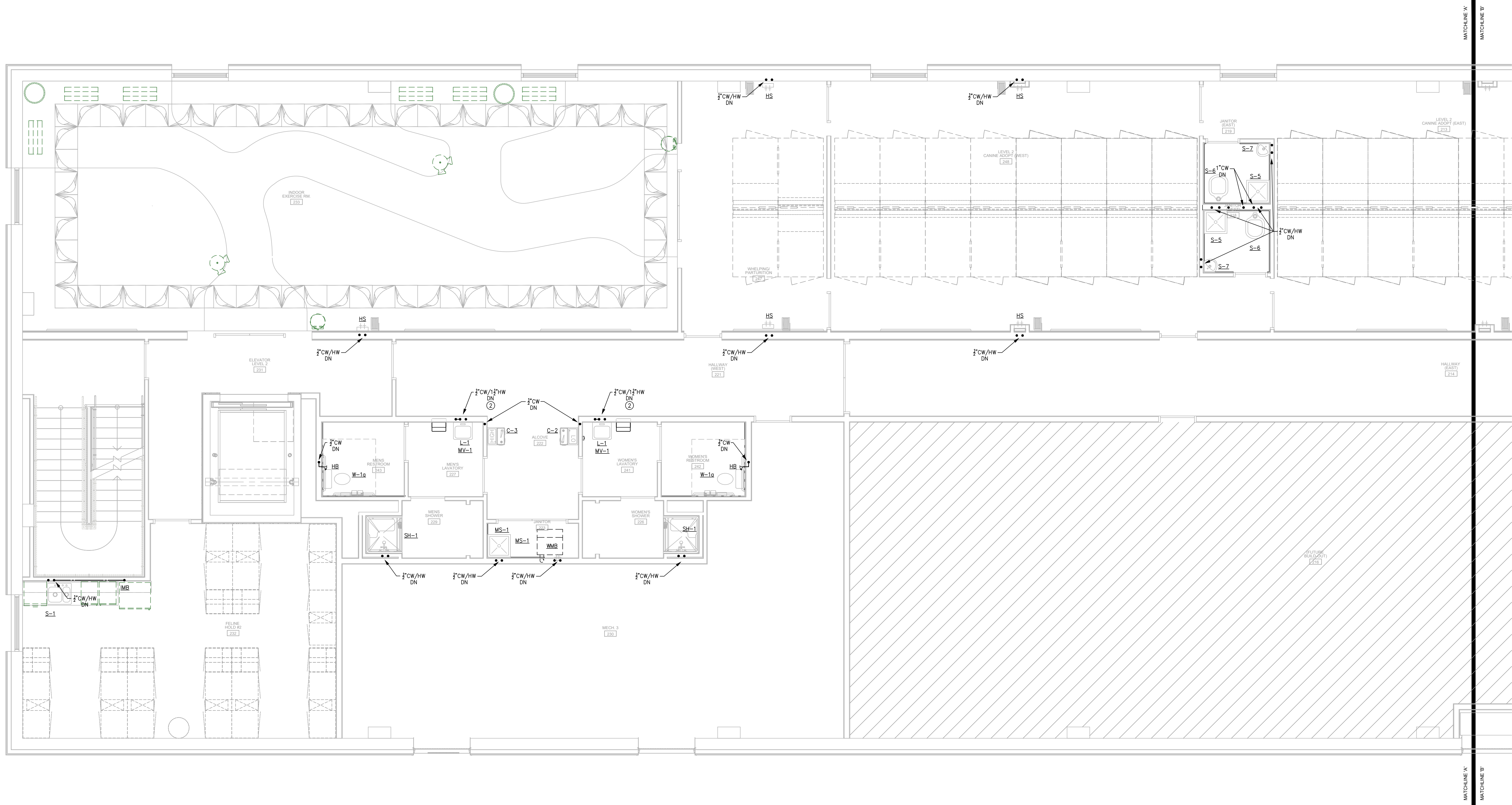
RGAS
PROJECT NO.: 23077
DRAWN: WRB
DATE: 07/08/2024

P203

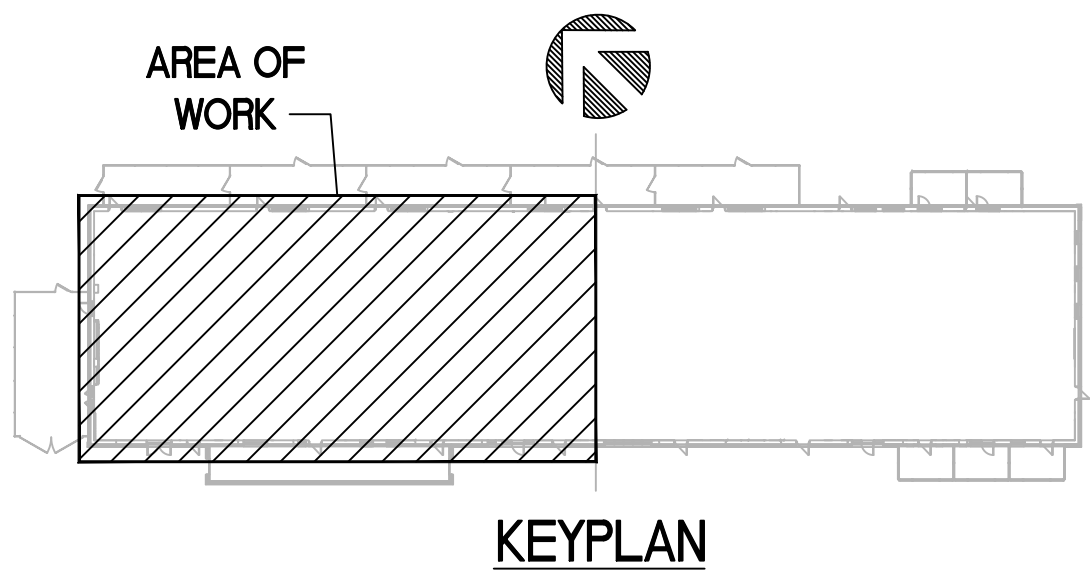
9 OF 11

NOTES THIS SHEET

- SEE SHEETS P001-002 FOR SCHEDULES, DETAILS AND SPECIFICATIONS.
- ROUTE HW UP TO SECOND FLOOR TO 12" AFF. ROUTE TO LAVATORY HW SUPPLIES, PROVIDE TAP AND TURN BACK DN TO FIRST FLOOR CEILING.



1 UPPER LEVEL
FLOOR PLAN - WATER - WEST
SCALE: 1/4" = 1'-0"



KEYPLAN

NOTES THIS SHEET

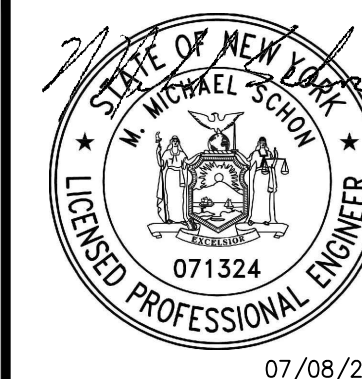
- ① SEE SHEETS P001-002 FOR SCHEDULES, DETAILS AND SPECIFICATIONS.
- ② PLUMBING CONTRACTOR SHALL PROVIDE WSB 12" AFF. PROVIDE COVER PLATE.

M MICHAEL SCHON, PE

1000 WEST 12TH AVENUE
MONROE, NC 28112
P: 704.995.7020

PROFESSIONAL SEAL
MICHAEL SCHON, PE
PLUMBING
071524
07/08/24

BDA



ROCKLAND GREEN CENTER FOR ANIMAL
RESCUE AND EDUCATIONAL
SERVICES, INC.
R.G. C.A.R.E.S. ANIMAL SHELTER
427 BEACH RD. LOCATED IN THE TOWN OF
HARVERSTRAW, NY 10993

UPPER LEVEL
FLOOR PLAN - WATER - EAST

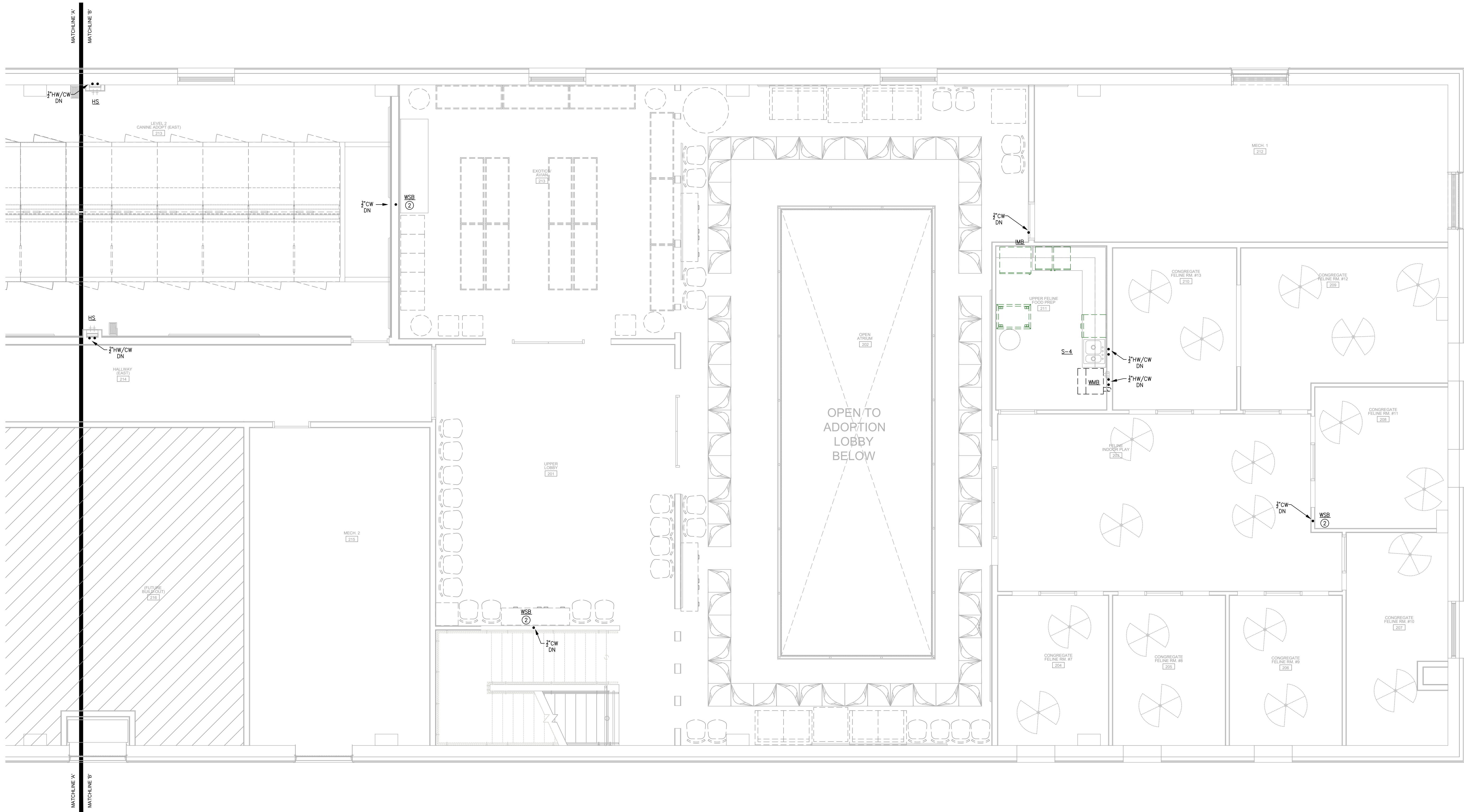
REV. #	DATE	COMMENTS
REVISION:	-	-
REVISION:	-	-
REVISION:	-	-

INITIALS	REVIEWS
BDA DSGN. REV.	
BDA TECH REV.	

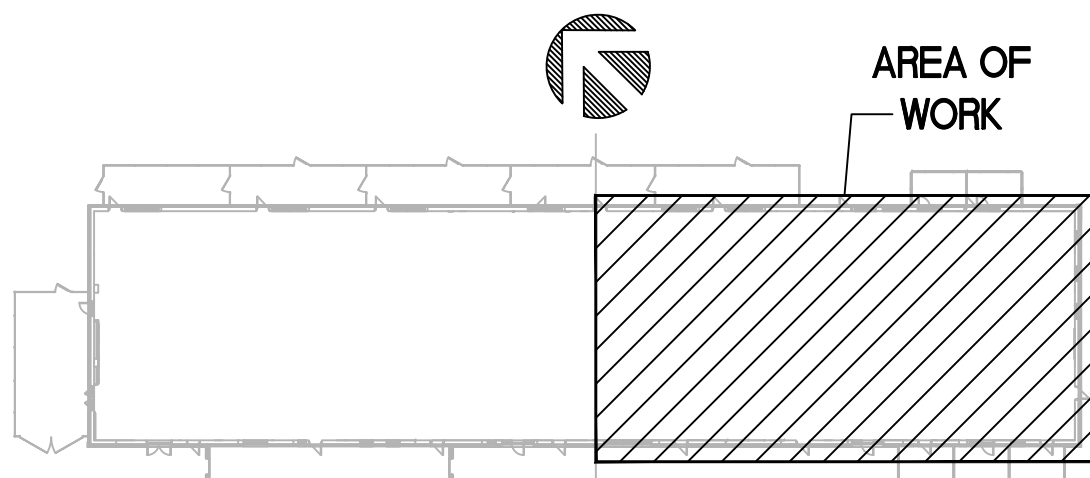
RGAS
PROJECT NO.: 23077
DRAWN: WRB
DATE: 07/08/2024

P204

10 OF 11

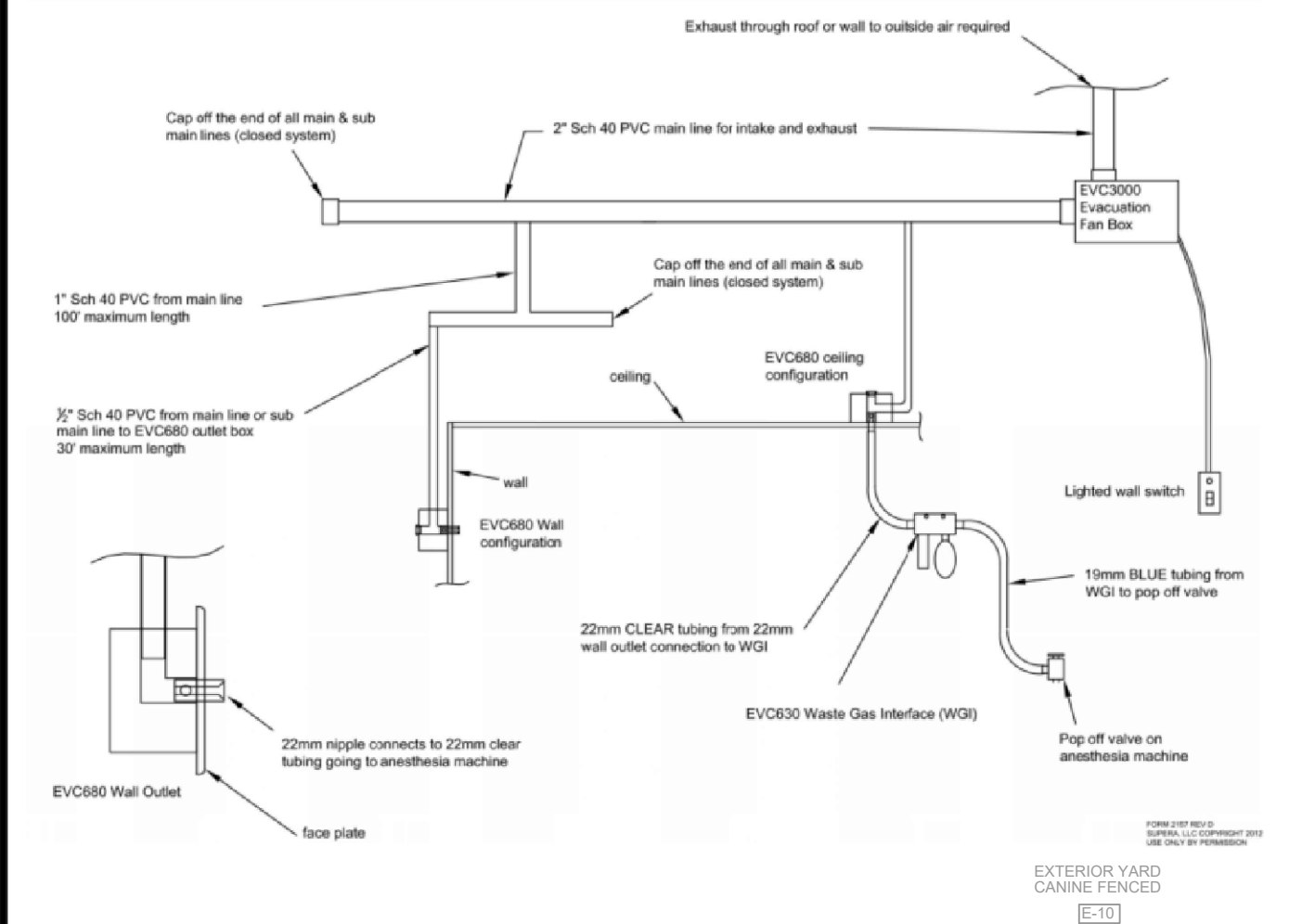


1 UPPER LEVEL
FLOOR PLAN - WATER - EAST
SCALE: 1/4" = 1'-0"



KEYPLAN

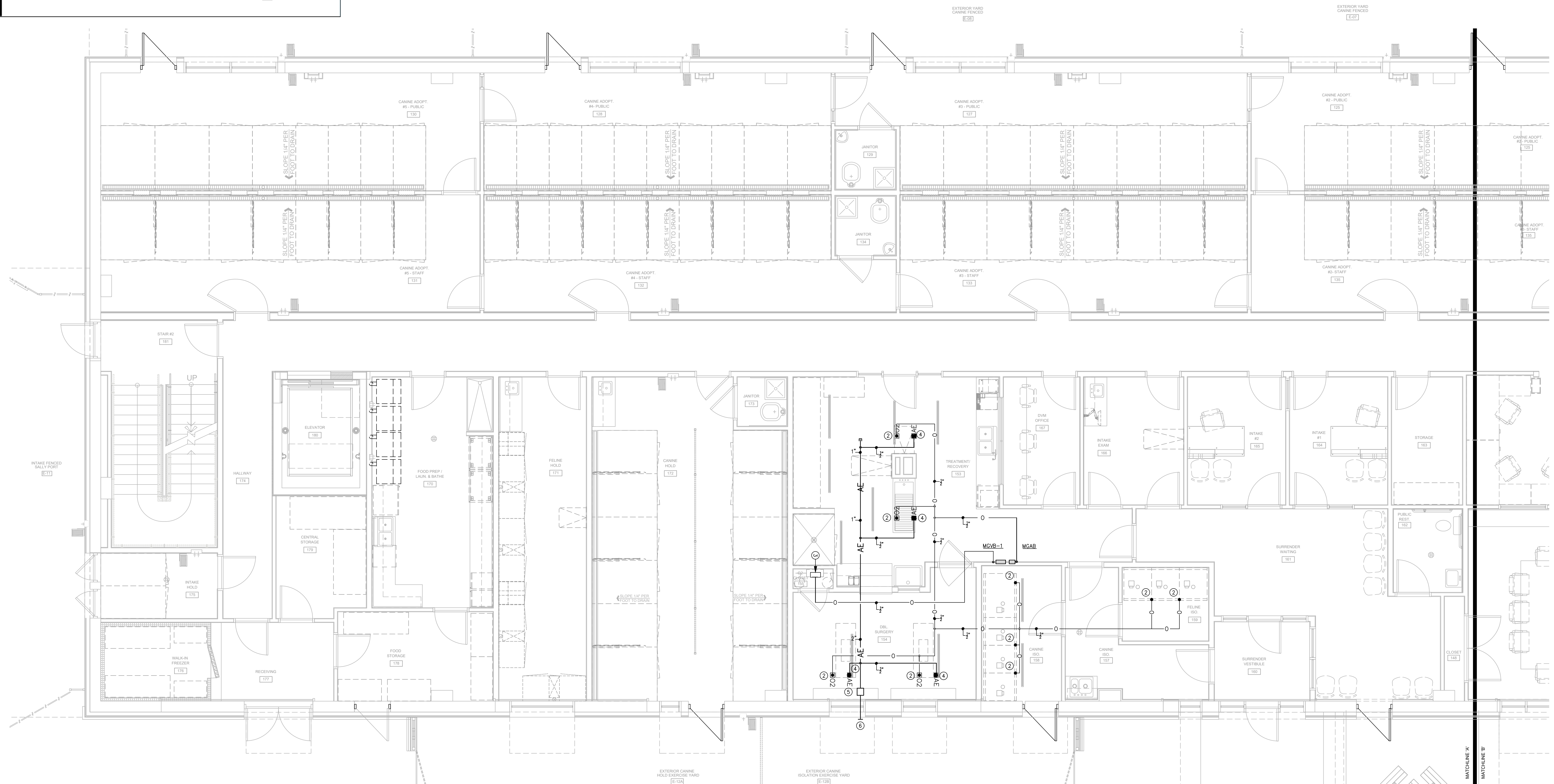
2" Sch 40 PVC main line and exhaust - 200' maximum length
1" Sch 40 PVC sub main - 100' maximum length
1/2" Sch 40 PVC line to outlet - 30' maximum length



1. SEE SHEETS P001-002 FOR SCHEDULES, DETAILS AND SPECIFICATIONS.
2. ALL EQUIPMENT, PIPING, INSTALLATION, AND TESTING OF THE MEDICAL GAS SHALL COMPLY WITH NFPA 99 (2004 EDITION), EXCEPT AS NOTED, AND ALL STATE AND LOCAL CODES AND/OR ORDINANCES.
3. ALL MEDICAL GAS STORAGE SYSTEMS SHOWN ON THESE PLANS SHALL BE INSTALLED PER NATIONAL FIRE PROTECTION ASSOCIATION NFPA 55 STANDARD 2004 EDITION.
4. MEDICAL GAS MAIN LINE VALVE, PRESSURE GAUGE AND PRESSURE SWITCH SHALL BE LOCATED IMMEDIATELY DOWN STREAM OF THE MAIN SOURCE VALVES PER NFPA 99.
5. ALL MEDICAL GAS MAIN LINES SHALL BE SIZED PER NATIONAL FIRE PROTECTION ASSOCIATION 99 STANDARD 2004 EDITION.
6. CONTRACTOR SHALL BE RESPONSIBLE FOR FIELD VERIFICATION AND COORDINATING ACTUAL LOCATION WITH ALL OTHER TRADES.
7. RECOMMENDED INSTALLATION HEIGHT OF WALL MOUNTED COMPONENTS IS 60" FROM THE CENTER LINE OF THE COMPONENT TO THE FINISHED FLOOR.
8. PIPE DROPS TO MEDICAL GAS SHALL BE 3" NOMINAL FOR PRESSURE GASES.
9. ALL WALL PENETRATIONS SHALL BE FIRE STOPPED AS REQUIRED TO PRESERVE THE FIRE RESISTANCE RATING OF THE PENETRATED ASSEMBLY.

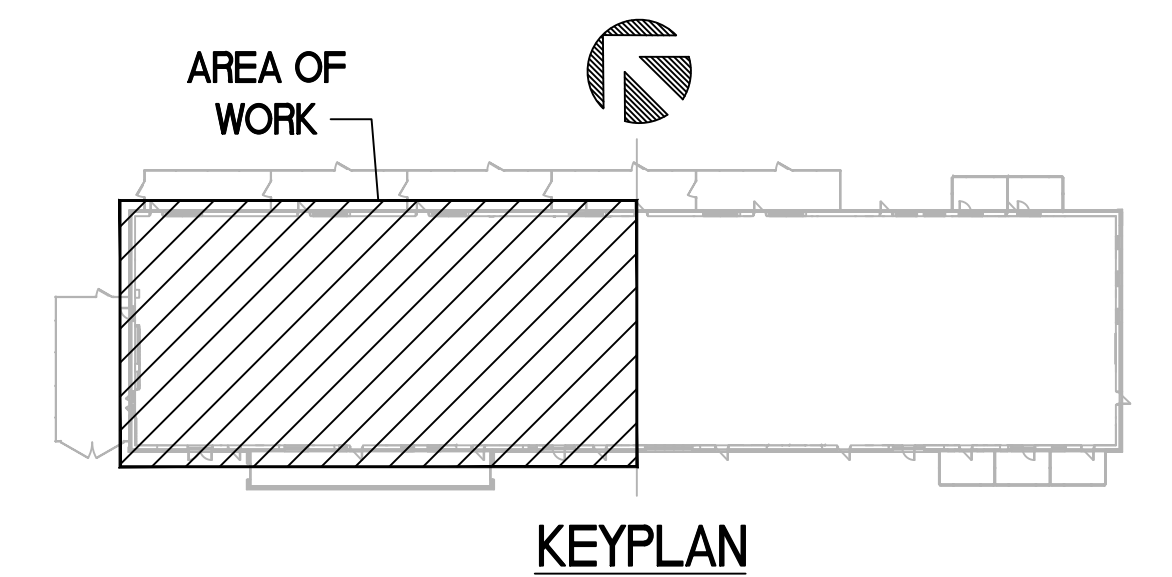
1. MEDICAL GAS PIPE SIZING AND LAYOUT IS DIAGRAMMATIC ONLY. LAYOUT AND EQUIPMENT SCHEDULE IS PROVIDED FOR BUDGET PURPOSES. PLUMBING CONTRACTOR SHALL BE RESPONSIBLE FOR FIELD VERIFICATION OF MED GAS SYSTEM LAYOUT, PIPE SIZING AND VALVES/ALARMS WITH MEDICAL GAS EQUIPMENT SUPPLIER.

- ① SEE SHEETS P001-002 FOR SCHEDULES, DETAILS AND SPECIFICATIONS.
- ② OWNER PROVIDED 1/2" CEILING MOUNTED 02 OUTLET PER NFPA STANDARDS. COORDINATE EXISTING LOCATION WITH ARCHITECTURAL AND OWNERS EQUIPMENT.
- ③ OXYGEN GAS MANIFOLD, 100 PSI 3/4" OXYGEN INLET MANIFOLD PER NFPA 99 PROVIDE ALL REQUIRED VALVES AND CONTROLS PER NFPA 99. ROUTE OXYGEN LINE ABOVE CEILING PER NFPA 99.
- ④ OWNER PROVIDED 1/2" ANESTHESIA EVACUATION DROP WITH SUPERA EV6800 CEILING/HANG CONFIGURATION. SEE SUPERA MASTER GAS EVACUATION DIAGRAM FOR SHEET COORDINATION WITH SUPERA AND EV6800 LOCATIONS WITH OWNER/ARCHITECT PRIOR TO ROUGH-IN.
- ⑤ OWNER PROVIDED SCAVENGER UNIT, SIAE, MOUNTED ABOVE CEILING. COORDINATE LOCATION WITH OWNER/ARCHITECT PRIOR TO ROUGH-IN. SCAVENGER UNIT SHALL BE CONTROLLED THROUGH A LIGHTED WALL SWITCH. THE WALL SWITCH IS TO BE PROVIDED BY THE OWNER.
- ⑥ 2" SCHEDULE 40 PVC EXHAUST FROM SIAE SCAVENGER UNIT. PROVIDE 2" PVP BIRD MESH COVER WITH STAINLESS STEEL SCREEN GATE. TO SWITCH #1008 495 020-55; CONTRACTOR SHALL FIELD PLAN TO MATCH ADJACENT EXISTING EXHAUST. COORDINATE EXISTING LOCATION WITH OWNER/ARCHITECT PRIOR TO ROUGH-IN.



MAIN LEVEL
FLOOR PLAN - MED GAS - WEST

SCALE: 1/4" = 1'-0"



1001 LANCASTER AVENUE
MONROE, NC 28112
P: 704.995.7020

DATA



**R.C.A.R.E.S. ANIMAL SHELTER
427 BEACH RD. LOCATED IN THE TOWN OF
HARVERSTRAW, NY 10993**

MAIN LEVEL	
FLOOR PLAN - MED GAS - WEST	
#	DATE COMMENTS

REVISION:	-
REVISION:	-
REVISION:	-
REVISION:	-

	REVIEWS
DETAILS	BDA DSGN. REV.
	BDA TECH REV.

RGAS

PROJECT NO.: 23077

DRAWN: WRB

DATE: 07/08/2024

P301

11 OF 11