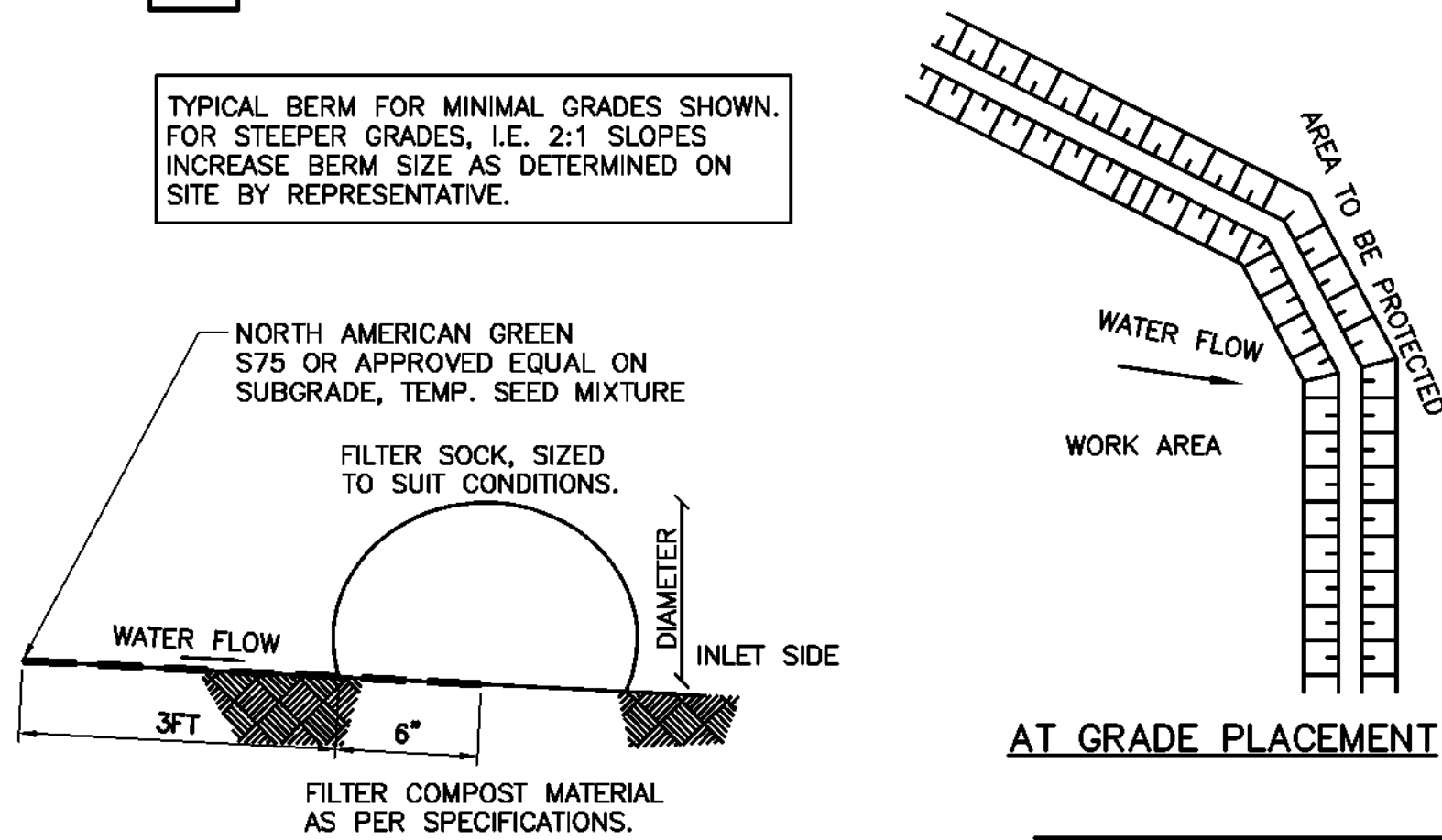


NOTE:  
EROSION CONTROL BLANKETS TO BE INSTALLED ON SLOPES 3:1 OR GREATER (TYP.)

## 1 EROSION CONTROL BANK STABILIZATION DETAIL

SCALE: N.T.S.

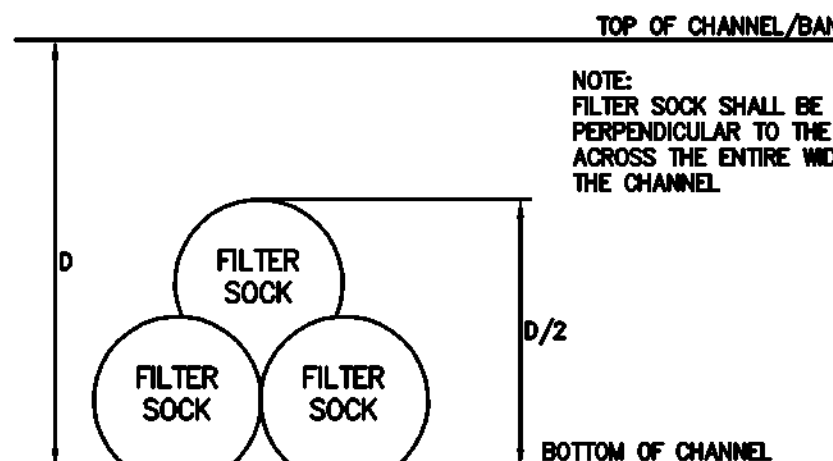
TYPICAL BERM FOR MINIMAL GRADES SHOWN.  
FOR STEEPER GRADES, I.E. 2:1 SLOPES  
INCREASE BERM SIZE AS DETERMINED ON  
SITE BY REPRESENTATIVE.



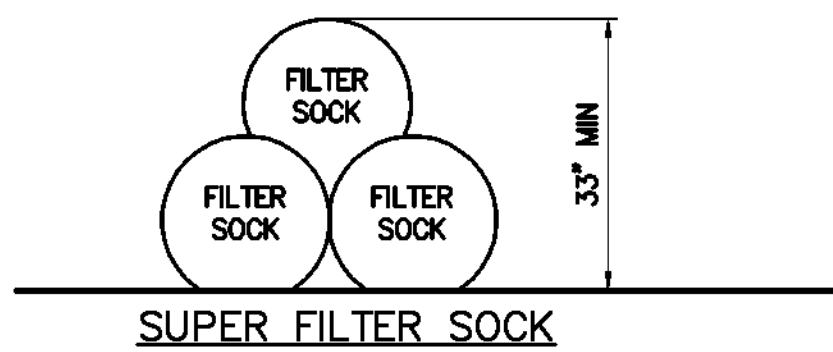
## 2 TEMPORARY STOCK PILE

NOT TO SCALE

- NOTES:
1. ALL MATERIAL TO MEET MANUFACTURER SPECIFICATIONS.
  2. ALL FILTER SOCKS SHALL BE 12" DIAMETER UNLESS INDICATED OTHERWISE.
  3. THE CONTRACTOR SHALL MAINTAIN THE COMPOST FILTER BERM IN A FUNCTIONAL CONDITION AT ALL TIMES AND IT SHALL BE ROUTINELY INSPECTED.
  4. WHERE THE BERM REQUIRES REPAIR, IT WILL BE ROUTINELY REPAIRED.
  5. THE CONTRACTOR SHALL REMOVE SEDIMENTS COLLECTED AT THE BASE OF THE BERM WHEN THEY REACH 1/3 OF THE EXPOSED HEIGHT OF THE BERM, OR AS DIRECTED BY THE REPRESENTATIVE.
  6. THE COMPOST FILTER BERM WILL BE DISPERSED ON SITE WHEN NO LONGER REQUIRED, AS DETERMINED BY THE REPRESENTATIVE.
  7. INSTALL PERPENDICULAR TO FLOW.



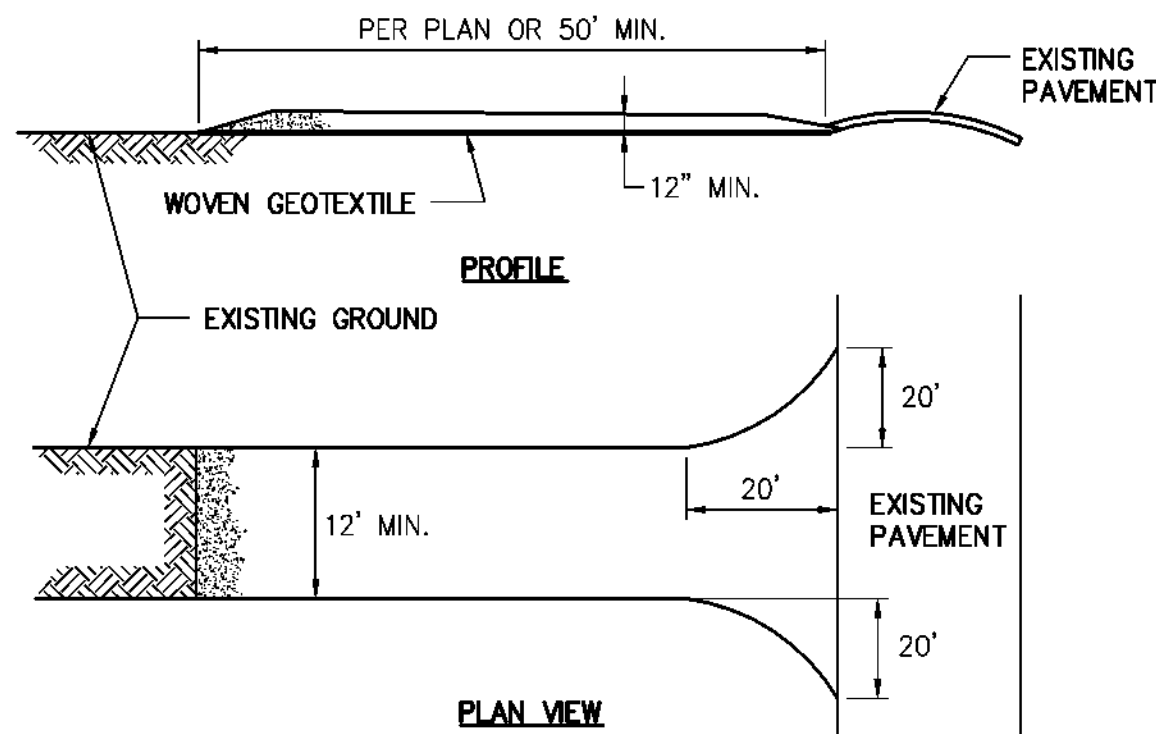
## CHANNEL PLACEMENT



## SUPER FILTER SOCK

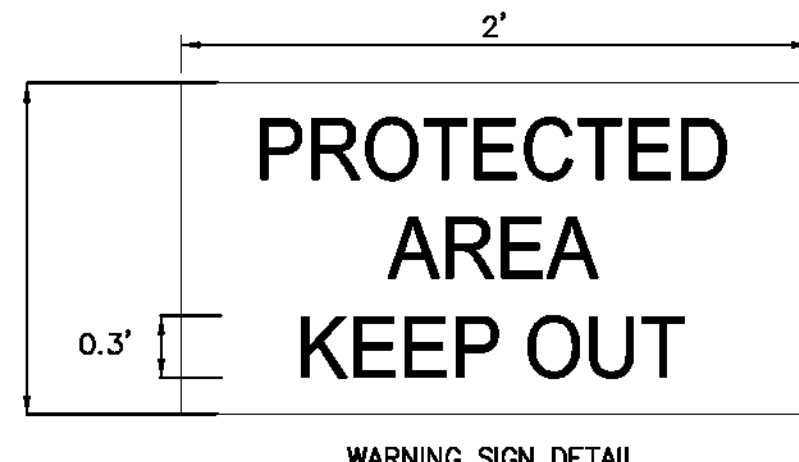
## 4 COMPOST FILTER SOCK DETAIL

NOT TO SCALE



## 5 WETLAND PROTECTION FENCE

SCALE: N.T.S.



## 6 PROTECTED AREA FENCE

NOT TO SCALE

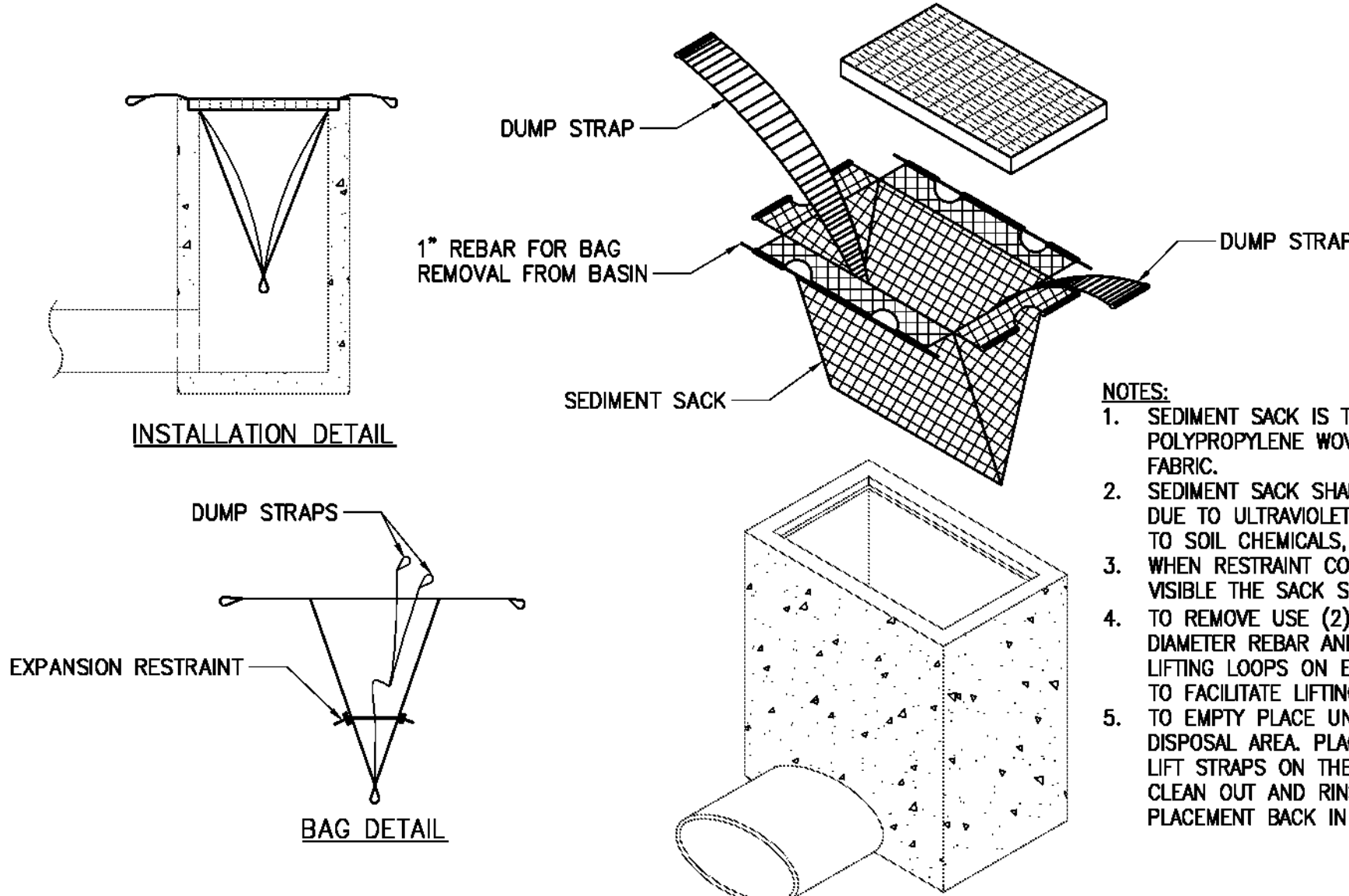
- NOTES:
1. STONE SIZE—USE AASHTO M43 SIZE 3 COARSE AGGREGATE, OR RECLAIMED OR RECYCLED CONCRETE EQUIVALENT.
  2. LENGTH — NOT LESS THAN 50 FEET (EXCEPT ON A SINGLE RESIDENCE LOT WHERE A 30 FOOT MINIMUM LENGTH WOULD APPLY).
  3. THICKNESS — NOT LESS THAN 12".
  4. WIDTH — TWELVE (12) FOOT MINIMUM, BUT NOT LESS THAN THE FULL WIDTH AT POINTS WHERE INGRESS OR EGRESS OCCURS. TWENTY-FOUR (24) FOOT IF SINGLE ACCESS TO SITE.
  5. WOVEN GEOTEXTILE FABRIC WILL BE PLACED OVER THE ENTIRE AREA PRIOR TO PLACING OF STONE.
  6. EXISTING ROAD SIDE DRAINAGE SHALL BE MAINTAINED.
  7. SURFACE WATER — ALL SURFACE WATER FLOWING OR DIVERTED TOWARD CONSTRUCTION ENTRANCES SHALL BE PIPED BENEATH THE ENTRANCE. IF PIPING IS IMPRACTICAL, A MOUNTABLE BERM WITH 5:1 SLOPES WILL BE PERMITTED.
  8. MAINTENANCE—THE ACCESS SHALL BE MAINTAINED IN A CONDITION WHICH WILL PREVENT TRACKING OR FLOWING OF SEDIMENT ONTO PUBLIC RIGHTS-OF-WAY. THIS MAY REQUIRE PERIODIC TOP DRESSING WITH ADDITIONAL STONE AS CONDITIONS DEMAND AND REPAIR AND/OR CLEANOUT OF ANY MEASURES USED TO TRAP SEDIMENT. ALL SEDIMENT OR STONE SPILLED, DROPPED, WASHED, OR TRACKED ONTO PUBLIC RIGHTS-OF-WAY MUST BE REMOVED IMMEDIATELY.
  9. WHEN WASHING IS REQUIRED, IT SHALL BE DONE ON A AREA STABILIZED WITH STONE AND WHICH DRAINS INTO AN APPROVED SEDIMENT TRAPPING DEVICE.
  10. PERIODIC INSPECTION AND NEEDED MAINTENANCE SHALL BE PROVIDED AFTER EACH RAIN.

## 7 STABILIZED CONSTRUCTION ACCESS

SCALE: N.T.S.

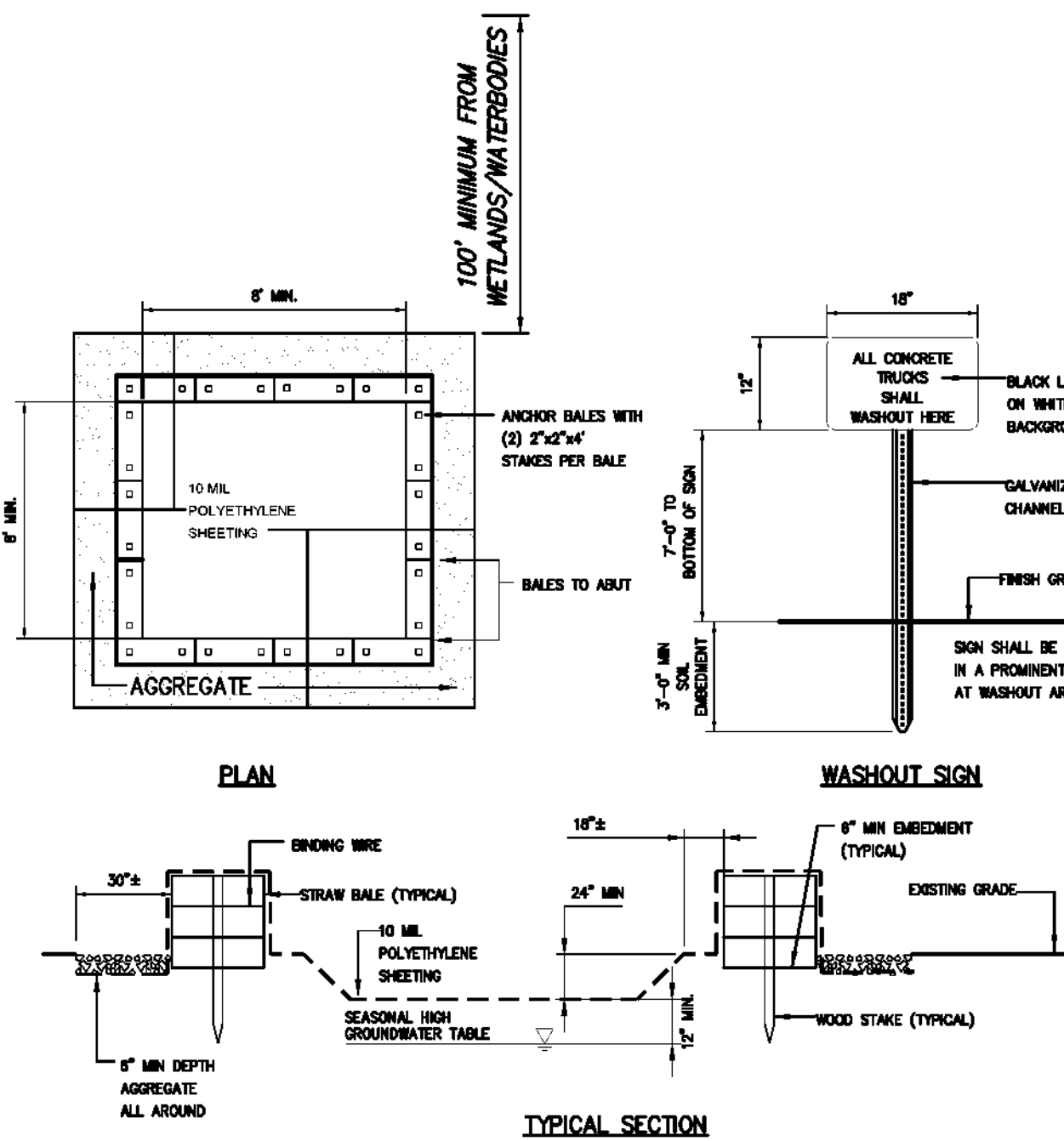
## 8 INLET PROTECTION DETAIL

SCALE: N.T.S.



## 9 REINFORCED TURF MATTING INSTALLATION DETAIL

NOT TO SCALE



## MAINTENANCE NOTES:

1. ALL CONCRETE WASHOUT FACILITIES SHALL BE INSPECTED DAILY. DAMAGED OR LEAKING FACILITIES SHALL BE DEACTIVATED AND REPAIRED OR REPLACED IMMEDIATELY. EXCESS RAINWATER THAT HAS ACCUMULATED OVER HARDENED CONCRETE SHALL BE PUMPED TO A STABILIZED AREA SUCH AS A GRASS FILTER STRIP.
2. ACCUMULATED HARDENED MATERIAL SHALL BE REMOVED WHEN 75% OF THE STORAGE CAPACITY OF THE STRUCTURE IS FILLED. ANY EXCESS WASH WATER SHALL BE PUMPED INTO A CONTAINMENT VESSEL AND PROPERLY DISPOSED OF OFF-SITE.
3. DISPOSAL OF THE HARDENED MATERIAL SHALL BE OFF-SITE IN A CONSTRUCTION/DEMOLITION LANDFILL.
4. THE PLASTIC LINER SHALL BE REPLACED WITH EACH CLEANING OF THE WASHOUT FACILITY.
5. INSPECT THE PROJECT SITE FREQUENTLY TO ENSURE THAT NO CONCRETE DISCHARGES ARE TAKING PLACE IN NON-DESIGNATED AREAS.
6. LOCATION(S) TO BE DETERMINED IN THE FIELD BY THE OWNER'S REPRESENTATIVE.
7. CONCRETE WASHOUTS SHALL NOT BE LOCATED WITHIN 200' OF ANY KNOWN WELL.

**New York State Parks, Recreation and Historic Preservation**

Governor Kathy Hochul Commissioner Pro Tempore Randy Simons

IT IS A VIOLATION OF STATE EDUCATION LAW FOR ANY PERSON, UNLESS UNDER THE DIRECTION OF A LICENSED ARCHITECT/ENGINEER TO ALTER THIS DOCUMENT IN ANYWAY. ALTERNATIONS MUST HAVE THE SEAL, APPROVED ALONG WITH A DESCRIPTION OF THE ALTERATIONS, DATE AND ARCHITECT/ENGINEER'S SIGNATURE. COPYRIGHT © 2015

**Architectural Consultant**  
BEYER BLINDER BELLE ARCHITECTS & PLANNERS  
100 BROADWAY, 20TH FLOOR, NEW YORK, NY 10071

**Structural Consultant**  
THORNTON TOMASETTI  
100 BROADWAY, 15TH FLOOR, NEW YORK, NY 10071

**MEP / FP / IT Consultant**  
LFC LANDMARKS FACILITIES GROUP  
100 EAST AVENUE, NORMAN, CT 06060

**Civil Consultant**  
CNA CONSULTING, INC.  
7 MINERS CIRCLE, PO BOX 9208, ALBANY, NY 12209

**Landscape Consultant**  
RHODES HARRIS LANDSCAPE ARCHITECTURE  
541 WEST 36TH STREET, SUITE 101, NEW YORK, NY 10019

**Lighting Consultant**  
HLB LIGHTING  
30 EAST 32ND STREET, 11TH FLOOR, NEW YORK, NY 10019

**Signage Consultant**  
LVCK - A BEYER BLINDER BELLE STUDIO  
100 BROADWAY, 20TH FLOOR, NEW YORK, NY 10071

## NYS OPRHP Taconic Region

9 Old Post Rd, PO Box 308  
Staatsburg, NY 12580  
(845) 889 - 4100

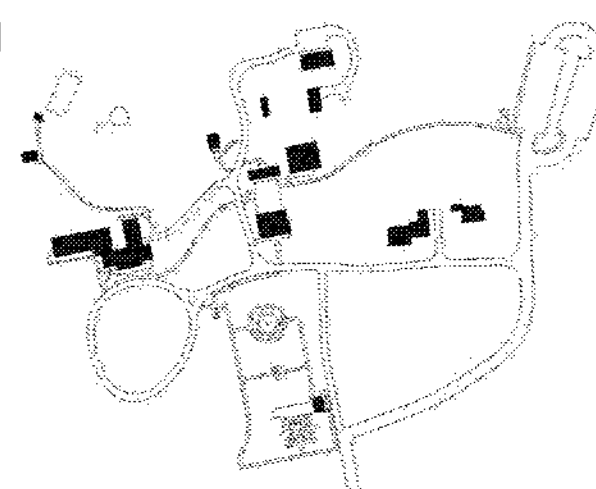
Regional Director: Linda Cooper  
Capital District Manager: Garrett Jobson

**Project Title:**  
John Jay Homestead Site And Building Enhancements

## Project Location:

400 Jay Street  
Katonah NY 10536

## Key Plan



## REVISIONS

Rev No	Description	Date

Drawn By: HB	Seal and Signature
Design By: JJE	
Checked By: JJE	
Approved By: SKB	
DATE 07/10/2024	
Sheet Title DETAILS (2 OF 5)	Drawing Number C-601

DETAILS (2 OF 5)

C-601

Project Number:  
TA-JJ-2023-001

Sheet:  
46 of 327