

TRANE Water Source Heat Pump (WSHP) INDOOR UNIT SCHEDULE																										
Building	Area	Type	Tag Reference	Model	Type	Nominal Cooling Capacity (BTU/h)	Nominal Sensible Capacity (BTU/h)	Nominal Heating Capacity (BTU/h)	Aux. Electric Heat	Cooling Design EAT DB/WB (°F)	Cooling Design LAT DB/WB (°F)	Heating Design EAT / LAT (°F)	Flow (GPM)	WPD (Ft Hd)	EWTD (C / H)	LWT (C / H)	Airflow (cfm)	ESP (IN WG)	EER	COP	Voltage / Phase	Aux. Electric Heat	Weight (Lbs)	Electrical MCA/MFS	Notes / Options	
Carriage Barn	VISITOR CENTER	WATER TO AIR HEAT PUMP	WTAHP-C-1	DXHG060B	Indoor Horizontal	53,200	47,800	63,700	Electric Coil	80.6 / 66.2	58.5 / 57.5	68 / 99.5	9.8	5.70	86/99	68/57	1,900	0.5	17.6	6	208/230/1	10 kW	434	22.0 / 35	1-4	
	ENTRANCE	WATER TO AIR HEAT PUMP	WTAHP-C-2	DXHG036B	Indoor Horizontal	34,800	30,030	39,000	Electric Coil	80.6 / 66.2	57.3 / 56.6	68 / 100	7.4	4.50	86/97	68/59	1,140	0.5	17.3	5.9	208/230/1	5 kW	313	13.0 / 20	1-4	
Notes & Options: 1 VFD 2 VIF Return and Supply Arrangement 3 Provide Electric Aux. Heat 4 Provide with Duct Smoke Detectors.																										

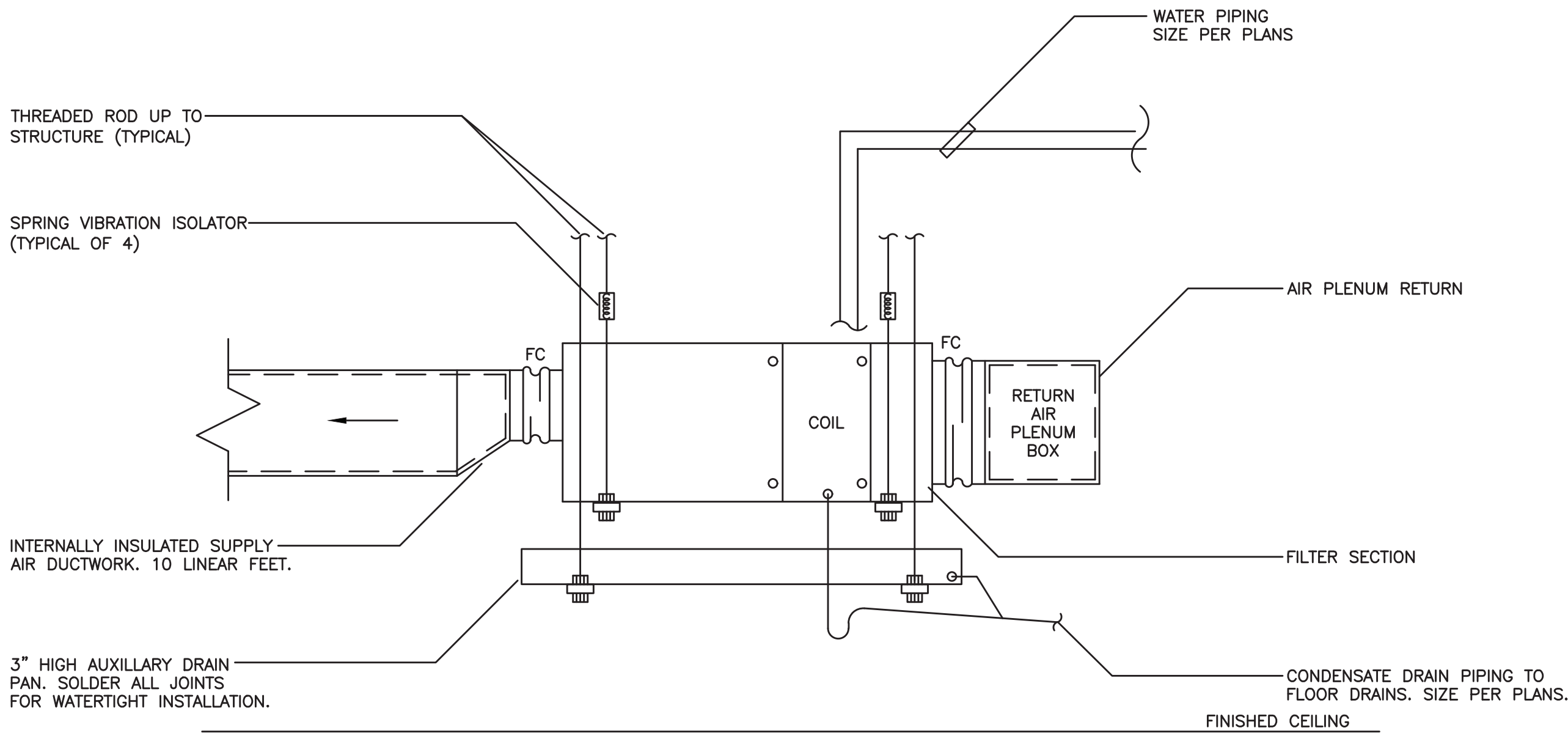
AIR DISTRIBUTION DEVICE SCHEDULE (MANUFACTURED BY TITUS)												
MARK	MODEL	TYPE	INSTALLATION METHOD	NECK SIZE (L" X W" or DIAMETER")	FACE SIZE (L" X W")	AIRFLOW CFM	FRAME TYPE	FINISH	MATERIAL	ACCESSORIES		REMARKS
										DAMPER	OTHER	
CD-1	OMNI	SQUARE FACE	CEILING BOARD	Note 1	Note 1	Note 1	1	Note 2, White	STEEL	OBD		INSULATED BLANKET
CG-1	35ORS	RETURN GRILLE	SIDE WALL SURFACE	Note 1	Note 1	Note 1	Note 2	Note 2, White	STEEL	OBD		
TG-1	35ORS	TRANSFER GRILLE	CEILING / WALL BOARD	Note 1	Note 1	Note 1	Note 2	Note 2, White	STEEL	OBD		
HRG-1	35ORS	RETURN GRILLE	SIDE WALL SURFACE	Note 1	Note 1	Note 1	Note 2	Note 2, 3	STEEL			
EG-1	25RL	EXHAUST GRILLE	SIDE WALL SURFACE	Note 1	8 X 8	Note 1	1	Note 2, White	STEEL			
HSR-1	300RL	SUPPLY GRILLE	SIDE WALL SURFACE	Note 1	Note 1	Note 1	1	Note 2, 3	STEEL	OBD		
ACCESSORIES: PFS-PLASTER FRAME DMPR- DAMPER DL-DRUM LOUVER EXT-LUNAB AIR EXTRACTOR OBD-OPPOSED BLADE DAMPER COMAD- CABLE OPERABLE MANUAL ADJUSTABLE DAMPER												
NOTES: 1. SEE PLANS 2. SHALL BE SELECT AND APPROVE BY ARCHITECT 3. COLOR SELECTED BY ARCHITECT 4. VIF DIMMENSIONS AND FEASIBILITY OF REPLACEMENT EXSIT. DIFFUSER												

1

M-310

ALTERNATE 1 - MECHANICAL SCHEDULES - CARRIAGE BARN

N.T.S.

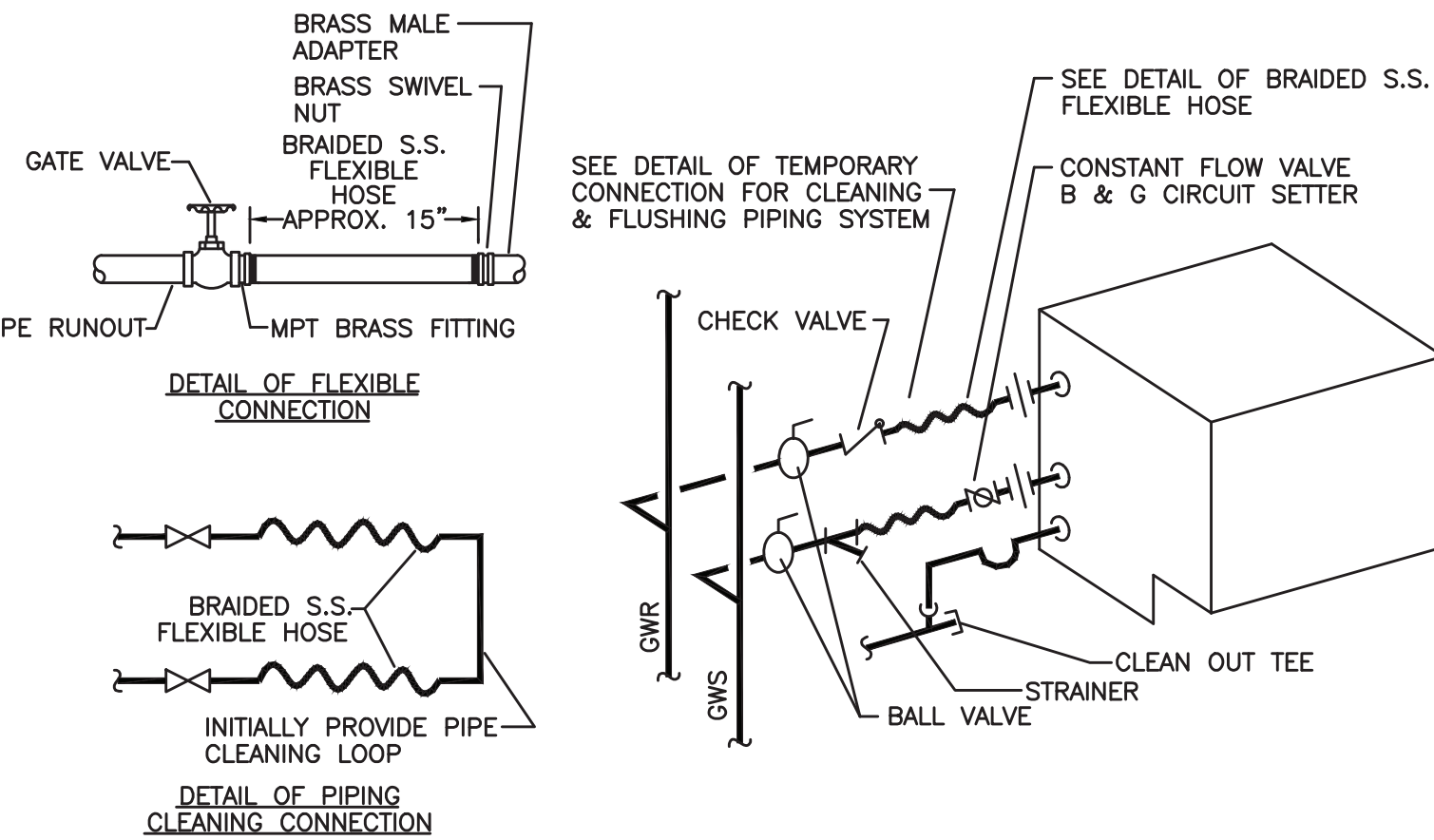


2

M-310

ALTERNATE 1 - HORIZONTAL HEAT PUMP AIR HANDLER DETAIL

N.T.S.



3

M-310

ALTERNATE 1 - TYPICAL HEAT PUMP WATER CONNECTION DETAIL

N.T.S.

FAN SCHEDULE

MARK	SERVICE - DESTINATION	MANUFACTURER	MODEL	FAN RPM	CFM	E.S.P. (IN W.G.)	POWER (HP)	VOLT/PH/HZ	OPER WT (LBS)	Sones	REMARKS
TX-2	TOILET EXHAUST	GREENHECK	SQ-90	1,550	210	0.585	0.1	115/1/60	50	-	1
REMARKS: 1 Provide with factory mounted Disconnect Switch, Speed controller and Backdraft Damper.											

LOUVERS SCHEDULE (MANUFACTURED BY RUSKIN)

MARK	MODEL	TYPE	THICKNESS INCH	SIZE W" x H"	FREE AREA SQ. FT.	AIRFLOW CFM	VELOCITY FPM	APD IN.W.C.	NOTES
L-2	ELF-837	EXH. LOUVER	4	12 x 12	0.34	210	618	0.06	1, 2
NOTES: 1. PROVIDE WITH BIRD SCREEN AND ETENDED SILL. 2. COLOR BY ARCHITECT.									

ELECTRIC HEATER SCHEDULE

MARK		MFR	MODEL	Dim. (In) IN	HEATING CAPACITY (BTU/HR)	INPUT W	AMPS	VOLT/PH/HZ	REMARKS
EBR-3	Electric Baseboard Radiator	Stelpro	AALUX109047	35.3x4.6x2	1,024	300		208/1/60	1
REMARKS: 1 PROVIDE WALL MOUNTED THERMOSTAT.									

4

M-310

BASE BID - MECHANICAL SCHEDULES - CARRIAGE BARN

N.T.S.

Governor Kathy HochulCommissioner Pro Tempore Randy Simons

IT IS A VIOLATION OF STATE EDUCATION LAW FOR ANY PERSON, UNLESS UNDER THE DIRECTION OF A LICENSED ARCHITECT/ENGINEER TO ALTER THIS DOCUMENT IN ANYWAY. ALTERATIONS MUST HAVE THE SEAL AFFIXED ALONG WITH A DESCRIPTION OF THE ALTERATIONS, DATE AND ARCHITECT/ENGINEER'S SIGNATURE.

Architectural Consultant

BEYER BLINDER BELLE ARCHITECTS & PLANNERS  
100 BROADWAY, 20TH FLOOR, NEW YORK, NY 10071

BEYER BLINDER BELLE

Structural Consultant

THORNTON TOMASETTI  
100 BROADWAY, 15TH FLOOR, NEW YORK, NY 10071

Thornton Tomasetti

MEP / FP / IT Consultant

LANDMARKS FACILITIES GROUP  
202 EAST AVENUE, NORWALK, CT 06850

LFG

Civil Consultant

CMA CONSULTING, INC.  
3 WINNERS CIRCLE, PO BOX 8088, ALBANY, NY 12205

CMA

Landscape Consultant

RHODESIDE HANWELL LANDSCAPE ARCHITECTURE  
341 WEST 36TH STREET, SUITE 1201, NEW YORK, NY 10018

RHI

Lighting Consultant

HLB LIGHTING  
36 EAST 32ND STREET, 11TH FLOOR, NEW YORK, NY 10016

HLB

Signage Consultant

LVCK - A BEYER BLINDER BELLE STUDIO  
100 BROADWAY, 20TH FLOOR, NEW YORK, NY 10071

LVCK

NYS OPRHP Taconic Region

9 Old Post Rd, PO Box 308  
Staatsburg, NY 12580  
(845) 889 - 4100

Regional Director: Linda Cooper  
Capital District Manager: Garrett Jobson

Project Title:  
John Jay Homestead Site And Building Enhancements

Project Location:  
400 Jay Street  
Katonah NY 10536

Key Plan

REVISIONS

Rev No	Description	Date

Drawn By:  
LFG

Design By:  
LFG

Checked By:  
LFG

Approved By:  
LFG

DATE  
07/10/24

Sheet Title  
\* CARRIAGE BARN  
MECHANICAL  
SCHEDULES & DETAILS

Seal and Signature

Drawing Number  
  
M-310

Project Number:  
TA-JJ-2023-001

Sheet:  
259 of 327