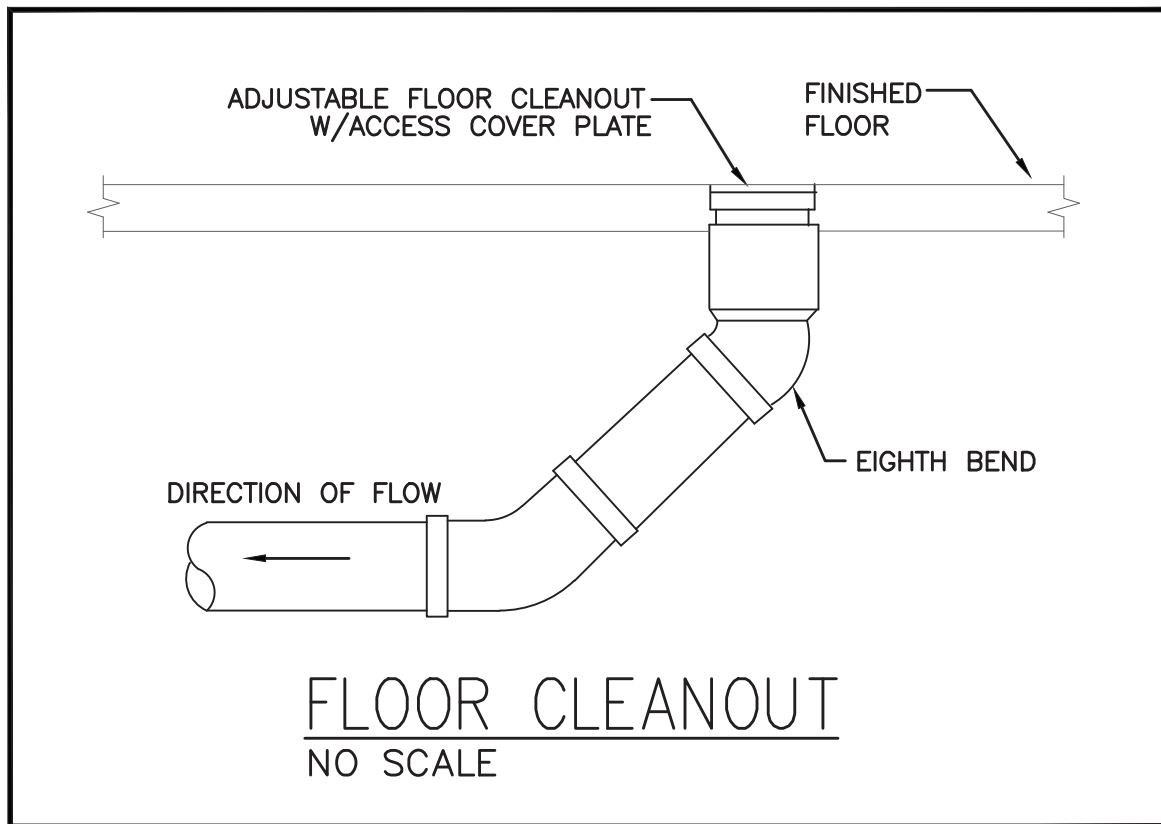
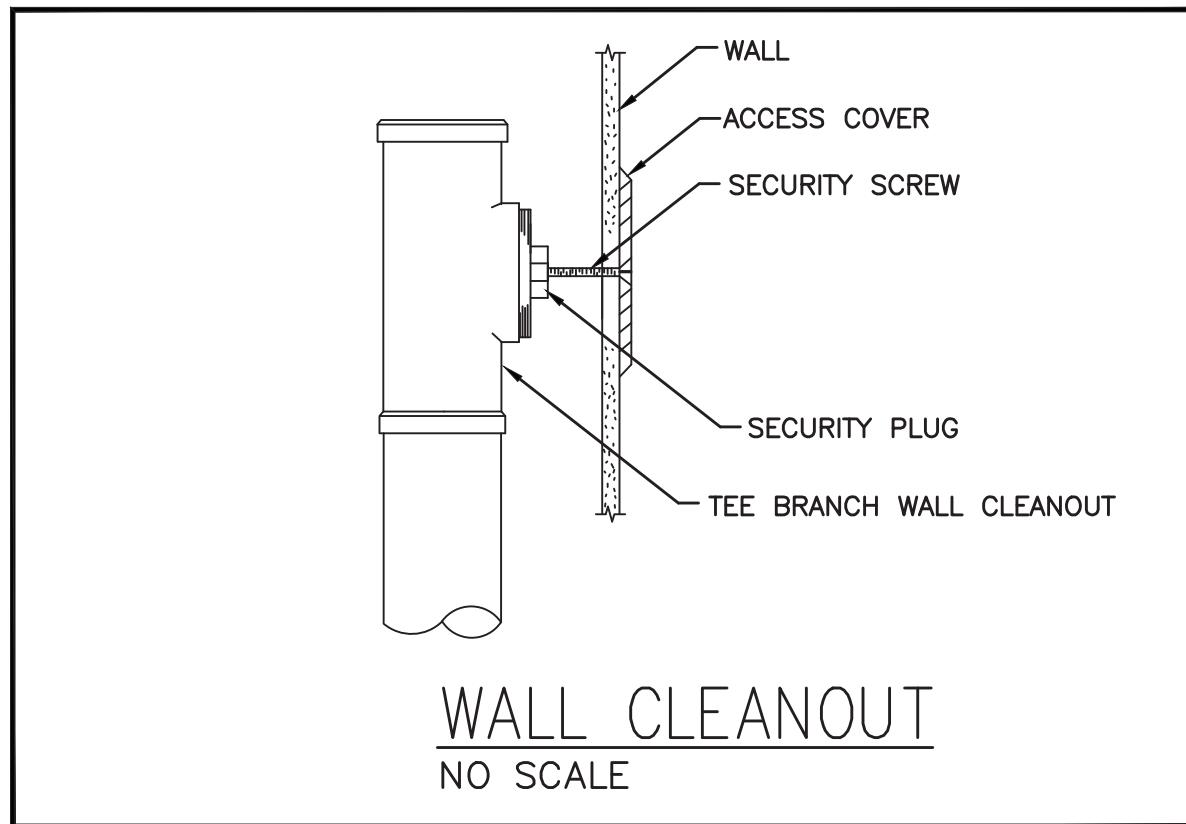
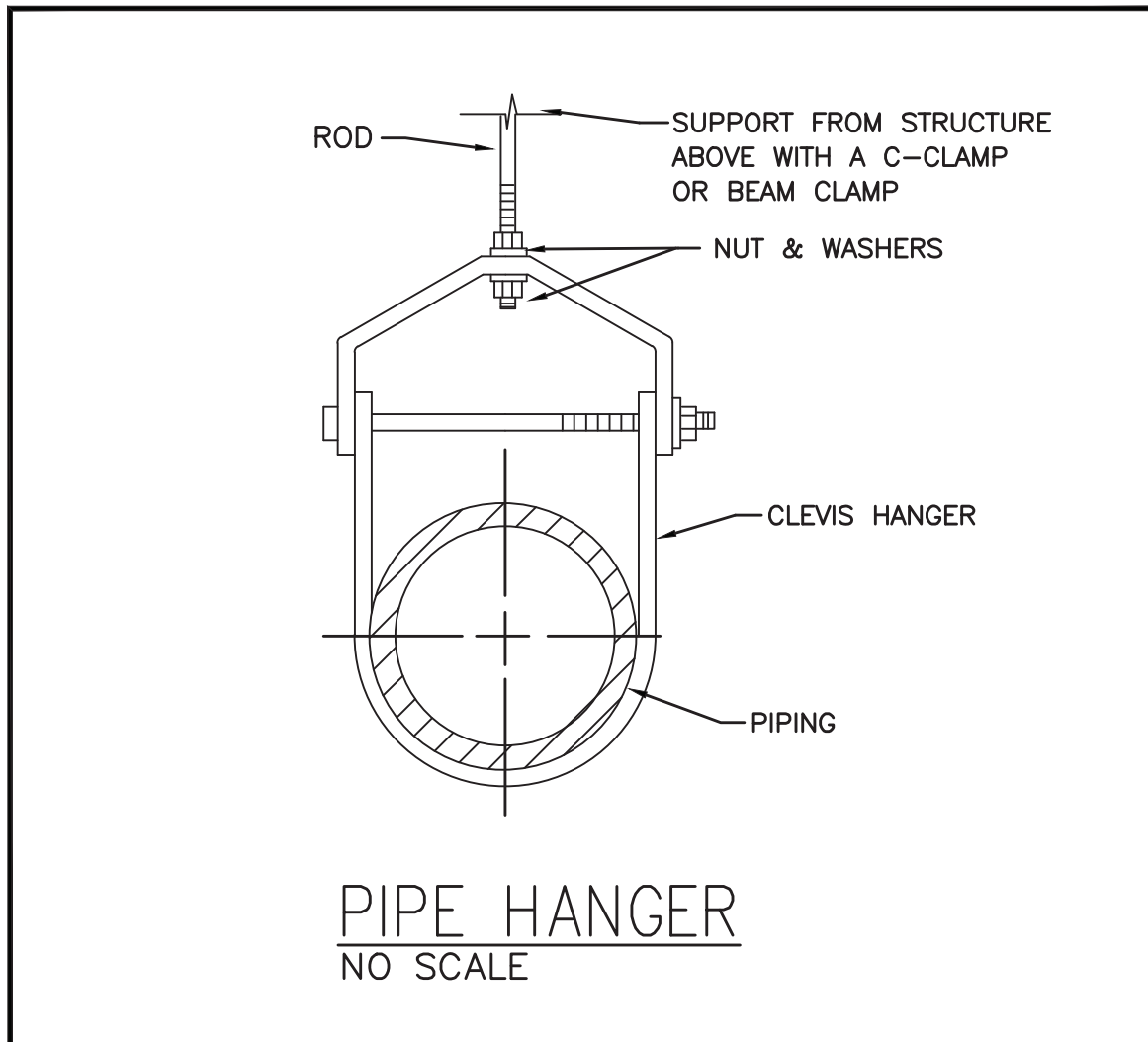
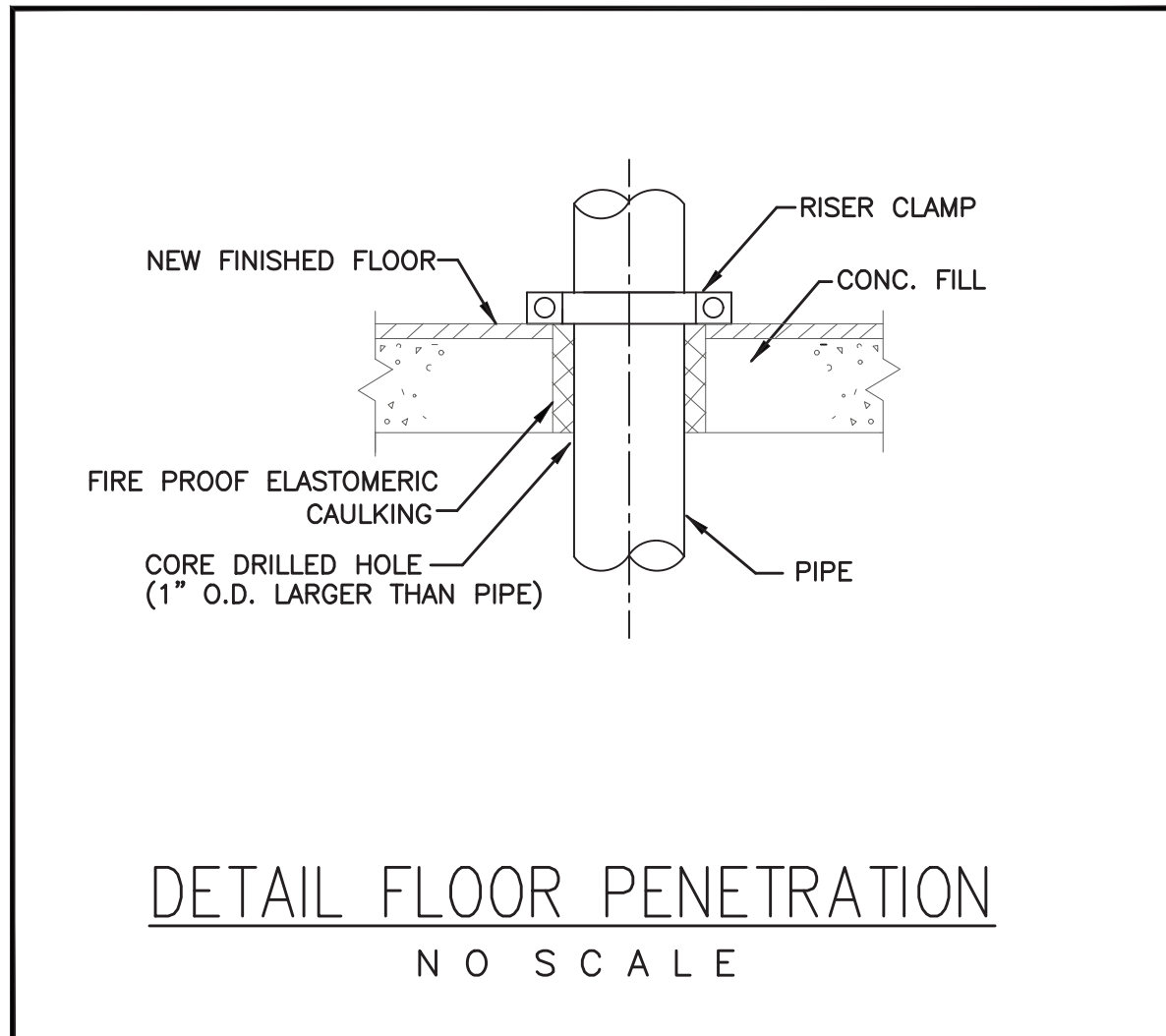
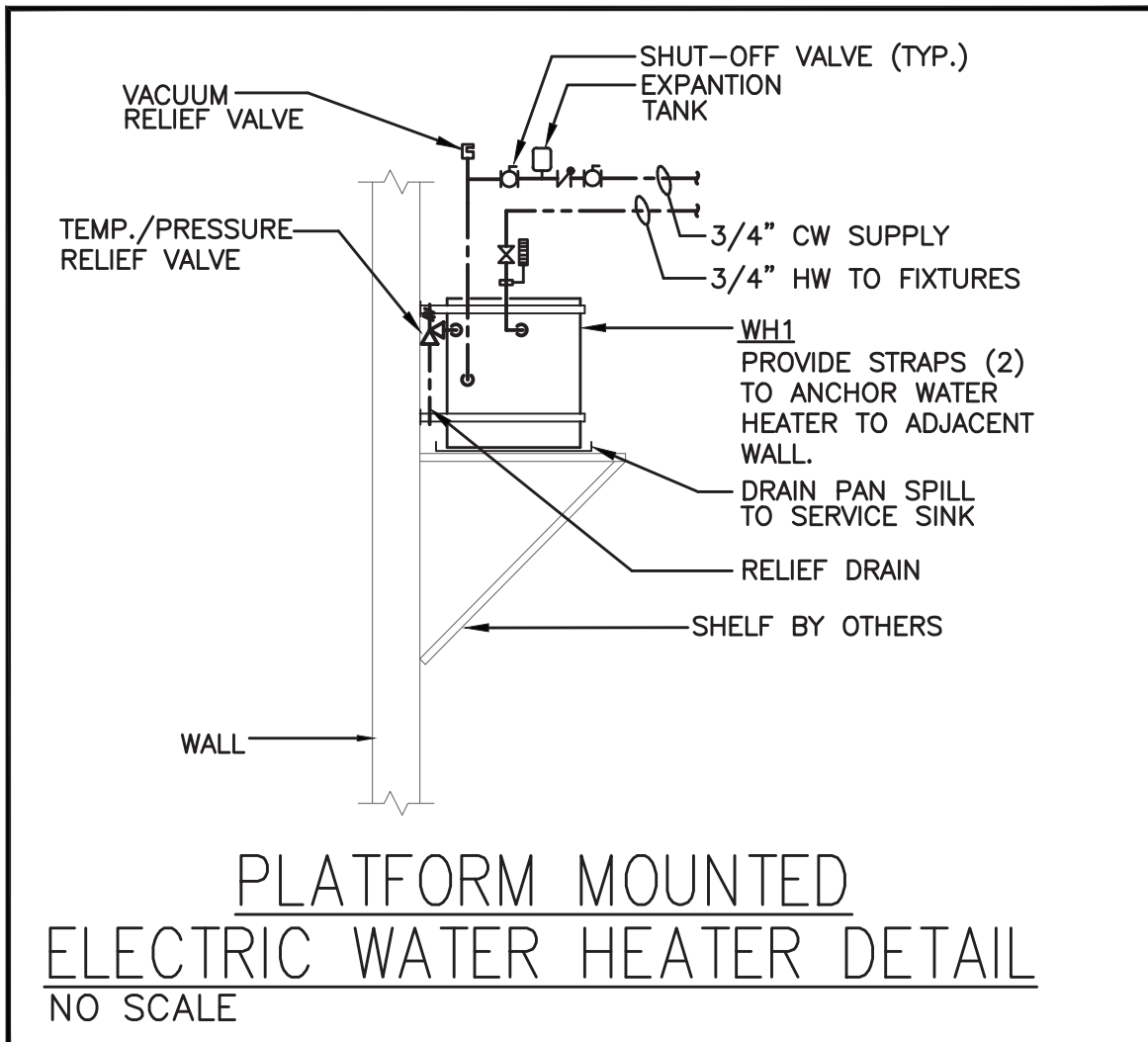


9 8 7 6 5 4 3 2 1



PLUMBING SYMBOL LIST	
NOTE: NOT ALL SYMBOLS ARE USED	
SYMBOL	DESCRIPTION
---	EXISTING PIPING TO REMAIN
-X-X-X-X-	EXISTING PIPING TO BE REMOVED
---	WASTE PIPE ABOVE FLOOR/SLAB (W)
---	WASTE PIPE BELOW FLOOR/SLAB (W)
---	SANITARY PIPE ABOVE FLOOR/SLAB (S)
---	SANITARY PIPE BELOW FLOOR/SLAB (S)
---	VENT PIPE (V)
---	EXISTING COLD WATER PIPING
---	EXISTING HOT WATER PIPING
---	EXISTING HOT WATER RETURN PIPING
---	COLD WATER PIPING (CW)
---	HOT WATER PIPING (HW)
---	HOT WATER RETURN PIPING (HWR)
---	COLD WATER PIPING UNDER GROUND(CW)
TP	TRAP PRIMER PIPING
---	DIRECTION OF FLOW
---	PIPE RISE OR UP THRU SLAB
---	PIPE DROP OR DOWN THRU SLAB
---	BOTTOM OF PIPE TAKE-OFF CONNECTION
---	TOP OF PIPE TAKE-OFF CONNECTION
OC	P-TRAP
E	CAP PIPE OUTLET
---	CLEANOUT (CO)
U	UNION
V	VALVE IN RISE / VERTICAL
---	POINT OF NEW CONNECTION
---	FLOOR DRAIN
---	BALL VALVE
---	COLD WATER SUPPLY SHUT OFF VALVE
---	GAS SHUT OFF VALVE

PLUMBING ABBREVIATION LIST	
SYMBOL	DESCRIPTION
AFF	ABOVE FINISHED FLOOR
ADA	HANDICAPPED ACCESSIBLE
CO	CLEANOUT
CV	CHECK VALVE
CW	COLD WATER
CLG	CEILING
CONN	CONNECT
CONT	CONTINUATION
DN	DOWN (PENETRATES FLOOR SLAB)
DR	DRAIN
DPCO	DECK PLATE CLEANOUT
DWG	DRAWING
EX	EXISTING
EL	ELEVATION
EW2	ELECTRIC WATER COOLER -- HANDICAPPED ACCESSIBLE
F1 or F2	FLOOR DRAIN
FL	FLOOR
HWR	HOT WATER RECIRCULATION
IW	INDIRECT WASTE
L1 or L2	LAVATORY
LV	LAVATORIES
MIN	MINIMUM
MTD	MOUNTED
NTS	NOT TO SCALE
S	SANITARY
SH2	SHOWER
K2	SINK
TYP	TYPICAL
UP	UP (PENETRATES FLOOR SLAB)
U1 or U2	URINAL
V or VNT	VENT
VF	VERIFY IN FIELD
W	WASTE
W1, W2, or W3	WATER CLOSET
WCO	WALL CLEANOUT
WH	WATER HEATER

PLUMBING FIXTURE SCHEDULE

NOTE:
REFER TO ARCHITECTURAL DRAWINGS FOR PLUMBING
FIXTURE SCHEDULE.

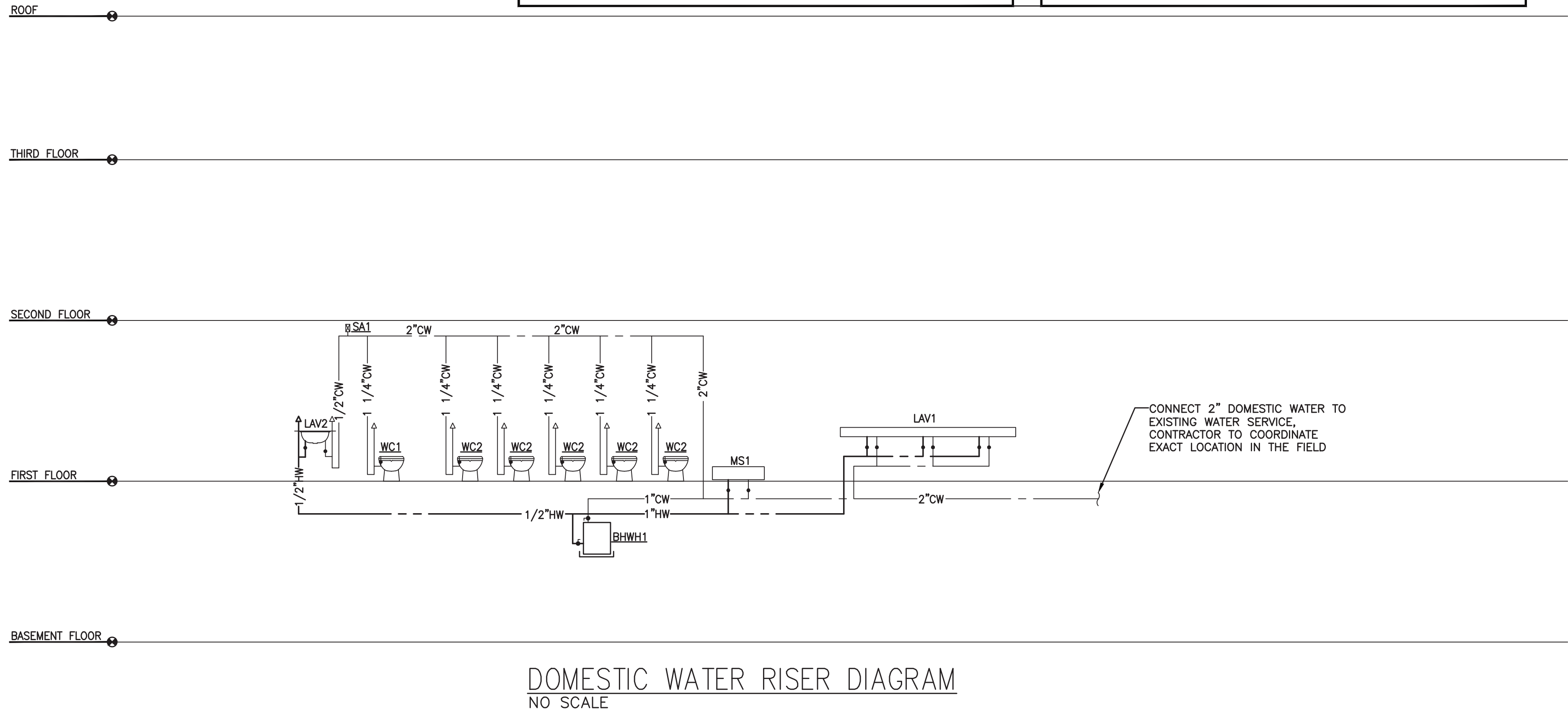
PLUMBING EQUIPMENT SCHEDULE

FCQ	FLOOR CLEANOUT: ZURN MODEL #Z-1400-ZN-T, CAST IRON W/POLISHED BRONZE TOP ACCESS COVER. SIZE AS INDICATED ON DRAWINGS. INSTALL PER MANUFACTURERS RECOMMENDATIONS.
WCO	WALL CLEANOUT: ZURN MODEL #Z-1446-VP, CAST IRON W/POLISHED BRONZE TOP VANDAL PROOF ACCESS COVER. SIZE AS INDICATED ON DRAWINGS. INSTALL PER MANUFACTURERS RECOMMENDATIONS.
FD1	FLOOR DRAIN JAY B. SMITH MODEL #2005A, W/TYPE 'A' ROUND STRAINER, 3" OUTLET, CAST IRON BODY, W/FLASHING COLLAR, WITH PROSET TRAP GUARD MODEL #TG3H
SA1	SHOCK ABSORBER: SMITH "HYDROTROL" 5020, 1" NPT, ALL STAINLESS STEEL, INSTALL PER MANUFACTURERS RECOMMENDATIONS. INSTALL WITH GATE VALVE SHUT OFF AND ACCESS DOOR.
SP1	SUMP PUMP: (24"x24"D SUMP PIT) STANCOB MODEL: SE50 SIMPLEX OIL-MINDER SYSTEM SUBMERSIBLE PUMP, NEMA 4x OIL MINDER CONTROL PANEL, OIL PROBE, FLOAT SWITCHES, INDICATOR LIGHTS, WATER ALARMS, 6' CORD, SCREENED INLET, 75 GPM, 2" DISCHARGE, 115V, 8 AMPS, 1/2 HP, 8' HEAD @ 4500 GPH, W/25' PWR. CORD

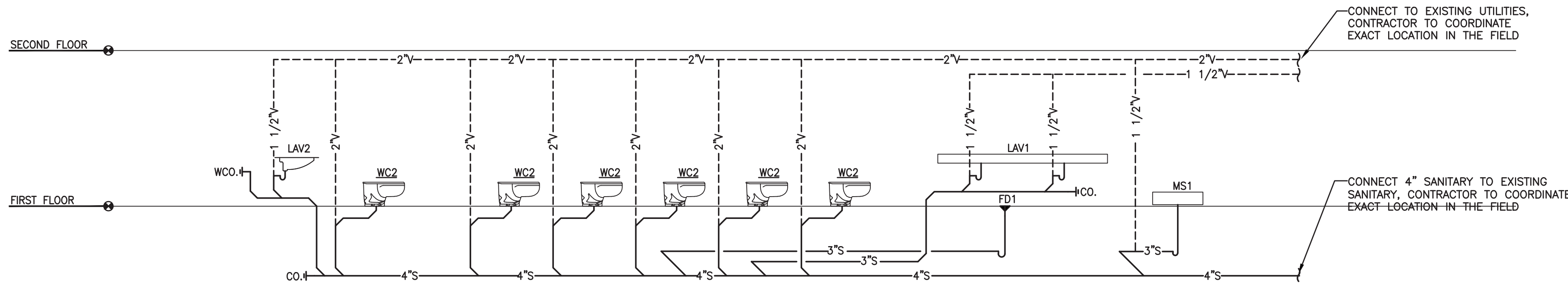
WATER HEATER SCHEDULE

DESIGNATION	NO. REQUIRED	MANUFACTURER AND MODEL NUMBER		STORAGE WATER TEMPERATURE (DEG.F)	VOLUME/HEATER (GALS.)	RECOVERY/HEATER (GPH)	TEMPERATURE RISE (DEG.F)	MAXIMUM WATER FLOW (G.P.M.)	W.W.P. (PSIG.)	TEST PRESSURE (PSIG.)	DIAMETER (INCHES)	LENGTH/HEIGHT (INCHES)	ELECTRIC			REMARKS
													ELECTRIC LOAD (K.W.)	PHASE	VOLTAGE	
BHWH1	1	A.O. SMITH	DEL-50	125°	30	10	80	-	150	160	26	36	6.0	1	208	PLATFORM MOUNTED
BHWH2	1	CHRONOMITE	M-20L	00	00	00	125°	00	150	170	9.5	6.5	4160	1	208	- - -
CBWH2	1	A.O. SMITH	DEL-6	125°	6	8	80	-	150	160	14	15.5	1.5	1	120	PLATFORM MOUNTED

NOTES:
1. REFER TO DRAWINGS, DETAILS, RISERS AND SPECIFICATIONS FOR MORE INFORMATION.



DOMESTIC WATER RISER DIAGRAM
NO SCALE



SANITARY & VENT RISER DIAGRAM
NO SCALE

Governor Kathy Hochul Commissioner Pro Tempore Randy Simons

IT IS A VIOLATION OF STATE EDUCATION LAW FOR ANY PERSON, UNLESS UNDER THE DIRECTION OF A LICENSED ARCHITECT/ENGINEER TO ALTER THIS DOCUMENT IN ANYWAY. ALTERATIONS MUST HAVE THE SEAL AFFIXED ALONG WITH A DESCRIPTION OF THE ALTERATIONS, DATE AND ARCHITECT/ENGINEER'S SIGNATURE.

Architectural Consultant
BEYER BLINDER BELLE ARCHITECTS & PLANNERS
100 BROADWAY, 20TH FLOOR, NEW YORK, NY 10071

Thornton Tomasetti
THORNTON TOMASETTI
100 BROADWAY, 15TH FLOOR, NEW YORK, NY 10071

MEP / FP / IT Consultant
LANDMARKS FACILITIES GROUP
202 EAST AVENUE, NORWALK, CT 06855

Civil Consultant
CMA CONSULTING, INC.
3 WINDING CIRCLE, PO BOX 5008, ALBANY, NY 12205

Landscape Consultant
RHODESIDE HARNWELL LANDSCAPE ARCHITECTURE
341 WEST 36TH STREET, SUITE 1201, NEW YORK, NY 10018

Lighting Consultant
HLB LIGHTING
36 EAST 32ND STREET, 11TH FLOOR, NEW YORK, NY 10016

Signage Consultant
LVCK - A BEYER BLINDER BELLE STUDIO
100 BROADWAY, 20TH FLOOR, NEW YORK, NY 10071

NYS OPRHP Taconic Region
9 Old Post Rd, PO Box 308
Staatsburg, NY 12580
(845) 889 - 4100

Regional Director: Linda Cooper
Capital District Manager: Garrett Jobson

Project Title:
John Jay Homestead Site And Building Enhancements

Project Location:
400 Jay Street
Katonah NY 10536

Key Plan

REVISIONS		
Rev No	Description	Date

Drawn By:
LFG

Design By:
LFG

Checked By:
LFG

Approved By:
LFG

DATE
07/10/24

Sheet Title

PLUMBING SYMBOLS,
SCHEDULES, RISERS
& DETAILS

Project Number:
TA-JJ-2023-001

Seal and Signature

Drawing Number

P-001

Sheet:
306 of 327