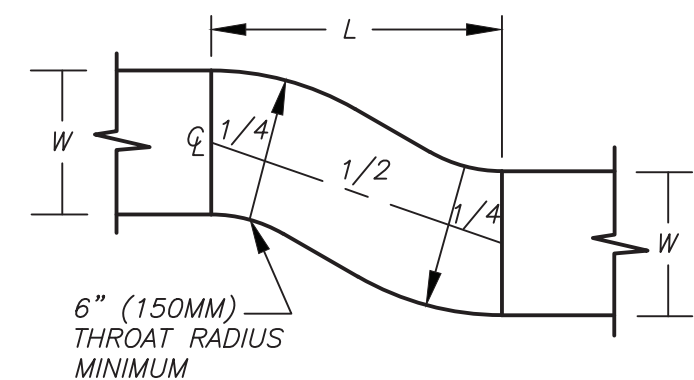
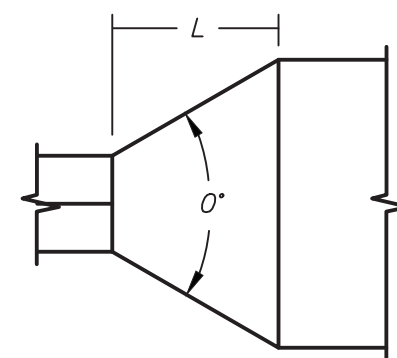


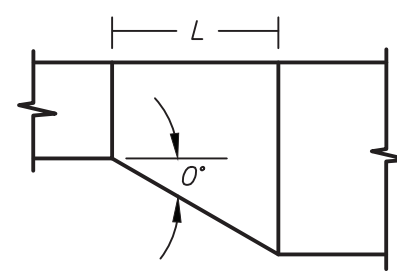
OFFSET TYPE 2
(MITERED)



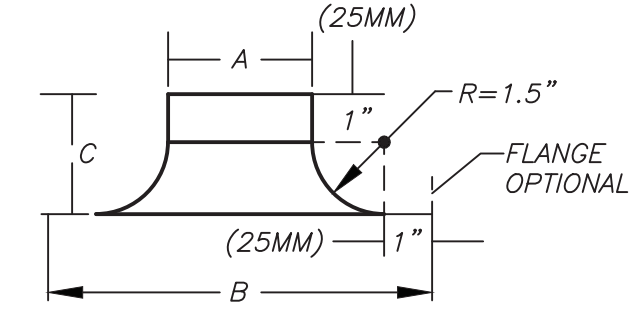
OFFSET TYPE 3
(RADIUSSED
OR OEGEE)



CONCENTRIC TRANSITION
0" MAX. 45° DIVERGING,
60° CONVERGING



CONCENTRIC TRANSITION
0" MAX. 30°
(EXCEPT 45° IS PERMITTED
AT ROUND TO FLAT OVAL)



CONCENTRIC TRANSITION
0" MAX. 30°
(EXCEPT 45° IS PERMITTED
AT ROUND TO FLAT OVAL)

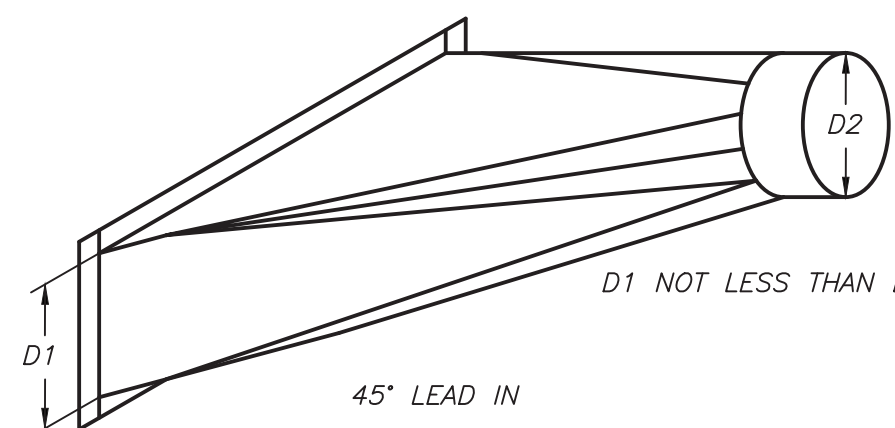


CONCENTRIC TRANSITION
0" MAX. 30°
(EXCEPT 45° IS PERMITTED
AT ROUND TO FLAT OVAL)

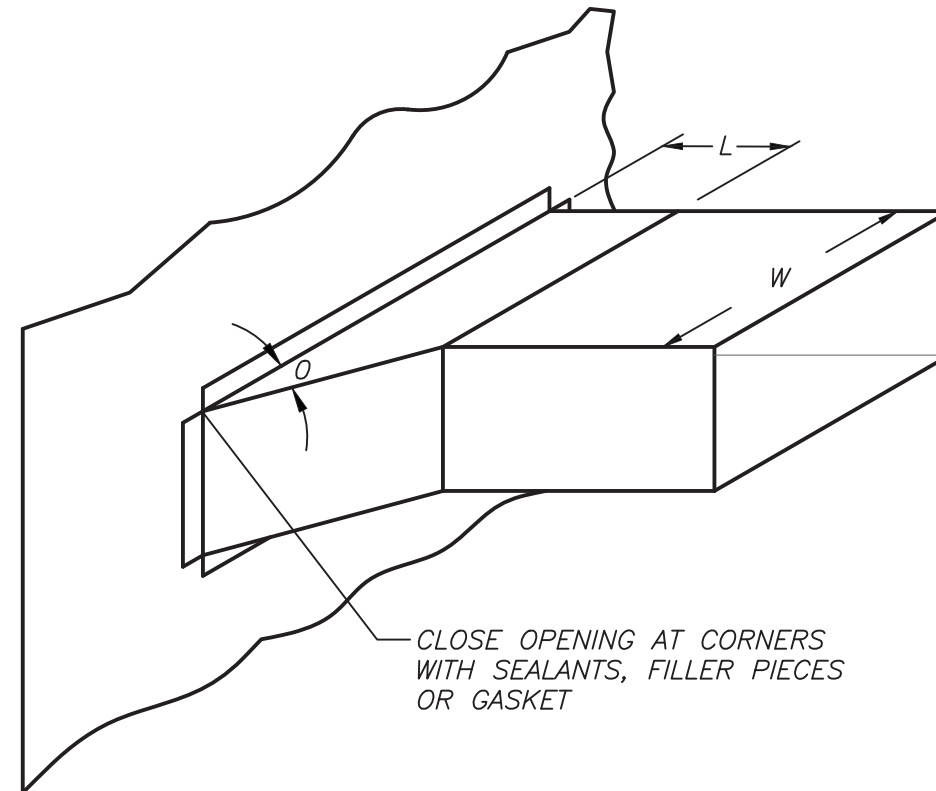
DUCT OFFSETS AND TRANSITIONS DETAIL

7
H301-AP

NO SCALE



DO NOT USE CONNECTIONS WITH SCOOPS

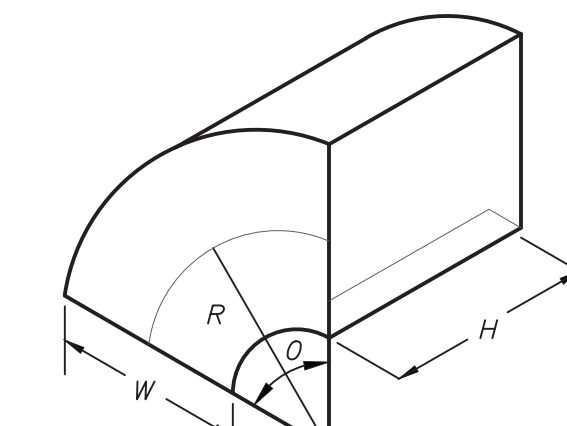


CLOSE OPENING AT CORNERS
WITH SEALANTS, FILLER PIECES
OR GASKET

DUCT BRANCH CONNECTIONS DETAIL

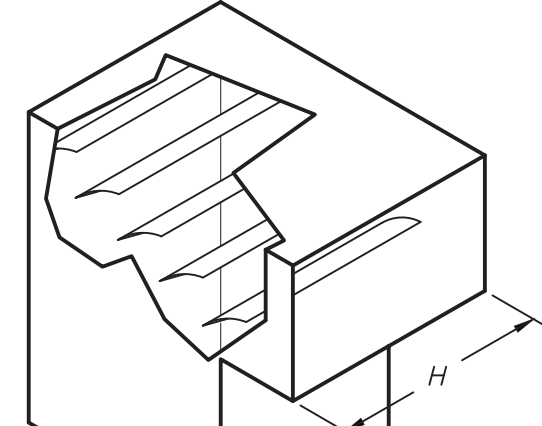
4
H301-AP

NO SCALE

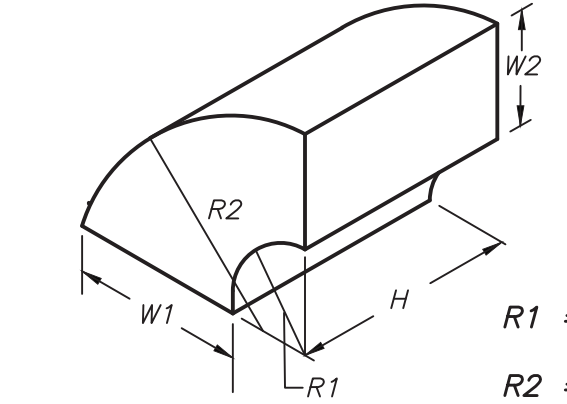


TYPE RE 1
RADIUS ELBOW

CENTERLINE $R = 3W/2$ UNLESS OTHERWISE
SPECIFIED- IS NOT RESTRICTED TO 90°
SQUARE THROAT $R/W = 0.5$, MAY BE USED,
UP TO 1000 FPM (5 MPS)

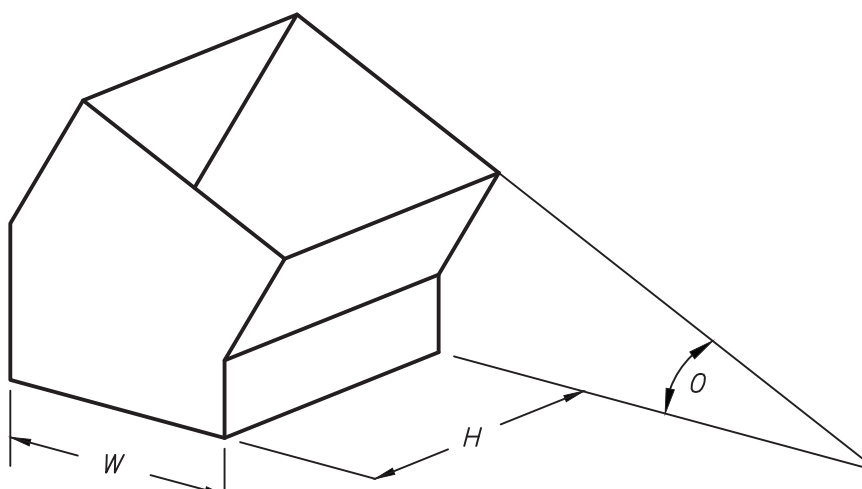


TYPE RE 2
SQUARE THROAT ELBOW
WITH VANES



TYPE RE 5
DUAL RADIUS ELBOW

BEAD, CROSSBREAK AND REINFORCE FLAT SURFACES AND STRAIGHT DUCT

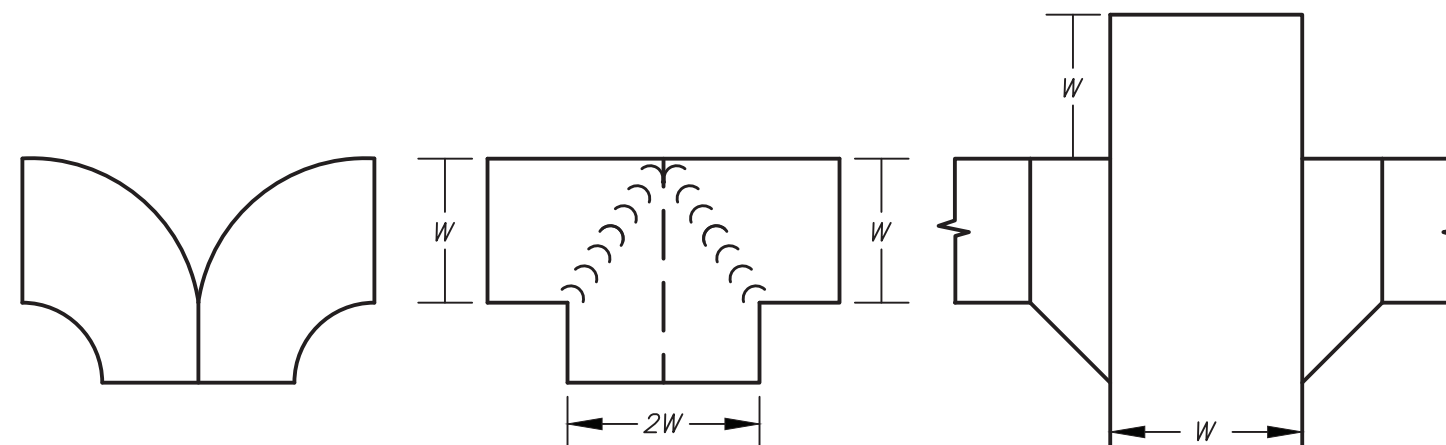


TYPE RE 6
MITERED ELBOW

DUCT RECTANGULAR ELBOWS DETAIL

5
H301-AP

NO SCALE

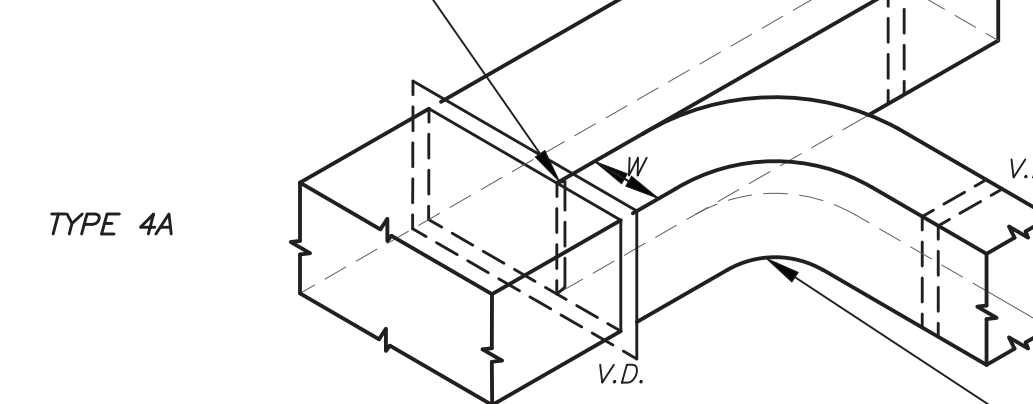


TYPE 1

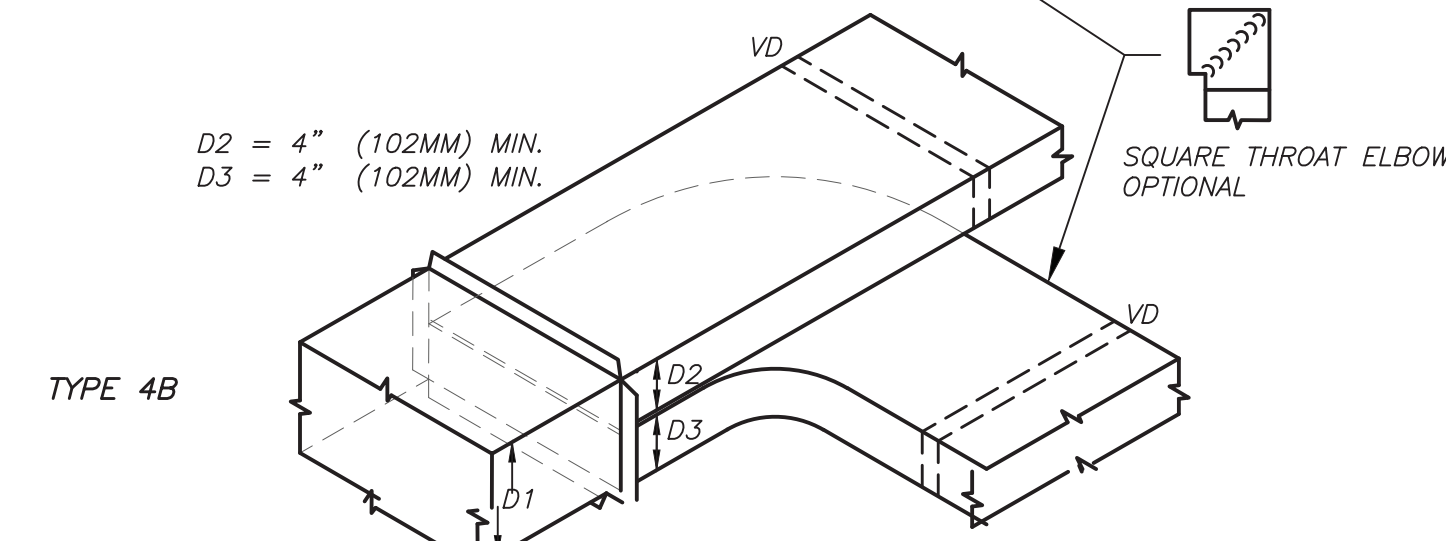
TYPE 2

TYPE 3

* S-SLIP OR U CLIP OPTIONAL
ALL SUCH CONNECTIONS TO BE
SEALED



TYPE 4A



TYPE 4B

VOLUME CONTROL BY BRANCH DAMPERS
SPLITTER LENGTH SHOULD BE 1.5 W OR 1.5 D3

DUCT DIVIDED FLOW BRANCHES DETAIL

6
H301-AP

NO SCALE

SCHEDULE OF EXHAUST FANS

MARK	SERVICE	LOCATION	MODEL No. ①	TYPE	CFM	EXT. S.P. IN H ₂ O	RPM	HP	ELECTRIC V/PH/Hz	SIZE (IN)	WEIGHT (LBS.)	REMARKS
①	ATHLETIC FIELD STORAGE	STORAGE	SBE	PROPELLER	2,500	0.35	810	1/2	120/1/60	32Lx32Wx20H	100	REFER TO ②④⑤
②	ATHLETIC PAVILION TOILETS	MECH 07	SQ-99-VG	IN-LINE CENTRIFUGAL	650	1.0	1860	1	120/1/60	21Lx15Wx15H	67	REFER TO ②③⑤
③	ATHLETIC PAVILION MECH	MECH 06	SP-A250	CABINET	250	0.25	900	60W	120/1/60	14Lx12Wx12H	25	REFER TO ②③⑤

NOTES
① AS MANUFACTURED BY "GREENHECK".
② INSTALL PER MANUFACTURER'S RECOMMENDATIONS.
③ PROVIDE VIBRATION ISOLATORS, BACKDRAFT DAMPER,
SPEED CONTROL, DISCONNECT SWITCH, AND NAMEPLATE
IDENTIFYING FAN MARK, MODEL NO., CFM, RPM, HP, AND
ELECTRICAL SERVICE
④ PROVIDE ROOF CURB, WEATHERPROOF
FACTORY MOUNTED, DISCONNECT SWITCH,
INTERNALLY MOUNTED VARIABLE SPEED
CONTROLLER, MOTORIZED DAMPER, AND
NAMEPLATE IDENTIFYING FAN MARK, MODEL
NO., CFM, RPM, HP, AND ELECTRICAL SERVICE
⑤ INDICATED EQUIPMENT DESIGNATIONS ARE FOR USE IN CONSTRUCTION ONLY.
CONTRACTOR SHALL COORDINATE WITH OWNER ON DESIRED FINAL TAG
IDENTIFICATION / NUMBERING / LETTERING. OWNER APPROVED DESIGNATIONS SHALL
BE USED IN BMS PROGRAMMING AND ON PERMANENT EQUIPMENT IDENTIFICATION
TAGS. AS-BUILT DRAWINGS SHALL BE UPDATED WITH FINAL IDENTIFICATION TAG
DESIGNATIONS.

SCHEDULE OF GAS UNIT HEATERS

MARK	MODEL No. ①	BURNER DATA INPUT (BTUH) OUTPUT (BTUH)	FUEL	MOTOR HP	ELECTRIC SERVICE	PHYSICAL DATA LxWxH	WEIGHT (LBS)	REMARKS
①	UEASB5	85,000 79,050	PROPANE	0.5	120/1/60	30/33/21	105	REFER TO ②③④⑤

NOTES
① AS MANUFACTURED BY "REZNOR".
② INSTALL PER MANUFACTURER'S RECOMMENDATIONS
③ SET TO LOW SPEED. PROVIDE UNIT MOUNTED VARIABLE SPEED CONTROLLER AND MANUAL THERMOSTAT.
④ SUPPORT BY STRUCTURE & PROVIDE ALL CLEARANCES.

SCHEDULE OF REGISTERS AND DIFFUSERS

MARK	TYPE	SERVICE	MODEL No. ①	DIRECTION DISCHARGE	DAMPER TYPE	FINISH	REMARKS
①	CEILING REGISTER	RETURN	635	-	OPPOSED BLADE	PER ARCH.	REFER TO ②③④⑤

NOTES
① AS MANUFACTURED BY "PRICE".
② INSTALL PER MANUFACTURER'S RECOMMENDATIONS.
③ PROVIDE CABLE OPERATED DAMPERS IN UN-ACCESSIBLE AREAS.
④ PROVIDE MOUNTING FRAME COMPATIBLE W/ MOUNTING SURFACE, COORDINATE ALL
BORDER TYPES, COLORS, FINISHES, AND DIMENSIONS WITH ARCHITECT.

5 RETURN NECK SIZE PER CFM RANGE (NOT TO EXCEED 675 fpm)							
50 TO 149	150 TO 249	250 TO 399	400 TO 599	600 TO 799	800 TO 1099	1100 TO 1199	1200 TO 2399
6x6	8X8	10X10	12X12	14X14	16X16	18X18	24X24