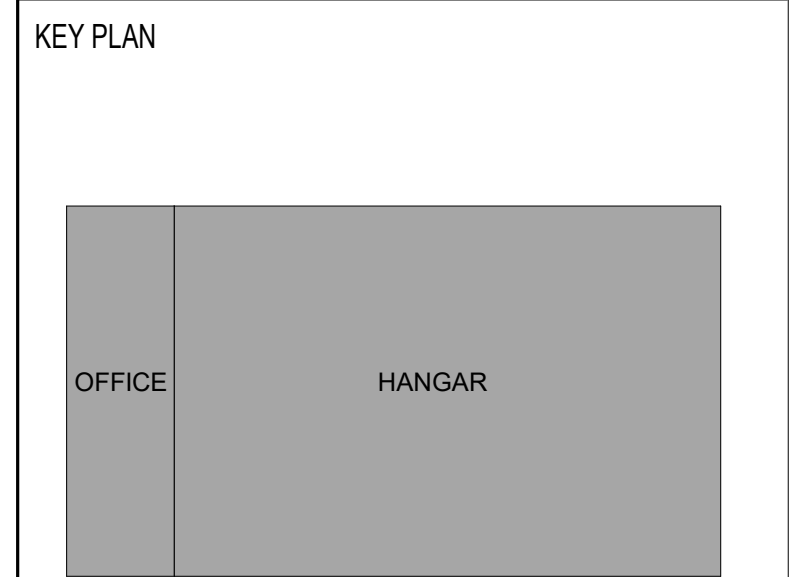


REVISIONS		
MARK	DESCRIPTION	DATE
1	Permit Comments	6/28/2024
3	BID RFI Responses	8/12/2024



SIGNATURE STEWART (SWF)
HANGAR

1188 1ST STREET, NEW WINDSOR, NY 12553



SIGNATURE FLIGHT SUPPORT
13485 Veteran's Way Suite 600
Orlando, FL 32827

ISSUE DATE: 06/12/2024
COMM. NO.: 23715

DRAWN BY: Author CHECKED BY: Checker

LIFE SAFETY PLAN - FLOOR
PLAN

G101

100% PERMIT SET

TRAVEL PATH ID **A** EGRESS PATH (SEE PLAN)

PRIMARY EGRESS

EXIT SIGN

FE FIRE EXTINGUISHER, WALL MOUNTED

FEC FIRE EXTINGUISHER IN SEMI-RECESSED CABINET

LOCK BOX: EXACT LOCATION TO BE COORDINATED WITH LOCAL FIRE DEPARTMENT. MOUNTING HT. 6'-8" A.F.F., TIE TO FIRE ALARM

DOOR CAPACITY TAG

EGRESS CAPACITY OF DOOR PER LIFE SAFETY CODE

1340 1340 1340 1340

ARROW INDICATES DIRECTION OF TRAVEL

NOTES:

1. REFER TO SYSTEM DRAWINGS FOR LOCATION OF HEAT AND SMOKE DETECTORS

2. REFER TO MECHANICAL FOR LOCATION OF FIRE AND SMOKE DAMPERS

3. COORDINATE WITH ELECTRICAL DRAWINGS FOR EXACT LOCATION OF EMERGENCY LIGHTING, FIRE ALARM STROBES, AND PULL STATIONS

4. REFER TO TRAVEL DISTANCE SCHEDULE FOR TRAVEL DISTANCES

5. PROVIDE GRAPHIC EVACUATION ROUTE DIAGRAMS FOR ALL OCCUPIED SPACES

6. CLEARLY DESIGNATING THE EXIT ROUTE TO THE EXTERIOR OF THE BUILDING

7. ALL DOORS IN A MEANS OF EGRESS TO BE EQUIPPED WITH LOOKING AND LATCHING HARDWARE THAT DOES NOT REQUIRE A KEY, TOOL OR SPECIAL KNOWLEDGE OR EFFORT FROM THE EGRESS SIDE TO OPEN. ALL HARDWARE MUST COMPLY WITH NFPA 101.2.1.6

8. PROVIDE ACRYLIC SIGN IDENTIFYING THE USE OF THE EXTINGUISHER AS SECONDARY BACKUP MEANS TO THE AUTOMATIC FIRE-EXTINGUISHER SYSTEM CONSPICUOUSLY PLACED NEAR EACH PORTABLE FIRE EXTINGUISHER PER NFPA 96.10.2.2

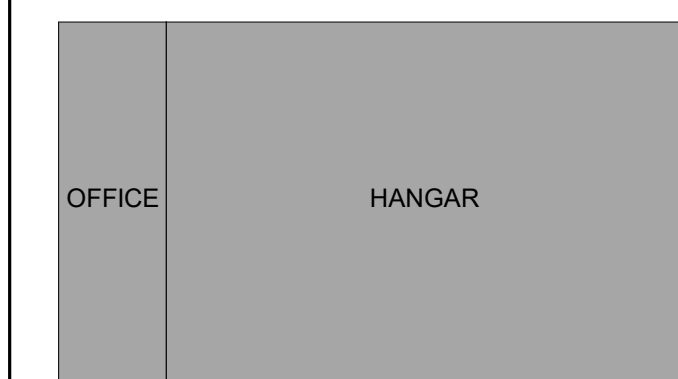
9. PERMANENTLY IDENTIFY ALL FIRE RATED/SMOKE WALLS/PARTITIONS IN ACCORDANCE WITH NYSBC 2017 SECTION 703.2

10. DURING THE ENTIRE CONSTRUCTION PERIOD, PROVIDE ONE UL LISTED PORTABLE FIRE EXTINGUISHER AT ALL TIMES IN THE FOLLOWING SPACES: TERMINAL (1ST & 2ND FLOOR), HANGAR AND GSE.

TRAVEL DISTANCE SCHEDULE	
TRAVEL PATH ID	TRAVEL DISTANCE
A	60'-6"
B	34'-0"
C	58'-0"
E	247'-0"
F	139'-0"
Grand total: 21	539'-0"

REVISIONS		
MARK	DESCRIPTION	DATE
1	Permit Comments	6/28/2024
3	BID RFI Responses	8/12/2024

KEY PLAN



SIGNATURE STEWART (SWF)
HANGAR

1188 1ST STREET, NEW WINDSOR, NY 12553



**SIGNATURE
AVIATION**

SIGNATURE FLIGHT SUPPORT
13485 Veteran's Way Suite 600
Orlando, FL 32827

ISSUE DATE: 06/12/2024

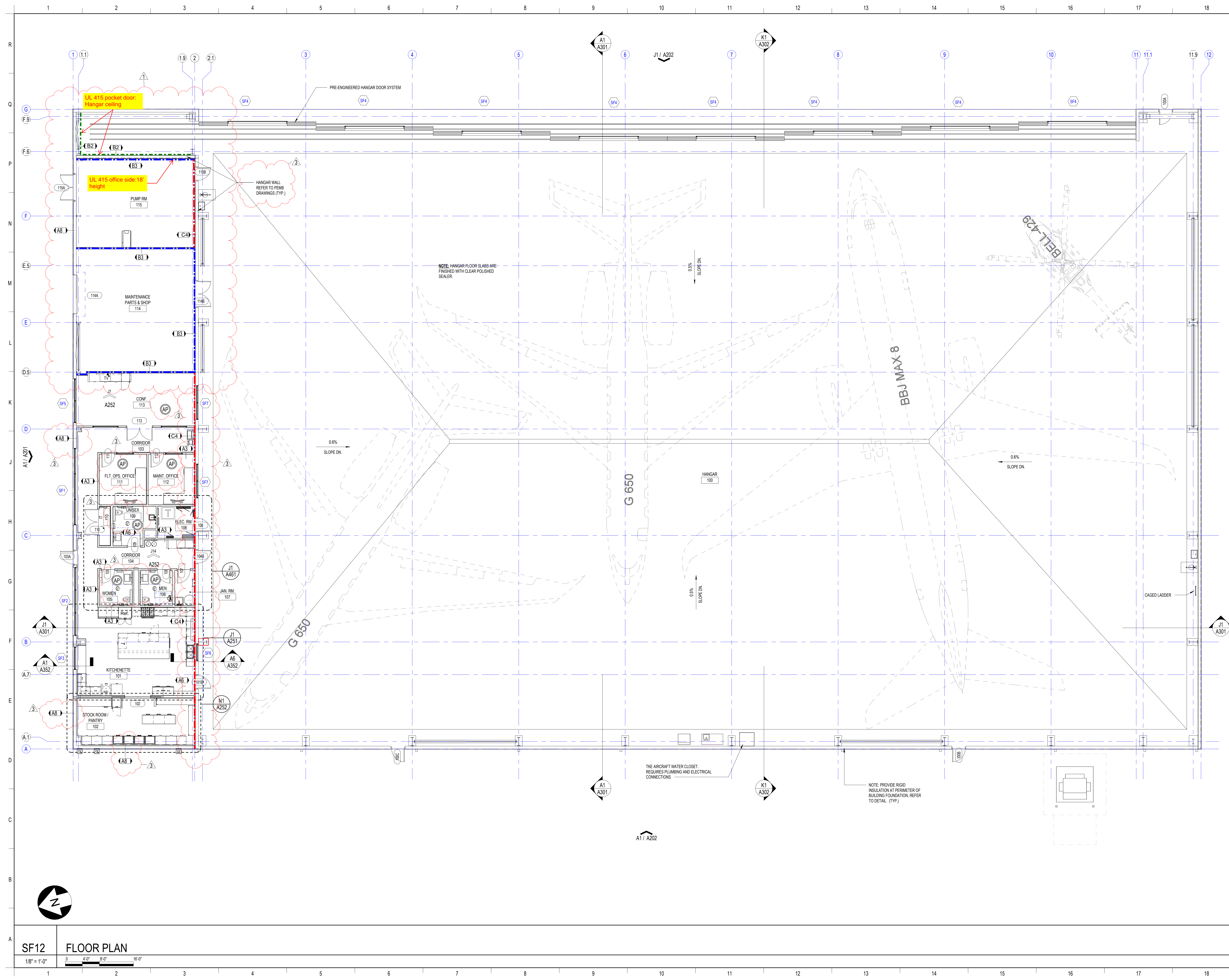
DRAWN BY: HDG

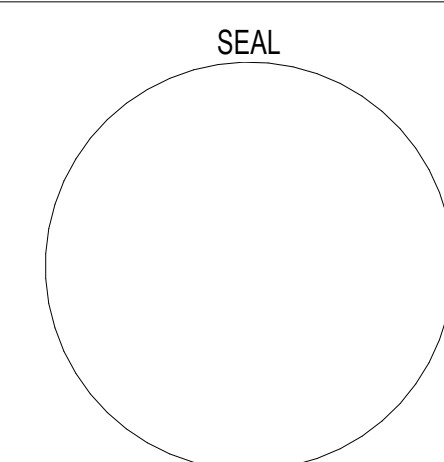
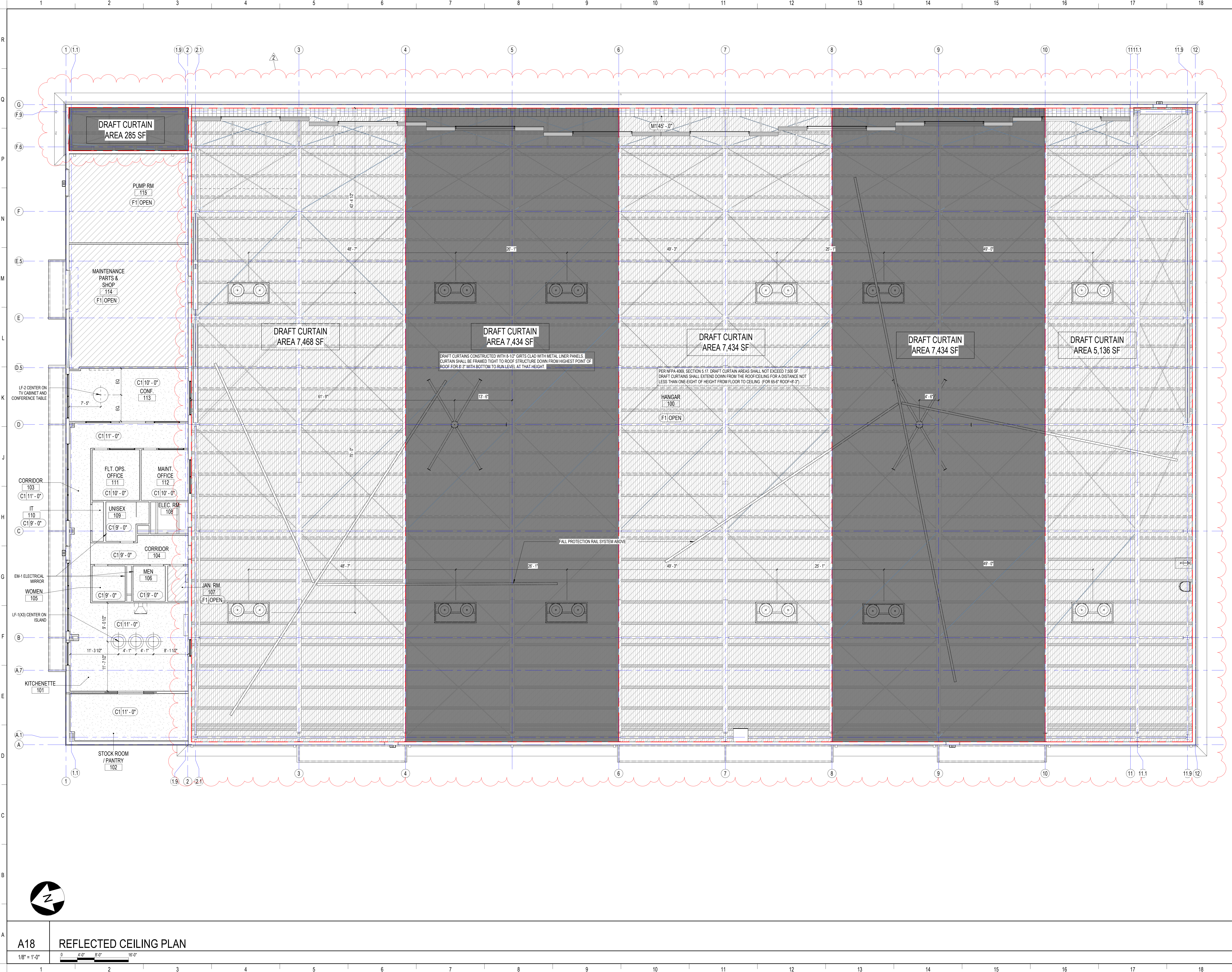
CHECKED BY: HDG

ARCHITECTURAL FLOOR PLAN

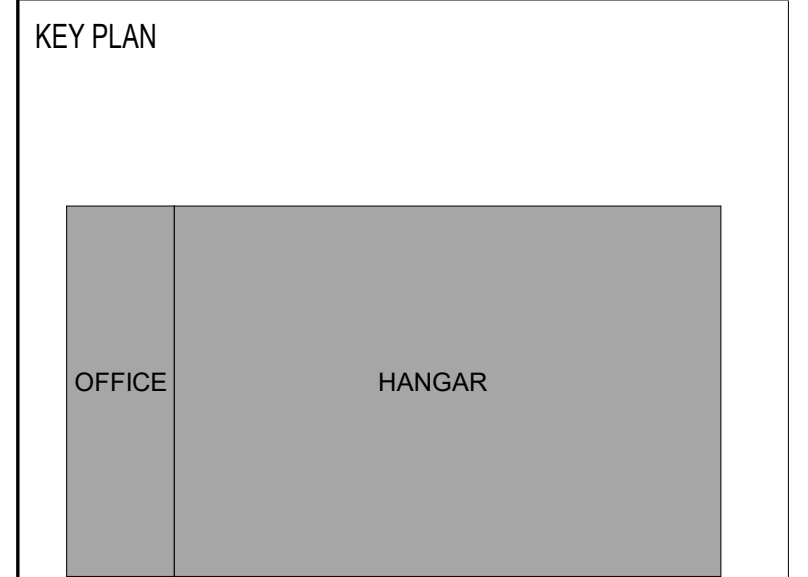
A101

100% PERMIT SET





REVISIONS		
MARK	DESCRIPTION	DATE
2	Internal Coordination (PEMB)	7/12/2024



SIGNATURE STEWART (SWF)
HANGAR

1188 1ST STREET, NEW WINDSOR, NY 12553



SIGNATURE FLIGHT SUPPORT
13485 Veteran's Way Suite 600
Orlando, FL 32827

ISSUE DATE: 06/12/2024
COMM. NO.: 23715

DRAWN BY: Author CHECKED BY: Checker

REFLECTED CEILING PLAN

A141

100% PERMIT SET

	1	2	3	4	5	6	7	8	9	10	11	12	13	14	15	16	17	18
R																		
Q																		
P																		
N																		
M																		
L																		
K																		
J																		
H																		
G																		
F																		
E																		
D																		
C																		
B																		
A																		
	1	2	3	4	5	6	7	8	9	10	11	12	13	14	15	16	17	18

FLOOR FINISH - PTF-1

FLOOR FINISH - PTF-2

SEALED CONCRETE SC-1

HANGAR FLOOR SC-2

FLOOR FINISH - EPX-1

GENERAL FINISH NOTES

1. REFER TO ARCHITECTURAL AREA PLANS FOR INTERIOR ELEVATION TAGS.

2. REFER TO FINISH LEGEND & CODE SCHEDULES FOR FINISH TAG DESIGNATIONS.

3. REFER TO G-001 FOR WALL FINISH TAG DESCRIPTION.

4. REFER TO SHEET A160.2 FOR ALL INTERIOR TRANSITION DETAILS.

5. ROOMS LISTED WITH 'PTL' ARE TO BE PTL-1 U.N.O. IN SCHEDULE.

6. ROOMS LISTED WITH 'RB' ARE TO BE RB-1 U.N.O. IN SCHEDULE.

7. ANY LOCATION WHERE TWO FLOORING FINISHES COME IN A DOORWAY, EXTEND THE FLOORING TO MEET AT CENTERLINE OF DOOR.

8. FOR TRANSITIONS OF DIFFERENT THICKNESS, USE FLOOR LEVELING TRANSITION MATERIAL AND FEATHER OUT OVER 2'-0" TO PROVIDE AN EVEN TRANSITION- WHERE APPLICABLE. PRIOR TO FLOORING INSTALLATION, TEST CONCRETE SLAB FOR MOISTURE CONTENT BASED ON MANUFACTURERS RECOMMENDATION. PAINT RECESS ELECTRICAL PANELS TO MATCH ADJACENT WALL.

9. ALL VINYL WALL BASE TO BE INSTALLED IN LENGTHS AS LONG AS FEASIBLE WITHOUT GAPS AT SEAMS. TOP OF BASE TO ALIGN WITH ADJACENT PIECE.

11. CONTRACTOR TO SECURE CUSTOMER/SPECIAL LONG LEAD ITEMS FROM MANUFACTURER

12. VERIFY ALL FIELD DIMENSIONS/CONDITIONS PRIOR TO INSTALLATION. ALL RESTROOM WALLS TO BE TILE U.N.O. REFER TO ELEVATIONS FOR TILE PATTERN. (TILE BEHIND ALL MIRRORS U.N.O. ALL PAINTED AREAS TO BE EPOXY PAINT PTE-1 U.N.O.)

14. PROVIDE STAINLESS STEEL CORNER GUARDS TO 48" HIGH-ALL OUTSIDE CORNERS AS INDICATED IN PLAN (BACK OF HOUSE AREAS).

ID-PORCELAIN TILE AND BASE SCHEDULE

FINISH CODE	MANUFACTURER	MFG. LINE	COLOR	TYPE	SIZE	FINISH	GROUT MANUF	GROUT NO.	GROUT COLOR	REP CONTACT	REMARKS
PTB-1	SCHLUTER	DILEX-AH	BRUSHED BRASS ANODIZE	COVE BASE							COVE BASE, OUTSIDE CORNERS USE TRIM-1 FOR RESTROOM
PTF-1	GARDEN STATE TILE	PERUGIA	GREY	PORCELAIN FLOOR	24" X 48"	MATTE	CUSTOM BUILD PRODUCTS		543 DRIFTWOOD	MICHAEL HUBERT 407-982-0430	REFER TO FINISH PLAN FOR LOCATIONS
PTF-2	GARDEN STATE TILE	PERUGIA	GREY	PORCELAIN FLOOR	12" X 24"	MATTE	CUSTOM BUILD PRODUCTS		543 DRIFTWOOD	MICHAEL HUBERT 407-982-0430	REFER TO FINISH PLAN FOR LOCATIONS
PTW-1	GARDEN STATE TILE	PERUGIA	GREY	PORCELAIN WALL	24" X 48"	MATTE	CUSTOM BUILD PRODUCTS		543 DRIFTWOOD	MICHAEL HUBERT 407-982-0430	REFER TO ELEVATIONS FOR LOCATIONS
PTW-2	STP TILE	ODRISCA	TURCHESE EGG 30	PORCELAIN WALL	4"x4"	GLOSSY	CUSTOM BUILD PRODUCTS		543 DRIFTWOOD	SHANNON POLER 407-489-2314	INSTALL VERTICAL ON ACCENT ACCENT
TRIM-1	SCHLUTER	JOLLY	BRUSHED BRASS	TRIM	1/2"						TILE EDGE TRIM

ID-EPOXY FLOORING SCHEDULE

FINISH CODE	MANUFACTURER	MFG. LINE	STYLE NO.	COLOR	THICKNESS	REP CONTACT	REMARKS
EPX-1	SIKA	POUR EPOXY	DECODUR FLAKE UEF	LUCID		JUAN LEON 256-483-0968	REFER TO FINISH PLANS FOR LOCATIONS

ID-RUBBER BASE CODE SCHEDULE

FINISH CODE	MANUFACTURER	STYLE NO.	TYPE	COLOR	SIZE	THICKNESS	REMARKS
RB-1	TARKETT COMMERCIAL	TRADITIONAL 4"	VINYL	48 GREY	4"		REFER TO FINISH PLAN FOR LOCATIONS

ID-SEALED / STAINED CONCRETE SCHEDULE

FINISH CODE	MANUFACTURER	MFG. LINE	STYLE NO.	COLOR	FLAME SPREAD RATING	REMARKS
SC-1	REFER TO ARCH SPECS	SEALED CONCRETE REFER TO ARCHITECTURAL SPECS-SPEC SECTION 09 99 01				
SC-2	REFER TO ARCH SPECS	POLISHED CONCRETE REFER TO ARCHITECTURAL SPECS-SPEC SECTION 03 35 43				

ID-PAINT SCHEDULE

FINISH CODE	MANUFACTURER	COLOR	FINISH/SHEEN	TYPE	REP CONTACT	REMARKS
PTE-1	SHERWIN WILLIAMS	SW7006 EXTRA WHITE	EPOXY	LOW VOC - SEE SPECIFICATIONS		WET AREAS WALLS U.N.O
PTL-1	SHERWIN WILLIAMS	SW7006 EXTRA WHITE	EGGSHELL WALLS/ FLAT CEILING	LOW VOC - SEE SPECIFICATIONS		EGGSHELL FINISH TYPICAL WALLS , FLAT FINISH CEILINGS U.N.O
PTL-2	SHERWIN WILLIAMS	SW6185 ESCAPE GRAY	EGGSHELL	LOW VOC - SEE SPECIFICATIONS		ACCENT WALLS
PTL-3	SHERWIN WILLIAMS	SW2811 ROOKWOOD BLUE GREEN	EGGSHELL	LOW VOC - SEE SPECIFICATIONS		ACCENT WALLS
PTL-4	SHERWIN WILLIAMS	SW7006 EXTRA WHITE	GLOSSY	LOW VOC - SEE SPECIFICATIONS		TRIMS AND INTERIOR DOORS FRAMES
PTL-5	SHERWIN WILLIAMS	SW6403 ESCAPADE GOLD	EGGSHELL	LOW VOC - SEE SPECIFICATIONS		ACCENT WALLS
PTL-6	SHERWIN WILLIAMS	SW2803 ROOKWOOD TERRA COTTA	EGGSHELL	LOW VOC - SEE SPECIFICATIONS		ACCENT WALLS

ID-QUARTZ SURFACES SCHEDULE

FINISH CODE	MANUFACTURER	TYPE	COLOR	SIZE	REP CONTACT	REMARKS
QTZ-1	CAMBRIA	QUARTZ	BRITTANICCA WARM	SLAB	TANYA BARKER 689-231-2493	2CM VERTICAL APPLICATION ON WALLS AND 3CM FOR COUNTERTOPS RIMROCK EDGE- REFER TO DRAWINGS FOR LOCATIONS.

ID-WOOD SCHEDULE

FINISH CODE	MANUFACTURER	MFG. LINE	SPECIES	COLOR	SIZE	REMARKS
WD-1	BY GC	FLAT TRIM BASE	PAINT GRADE	PAINTED PTL-4	6" H	BASE MOULDING REFER TO DRAWINGS FOR LOCATION
WDS-1	BY GC	MILLWORK STAINED GRADE	STAINED GRADE - MAPLE	TO MATCH PL-1		PROVIDE PAINTED SAMPLE TO DESIGNER/ARCHITECT FOR APPROVAL-REFER TO DRAWINGS FOR LOCATION.

ID-PLASTIC LAMINATE SCHEDULE

FINISH CODE	MANUFACTURER	STYLE NO.	COLOR	FINISH/SHEEN	REP CONTACT	REMARKS
PL-1	WILSONARAT	PLASTIC LAMINATE	LANDMARK WOOD 7981	12 SOFT GRAIN		MILLWORK MAIN WOOD STAIN COLOR- REFER TO DRAWINGS FOR LOCATIONS

ID-MISC SCHEDULE

FINISH CODE	MANUFACTURER	TYPE	STYLE NAME	STYLE NO.	FINISH/SHEEN	SIZE	REP CONTACT	REMARKS
HWD-1	RUDUNEST STORE BY AMAZONE	CABINET PULL GOLD	CABINET HANDLE SQUARE DRAWER PULLS		GOLD	10" LONG		CABINET PULLS. REFER TO ELEVATIONS FOR INSTALLATION DIRECTION.
HWD-2	IRON SUPPORTS	BRACKET	HIDDEN COUNTERTOP L BRACKET		RAW STEEL	16" LONG		ISLAND OVERHAND COUNTER SUPPORT BRACKETS. REFER TO DRAWINGS FOR LOCATION
KA-1	RICHELIEU	LIFT-UP OPENING	AILERON UPWARD OPENING SYSTEM-SOFT CLOSE	75AUH3	SILVER			REFER TO ELEVATIONS FOR LOCATION
KA-2	RICHELIEU	HANGER FOR MOP/BROOM	MOP AND BROOM GRIP CLIP	23505R	WHITE	6"W		REFER TO ELEVATIONS FOR LOCATION
KA-3	RICHELIEU	DRAWER DIVIDER	FRANKFURT-COMPLETE SET OF DRAWER DIVIDER	WEBKIT1217196	BIRCH	21 5/8" WIDTH		REFER TO ELEVATIONS FOR LOCATION
KA-4	RICHELIEU	DRAWER DIVIDER	LOS ANGELES-COMPLETE SET OF DRAWER DIVIDER	WEBKIT1217116	BIRCH	23 7/8" TO 33 1/2" WIDTH		REFER TO ELEVATIONS FOR LOCATION
KA-5	RICHELIEU	PULL OUT-CASEROLE ORGANIZER	REV-A-SHELFVE 4CDS SERIES CASEROLE DISH ORGANIZER	4CDS245C1	BIRCH	24" W CABINET		REFER TO ELEVATIONS FOR LOCATION
KA-6	HAFALE	PLATE ORGANIZER	BASE PLATE FINE LINE 556.87.941 WITH (X10) ROUND POST 557.47.892	556.87.941 & 557.47.892 (X10)	BIRCH	24" W CABINET		REFER TO ELEVATIONS FOR LOCATION
KA-7	RICHELIEU	BLIND CORNER CABINET ORGANIZER	REV-A-SHELFVE 2-TIER ORGANIZER FOR BLIND CORNER CABINET	537218FOGR	ORION GRAY	18" OPENING		REFER TO ELEVATIONS FOR LOCATION
KA-8	HAFALE	PULL OUT SPICE RACK	PULL OUT SPICE RACK 545.06.102	545.06.102	BIRCH'S.S.	24" W CABINET		REFER TO ELEVATIONS FOR LOCATION
KA-9	RICHELIEU	DEEP DRAWER ORGANIZER	REV-A-SHELFVE WOOD PEG BOARD SYSTEM WITH PEGS	4DPS2421	NATURAL	24 1/2" W		REFER TO ELEVATIONS FOR LOCATION
KA-10	RICHELIEU	SLIDING BASKET FOR DISH/SOAP	PORTERO REMOVABLE SLIDING BASKET	51502140	GRAY/CHROME	11" W		REFER TO ELEVATIONS FOR LOCATION

ID-DECORATIVE LIGHT SCHEDULE

FINISH CODE	MANUFACTURER	TYPE	STYLE NAME	STYLE NO.	FINISH/SHEEN	SIZE	REP CONTACT	REMARKS
EM-1	LIRON LIGHTING	ELECTRICAL MIRROR	M05	3000K LED		36" DIA.	PAULA RAMIREZ 689-220-8244	RESTROOM MIRRORS -REFER TO DRAWINGS FOR LOCATION
LF-1	VISUAL COMFORT & CO	LARGE PENDANT	ELLIOT LARGE PENDANT	5353PGY LED	PORTLAND GRAY	30" DIA X 11.75" HIGH (6" CHAIN)		QUANTITY X3 OVER ISLAND- REFER TO RCP PLAN FOR LOCATIONS
LF-2	VISUAL COMFORT & CO	CHANDELIER	MELANGE LARGE FLOATING DISC CHANDELIER	KW 5602AB-ALB	ANTIQUE BURNISHED BRASS	14" H X 44.75" W (OJA HEIGHT 47.75")		CONFERENCE ROOM-REFER TO RCP FOR LOCATIONS
LF-3	BEULLUX	RECESSED LINEAR CABINET LIGHTING	RECESSED EXTRUSION	JE08-SL-F-L360-IP00-CT30-EC-MCM-X	ANODIZED SILVER	78.74"L, 0.98"W, H 0.28"H (CUT TO SIZE)	PAULA RAMIREZ 689-220-8244	UPPER CABINETS UNDER LIGHTING-REFER TO DRAWINGS FOR LOCATIONS
LF-4	EKLIPSE ARCHITECTURAL LIGHTING	CABINET LIGHTING	PROXI	PXE-24V-2.5W-ACL-3000K-90CRI-(LEN THS VARIOUS)		REFER TO DRAWINGS FOR VARIOUS LENGTHS	PAULA RAMIREZ 689-220-8244	PROVIDE DRIVERS AS NECESSARY. INTERNAL CABINET LIGHTING -REFER TO DRAWINGS FOR LOCATION
LF-5	BEULLUX	TAPELIGHT	FLORENCE SURFCE MOUNT	JE02-SL-F-L360-IP00-CT30-EC-MC-X			PAULA RAMIREZ 689-220-8244	SURFACE MOUNT UNDER COUNTER ISLAND LIGHTING -REFER TO DRAWINGS FOR LOCATION

FINISH PLAN LEGEND

3

SEAL

REVISIONS

MARK	DESCRIPTION	DATE
3	BID RFI Responses	8/12/2024

KEY PLAN

OFFICE

HANGAR

SIGNATURE STEWART (SWF) HANGAR

1188 1ST STREET, NEW WINDSOR, NY 12553

SIGNATURE AVIATION

SIGNATURE FLIGHT SUPPORT
13485 Veteran's Way Suite 600
Orlando, FL 32827

ISSUE DATE: 06/12/2024
COMM. NO.: 23715

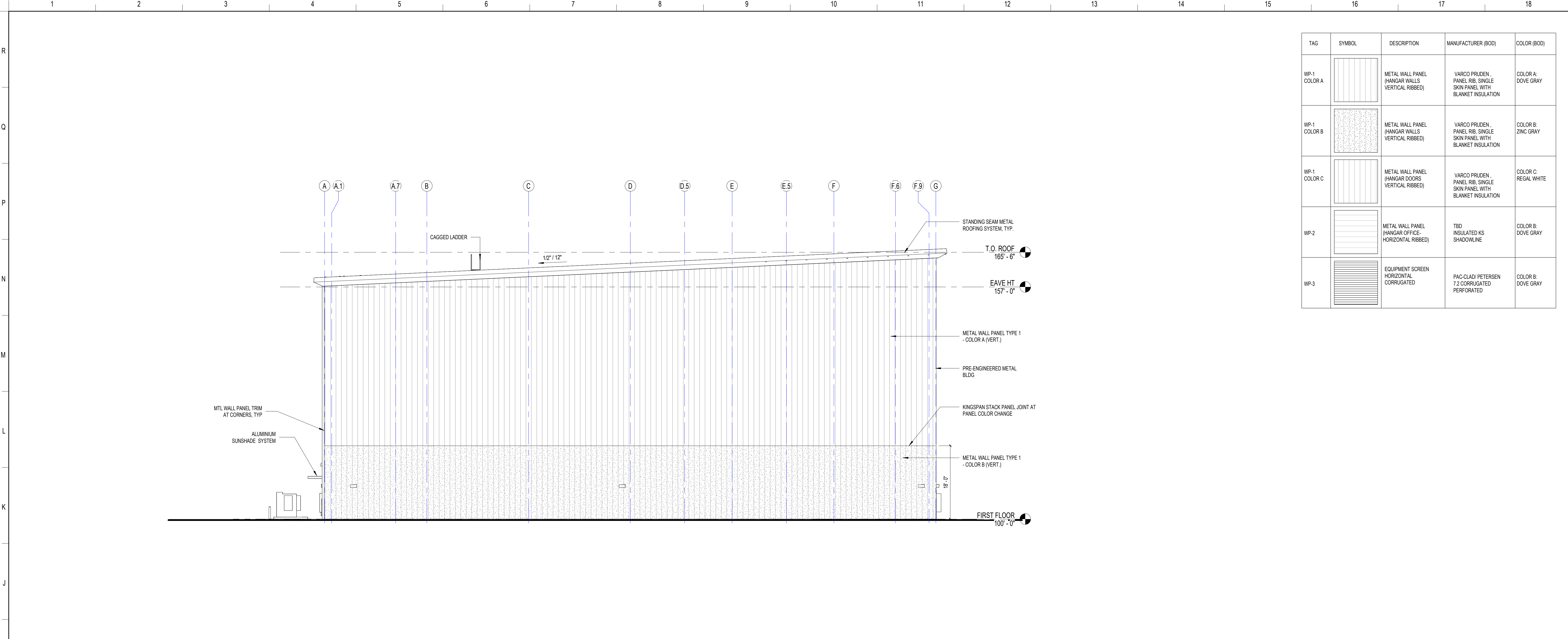
DRAWN BY: Author CHECKED BY: Checker

FINISH SCHEDULE

A160

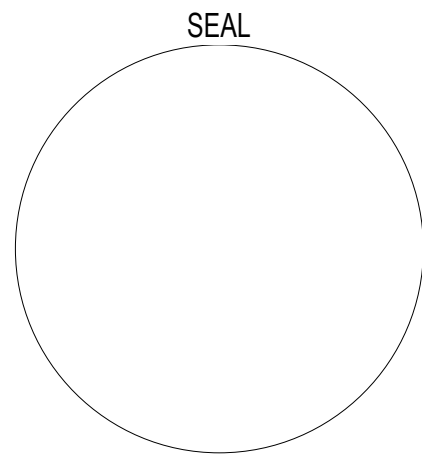
100% PERMIT SET

01/22/2024 4:08:38 PM
AutoSave Dwg:23715 - 01WF Terminal and Hangar (Halle House)23715 - 01WF HANGAR_A_190223.rvt



TAG	SYMBOL	DESCRIPTION	MANUFACTURER (BOD)	COLOR (BOD)
WP-1 COLOR A		METAL WALL PANEL (HANGAR WALLS VERTICAL RIBBED)	VARCO PRUDEN, PANEL RIB, SINGLE SKIN PANEL WITH BLANKET INSULATION	COLOR A: DOVE GRAY
WP-1 COLOR B		METAL WALL PANEL (HANGAR WALLS VERTICAL RIBBED)	VARCO PRUDEN, PANEL RIB, SINGLE SKIN PANEL WITH BLANKET INSULATION	COLOR B: ZINC GRAY
WP-1 COLOR C		METAL WALL PANEL (HANGAR DOORS VERTICAL RIBBED)	VARCO PRUDEN, PANEL RIB, SINGLE SKIN PANEL WITH BLANKET INSULATION	COLOR C: REGAL WHITE
WP-2		METAL WALL PANEL (HANGAR OFFICE: HORIZONTAL RIBBED)	TBD INSULATED KS SHADOWLINE	COLOR B: DOVE GRAY
WP-3		EQUIPMENT SCREEN HORIZONTAL CORRUGATED	PAC-CLAD PETERSEN 7.2 CORRUGATED PERFORATED	COLOR B: DOVE GRAY

HDg
Architecture
127 W. FAIRBANKS AVENUE, SUITE 140
WINTER PARK, FL 32789
(PH): 407-739-9000



REVISIONS		
MARK	DESCRIPTION	DATE
3	BID RFI Responses	8/12/2024

KEY PLAN



SIGNATURE STEWART (SWF)
HANGAR

1188 1ST STREET, NEW WINDSOR, NY 12553



SIGNATURE FLIGHT SUPPORT
13485 Veteran's Way Suite 600
Orlando, FL 32827

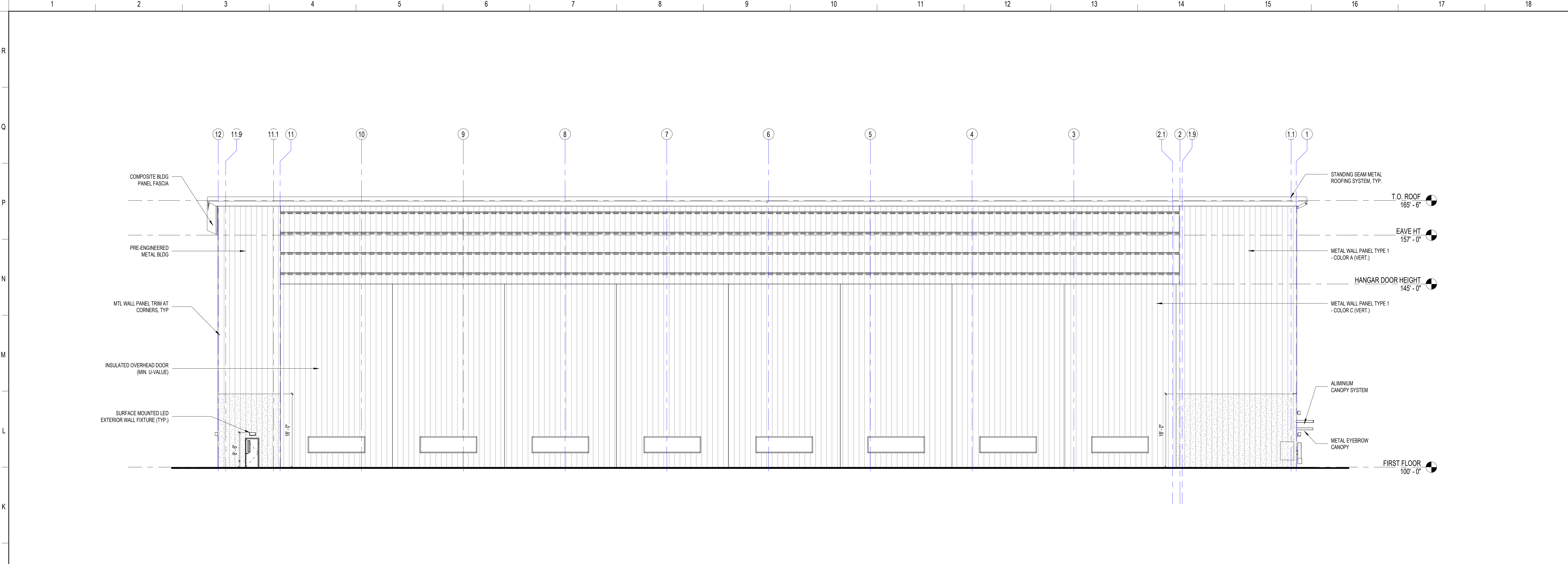
ISSUE DATE: 06/12/2024
COMM. NO.: 23715

DRAWN BY: Author CHECKED BY: Checker

EXTERIOR ELEVATIONS

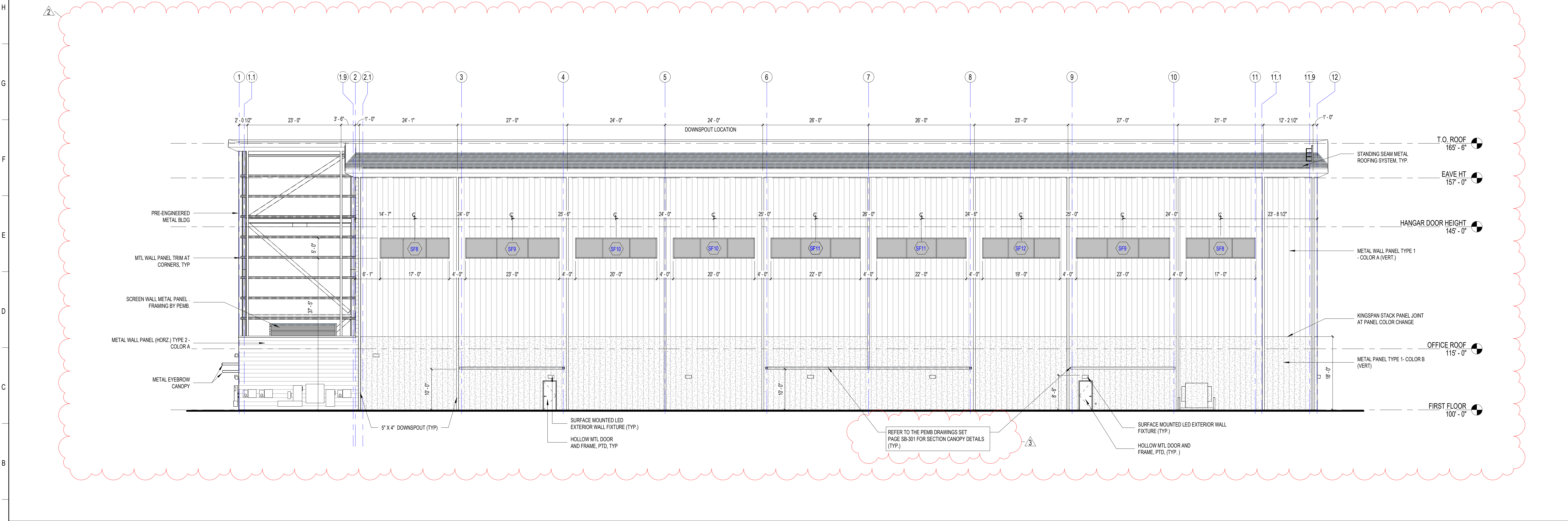
A201

100% PERMIT SET



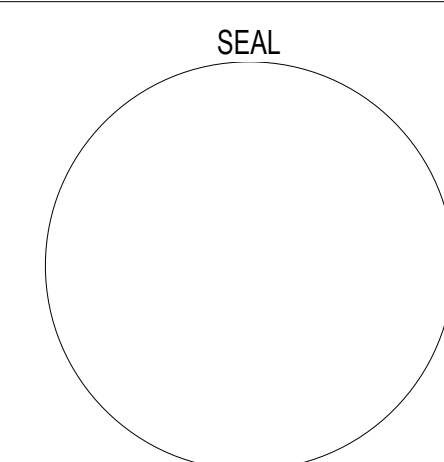
J1 EAST ELEVATION

3/32" = 1'-0"

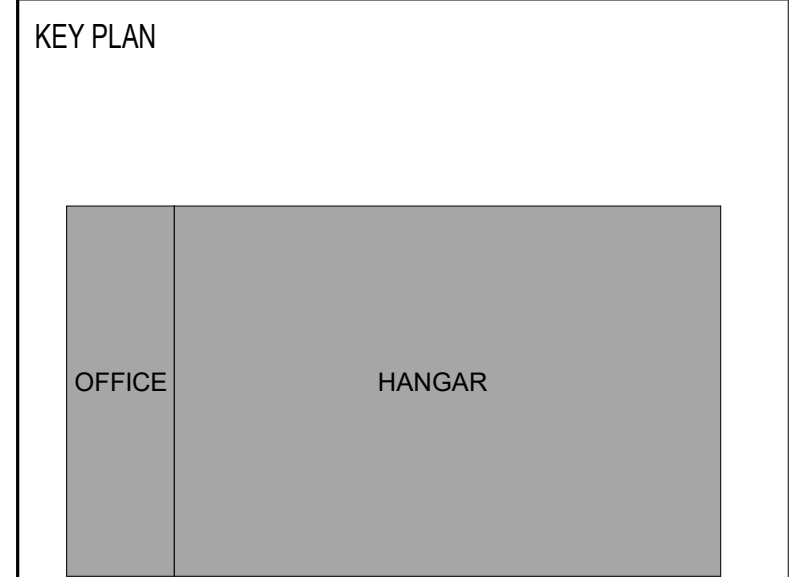


A1 WEST ELEVATION

3/32" = 1'-0"



REVISIONS		
MARK	DESCRIPTION	DATE
2	InternalCoordination (PEMB)	7/12/2024
3	BID RFI Responses	8/12/2024



SIGNATURE STEWART (SWF)
HANGAR

1188 1ST STREET, NEW WINDSOR, NY 12553



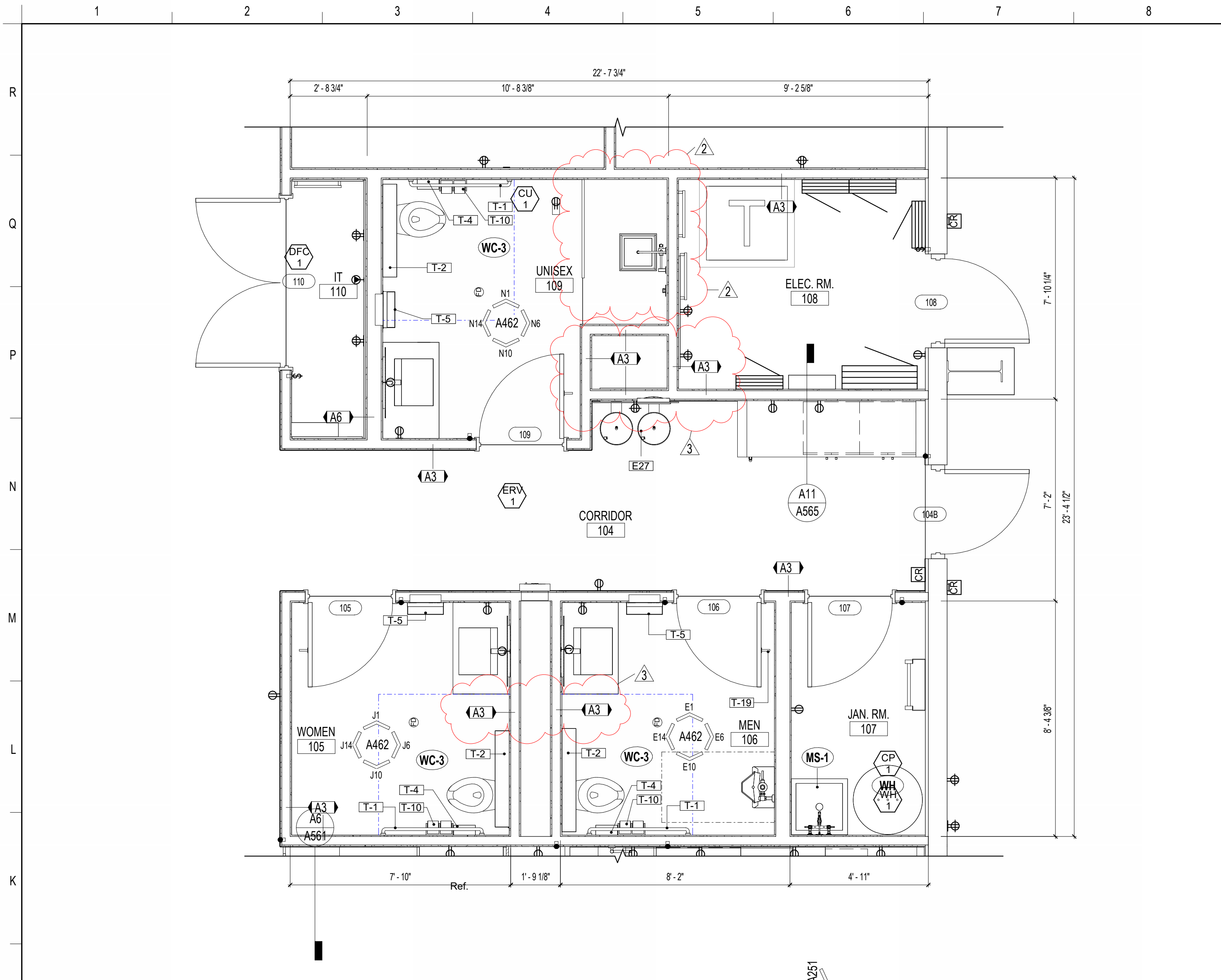
SIGNATURE FLIGHT SUPPORT
13485 Veteran's Way Suite 600
Orlando, FL 32827

ISSUE DATE: 06/12/2024
COMM. NO.: 23715

DRAWN BY: Author CHECKED BY: Checker

EXTERIOR ELEVATION

A202



J1 ENLARGED TOILET PLAN - FIRST FLOOR

3/8" = 1'-0"

0 1'-4" 2'-8" 5'-4"

GENERAL NOTES

1. ALL JANITORS FLOOR MOP SINKS TO RECEIVE 40" HIGH 18 GA SS WAINSCOT - SEE DESCRIPTION IN MOUNTING HEIGHT CHART ABOVE.
2. HEIGHTS TO COMPLY WITH ALL ADA REQUIREMENTS AND MANUFACTURER RECOMMENDATIONS.
3. ALL SINGLE USER TOILET ROOMS MUST BE SET UP TO BE HANDICAPPED ACCESSIBLE. ALL SUCH ROOMS SHALL HAVE HANDICAPPED TOILET, HANDICAPPED LAV AND GRAB BARS AND MIRRORS.

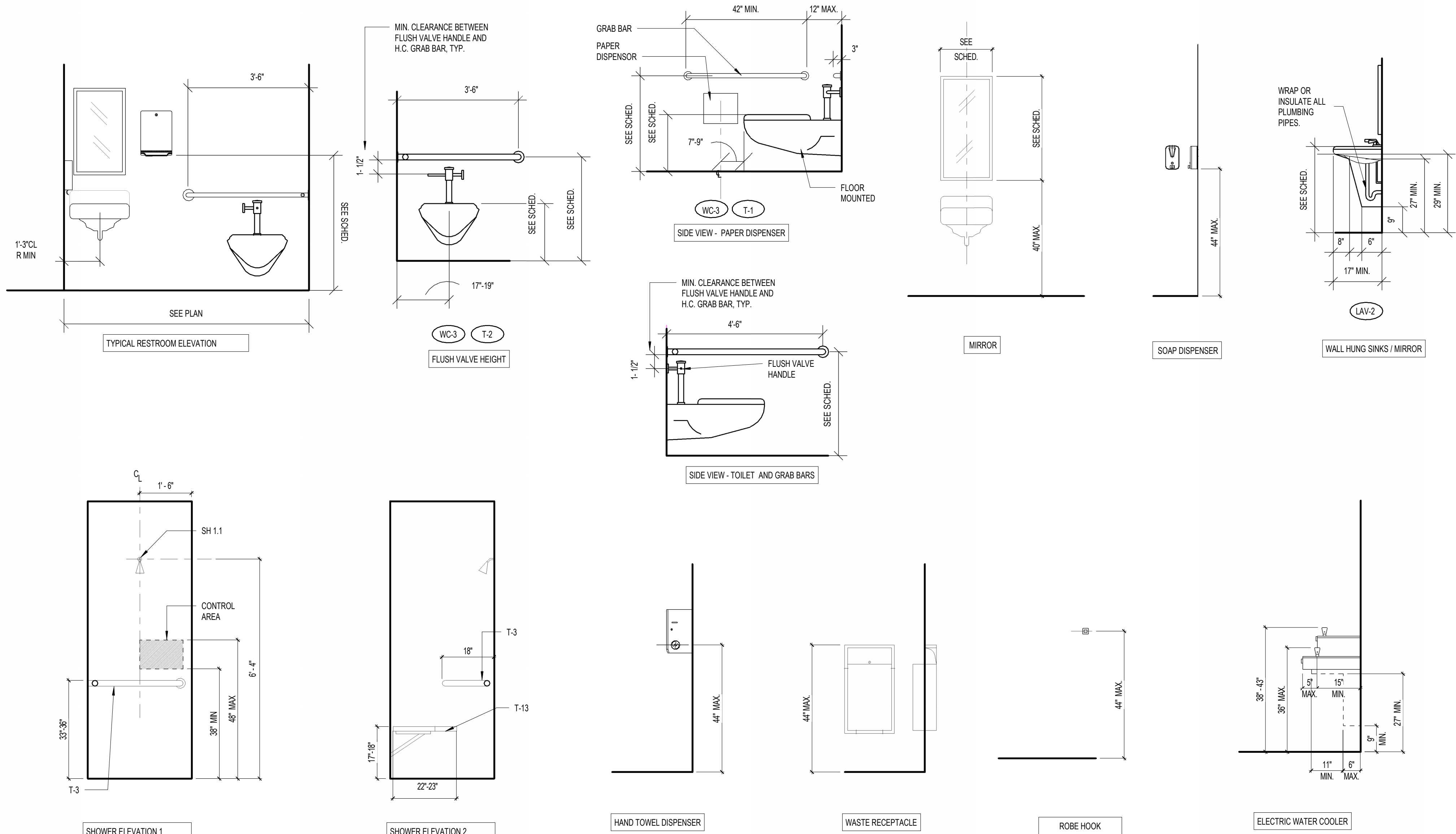
TOILET ACCESSORY SCHEDULE

MARK	DESCRIPTION	MANUFACTURER	MODEL	MOUNTING HEIGHT	REMARKS
T-1	GRAB BAR - 42 INCH	BOBRICK	B8606X42	SEE MOUNTING HEIGHT LEGEND	
T-2	GRAB BAR - 36 INCH	BOBRICK	B8606X36	SEE MOUNTING HEIGHT LEGEND	
T-4	SANITARY WIPERIN RECEPTACLE	BOBRICK	B-254		
T-5	RECESSED PAPER TOWEL DISPENSER AND WASTE RECEPTACLE	BOBRICK WASHROOM EQUIPMENT, INC.	B-3803	28" FROM F.F.	
T-7	24" x 36" L-SHAPED HORIZONTAL GRAB BAR	BOBRICK WASHROOM EQUIPMENT, INC.	B-68616		@ SHOWER
T-8	N/A				
T-10	TOILET PAPER DISPENSER	HARNEY HARDWARE	10202		

TOILET FIXTURES SCHEDULE

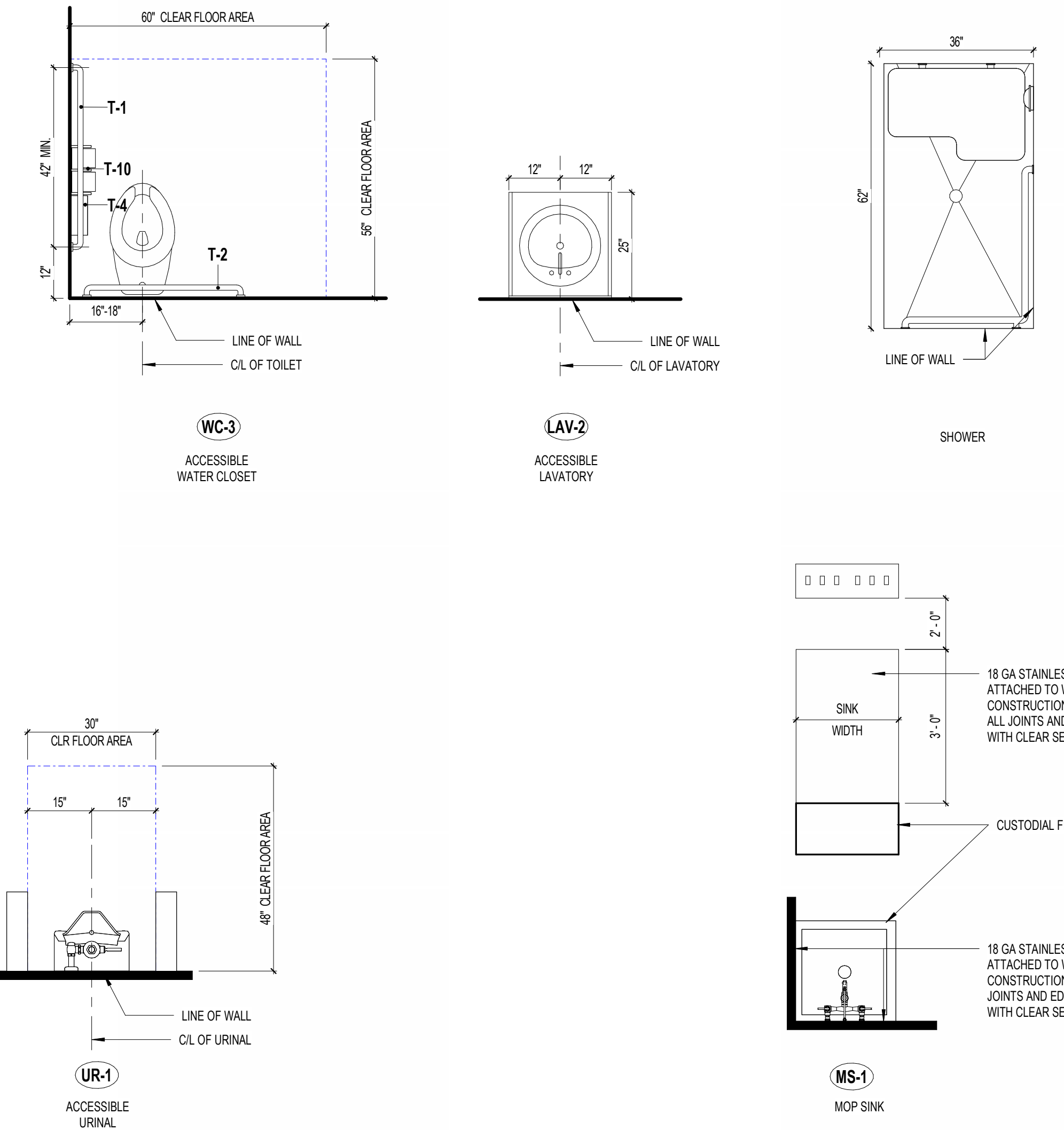
MARK	DESCRIPTION	MANUFACTURER	MODEL	MOUNTING HEIGHT	REMARKS
LAV-2	UNDER COUNTER MTD LAVATORY	REFER TO PLUMBING DRAWINGS		34" TO RIM	MIN. 29" AFF FOR KNEE CLEARANCE
MS-1	MOP SINK	REFER TO PLUMBING DRAWINGS	REFER TO PLUMBING DRAWINGS		PROVIDE S.S. WAINSCOT PANELS - SEE DIAGRAM BELOW
EW-1	ELECTRIC WATER COOLER	REFER TO PLUMBING DRAWINGS		38" MAX TO SPOUT OUTLET	
SH-1	TILE SHOWER, REFER TO SHEET A462 TOILET ROOM ELEVATIONS AND A160 FINISH SCHEDULE.	-	-	-	SHOWER TO INCLUDE GRAB BARS, FOLDING SHOWER SEAT, HAND HELD SHOWER ASSEMBLY WITH SIDE BAR, PRESSURE BALANCING AND MIXING VALVE, SOAP DISH.
WC-3	WALL MOUNTED TOILET	REFER TO PLUMBING DRAWINGS	REFER TO PLUMBING DRAWINGS	17" - 19" TO SEAT	
EM-1	ROUND MIRROR	ARTFOMA		SEE MOUNTING HEIGHT LEGEND	COLOR - BLACK

ACCESSORY MOUNTING HEIGHTS



TYPICAL FIXTURE CONFIGURATIONS

- NOTES
1. ALL TOILET ACCESSORIES SHOWN ARE DIAGRAMMATIC IN NATURE AND NOT INTENDED TO ACCURATELY REFLECT THE SPECIFIED PRODUCT. REFER TO TOILET ACCESSORY SCHEDULE AND SPECIFICATIONS.
 2. PLUMBING FIXTURES SHOWN ARE DIAGRAMMATIC IN NATURE AND NOT INTENDED TO ACCURATELY REFLECT THE SPECIFIED PRODUCT. REFER TO PLUMBING FIXTURE SCHEDULE.
 3. CONTRACTOR TO NOTIFY ARCHITECT OF ANY DISCREPANCIES IN THE REQUIRED INSTALLATION MOUNTING HEIGHTS AND CLEARANCES PRIOR TO INSTALLATION OF FIXTURES AND/OR ACCESSORIES.



HDg
Architecture
127 W. FAIRBANKS AVENUE, SUITE 140
WINTER PARK, FL 32789
(PH): 407-739-9000

SEAL

REVISIONS

MARK	DESCRIPTION	DATE
2	Internal Coordination (PEMB)	7/12/2024
3	BID RFI Responses	8/12/2024

KEY PLAN



SIGNATURE STEWART (SWF)
HANGAR

1188 1ST STREET, NEW WINDSOR, NY 12553

SIGNATURE AVIATION

SIGNATURE FLIGHT SUPPORT
13485 Veteran's Way Suite 600
Orlando, FL 32827

ISSUE DATE: 06/12/2024
COMM. NO.: 23715

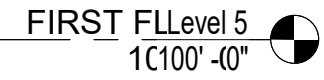
DRAWN BY: Author CHECKED BY: Checker

ENLARGED FLOOR PLANS -
TOILET

A461

100% PERMIT SET

GL-2: 45 MIN. FIRE RATED GLAZING



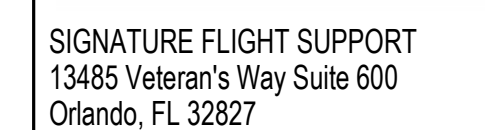
2

KEY PLAN

OFFICE

HANGAR

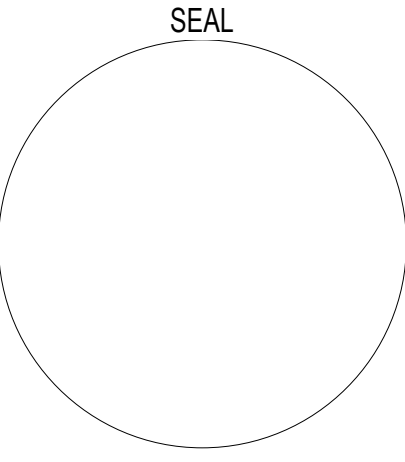
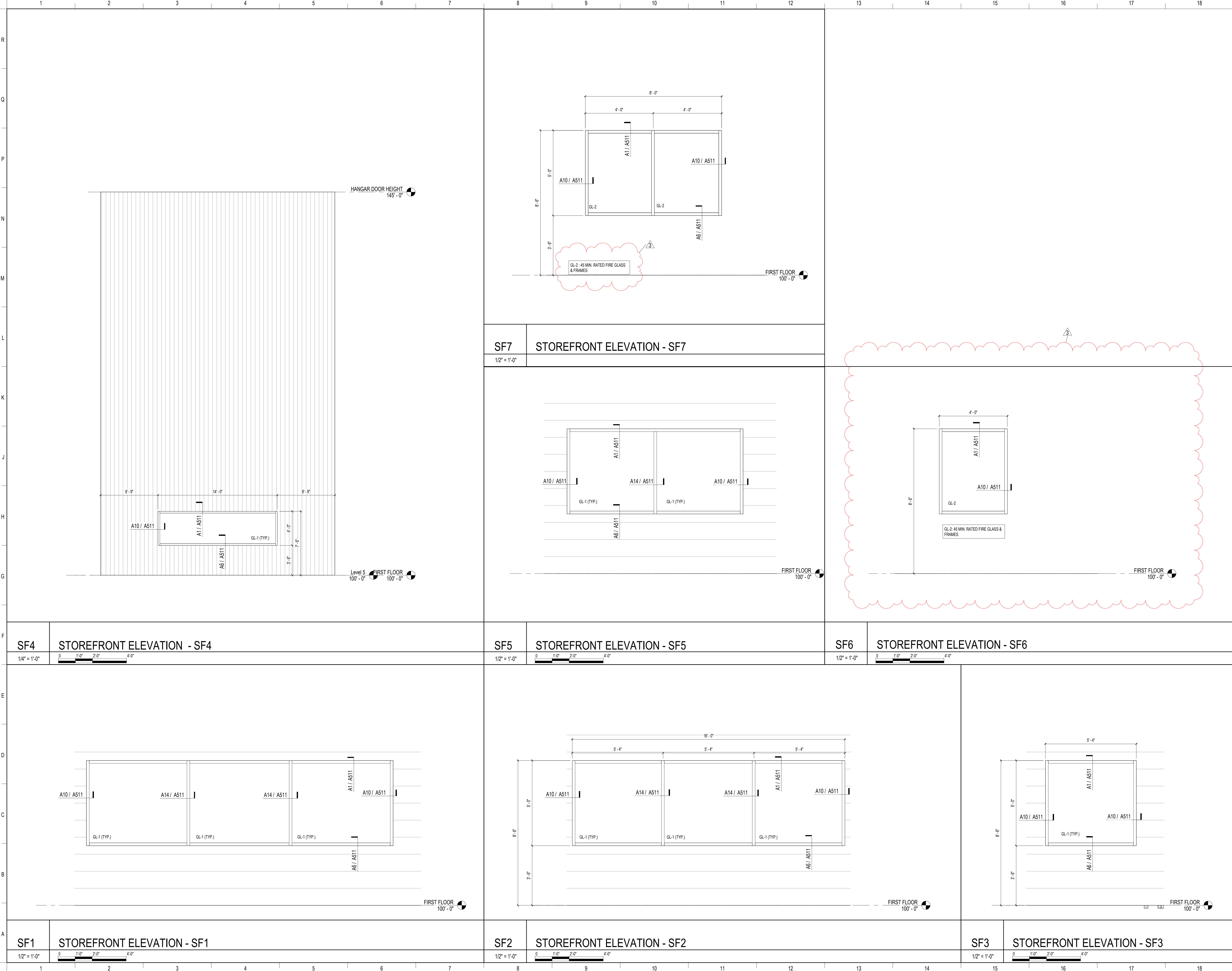
1188 1ST STREET, NEW WINDSOR, NY 12553



ISSUE DATE: 06/12/2024
COMM. NO.: 23715

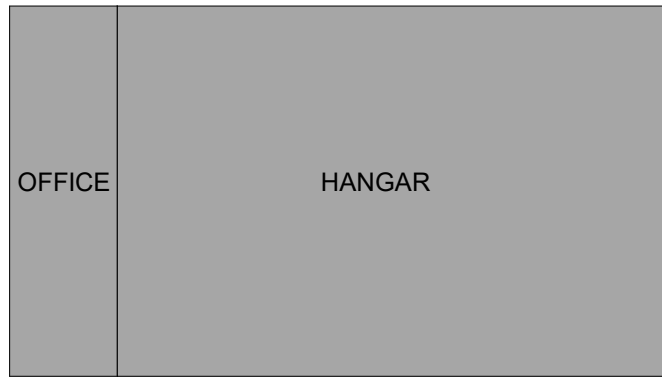
DOOR SCHEDULE, DOOR & FRAME TYPES

A500



REVISIONS		
MARK	DESCRIPTION	DATE
3	BID RFI Responses	8/12/2024

KEY PLAN



SIGNATURE STEWART (SWF)
HANGAR

1188 1ST STREET, NEW WINDSOR, NY 12553



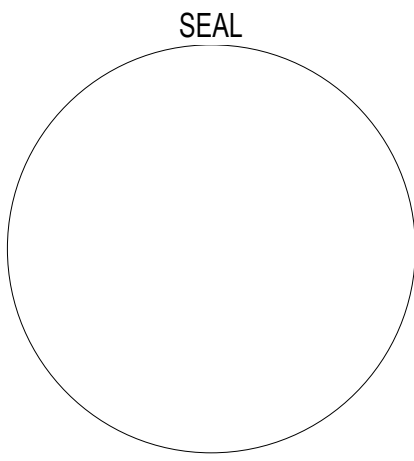
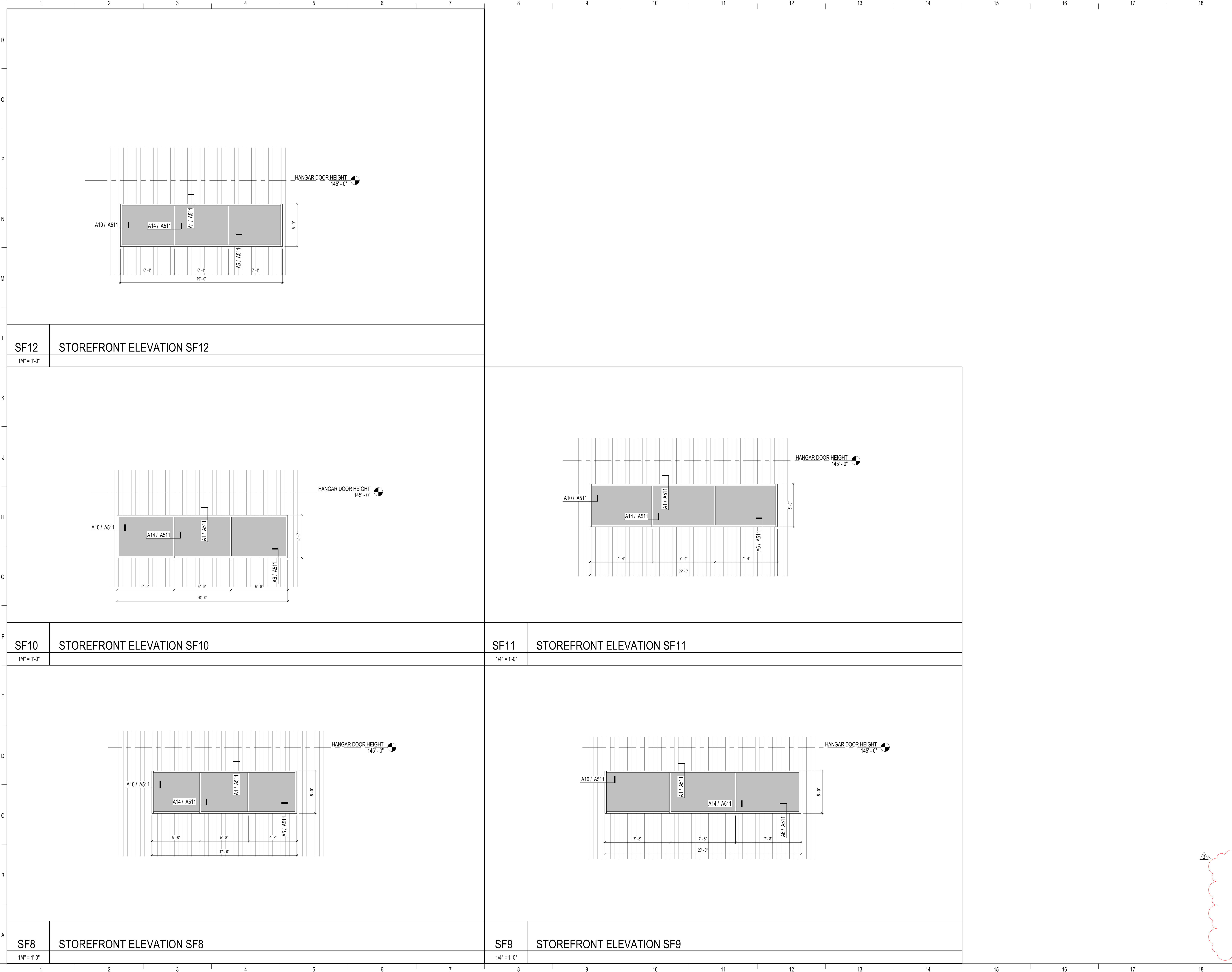
SIGNATURE FLIGHT SUPPORT
13485 Veteran's Way Suite 600
Orlando, FL 32827

ISSUE DATE: 06/12/2024
COMM. NO.: 23715

DRAWN BY: Author CHECKED BY: Checker

STOREFRONT ELEVATIONS

A501



REVISIONS		
MARK	DESCRIPTION	DATE
3	BID RFI Responses	8/12/2024

KEY PLAN



SIGNATURE STEWART (SWF)
HANGAR

1188 1ST STREET, NEW WINDSOR, NY 12553



SIGNATURE FLIGHT SUPPORT
13485 Veteran's Way Suite 600
Orlando, FL 32827

ISSUE DATE: 06/12/2024
COMM. NO.: 23715

DRAWN BY: Author CHECKED BY: Checker

STOREFRONT ELEVATIONS

A502