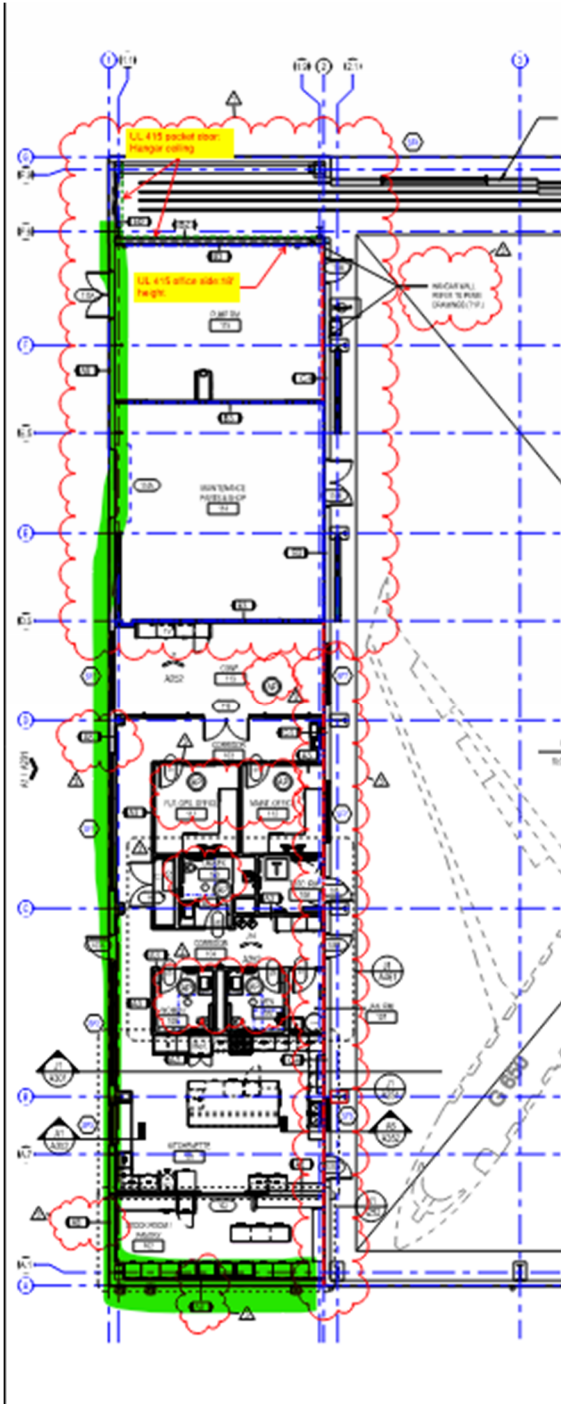


EXTERIOR OFFICE WALL PRICING TO BE ADDED

Can you please ask the contractors to price this exterior office wall in green?

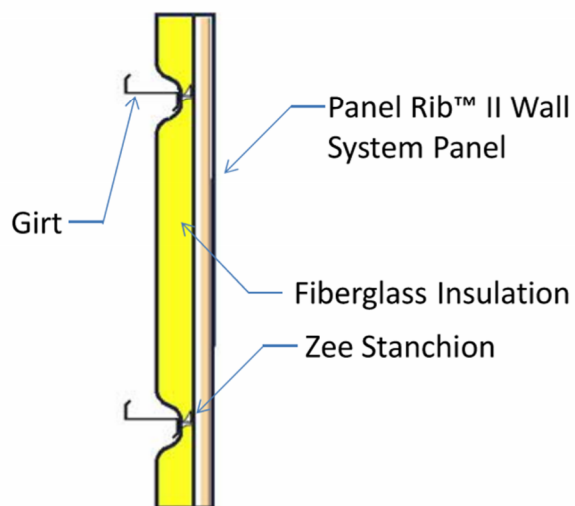
Please see below for two options.



1. All exterior walls at conditioned office/shops spaces to have R-6.5 continuous rigid insulation attached to thermally broken z clips, and additional R-20 batt insulation withing framing studs.

2.

U-Facts™ Assembly Snapshot



Panel Rib High R™ System
R-25 fiberglass insulation

U-Factor: 0.047 Btu/hr·ft²·°F