

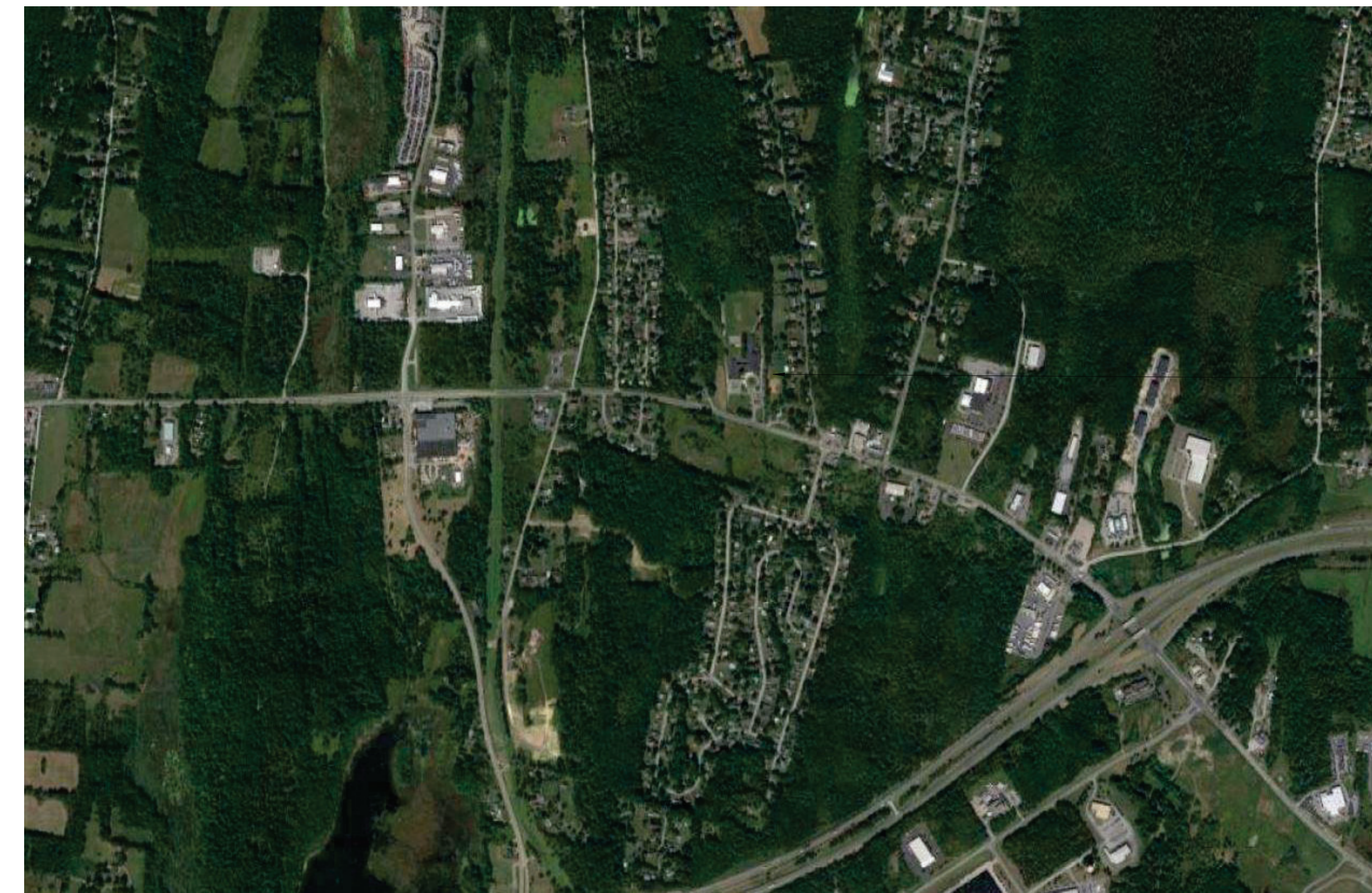
# VALLEY CENTRAL SCHOOL DISTRICT EAST COLDENHAM ELEMENTARY SCHOOL 2023 CAPITAL PROJECT - PHASE 1

ISSUED FOR BID: 10/18/24

CSARCH - ARCHITECTS  
BLAKE ENGINEERING, PLLC - M.E.P. ENGINEERS  
PASSERO ASSOCIATES - SITE/CIVIL AND STRUCTURAL ENGINEERS  
AECC ENVIRONMENTAL CONSULTING - HAZARDOUS MATERIALS DESIGNERS

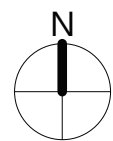
STATE EDUCATION DEPARTMENT PROJECT CONTROL NUMBER:  
2023 CAPITAL PROJECT - PHASE 1 44-13-01-06-0-013-019  
THE DESIGN OF THIS PROJECT CONFORMS TO APPLICABLE PROVISIONS OF THE NEW YORK STATE UNIFORM FIRE PREVENTION AND BUILDING CODE, THE NEW YORK STATE ENERGY CONSERVATION CONSTRUCTION CODE, AND THE MANUAL OF PLANNING STANDARDS OF THE NEW YORK STATE EDUCATION DEPARTMENT.

CSArch PROJECT NO. 187-2302.01



VICINITY MAP

NTS

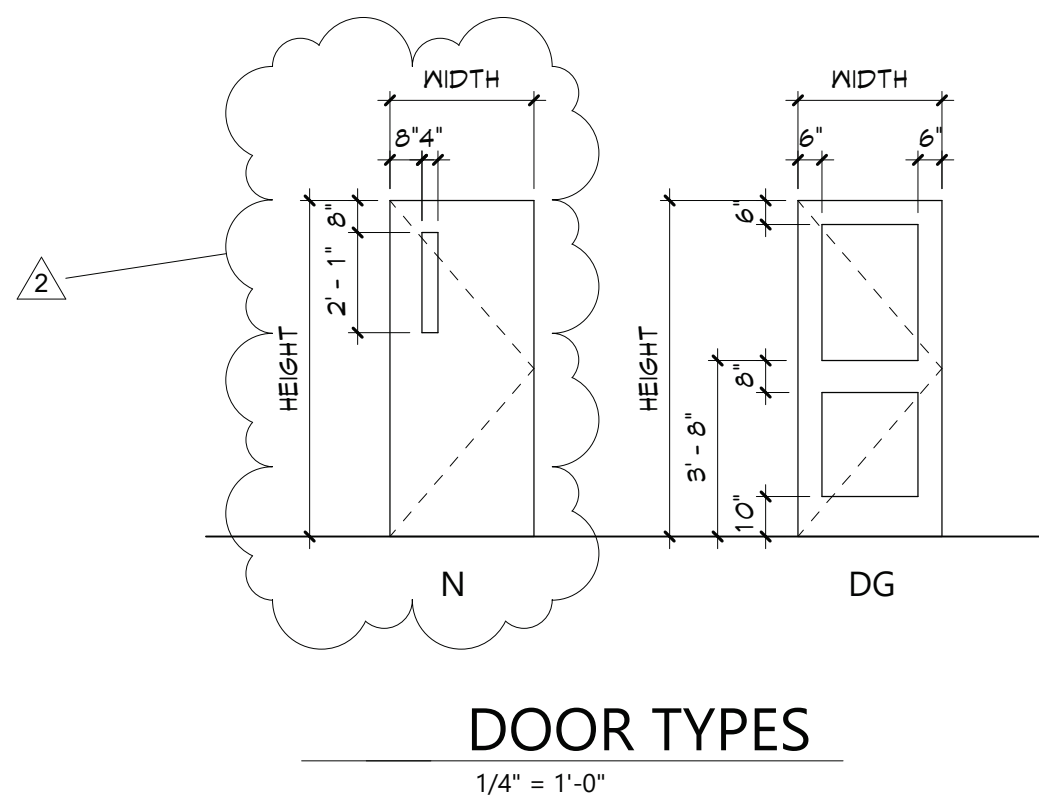


DRAWING LIST	
<b>GENERAL DRAWINGS</b>	
ECES G000	COVER & SHEET INDEX
ECES G001	SYMBOLS, ABBREVIATIONS, MISC. AND PARTITION TYPES
ECES G111	OVERALL FLOOR PLAN - FIRST FLOOR
<b>LIFE SAFETY DRAWINGS</b>	
ECES LS111	LIFE SAFETY PLAN - FIRST FLOOR
ECES LS112	SMOKE ZONE PLANS
<b>ARCHITECTURAL DEMOLITION DRAWINGS</b>	
ECES AD111	ENLARGED REMOVAL PLAN AND RCP
<b>ARCHITECTURAL DRAWINGS</b>	
ECES A111	ENLARGED FLOOR PLAN, RCP, AND DETAILS
ECES A201	EXTERIOR ELEVATIONS
ECES A202	EXTERIOR ELEVATIONS
ECES A901	DOOR, WINDOW, & STOREFRONT DETAILS
<b>ARCHITECTURAL FINISH DRAWINGS</b>	
AF001	SIGNAGE TYPES AND SCHEDULE
<b>MECHANICAL GENERAL DRAWINGS</b>	
ECES M001	MECHANICAL NOTES, LEGENDS, SCHEDULES & DETAILS
<b>MECHANICAL DEMOLITION DRAWINGS</b>	
ECES MD111	MECHANICAL DEMOLITION PLAN
<b>MECHANICAL DRAWINGS</b>	
ECES M111	MECHANICAL PLAN
<b>ELECTRICAL GENERAL DRAWINGS</b>	
ECES E001	ELECTRICAL NOTES, LEGENDS, DETAILS & SCHEDULES
<b>ELECTRICAL DEMOLITION DRAWINGS</b>	
ECES ED111	ELECTRICAL DEMOLITION PLAN
<b>ELECTRICAL DRAWINGS</b>	
ECES E111	ELECTRICAL PLAN



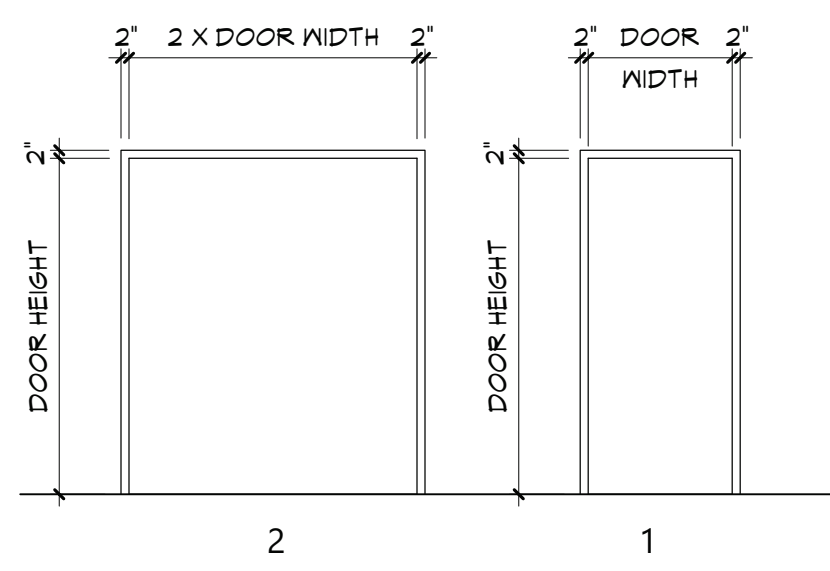
EXPIRATION DATE: 02/28/2025





DOOR TYPES

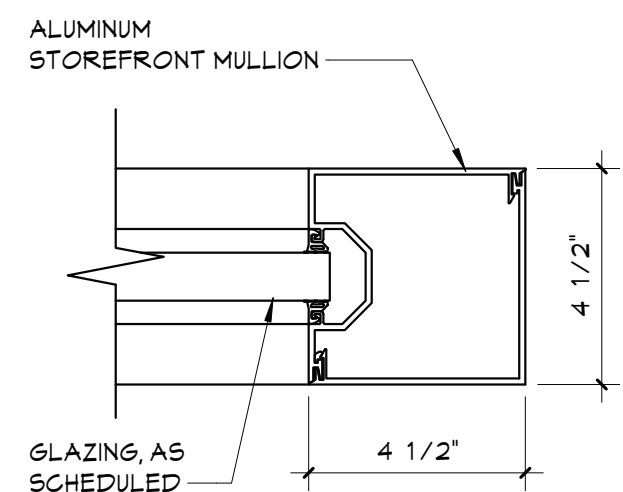
1/4" = 1'-0"



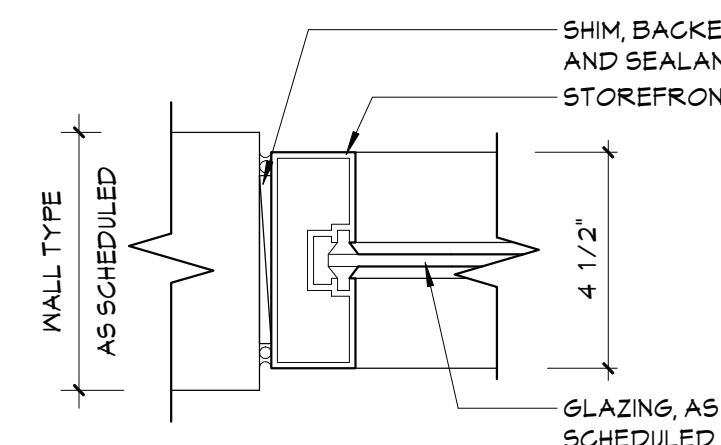
DOOR FRAME TYPES

1/4" = 1'-0"

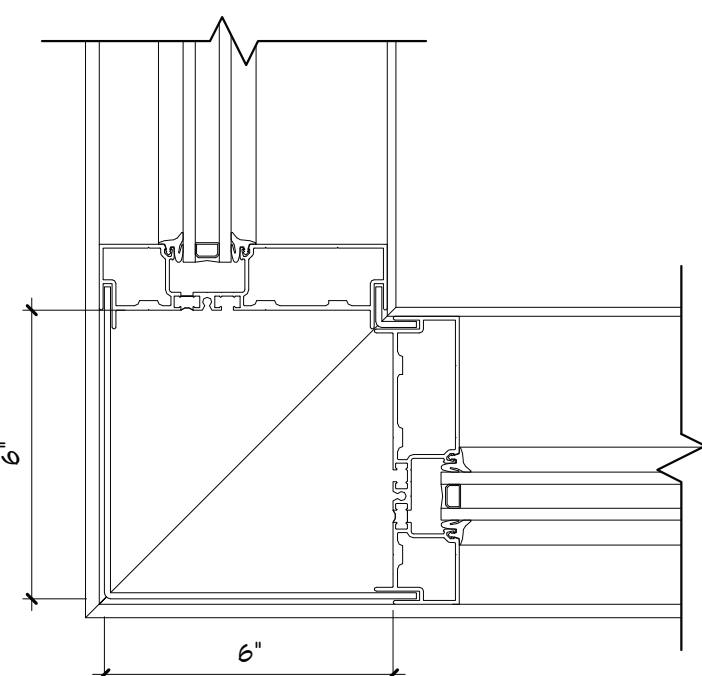
DOOR SCHEDULE																			
DOOR NUMBER	QUANTITY	FROM		TO	DOOR			TYPE	MATERIAL	FINISH	FRAME		LABEL (MIN)	GLAZING	HARDWARE	MAG HOLD-OPEN	ACCESS CONTROL	REMARKS	DOOR NUMBER
					WIDTH	HEIGHT	THICKNESS				MATERIAL	FINISH							
001				100	SECURITY VESTIBULE	3' - 0"	7' - 0"	1 3/4"	DG	ALUM	ANOD	ALUM	ANOD	7	HW1				001
002				101	VESTIBULE	3' - 0"	7' - 0"	1 3/4"	DG	ALUM	ANOD	ALUM	ANOD	7	HW2				002
003				101	VESTIBULE	3' - 0"	7' - 0"	1 3/4"	DG	ALUM	ANOD	ALUM	ANOD	7	HW1				003
004	101	VESTIBULE		102	LOBBY	3' - 0"	7' - 0"	1 3/4"	DG	ALUM	ANOD	ALUM	ANOD	4	HW1				004
005	101	VESTIBULE		102	LOBBY	3' - 0"	7' - 0"	1 3/4"	DG	ALUM	ANOD	ALUM	ANOD	4	HW2				005
006	100	SECURITY VESTIBULE		103	MAIN OFFICE	3' - 0"	7' - 0"	1 3/4"	N	ANOD	ANOD	ANOD	ANOD	20	HW4				006
007	102	LOBBY		103	MAIN OFFICE	3' - 0"	6' - 10"	1 3/4"	N	ANOD	ANOD	ANOD	ANOD	20	HW6				007



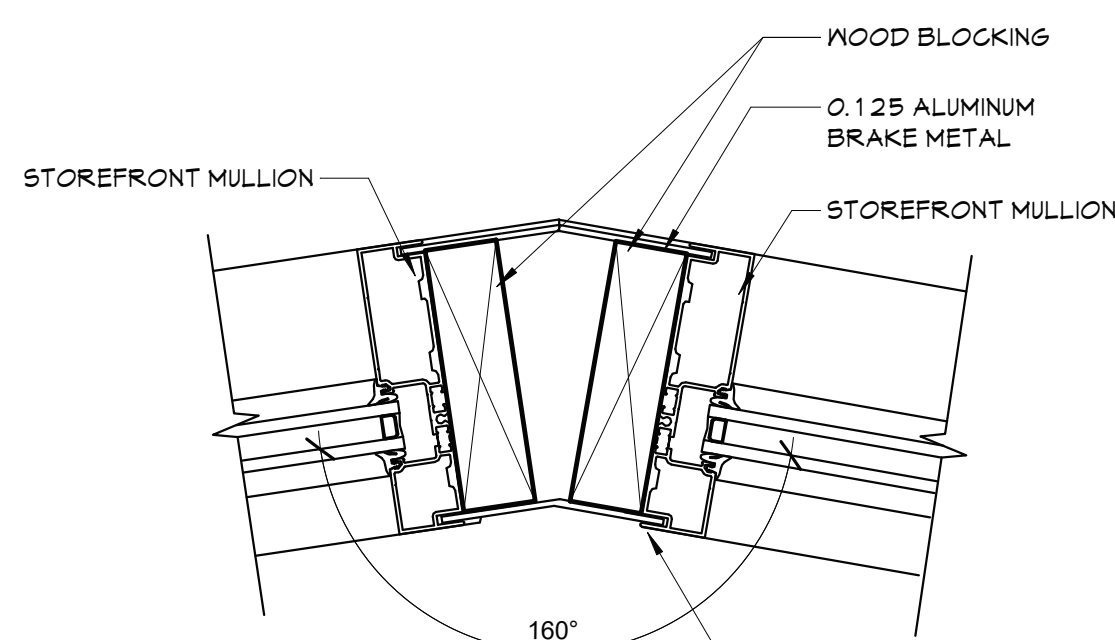
13 JAMB  
A901 3" = 1'-0"



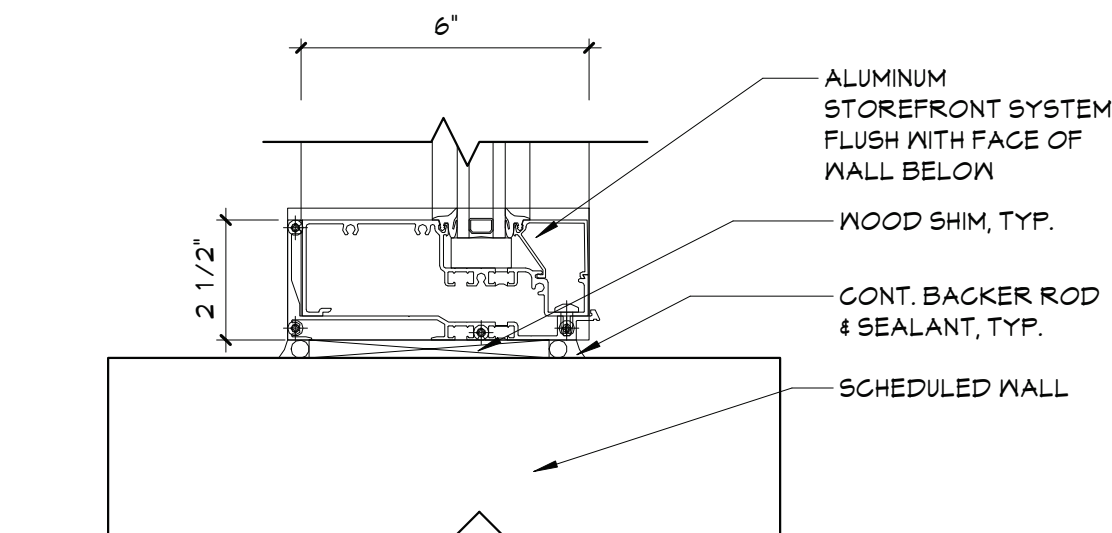
12 JAMB  
A901 3" = 1'-0"



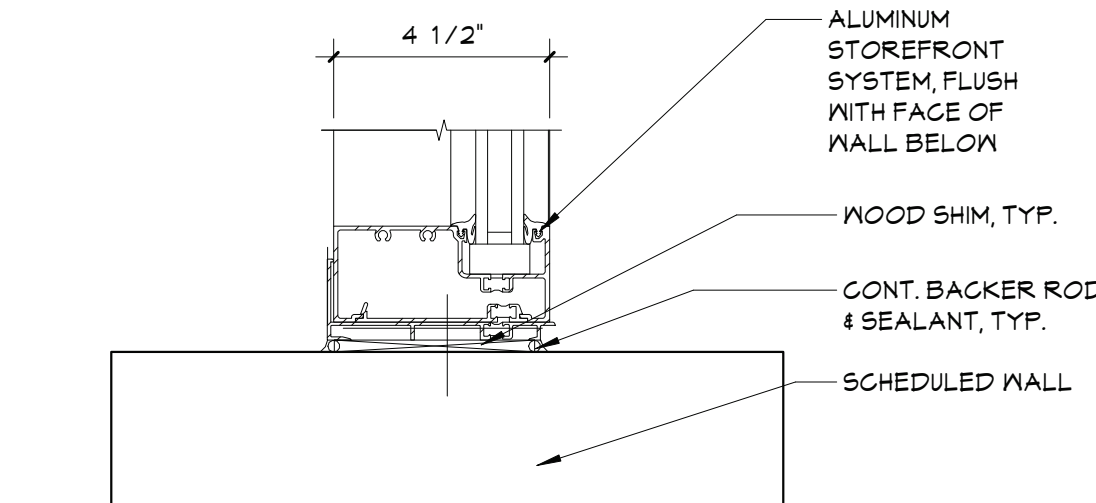
11 CORNER DETAIL  
A901 3" = 1'-0"



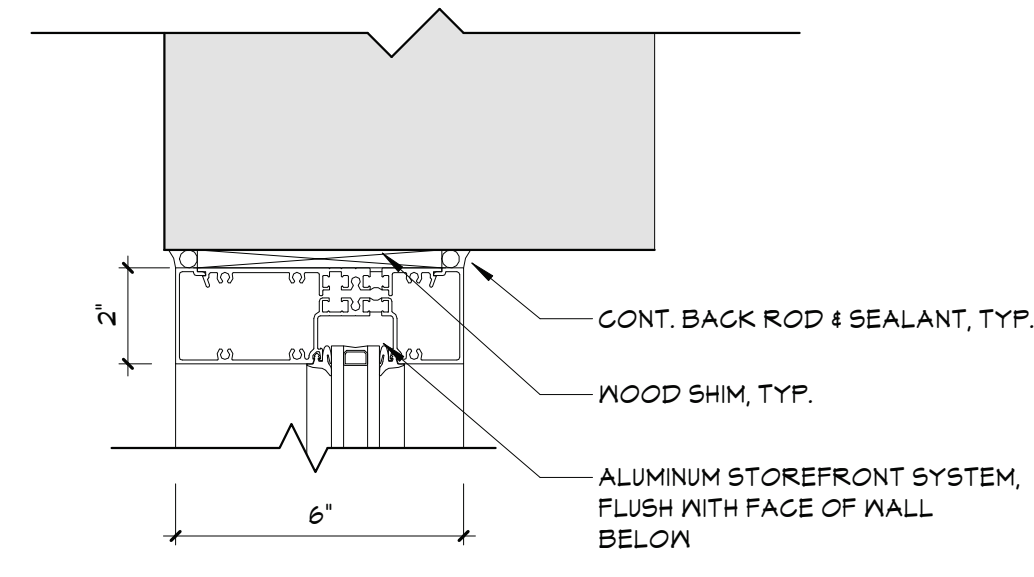
10 ANGLE MULLION DETAIL  
A901 3" = 1'-0"



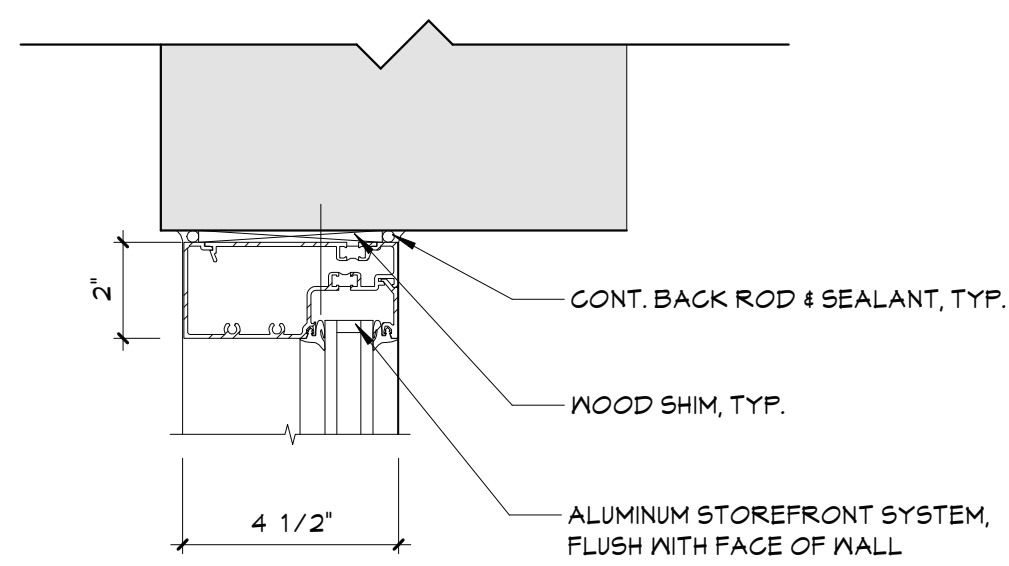
9 SILL DETAIL  
A901 3" = 1'-0"



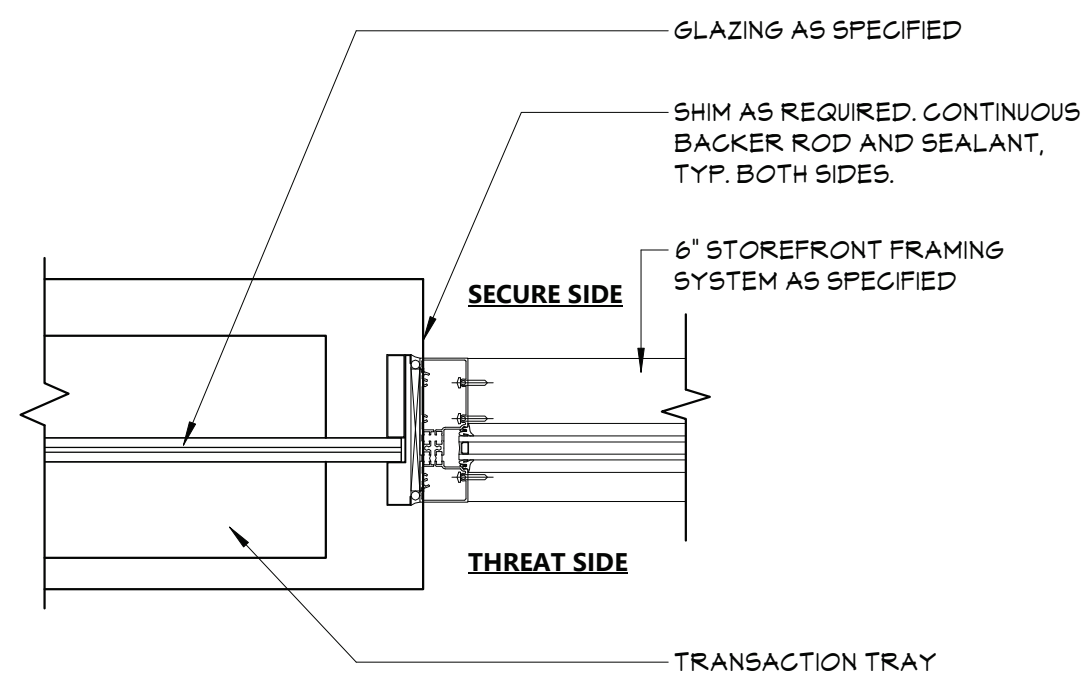
8 SILL DETAIL  
A901 3" = 1'-0"



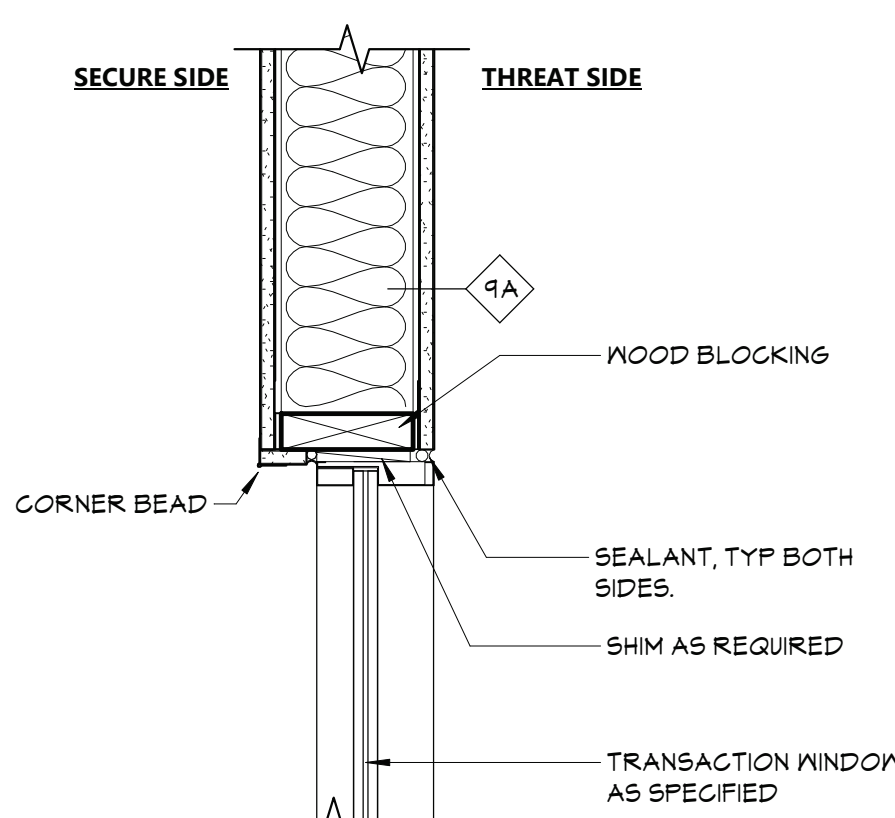
7 HEAD DETAIL  
A901 3" = 1'-0"



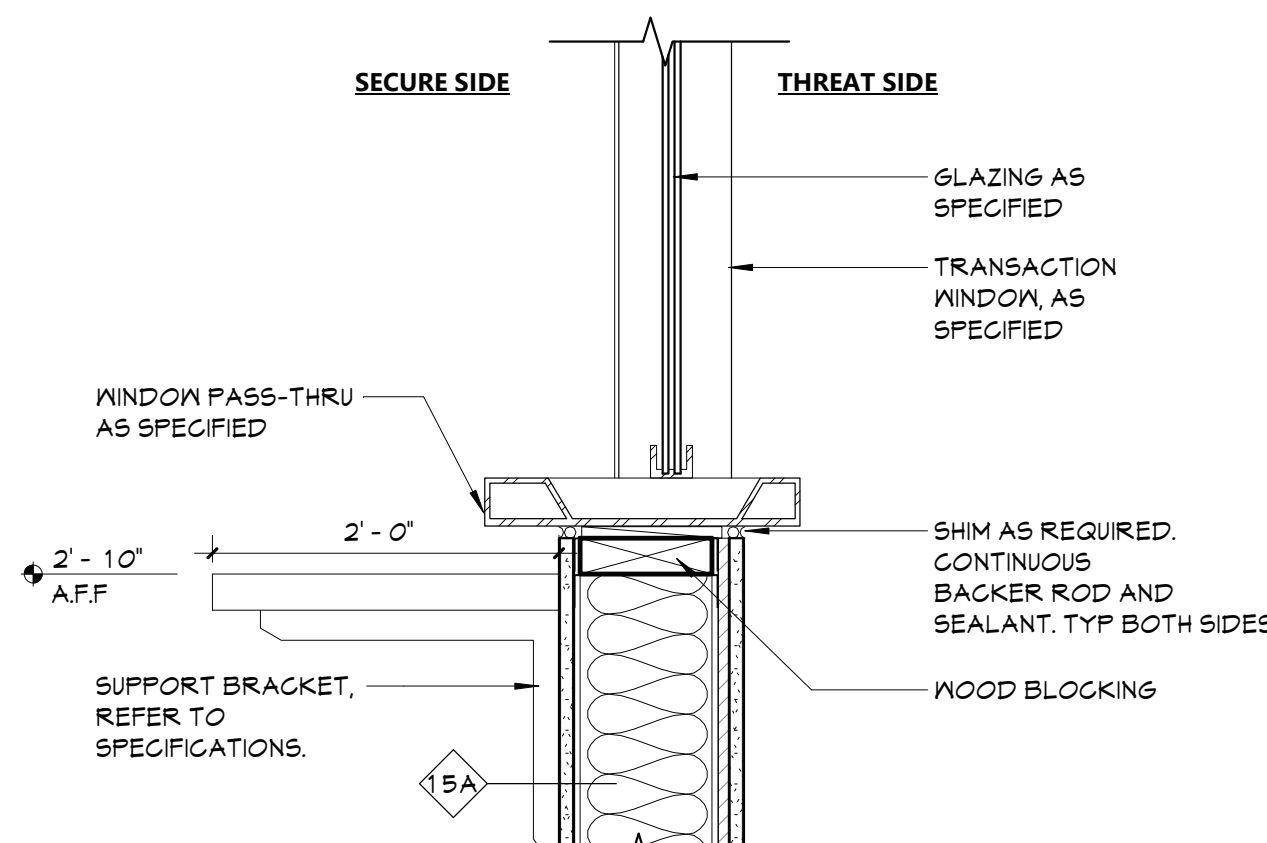
6 HEAD DETAIL  
A901 3" = 1'-0"



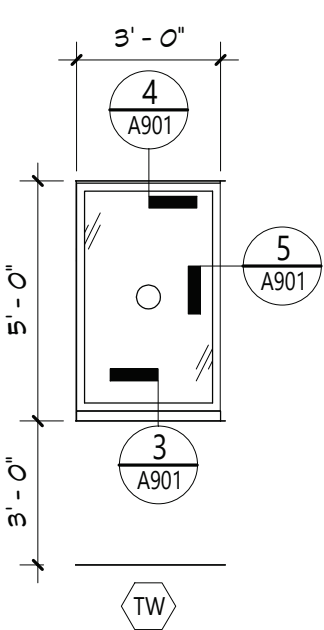
5 JAMB DETAIL - SECURITY WINDOW  
A901 1 1/2" = 1'-0"



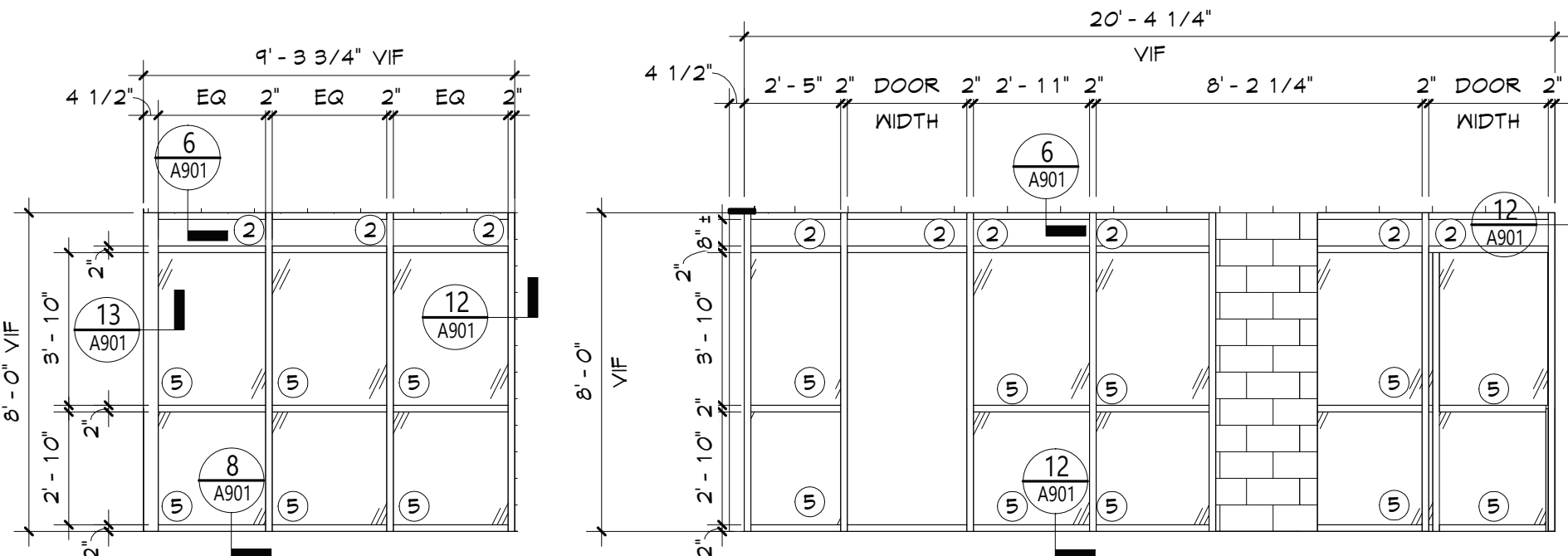
4 HEAD DETAIL - SECURITY WINDOW  
A901 1 1/2" = 1'-0"



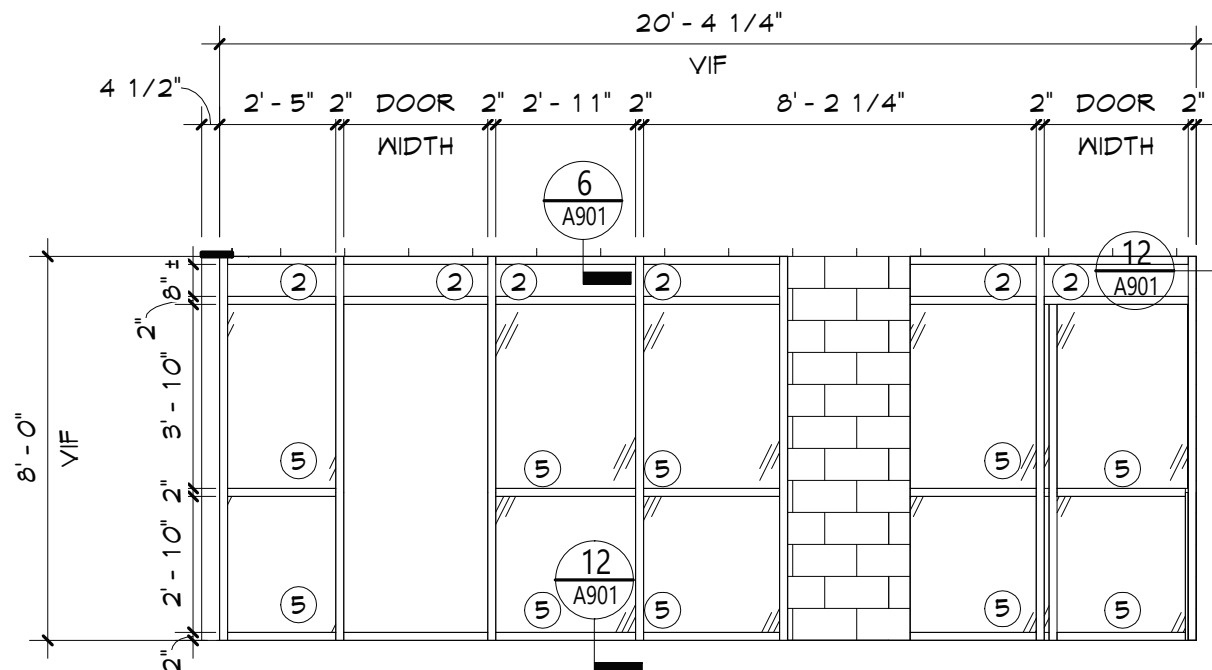
3 SILL DETAIL - SECURITY WINDOW  
A901 1 1/2" = 1'-0"



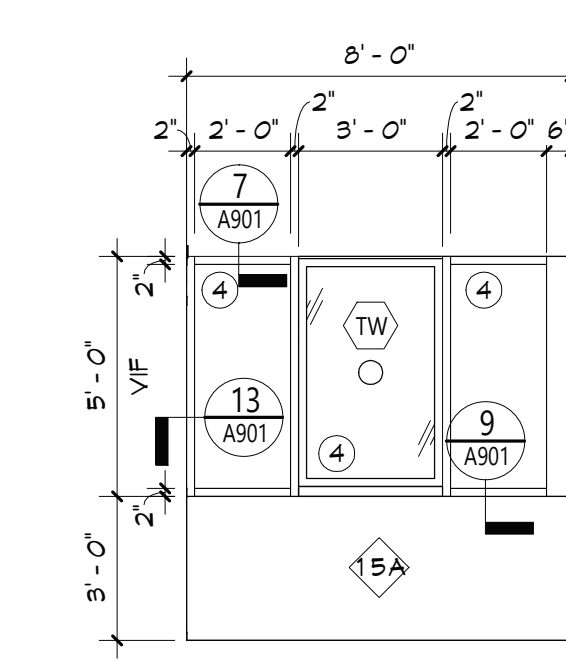
2 TRANSACTION WINDOW  
A901 1/4" = 1'-0"



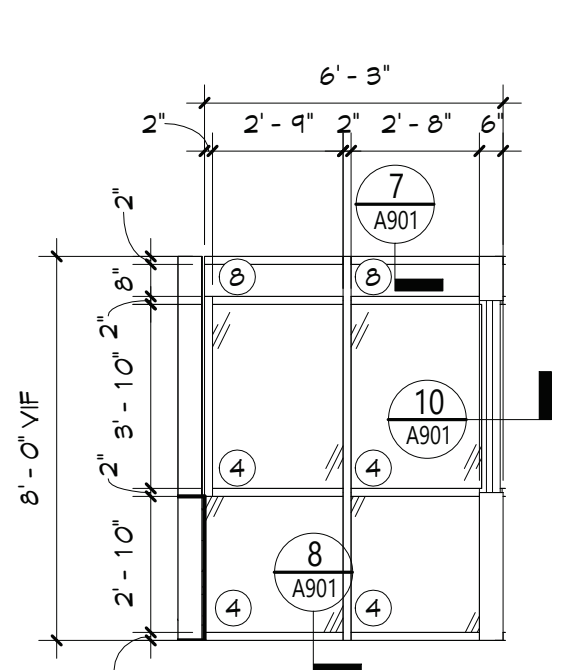
S7



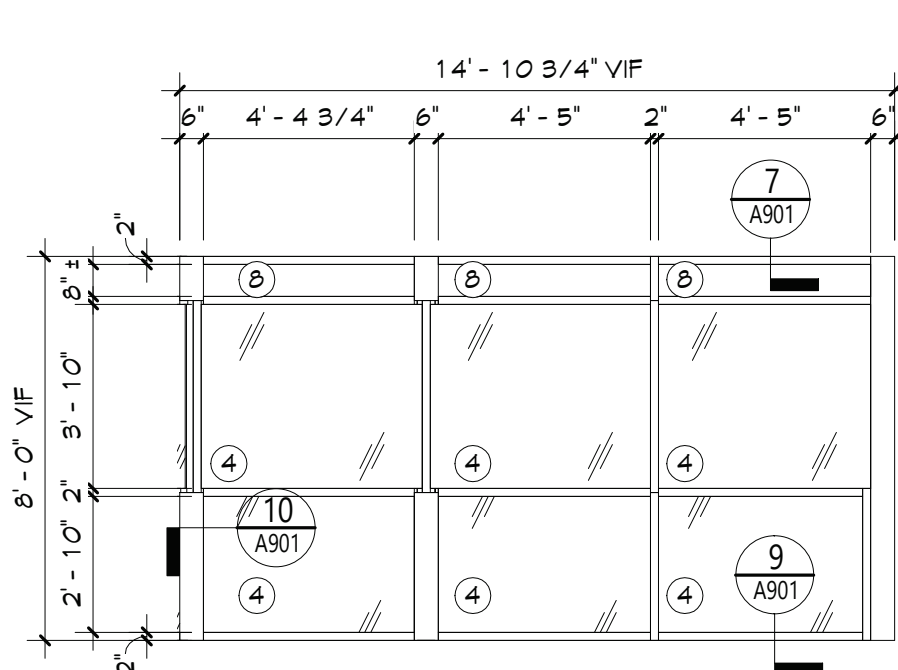
S6



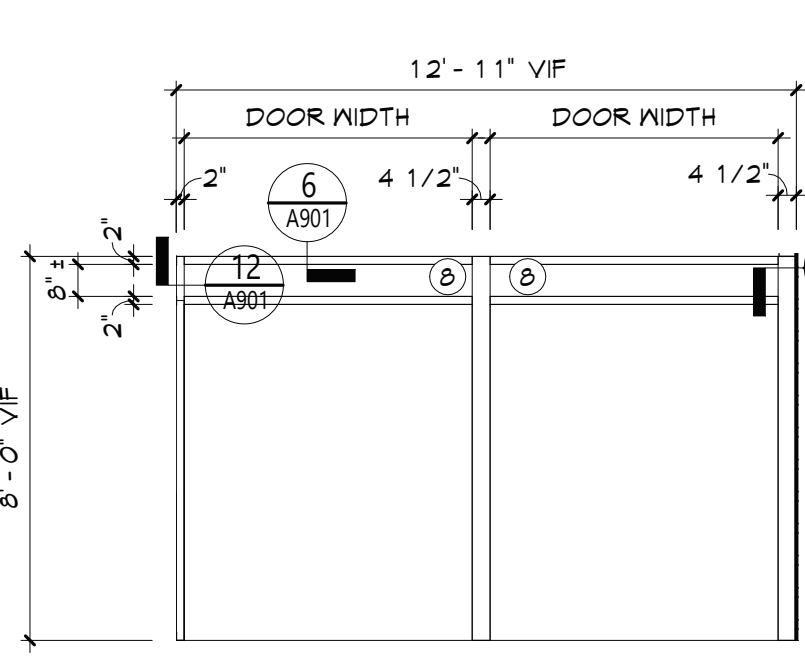
S5



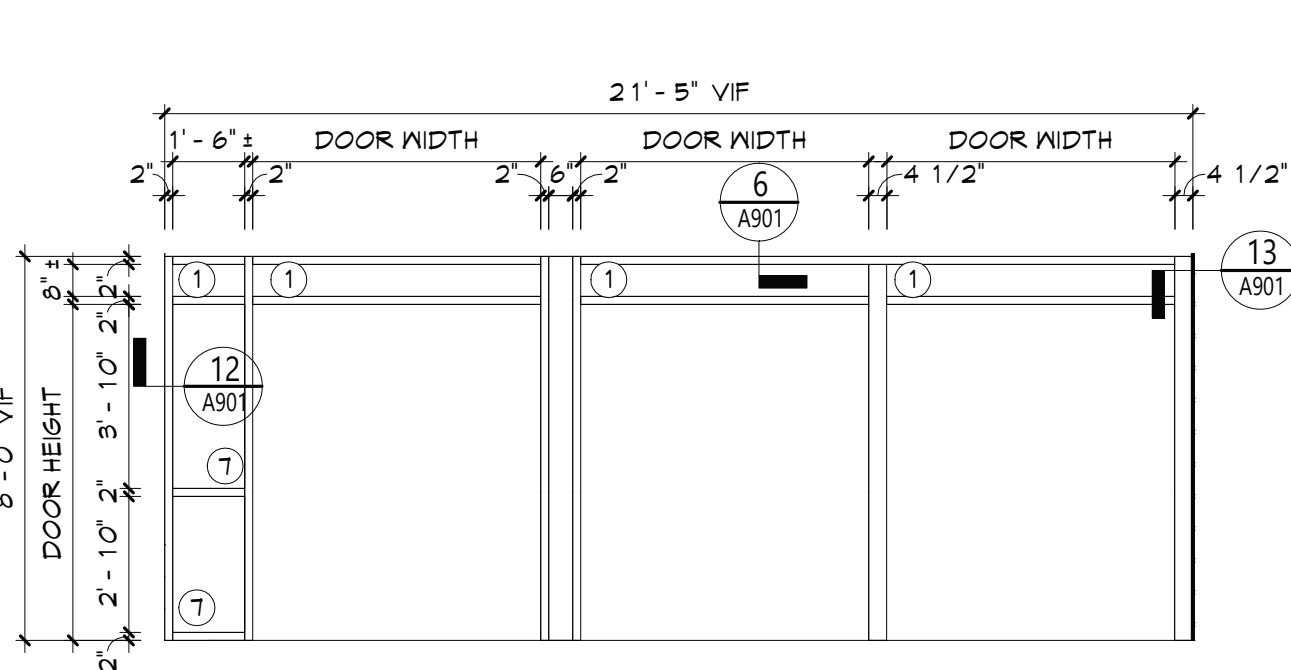
S4



S3



S2



S1

1 STOREFRONT ELEVATIONS  
A901 1/4" = 1'-0"

DOOR LITE, GLAZING & PANEL TYPES

- INSULATED GLAZING UNIT (IGU)
- FIRE-PROTECTION-RATED GLAZING. MATCH RATINGS OF OPENING EXISTING. CORRIDOR WALLS ARE PRESUMED 1-HOUR RATED, U.N.O. (FR)
- INSULATED SECURITY GLAZING UNIT (ISA)
- SECURITY GLAZING (SA)
- FIRE-PROTECTION-RATED SECURITY GLAZING. RATING BASED ON WALL OR DOOR RATING (FRBA)
- INSULATED LAMINATED/TEMPERED GLASS (EXTERIOR)
- SECURITY FILM ON INSULATED GLAZING UNIT
- LAMINATED GLASS (LM)
- SAFETY GLAZING (SG)
- FIRE-PROTECTION RATED INSULATED GLAZING UNIT (FGGL)

LEGEND

SH STOREFRONT LABEL

X WINDOW TAG

STOREFRONT NOTES

- GLAZING SYSTEMS TO BE FIRE RATED TO MATCH FIRE RATINGS OF SCHEDULED DOORS. REFER TO DOOR SCHEDULE FOR FIRE RATINGS.
- STOREFRONT FRAMING SYSTEM TO BE FIRE RATED TO MATCH FIRE RATINGS OF SCHEDULED GLAZING SYSTEMS. REFER TO STOREFRONT ELEVATIONS FOR GLAZING TYPES.

19 From St. Newburgh - New York 15507-001  
645-561-3179 www.csarch.com

Consultant

VALLEY CENTRAL SCHOOL DISTRICT  
EAST COLDENHAM ELEMENTARY SCHOOL  
2023 CAPITAL PROJECT - PHASE 1

Project Title



EXPIRATION DATE: 02/28/2025

NO.	DATE	DESCRIPTION
1	11/1/2024	REV ADDENDUM #1
2	10/15/2024	REV ADDENDUM #2

Drawn By: AL  
Checked By: EAB  
Proj. #: 44-13-01-86-0-013-019  
CSArch Proj. #: 187-2302-01  
Issued for Bid: 10/18/24

Sheet Title  
DOOR,  
WINDOW, &  
STOREFRONT  
DETAILS

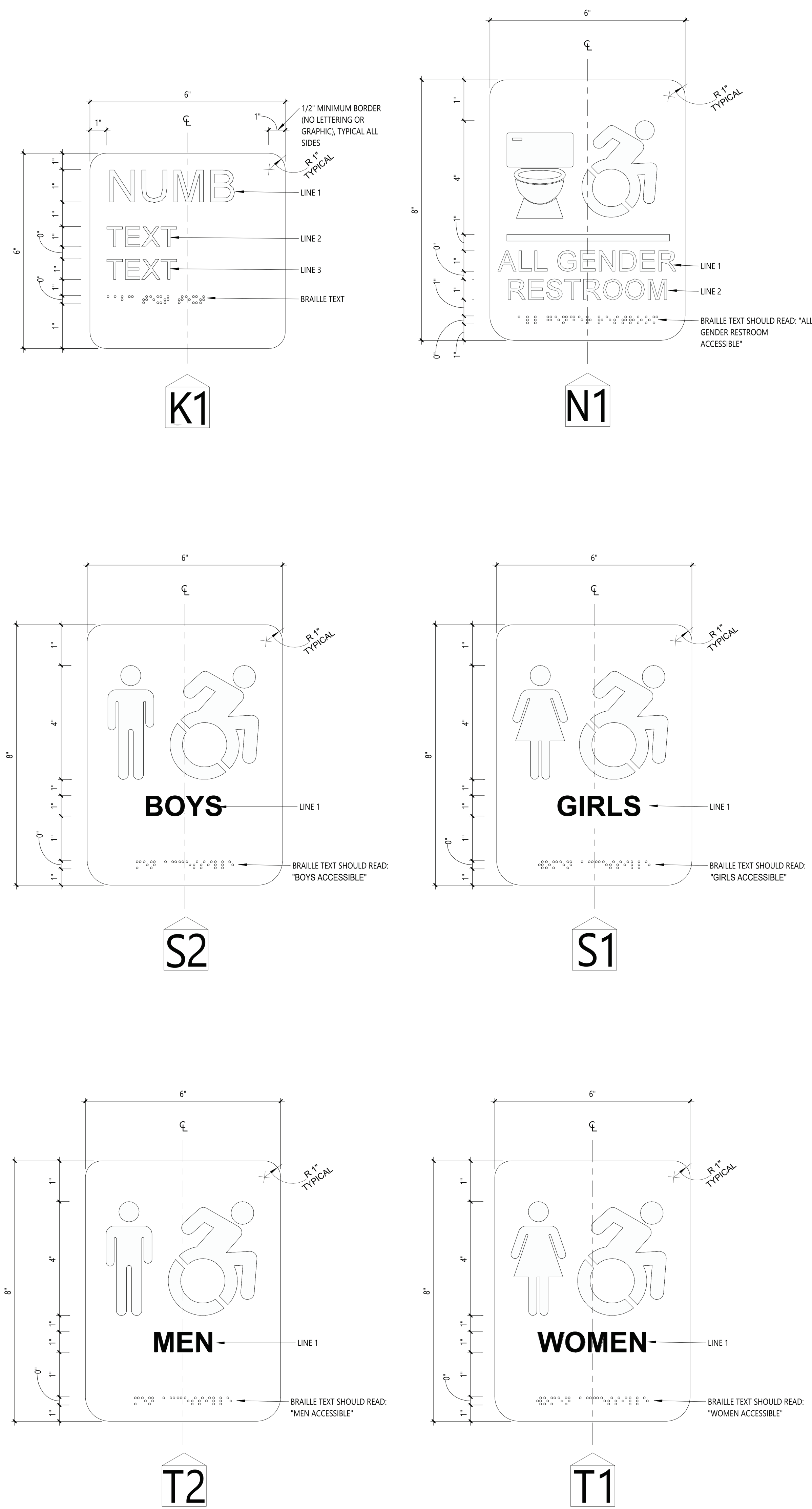
Sheet No.  
ECES  
A901

CONSTRUCTION DOCUMENTS

COPYRIGHT © ALL RIGHTS RESERVED

ROOM SIGNAGE SCHEDULE				
ROOM NUMBER	ROOM NAME	SIGNAGE TYPE	QUANTITY	REMARKS
100	SECURITY VESTIBULE	K1	1	FIRST FLOOR
101	VESTIBULE	K1	1	FIRST FLOOR
102	LOBBY	K1	2	FIRST FLOOR
103	MAIN OFFICE	K1	2	FIRST FLOOR

**NOTES:**  
1) REFER TO PANEL SIGNAGE ELEVATIONS FOR SIGNAGE TYPES.  
2) REFER TO SPECIFICATION SECTION 101423 - "INTERIOR PANEL SIGNAGE" FOR ADDITIONAL INFORMATION.  
3) ALL EXISTING PANEL SIGNAGE FOR ROOMS NOTED ABOVE SHALL BE REMOVED AND REPLACED WITH NEW.  
4) FINAL NUMBERING AND NAMING OF ROOMS TO BE DETERMINED BY OWNER DURING THE SUBMITTAL AND SHOP DRAWING REVIEW.



# 1 PANEL SIGNAGE ELEVATIONS

AF001 1/4" = 1'-0"

19 Front St., Newburgh, New York 12550-7601  
845.561.3379 www.csarchpcc.com

CSARCH

Consultant

VALLEY CENTRAL SCHOOL DISTRICT  
EAST COLDENHAM ELEMENTARY SCHOOL  
2023 CAPITAL PROJECT - PHASE 1

Project Title

EXPIRATION DATE: 02/28/2025

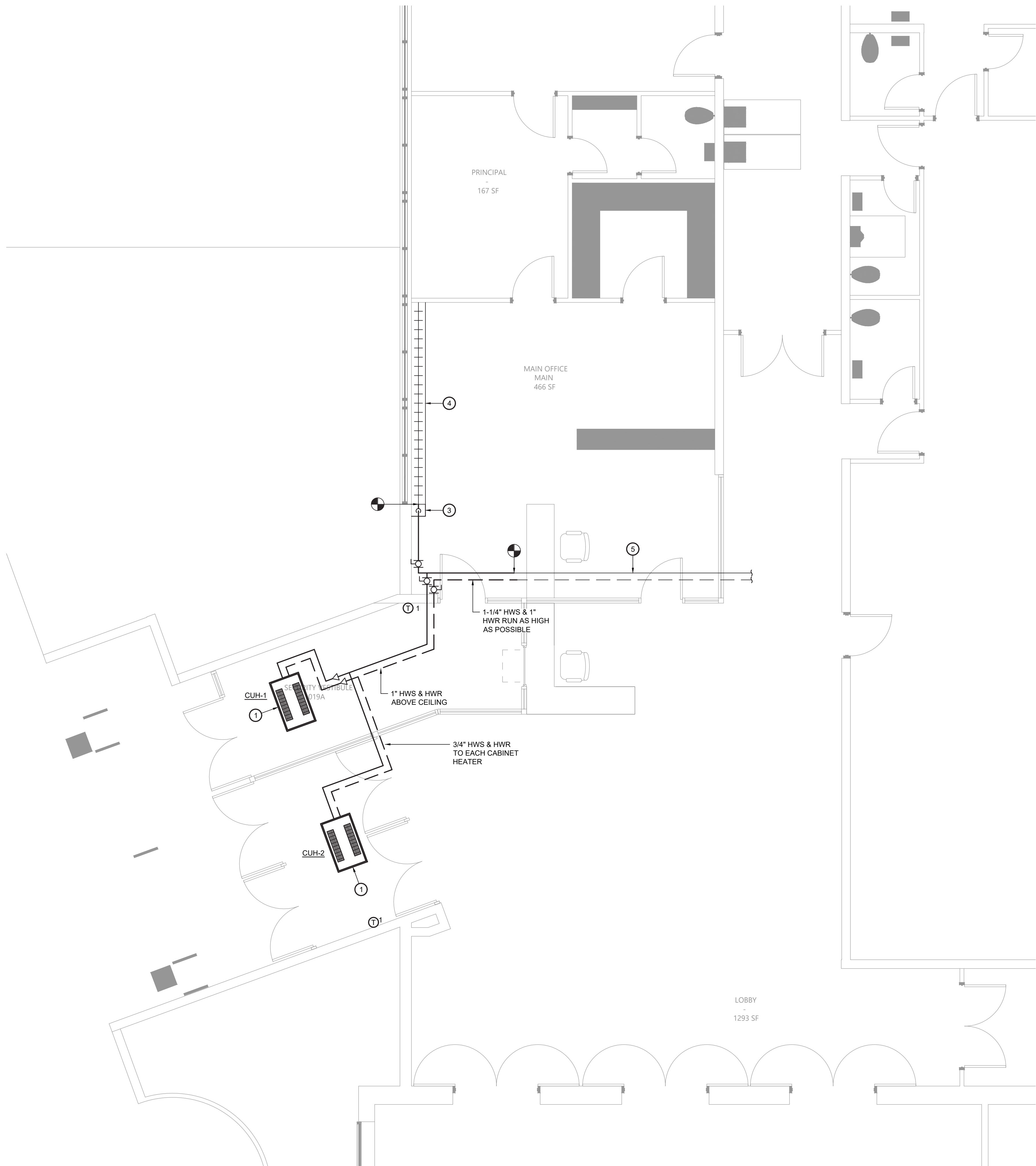
2	11/1/24	BID ADDENDUM #1
1	DATE	DESCRIPTION

Drawn By: CSA  
Checked By: CSA  
Proj. #: 44-13-01-86-0-013-019  
CSArch Proj. #: 187-2302.01  
Issued for Bid: 3/8/18/24

Sheet Title  
SIGNAGE TYPES AND SCHEDULE

Sheet No.  
ECES  
AF001  
CONSTRUCTION DOCUMENTS





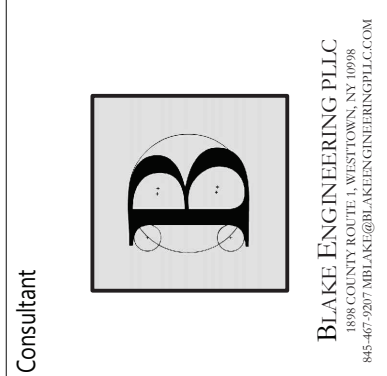
1 Mechanical Plan  
M111 Scale: 1/4" = 1'-0"

Key Notes:

1. INSTALL CEILING MOUNTED CABINET UNIT HEATER IN NEW VESTIBULE; CONNECT TO HOT WATER PIPING & CONTROLS
2. CONNECT TO EXISTING HOT WATER PIPING & EXTEND NEW PIPING TO NEW UNIT HEATERS & EXISTING FINNED TUBE
3. PROVIDE POWDER COATED METAL PIPING ENCLOSURE ALONG WALL W/ 1-1/4" HWS PIPING DN. TO EXISTING FINNED TUBE
4. EXISTING FINNED TUBE RADIATION TO REMAIN; DISCONNECT HOT WATER PIPING & RECONNECT AFTER BEING RELOCATED TO AVOID CONFLICT WITH NEW DOOR OPENING
5. EXISTING HOT WATER SUPPLY & RETURN PIPING ABOVE CEILING TO REMAIN

DDC Temperature Control Notes:

1. HVAC CONTROLS SHALL BE FURNISHED & INSTALLED BY THE OWNER TO MATCH THE EXISTING BUILDING AUTOMATION SYSTEM IN EACH BUILDING (FRANE AT EAST COLDENHAM ELEMENTARY). ALL HARDWARE, WIRING AND PROGRAMMING TO BE PROVIDED BY OWNER. MECHANICAL CONTRACTOR IS RESPONSIBLE FOR COORDINATING WITH THE OWNER'S VENDOR THROUGHOUT THE PROJECT TO SUPPORT INSTALLATION, TESTING AND COMMISSIONING. MECHANICAL CONTRACTOR TO INSTALL ALL DEVICES MOUNTED IN OR ON THE PIPING AND/OR DUCTWORK INCLUDING BUT NOT LIMITED TO HYDRONIC CONTROL VALVES, TEMPERATURE SENSORS, FLOW SENSORS, ETC. MECHANICAL CONTRACTOR TO PROVIDE ALL NECESSARY PORTS/THERMOWELLS FOR SENSORS, GAUGES, ETC. COORDINATE WITH OWNER'S VENDOR FOR QUANTITY AND LOCATIONS.
2. OWNER SHALL EXPAND EXISTING BUILDING AUTOMATION SYSTEM TO PROVIDE THE CONTROL SEQUENCES SPECIFIED ON THE DRAWINGS AND IN THE SPECIFICATIONS. THE SYSTEM SHALL PROVIDE CONTROL AND MONITORING OF THE EQUIPMENT INDICATED.
3. OWNER SHALL PROVIDE CONTROLLERS AND COMMUNICATIONS INFRASTRUCTURE TO MATCH EXISTING CAMPUS-WIDE BUILDING AUTOMATION SYSTEM. PROVIDE SEAMLESS INTEGRATION WITH EXISTING CONTROL NETWORK AND USER INTERFACES. NETWORK GATEWAYS AND PROTOCOL INTERFACE EQUIPMENT ARE NOT ACCEPTABLE UNLESS OTHERWISE NOTED.
4. OWNER SHALL PROVIDE INSTRUMENTATION, SENSORS, VALVES, DAMPERS, ACTUATORS AND WIRING AS REQUIRED TO PROVIDE SPECIFIED OPERATING SEQUENCES.
5. OWNER SHALL MODIFY EXISTING GRAPHIC USER INTERFACES TO INCLUDE ALL EQUIPMENT AND SYSTEMS INCLUDED IN THIS PROJECT.
6. OWNER SHALL REPLACE THE EXISTING BAS SERVER HARDWARE AND UPGRADE THE SOFTWARE TO THE LATEST VERSION OF WEB-ENABLED GRAPHICAL USER INTERFACE WITH A SEAMLESS INTEGRATION OF THE NEW AND EXISTING CONTROL POINTS.
7. OWNER SHALL BE RESPONSIBLE FOR POWER THAT IS NOT SHOWN ON THE ELECTRICAL DRAWINGS. TO CONTROLS FURNISHED BY THIS CONTRACTOR. IF POWER CIRCUITS ARE SHOWN ON THE ELECTRICAL DRAWINGS, OWNER SHALL CONTINUE THE POWER RUN TO THE CONTROL DEVICE. IF POWER CIRCUITS ARE NOT SHOWN, OWNER SHALL PROVIDE BREAKERS AT DISTRIBUTION PANELS FOR POWER TO CONTROLS AND PROVIDE POWER FROM THE DISTRIBUTION PANEL TO THE CONTROL DEVICES.
8. OWNER SHALL FURNISH & INSTALL ALL REQUIRED END DEVICES, POWER SUPPLY, LOW VOLTAGE TRANSFORMERS, CONTROL WIRING & CONDUITS, ETC. FOR A COMPLETE & OPERATIONAL DDC CONTROL SYSTEM.
9. NEW WIRING & CONDUITS SHALL BE RUN CONCEALED ABOVE CEILING. ALL EXPOSED WIRING & CONDUITS SHALL BE RUN CONCEALED IN EMT IN UTILITY SPACES AND WIREMOLD IN FINISHED AREAS.
10. OWNER TO FIELD INSTALL SENSORS, CONTROLLERS, ETC. WHICH ARE NOT FACTORY-INSTALLED BY EQUIPMENT MANUFACTURERS.
11. ANY EQUIPMENT FURNISHED WITH FACTORY CONTROLS SHALL BE PROVIDED WITH BACNET / MSTP INTEGRATION CAPABILITIES AND INCLUDE ON-SITE FACTORY CONTROLS INTEGRATION START-UP IN COORDINATION WITH OWNER'S BUILDING AUTOMATION SYSTEM.



VALLEY CENTRAL SCHOOL DISTRICT  
EAST COLDENHAM ELEMENTARY SCHOOL  
2023 CAPITAL PROJECT - PHASE 1

Project Title



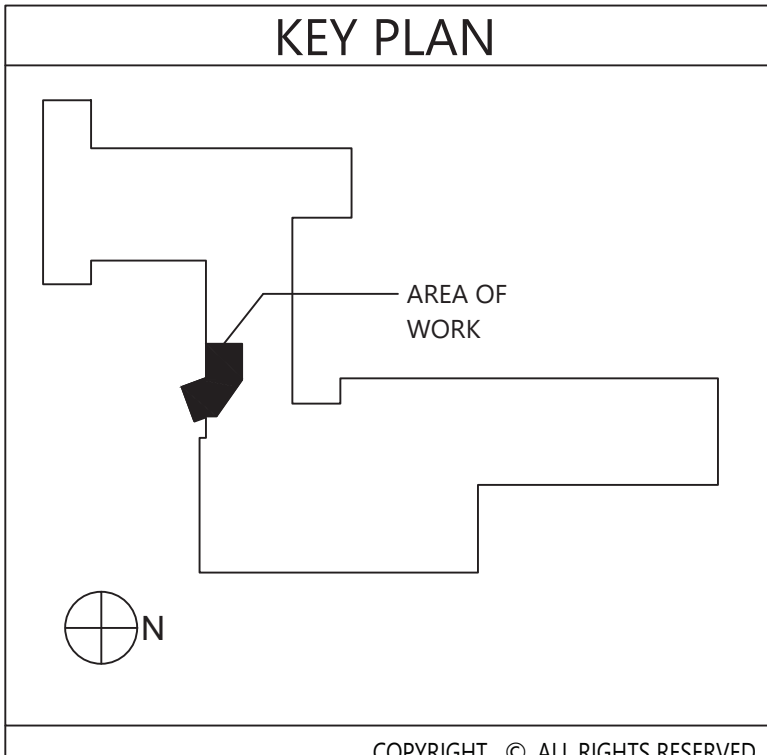
DATE	DESCRIPTION
10/04	BID ADDENDUM #2

Drawn By: BJK  
Checked By: BJK  
Proj. #: 44-13-01-06-0-013-019  
CSArch Proj. #: 187-2302.01  
Issued for Bid: 10/18/24

Sheet Title  
**MECHANICAL  
PLAN**

Sheet No.  
**ECES  
M111**

CONSTRUCTION DOCUMENTS



COPYRIGHT. ©. ALL RIGHTS RESERVED.

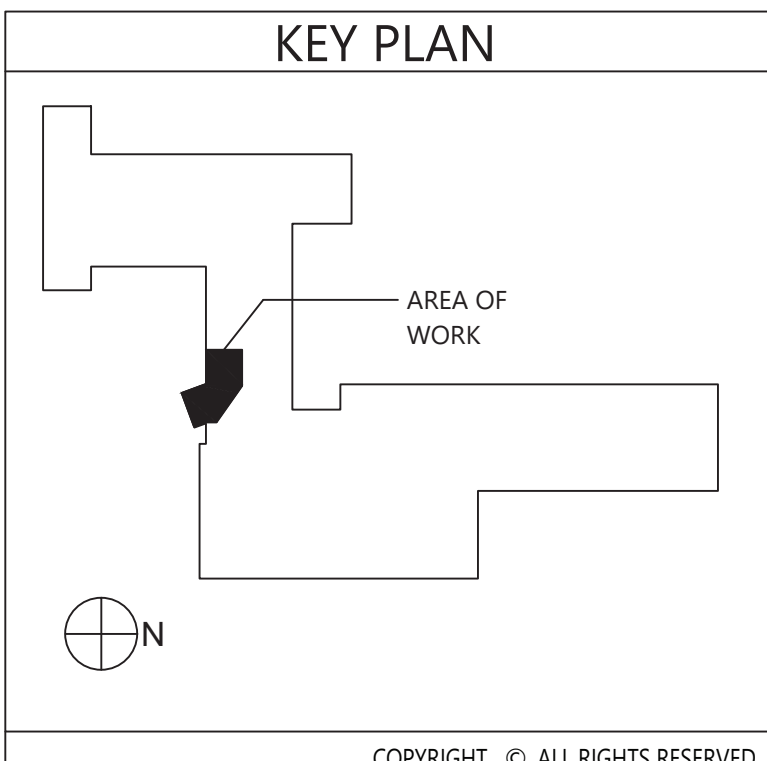


1  
ED111

Electrical Demolition Plan  
Scale: 1/4" = 1'-0"

#### Key Notes:

- 1 DISCONNECT, REMOVE & PROPERLY DISPOSE OF LIGHT FIXTURE & ASSOCIATED WIRING & CONDUIT; MAINTAIN EXISTING CIRCUIT AS NEEDED FOR ANY ADJACENT LIGHTING THAT REMAINS IN PLACE, OTHERWISE TERMINATE AT SOURCE
- 2 DISCONNECT, REMOVE & PROPERLY DISPOSE OF EXIT/ EMERGENCY LIGHT & ASSOCIATED WIRING & CONDUIT; MAINTAIN EXISTING CIRCUIT AS NEEDED FOR ANY ADJACENT LIGHTING THAT REMAINS IN PLACE, OTHERWISE TERMINATE AT SOURCE
- 3 EXISTING CABINET HEATER TO BE REMOVED; DISCONNECT, REMOVE & PROPERLY DISPOSE OF ALL ASSOCIATED CONDUITS, WIRING, DISCONNECTS, ETC.; REMOVE ALL CONDUITS AND WIRING BACK TO SOURCE
- 4 DISCONNECT, REMOVE & PROPERLY DISPOSE OF THERMOSTAT & ASSOCIATED WIRING & CONDUIT; REMOVE ALL CONDUITS AND WIRING BACK TO SOURCE
- 5 DISCONNECT, REMOVE & PROPERLY DISPOSE OF FIRE ALARM DEVICE & ASSOCIATED WIRING & CONDUIT; REMOVE ALL CONDUITS AND WIRING BACK TO SOURCE; MAINTAIN CONTINUITY OF EXISTING FIRE ALARM CIRCUITS
- 6 EXISTING FIRE ALARM ANNUNCIATOR PANEL & GRAPHIC DISPLAY TO REMAIN; TEMPORARILY REMOVE, PROTECT & STORE DURING CONSTRUCTION; REINSTALL AFTER COMPLETION OF VESTIBULE
- 7 EXISTING LIGHT FIXTURE TO REMAIN
- 8 DISCONNECT, REMOVE & PROPERLY DISPOSE OF DATA OUTLET & ASSOCIATED WIRING & CONDUIT; REMOVE ALL CONDUITS AND WIRING BACK TO SOURCE
- 9 DISCONNECT, REMOVE & PROPERLY DISPOSE OF RECEPTACLE & ASSOCIATED WIRING & CONDUIT; REMOVE ALL CONDUITS AND WIRING BACK TO SOURCE
- 10 DISCONNECT, REMOVE & PROPERLY DISPOSE OF LIGHT SWITCHES & ASSOCIATED WIRING & CONDUIT; REMOVE ALL CONDUITS AND WIRING BACK TO SOURCE; MAINTAIN CIRCUITS FOR RELOCATED SWITCHES
- 11 DISCONNECT, REMOVE & PROPERLY DISPOSE OF BELL CONTROL SWITCH & ASSOCIATED WIRING & CONDUIT; MAINTAIN CIRCUIT FOR SWITCH TO BE RELOCATED



VALLEY CENTRAL SCHOOL DISTRICT  
EAST COLDENHAM ELEMENTARY SCHOOL  
2023 CAPITAL PROJECT - PHASE 1

Project Title



1	2	3	4	5	6	7	8	9	10	11	12	13	14	15	16	17	18	19	20	21	22	23	24	25	26	27	28	29	30	31	32	33	34	35	36	37	38	39	40	41	42	43	44	45	46	47	48	49	50	51	52	53	54	55	56	57	58	59	60	61	62	63	64	65	66	67	68	69	70	71	72	73	74	75	76	77	78	79	80	81	82	83	84	85	86	87	88	89	90	91	92	93	94	95	96	97	98	99	100
1	2	3	4	5	6	7	8	9	10	11	12	13	14	15	16	17	18	19	20	21	22	23	24	25	26	27	28	29	30	31	32	33	34	35	36	37	38	39	40	41	42	43	44	45	46	47	48	49	50	51	52	53	54	55	56	57	58	59	60	61	62	63	64	65	66	67	68	69	70	71	72	73	74	75	76	77	78	79	80	81	82	83	84	85	86	87	88	89	90	91	92	93	94	95	96	97	98	99	100

Drawn By: BIK  
Checked By: BIK  
Proj. #: 44-13-01-06-0-013-019  
CSArch Proj. #: 187-2302.01  
Issued for Bid: 10/18/24

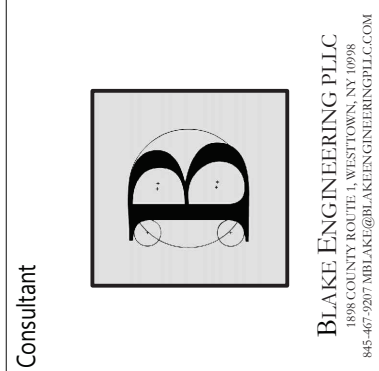
Sheet Title

ELECTRICAL  
DEMOLITION  
PLAN

Sheet No.

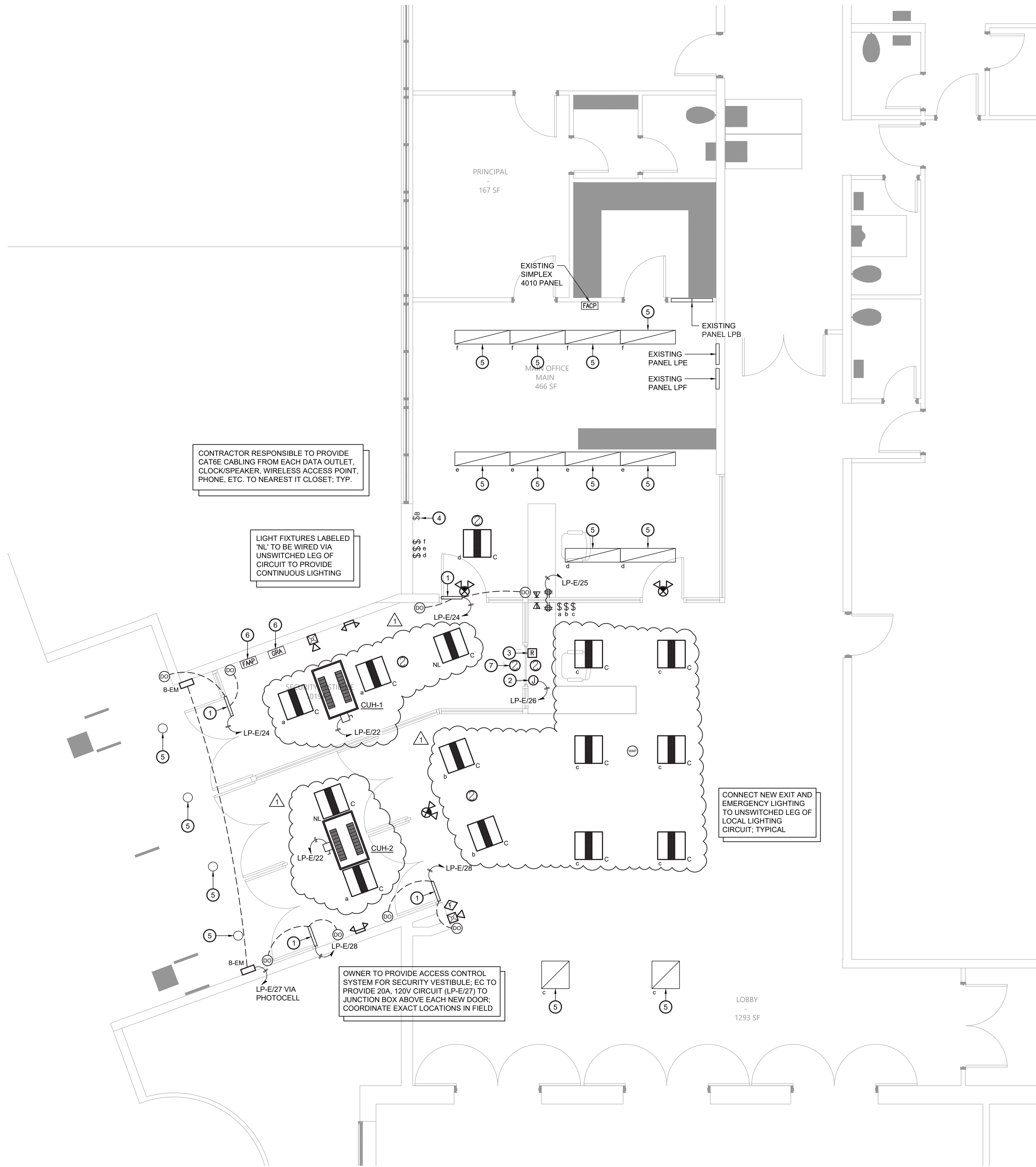
ECES  
ED111

CONSTRUCTION DOCUMENTS



CSARCH

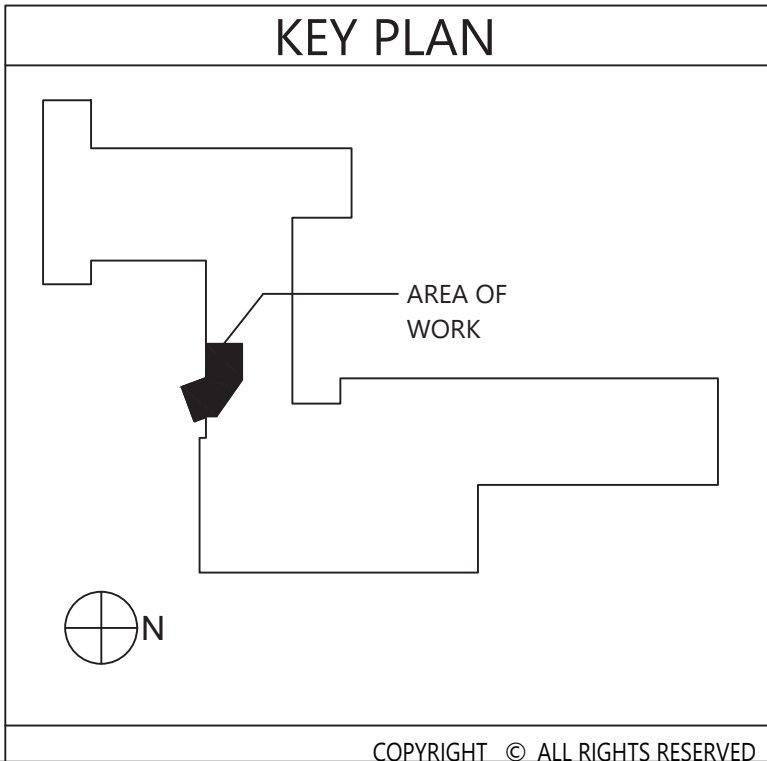




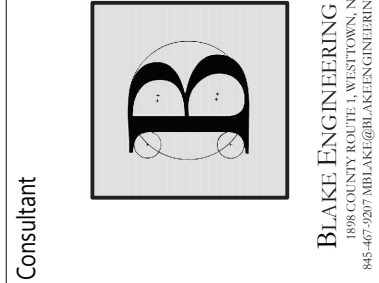
1 Electrical Plan  
Scale: 1/4" = 1'-0"

Key Notes:

- 1 ADA DOOR OPERATORS PROVIDED BY GC; EC TO PROVIDE ALL 120V LINE VOLTAGE POWER TO OPERATOR & CONTROL DEVICES; GC TO PROVIDE ALL LOW VOLTAGE CONTROLS
- 2 PROVIDE NEW 120V ELECTRICAL CONNECTION FOR FIRE SHUTTER
- 3 FIRE ALARM RELAY; FIRE SHUTTER TO CLOSE UPON ACTIVATION OF FIRE ALARM
- 4 PROVIDE NEW BELL CONTROL SWITCH; EXTEND CONDUIT & WIRING AS NEEDED TO CONNECT TO EXISTING CIRCUIT; SEE KEYNOTE 11 ON SHEET ED111 FOR ADDITIONAL INFORMATION
- 5 EXISTING LIGHT FIXTURE TO REMAIN; PROVIDE NEW SWITCH(ES) AS SHOWN; CONNECT TO EXISTING CIRCUIT
- 6 EXISTING FIRE ALARM ANNUNCIATOR PANEL & GRAPHIC DISPLAY TO REMAIN; TEMPORARILY REMOVE, PROTECT & STORE DURING CONSTRUCTION; REINSTALL AFTER COMPLETION OF VESTIBULE
- 7 PROVIDE SMOKE DETECTORS ON BOTH SIDES OF THE AUTOMATIC FIRE SHUTTER AT THE TRANSACTION WINDOW; CONNECT TO THE EXISTING BUILDING FIRE ALARM SYSTEM



VALLEY CENTRAL SCHOOL DISTRICT  
EAST COLDENHAM ELEMENTARY SCHOOL  
2023 CAPITAL PROJECT - PHASE 1



19 Front St., Newburgh, New York 12550-7601  
845-561-3179 www.csarch.com

CSARCH

Project Title



DATE	DESCRIPTION
10/04	BID ADDENDUM #2

Drawn By: BIK  
Checked By: BIK  
Proj. #: 44-13-01-06-0-013-019  
CSArch Proj. #: 187-2302.01  
Issued for Bid: 10/18/24

Sheet Title

ELECTRICAL  
PLAN

Sheet No.

ECES  
E111

CONSTRUCTION DOCUMENTS