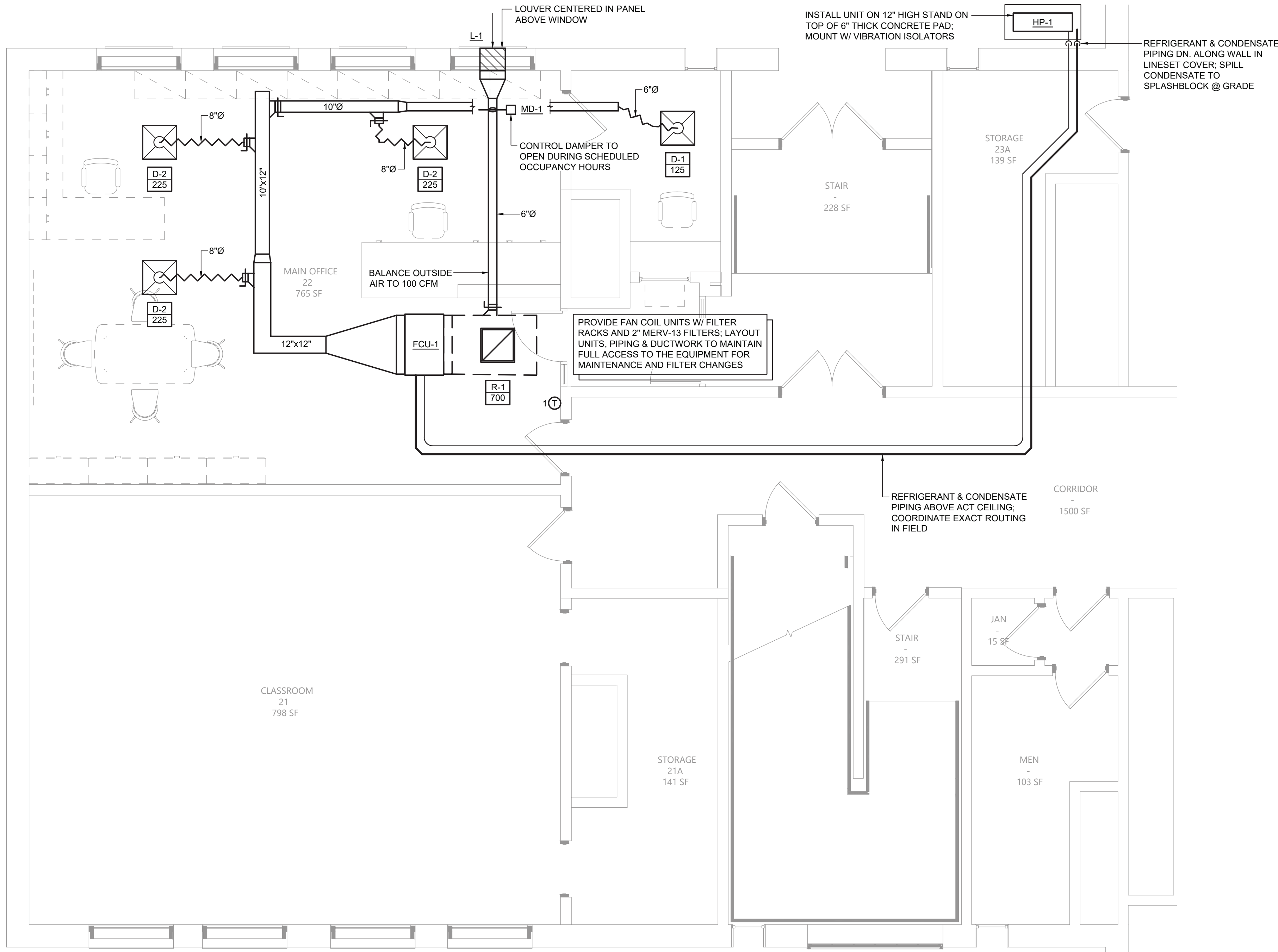


SPLIT SYSTEMS WITH DUCT FAN COIL & HEAT PUMP FURNISHED BY OWNER. INSTALLED BY CONTRACTOR. CONTRACTOR IS RESPONSIBLE TO RECEIVE THE EQUIPMENT DELIVERY AT THE PROJECT SITE, MOVE EQUIPMENT FROM TRUCK(S) TO A DESIGNATED STORAGE LOCATION ON THE SITE & RIG THE UNIT INTO THE FINAL INSTALLATION LOCATION; CONTRACTOR IS TO PROVIDE ALL ASSOCIATED COMPONENTS, I.E., DUCTWORK, PIPING, CONTROLS, ACCESSORIES, ETC. UNLESS OTHERWISE NOTED IN THE PROJECT DOCUMENTS, REFER TO FRONT END DOCUMENTS FOR ADDITIONAL INFORMATION.



1 Mechanical Plan
M111 Scale: 1/4" = 1'-0"

INDOOR MINI-SPLIT UNIT SCHEDULE																			
EQUIPMENT TAG	MANUFACTURER (OR ACCEPT. EQUAL)	MODEL	MINI-SPLIT UNIT TYPE	AREA OF BUILDING SERVED	AIRFLOW (CFM)	COOLING			HEATING			PAIRED OUTDOOR UNIT	EXTERNAL STATIC PRESSURE (IN. W.C.)	ELECTRICAL POWER REQUIREMENTS				WEIGHT (LB)	NOTES
						CAPACITY (MBH)	EDB (°F)	EWB (°F)	CAPACITY (MBH)	EDB (°F)	EWB (°F)			VOLT.	PHASE	Hz.	W		
FCU-1	DAIKIN	PEAD-A30AA8	DUCTED MEDIUM STATIC	MAIN OFFICE	800	30.0	80.0	67.0	32.0	70.0	60.0	HP-1	0.50	208	1	60	121	67	HYPER HEATING UNIT; SEE VRF SYSTEM NOTES

AIR-COOLED HEAT PUMP SCHEDULE																				
EQUIPMENT TAG	MANUFACTURER (OR ACCEPT. EQUAL)	MODEL	INDOOR UNITS SERVED	COMPRESSOR TYPE	NOM. COOL CAPACITY (MBH)	NOM. HEAT CAPACITY (MBH)	OUTDOOR OPERATING TEMP. RANGE (°F)		AHRI EFFICIENCY RATINGS			REFRIGERANT	SOUND PRESSURE LEVEL COOLING/HEATING (dBA)	ELECTRICAL POWER REQUIREMENTS					WEIGHT (LB)	NOTES
							COOLING	HEATING	EER	SEER	COP			VOLT.	PHASE	Hz.	MCA	MOCP		
HP-1	MITSUBISHI	SUZ-KA30NAHZ	FCU-1	INVERTER SCROLL HERMETIC	30.0	32.0	0 TO 115	-13 TO 75	12.5	15.0	3.4	R410A	52/53	208	1	60	24	40	261	FURNISH W/ REQUIRED PIPING ACCESSORIES

AIR GRILLE/DIFFUSER SCHEDULE													
EQUIPMENT TAG	MANUFACTURER (OR ACCEPT. EQUAL)	MODEL	AIR DEVICE TYPE	AIRFLOW (CFM)		MAX AIR PRESS. DROP (IN. W.C.)	MOUNTING	PANEL/FRAME SIZE (IN.)	NECK SIZE (IN.)	MAX NC	DAMPER	FINISH	NOTES
				MIN.	MAX.								
D-1	KRUEGER	PLQ-6-F23-24x24-PR10-IB-44	SQUARE PLAQUE FACE DIFFUSER	50	175	0.10	LAY-IN	24"x24"	6"Ø	20	OBD	WHITE	PROVIDE W/ INSULATED BLANKET ON BACKPAN
D-2	KRUEGER	PLQ-8-F23-24x24-PR10-IB-44	SQUARE PLAQUE FACE DIFFUSER	176	300	0.10	LAY-IN	24"x24"	8"Ø	20	OBD	WHITE	PROVIDE W/ INSULATED BLANKET ON BACKPAN
R-1	KRUEGER	S80P-20x20-F23-24x24-00-00-00-44	PERFORATED FACE RETURN GRILLE	0	1,600	0.10	LAY-IN	24"x24"	20"x20"	25	-	WHITE	FURNISH & INSTALL FULL-SIZE SHEET METAL PLENUM BOX ON REAR OF GRILLE, PAINT INSIDE FLAT BLACK

LOUVER SCHEDULE														
EQUIPMENT TAG	QTY.	MANUFACTURER (OR ACCEPT. EQUAL)	MODEL	AIR DEVICE TYPE	LOUVER SIZE			FREE AREA (SQ. FT.)	AIRFLOW (CFM)	VELOCITY (FT./MIN.)	MOUNTING	SCREEN	FINISH	NOTES
					WIDE	HIGH	DEPTH							
L-1	1	RUSKIN	ELFB375DX	STATIONARY LOUVER	18"	12"	6"	0.63	100	158.7	EXTERIOR WALL	YES	TBD	1, 2 & 3
1. COLOR TO BE COORDINATED WITH OWNER/ARCHITECT BEFORE ORDERING 2. FURNISH WITH INSECT-SCREEN OPTION. 3. FURNISH W/ PROPER MOUNTING HARDWARE.														

VRF System Notes:

- Wired 7 day programmable thermostat shall be furnished by owner for each indoor unit. Thermostats ship loose for field installation and wiring by the mechanical contractor.
- Owner to furnish central controller for local set point control and system viewing. Controller to be installed and wiring by mechanical contractor. 24V power by electrical contractor.
- Disconnect switches for condensing units and indoor units shall be furnished by the owner and installed by the electrical contractor.
- External supports for indoor and condensing units shall be furnished by owner and installed by the mechanical contractor.
- Filter rack and 2" pleated MERV-13 filters for ducted units shall be furnished by owner and installed by the mechanical contractor. Filter rack shall be galvanized steel, fully insulated & factory assembled. Typical of FLT-H series or equal.
- Condensate pumps ship for field installation by mechanical contractor for wall mounted units. Ducted units furnished with factory mounted condensate pump. Mechanical contractor to provide condensate piping from all units to sanitary drain. Field verify exact routing and termination point in building.
- Provide refrigerant isolation valves on liquid and gas lines at every fan coil unit.

