

2022 CAPITAL PROJECT
PHASE 3

ARCHITECT

MEMASI

2 LYON PLACE
WHITE PLAINS, NY 10601
914.915.9519
MEMASIDESIGN.COM

MECHANICAL/ELECTRICAL/PLUMBING CONSULTANTS
STANTEC
30 OAK STREET, SUITE 400
STAMFORD, CT 06905

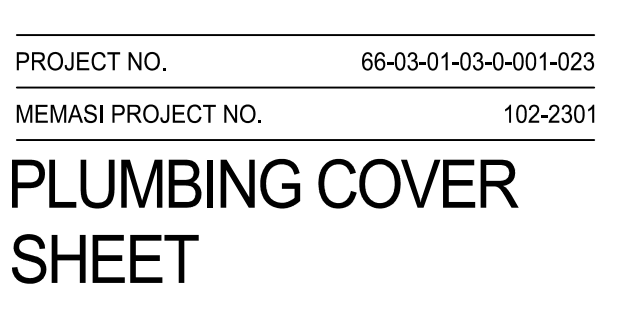
NEW YORK STATE CODES & STANDARDS	
•	2020 BUILDING CODE OF NEW YORK STATE
•	2020 FIRE CODE OF NEW YORK STATE
•	2020 PLUMBING CODE OF NEW YORK STATE
•	2020 MECHANICAL CODE OF NEW YORK STATE

REFERENCED STANDARDS	
<p>APPLICABLE REFERENCE STANDARDS SHALL BE AS REFERENCED BY ALL STATE CODES. THE LIST BELOW IS FOR QUICK REFERENCE AND DOES NOT INCLUDE ALL APPLICABLE REFERENCE STANDARDS.</p> <ul style="list-style-type: none"> • 2016 NFPA 13 – STANDARD FOR THE INSTALLATION OF SPRINKLER SYSTEMS • 2016 NFPA 14 – STANDARD FOR THE INSTALLATION OF STANDPIPE AND HOSE SYSTEMS • 2016 NFPA 20 – STANDARD FOR FIRE PUMP AND PUMP INSTALLATIONS 	

OPENING / SLEEVE SCHEDULE		
INSULATED DOMESTIC COLD WATER, HOT WATER, AND HOT WATER REGRICULATION PIPING		
PIPE DIAMETER	WALL / FLOOR SLEEVE DIAMETER	BEAM OPENING DIAMETER
7 & 8"	3"	4"

5"	8"	8"
6"	10"	9"
UNINSULATED SANITARY, WASTE, VENT, STORM, AND GAS PIPING		
PIPE DIAMETER	WALL / FLOOR SLEEVE DIAMETER	BEAM OPENING DIAMETER
1"	3"	3"

	PIPE, FITTING, AND JOINT
	(NOT ALL PIPE, FITTING, AND JOINT)



AH P001

© 2023 MEMASI. ALL RIGHTS RESERVED.

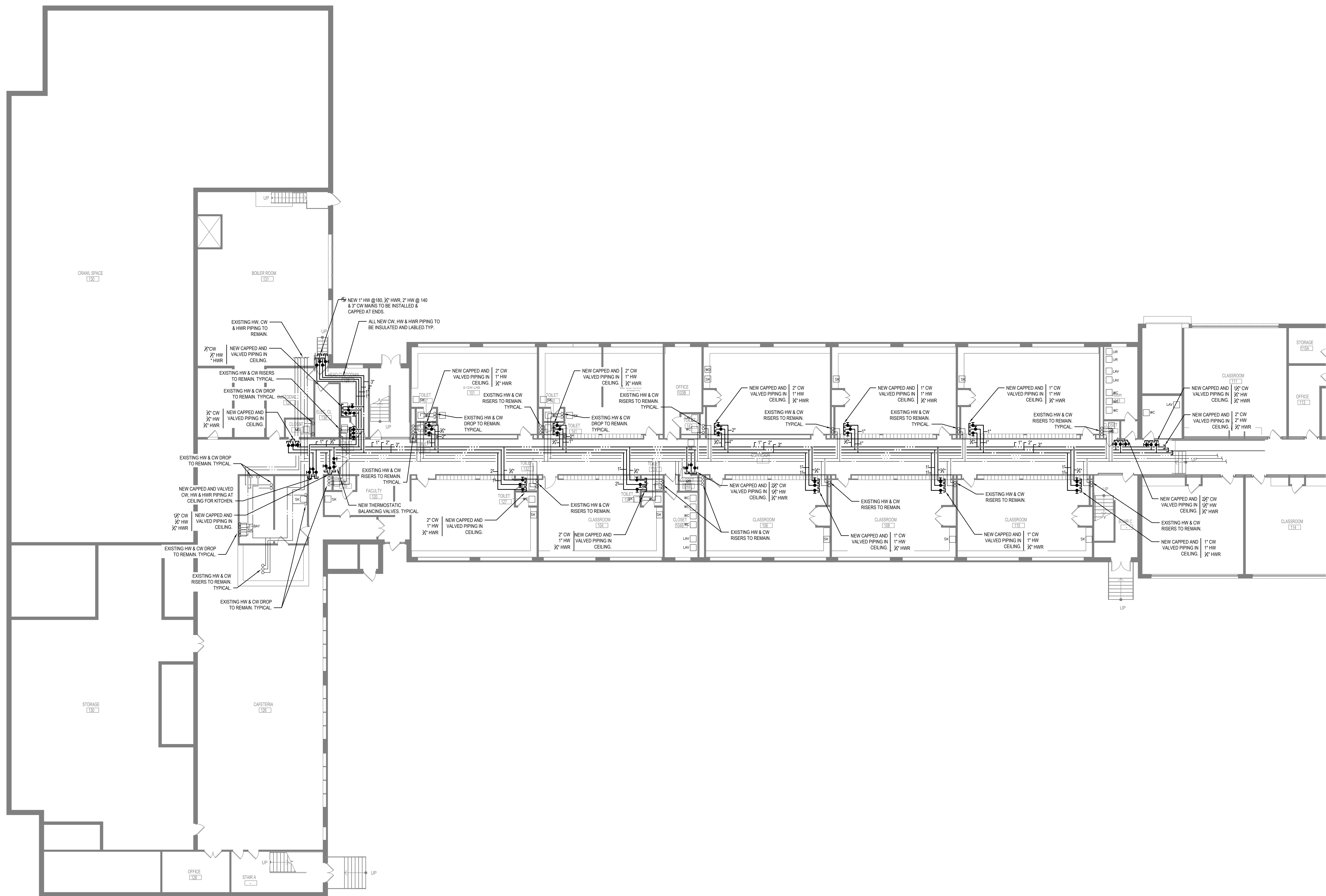
ANNE HUTCHINSON
ELEMENTARY SCHOOL

ARCHITECT
MEMASI
2 LYON PLACE
WHITE PLAINS, NY 10601
914.915.9519
MEMASIDESIGN.COM

STRUCTURAL CONSULTANT
REILLY TARANTINO ENGINEERING
100 PARK BLVD, SUITE 209
MASSAPEQUA PARK, NY 11762

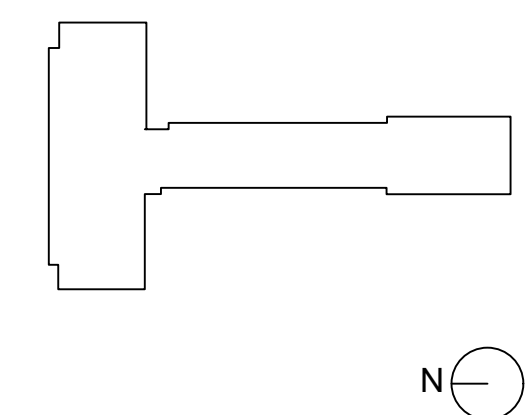
MECHANICAL/ELECTRICAL/PLUMBING CONSULTANT
STANTEC
80 OAK STREET, SUITE 400
STAMFORD, CT 06905

HAZARDOUS MATERIALS CONSULTANT
WSP
ONE PENN PLAZA
250 W 34TH ST., 4TH FLOOR
NEW YORK, NY 10014


$$\overline{3/32'' = 1'-0''}$$

-	-
-	-
-	-
-	-
-	-
-	-
-	-
BID SET	12/18/2023
ISSUE	DATE

KEY PLAN



PROJECT NO.	66-03-01-03-0-001-023
MEMASI PROJECT NO.	102-2301

PLUMBING PLAN - GROUND FLOOR

AH P100

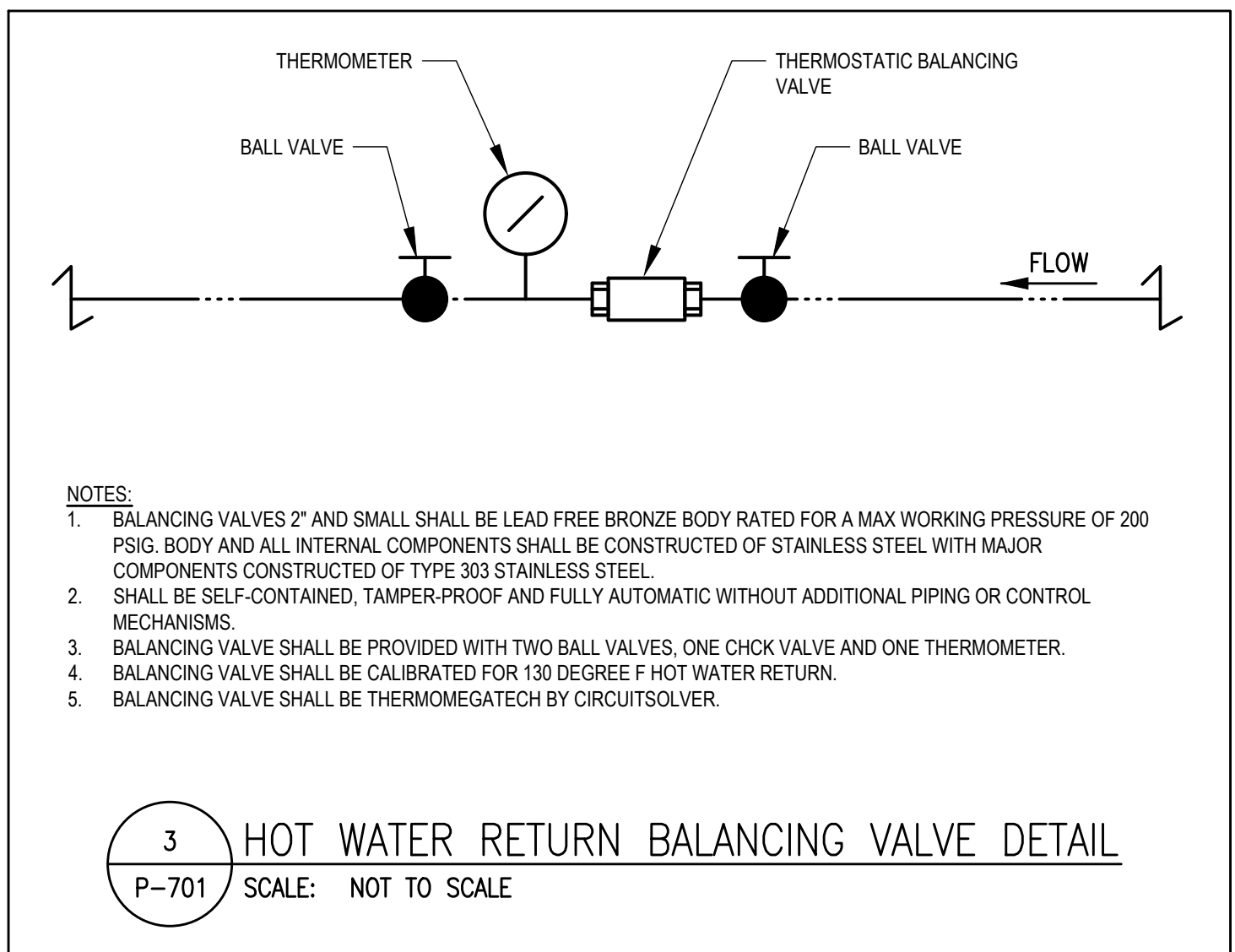
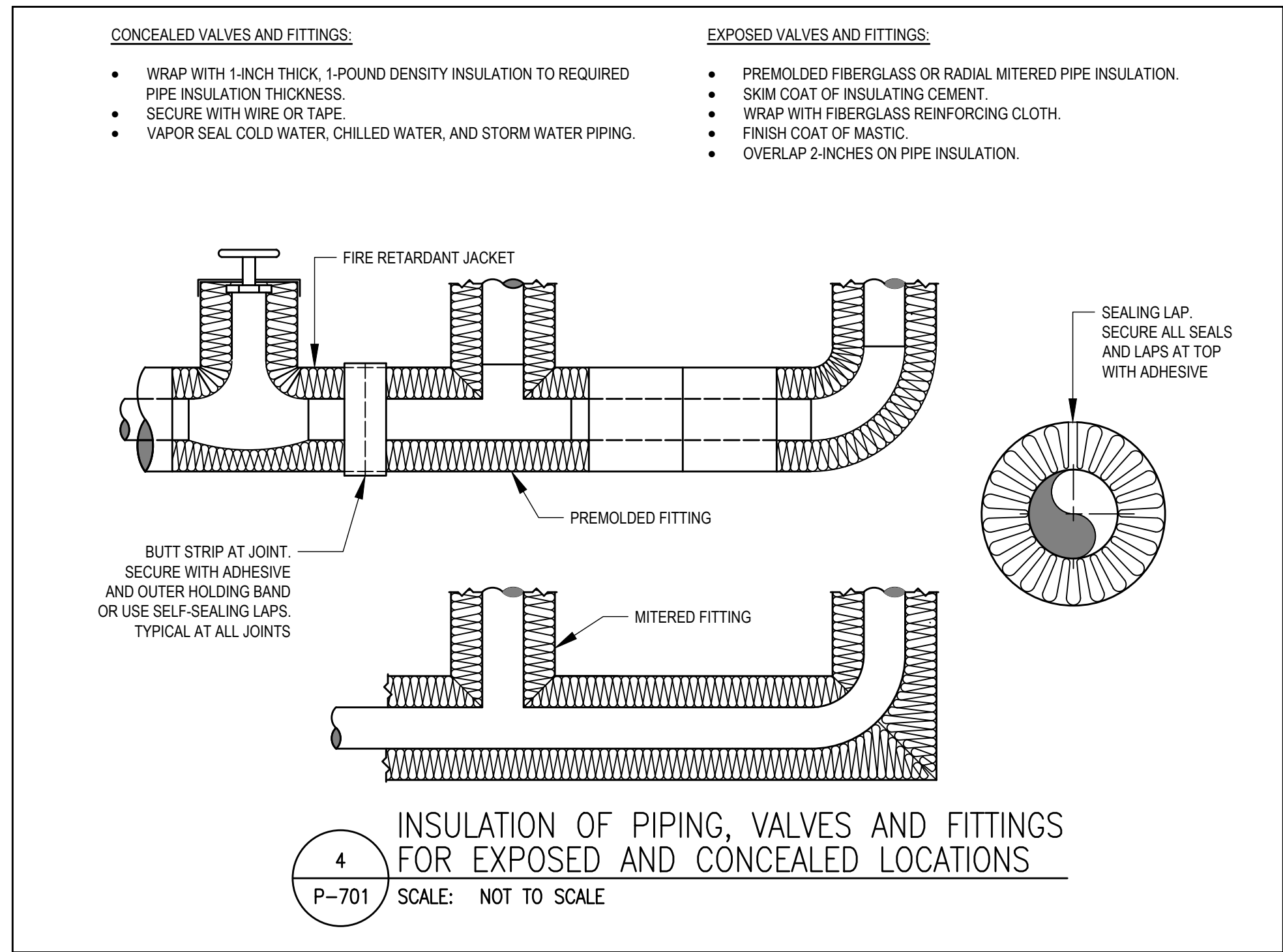
© 2023 MEMASI. ALL RIGHTS RESERVED.

ANNE HUTCHINSON
ELEMENTARY SCHOOL

MEMASID
2 LYON PLACE
WHITE PLAINS, NY 10601
914.915.9519
MEMASIDDESIGN.COM

MECHANICAL/ELECTRICAL/PLUMBING CONSULTANT
STANTEC
30 OAK STREET, SUITE 400
STAMFORD, CT 06905

HAZARDOUS MATERIALS CONSULTANT
WSP
ONE PENN PLAZA
250 W 34TH ST., 4TH FLOOR
NEW YORK, NY 10014

[illegible]

PLUMBING DETAILS