

2022 CAPITAL PROJECT
PHASE 3

ARCHITECT
MEMASI
2 LYON PLACE
WHITE PLAINS, NY 10601
914.915.9519
MEMASIDESIGN.COM

HAZARDOUS MATERIALS CONSULTANT
WSP
ONE PENN PLAZA
250 W 34TH ST., 4TH FLOOR
NEW YORK, NY 10014

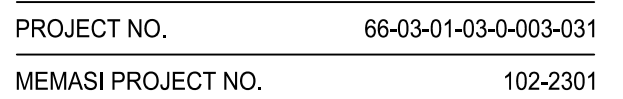
GENERAL PLUMBING NOTES:

1. PLUMBING CONTRACTOR WILL RE-INSULATE ANY EXISTING DOMESTIC WATER ELBOWS AND PIPE RUNS WHICH WERE REMOVED BY THE ABATEMENT. SEE H-DRAWINGS FOR LOCATIONS AND SCOPE. ALL COSTS TO BE INCLUDED IN THE PLUMBING CONTRACTORS BASE BID.
2. PLUMBING CONTRACTOR IS RESPONSIBLE FOR ALL WORK ASSOCIATED WITH THE PLUMBING WORK. THIS INCLUDES:
 - a. CUTTING TO GAIN ACCESS TO ROUGHING UNITS
 - b. PATCHING TO MATCH WITH LIKE MATERIALS/COLORS ANY SURFACES IMPACTED
 - c. PVC JACKET SHALL BE INSTALLED ON ANY EXPOSED PLUMBING PIPING.
 - d. EXISTING CEILING REMOVAL/REPLACE WHERE NEEDED FOR PLUMBING WORK, EXCEPT IN AREAS WHERE CEILING REMOVAL/REPLACEMENT IS INDICATED AS GENERAL CONTRACTOR BASE SCOPE ON THE ARCHITECTURAL REFLECTIVE CEILING PLANS..
 - e. REMOVAL AND REINSTALLATION/REPLACEMENT OF EXISTING CASEWORK IN CLASSROOMS AND LABS.
 - f. IN SOME LOCATION THERE ARE PLASTER CEILINGS WHICH REMAIN ABOVE THE ACOUSTIC TILE/GRID CEILING. PLUMBING CONTRACTOR WILL CUT ACCESS HOLES WHERE NECESSARY TO ENABLE INSTALL OF HANGERS AND PIPING TO STRUCTURE ABOVE.

OPENING / SLEEVE SCHEDULE		
INSULATED DOMESTIC COLD WATER, HOT WATER, AND HOT WATER RECIRCULATION PIPING		
PIPE DIAMETER	WALL / FLOOR SLEEVE DIAMETER	BEAM OPENING DIAMETER
1" & 1 1/2"	3"	4"
1"	4"	4 1/2"
1 1/2"	4"	5"
1 1/2"	4"	5"
2" & 2 1/2"	5"	6"
3"	6"	6 1/2"
4"	8"	7 1/2"
5"	8"	8"
6"	10"	9"
UNINSULATED SANITARY, WASTE, VENT, STORM, AND GAS PIPING		
PIPE DIAMETER	WALL / FLOOR SLEEVE DIAMETER	BEAM OPENING DIAMETER
1 1/2"	3"	3"
2"	4"	3 1/2"
2 1/2"	4"	4"
3"	5"	4 1/2"
4"	6"	5"
5"	8"	6"
6"	8"	7 1/2"
6"	10"	9"
10"	12"	11"
12"	15"	13 1/2"
15"	18"	16"

NEW YORK STATE CODES & STANDARDS
<ul style="list-style-type: none"> • 2020 BUILDING CODE OF NEW YORK STATE • 2020 FIRE CODE OF NEW YORK STATE • 2020 PLUMBING CODE OF NEW YORK STATE • 2020 MECHANICAL CODE OF NEW YORK STATE • 2020 FUEL GAS CODE OF NEW YORK STATE • 2020 NYS UNIFORM CODE SUPPLEMENT • NYS EDUCATION DEPARTMENT 2022 MANUAL OF PLANNING STANDARDS
NEW YORK STATE ENERGY CODES
<ul style="list-style-type: none"> • 2020 ENERGY CONSERVATION CONSTRUCTION CODE OF NEW YORK STATE • 2016 ASHRAE 90.1
REFERENCED STANDARDS
<p>APPLICABLE REFERENCE STANDARDS SHALL BE AS REFERENCED BY ALL STATE CODES. THE LIST BELOW IS FOR YOUR CONVENIENCE AND DOES NOT INCLUDE ALL APPLICABLE REFERENCE STANDARDS.</p> <ul style="list-style-type: none"> • 2016 NFPA 13 – STANDARD FOR THE INSTALLATION OF SPRINKLER SYSTEMS • 2016 NFPA 14 – STANDARD FOR THE INSTALLATION OF STANDPIPE AND HOSE SYSTEMS • 2016 NFPA 20 – STANDARD FOR THE INSTALLATION OF STATIONARY PUMPS FOR FIRE PROTECTION • 2017 NFPA 70 – NATIONAL ELECTRICAL CODE • 2016 NFPA 72 – NATIONAL FIRE ALARM AND SIGNALING CODE

KEY PLAN



MSHS P001

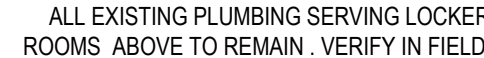
2022 CAPITAL PROJECT
PHASE 3

ARCHITECT

STRUCTURAL CONSULTANT

MECHANICAL/ELECTRICAL/PLUMBING CONSULTANT

HAZARDOUS MATERIALS CONSULTANT


$$\overline{3/32'' = 1'-0''}$$

BID SET	12/18/2023
ISSUE	DATE

PLUMBING

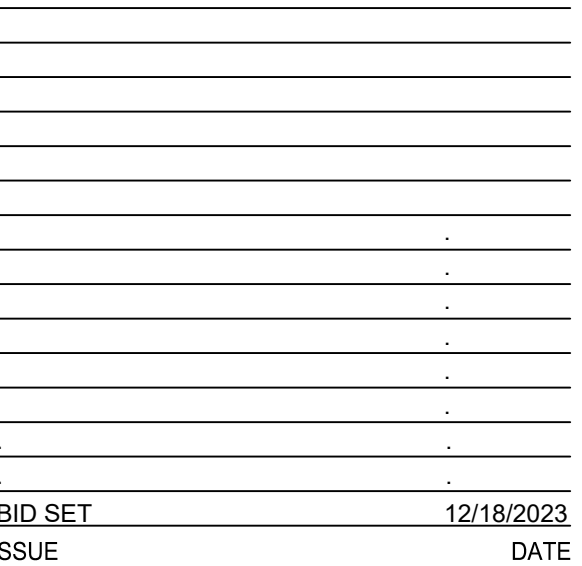
MSHS PD100-A

© 2023 MEMASI. ALL RIGHTS RESERVED.

MIDDLE SCHOOL /
HIGH SCHOOL

STRUCTURAL CONSULTANT
REILLY TARANTINO ENGINEERING
100 PARK BLVD, SUITE 209
MASSAPEQUA PARK, NY 11762

HAZARDOUS MATERIALS CONSULTANT
WSP
ONE PENN PLAZA
250 W 34TH ST., 4TH FLOOR
NEW YORK, NY 10014



PLUMBING
DEMOLITION PART
PLAN - BASEMENT -
AREA B

© 2023 MEMASI. ALL RIGHTS RESERVED.

2022 CAPITAL PROJECT PHASE 3

ARCHITECT
MEMASI
LYON PLACE
WHITE PLAINS, NY 10601
414.915.9519
MEMASIDESIGN.COM

MECHANICAL/ELECTRICAL/PLUMBING CONSULTANT
STANTEC
50 OAK STREET, SUITE 400
STAMFORD, CT 06905

	-
	-
	-
	-
	-
	-
	-
	-
BID SET	12/18/2023
SUITE	DATE

PLUMBING
DEMOLITION PART
PLAN - BASEMENT -
AREA C

© 2023 MEMASI. ALL RIGHTS RESERVED.

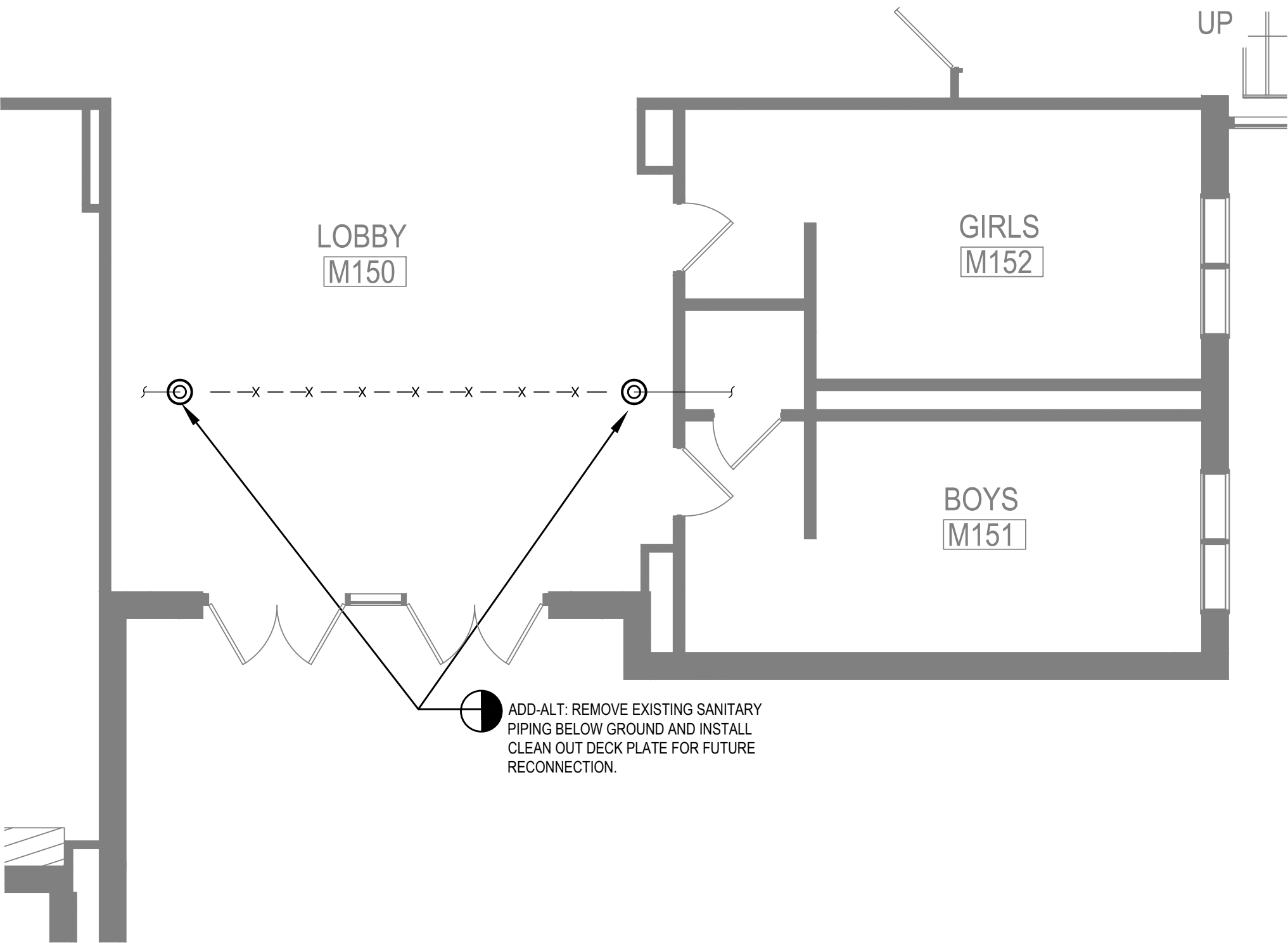
MIDDLE SCHOOL /
HIGH SCHOOL

MEMASI

HAZARDOUS MATERIALS CONSULTANT
WSP
ONE PENN PLAZA
250 W 34TH ST., 4TH FLOOR
NEW YORK, NY 10014



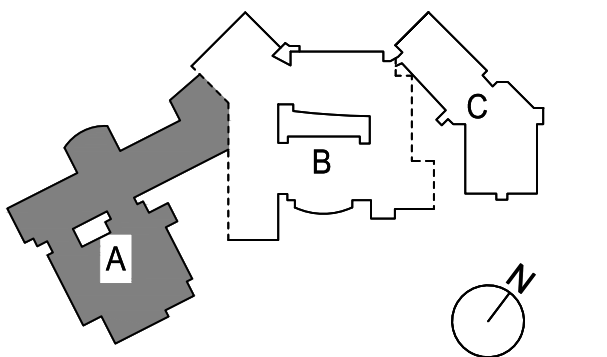
PLUMBING NOTE
EXISTING PLUMBING FIXTURES TO BE REUSED
SHALL BE KEPT IN A SAFE LOCATION TO KEEP
FROM BEING DAMAGED DURING
CONSTRUCTION.



ADD ALTERNATE - PLUMBING DEMOLITION PART PLAN
3/16"=1'-0"

BID SET ISSUE	12/18/2023 DATE
------------------	--------------------

KEY PLAN



PROJECT NO.	66-03-01-03-0-003-031
MEMASI PROJECT NO.	102-2301

PLUMBING
DEMOLITION PART
PLAN - FIRST FLOOR
- AREA A

MSHS PD101-A

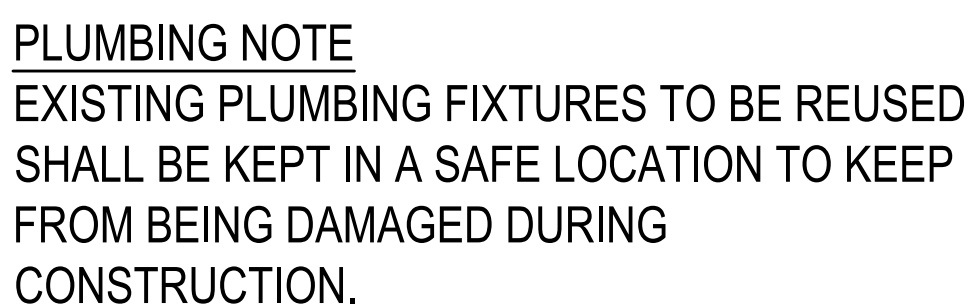
MIDDLE SCHOOL /
HIGH SCHOOL

ARCHITECT
MEMASIDESIGN
2 LYON PLACE
WHITE PLAINS, NY 10601
914.915.9519
MEMASIDESIGN.COM

STRUCTURAL CONSULTANT
REILLY TARANTINO ENGINEERING
100 PARK BLVD, SUITE 209
MASSAPEQUA PARK, NY 11762

MECHANICAL/ELECTRICAL/PLUMBING CONSULTANT
STANTEC
100 OAK STREET, SUITE 400
STAMFORD, CT 06905

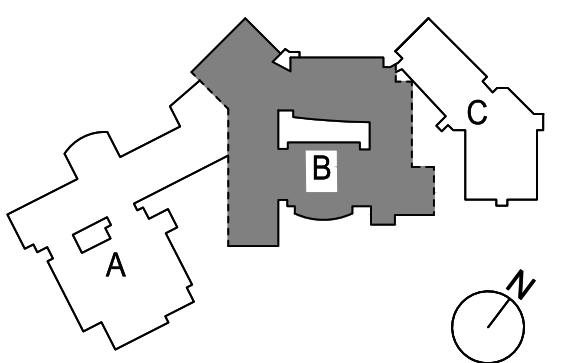
HAZARDOUS MATERIALS CONSULTANT
WSP
ONE PENN PLAZA
250 W 34TH ST., 4TH FLOOR
NEW YORK, NY 10014



PLUMBING DEMOLITION PART PLAN - FIRST FLOOR - AREA B

BID SET	12/18/2023
SUUE	DATE

KEY PLAN



PROJECT NO.	66-03-01-03-0-003-031
MEMASI PROJECT NO.	102-2301

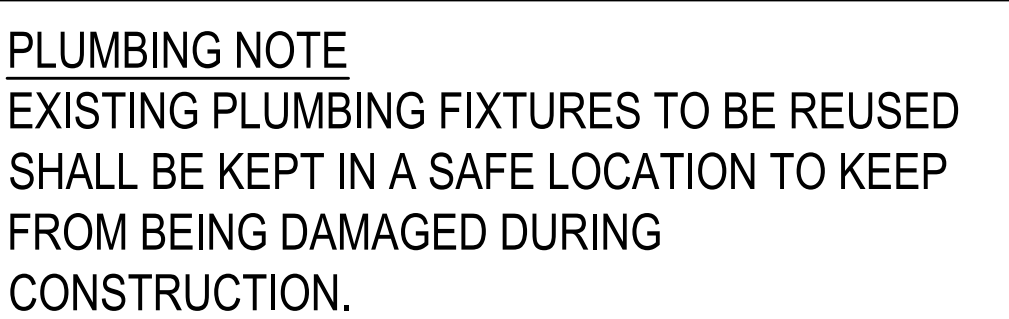
PLUMBING
DEMOLITION PART
PLAN - FIRST FLOOR
- AREA B

MSHS PD101-B

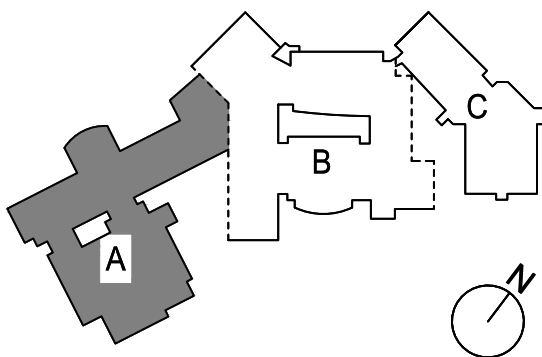
MIDDLE SCHOOL /
HIGH SCHOOL

2 LYON PLACE
WHITE PLAINS, NY 10601
914.915.9519
MEMASIDESIGN.COM

WSP
ONE PENN PLAZA
250 W 34TH ST., 4TH FLOOR
NEW YORK, NY 10014


$$\overline{3/32'' = 1'-0''}$$
[illegible]

KEY PLAN



PROJECT NO.	66-03-01-03-0-003-03
MEMASI PROJECT NO.	102-230

PLUMBING
DEMOLITION PART
PLAN - SECOND
FLOOR - AREA A

MSHS PD102-A

© 2023 MEMASI. ALL RIGHTS RESERVED.

2022 CAPITAL PROJECT PHASE 3

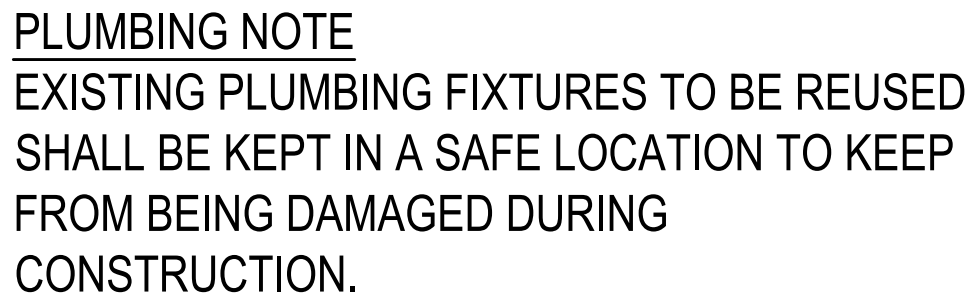
MIDDLE SCHOOL /
HIGH SCHOOL

ARCHITECT
MEMASIDESIGN
1 LYON PLACE
WHITE PLAINS, NY 10601
t44.915.9519
MEMASIDESIGN.COM

STRUCTURAL CONSULTANT
REILLY TARANTINO ENGINEERING
100 PARK BLVD, SUITE 209
MASSAPEQUA PARK, NY 11762

MECHANICAL/ELECTRICAL/PLUMBING CONSULTANT
STANTEC
100 OAK STREET, SUITE 400
STAMFORD, CT 06905

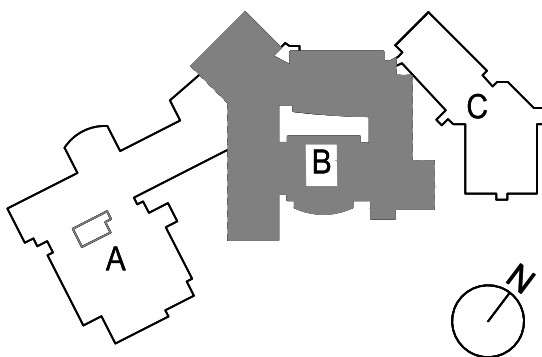
HAZARDOUS MATERIALS CONSULTANT
WSP
ONE PENN PLAZA
250 W 34TH ST., 4TH FLOOR
NEW YORK, NY 10014



PLUMBING DEMOLITION PART PLAN - SECOND FLOOR - AREA B

	*
	*
	*
	*
	*
	*
BID SET	12/18/2023
SSEE	DATE

KEY PLAN



PROJECT NO.	66-03-01-03-0-003-031
MEMASI PROJECT NO.	102-2301

PLUMBING
DEMOLITION PART
PLAN - SECOND
FLOOR - AREA B

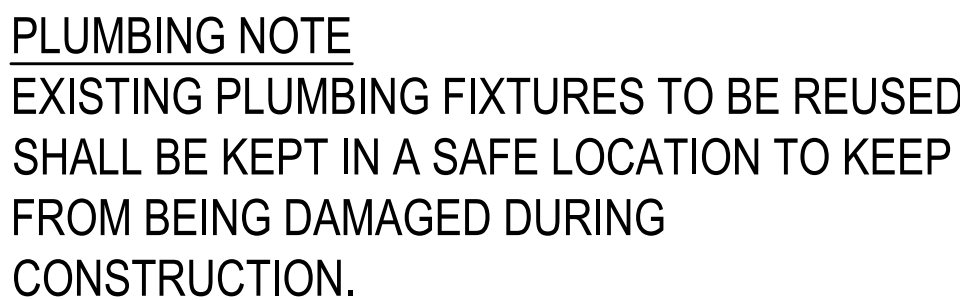
MSHS PD102-B

© 2023 MEMASI. ALL RIGHTS RESERVED

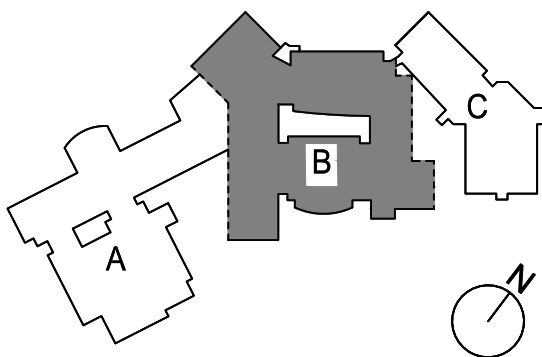
MIDDLE SCHOOL /
HIGH SCHOOL

STRUCTURAL CONSULTANT
REILLY TARANTINO ENGINEERING
100 PARK BLVD, SUITE 209
MASSAPEQUA PARK, NY 11762

HAZARDOUS MATERIALS CONSULTANT
WSP
ONE PENN PLAZA
250 W 34TH ST., 4TH FLOOR
NEW YORK, NY 10014



KEY PLAN



PLUMBING
DEMOLITION PART
PLAN - THIRD FLOOR
- AREA B

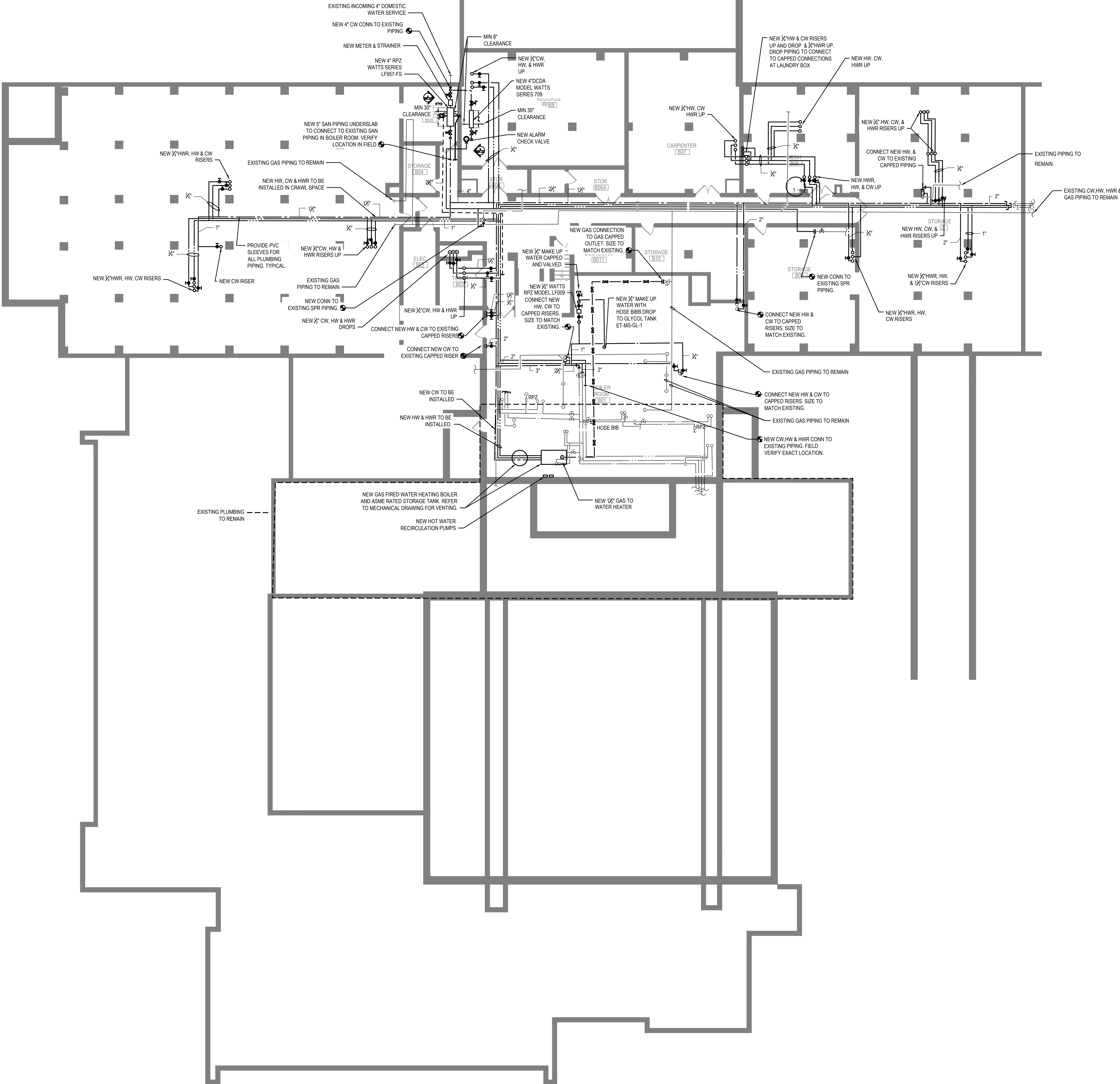
© 2023 MEMASI. ALL RIGHTS RESERVED

ARCHITECT
MEMASI
2 LYON PLACE
WHITE PLAINS, NY 10601
914.915.9519
MEMASIDESIGN.COM

STRUCTURAL CONSULTANT
REILLY TARANTINO ENGINEERING
100 PARK BLVD, SUITE 209
MASSAPEQUA PARK, NY 11762

MECHANICAL/ELECTRICAL/PLUMBING CONSULTANT
STANTEC
30 OAK STREET, SUITE 400
STAMFORD, CT 06905

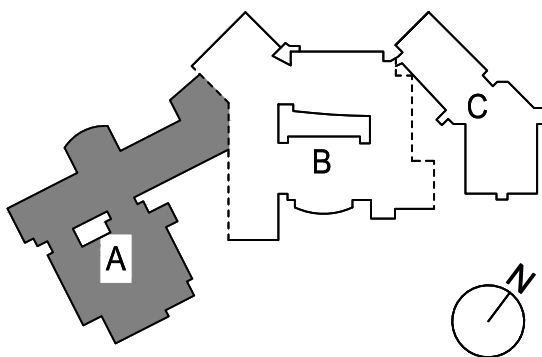
HAZARDOUS MATERIALS CONSULTANT
WSP
ONE PENN PLAZA
250 W 34TH ST, 4TH FLOOR
NEW YORK, NY 10014



PLUMBING PART PLAN - BASEMENT - AREA A
3/32" = 1'-0"

- GENERAL PLUMBING NOTES:
1. PLUMBING CONTRACTOR WILL RE-INSULATE ANY EXISTING DOMESTIC WATER ELBOWS AND PIPE RUNS WHICH WERE REMOVED BY THE ABATEMENT. SEE H-DRAWINGS FOR LOCATIONS AND SCOPE. ALL COSTS TO BE INCLUDED IN THE PLUMBING CONTRACTORS BASE BID.
 2. PLUMBING CONTRACTOR IS RESPONSIBLE FOR ALL WORK ASSOCIATED WITH THE PLUMBING WORK. THIS INCLUDES:
 - a. CUTTING TO GAIN ACCESS TO ROUGHING UNITS
 - b. PATCHING TO MATCH WITH LIKE MATERIALS/COLORS ANY SURFACES IMPACTED
 - c. PVC JACKET SHALL BE INSTALLED ON ANY EXPOSED PLUMBING PIPING.
 - d. EXISTING CEILING REMOVAL/REPLACE WHERE NEEDED FOR PLUMBING WORK, EXCEPT IN AREAS WHERE CEILING REMOVAL/REPLACEMENT IS INDICATED AS GENERAL CONTRACTOR BASE SCOPE ON THE ARCHITECTURAL REFLECTIVE CEILING PLANS.
 - e. REMOVAL AND REINSTALLATION/REPLACEMENT OF EXISTING CASEWORK IN CLASSROOMS AND LABS.
 - f. IN SOME LOCATION THERE ARE PLASTER CEILINGS WHICH REMAIN ABOVE THE ACOUSTIC TILE/GRID CEILING. PLUMBING CONTRACTOR WILL CUT ACCESS HOLES WHERE NECESSARY TO ENABLE INSTALL OF HANGERS AND PIPING TO STRUCTURE ABOVE.
 - g. CONTRACTOR SHALL REPAIR AND REPAINT ALL WALLS IMPACTED BY PLUMBING WORK. CASEWORK SHALL BE REMOVED AND STORE IN A SAFE LOCATION TO PREVENT DAMAGE DURING CONSTRUCTION, THEN REINSTALL UPON COMPLETION OF CONSTRUCTION.

KEY PLAN



PROJECT NO. 66-03-01-03-0-003-031
MEMASI PROJECT NO. 102-2301

PLUMBING PART
PLAN - BASEMENT -
AREA A

MSHS P100-A

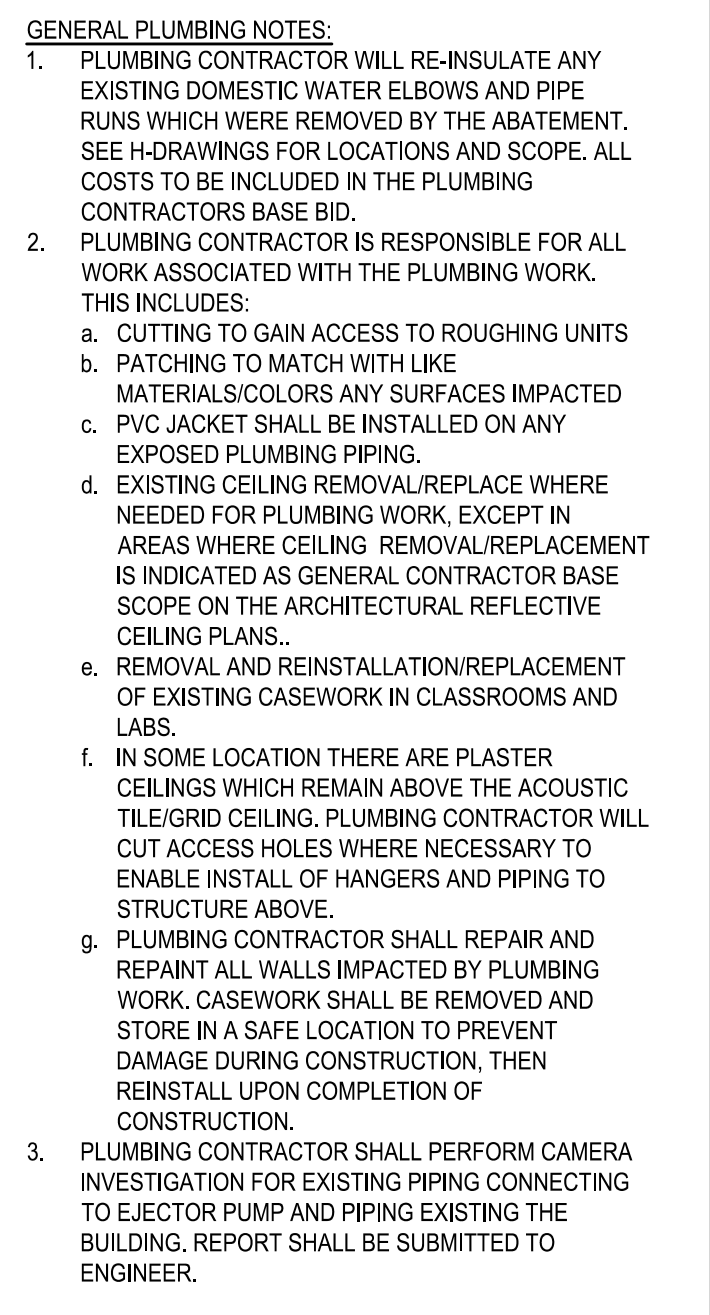
MIDDLE SCHOOL /
HIGH SCHOOL

ARCHITECT
MEMASIDESIGN
2 LYON PLACE
WHITE PLAINS, NY 10601
914.915.9519
MEMASIDESIGN.COM

STRUCTURAL CONSULTANT
REILLY TARANTINO ENGINEERING
100 PARK BLVD, SUITE 209
MASSAPEQUA PARK, NY 11762

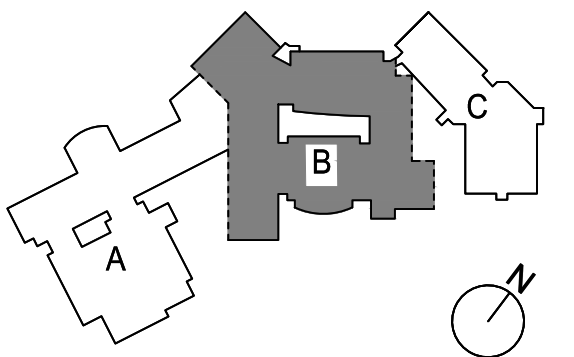
MECHANICAL/ELECTRICAL/PLUMBING CONSULTANT
STANTEC
80 OAK STREET, SUITE 400
STAMFORD, CT 06905

HAZARDOUS MATERIALS CONSULTANT
WSP
ONE PENN PLAZA
250 W 34TH ST., 4TH FLOOR
NEW YORK, NY 10014



BID SET	12/18/2023
SSEE	DATE

KEY PLAN



PROJECT NO.	66-03-01-03-0-003-031
MEMASI PROJECT NO.	102-2301

PLUMBING PART PLAN - BASEMENT - AREA B

MSHS P100-B

© 2023 MEMASI. ALL RIGHTS RESERVED

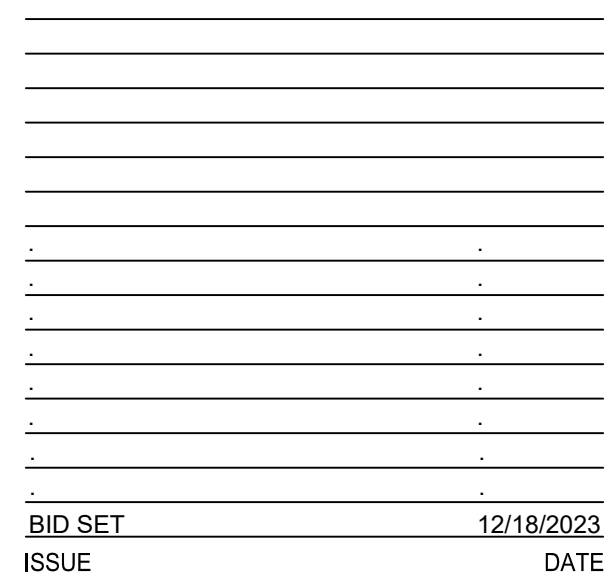
MIDDLE SCHOOL /
HIGH SCHOOL

2 LYON PLACE
WHITE PLAINS, NY 10601
914.915.9519
MEMASIDESIGN.COM

STRUCTURAL CONSULTANT
REILLY TARANTINO ENGINEERING
100 PARK BLVD, SUITE 209
MASSAPEQUA PARK, NY 11762

MECHANICAL/ELECTRICAL/PLUMBING CONSULTANT
STANTEC
30 OAK STREET, SUITE 400
STAMFORD, CT 06905

HAZARDOUS MATERIALS CONSULTANT
WSP
ONE PENN PLAZA
250 W 34TH ST., 4TH FLOOR
NEW YORK, NY 10014



PROJECT NO.	66-03-01-03-0-003-031
MEMASI PROJECT NO.	102-2301

MSHS P100-C

© 2023 MEMASI. ALL RIGHTS RESERVED.

- PLUMBING PART PLAN - BASEMENT - AREA C

$$\frac{3}{32}'' = 1'-0''$$

MIDDLE SCHOOL /
HIGH SCHOOL

MEMASI

WSP
ONE PENN PLAZA
250 W 34TH ST., 4TH FLOOR
NEW YORK, NY 10014



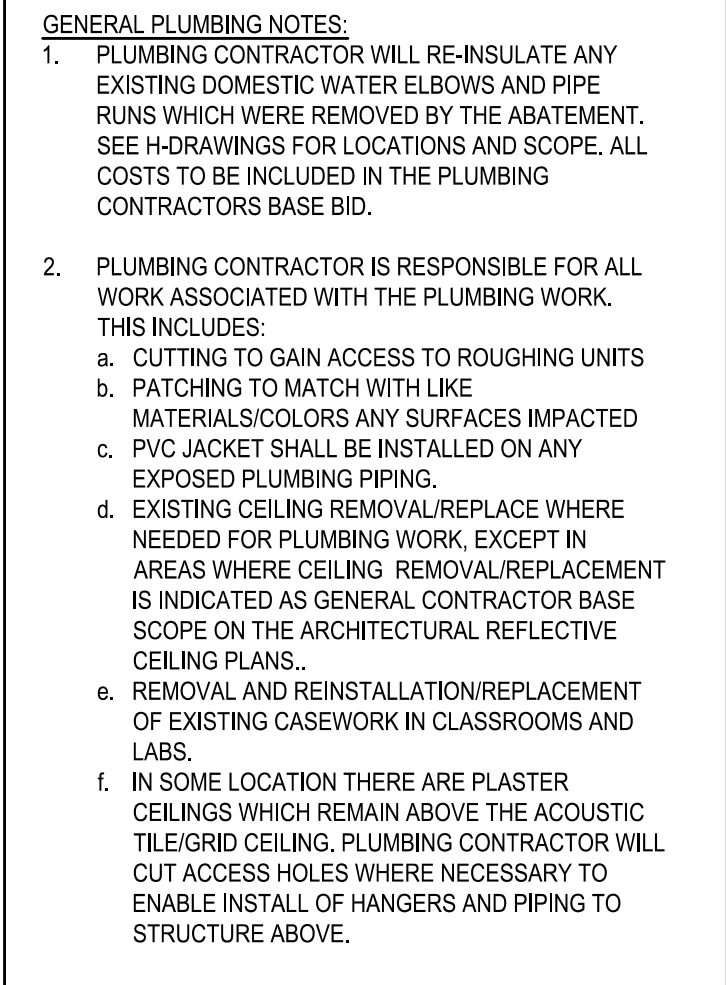
PLUMBING PART
PLAN - FIRST FLOOR
- AREA A

© 2023 MEMASI. ALL RIGHTS RESERVED.

MIDDLE SCHOOL /
HIGH SCHOOL

STRUCTURAL CONSULTANT
REILLY TARANTINO ENGINEERING
100 PARK BLVD, SUITE 209
MASSAPEQUA PARK, NY 11762

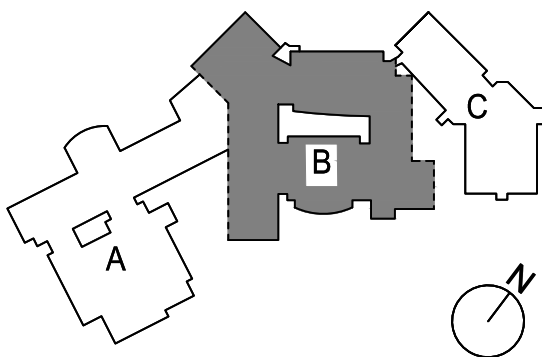
HAZARDOUS MATERIALS CONSULTANT
WSP
ONE PENN PLAZA
250 W 34TH ST., 4TH FLOOR
NEW YORK, NY 10014



PLUMBING PART PLAN - FIRST FLOOR - AREA B

BID SET	12/18/2023
SSEUE	DATE

KEY PLAN



PROJECT NO.	66-03-01-03-0-003-031
MEMASI PROJECT NO.	102-2301

PLUMBING PART
PLAN - FIRST FLOOR
- AREA B

MSHS P101-B

EASTCHESTER
UNION FREE
SCHOOL DISTRICT

2022 CAPITAL PROJECT
PHASE 3

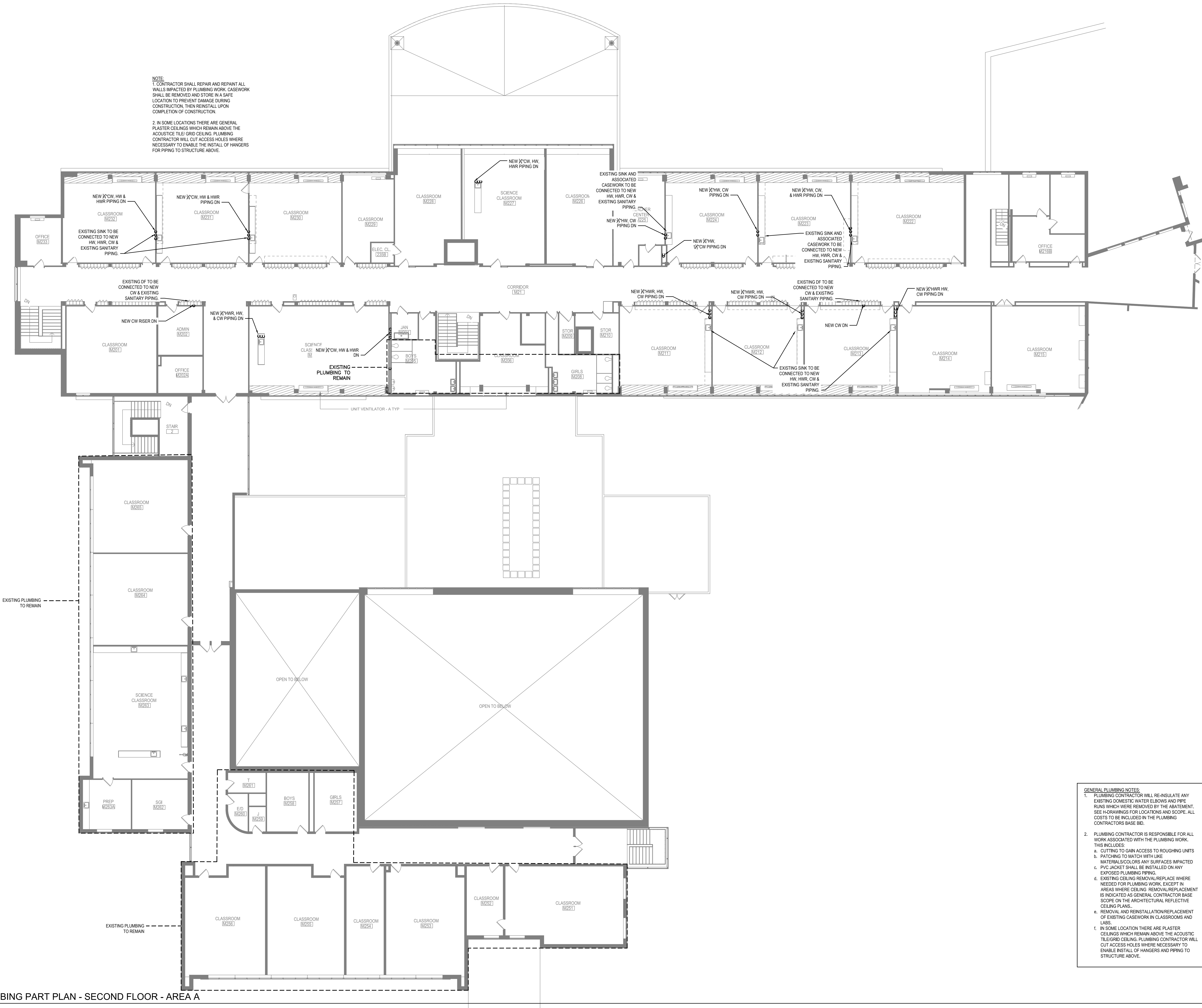
MIDDLE SCHOOL /
HIGH SCHOOL

ARCHITECT
MEMASI
2 LYON PLACE
WHITE PLAINS, NY 10601
914.915.9519
MEMASIDESIGN.COM

STRUCTURAL CONSULTANT
REILLY TARANTINO ENGINEERING
100 PARK BLVD, SUITE 209
MASSAPEQUA PARK, NY 11762

MECHANICAL/ELECTRICAL/PLUMBING CONSULTANT
STANTEC
30 OAK STREET, SUITE 400
STAMFORD, CT 06905

HAZARDOUS MATERIALS CONSULTANT
WSP
ONE PENN PLAZA
250 W 34TH ST., 4TH FLOOR
NEW YORK, NY 10014

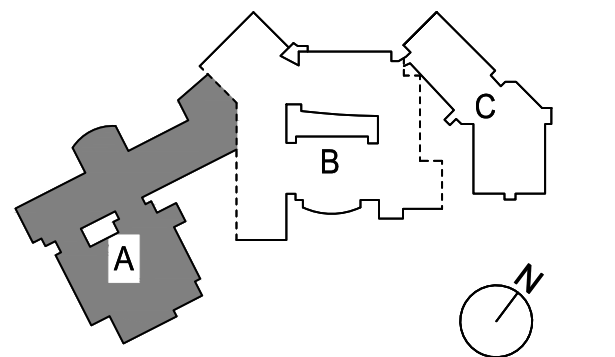


PLUMBING PART PLAN - SECOND FLOOR - AREA A

3/32" = 1'-0"

- GENERAL PLUMBING NOTES:
1. PLUMBING CONTRACTOR WILL RE-INSULATE ANY EXISTING DOMESTIC WATER ELBOWS AND PIPE RUNS WHICH WERE REMOVED BY THE ABATEMENT. SEE DRAWINGS FOR LOCATIONS AND SCOPE. ALL COSTS TO BE INCLUDED IN THE PLUMBING CONTRACTORS BASE BID.
 2. PLUMBING CONTRACTOR IS RESPONSIBLE FOR ALL WORK ASSOCIATED WITH THE PLUMBING WORK. THIS INCLUDES:
 - a. CUTTING TO GAIN ACCESS TO ROUGHING UNITS
 - b. PATCHING TO MATCH WITH LIKE MATERIALS/COLORS ANY SURFACES IMPACTED
 - c. PVC JACKET SHALL BE INSTALLED ON ANY EXPOSED PLUMBING PIPING.
 - d. EXISTING CEILING REMOVAL/REPLACE WHERE NEEDED FOR PLUMBING WORK, EXCEPT IN AREAS WHERE CEILING REMOVAL/REPLACEMENT IS INDICATED AS GENERAL CONTRACTOR BASE SCOPE ON THE ARCHITECTURAL REFLECTIVE CEILING PLANS.
 - e. REMOVAL AND REINSTALLATION/REPLACEMENT OF EXISTING CASEWORK IN CLASSROOMS AND LABS.
 - f. IN SOME LOCATION THERE ARE PLASTER CEILINGS WHICH REMAIN ABOVE THE ACOUSTIC TILE/GRID CEILING. PLUMBING CONTRACTOR WILL CUT ACCESS HOLES WHERE NECESSARY TO ENABLE INSTALL OF HANGERS AND PIPING TO STRUCTURE ABOVE.

KEY PLAN



PROJECT NO. 66-03-01-03-0-003-031
MEMASI PROJECT NO. 102-2301

**PLUMBING PART
PLAN - SECOND
FLOOR - AREA A**

MSHS P102-A

© 2023 MEMASI. ALL RIGHTS RESERVED.

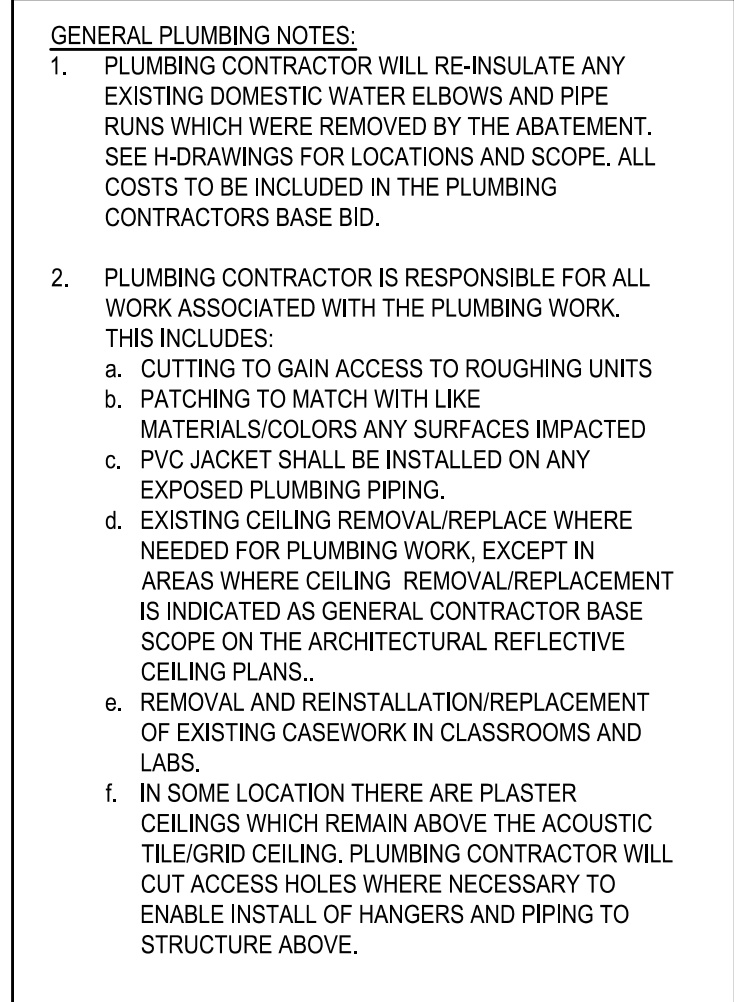
2022 CAPITAL PROJECT PHASE 3

ARCHITECT
MEMASIDESIGN
1 LYON PLACE
WHITE PLAINS, NY 10601
t44.915.9519
MEMASIDESIGN.COM

STRUCTURAL CONSULTANT
REILLY TARANTINO ENGINEERING
100 PARK BLVD, SUITE 209
MASSAPEQUA PARK, NY 11762

MECHANICAL/ELECTRICAL/PLUMBING CONSULTANT
STANTEC
100 OAK STREET, SUITE 400
STAMFORD, CT 06905

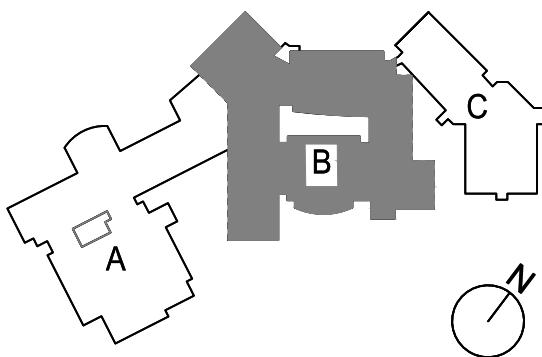
HAZARDOUS MATERIALS CONSULTANT
WSP
ONE PENN PLAZA
250 W 34TH ST., 4TH FLOOR
NEW YORK, NY 10014



PLUMBING PART PLAN - SECOND FLOOR - AREA B

BID SET	12/18/2023
ISSUE	DATE

KEY PLAN



PROJECT NO.	66-03-01-03-0-003-031
MEMASI PROJECT NO.	102-2301

PLUMBING PART
PLAN - SECOND
FLOOR - AREA B

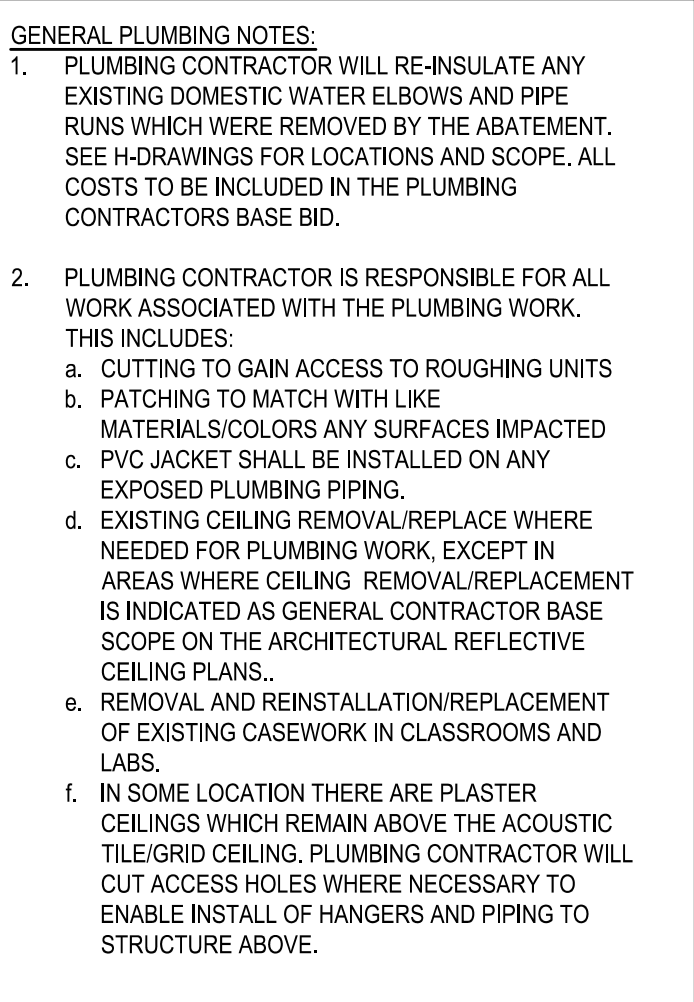
MSHS P102-B

2022 CAPITAL PROJECT PHASE 3

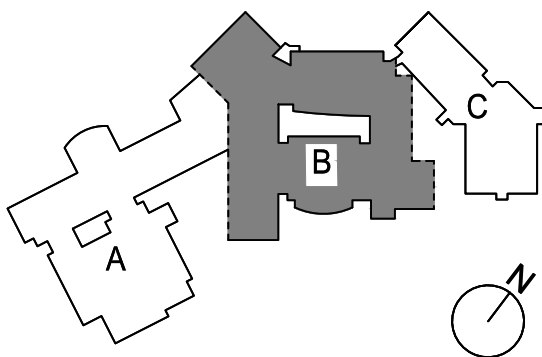
ARCHITECT
MEMASIDESIGN
1 LYON PLACE
WHITE PLAINS, NY 10601
t44.915.9519
MEMASIDESIGN.COM

MECHANICAL/ELECTRICAL/PLUMBING CONSULTANT
STANTEC
80 OAK STREET, SUITE 400
STAMFORD, CT 06905

HAZARDOUS MATERIALS CONSULTANT
WSP
ONE PENN PLAZA
250 W 34TH ST., 4TH FLOOR
NEW YORK, NY 10014


$$3/32'' = 1'-0''$$
[illegible]

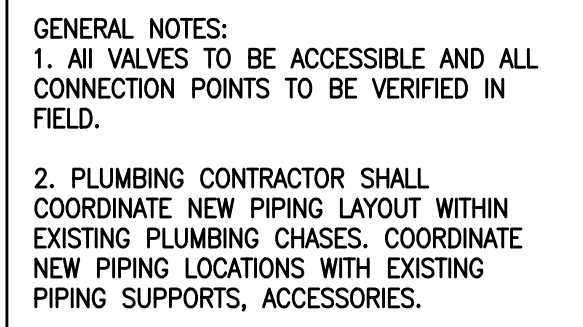
KEY PLAN



PROJECT NO.	66-03-01-03-0-003-031
MEMASI PROJECT NO.	102-2301

MSHS P103-B

© 2023 MEMASI. ALL RIGHTS RESERVED

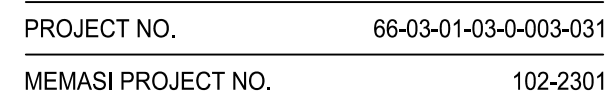


SCALE: NTS



SCALE: NTS

SCALE: NT



MSHS P501

DRAIN SCHEDULE																														
DESIGNATION	MANUFACTURER	MODEL NUMBER	DRAIN BODY SPECIFICATION								STRAINER SPECIFICATION															APPLICABLE AREAS				
			BRONZE	CAST IRON	GALVANIZED	STAINLESS STEEL	CLAMPING DEVICE	SECONDARY CLAMP	SUMP RECEIVER	ACID RESISTANT COATING	TRAP PRIMER CONNECTION	BRONZE	CAST IRON	GALVANIZED	NICKEL BRONZE	STAINLESS STEEL	CHROME PLATED	POLISHED FINISH	SATIN FINISH	SECONDARY STRAINER	SEDIMENT BUCKET	LESS GRADE	HALF GRADE	FLUSH GRADE	TRACTOR GRADE		SQUARE TOP	FUNNEL TOP	DOMED	EXTENSION
4"TD	JAY R. SMITH	2010	●						●	●				●					●		●								●	WATER SERVICE ROOMS
NOTES:																														
1. ALL FLOOR DRAINS IN FINISHED AREAS SHALL BE LOCATED AS PER THE ARCHITECTURAL DRAWINGS.																														
2. ALL FLOOR DRAINS IN MECHANICAL EQUIPMENT ROOMS, BOILER ROOMS, FAN ROOMS ETC., SHALL BE LOCATED IN COORDINATION WITH THE MECHANICAL CONTRACTOR.																														
3. THE CONTRACTOR SHALL VERIFY THE COMPATIBILITY OF THE DRAINS WITH THE APPROVED ROOFING AND/OR WATER PROOFING SYSTEMS PRIOR TO SUBMITTING SHOP DRAWINGS.																														
4. THE TOP OF ALL FLOOR DRAINS SHALL BE FLUSH WITH THE ADJACENT FINISHED FLOOR.																														
5. PROVIDE MECHANICAL SEAL TRAP GUARDS ON ALL FLOOR DRAINS UNLESS OTHERWISE NOTED.																														

PUMP SCHEDULE															
SERVICE	DESIGNATION	SIMPLEX SYSTEM	DUPILEX SYSTEM	TRIPLEX SYSTEM	EMERGENCY POWER	CAPACITY (EACH PUMP)		ELECTRICAL DATA (EACH PUMP)					PUMP SYSTEM SPECIFICATION		REMARKS
						FLOW RATE	HEAD	HP	RPM	V	PH	HZ	MANUFACTURER	MODEL NUMBER	
HOT WATER CIRCULATOR PUMP	RP-1	●				2 GPM	17 FT	1/6	1725	115	1	60	BELL & GOSSETT	SERIES PR	INSTALL TWO IN MIDDLE SCHOOL BOILER ROOM
SEWAGE EJECTOR PUMP	EJ-1		●			400 GPM	25 FT	7.4	1740	208	3	60	WIL0	6101T	EXISTING PIT SHALL BE INCREASE TO 4'x4'x5' WITH AIR TIGHT COVER.
NOTES:															
1. PLUMBING CONTRACTOR SHALL PERFORM CAMERA INVESTIGATION FOR EXISTING PIPING CONNECTING TO EJECTOR PUMP AND PIPING EXISTING THE BUILDING. REPORT SHALL BE SUBMITTED TO ENGINEER.															

BID SET	12/18/2023
ISSUE	DATE

