

**COUNTY OF WESTCHESTER  
NEW YORK**

**DIVISION OF ENGINEERING**

**ADDENDUM NO. 5**

**CONTRACT NO. 20-517**

**REHABILITATION OF GLEN ISLAND APPROACH BRIDGE  
OVER NEW ROCHELLE HARBOR (BIN 3348880)  
NEW ROCHELLE, NEW YORK**

The attention of the bidder is directed to the following changes, additions, and/or substitutions affecting the above referenced contract.

**I. RE: THE PLANS**

**REMOVE** Drawing G-04 (Sheet No. 4 of 212) and **REPLACE** with the attached Drawing G-04 (Sheet No. 4 of 212) labelled Revision No. 3.

**REMOVE** Drawing G-07 (Sheet No. 7 of 212) and **REPLACE** with the attached Drawing G-07 (Sheet No. 7 of 212) labelled Revision No. 1.

**REMOVE** Drawing S-02 (Sheet No. 48 of 212) and **REPLACE** with the attached Drawing S-02 (Sheet No. 48 of 212) labelled Revision No. 2.

**REMOVE** Drawing S-07 (Sheet No. 48 of 212) and **REPLACE** with the attached Drawing S-07 (Sheet No. 48 of 212) labelled Revision No. 1.

**REMOVE** Drawing S-09 (Sheet No. 50 of 212) and **REPLACE** with the attached Drawing S-09 (Sheet No. 50 of 212) labelled Revision No. 1.

**REMOVE** Drawing S-35 (Sheet No. 76 of 212) and **REPLACE** with the attached Drawing S-35 (Sheet No. 76 of 212) labelled Revision No. 1.

**REMOVE** Drawing S-36 (Sheet No. 77 of 212) and **REPLACE** with the attached Drawing S-36 (Sheet No. 77 of 212) labelled Revision No. 1.

**REMOVE** Drawing S-66 (Sheet No. 107 of 212) and **REPLACE** with the attached Drawing S-66 (Sheet No. 107 of 212) labelled Revision No. 1.

**REMOVE** Drawing S-68 (Sheet No. 109 of 212) and **REPLACE** with the attached Drawing S-68 (Sheet No. 109 of 212) labelled Revision No. 1.

**REMOVE** Drawing S-88 (Sheet No. 129 of 212) and **REPLACE** with the attached Drawing S-88 (Sheet No. 129 of 212) labelled Revision No. 1.

**REMOVE** Drawing A-10 (Sheet No. 142 of 212) and **REPLACE** with the attached Drawing A-10 (Sheet No. 142 of 212) labelled Revision No. 1.

**II. RE: THE SPECIFICATIONS**

**INSERT** the attached Special Notice “Insurance Requirements” labelled Addendum No. 5.

**INSERT** the attached Consolidated Edison Utility plates in the Technical Appendices.

**III. RE: REQUESTS FOR INFORMATION**

See the attached summary of comments.

ALL PROVISIONS OF THE CONTRACT NOT AFFECTED BY THE FOREGOING SHALL REMAIN IN FULL FORCE AND EFFECT.

COUNTY OF WESTCHESTER  
DEPARTMENT OF PUBLIC WORKS AND TRANSPORTATION

By: Hugh J. Greechan Jr., P.E.  
Commissioner

Dated: Thursday, April 25, 2024  
WHITE PLAINS, NEW YORK

ITEM NO.	ITEM DESCRIPTION	QTY	UNIT
201.06	CLEARING AND GRUBBING	1	LS
202.19	REMOVAL OF SUBSTRUCTURES	36	CY
202.2202	REMOVAL OF STEEL SUPPORTED STRUCTURAL SLABS (WITH SHEARCONNECTORS) - TYPE B	1069	SF
202.2302	REMOVAL OF STEEL SUPPORTED STRUCTURAL SLABS (WITHOUT SHEARCONNECTORS) - TYPE B	9615	SF
203.02	UNCLASSIFIED EXCAVATION AND DISPOSAL	1589	CY
203.03	EMBANKMENT IN PLACE	1590	CY
204.01	CONTROLLED LOW STRENGTH MATERIAL (CLSM)	76	CY
205.97200011	COUNTERWEIGHT PIT CLEANUP & DISPOSAL	1	LS
206.0201	TRENCH AND CULVERT EXCAVATION	150	CY
207.22	GEOTEXTILE DRAINAGE	363	SY
209.100101	MULCH - TEMPORARY	2420	SY
209.1003	SEED AND MULCH - TEMPORARY	2420	SY
209.13	SILT FENCE-TEMPORARY	147	LF
209.1501	TURBIDITY CURTAIN - TEMPORARY	1919	LF
209.1703	DRAINAGE STRUCTURE INLET PROTECTION, PREFABRICATED-TEMPORARY	80	LF
209.20120009	BIODEGRADABLE BIO-FIBER ROLLS 12 INCHES	483	LF
209.22	CONSTRUCTION ENTRANCE	299	SY
304.10119917	SUBBASE COURSE, TYPE 1011-2	119	CY
404.098101	9.5 F1 Top Course HMA, 80 Series Compaction	346	TON
404.198901	19 F9 BINDER COURSE ASPHALT, 80 SERIES COMPACTION	4	TON
404.378901	37.5 F9 Base Course HMA, 80 Series Compaction	69	TON
404.418901	9.5 F9 TEMPORARY TOP COURSE ASPHALT, 80 SERIES COMPACTION	138	TON
404.438901	19 F9 Temporary Binder Course HMA, 80 Series Compaction	276	TON
407.0102	DILUTED TACK COAT	339	GAL
490.30	MISCELLANEOUS COLD MILLING OF BITUMINOUS CONCRETE	3073	SY
502.9310	SEALING LONGITUDINAL JOINTS - HIGHWAY JOINT SEALER	1209	LF
520.09000010	SAW CUTTING ASPHALT CONCRETE	1291	LF
552.13	TEMPORARY STEEL SHEETING	2788	SF
555.0105	CONCRETE FOR STRUCTURES, CLASS A	19	CY
555.80020001	CRACK REPAIR BY EPOXY INJECTION (RESTORATION)	145	LF
555.81980011	CRACK REPAIR (.125 INWIDER) BY INJECTION OF PORTLAND CEMENTGROUT	503	LF
556.0202	EPOXY-COATED BAR REINFORCEMENT FOR STRUCTURES	49025	LB
557.0109	SUPERSTRUCTURE SLAB WITH INTEGRAL WEARING SURFACE - BOTTOMFORMWORK REQUIRED - TYPE 9 FRICTION	625	SY
557.30	SIDEWALKS AND SAFETY WALKS	612	SY
557.32000018	LIGHTWEIGHT HIGH-PERFORMANCE CONCRETEFOR THINSTRUCTURAL APPLICATIONS	692	SF
560.09	TUCK POINTING	11298	SF
560.10070008	CLEANING OF STONE MASONRY AND CONCRETE SURFACES	11298	SF
560.11200007	CONSTRUCT DRY STONE WALL	40	LF
560.13200007	REMOVE AND RESET STONE WALL	100	LF
560.40000008	REPAIR STONE MASONRY	2967	SF
564.510001	STRUCTURAL STEEL	392816	LB
565.1521	TYPE M.R. EXPANSION BEARING (0 TO 225 KIPS)	2	EA
565.1522	TYPE M.R. EXPANSION BEARING (226 TO 450 KIPS)	4	EA
565.1721	TYPE M.R. FIXED BEARING (0 TO 225 KIPS)	2	EA
565.1722	TYPE M.R. FIXED BEARING (226 TO 450 KIPS)	2	EA
567.60	ARMORLESS BRIDGE JOINT SYSTEM	70	LF
568.53	STEEL BRIDGE RAILING (TWO RAIL) WITH HANDRAIL	623	LF
568.70	TRANSITION BRIDGE RAILING	100	LF
570.01	LEAD EXPOSURE CONTROL PLAN	1	LS
570.02	MEDICAL TESTING	6825	DC
570.03	PERSONAL EXPOSURE MONITORING SAMPLE ANALYSIS	6510	DC
570.04	DECONTAMINATION FACILITIES	26	CW
570.150001	CLASS A CONTAINMENT FOR PAINT REMOVAL	1	LS
571.03	DISPOSAL OF HAZARDOUS PAINT WASTE CONTAINING LEAD	993	LB
571.04	DISPOSAL OF NON-HAZARDOUS INDUSTRIAL SOLID PAINT WASTE	53	LB
572.010001	STRUCTURAL STEEL PAINT SYSTEM: SHOP APPLIED	33574	SF
573.010001	STRUCTURAL STEEL PAINTING FIELD APPLIED, TOTAL REMOVAL	1	LS
576.01	SCUPPERS (TYPE A)	4	EA
581.01	REMOVAL OF BITUMINOUS CONCRETE OVERLAY (BRIDGE)	11285	SF
581.02	REMOVAL OF CEMENT CONCRETE OVERLAY (BRIDGE)	3537	SF
582.05	REMOVAL OF STRUCTURAL CONCRETE- REPLACEMENT WITH CLASS ACONCRETE	26	CY
582.06	REMOVAL OF STRUCTURAL CONCRETE - REPLACEMENT WITH CLASSD CONCRETE	104	SF
582.07	REMOVAL OF STRUCTURAL CONCRETE - REPLACEMENT WITH VERTICALAND OVERHEAD PATCHING MATERIAL	50	SF
584.310908	OVERLAY CONCRETE - CLASS DP - TYPE 9 FRICTION	245	SY
585.01	STRUCTURAL LIFTING OPERATIONS - TYPE A	10	EA
586.05	REMOVAL OF RIVETS - REPLACEMENT WITH HIGH STRENGTH BOLTS	4372	EA
586.10	FIELD DRILL HOLES IN EXISTING STRUCTURAL STEEL	863	EA
589.010001	REMOVAL OF EXISTING STEEL	267020	LB
589.520001	REMOVAL OF EXISTING STEEL	10	EA
594.11000010	FIBERGLASS REINFORCED PLASTIC (FRP) COMPOSITE LUMBERFOR BRIDGE FENDER	133	LF
595.98200018	SPRAY-APPLIED, WATERPROOFING MEMBRANE	16592	SF
596.01	OPEN STEEL FLOOR	103	SF
596.122010WE	STEEL GRID DECK	1586	SF
599.061001WE	REHABILITATE BUILDING INTERIOR	1	LS
599.061201WE	REHABILITATE SPAN DRIVE MANCHINERY	1	LS
599.061202WE	REFURBISH TRUINONS	1	LS
599.061203WE	MACHINERY FIELD PAINTING	1	LS
599.061204WE	SERVICE REDUCERS	1	LS
599.061205WE	REPLACE SPAN LOCKS AND MISCELLANEOUS REPAIRS	1	LS
599.061206WE	PERMANENT BRIDGE OPERATION AND MAINTENANCE	28	MONTHS
599.061301WE	BRIDGE BALANCE	1	LS
599.061701WE	CONTROL HOUSE HVAC	1	LS
599.061801WE	CONTROL HOUSE PLUMBING	1	LS
599.061802WE	COUNTERWEIGHT PIT DEWATERING	1	LS

2

2

2

3

3

1

IN CHARGE OF D. DELUCA, PE  
CHECKED BY J. WARNCKE, PE  
MADE BY N. HYSON, PE

1	3/30/24	NMH	DD	PAY ITEM ADDED
2	4/12/24	NMH	DD	ADDENDUM #4 REVISIONS
3	4/24/24	NMH	DD	ADDENDUM #5 REVISIONS
REVISION NUMBER	DATE	MADE BY	APP'D BY	REVISION

RECORD DRAWING CERTIFICATION			
<input type="checkbox"/> AS BUILT – CHANGES AS NOTED			
<input type="checkbox"/> AS BUILT – NO CHANGES			
CONTRACTOR		PROJECT COORDINATOR	
NAME		NAME	
SIGNATURE		SIGNATURE	
TITLE	DATE	TITLE	DATE

ITEM NO.	ITEM DESCRIPTION	QTY	UNIT
599.063000WE	BRIDGE ELECTRICAL AND CONTROL SYSTEM	1	LS
599.064000WE	MOVABLE BRIDGE ELECTRICAL TESTING	1	LS
599.142500WE	MOVABLE BRIDGE SUBMARINE CABLE AND HDPE DUCTS	1	LS
599.142600WE	MOVABLE BRIDGE SUBMARINE CABLE AND HDPE DUCTS INSTALLATION	1	LS
599.20200010	REMOVAL OF EXISTING WARNING GATES AND BIKEWAY GATES	1	LS
604.07210110	RESETTING EXISTING DRAINAGE FRAMES ON EXISTING DRAINAGESTRUCTURES	8	EA
605.16010008	NON-PERFORATED PVC PIPE, 4" DIAMETER PIPE	93	LF
607.0512	VINYL COATED STEEL CHAIN-LINK FENCE ON PLASTIC COATED FRAMEWITH TOP RAIL 6 FEET HIGH	190	LF
607.99870011	REMOVE EXISTING CHAIN-LINK FENCE	190	LF
608.0101	CONCRETE SIDEWALKS AND DRIVEWAYS	7	CY
608.01050109	CURB RAMP CONFIGURATION TYPE 1	1	EA
608.01050209	CURB RAMP CONFIGURATION TYPE 2	2	EA
608.01050309	CURB RAMP CONFIGURATION TYPE 3	5	EA
608.01051409	CURB RAMP CONFIGURATION TYPE 14	1	EA
608.020102	ASPHALT SIDEWALKS, DRIVEWAYS AND BICYCLE PATHS,AND VEGETATION CONTROL STRIPS	216	TON
609.0401	CAST-IN-PLACE CONCRETE CURB TYPE VF6	735	LF
609.06000008	CURB REMOVAL	1419	LF
609.40000015	REINFORCED PRECAST CONCRETE PARKING BLOCKS	20	EA
610.1402	TOPSOIL - ROADSIDE	318	CY
610.1601	TURF ESTABLISHMENT - ROADSIDE	242	SY
610.1602	TURF ESTABLISHMENT - LAWNS	2377	SY
610.18	SODDING	2377	SY
611.0161	PLANTING - MAJOR DECIDUOUS TREES - 2 1/2 INCH CALIPER BALL& BURLAP, FIELD POTTED OR FIELD BOXED	3	EA
611.0171	PLANTING - MAJOR DECIDUOUS TREES - 3 INCH CALIPER BALL& BURLAP, FIELD POTTED OR FIELD BOXED	3	EA
619.01	BASIC WORK ZONE TRAFFIC CONTROL	1	LS
619.04	TYPE III CONSTRUCTION BARRICADE	6	EA
619.0501	TEMPORARY STRUCTURES AND APPROACHES NO 1	1	LS
619.07010001	PLASTIC CONSTRUCTION DRUMS (EACH)	20	EA
619.0901	TEMPORARY PAVEMENT MARKINGS STRIPES (TRAFFIC PAINT)	3400	LF
619.110722	(PVMS) LARGE SIZE - FULL MATRIX (LED) RADAR, CELLULARCOMMUNICATIONS	2	EA
619.1714	Temporary Positive Barrier - Category 4 (Pinning Permitted)	100	LF
619.1716	Temporary Positive Barrier - Category 6 (Pinning Required)	400	LF
620.05	STONE FILLING (HEAVY)	242	CY
620.0801	BEDDING MATERIAL, TYPE 1	120	CY
621.04	CLEANING DRAINAGE STRUCTURES	8	EA
623.11	CRUSHED GRAVEL (IN-PLACE MEASURE)	311	CY
634.80210001	REFURBISH ORNAMENTAL RAILING SYSTEM	654	LF
634.99020017	VIBRATION MONITORING (NONBLASTING)	1	LS
639.22010011	CPM PROGRESS SCHEDULE - TYPE 2A	1	LS
645.52020110	Ground-Mount Sign Panel 30 SF or Less High Visb Sh Non-Retroreflect Sheet, Powder Coat Stiffener, Bracket, Misc Hrdware	39	SF
645.81	TYPE A SIGN POSTS	8	EA
647.51	REMOVE AND DISPOSE SIGN PANEL, SIGN PANEL ASSEMBLY SIZE I(UNDER 30 SQUARE FEET)	7	EA
648.06	DRILL HOLE, 4 INCH DIAMETER 0 TO 50 FOOT DEPTH RANGE	497	LF
648.15	ROCK CORE DRILLING NX	199	LF
648.17	FURNISHING EQUIPMENT FOR MAKING BORINGS	3	EA
648.19	FURNISHING EQUIPMENT FOR MAKING BORINGS ON WATER USINGSTATIONARY PLATFORM	6	EA
655.05020008	WATERTIGHT SANITARY MANHOLE FRAMES AND COVERS (CASTINGS)	1	EA
660.93000008	FURNISH AND INSTALL SANITARY SEWER LATERALS	2	EA
660.97020011	SANITARY SEWER CLEANOUTS	1	LS
660.97100010	PRECAST SANITARY SEWER MANHOLE	1	LF
663.0604	COPPER WATER SERVICE PIPE 1"	10	LF
663.2504	WATER SERVICE CONNECTION, 1"	1	EA
663.2604	CURB STOP & CURB BOX, 1"	1	EA
663.530000004	REPLACE EXISTING WATER VALVE BOX TOP SECTION	1	EA
664.01060004	DUCTILE IRON SEWER PIPE & FITTINGS, 6"	322	LF
664.40480006	PRECAST SANITARY SEWER MANHOLE (48 INCH DIA.)	10	LF
670.60	PHOTOELECTRIC CONTROLS	1	EA
670.81	REMOVE AND DISPOSE OF LAMPPOST ASSEMBLY	20	EA
680.01040015	TRAFFIC SIGNAL SYSTEM	1	LS
680.10000007	INSTALL TRAFFIC SIGNAL POLE ALL SIZES	3	EA
680.621630	TRAFFIC SIGNAL POLE, MAST ARM, 16 FEET MOUNTING HEIGHT,30 FEET ARM LENGTH	1	EA
680.6712	TRAFFIC SIGNAL POLE-POST TOP MOUNT 12 FEET MOUNTING HEIGHT	2	EA
680.7930001	REMOVE TRAFFIC SIGNAL HEAD OR PEDESTRIAN SIGNAL HEAD	4	EA
680.810101	TRAFFIC SIGNAL MODULE - 12 INCH, RED BALL, LED	4	EA
680.810103	TRAFFIC SIGNAL MODULE - 12 INCH, YELLOW BALL, LED	4	EA
680.810105	TRAFFIC SIGNAL MODULE - 12 INCH, GREEN BALL, LED	4	EA
680.810107	TRAFFIC SIGNAL SECTION - TYPE I, 12 INCH	4	EA
680.810308	INSTALL BALL/ARROW LED TRAFFIC SIGNAL MODULE	4	EA
680.8111	TRAFFIC SIGNAL BRACKET ASSEMBLY - 1 WAY	2	EA
680.8220	FLASHING BEACON SIGN ASSEMBLY	2	EA
680.82250301	REMOVE STEEL EMBEDDED TRAFFIC SIGNAL POLE	4	EA
683.090700WE	MOVABLE BRIDGE STANDBY GENERATOR	1	LS
685.07200110	WHITE EPOXY REFLECTORIZED PAVEMENT STRIPES - 20 MILS(WET NIGHT VISIBILITY SPHERES)	1207	LF
685.07200410	WHITE EPOXY REFLECTORIZED PAVEMENT STRIPES (CROSS HATCHING)20 MILS THICK (WET NIGHT VISIBILITY SPHERES)	322	LF

2



CONSULTANT INFORMATION

1501 BROADWAY, SUITE 601  
NEW YORK, NY 10036  
(212) 944-1150

WESTCHESTER COUNTY, NEW YORK  
DEPARTMENT OF PUBLIC WORKS AND TRANSPORTATION  
DIVISION OF ENGINEERING

Rehabilitation of Glen Island Approach Bridge  
over New Rochelle Harbor, City of New Rochelle  
GENERAL

DETAILED ESTIMATE SHEET

CONTRACT NUMBER  
20-517

SHEET NUMBER  
G-04

SHEET NO. 4 OF 212

SCALE: AS SHOWN  
DATE: 03/08/2024  
DPW FILE NO.

REV. NO. 3

5-04-G-439-0



## FENDER SYSTEM

1. U.S. COAST GUARD NOTIFICATION: NOTIFY THE LOCAL OFFICE OF THE U.S. COAST GUARD AT LEAST 30 DAYS PRIOR TO BEGINNING OF CONSTRUCTION OF THE FENDER SYSTEM.
2. WALES: PROVIDE REINFORCED THERMOPLASTIC STRUCTURAL SHAPES FOR WALES. PROVIDE CONTINUOUS WALES WITH SPLICES ONLY AT LOCATIONS SHOWN ON THE PLANS.
3. FRP DECKING FOR CATWALKS: PROVIDE 2" X 12" (NOMINAL) THERMOPLASTIC STRUCTURAL SHAPES FOR DECKING FOR CATWALKS IN ACCORDANCE WITH SPECIAL SPECIFICATIONS ITEM# 594.11000010. INSTALL DECKING ACCORDING TO MANUFACTURER'S RECOMMENDATIONS USING STAINLESS STEEL #10 X 3" (MINIMUM) DECK SCREWS.
4. USE MIN.  $\frac{7}{8}$ " DIA. BOLTS FOR FRP CONNECTIONS, U.O.N. BOLTS THROUGH A VERTICAL PLANE FAYING SURFACE SHALL BE INSTALLED WITH THE BOLT HEAD FACING THE CHANNEL. BOLT HEADS ON THE CHANNEL FACE SHALL BE RECESSED
5. BOLTS, THREADED BARS, NUTS, SCREWS AND WASHERS: FURNISH STAINLESS STEEL BOLTS IN ACCORDANCE WITH ASTM F593 TYPE 316. FURNISH STAINLESS STEEL THREADED BARS IN ACCORDANCE WITH ASTM A193 GRADE B8M. FURNISH STAINLESS STEEL NUTS IN ACCORDANCE WITH ASTM F594 TYPE 316. FURNISH STAINLESS STEEL SCREWS IN ACCORDANCE WITH ASTM F593 TYPE 305. FURNISH STAINLESS STEEL WASHERS COMPATIBLE WITH BOLTS, THREADED RODS AND NUTS UNDER HEADS AND NUTS. TORQUE NUTS ON 1" DIAMETER BOLTS AND THREADED BARS TO 150 LB-FT. KEEP THE THREADS ON BOLTS, THREADED BARS AND NUTS FREE FROM DIRT, COARSE GRIME AND SAND TO PREVENT GALLING AND SEIZING DURING TIGHTENING. RECESS HARDWARE A MINIMUM OF  $\frac{1}{2}$ " FROM FRONT FACE OF WALES.
6. WALE SPLICE PLATES: PROVIDE FRP OR STAINLESS STEEL WALE SPLICE PLATES. STAINLESS STEEL WALE SPLICE PLATES SHALL BE IN ACCORDANCE WITH ASTM A240 TYPE 316. FRP WALE SPLICE PLATES SHALL BE IN ACCORDANCE WITH SPECIAL SPECIFICATIONS ITEM 594.11000010.





## PERMITS

1. THE CONTRACTOR IS RESPONSIBLE FOR OBTAINING ANY AND ALL APPLICABLE PERMITS REQUIRED FOR THE WORK INCLUDED IN THIS PROJECT. THE DEC/ACOE JOINT APPLICATION, USCG BRIDGE PERMIT AND SHPO APPROVAL DOCUMENTS HAVE BEEN PREPARED AND FURNISHED AS SUPPLEMENTARY CONTRACT DOCUMENTS. UNDER NO CIRCUMSTANCE SHALL THE CONTRACTOR DEVIATE FROM THE PARAMETERS OF THE PERMITS WITHOUT PRIOR WRITTEN APPROVAL FROM THE RESPECTIVE PERMITTING AUTHORITY.
2. NO FILL, EMBANKMENT OR EXCAVATION MATERIAL IS PERMITTED TO BE PLACED OR STORED BELOW THE MEAN HIGH WATER (MHW) LINE.
3. ALL ACTIVITIES INVOLVING BENTHIC DISTURBANCE INCLUDING BUT NOT LIMITED TO PILE DRIVING, CAISSON CONSTRUCTION, SUBMARINE CABLE REPLACEMENT AND ANCHORING TO THE HARBOR FLOOR ARE SUBJECT TO A TIME OF YEAR RESTRICTION FOR SUMMER AND WINTER FLOUNDER. THESE ACTIVITIES SHALL BE PERFORMED BETWEEN OCTOBER 1ST AND JANUARY 15TH. SEE DEC PERMIT FOR MORE INFORMATION.
4. NO MORE THAN 150CY SHALL BE EXCAVATED FROM THE FLOOR OF THE NEW ROCHELLE HARBOR. SEE DEC PERMIT FOR ADDITIONAL INFORMATION.

IN CHARGE OF D. DELUCA, PE  
CHECKED BY J. WARNCKE, PE  
MADE BY N. HYSOON, PE

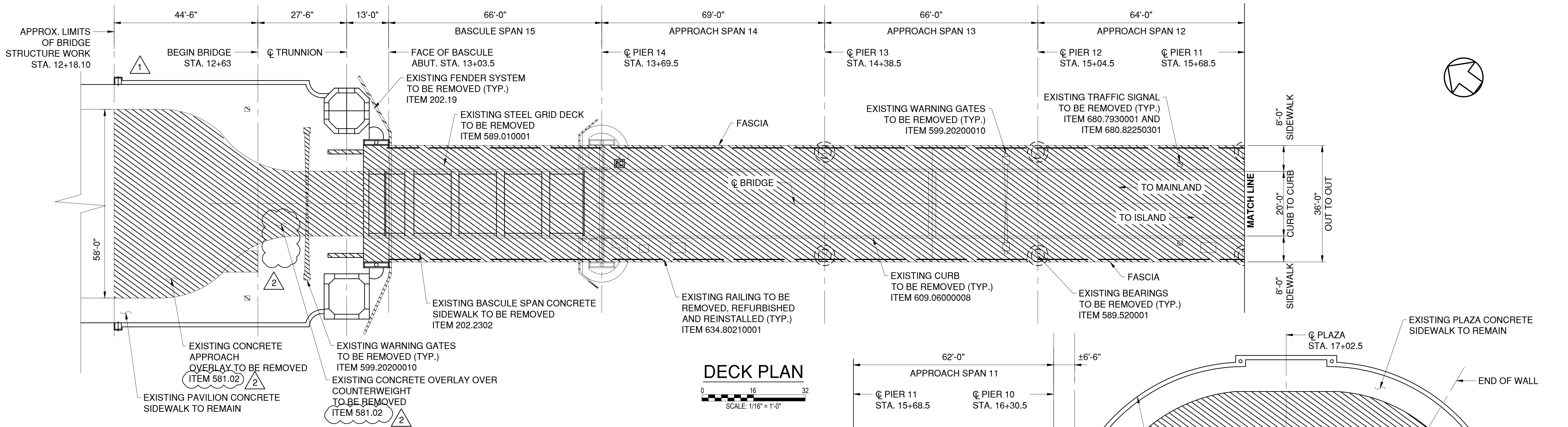
1	4/24/24	NMH	DD	FRP RAILING NOTE REVISED
REVISION NUMBER	DATE	MADE BY	APP'D BY	REVISION

RECORD DRAWING CERTIFICATION	
<input type="checkbox"/> AS BUILT — CHANGES AS NOTED <input type="checkbox"/> AS BUILT — NO CHANGES	
CONTRACTOR	PROJECT COORDINATOR
NAME _____	NAME _____
SIGNATURE _____	SIGNATURE _____
TITLE _____ DATE _____	TITLE _____ DATE _____

CONSULTANT SEAL 	CONSULTANT INFORMATION  		1501 BROADWAY, SUITE 601 NEW YORK, NY 10036 (212) 944-1150
--	--------------------------------	---	--

<b>WESTCHESTER COUNTY, NEW YORK</b> <b>DEPARTMENT OF PUBLIC WORKS AND TRANSPORTATION</b> DIVISION OF ENGINEERING		CONTRACT NUMBER 20-517	SHEET NUMBER G-07
Rehabilitation of Glen Island Approach Bridge over New Rochelle Harbor, City of New Rochelle GENERAL		SHEET NO. 7 OF 212  SCALE: AS SHOWN DATE: 03/08/2024	
<b>GENERAL NOTES - 3</b>		DPW FILE NO.  5-04-G-442-0	REV. NO. 1

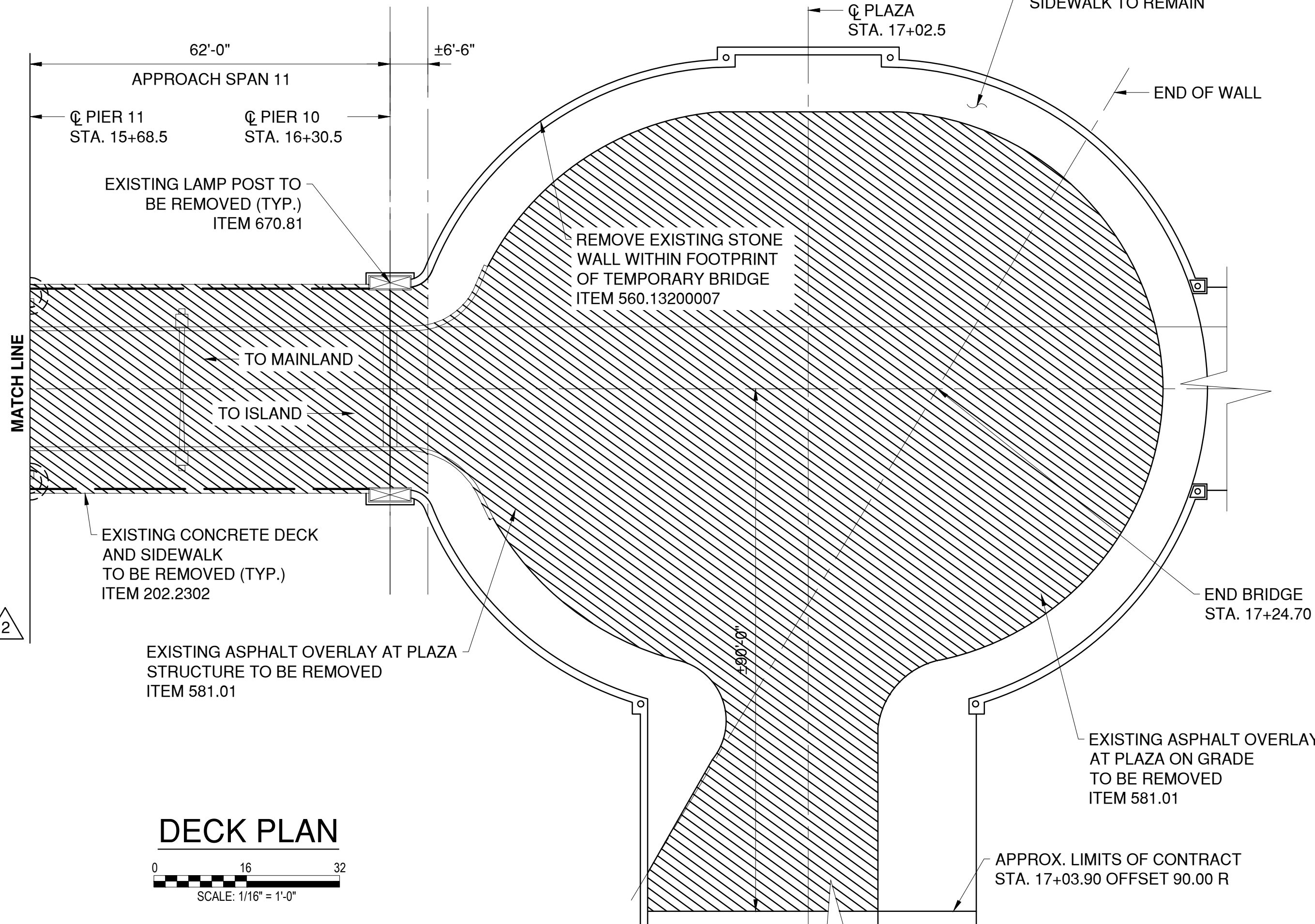




DEMOLITION NOTES:

- THE INFORMATION PRESENTED ON THE DEMOLITION PLANS IS FOR INFORMATION PURPOSES. THE CONTRACTOR SHALL VISIT THE SITE PRIOR TO SUBMITTING BIDS TO ASCERTAIN THE EXTENT OF WORK.
- LOCATION OF ALL EXISTING UTILITIES SHALL BE VERIFIED BY THE CONTRACTOR PRIOR TO ANY DEMOLITION WORK. EXISTING UTILITIES TO BE RELOCATED SHALL BE DONE PRIOR TO ANY REMOVAL ACTIVITY. ALL PRECAUTIONS SHALL BE TAKEN TO PROTECT ALL UTILITIES TO REMAIN IN ACCORDANCE WITH THE REQUIREMENTS OF THE UTILITY OWNERS.
- ALL REMOVED MATERIALS SHALL BECOME THE PROPERTY OF THE CONTRACTOR AND SHALL BE LEGALLY DISPOSED OF OFF-SITE.
- EXTREME CARE SHALL BE TAKEN DURING REMOVAL OR OTHER DEMOLITION OPERATIONS AS TO NOT DAMAGE ANY OF THE EXISTING STRUCTURE WHICH IS TO REMAIN. DAMAGES, IF ANY, SHALL BE REPAIRED TO THE SATISFACTION OF THE ENGINEER AT NO ADDITIONAL COST TO THE COUNTY.
- ANY AND ALL TEMPORARY DISTURBANCES TO THE EXISTING SITE CONDITIONS REQUIRED IN ORDER TO PERFORM DEMOLITION ACTIVITIES SHALL BE RESTORED TO ORIGINAL CONDITION AS DIRECTED BY AND TO THE SATISFACTION OF THE ENGINEER.
- CLEAN AND PUMP OUT ALL DEBRIS, SLUDGE, WATER, AND WASTE IN THE COUNTERWEIGHT PIT. REFER TO PLUMBING DRAWINGS AND SPECIFICATIONS.

APPROXIMATE DEMOLITION QUANTITIES			
REMOVAL ITEM	UNIT	QUANTITY	
ITEM 202.2202: APPROACH SPAN CONCRETE DECK, SIDEWALKS	SF	1069	
ITEM 202.2302: APPROACH SPAN CONCRETE DECK, SIDEWALKS	SF	9615	
ITEM 205.97200011: COUNTERWEIGHT PIT CLEANUP & DISPOSAL	LS	1	
ITEM 560.13200007: STONE MASONRY WALL	LF	100	
ITEM 581.01: PLAZA OVERLAY	SF	11285	
ITEM 581.02: APPROACH SLAB AND DECK OVER COUNTERWEIGHT	SF	3537	
ITEM 589.010001: STEEL GRID DECK, FLOOR BEAMS, STRINGERS	LB	267020	
ITEM 589.520001: GIRDER BEARINGS	EA	10	
ITEM 599.20200010: WARNING GATES	LS	1	
ITEM 609.06000008: CURB REMOVAL	LF	1419	
ITEM 634.80210001: PEDESTRIAN RAILING	LF	654	
ITEM 680.7930001: SIGNAL HEAD REMOVAL	EA	4	
ITEM 680.82250301: SIGNAL POLE REMOVAL	EA	4	
ITEM 670.81: LAMP POST REMOVAL	EA	20	



LEGEND

 DENOTES REMOVAL

IN CHARGE OF D. DELUCA, PE  
CHECKED BY J. WARNCKE, PE  
MADE BY N. HYSON, PE

1	4/12/24	NH	DD	SIDEWALK DEMO FOR SEWER
2	4/24/24	NH	DD	OVERLAY DEMO CLARIFIED
REVISION NUMBER	DATE	MADE BY	APP'D BY	REVISION

RECORD DRAWING CERTIFICATION			
<input type="checkbox"/> AS BUILT – CHANGES AS NOTED <input type="checkbox"/> AS BUILT – NO CHANGES			
CONTRACTOR		PROJECT COORDINATOR	
NAME _____	NAME _____	NAME _____	NAME _____
SIGNATURE _____	SIGNATURE _____	SIGNATURE _____	SIGNATURE _____
TITLE _____	TITLE _____	TITLE _____	TITLE _____

CONSULTANT SEAL



CONSULTANT INFORMATION



1501 BROADWAY, SUITE 601  
NEW YORK, NY 10036  
(212) 944-1150

WESTCHESTER COUNTY, NEW YORK  
DEPARTMENT OF PUBLIC WORKS AND TRANSPORTATION  
DIVISION OF ENGINEERING

Rehabilitation of Glen Island Approach Bridge  
over New Rochelle Harbor, City of New Rochelle

STRUCTURAL

**DEMOLITION PLAN - BRIDGE**

CONTRACT NUMBER  
20-517

SHEET NUMBER  
S-02

SHEET NO. 43 OF 212

SCALE: AS SHOWN  
DATE: 03/08/2024

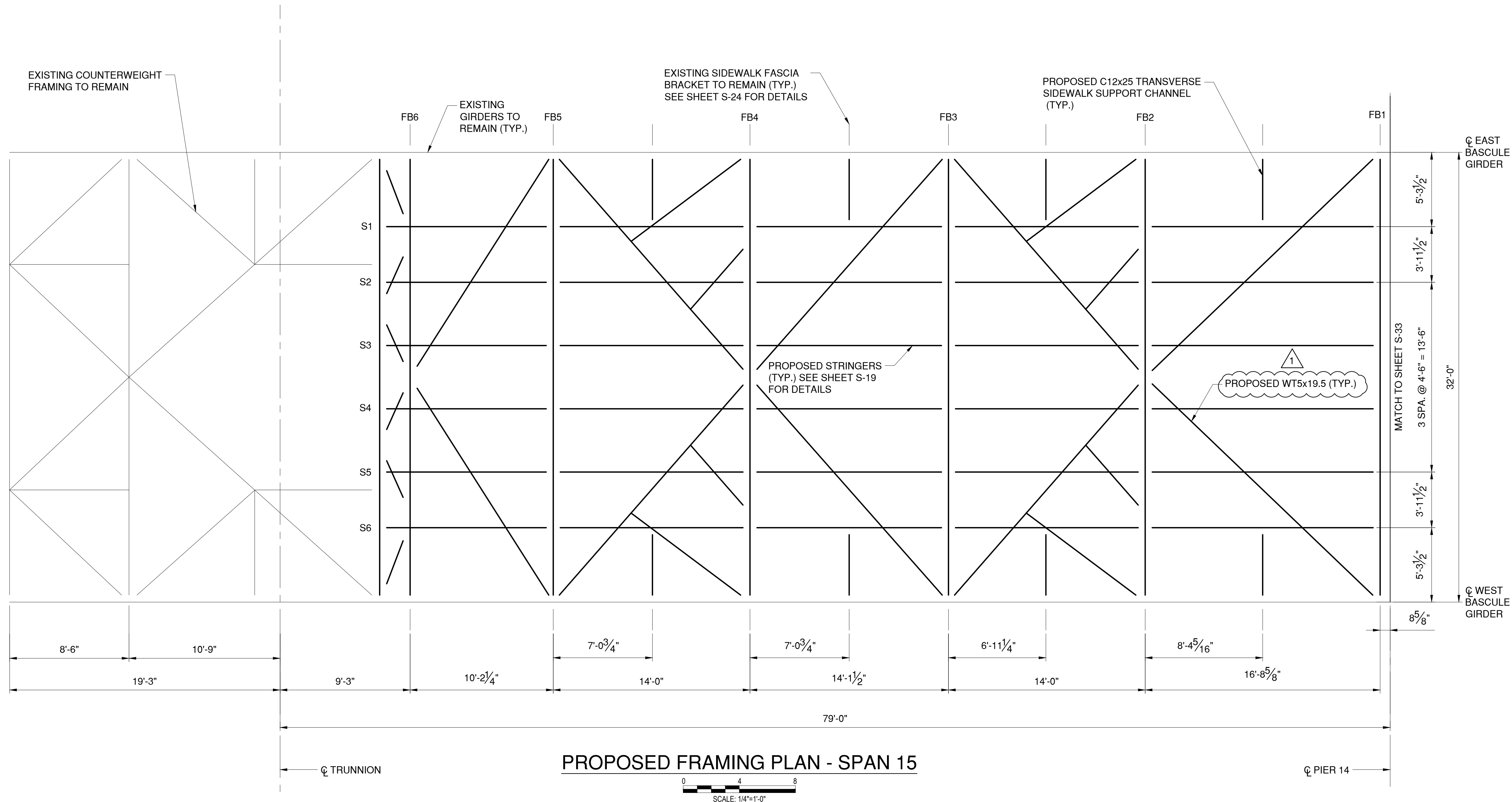
DPW FILE NO.  
5-04-R-478-0

REV. NO.  
2



CONTRACT NUMBER 20-517	SHEET NUMBER S-07
SHEET NO. 48 OF 212	
SCALE: AS SHOWN DATE: 03/08/2024	
DPW FILE NO. 5-04-S-483-0	REV NO. 1





1. FOR ADDITIONAL STRUCTURAL STEEL NOTES, SEE SHEET G-05.
2. ALL STRUCTURAL STEEL AND CONNECTIONS SHALL BE INCLUDED IN AND MEET THE REQUIREMENTS OF ITEM 564.510001.
3. REMOVAL OF EXISTING STEEL TO BE PAID FOR UNDER ITEM 589.010001.
4. ALL FLOOR BEAM CONNECTIONS TO EXISTING BASCULE GIRDERS SHALL UTILIZE THE EXISTING HOLE PATTERNS ON THE BASCULE GIRDERS.
5. CONNECTIONS TO BASCULE GIRDERS VARY BY LOCATION. CONTRACTOR TO FIELD VERIFY EXISTING RIVET SPACING AT LOCATIONS OF NEW BOLTS IN EXISTING HOLES WITH RIVETS. CONTRACTOR TO FIELD VERIFY HEIGHTS OF CONNECTION ANGLES AND CONNECTION FILL PLATES.
6. AT LOCATIONS OF BASCULE GIRDER SPLICE PLATES, DRIFT PINS SHALL BE USED WHEN REPLACING FLOOR BEAM CONNECTION ANGLES AND SIDEWALK BRACKET CONNECTION ANGLES. REPLACE RIVETS ONE-FOR-ONE WITH DRIFT PINS DURING REMOVAL OF EXISTING CONNECTION ANGLES. REPLACE RIVETS WITH H.S. BOLTS DURING INSTALLATION OF PROPOSED ANGLES. ANGLES SHALL BE REMOVED AND INSTALLED AT A TIME PER FLOOR BEAM LOCATION.

- 

IN CHARGE OF D. DELUCA, PE  
CHECKED BY J. WARNCKE, PE  
MADE BY N. HYSON, PE

1	4/24/24	NMH	DD	LATERAL BRACING SECTION	RECORD DRAWING CERTIFICATION		WESTCHESTER COUNTY, NEW YORK DEPARTMENT OF PUBLIC WORKS AND TRANSPORTATION DIVISION OF ENGINEERING		CONTRACT NUMBER 20-517	SHEET NUMBER S-09
					<input type="checkbox"/> AS BUILT – CHANGES AS NOTED <input type="checkbox"/> AS BUILT – NO CHANGES				SHEET NO. 50 OF 212	
					CONTRACTOR		PROJECT COORDINATOR		Rehabilitation of Glen Island Approach Bridge over New Rochelle Harbor, City of New Rochelle	
					NAME _____ SIGNATURE _____ TITLE _____ DATE _____		NAME _____ SIGNATURE _____ TITLE _____ DATE _____		SCALE: AS SHOWN DATE: 03/08/2024 DPW FILE NO. _____	
REVISION NUMBER	DATE	MADE BY	APP'D BY	REVISION			STRUCTURAL		BASCULE SPAN PROPOSED FRAMING PLAN 5-04-S-485-0	

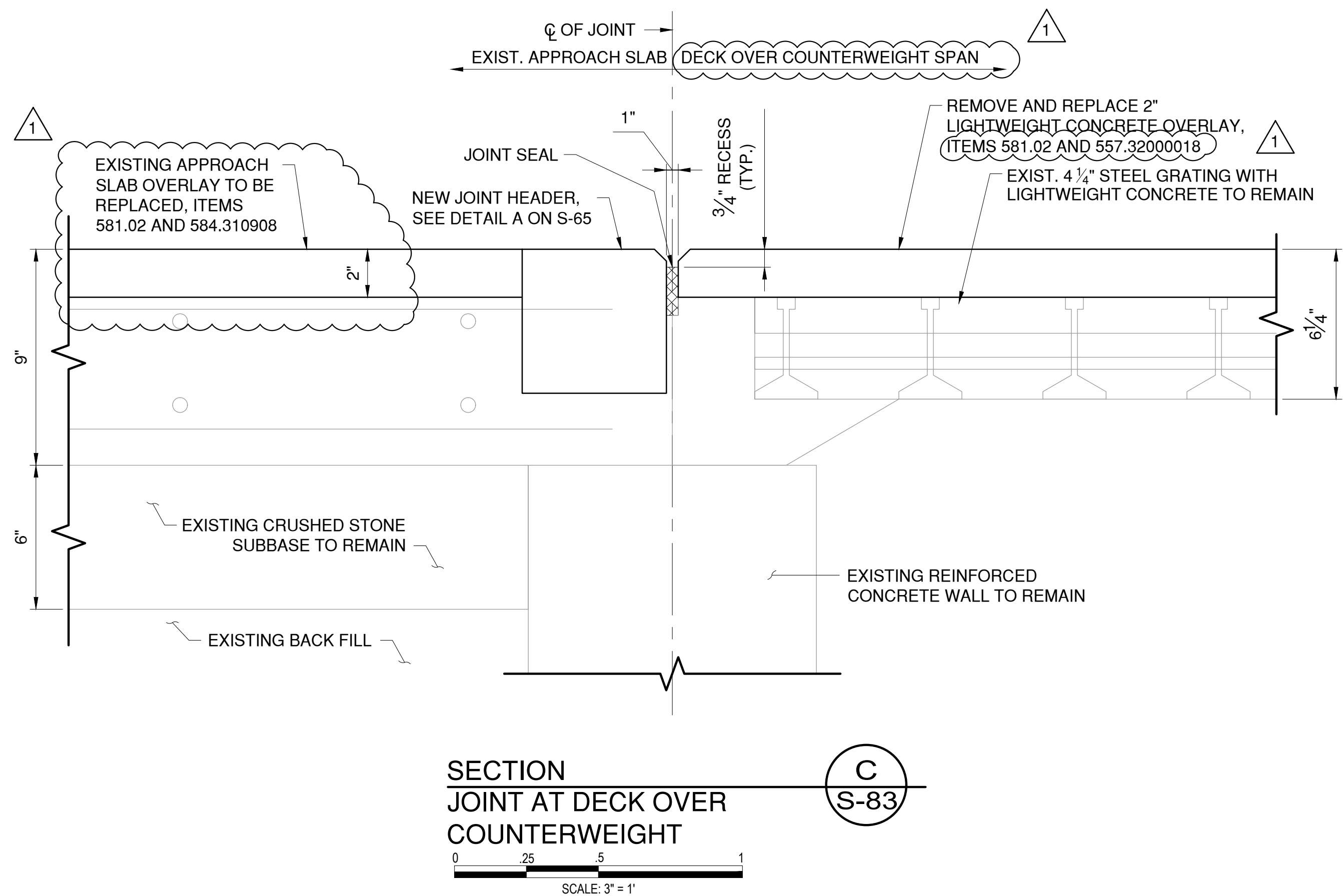












- NOTES:
- 1. SEE NOTES ON SHEET NO. S-65.
  - 2. CARE SHALL BE TAKEN NOT TO DAMAGE THE EXISTING APPROACH SLAB AND GRID DECK.

CONSULTANT SEAL

CONSULTANT INFORMATION

1501 BROADWAY, SUITE 601  
NEW YORK, NY 10036  
(212) 944-1150

WESTCHESTER COUNTY, NEW YORK DEPARTMENT OF PUBLIC WORKS AND TRANSPORTATION DIVISION OF ENGINEERING Rehabilitation of Glen Island Approach Bridge over New Rochelle Harbor, City of New Rochelle STRUCTURAL <b>DECK JOINT DETAILS - 4</b>	CONTRACT NUMBER 20-517	SHEET NUMBER S-68
	SHEET NO. 109 OF 212	
	SCALE: AS SHOWN DATE: 03/08/2024 DPW FILE NO.	
	5-04-S-544-0	

REV. NO. 1

IN CHARGE OF D. DELUCA, PE  
CHECKED BY F. SIEH, PE  
MADE BY N. HYSON, PE

1	4/24/24	NMH	DD	APPROACH SLAB WORK	RECORD DRAWING CERTIFICATION			
					<input type="checkbox"/> AS BUILT – CHANGES AS NOTED			
					<input type="checkbox"/> AS BUILT – NO CHANGES			
					CONTRACTOR		PROJECT COORDINATOR	
					NAME _____		NAME _____	
					SIGNATURE _____		SIGNATURE _____	
					TITLE _____ DATE _____		TITLE _____ DATE _____	
REVISION NUMBER	DATE	MADE BY	APP'D BY	REVISION				





DOOR SCHEDULE													
MARK	LOCATION	DOOR			FRAME					FIRE LABEL	HARDWARE SET	MATERIAL	REMARKS
		WIDTH	HEIGHT	THICKNESS	WIDTH	HEIGHT	HEAD	SILL	JAMB				
1	RESTROOM	3'-0"	7'-0"	1 ¾"	3'-4"	7'-2"	A	B	C	-	1	HOLLOW METAL	GRAY

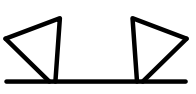
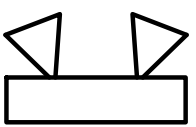

NOTE: SEE DETAILS ON THIS SHEET FOR FRAME DETAILS.

RESTROOM ACCESSORIES			
MARK	QUANTITY	DESCRIPTION	MOUNTING HEIGHT (FROM FINISH FLOOR)
1	1	TOILET	1'-4 ¾" TO TOP OF SEAT
2	1	LAVATORY	2'-10" TO TOP OF LAVATORY
3	1	WALL MOUNTED MIRROR	5'-10" TO TOP OF MIRROR
4	1	SOAP DISPENSER	4'-0" MAX TO C.L. OF SOAP DISPENSER
5	1	PAPER TOWEL DISPENSER	4'-5" TO TOP OF DISPENSER
6	1	TOILET TISSUE DISPENSER	2'-7" TO TOP OF DISPENSER
7	1	WASTE BASKET	FLOOR
8	1	HAND SANITIZER DISPENSER	4'-5" TO TOP OF DISPENSER
9	1	WASTE PUMP	FLOOR

ARCHITECTURAL FURNITURE, FIXTURE AND EQUIPMENT SCHEDULE		
MARK	DESCRIPTION	REMARKS
FFE-1	UNIT KITCHEN	DWYER

INTERIOR FINISH SCHEDULE			
LOCATION	WALL	BASE	FLOOR
RESTROOM	CERAMIC WALL TILE (BASE: DESERT GRAY, TOP:WHITE)	CERAMIC COVE BASE (DESERT GRAY)	CERAMIC FLOOR TILE (CHALKBOARD)
LOWER LEVEL PARTITION WALL	PAINTED GYPSUM BOARD (WHITE, SEMI-GLOSS)	VINYL WALL BASE	N/A

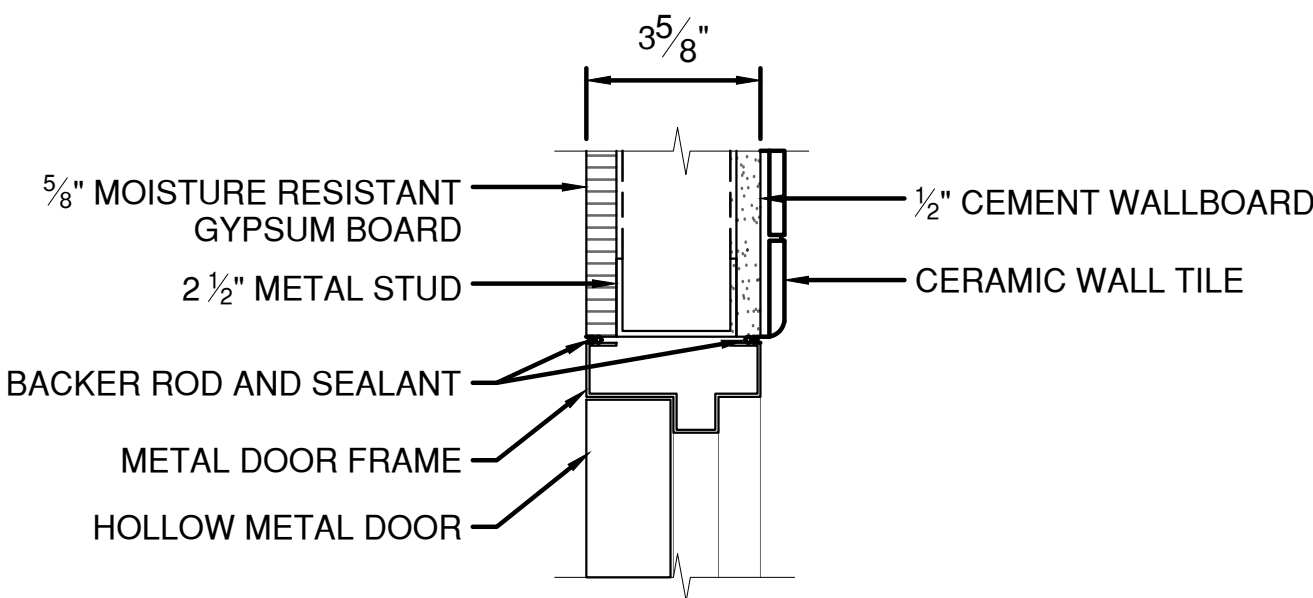
NOTE: SEE NOTE 1 AND 2.

LIFE SAFETY EQUIPMENT SCHEDULE					
SYMBOL	DESCRIPTION	QUANTITY	MANUFACTURERS/MODEL NUMBERS*	MOUNTING HEIGHT (FROM FINISH FLOOR)	REMARKS
	EMERGENCY LIGHTING	2	1. DUAL LITE - DYNAMO DYN NEMA 4X / C1D2 / C2D1 INDUSTRIAL LED EMERGENCY LIGHT 2. LITHONIA LIGHTING - EXTL INDUSTRIAL EMERGENCY LIGHT 3. WESTGATE - ELN4X EMERGENCY LIGHT	WALL MOUNTED, 7'-5" TO TOP OF EQUIPMENT	90 MINUTE BATTERY BACKUP
	EXIT SIGN WITH EMERGENCY LIGHTING	3	1. LITHONIA LIGHTING - LHQM LED QUANTUM EXIT/UNIT COMBO 2. LITHONIA LIGHTING - WLTC EMERGENCY LIGHT COMBO 2. NICOR - ECL5 LED EXIT SIGN COMBO	WALL MOUNTED, 7'-0" TO BOTTOM OF EQUIPMENT, OR CEILING MOUNTED	90 MINUTE BATTERY BACKUP LETTER COLOR: GREEN
	HARDWIRED INTERCONNECTED COMBINATION SMOKE AND CARBON MONOXIDE DETECTOR	4	1. KIDDE - i12010SCO WORRY-FREE AC WIRE-IN COMBINATION SMOKE AND CO ALARM SEALED LITHIUM BATTERY BACKUP 2. BRK - 120V HARDWIRED SMOKE AND CARBON MONOXIDE ALARM SC9120B	CEILING MOUNTED	SEALED BATTERY SEE SCHEDULE NOTE 1

\*OR APPROVED EQUAL

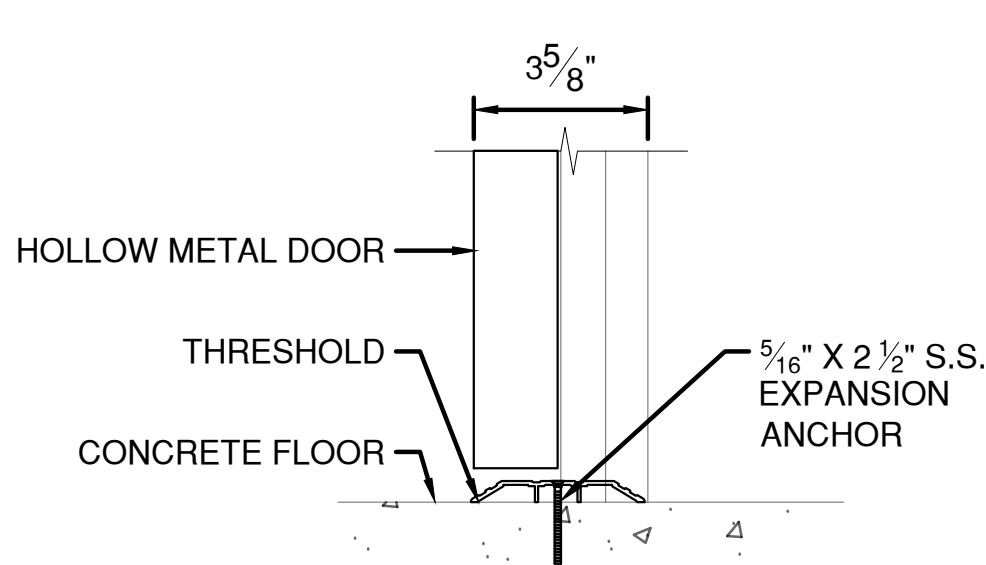
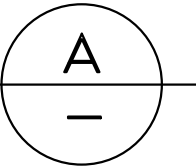
SCHEDULE NOTES:

1. FIRE ALARM SYSTEM CONSISTS OF 4 STANDALONE (NOT CENTRALLY MONITORED OR CONTROLLED BY A FIRE ALARM CONTROL PANEL (FACP)) HARDWIRED AND INTERCONNECTED COMBINATION CARBON MONOXIDE/SMOKE DETECTORS. THE INTENT OF THE FIRE ALARM SYSTEM IS TO NOTIFY THE OCCUPANTS OF THE CONTROL HOUSE THAT A SMOKE OR CARBON MONOXIDE EVENT HAS BEEN TRIGGERED. THE OCCUPANTS OF THE CONTROL HOUSE WILL THEN CALL SUPERVISORS AND/OR FIRST RESPONDERS AS REQUIRED.



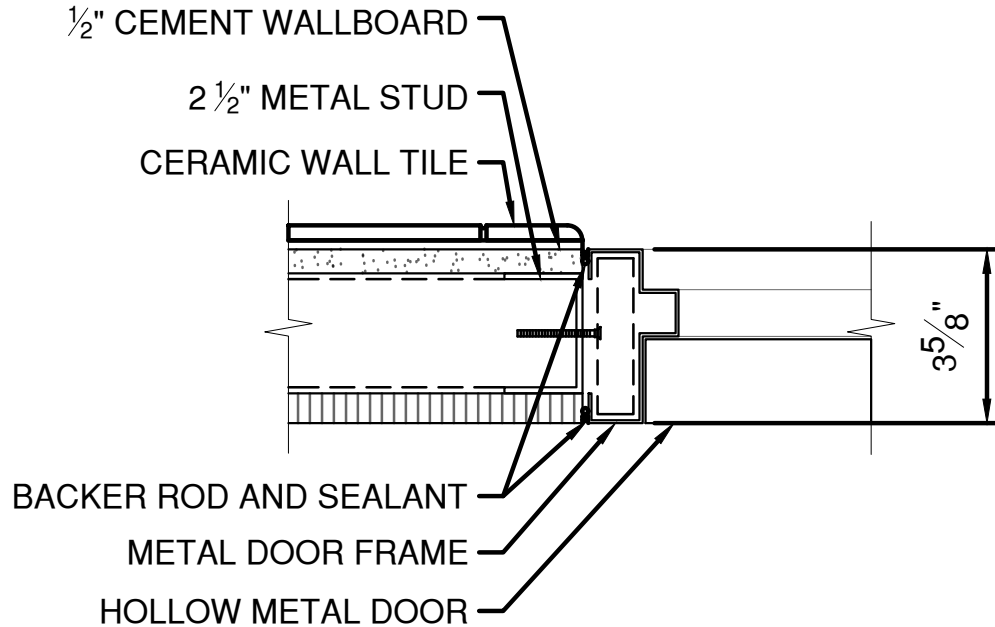
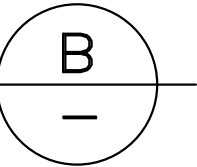
DOOR HEADER

SCALE: 3" = 1'-0"



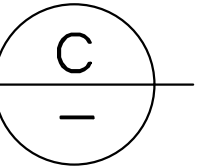
DOOR SILL

SCALE: 3" = 1'-0"



DOOR JAMB

SCALE: 3" = 1'-0"



NOTES:

1. SEE ITEM NO. 599.061001WE FOR ALL BUILDING RENOVATION SPECIFICATION SECTIONS.
2. PARENTHESIS WITHIN INTERIOR FINISH SCHEDULE DENOTE COLOR OF FINISH.

IN CHARGE OF D. DELUCA, PE  
CHECKED BY D. TARANTINO, RA  
MADE BY E. BREDAHL

1	4/24/24	EB	DT	SCHEDULE NOTE ADDED
REVISION NUMBER	DATE	MADE BY	APP'D BY	REVISION

RECORD DRAWING CERTIFICATION

- ☐ AS BUILT – CHANGES AS NOTED  
☐ AS BUILT – NO CHANGES

CONTRACTOR

NAME \_\_\_\_\_  
SIGNATURE \_\_\_\_\_  
TITLE \_\_\_\_\_ DATE \_\_\_\_\_

PROJECT COORDINATOR

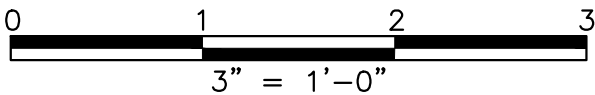
NAME \_\_\_\_\_  
SIGNATURE \_\_\_\_\_  
TITLE \_\_\_\_\_ DATE \_\_\_\_\_



CONSULTANT INFORMATION



1501 BROADWAY, SUITE 601  
NEW YORK, NY 10036  
(212) 944-1150



WESTCHESTER COUNTY, NEW YORK  
DEPARTMENT OF PUBLIC WORKS AND TRANSPORTATION

DIVISION OF ENGINEERING

Rehabilitation of Glen Island Approach Bridge  
over New Rochelle Harbor, City of New Rochelle

ARCHITECTURAL

CONTROL HOUSE SCHEDULES

CONTRACT NUMBER  
20-517

SHEET NUMBER  
A-10

SHEET NO. 142 OF 212

SCALE: AS SHOWN  
DATE: 03/08/2024

DPW FILE NO.  
5-04-A-577-0

REV. NO.  
1

**SPECIAL NOTICE**

County of Westchester  
New York

**The following Insurance Requirements supersede the Insurance Requirements set forth in the Special Notices and Information For Bidders.**

**Any reference in the Bid Documents to certificates of insurance shall mean and require the evidence of insurance as required in this Addendum.**

**INSURANCE REQUIREMENTS**

1. The Contractor, upon award of the contract and throughout the term of the contract, shall furnish, deliver and maintain at its own cost and expense the required insurance as delineated below from insurance companies licensed in the State of New York, carrying a Best's financial rating of A or better. The Contractor shall provide evidence of such insurance to the County by providing a copy of the policies, endorsements, and/or certificates as may be required and approved by the Director of Risk Management of the County ("Director"). The policies, endorsements, or certificates thereof shall provide that ten (10) days prior to cancellation or material change in the policy, notices of same shall be given to the Board of Acquisition and Contract of the County of Westchester by registered mail, return receipt requested, for all of the following stated insurance policies, with a copy also sent to the Director. All notices shall name the Contractor and identify the contract number.

If at any time any of the policies required herein shall be or become unsatisfactory to the Director, as to form or substance, or if a company issuing any such policy shall be or become unsatisfactory to the Director, the Contractor shall upon notice to that effect from the County, promptly obtain a new policy, and submit the policy, endorsement, or the certificate as requested by the Director for approval by the Director. Upon failure of the Contractor to furnish, deliver and maintain such insurance, the contract, at the election of the County, may be declared suspended, discontinued or terminated.

Failure of the Contractor to take out, maintain, or the taking out or maintenance of any required insurance, shall not relieve the Contractor from any liability under the contract, nor shall the insurance requirements be construed to conflict with or otherwise limit the contractual obligations of the Contractor concerning indemnification.

All property losses shall be made payable to the "County of Westchester" and adjusted with the appropriate County personnel.

In the event that claims, for which the County may be liable, in excess of the insured amounts provided herein are filed by reason of Contractor's negligent acts or omissions under the contract or by virtue of the provisions of the labor law or other statute or any other reason, the amount of excess of such claims or any portion thereof, may be withheld from payment due or to become due the Contractor until such time as the Contractor shall furnish such additional security covering such claims in form satisfactory to the Director.

In the event of any loss, if the Contractor maintains broader coverage and/or higher limits than the minimums identified herein, the County shall be entitled to the broader coverage and/or higher limits maintained by the Contractor. Any available insurance proceeds in excess of the specified minimum limits of insurance and coverage shall be available to the County.



**SPECIAL NOTICE**

County of Westchester  
New York

2. The Contractor shall provide evidence of the insurance for each coverage checked off below:

☒ Workers' Compensation and Employer's Liability: Certificate form C-105.2 or State Fund Insurance Company form U-26.3 is required for proof of compliance with the New York State Workers' Compensation Law. State Workers' Compensation Board form DB-120.1 is required for proof of compliance with the New York State Disability Benefits Law. Location of operation shall be "All locations in Westchester County, New York."

Where an applicant claims to not be required to carry either a Workers' Compensation Policy or Disability Benefits Policy, or both, the employer must complete NYS form CE-200, available to download at: <http://www.wcb.ny.gov>.

If the employer is self-insured for Workers' Compensation, he/she should present a certificate from the New York State Worker's Compensation Board evidencing that fact (Either SI-12, Certificate of Workers' Compensation Self-Insurance, or GSI-105.2, Certificate of Participation in Workers' Compensation Group Self-Insurance).

If working on navigable water for commercial purposes or if a barge will be used, then Federal Longshore and Harbors Workers' Compensation insurance will be required.

☒ Commercial General Liability Insurance with a combined single limit of \$10,000,000 (c.s.l.) per occurrence when combined with the Commercial Umbrella/ Excess Insurance, naming the "County of Westchester" as an additional insured on a primary and non-contributory basis. This insurance shall be endorsed to include Faulty Workmanship and Defects. This insurance shall include the following coverages:

- i. Premises - Operations.
- ii. Broad Form Contractual.
- iii. Independent Contractor and Sub-Contractor.
- iv. Products and Completed Operations.

NOTES: (a) Additional insured status shall be provided by standard or other endorsement that extends coverage to the County of Westchester for both on-going and completed operations.

(b) All Contracts involving the use of explosives, demolition and/or underground work shall provide proof that XCU is covered.

The Contractor shall provide the original and duplicate copy of the full policy, as well as any and all endorsements, to the County.

☒ Commercial Umbrella/Excess Insurance: \$10,000,000 per occurrence when combined with the Commercial General Liability Insurance, naming the "County of Westchester" as an additional insured, written on a "follow the form" basis. This insurance shall include Products and Completed Operations and be endorsed to include coverage for Faulty Workmanship and Defects.

NOTES: Notes (a) through (b) above under the Commercial General Liability Insurance shall also apply to Commercial Umbrella/Excess Insurance.

The Contractor shall provide the original and duplicate copy of the full policy, as well as any and all endorsements, to the County.

**SPECIAL NOTICE**

County of Westchester  
New York

☒ Automobile Liability Insurance with a minimum limit of liability per occurrence of \$1,000,000 for bodily injury and a minimum limit of \$100,000 per occurrence for property damage or a combined single limit of \$1,000,000 unless otherwise indicated in the contract specifications. This insurance shall include for bodily injury and property damage the following coverages and name the "County of Westchester" as an additional insured:

- (i) Owned automobiles.
- (ii) Hired automobiles.
- (iii) Non-owned automobiles.

☐ Construction Insurance: For the construction, renovation or repair of bridges, viaducts or similar structures, the Contractor at its own cost and expense shall furnish, deliver and maintain a "Bridge Builder's Risk Form, All Risk Insurance Contract," with flat premium endorsement, until the construction contract is accepted by the Board of Acquisition and Contract of the County of Westchester. The insurance shall include coverage for project delays, extra expense for rental equipment and increased material costs, environmental legal liability insurance, design and construction defects, liquidated damages (if any) and provide liability coverage on an on-going construction and completed operations basis. The coverage shall also include business interruption and contingent interruption and extra expense coverage. The coverage shall be written for 100% completed value basis for the full insurable portion of the Work for the benefit of the "County of Westchester", the Contractor and all Subcontractors. The Contractor shall provide the original and duplicate copy of the policy, as well as any and all endorsements, to the County.

☐ Construction Insurance: For the construction of (a) new buildings and (b) for additions or repairs of existing buildings or structures, the Contractor at its own cost and expense shall furnish, deliver and maintain a "Builder's Risk Form, All Risk Insurance Contract," with flat premium endorsement, until the construction contract is accepted by the Board of Acquisition and Contract of the County of Westchester. The coverage shall include business interruption and contingent business interruption and extra expense coverage. The coverage shall be written for 100% of the completed value, covering and naming the Contractor and "County of Westchester" as the insureds. The Contractor shall provide the original and duplicate copy of the policy, as well as any and all endorsements, to the County.

☒ Owners Protective Liability Policy covering and naming the "County of Westchester" as insured, with a minimum limit of liability per occurrence of \$3,000,000. The Contractor shall provide the the original and duplicate copy of the full policy to the County.

☒ Crane, Rigging, & Crane Operator (Rigger Liability) Insurance with a minimum limit of liability per occurrence of \$5,000,000 for bodily injury and a minimum limit of \$500,000 per occurrence for property damage or a combined single limit of \$5,000,000. This insurance shall include coverage for bodily injury and property damage. This insurance shall name the "County of Westchester" as an additional insured.

The Contractor shall provide the original and duplicate copy of the full policy, as well as any and all endorsements, to the County.



**SPECIAL NOTICE**

County of Westchester  
New York

In addition, any cranes or equipment used to lift material shall be approved with the County minimum 72 hr. prior to use. Contractor is required to obtain all permits for such cranes or equipment as required by the local municipality. If required, Contractor to provide NYS PE stamped shop drawings for all such equipment, cost of which shall be included in the Contractors bid. Contractor shall also obtain any required permits from the municipality for any road closures or use of adjacent parking lots needed to complete their work.

☒ Construction Contractor's Pollution Liability Insurance, either by separate policy of insurance or through endorsement to the General Liability Policy. Minimum Limit: \$1,000,000.00. A minimum limit of \$5,000,000 will be required if scope of work presents pollution liability in excess of \$1,000,000. This insurance shall name the "County of Westchester" as an additional insured and indicate the following coverages:

- (i) Transit
- (ii) Sudden and Accidental
- (iii) Clean-up

The Contractor shall provide the original and duplicate copy of the full policy, as well as any and all endorsements, to the County.

☐ Asbestos and Lead Abatement General Liability Occurrence Policy in amounts not less than \$1,000,000 and naming the "County of Westchester" as an additional insured.

☐ Cyber Liability insurance with a combined single limit of \$1,000,000 (c.s.1) per occurrence and either no aggregate limit, or, if there is an aggregate limit, a minimum \$2,000,000 aggregate limit, naming the "County of Westchester" as an additional insured on a primary and non-contributory basis.

The Contractor shall provide the original and duplicate copy of the full policy, as well as any and all endorsements, to the County.

☒ Construction professional liability insurance. The Contractor shall provide proof of such insurance. (Minimum limit of \$10,000,000 per occurrence).

The Contractor shall provide the original and duplicate copy of the full policy, as well as any and all endorsements, to the County.

☒ The Contractor shall provide additional insurance in the amounts and on the same terms and conditions as provided for the benefit of the County of Westchester in this Addendum for the following municipality:

City of New Rochelle  
City Hall  
515 North Avenue  
New Rochelle, NY 10801

☒ Other: Hull Protection and Indemnity Policy if a barge will be used: \$1,000,000 per occurrence and a minimum \$2,000,000 in the aggregate limit. The Contractor shall provide the original and duplicate copy of the full policy, as well as any and all endorsements, to the County.

**SPECIAL NOTICE**

County of Westchester  
New York

3. All policies of the Contractor shall be endorsed to contain the following clauses:
  - (a) Insurers shall have no right to recovery or subrogation against the County (including its employees and other agents and agencies), it being the intention of the parties that the insurance policies so effected shall protect both parties and be primary coverage for any and all losses covered by the above-described insurance.
  - (b) The clause "other insurance provisions" in a policy in which the County is named as an insured, shall not apply to the County.
  - (c) The insurance companies issuing the policy or policies shall have no recourse against the County (including its agents and agencies as aforesaid) for payment of any premiums or for assessments under any form of policy.
  - (d) Any and all deductibles in the above described insurance policies shall be assumed by and be for the account of, and at the sole risk of, the Contractor.
4. The above policies for the Contractor and/or any of its subcontractors shall not contain any endorsements, terms, conditions or definitions that result in any labor law or action over exclusions.
5. The Director reserves the right to require any of the above insurance coverage and/or policies during the progress of work on the contract even if such coverage and/or policy is not checked off at the time of the bidding.

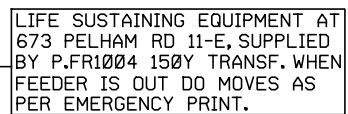
**Certificate Holder on all certificates of insurance shall** read: The County of Westchester, 148 Martine Avenue, White Plains, New York 10601.

**PLEASE NOTE: Printed copies of all of your full insurance policies, and any and all endorsements, are required.**



71U1

F	9337	1000 AVENUE SDWK. CRTG.	48M	NO. DISC EQUIP
	W			
G	13686	GLEN ISLAND-WESTCHESTER COUNTY PARK COMMISSION CONTROL BOTH ON BRIDGE APPROACH TO GLEN ISLAND PARK ALL STRUCTURES & EQUIPMENT-CUST OWNED - ACCESS ANYTIME ANY INTERRUPTION TO HTV-13686 CALL U.S. COAST GUARD C. W. O. WILLIAM HEMING 212-668-7936-NIGHT 212-668-7967-DAY SEE OPERATING SPEC. WRE-6026	48N	H. T.
	W		3	



A $\phi$  - 37.5 KVA  
B $\phi$  - 200.0 KVA  
C $\phi$  - 275.0 KVA  
ABC $\phi$  - 2895.0 KVA

SCALE 1" = 300'

FEEDER	71U1
4,000 VOLTS	
CITY OF NEW ROCHELLE	

M & R BUREAU	CORRECTED TO: 3/04/2024
--------------	-------------------------

	V OR TM NO	LOCATION	NOTE	AREA	EQUIP
A		DRAKE 71 SUBSTATION		5BN	
B	TM 4302 W	ROCHELLE ACRES PELHAM RD. N. S. W/O DRAKE AVE. TM ON SIDEWALK		5BN	500 Y NO. DISC EQUIP

WEST DIV.  
SYS. OPER.

DRAKE-71  
SUBSTATION

CABLE REPLACEMENT

REPLACE ALL CABLE IN ACCORDANCE WITH SPEC. EO. 2038

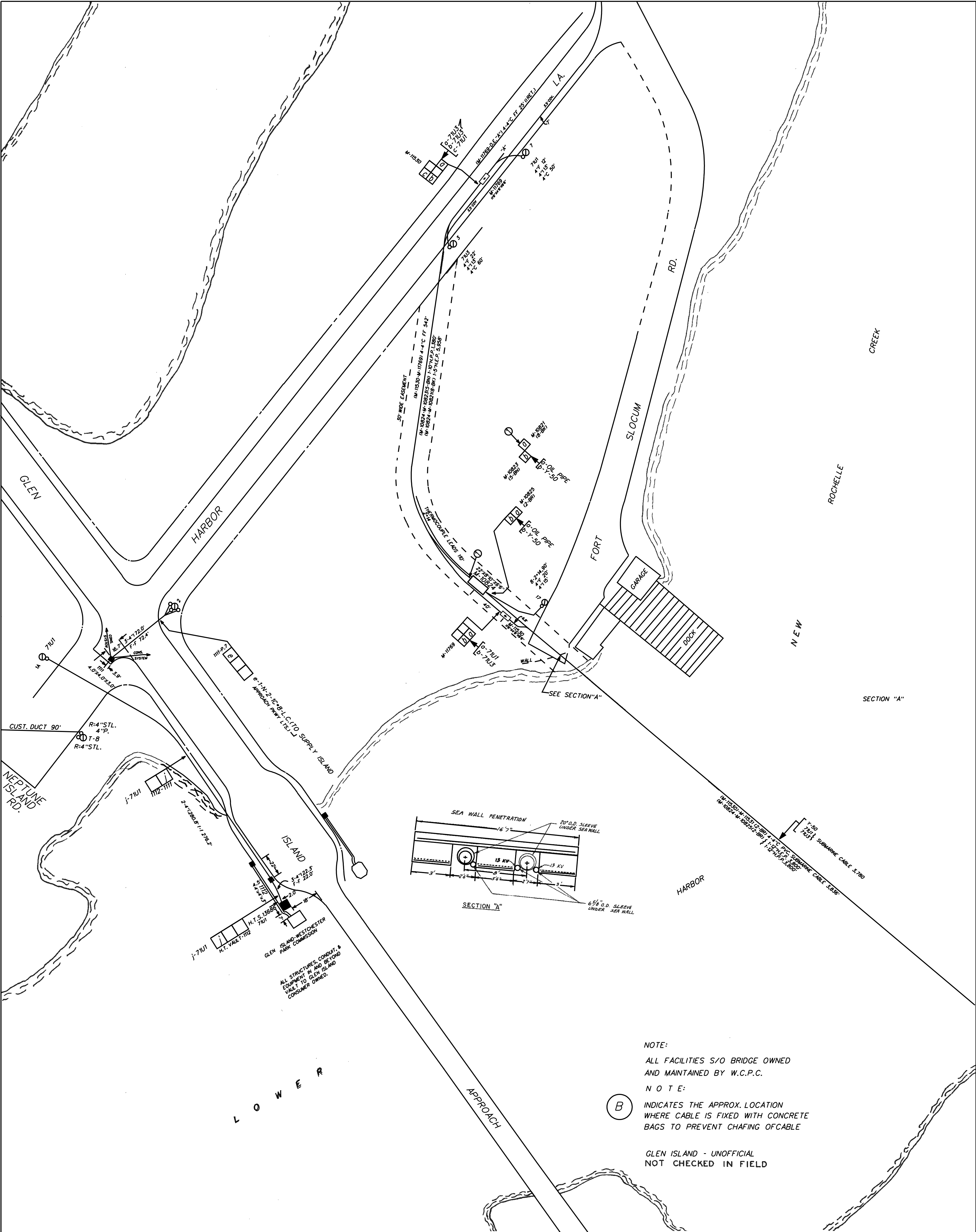
3.3 WITH THE EXCEPTION OF TRANSFORMERS TAPS AND  
SHORT SPURS, CABLES USED FOR REPLACEMENT OR  
REINFORCEMENT SHALL BE THE LARGEST CONDUCTOR  
SIZE FOR THE EXISTING DUCT.

TOTAL CONNECTED K.V.A. CAPACITY 970.0  
(DOES NOT INCLUDE H T CUSTOMERS, SHUNT REACTORS)

- AØ - 50.0 KVA
- BØ - 0.0 KVA
- CØ - 150.0 KVA
- ABCØ - 770.0 KVA

(NORMALLY TIED TO 91U3)

NOTES: 3. INCLUDE AS ONE IN RADIAL CUSTOMER COUNT. 9. AIR TYPE SWITCHES LOAD BREAK TOOL REQUIRED.	REVISION:  RENAME SCADA SWITCHES AT VARIOUS LOCATIONS AS PER BULLETIN B321	FEEDER 4,000 VOLTS CITY OF NEW ROCHELLE SCALE 1"= 300'	71U3
CONSOLIDATED EDISON CO. OF N.Y. INC. WESTCHESTER CUSTOMER SERVICES	M & R BUREAU	CORRECTED TO:	12/10/2018





## SUMMARY OF QUESTIONS

Question #	RFI #	Contractor	Question	Response
072	009	Kiewit	Detail A on Dwg S-65 depicts a joint header as part of the joint system for the bridge deck. There is no pay item under 567.62 for the joint header, and no materials specified for this bridge joint. Please advise.	See response to Question 066 in Addendum No. 4
073	009	Kiewit	Pay item 586.05 REMOVAL OF RIVETS - REPLACEMENT WITH HIGH STRENGTH BOLTS depicts a quantity of 4400ea. Please clarify if this quantity is to pay for all rivet removal shown on the drawings, or if this item a contingency for rivets with potential head loss. For Instance, Steel Repairs dwg S-35, would this pay item cover all work associated with the "New Bolt In Existing Rivet Hole" symbol as denoted in the legend? For demolition, does the rivet removal item pay for the initial rivet removals required for the removal of the existing floor beams, or do those rivet removal activities get paid under the associated Demolition items?	Item 586.05 covers floorbeam connections to the main arch girders as well as at locations of the arch girder strengthening where rivets are being removed and replaced with HS bolts. There is a ~5% of unassigned value for contingency rivets with head loss throughout the project. As noted in the NYSDOT Standard Specifications, Item 586.05 includes rivet removal as part of demolition and the installation of the replacement HS bolt.
074	009	Kiewit	There are multiple notes in the drawings stating "EXISTING RIVET HOLES TO BE SUBDRILLED AND REAMED AS NECESSARY." Please clarify what pay item this activity will be paid under.	Per NYSDOT Standard Specifications, reaming is included in Item 586.05 if the bolt does not fit the existing rivet hole.
075	009	Kiewit	Pay item 586.10 FIELD DRILL HOLES IN EXISTING STRUCTURAL STEEL have a pay qty of 600ea. Please confirm this quantity is to pay for all the field drilled holes into existing steel depicted on the drawings and not a contingency quantity for any unforeseen or incidental holes in new steel.	Confirmed, Item 586.10 is for new holes in existing steel. A contingency is included in the 600ea quantity to account for unforeseen or incidental holes in existing steel.
076	009	Kiewit	On page 184(pdf) in volume 2 as-built drawing shows pile towers for jacking used in previous contract. Please confirm H Piles previosly installed were removed entirely, so contractor will not interfere with previous pile.	See response to Question 057 in Addendum No. 4
077	009	Kiewit	When preparing the General Contractor's Qualification Statement Form as the General Contractor on the project, please confirm that the "Contractor's Construction Manager with Contract Information" and "Project Superintendent with Contact Information" fields are intended to represent an employee of the General Contractor and not that of an Owner's Representative.	Confirmed.
078	009	Kiewit	Drawings S-88 and S-89 (Sheets 129-130 of 212) show the limits of the Temp Bridge Structure Lump Sum Pay Item 619.0501 extending all the way to the existing roadway grade tie in. Drawings WZTC-03 and WZTC-04 (Sheets 20-21 of 212) provide a series of unit price pay items for the ramp work. Please confirm the structural abutments (wing wall/micorpiles & structural steel) required for the temporary bridge are to be included in the lump sum pay item 619.0501. All other temporary bridge ramp work (both installation and demolition) to be designed by the contractor will be included in the provided unit price items.	Confirmed. See response to Question 059 in Addendum No. 4
079	009	Kiewit	Drawing WZTC-03 (Sheet 20 of 212) shows existing trees inside the footprint of the temporary bridge ramp to be constructed. Please confirm what item tree removal will be paid under or provide a separate unit price Pay item 201 Clearing and Grubbing to be used for this scope of work.	See response to Question 044 in Addendum No. 4
080	009	Kiewit	Drawing S-87 (Sheet 128 of 212) Temporary Structure Note #13 indicates a Wire Mesh MSE Wall is recommended. Please confirm the requirement that the MSE wall is to extend continuously from the on grade roadway tie-in to behind the wingwall and the abutment wall, and that the embankment will not be directly against the wingwall as depicted in Section C on Sheet 132. And if required, confirm a separate unit price Pay item 554 Fill Type Retaining Walls is to be provided for this scope of work.	Contractor is responsible for design of the approaches to the temporary bridge. The details shown on S-87 to S-91 are conceptual and only intended to serve as a possible altenative. See response to Question 059 in Addendum No. 4

## SUMMARY OF QUESTIONS

Question #	RFI #	Contractor	Question	Response
081	009	Kiewit	<p>Drawing S-87 (Sheet 128 of 212) Temporary Structure Note #4 states that the Temporary Bridge shall be designed with either</p> <p>1) The Standard Specifications for Highway Bridges (17th Edition) for a Design Load of HS-20 in combination with AASHTO Standard Specifications for Moveable Highway Bridges (1988).</p> <p>2) NYSDOT LRFD Bridge Design Specifications for a Design Live Load of HL-93</p> <p>In addition to the Contractor's anticipated Construction loads and wind loading, is there a requirement to include vessel impact, scour, ice, streamflow loads for the Temporary Bridge? If so please provide the required loads to be applied or specific design criteria that will be required.</p>	<p>Temporary bridge shall be designed for all loads required by the specifications noted in Note #4. Vessel impact load need only be applied to the temporary fenders protecting piers adjacent to the navigable channel.</p>
082	009	Kiewit	<p>Addendum No. 1 C-1 Project Labor Agreement Article 19 outlines the Workers' Compensation ADR. Please confirm that participation in the Workers' Compensation ADR Agreement is not mandatory and that traditional Workers' Compensation insurance coverage will be acceptable.</p>	<p>This request for information has been deferred to Addendum No. 6.</p>
083	009	Kiewit	<p>Information for Bidders Section 7. requires all property losses be made payable to the "County of Westchester" and adjusted with the appropriate County personnel. The power to adjust and settle claims should be maintained by the first named insured and the party procuring the Builders' Risk insurance. Since the Contractor will be required to carry the insurance and as the Contractor will have the risk of loss, the responsibility to settle claims should be given to the Contractor. Where appropriate, the County of Westchester" will be loss payee on the builders' risk policy and losses will be made payable to the County. Please strike:</p> <p><del>"All property losses shall be made payable to the "County of Westchester" and adjusted with the appropriate County personnel."</del></p>	<p>See the Special Notice - Insurance Requirements included with this addendum.</p>
084	009	Kiewit	<p>Information for Bidders Section 7. requires if the Contractor maintains higher limits than the minimums that the County shall be entitled to the higher limits. The Contractor should not be penalized on losses that exceed the required insurance types or amounts. Further, please consider that Contractor's corporate program was not designed to accept unlimited risk from a single project, as such the following should be removed:</p> <p><del>"In the event of any loss, if the Contractor maintains broader coverage and/or higher limits than the minimums identified herein, the County shall be entitled to the broader coverage and/or higher limits maintained by the Contractor. Any available insurance proceeds in excess of the specified minimum limits of insurance and coverage shall be available to the County."</del></p>	<p>See the Special Notice - Insurance Requirements included with this addendum.</p>
085	009	Kiewit	<p>Information for Bidders Section 7. f) requires "Bridge Builder's Risk Form, All Risk Insurance Contract". Proponent and Proponent's insurance broker is unfamiliar with Bridge Builder's Risk Form. Please provide this form or confirm that traditional All Risk Builders' Risk coverage will suffice.</p>	<p>See the Special Notice - Insurance Requirements included with this addendum.</p>
086	009	Kiewit	<p>Information for Bidders Section 7. f) requires a flat premium endorsement. Proponent and Proponent's insurance broker is unfamiliar with the flat premium endorsement. Please provide this endorsement for review.</p>	<p>See the Special Notice - Insurance Requirements included with this addendum.</p>
087	009	Kiewit	<p>Information for Bidders Section 7. f) the Builders' Risk insurance be maintained until the construction contract is accepted by the Board of Acquisition and Contract of the County of Westchester. Builders' risk insurance ends upon Substantial Completion or at the point the Work is put to its intended use by the Owner, whichever is earlier. Please amend to recognize insurance industry practices.</p> <p>Construction Insurance: For the construction, renovation or repair of bridges, viaducts or similar structures, the Contractor at its own cost and expense shall provide and maintain a "Bridge Builder's Risk Form, All Risk Insurance Contract," with flat premium endorsement, until the construction contract is accepted by the Board of Acquisition and Contract of the County of Westchester.</p> <p><b><u>Substantial Completion or at the point the Work is put to its intended use by the County, whichever is earlier.</u></b></p>	<p>See the Special Notice - Insurance Requirements included with this addendum.</p>

## SUMMARY OF QUESTIONS

Question #	RFI #	Contractor	Question	Response
088	009	Kiewit	General Clauses Section 20 gives the risk of loss for the work until the work has been accepted by the Owner. Builders' Risk coverage ends upon Substantial Completion or when the work is put to its intended use, whichever occurs earlier. It is not equitable to give the Contractor the risk for loss it cannot insure. Contractor's risk of loss should end upon Substantial Completion or at the point the work is put to its intended use by the Owner, whichever is earlier. Please amend to: The Contractor shall be responsible for the protection and maintenance of its work until <del>the same has been accepted by the Owner</del> <b>Substantial Completion or when the work is put to its intended use, whichever occurs earlier</b> , and shall make good any damage to the work caused by floods, storms, settlements, accidents, or acts of negligence by its employees or others so that the complete work when turned over to the Owner will be in first-class condition and in accordance with the plans and specifications.	General Clauses section 20 will not be amended.
089	009	Kiewit	Shear stud detail is shown on sheet #98. Which pay item and quantity will these shear stud be paid under? If shear stud is paid under 564.510001 structural steel, the weight of shear stud is included in the bid quantity?	Shear stud weight is included in the proposed structural steel weight, Item 564.510001.
090	009	Kiewit	Note 4 on drawing M-12 references guide post anchors and anchor plates to be paid in item 564.51001. Please verify that guide posts, receiver post, actuator post, face plate and HSS as shown in sections J and K on drawing M-13 are included in pay item 599.063000WE span lock machinery	This note 4 pertains to just the anchors an anchor plates embedded into concrete. Work shown on drawing M-13 is paid for under 599.061205WE.
091	009	Kiewit	Note 2.3 indicates a potential preload on trunnion collars and the need to provide horizontal jacking. Please provide the minimum anticipated jacking force required to overcome the preload	New collars are detailed for replacing the collar. If necessary, the existing collar can be removed by mechanical cutting methods. The jacking load is not anticipated to exceed 10 kips.
092	010	Mass Electric	Drawing E-03, Note 14 on the Temporary Bridge Operation states no Overhead or Submarine cables shall be utilized for Power or Controls. Note 15 states how to establish bridge controls but not power. Please describe available means of power that can be utilized on the far side for electrical equipment or consider removing note 14.	Note 14 states "... TEMPORARY SYSTEM SHOULD DETAIL TEMPORARY POWER ARRANGEMENT FROM THE EXISTING SWITCHGEAR HOUSE AND THE POWER HOUSE ACROSS THE CHANNEL." The power house across the channel is the anticipated location to arrange a temporary power scheme.
093	010	Mass Electric	On drawing E-17, Panel LP-2, panel schedule calls for circuit for new Heat Trace. Heat trace information could not be found on Plumbing or electrical drawings. Please provide details for the heat trace.	As shown on E-17 there is an existing Heat Trace feeder. The Heat Trace system is being maintained. Sheet P-02 shows the extent of heat trace system manipulation.
094	010	Mass Electric	On drawing E-03, Note 8.9 shows pay item 599.13990010 Remove Submarine Cable that is not shown in the itemized proposal listed in ITB-20-517-Volume-1. Please confirm which pay item the removal of the existing submarine cable will be paid under.	599.13990010 will be removed. Submarine cable removal work is paid for under 599.142600WE.
095	010	Mass Electric	Please confirm the existence of the 15kV submarine cable not shown in the drawings that crosses from the main land switchgear building to the island switchgear via the north side of the Glen Island Bridge.	ConEdison is currently performing a survey to confirm the location of the submarine cable. Results of the survey will be made available via Addendum when they become available.
096	010	Mass Electric	Please confirm it is the contractor's responsibility to protect the 15kV submarine cable during construction.	Any existing utilities that are found in use are required to be protected and maintained.
097	010	Mass Electric	Drawing E-48 shows a CCTV layout with connections to a "County Network Box", please provide a location for where this device is to be installed.	The existing location is in the black box immediately to the lower left when entering the control room. The proposed location will be either in the same location or on a rack within the CCTV enclosure. The Contractor is required to coordinate with the County on the final location.
098	010	Mass Electric	Please provide the NEMA rating and material type of the enclosure for the Drive A & B Cabinets shown on drawings E-43 & E-47.	All cabinets are NEMA 4X rated 316 SS.
099	010	Mass Electric	Please provide the size and rating of the LP2-Sub panel shown in drawings E-34, E-17 (circuit 25,27,29).	LP2 SUB is a NEMA 4X rated 100A min, 3PH 208/120V lighting panelboard.



## SUMMARY OF QUESTIONS

Question #	RFI #	Contractor	Question	Response
100	010	Mass Electric	Please provide the size and rating of the Roadway Lighting Panel shown in drawing E-34.	The roadway lighting panelboard is NEMA 4X, 60A min 3PH 208/120V.
101	010	Mass Electric	Please confirm the portable generator and wiring to tap box with integral MTS shown on drawings E-09, E-18, E-34 is not part of the contractors scope of work.	The tap box with integral MTS and the conduit/wiring from tap box to the existing power distribution system is within the Contractor's scope. Please refer to 683.090700WE for tap box requirements. The Contractor is also required to provide a length of cable of sufficient length of portable cable with the necessary end terminations to be able to connect to the portable generator as well as to the tap box. The length shall be as determined by the Contractor's final location of the tap box and approved by the Engineer. However, supplying portable generator is not in the scope of the Contractor.
102	010	Mass Electric	On drawing E-36 shows the proposed conduit and cable schedule. Conduit No. 4 states from portable generator hook up to the tapbox with integral manual transfer switch (MTS) being provided from the portable generator. Please confirm the wiring is not part of the contractors scope of work.	The Contractor is to supply the County with a connection cord so that all the County is required to acquire to power the bridge through the tap box is to bring a portable generator on site. This cable will be required for testing through the roll up generator connection in any event. See response to Question 101 above.
103	010	Mass Electric	On drawing E-36 shows the proposed conduit and cable schedule. Conduit No. 8 states from a manual transfer switch (MTS) to the motor control center (MCC). Please advise if there is an existing MTS in the switchgear house that feeds the MCC within the control house.	Please refer to E-06 for the existing power distribution. There is no existing MTS, however, there is an existing ATS and DP1. For Conduit 8, the intent is to reuse the existing conduit which will be intercepted and manipulated in the new tap box with integral MTS install. New conductors are to be furnished from the Switchgear building to the Control house.
104	010	Mass Electric	In reference to conduit no. 8 on drawing E-36. If there is not an existing manual transfer switch (MTS) in the switchgear house, please provide a detail showing where the existing conduit run ends in the existing switchgear house.	See sheet number E-06.
105	010	Mass Electric	In reference to conduit no. 8 on drawing E-36. Please confirm the existing conduit run goes to the distribution panel (DP-1). If so, please provide a detail showing how to intercept the existing conduit run and re-route to the new manual transfer switch.	See E-06 for existing distribution. Contractor will be responsible to locate the existing conduit, run a new conduit from DP-1, and install the new Tap box with integral MTS. The existing conduit is to be intercepted to the nearest coupling and new conduit installed up to the new Tap box.
106	010	Mass Electric	On drawing E-36 shows the proposed conduit and cable schedule. Conduit No. 26 states from existing mounted pullbox in electrical room to electrical room wireway in existing conduit. Please confirm if the existing wireway is to remain.	The existing wireway is not to remain. The wireway shown on E-34 is diagrammatic and not all conduits are intended to be shown. The Contractor is required to supply the necessary quantity of conduits required to meet the needs of their the Contractors submitted Shop drawings.
107	010	Mass Electric	On drawing E-36 shows the proposed conduit and cable schedule. Conduit No. 94 states from near submarine cable terminal cabinet to electrical room wireway with "4#12, 2 FIBER" please clarify the type of fiber to be installed for this run.	The "2 Fiber" is referring to the two types of fiber optic cable. One fiber cable is the multimode fiber which is used across the channel for the CCTV cameras. The other is the single mode fiber utilized by the County to connect to the Administration building. See 599.063000WE for more information.
108	010	Mass Electric	On drawing E-48 shows proposed CCTV layout. There is a call out for (42) fiber cable through submarine cable, on drawing E-44 the submarine cable detail calls for fiber optic cable, 12 strand single-mode, 12 strand multi-mode. Please confirm the fiber types within the submarine cable.	Submarine cable shall have 12 strand Multimode cable and 12 strand single mode cable.
109	010	Mass Electric	On drawing E-37 shows the proposed conduit and cable schedule. Conduit No. 151 states from far submarine cable terminal cabinet to span lock platform lights and receptacle. Please provide a plan view showing lights and receptacles on the span lock platform.	The intent is to connect to existing lighting and receptacles at the span lock platform. For bidding purposes, assume that there are 4 span lock platform service lights and 4 maintenance receptacles.
110	010	Mass Electric	On drawing E-37 shows the proposed conduit and cable schedule. Conduit No. 155 states far submarine cable terminal cabinet to admin building fiber junction box with 1 FIBER. Please clarify the type of fiber to be installed for this run.	The single mode fiber is for the Administration building connection. See 599.063000WE for more information.
111	010	Mass Electric	On drawing E-37 shows the proposed conduit and cable schedule. Conduit No. 155 states far submarine cable terminal cabinet to admin building fiber junction box in 3/4 in conduit. Please confirm the conduit size for the fiber cable is adequate.	For the single mode fiber cable used during design, the 3/4" conduit is sufficiently sized. If for the Contractor proposed Single mode fiber cable requires a larger conduit, the Contractor shall be required to procure a larger conduit to meet NEC requirements. Contractor should note that the route from the Far SCTC to the administration building will be a mix of PC-RGS and HDPE duct as required by the micro-trenching operation.

## SUMMARY OF QUESTIONS

Question #	RFI #	Contractor	Question	Response
112	010	Mass Electric	On drawing E-37 shows the proposed conduit and cable schedule. Conduit No. 155 states far submarine cable terminal cabinet to admin building fiber junction box. Please clarify where the admin building fiber junction box is to be installed.	The fiber junction box is to be installed in the front lawn of the administration building immediately adjacent to the roadway, approximately 20ft south of the crosswalk.
113	010	Mass Electric	On drawing E-50 shows proposed fiber optic cable route to the administration building. Please clarify if junction boxes along the approach are required.	Please refer to E-50 note 2. The contractor shall provide pull boxes as required to make the pull or as required for circuit class separation.
114	010	Mass Electric	On drawing E-17, Panel LP-2, panel schedule calls for circuit for dryer and refrigerator. Please advise if existing conduit and cable is to be used or contractor to install new cable and conduit.	Existing conduit/conductors are to remain and be utilized for these circuits. Contractor is required to modify circuits if necessary based on new layout.
115	010	Mass Electric	"On drawing E-49 shows the partial grounding riser. Please confirm the neutral lines shown between equipment are part of the conduit and cable schedules on drawings E-36 & E-37.  i.e. from CB Service to ATS, from 150kW standby generator to ATS, from ATS to DP-1, etc."	The intent is to have a neutral present at the MCC. Some existing wiring is being reused at the service location, a neutral must be continuous from the service to the MCC.
116	010	Mass Electric	On drawing E-49 shows the partial grounding riser. If the neutral and ground lines between equipment are part of the conduit and cable schedules please advise on wire sizes to follow as the diagrams on E-49 differ from what is shown in the schedules on E-36 & E-37.	The grounding riser diagram shows some Ground Electrode conductors (GEC), some equipment ground conductors (EGC), and some bonding jumpers. In general equipment grounding conductors are shown on the CC and ground electrode conductors and bonding jumpers are not. If there is a discrepancy between EGC sizes, the larger of the two would prevail. The sizes shall be compared and C&C schedule and/or grounding riser shall be updated.
117	010	Mass Electric	On drawing E-49 shows the partial grounding riser. Please confirm the new 150kW standby generator does not need any additional grounding to a ground electrode or ground bar.	The generator is non-separately derived system (SDS) and, therefore, does not require additional ground electrode bonding, however, bonding of the typically non current carrying metal frame of the generator which is likely to be energized is required to be bonded to an equipment grounding conductor both while on generator power and while under utility power.
118	010	Mass Electric	On drawing E-49 shows the partial grounding riser. There is a call out stating "Minimum of two ground electrodes placed diametrically opposite at the far rest pier area ..." Please advise if installing the ground electrodes on the far side pier 10 out of the water closest to the island is acceptable.	AASHTO requires the electrode connections be at the pier closest the channel.
119	010	Mass Electric	On drawing E-39 shows the proposed roadway conduit layout. Please clarify the light fixtures 8B, 9C, 10A, 11B, 12C, 13A on the far side are to be installed with new conduit and new flush mount junction boxes.	Roadway lights 8B, 9C, 10A, 11B, 12C, 13A will have the conduit within the stone wall be reused, however, the junction box leading up to the light as well as the light pole itself is new. All conductors are new.
120	010	Mass Electric	On drawing E-39 shows the proposed roadway conduit layout. Please clarify the light fixtures 8B, 9C, 10A, 11B, 12C, 13A on the far side can utilize the existing conduit and flush mount junction boxes.	Roadway lights 8B, 9C, 10A, 11B, 12C, 13A will have the conduit within the stone wall be reused, however, the junction box leading up to the light as well as the light pole itself is new. All conductors are new.
121	010	Mass Electric	Please confirm there is adequate power for the far side temporary bridge structure power needs from the existing island switchgear.	Contractor is required to field verify and submit for review and approval the power distribution scheme for the far side of the bridge based on the Contractors temporary bridge far side power requirements.
122	010	Mass Electric	Please confirm roadway lighting on the temporary bridge is required.	Temporary bridge roadway lighting is required. Please refer to E-03 Temporary bridge note 19.
123	010	Mass Electric	Temporary bridge operation is not clarified or detailed in the PLA provided. Please clarify who is responsible in the PLA for the operation of the existing bridge.	Please refer to E-02 Temporary bridge notes note 2. The Contractor is required to operate the temporary bridge. For permanent bridge operation, see response to Question 004 in Addendum No. 3
124	011	RCC	Sheet # 43 reads that the removal of the existing fender system should be paid for under item 202.19, however, the pay item has a unit of CY, please advise on how the contractor should bill or quantify CY with a fender system removal while the existing material consists of just lumber & bolts/anchors.	Adjust unit bid price for 202.19 to account for the work associated with demolishing and disposing of the existing fender system.

## SUMMARY OF QUESTIONS

Question #	RFI #	Contractor	Question	Response
125	011	RCC	Sheet # 43 shows "Existing Concrete Approach Overlay to be removed and paid under item 581.01". However, the approach slab appears to be a concrete surface (Not asphalt) and we need clarification as to the required scope in this area. Please advise.	Removal of the asphalt overlay on the plaza (south approach) and north approach is to be paid for under 581.01. Removal of the concrete overlay on the deck-over-counterweight is to paid for under item 581.02. Please note the deck-over-counterweight is not a traditional approach slab; it is a single span composed of stringers and a filled grid deck. See sheet number S-83 for limits of removal on deck-over-counterweight.
126	011	RCC	Please identify or provide clarification on the contract drawings of the limits of item 202.2202 vs 202.2302 (composite vs Non-composite slab sections). Otherwise, would you consider converting these two bid items into one lump sum biditems for the same scope?	The available as-builts do not indicate that shear connectors are present. In the event that shear connectors are encountered during demolition and for the purpose of quantity calculations, 10% of the existing superstructure slab was assumed to be composite and the remaining 90% non-composite. No changes to the bid items will be made.
127	011	RCC	Note 14 on sheet 165 reads " the use of temporary submarine cable or aerial cable is prohibited" & the plans indicate how the contractor can get power on the Northwest side of the bascule span but do not indicate where we can tie into on the Southeast side. Please advise where temporary power can be acquired on the Southeast side of the bridge.  Please, also confirm if the contractor can tie into the service at the administration building.	See response to Question 092.
128	011	RCC	Can the contractor gain access to the Control House / Machinery room again before the bid by contacting the bridge operator / Park Department or will the owner need to schedule another optional site visit?	The contractor may contact Esther Rivas at egr3@westchestergov.com to try and arrange another site visit., but no guarantees can be given that the site visit will occur.
129	011	RCC	Please provide all specs and drawing requirements for the temporary control house for the temporary bridge.	The temporary control house must enable the temporary bridge to meet the performance specifications found in the Contract Documents. Temporary control house exact location, configuration, access, structural design and occupancy are not prescriptive.
130	011	RCC	Please advise on what pay items will the temp embankment removal be paid for.	Temporary embankment removal shall be paid for under item 203.02. The quantity has been adjusted in the Itemized Proposal and G-04. See Addendum #4.
131	012	RCC	Please provide the AMPERAGE requirements for the HVAC EQUIPMENT shown on H-03 for the purpose of sizing the Disconnects, Conduit and wire.	Please refer to E-17 note 3.
132	012	RCC	Please provide the AMPERAGE requirements for the PLUMBING EQUIPMENT shown on P-01 for the purpose of sizing the Disconnects , Conduit and wire.	Please refer to E-17 for the Toilet breaker (P-01, Mark EJ-1), and water heater breaker (P-01, Mark EWH-1). Please refer to E-17 note 3 for condensate pump breaker. Please refer to E-19 for sump pump controller breaker information. Please refer to E-34/E-36 for sump pump cable/conduit information (P-01, Mark SP-1 and Mark SP-2).
133	012	RCC	Please provide Wiring Diagrams and The Location for the Control Panels specified under ITEM 599.061802WE page 4 of 8 paragraph 2.8 I.	The control panels for the sump pumps is a typical lead/lag sump pump accessory to control the sump pumps based on water level rate of rise intensity or failure of one of the pumps. The controller shall have an oil sensor accessory as outlined in 599.061802WE. The Contractor is responsible to submit for review and approval an satisfactory control panel that meets the Contract requirements for controlling the lead/lag pumps.
134	012	RCC	Plumbing Drawings call out Water Pipe, will a Heat Trace System be required?	Please refer to E-17 for panel schedule indicating that the existing Heat Trace system is being maintained. Please also refer to P-02, Lower Level Plumbing Plan, Note A, which indicates the extent of existing Heat Trace system manipulation and connection of new heat trace to existing power.
135	012	RCC	Drawing A-10 calls out (4) Fire Alarm Devices no mention of Central Station Monitoring. Drawing E-12 Note 11 discusses a Fire Alarm 'SYSTEM" , please provide a Specification so that we may ascertain what is required.	Fire alarm system consists of 4 standalone (not centrally monitored or controlled by a Fire Alarm Control Panel (FACP)) hardwired and interconnected combination carbon monoxide/smoke detectors. The intent of the fire alarm system is to notify the occupants of the control house that a smoke or carbon monoxide event has been triggered. The occupants of the Control house will then call supervisors and/or first responders as required. A note will be added to drawing A-10 to clarify this.



**SUMMARY OF QUESTIONS**

Question #	RFI #	Contractor	Question	Response
136	013	GCCOM	On Drawing S-22 lateral bracing is called out as "WT5x19.5 (TYP.)" but on sheet S-09 lateral bracing is called out at "WT7x54.5 (TYP.)" please advise which is correct?	WT5X19.5 is correct. S-09 will be revised accordingly.
137	013	GCCOM	Please reference section A on S-17, it shows 2 angles connecting FB1 to existing G1. On the As-Built in Volume 2, sheet 24, where they call out cross section B-B (the location of FB1) they only show one connection angle. The bolt pattern does match. Please advise if the remaining bolts will be paid under 586.10.	The proposed floor beam naming convention does not match the naming convention from the original 1928 shop drawings. Proposed floor beam FB1 is at the bascule toe, where existing floor beam FB 6 was. See Volume 2 sheet 22 for relevant section and bolt group.
138	014	GCCOM	Please reference sheet S-56, the connection details for the sidewalk bracket show that the existing pieces are getting new bolts. Is this correct?	Correct.
139	015	American Bridge	The Plan view of the Abutment Fender shown on Sheet S-07 calls out a walkway that is "not shown for clarity". Please identify where details of this platform can be found.	See revised S-07 included with Addendum #5.
140	015	American Bridge	The Fender System Notes on Sheet G-07 call out for an FRP Handrail. Please provide location and details.	FRP handrail not required. See revised G-07 included with Addendum #5.
141	015	American Bridge	Regarding pay item description 599.061206 WE, Permanent Bridge Operation and Maintenance. Method of Measurement section 4.0 states the work will be measured per unit "month" of operation and maintenance, which shall include all materials, equipment, and labor necessary to complete the work as identified on the plans and as noted herein. There will be periods of time that the bridge will not open for boats or "operating" the bridge but is still being maintained per the requirements in the specification. Please confirm the contractor will be compensated at the Unit price per month for maintaining but not actually operating the bridge during those periods of time regardless of opening/operating the bridge.	Confirmed. Unit bid price should reflect both periods of time that the bridge is opening regularly and time that it is not but will still need to be maintained per the specifications.
142	015	American Bridge	Is there currently a posted weight restriction for the bridge? If so, please confirm what it is.	The bridge is posted for 15 tons. There are signs indicating thus in both directions.