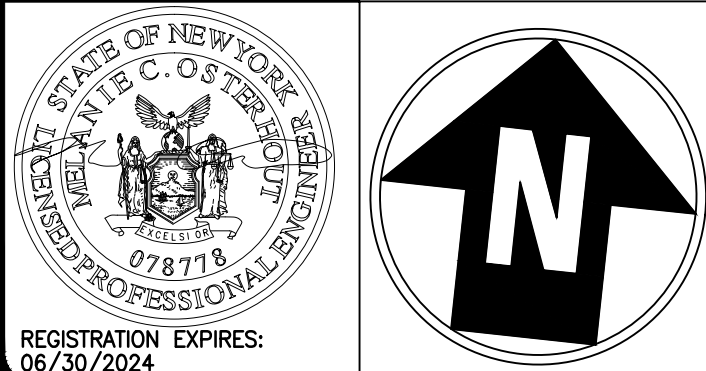


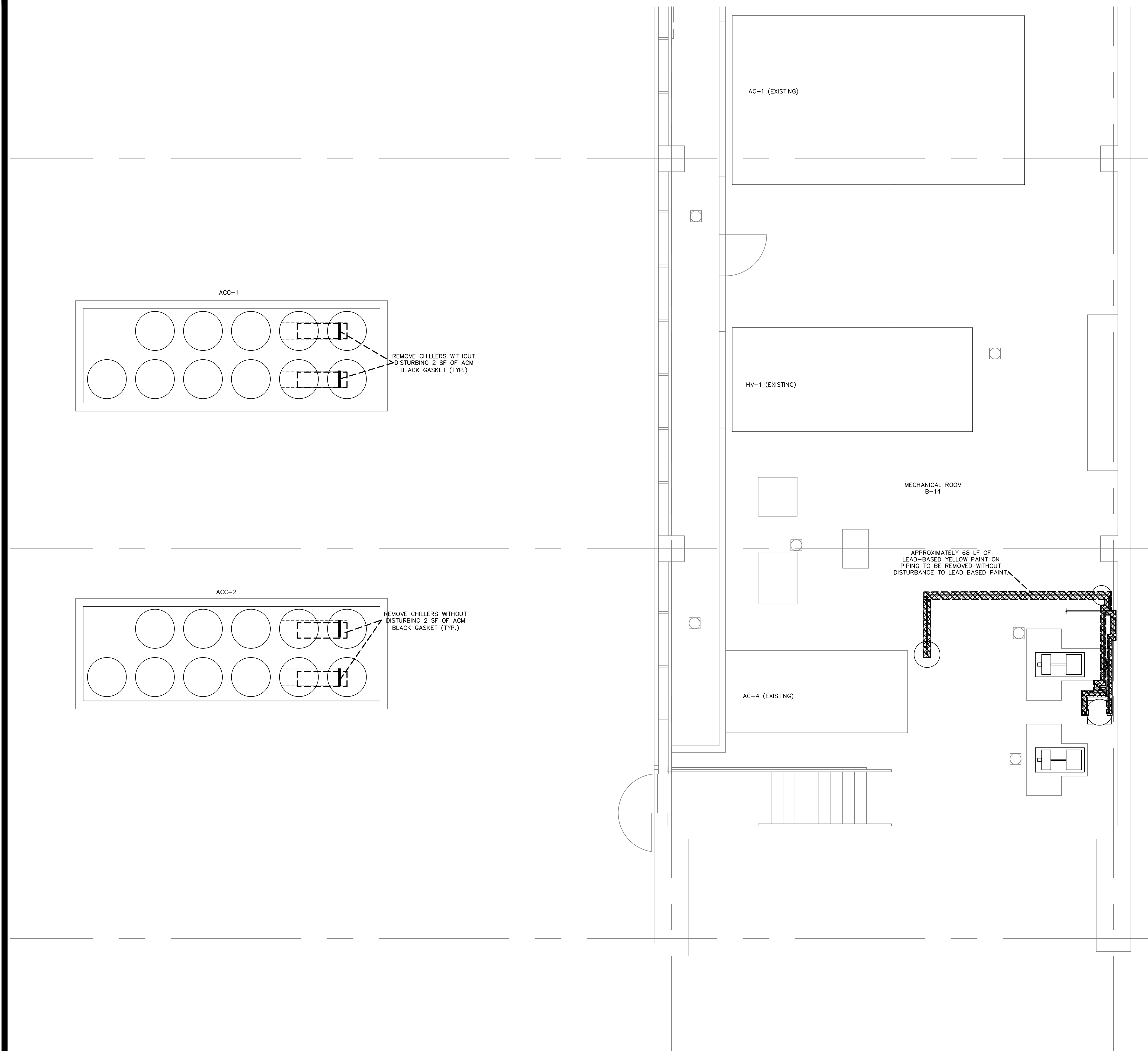
WARNING:

THE ALTERATION OF THIS MATERIAL IN ANY WAY, UNLESS DONE UNDER THE DIRECTION OF A COMPARABLE PROFESSIONAL, I.E. ARCHITECT FOR AN ARCHITECT, ENGINEER FOR AN ENGINEER OR LANDSCAPE ARCHITECT FOR A LANDSCAPE ARCHITECT, IS A VIOLATION OF THE NEW YORK STATE EDUCATION LAW AND/OR REGULATIONS AND IS A CLASS 'A' MISDEMEANOR.



CONTRACT:	HVAC
TITLE:	REPLACE BUILDING CHILLERS, BUILDING 144
LOCATION:	COOK CHILL PRODUCTION CENTER 145 OLD ORANGEBURG ROAD ORANGEBURG, NY
CLIENT:	OFFICE OF MENTAL HEALTH

	12/6/2023	BID DOCUMENTS
MARK	DATE	DESCRIPTION
PROJECT NUMBER:	47430 - H	
DESIGNED BY:	MCO	
DRAWN BY:	JKS	
FIELD CHECK:		
APPROVED:		
SHEET TITLE:		
HAZARDOUS MATERIALS REMOVAL PLAN		
DRAWING NUMBER:		
H-100		
SHEET 4 OF 18		



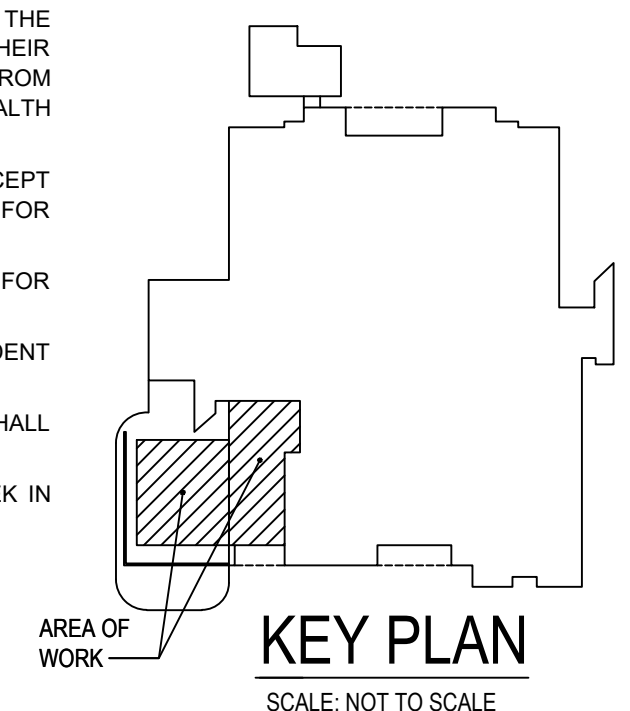
1. DIMENSIONS INDICATED ON THIS PLAN ARE APPROXIMATE.
2. THE PROJECT INCLUDES THE REMOVAL AND DISPOSAL OF ASBESTOS CONTAINING MATERIALS (ACM) AND LEAD BASED PAINT IN THE ORANGEBURG COOK CHILL FACILITY.
3. THE AREAS OF WORK WILL NOT BE OCCUPIED DURING PROJECT WORK.
4. ABATEMENT WORK SHALL BE COORDINATED WITH THE DIRECTOR'S REPRESENTATIVE. RULES AND REGULATIONS IN NYS INDUSTRIAL CODE RULE 56, EPA, OSHA AND OTHER APPLICABLE LOCAL, STATE AND FEDERAL REGULATIONS SHALL BE FOLLOWED DURING THE PROJECT.
5. THE PIPE CONTAINING LEAD-BASED IS ANTICIPATED TO BE REMOVED IN ITS ENTIRETY (WITHOUT LEAD PAINT DISTURBANCE) THEREFORE THE SHUT DOWN AND ISOLATION OF EXISTING MECHANICAL EQUIPMENT SYSTEMS TO PREVENT CONTAMINATION AND DISPERSAL TO OTHER AREAS IN THE BUILDING WILL NOT BE REQUIRED.
6. CRITICAL ELECTRIC RUNS THROUGH THE PROJECT AREA SHALL REMAIN ACTIVE DURING THE PROJECT.
7. EXTERIOR AREAS BELOW GRADE WERE NOT INSPECTED.
8. SOLID WALLS, FLOORS, CEILINGS, ROOF DECKS AND OTHER SOLID SURFACES WERE NOT CORED DURING THE ASBESTOS INSPECTIONS.

	ABATEMENT QUANTITIES	
REMOVAL NOTES	MATERIAL DESCRIPTION	QUANTITY
1	ACM GASKET	APPROX. 4 SF
2	LEAD-BASED PAINT	APPROX. 68 LF

1. ASBESTOS ABATEMENT SHALL BE PERFORMED IN ACCORDANCE WITH FEDERAL, STATE, LOCAL REGULATIONS AND THE TERMS OF THE CONTRACT, ABATEMENT ACTIVITY WITHIN THE REMOVAL AREA SHALL BE PERFORMED INSIDE A CONTAINED WORK AREA THAT MEETS THE REQUIREMENTS OF OSHA 1926.1101, THE ASBESTOS HAZARD EMERGENCY RESPONSE ACT AND NEW YORK STATE DEPARTMENT OF LABOR CODE RULE 56.
2. CONTRACTOR RESPONSIBLE FOR OBTAINING NEW YORK STATE DEPARTMENT OF LABOR APPLICABLE VARIANCES OR SITE SPECIFIC VARIANCES, IF REQUIRED.
3. ABATEMENT ACTIVITY IN THE REMOVAL AREA SHALL BE PERFORMED WITHIN THE REQUIREMENTS OF OSHA 1926.1101, THE ASBESTOS HAZARD EMERGENCY RESPONSE ACT AND NEW YORK STATE DEPARTMENT OF LABOR CODE RULE 56. EXTERIOR ABATEMENT ACTIVITY THAT DISTURBS FRIABLE ASBESTOS MATERIALS OR RESULTS IN NON-FRIABLE ASBESTOS MATERIALS BEING MADE FRIABLE SHALL BE PERFORMED UNDER NEGATIVE PRESSURE WITHIN AN ISOLATED WORK AREA.
4. PROVIDE FOR MEANS, METHODS, TECHNIQUES, SEQUENCES AND PROCEDURES, AND FOR COORDINATING THE COMPLETION OF PORTIONS OF THE SCOPE OF WORK WITHIN THE SPECIFIED CONSTRUCTION SCHEDULE.
5. THE HAZARDOUS MATERIALS DRAWINGS ASSOCIATED WITH THIS PROJECT WERE REPRODUCED FROM AVAILABLE DRAWINGS. ACCORDINGLY, VARIATIONS WITHIN THE DEMARCATED WORK AREAS ARE EXPECTED AND SHALL HAVE NO IMPACT ON THE CONTRACT PRICE OR SCHEDULE.
6. PLACEMENT OF PERSONAL AND WASTE DECONTAMINATION UNITS WILL BE COORDINATED WITH AND APPROVED BY THE DIRECTOR'S REPRESENTATIVE.
7. VERIFY FIELD CONDITIONS, MEASUREMENTS AND QUANTITIES. REPORT DISCREPANCIES TO THE DIRECTOR'S REPRESENTATIVE IN WRITING.
8. NOTIFY THE DIRECTOR'S REPRESENTATIVE IN WRITING OF DISCREPANCIES BETWEEN THE CONTRACT DOCUMENTS AND FIELD CONDITIONS PRIOR TO THE START OF WORK.
9. SEE SPECIFICATION SECTION 003126 AND THE APPENDIX FOR THE HAZARDOUS MATERIALS REPORTS INCLUDING THE SAMPLE LOCATIONS, ANALYSIS RESULTS AND ASSUMPTIONS AND LIMITATIONS.
10. SEE THE FOLLOWING SPECIFICATIONS FOR THE ABATEMENT AND REMOVAL SPECIFICATIONS.

MATERIAL	SPECIFICATION
ASBESTOS	SECTION 028213
LEAD	SECTION 028303

11. THE QUANTITIES PROVIDED ARE APPROXIMATE. DETERMINE THE HAZARDOUS MATERIALS QUANTITIES IN THE FIELD.
12. THE BLACK GASKET ON THE COMPRESSORS IS AN ACM AND WILL REQUIRE ABATEMENT IF THE CHILLERS CANNOT BE REMOVED INTACT.
13. THE YELLOW PAINT ON THE YELLOW PIPING SERVING THE EXPANSION TANK IS A LEAD-BASED PAINT AND SHOULD BE REMOVED IN ITS ENTIRETY AND PROPERLY DISPOSED OF.
14. THE DRAWINGS DO NOT SHOW MOVABLE OBJECTS. IF MOVABLE OBJECTS ARE PRESENT, COORDINATE THE RELOCATION OF OBJECTS WITH THE DIRECTOR'S REPRESENTATIVE.
15. ATTEND A PRE-ABATEMENT MEETING AND PROVIDE A DETAILED ABATEMENT WORK PLAN FOR REVIEW.
16. PROVIDE FOR THE SAFETY OF THEIR EMPLOYEES DURING THE REMOVAL ACTIVITIES. PERFORM THE WORK IN A MANNER THAT PROVIDES THEIR EMPLOYEES WITH A WORKPLACE FREE FROM HAZARDS CAUSING SERIOUS HEALTH CONSEQUENCES OR INJURY.
17. VERIFY THAT THEIR PROPOSED LANDFILL(S) ACCEPT THE HAZARDOUS MATERIALS PROPOSED FOR REMOVAL.
18. WASTE MANIFEST SHALL BE PROVIDED FOR REMOVALS.
19. PLASTIC USED SHALL BE OF THE FIRE RETARDANT VISQUEEN TYPE.
20. ENCLOSED, LOCKABLE ASBESTOS DUMPSTER SHALL BE LOCATED IN CONTRACTOR STAGING AREA.
21. POST REQUIRED NOTICES AT LEAST ONE WEEK IN ADVANCE OR AS REQUIRED.



1" BAR EQUALS ONE INCH WHEN
DRAWING IS PRINTED TO SCALE