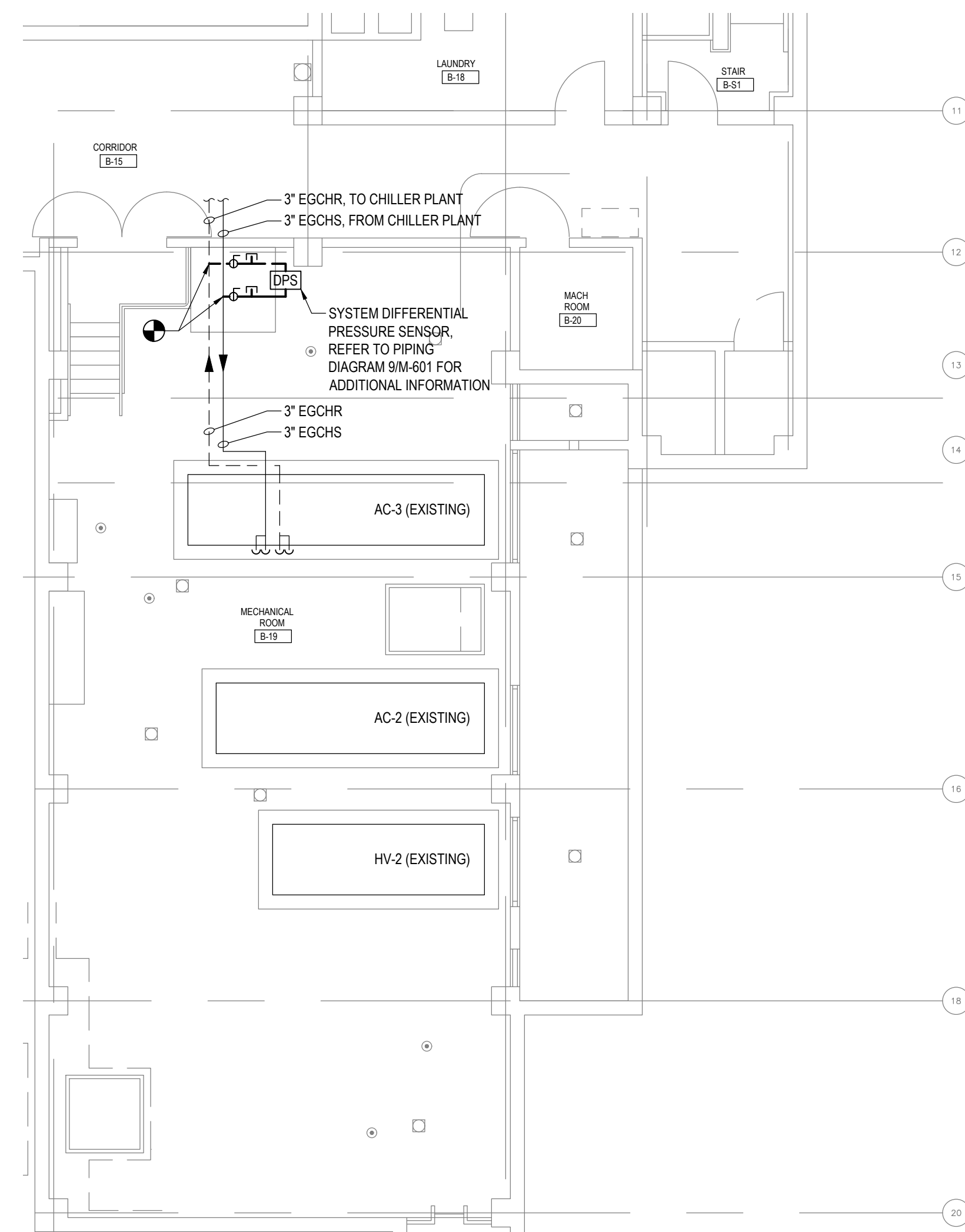
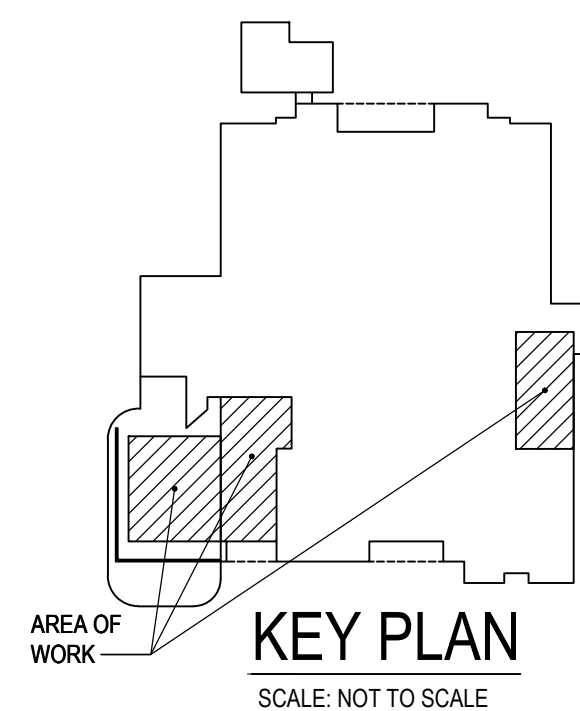


1 PARTIAL BASEMENT MECHANICAL ROOM B-14 PIPING PLAN
SCALE: 1/8" = 1'-0"



2 PARTIAL BASEMENT MECHANICAL ROOM B-19 PIPING PLAN
SCALE: 1/8" = 1'-0"



1" BAR EQUALS ONE INCH WHEN
DRAWING IS PRINTED TO SCALE

KEYED NOTES

- 1 PROVIDE 8" BUTTERFLY STYLE VALVES.
- 2 8" EGCHS/R STACKED ABOVE 4" EGCHS/R BY-PASS LINES, OFFSET FOR CLARITY.
- 3 PROVIDE 4" GCHS PIPING WITH BUTTERFLY VALVES, STRAINER, AND CONTROL VALVE. ENTIRETY OF VALVING IS NOT SHOWN ON PLAN FOR CLARITY. REFER TO 3M601 FOR ADDITIONAL INFORMATION.
- 4 PROVIDE SYSTEM SUPPLY TEMPERATURE SENSOR ON EXISTING 8" CHILLED WATER RETURN PIPING. PROVIDE SYSTEM RETURN TEMPERATURE SENSOR, AND SYSTEM FLOW METER ON 8" CHILLED WATER RETURN PIPING. REFER TO CHILLED WATER FLOW DIAGRAM 3/M-501 FOR ADDITIONAL INFORMATION.
- 5 SALVAGE EXISTING SUPPLY DIFFUSER FROM DUCTWORK REMOVALS. CLEAN EXISTING SUPPLY DIFFUSER WITH A MIX OF CLEANING SOLUTION AND WATER. INSTALL SUPPLY DIFFUSER BELOW EXISTING SUPPLY DUCT AT 8" 0" A.F.F. CONNECT TO EXISTING SUPPLY DUCT WITH 6"x6" S SUPPLY DUCTWORK. PROVIDE VOLUME DRAIN IN VERTICAL SECTION OF 6"x6" 8/M-601 FOR ADDITIONAL INFORMATION.
- 6 FURNISH TO THE E-CONTRACT A DIGITAL ENERGY METER WITHIN NEMA 1 RATED ENCLOSURE CAPABLE OF SEAMLESSLY INTEGRATING INTO THE BUILDING AUTOMATION SYSTEM FOR MONITORING ELECTRICAL SERVICE TO CHILLERS ACC-1 AND ACC-2. E-CONTRACT SHALL INSTALL THE METER WITHIN MECHANICAL ROOM B-14. INTEGRATE THE DIGITAL ENERGY METER INTO THE BUILDING AUTOMATION SYSTEM. REFER TO CONTROL DIAGRAM 1/M-802 AND SPECIFICATION SECTION 2392A FOR ADDITIONAL INFORMATION.
- 7 PROVIDE 3" BALL STYLE ISOLATION VALVES.

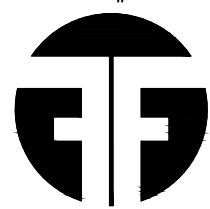
GENERAL NOTES

1. FIELD VERIFY EXISTING CONDITIONS PRIOR TO INITIATING WORK FOR THIS PROJECT. CONTRACT DOCUMENTS HAVE BEEN DEVELOPED FROM EXISTING DRAWINGS AND FIELD INVESTIGATION. NOTIFY THE DIRECTOR'S REPRESENTATIVE OF INCONSISTENCIES IDENTIFIED BETWEEN THE CONTRACT DOCUMENTS AND FIELD CONDITIONS THAT MAY AFFECT THE ABILITY TO PERFORM THE WORK INDICATED ON THE CONTRACT DOCUMENTS.
2. PERFORM CUTTING AND PATCHING REQUIRED FOR THE WORK, UNLESS OTHERWISE NOTED. PATCHING SHALL MATCH SURROUNDING EXISTING SURFACES IN KIND. PROVIDE FIRE STOPPING FOR PENETRATIONS THROUGH INTERIOR WALLS.
3. COORDINATE UTILITY SHUTDOWNS WITH DIRECTOR'S REPRESENTATIVE.
4. NO MATERIAL OR EQUIPMENT SHALL BE IN CONTACT WITH EXISTING FIRE SPRINKLER PIPING.
5. PROVIDE HEAVY DUTY SPREADER PLATES BELOW THE ENTIRETY OF LIFTING/RIGGING EQUIPMENT. VEHICLES INCLUDING TRUCKS, THE EQUIPMENT BEING RIGGED, AND OTHER EQUIPMENT, ON THE GRADE/PAVEMENT/GROUND TO SPREAD OUT THE LOAD. HEAVY DUTY SPREADER PLATES SHALL BE MINIMUM 1/2" THICK STEEL PLATES (OR EQUAL) TO PREVENT DAMAGING UNDERGROUND UTILITIES. THE EXISTING GRADE/PAVEMENT/GROUND AND UNDERGROUND UTILITIES SHALL NOT BE DAMAGED BY LIFTING/RIGGING EQUIPMENT. VEHICLES INCLUDING TRUCKS, THE EQUIPMENT BEING RIGGED, OR OTHER EQUIPMENT. DAMAGE TO GRADE/PAVEMENT/GROUND AND/OR UNDERGROUND UTILITIES SHALL BE RESTORED TO PRIOR CONDITION BY THE CONTRACTOR AT NO ADDITIONAL COST TO THE STATE.
6. CEILING WORK AREA WITHIN THE MECHANICAL ROOMS IS CONGESTED WITH PIPING, DUCTWORK, AND CONDUIT. PIPING WITHIN THE MECHANICAL ROOMS IS INSTALLED BETWEEN 10'-0" TO 15'-0" AFF.
7. VALVING AND OTHER ACCESSORIES ARE NOT SHOWN FOR CLARITY, REFER TO THE PIPING DIAGRAM ON M-501 FOR ADDITIONAL INFORMATION.
8. PRIOR TO MAKING FINAL PIPING CONNECTIONS TO EQUIPMENT AND THE EXISTING SYSTEM, FLUSH THE ENTIRE PIPING SYSTEM.
9. PRIOR TO DRILLING THE CONCRETE FLOOR SLAB AND THE WALL, AS REQUIRED TO INSTALL CONTROLS WIRING/CONDUIT AND ANY OTHER UTILITIES PENETRATING FLOORS/WALLS, LOCATE AND MARK EXISTING IN-CONCRETE SLAB ELECTRICAL CONDUIT AND STEEL REBARS USING ELECTRONIC DEVICE SUCH AS SCANNER. THE CONTRACTOR IS FULLY RESPONSIBLE TO REPAIR AT OWN EXPENSE ELECTRICAL CIRCUIT (CONDUIT AND WIRES) DAMAGED DURING THE CONTRACT WORK AT NO COST TO STATE.



CONSULTANT

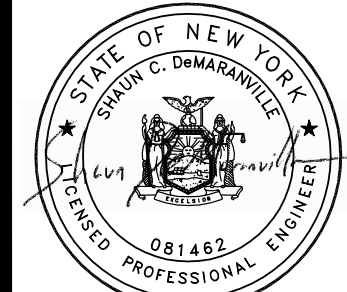
CERTIFICATE OF AUTHORIZATION #: 017869



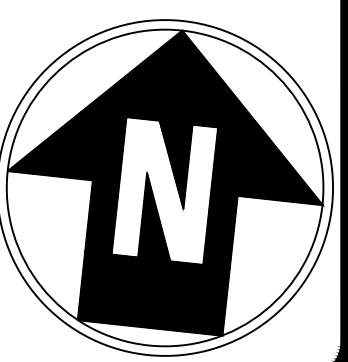
Friedman Fisher Associates, P.C.

WARNING:

THE ALTERATION OF THIS MATERIAL IN ANY WAY,
UNLESS DONE UNDER THE DIRECTION OF A COMPARABLE
PROFESSIONAL, I.E. ARCHITECT FOR AN ARCHITECT,
ENGINEER FOR AN ENGINEER OR LANDSCAPE ARCHITECT
FOR A LANDSCAPE ARCHITECT, IS A VIOLATION OF THE
NEW YORK STATE EDUCATION LAW AND/OR REGULATIONS
AND IS A CLASS 'A' MISDEMEANOR.



REGISTRATION EXPIRES:
10/31/24



CONTRACT:

HVAC

TITLE: REPLACE BUILDING CHILLERS,
BUILDING 144

LOCATION:
COOK CHILL PRODUCTION CENTER
145 OLD ORANGEBURG ROAD
ORANGEBURG, NY

CLIENT: OFFICE OF
MENTAL HEALTH

[illegible]

PARTIAL BASEMENT PIPING PLANS

DRAWING NUMBER:

M-101

SHEET 8 OF 18