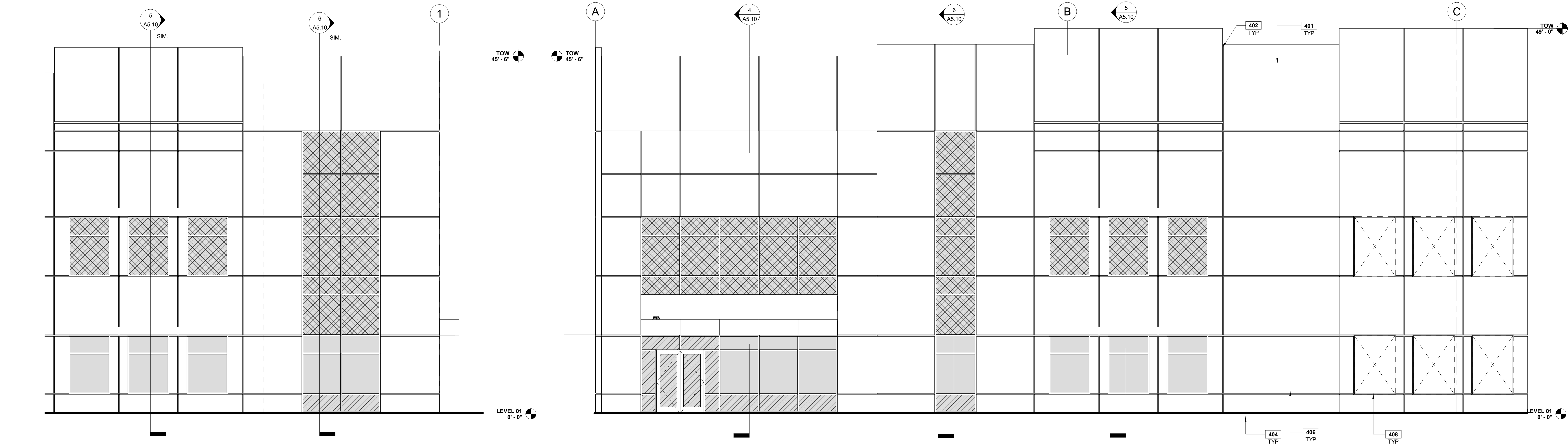


| NO. | DATE       | DESCRIPTION      |
|-----|------------|------------------|
|     | 02.09.2024 | ISSUE FOR PERMIT |



**ENLARGED ELEVATION - ENTRANCE**  
SCALE: 3/16" = 1'-0" **3**

**ENLARGED ELEVATION - STOREFRONT ENTRANCE**  
SCALE: 3/16" = 1'-0" **2**

**GLAZING LEGEND**

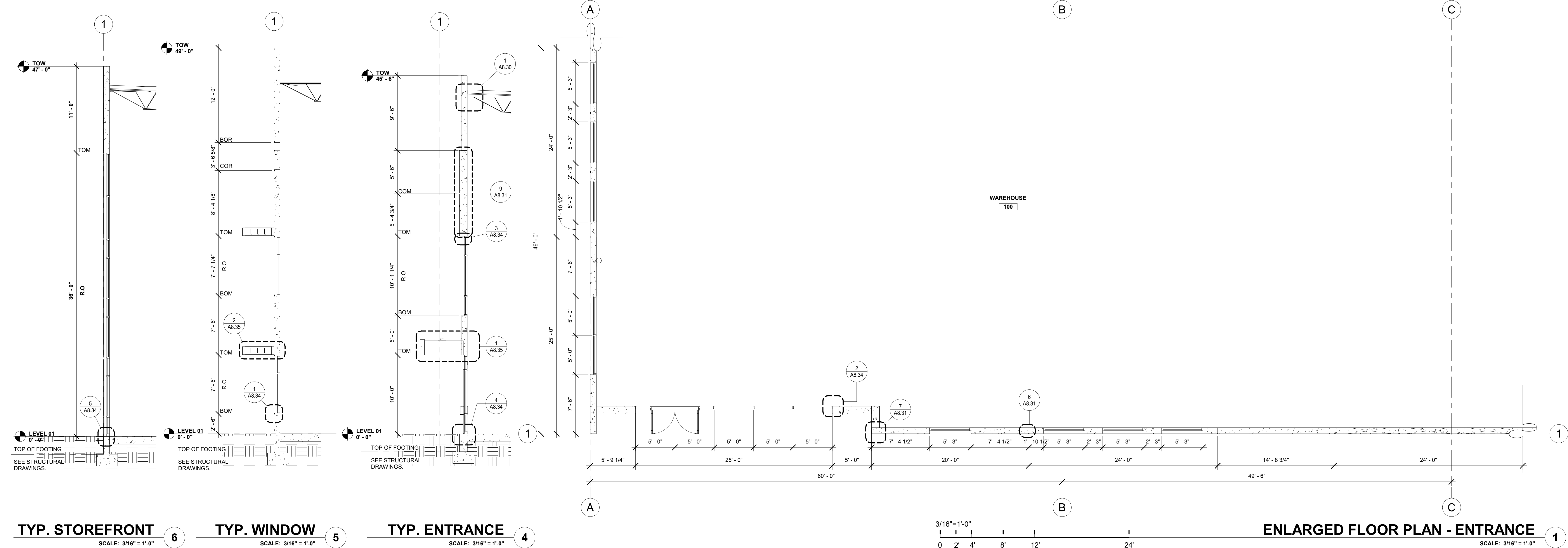
- GL-01 - INSULATED GLAZING UNIT**  
1 INCH THICK WITH 1/4" THICK CLEAR LITES AND LOW-E COATING  
(SEE ENERGY CALCULATIONS FOR REQUIREMENTS)  
[ENSURE ENERGY CALCULATIONS INCLUDE SHGC AND VT VALUES]
- GL-02 - TEMPERED SAFETY GLAZING**  
TYPE GL-01 WITH TEMPERED SAFETY GLAZING
- GL-03 - SPANDREL GLAZING**  
TYPE GL-01 WITH SPANDREL GLAZING

**ELEVATION NOTES**

- TOW = TOP OF CONCRETE + 1-1/2" BLOCKING
- EXTERIOR SIDE OF CONCRETE PANELS SHALL RECEIVE THE FOLLOWING:
  - ONE (1) COAT PRIMER AND ONE (1) COAT MEDIUM TEXTURE PAINT
  - WARRANTY: 10 YEARS
- EXTERIOR HOLLOW METAL DOORS AND FRAMES SHALL BE FACTORY PRIMED AND RECEIVE TWO (2) COATS ALKYD SEMI-GLOSS PAINT.
- DOWNSPOUT GUARDS SHALL RECEIVE TWO (2) COATS ALKYD SEMI-GLOSS PAINT
- COPINGS, SCUPPER BOXES, AND DOWNSPOUTS SHALL BE PAINTED TO MATCH ADJACENT WALL COLOR.

**SHEET NOTES**

- 401** CONCRETE PANEL PAINTED WITH MEDIUM TEXTURE PAINT.
- 402** CONCRETE PANEL JOINT. SEE PANEL DRAWINGS.
- 404** FINISH GRADE VARIES. SEE CIVIL DRAWINGS.
- 406** TYPE 'B' 2-3/4" x 3/4" REVEAL.
- 408** KNOCKOUT PANEL FOR FUTURE OPENING.



**TYP. STOREFRONT**  
SCALE: 3/16" = 1'-0" **6**

**TYP. WINDOW**  
SCALE: 3/16" = 1'-0" **5**

**TYP. ENTRANCE**  
SCALE: 3/16" = 1'-0" **4**

**ENLARGED FLOOR PLAN - ENTRANCE**  
SCALE: 3/16" = 1'-0" **1**