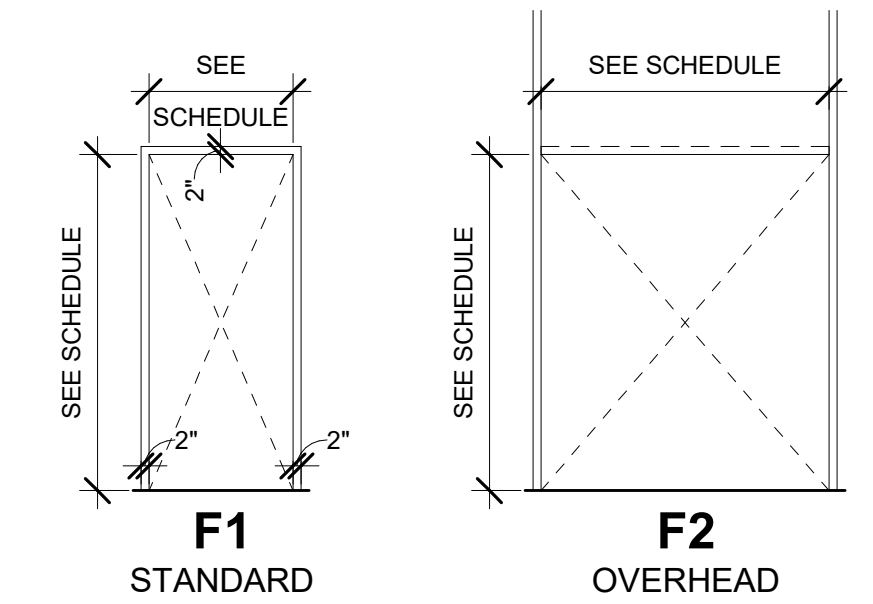
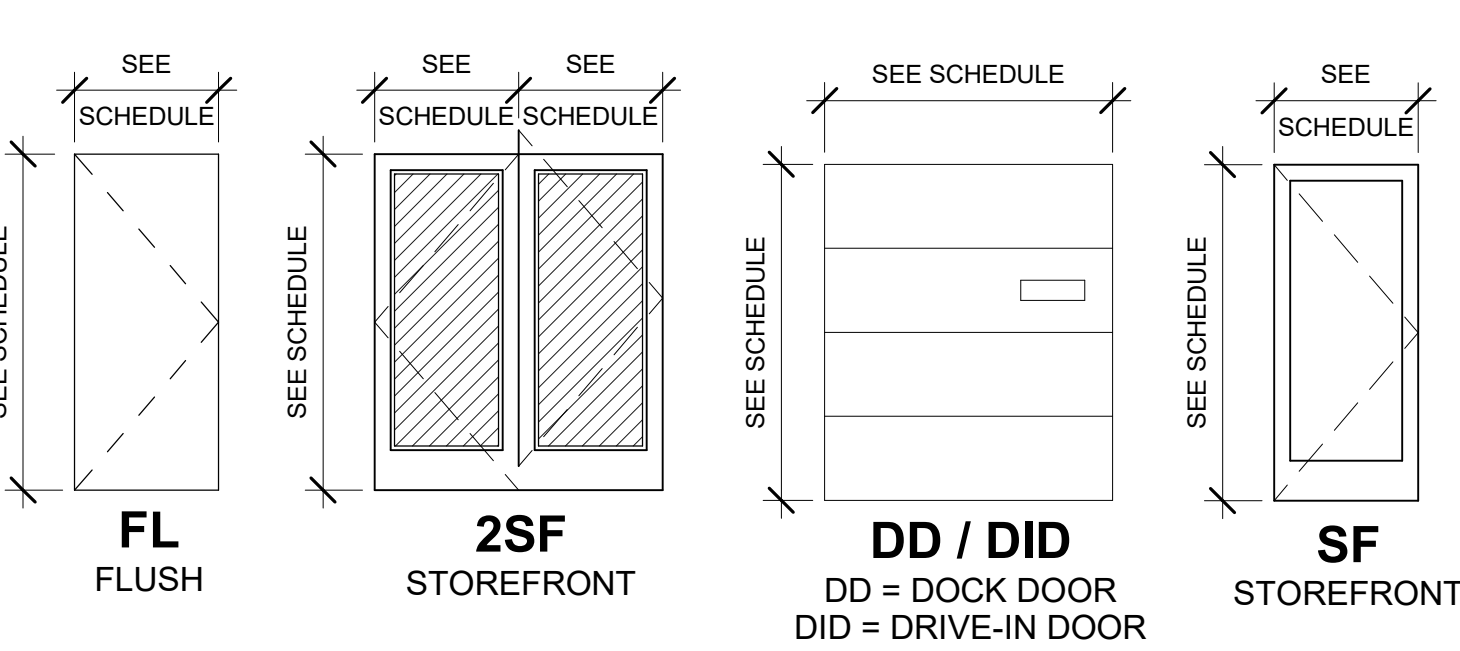


DOOR SCHEDULE																
#	COUNT	GENERAL								FRAME					HARDWARE SET	COMMENTS
		TYPE	WIDTH	HEIGHT	THICKNESS	MATERIAL	FINISH	GLAZING	FIRE RATING	TYPE	MATERIAL	FINISH	GLAZING	THROAT		
LEVEL 01																
A	35	FL	3'-0"	7'-0"	0'-1 3/4"	HM	PAINTED	-	-	F1	HM	PAINTED	-	0'-9 1/4"	1B	
B	1	FL	4'-0"	7'-0"	0'-1 3/4"	HM	PAINTED	-	-	F1	HM	PAINTED	-	0'-9 1/4"	1A	ELECTRICAL ROOM - 45MIN RATED DOOR
C	1	2FL	3'-0" / 3'-0"	7'-0"	0'-1 3/4"	HM	PAINTED	-	-	F1	HM	PAINTED	-	0'-9 1/4"	2A	FIRE PUMP ROOM - 45MIN RATED DOOR
D1	4	DIV	12'-0"	16'-0"	0'-1 5/8"	GALV. STEEL	PREFINISHED	-	-	F2	GALV. STEEL	PAINTED	-	0'-0"	-	
D2	121	DV	9'-0"	10'-0"	0'-1 5/8"	GALV. STEEL	PREFINISHED	-	-	F2	GALV. STEEL	PREFINISHED	-	0'-0"	-	FULLY EQUIPPED DOOR
E	4	2SF	3'-0" / 3'-0"	8'-0"	0'-1 3/4"	ALUMINIUM STOREFRONT	CLEAR ANODIZED	GL-02	-	SEE ELEVATIONS	ALUMINIUM STOREFRONT	CLEAR ANODIZED	-	0'-0"	10A	
E2	1	SF	3'-0"	7'-0"	0'-1 3/4"	HM	PAINTED	GL-02	-	F1	ALUMINIUM STOREFRONT	CLEAR ANODIZED	-	0'-0"	9A	

FRAME TYPES



DOOR TYPES



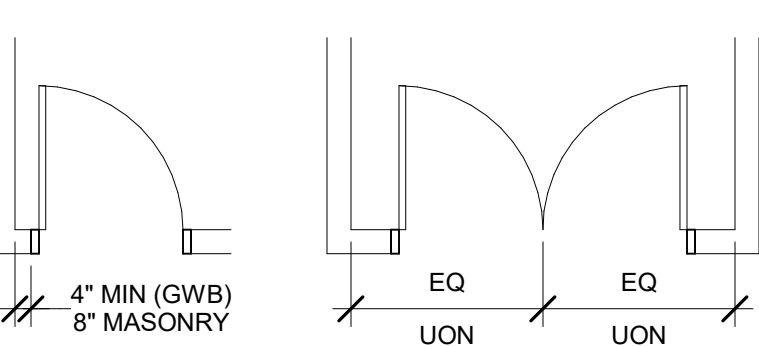
HARDWARE NOTES

- SEE OUTLINE / OWNER SPECIFICATIONS FOR DETAILED HARDWARE REQUIREMENTS.
- DOOR HANDLES, PULLS, LATCHES, LOCKS AND OTHER OPERATING DEVICES SHALL NOT REQUIRE TIGHT GRASPING, TIGHT PINCHING OR TWISTING OF THE WRIST TO OPERATE. THE UNLATCHING OF ANY DOOR OR LEAF SHALL NOT REQUIRE MORE THAN ONE OPERATION.
- HOLLOW METAL DOOR FRAMES SHALL BE MIN. 14 GA WELDED AND PRIMED. ALL HOLLOW METAL DOORS SHALL BE MIN. 16 GA OR A-568 PRIMED COLD ROLLED STEEL. EXTERIOR HOLLOW METAL DOORS SHALL BE 1-3/4" THICK SEAMLESS FLUSH FOAM FILLED.
- EXTERIOR HARDWARE SHALL HAVE A DULL CHROME FINISH (626D) AND BE OF SERIES A COMMERCIAL QUALITY. DOOR HANDLES SHALL BE LEVER DESIGN. HINGES AND LATCHES SHALL BE STEEL WITH A CHROME BRUSHED FINISH AND ALL CLOSERS SHALL BE ALUMINUM.
- ENSURE LATCH GUARDS ARE COMPATIBLE WITH LOCKSET TYPE AND POSITION.
- DOCK DOORS SHOULD INCLUDED WITH 3" TRACKS, VISION PANEL(S) AND 50,000 CYCLE SPRINGS. DOORS SHALL BE MANUALLY OPERATED AND INSULATED (R-7), AND EQUIPPED WITH WEATHER-STRIPPING AT THE JAMBS, HEAD AND SILL.
- OVERHEAD DOORS SHALL BE COUNTERBALANCED SECTIONAL DOORS WITH A BAKED-ON ENAMEL PRIME FINISH.
- INSTALL SLIDE BOLTS ABOVE LEVEL OF DOOR GUARDS. (Z-GUARD OR OTHER).

HARDWARE SETS (EXTERIOR)

- SET 1: HM SINGLE - WAREHOUSE / UTILITY ROOM**
BALL-BEARING HINGES (6 @ 7'-0" DOORS, 4 @ DOORS OVER 7'-0")
SET 1A: STOREROOM LOCKSET
SET 1B: RIM EXIT DEVICE
CYLINDER HOUSING
SMALL FORMAT INTERCHANGEABLE CORE
CLOSER
THRESHOLD
PERIMETER GASKETING
DOOR SWEEP
DRIIP CAP
LATCH GUARD
CHAIN DOOR CHECK
- SET 2: HM PAIR - WAREHOUSE / UTILITY ROOM**
BALL-BEARING HINGES (6 @ 7'-0" DOORS, 8 @ DOORS OVER 7'-0")
SET 2A: STOREROOM LOCKSET
SET 2B: RIM EXIT DEVICE (ACTIVE LEAF)
FLUSH BOLTS (INACTIVE LEAF)
CYLINDER HOUSING
SMALL FORMAT INTERCHANGEABLE CORE
DUST PROOF STRIKE
CLOSER
THRESHOLD
PERIMETER GASKETING
DOOR SWEEP
DRIIP CAP
ASTRAGAL
CHAIN DOOR CHECK

TYPICAL DOOR LOCATIONS

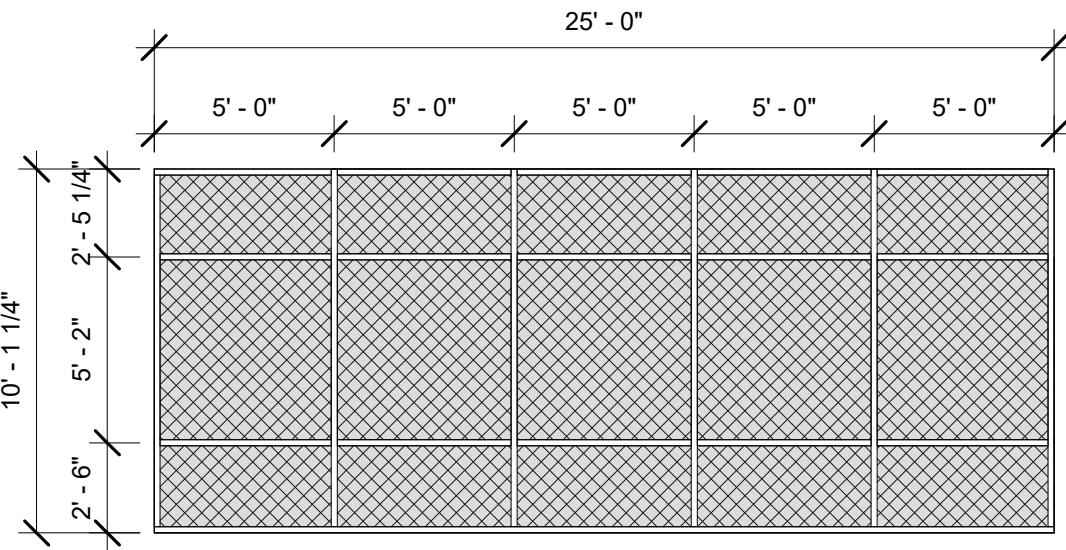


HARDWARE SETS (STOREFRONT)

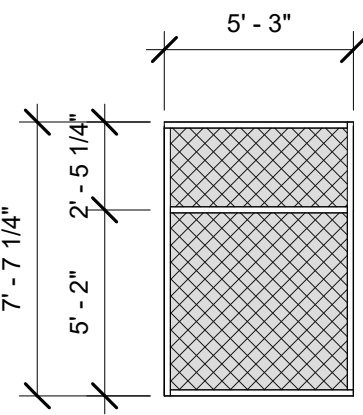
- SET 3: ALUM. SINGLE (INTERIOR / EXTERIOR)**
PIVOT SET
KEYED CYLINDER (ENTRANCE DOORS ONLY)
SET 9A: PUSH BAR
SET 9B: RIM EXIT DEVICE
PULL HANDLE
CLOSER
10" BOTTOM RAIL
THRESHOLD (EXTERIOR DOORS ONLY)
WEATHERSTRIPPING (EXTERIOR DOORS ONLY)
DOOR SWEEP (EXTERIOR DOORS ONLY)
SILENCERS
- SET 10: ALUM. PAIR (INTERIOR / EXTERIOR)**
PIVOT SETS
KEYED CYLINDER (ENTRANCE DOORS ONLY)
SET 10A: PUSH BARS
SET 10B: CONCEALED VERTICAL ROD EXIT DEVICE
PULL HANDLES
CLOSERS
10" BOTTOM RAILS
THRESHOLD (EXTERIOR DOORS ONLY)
DOOR SWEEPS (EXTERIOR DOORS ONLY)
WEATHERSTRIPPING (EXTERIOR DOORS ONLY)
SILENCERS

GLAZING LEGEND

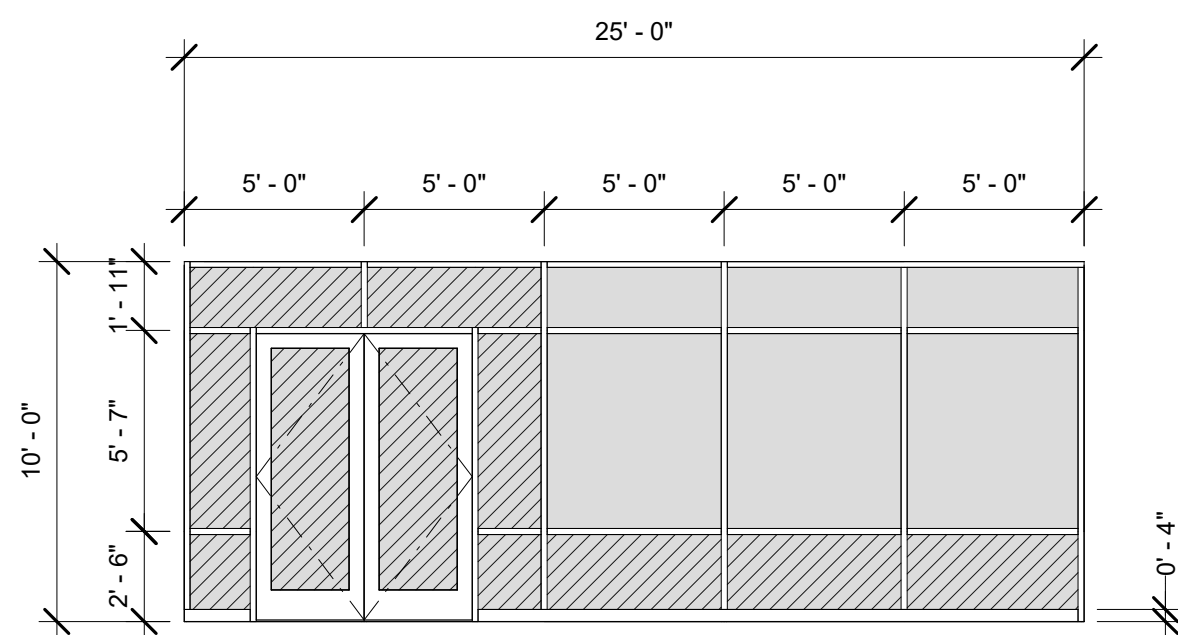
- GL-01 - INSULATED GLAZING UNIT**
1 INCH THICK WITH 1/4" THICK CLEAR LITES AND LOW-E COATING
(SEE ENERGY CALCULATIONS FOR REQUIREMENTS)
[ENSURE ENERGY CALCULATIONS INCLUDE SHGC AND VT VALUES]
- GL-02 - TEMPERED SAFETY GLAZING**
TYPE GL-01 WITH TEMPERED SAFETY GLAZING
- GL-03 - SPANDREL GLAZING**
TYPE GL-01 WITH SPANDREL GLAZING



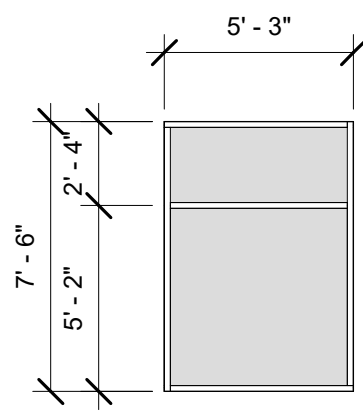
GLAZING TYPE G2
SCALE: 3/16" = 1'-0"



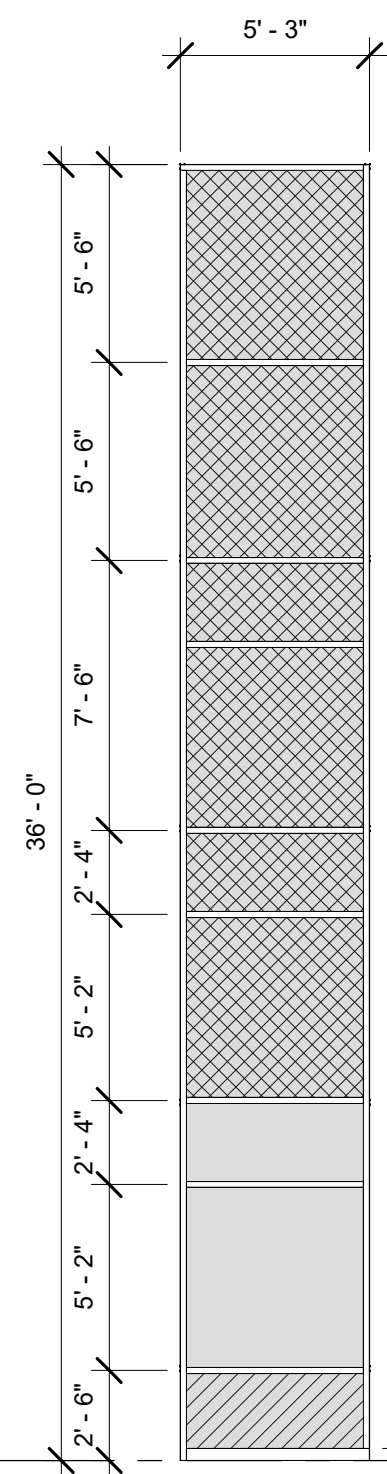
GLAZING TYPE G4
SCALE: 3/16" = 1'-0"



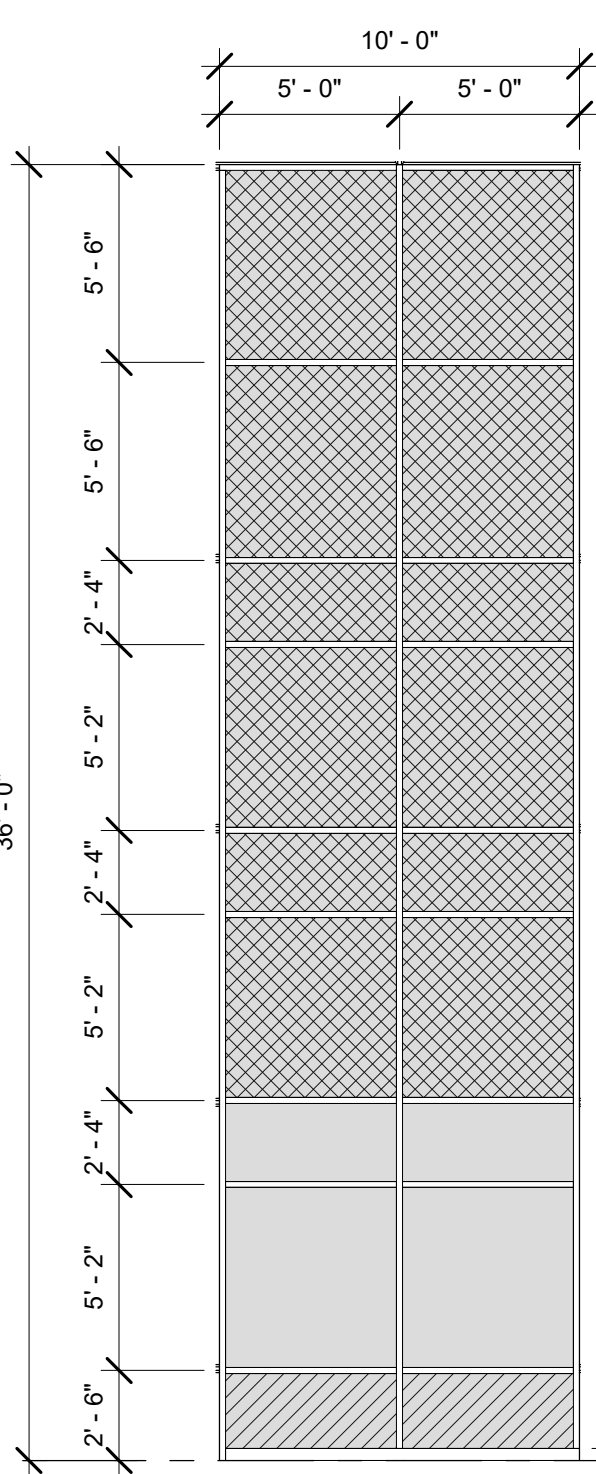
GLAZING TYPE G1
SCALE: 3/16" = 1'-0"



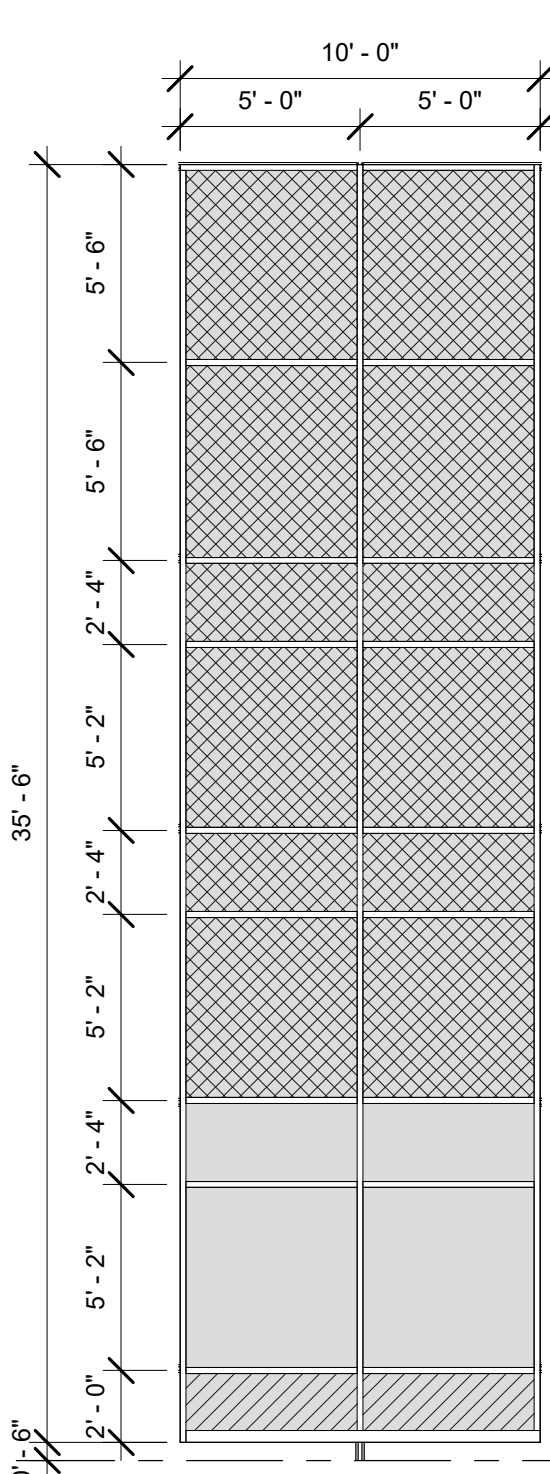
GLAZING TYPE G3
SCALE: 3/16" = 1'-0"



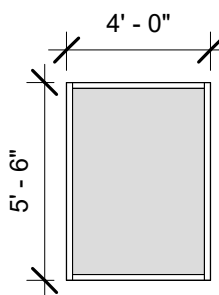
GLAZING TYPE G5
SCALE: 3/16" = 1'-0"



GLAZING TYPE G6
SCALE: 3/16" = 1'-0"



GLAZING TYPE G6A
SCALE: 3/16" = 1'-0"



GLAZING TYPE G7
SCALE: 3/16" = 1'-0"

DESIGNER / BUILDER

ARCO
DESIGN/BUILD

44 SOUTH BROADWAY, SUITE 1003
WHITE PLAINS, NY 10601
P: 914.821.5535 F: 914.306.6010

ADB / DESIGN SERVICES

PROJECT TITLE

**ROCKLAND
LOGISTICS
CENTER BLDG 1**

25 OLD MILL RD.
SUFFERN, NY 10901

OWNER

BROOKFIELD PROPERTIES
1 MEADOWLANDS PLAZA, SUITE 802
EAST RUTHERFORD, NJ 07073

ARCHITECT

ADB / DESIGN SERVICES LLC
44 SOUTH BROADWAY, SUITE 1003
WHITE PLAINS, NY 10601

CIVIL ENGINEER

DYNAMIC ENGINEERING CONSULTANTS
1904 MAIN STREET
LAKE COMO, NJ 07719

STRUCTURAL ENGINEER

ADB STRUCTURAL ENGINEERING
325 S. ALABAMA ST. SUITE 200
INDIANAPOLIS, IN 46204

MECHANICAL ENGINEER

NATIONAL DESIGN BUILD SERVICES
11840 BORMAN DRIVE
MARYLAND HEIGHTS, MO 63146

ELECTRICAL ENGINEER

FXB ENGINEERING
5 CHRISTY DRIVE, SUITE 307
CHADDS FORD, PA 19317

PLUMBING ENGINEER

MCCARTHY ENGINEERING
2500 E HIGH STREET, SUITE 630
POTTSTOWN, PA 19464

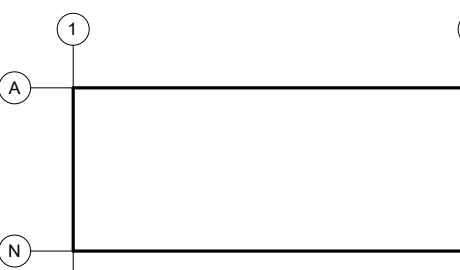
FIRE PROTECTION ENGINEER

S.A. COMUNALE
2500 NEWPARK DRIVE
BARBERTON, OH 44203

SEAL

JOSEPH V. DIGIORGIO | NY: 042948

KEY PLAN



SUBMITTALS

NO. DATE DESCRIPTION
02.09.2024 ISSUE FOR PERMIT

PROJECT NO.

AS397-22 | NY154

DRAWN BY

AR

SHEET TITLE

**DOOR & GLAZING
SCHEDULE**

SHEET NO.

A7.00