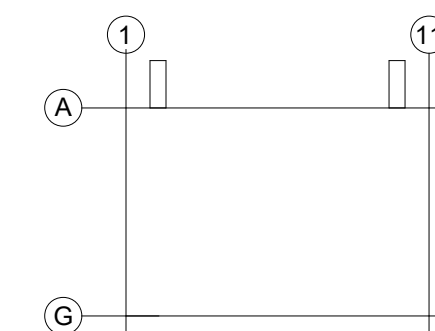


SEAL

JOSEPH V. DIGIORGIO | NY: 042948

KEY PLAN



SUBMITTALS

NO.	DATE	DESCRIPTION
02.09.2024	02.09.2024	ISSUE FOR PERMIT

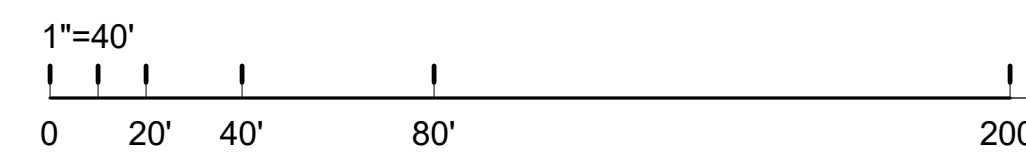
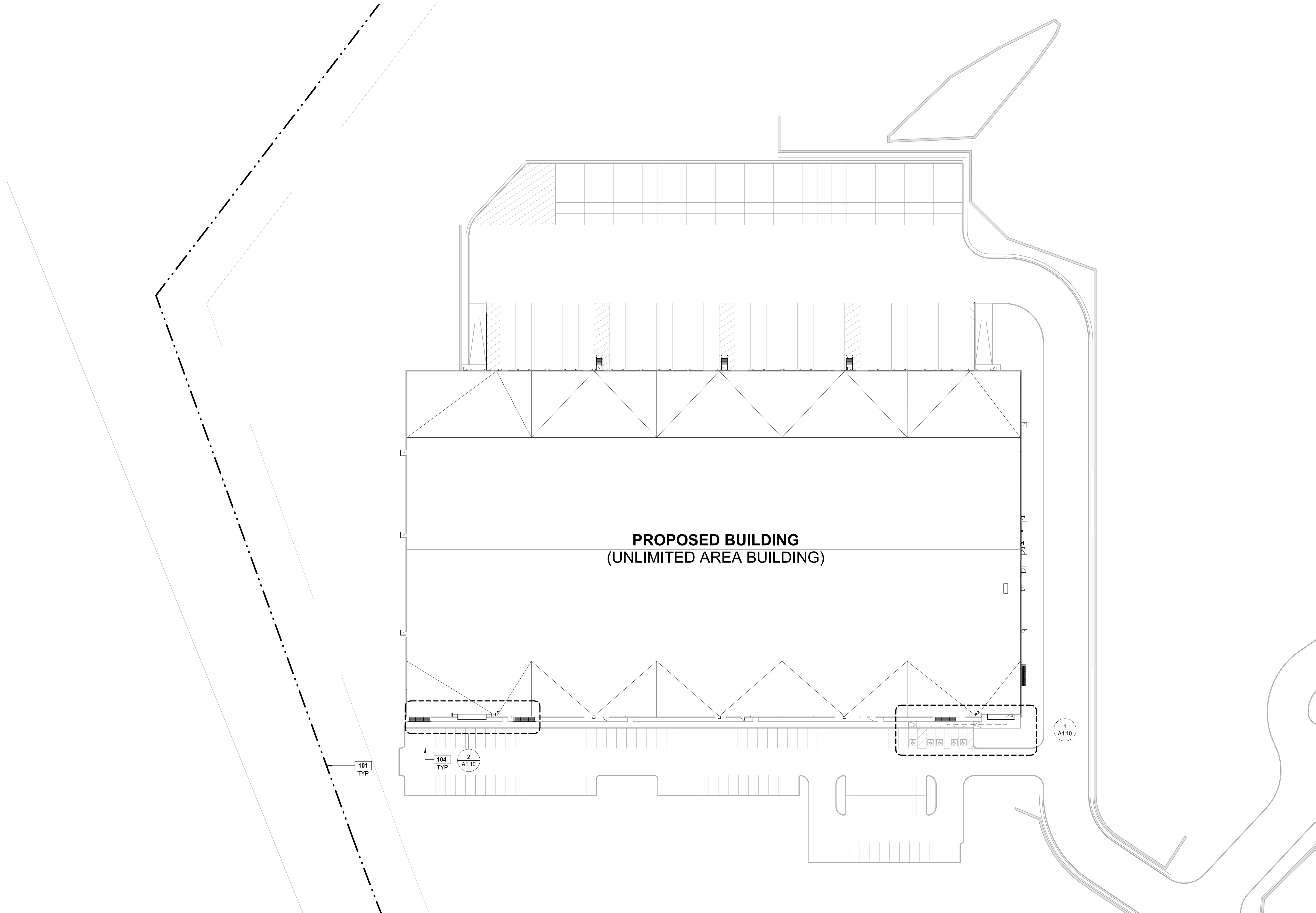
PROJECT NO.  
AS397-22 | NY154

DRAWN BY  
AR

SHEET TITLE  
**ARCHITECTURAL  
SITE PLAN**

SHEET NO.

**A1.00**



**SITE PLAN**

SCALE: 1" = 40'-0"

1

#### SITE PLAN LEGEND

---	PROPERTY LINE	---	ACCESSIBLE PATH OF TRAVEL W/ MAX CROSS SLOPE 1:48 (2%)
←	ACCESSIBLE ENTRANCE		

#### SHEET NOTES

- 101 PROPERTY LINE. SEE CIVIL DRAWINGS.  
104 PAINTED PARKING STRIPING PER CITY STANDARDS, SEE CIVIL DRAWINGS.

#### SITE PLAN NOTES

- ARCHITECTURAL SITE PLAN IS FOR REFERENCE ONLY. SEE CIVIL DRAWINGS FOR DETAILED SITE PLAN SCOPE.
- ALL SIDEWALKS TO HAVE BROOM FINISH WITH EXPANSION JOINTS EVERY 30'-0" MAX. COORDINATE EXTENTS WITH CIVIL DRAWINGS. ALL CURB JOINTS SHALL ALIGN WITH SIDEWALK JOINTS.
- SIDEWALK SHALL BE DOWELED INTO SLAB ON GRADE AT STOREFRONT ENTRANCE AREA(S).
- CONTRACTORS SHALL VERIFY GRADE ELEVATIONS COMPLY WITH ACCESSIBILITY REQUIREMENTS.
- CONTROL JOINTS SHALL LINE UP WITH VERTICAL PANEL REVEALS ADJACENT TO SIDEWALK.
- PICTURE FRAMING AT BUILDING ENTRANCE IS TO BE CONFIRMED WITH OWNER. PICTURE FRAMING AT SIDEWALK FRONTAGE IS NOT REQUIRED. ALL JOINTS THAT ARE NOT PICTURE FRAMED ARE TO HAVE A TOOLED EDGE.

#### ACCESSIBILITY NOTES

- SYMBOLS OF ACCESSIBILITY SHALL BE PROVIDED AT THE FOLLOWING LOCATIONS:
  - ACCESSIBLE PARKING SPACES.
  - ACCESSIBLE PASSENGER LOADING ZONES.