

GLAZING LEGEND

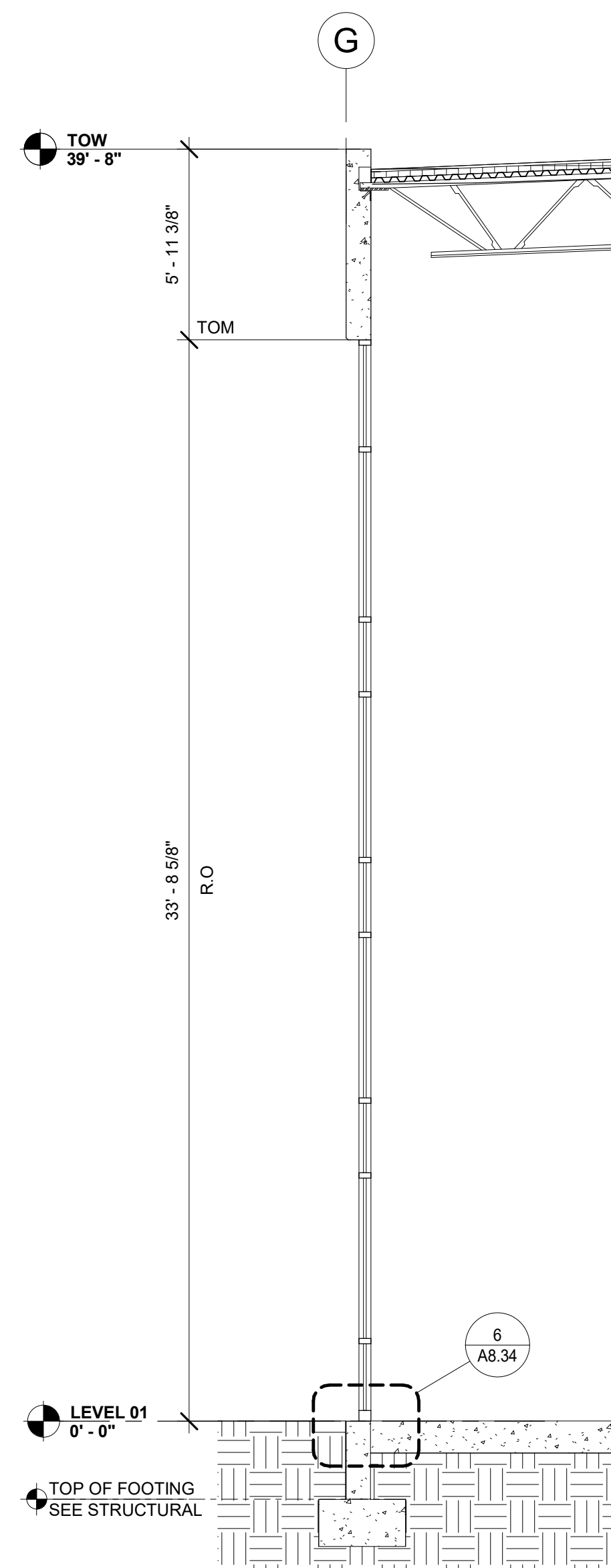
- GL-01 - INSULATED GLAZING UNIT
1 INCH THICK WITH 1/4" THICK CLEAR LITES AND LOW-E COATING
(SEE ENERGY CALCULATIONS FOR REQUIREMENTS)
[ENSURE ENERGY CALCULATIONS INCLUDE SHGC AND VT VALUES]
- GL-02 - TEMPERED SAFETY GLAZING
TYPE GL-01 WITH TEMPERED SAFETY GLAZING
- GLAZING TYPE TAG

ELEVATION NOTES

- TOW = TOP OF CONCRETE + 1-1/2" BLOCKING
- EXTERIOR SIDE OF CONCRETE PANELS SHALL RECEIVE THE FOLLOWING:
 - ONE (1) COAT PRIMER AND ONE (1) COAT MEDIUM TEXTURE PAINT
 - WARRANTY: 10 YEARS
- EXTERIOR HOLLOW METAL DOORS AND FRAMES SHALL BE FACTORY PRIMED AND RECEIVE TWO (2) COATS ALKYD SEMI-GLOSS PAINT.
- DOWNSPOUT GUARDS SHALL RECEIVE TWO (2) COATS ALKYD SEMI-GLOSS PAINT.
- COPINGS, SCUPPER BOXES, AND DOWNSPOUTS SHALL BE PAINTED TO MATCH ADJACENT WALL COLOR.

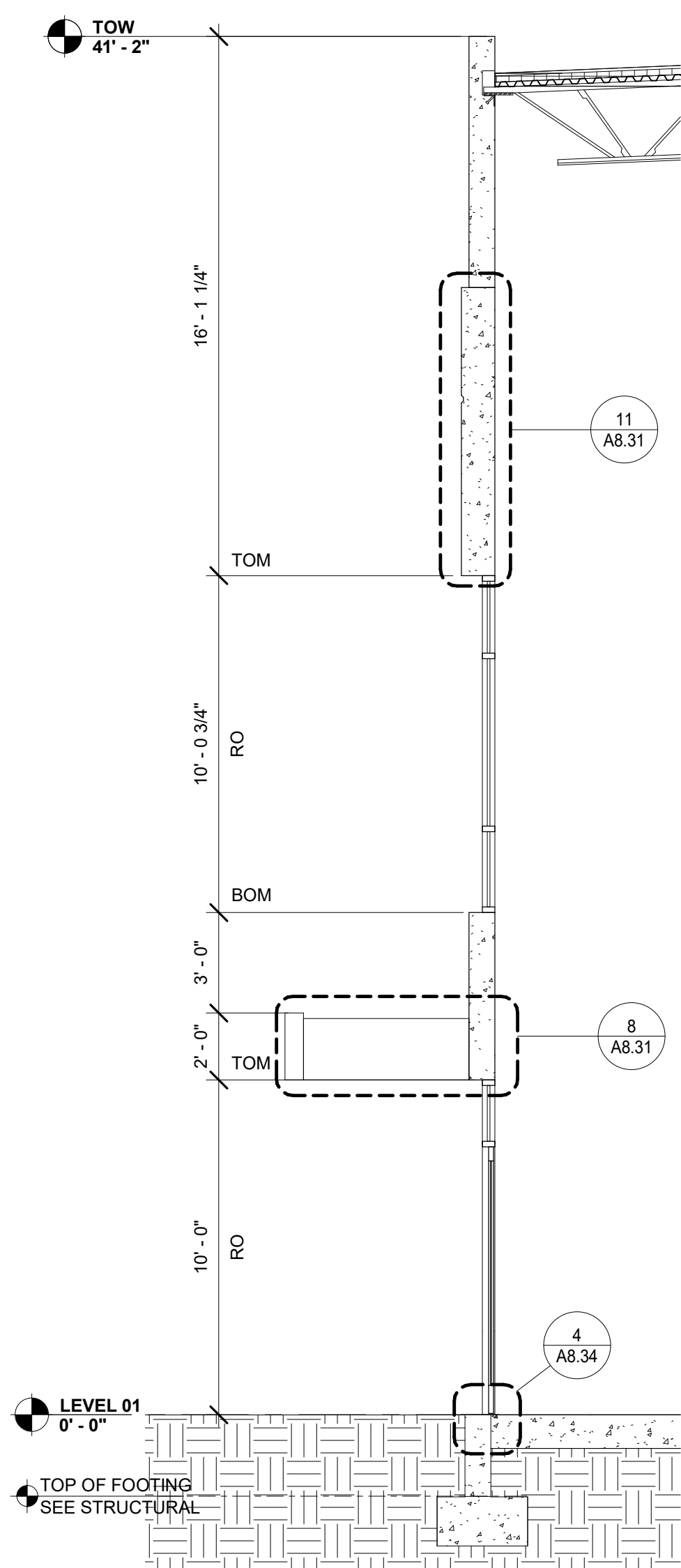
SHEET NOTES

- 206 ALUMINIUM STOREFRONT SYSTEM.
401 CONCRETE PANEL PAINTED WITH MEDIUM TEXTURE PAINT.
412 LINE OF INTERIOR ROOF DRAIN LEADER BEYOND.



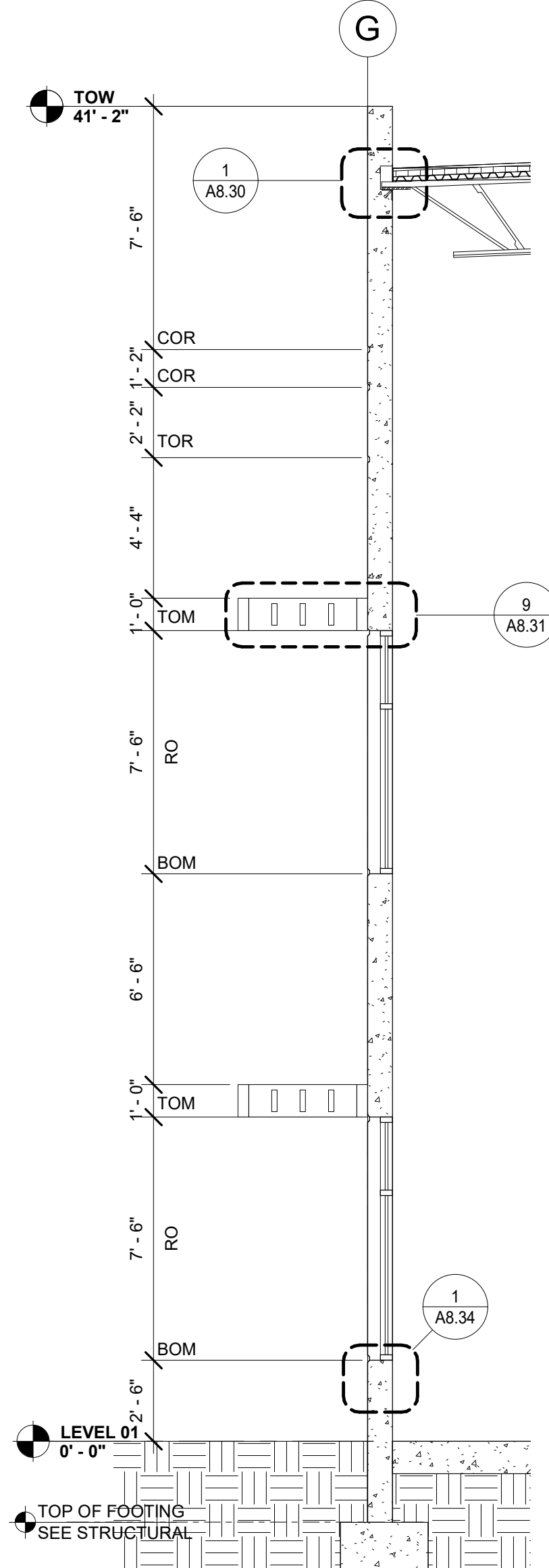
SECTION - SF

SCALE: 1/4" = 1'-0"



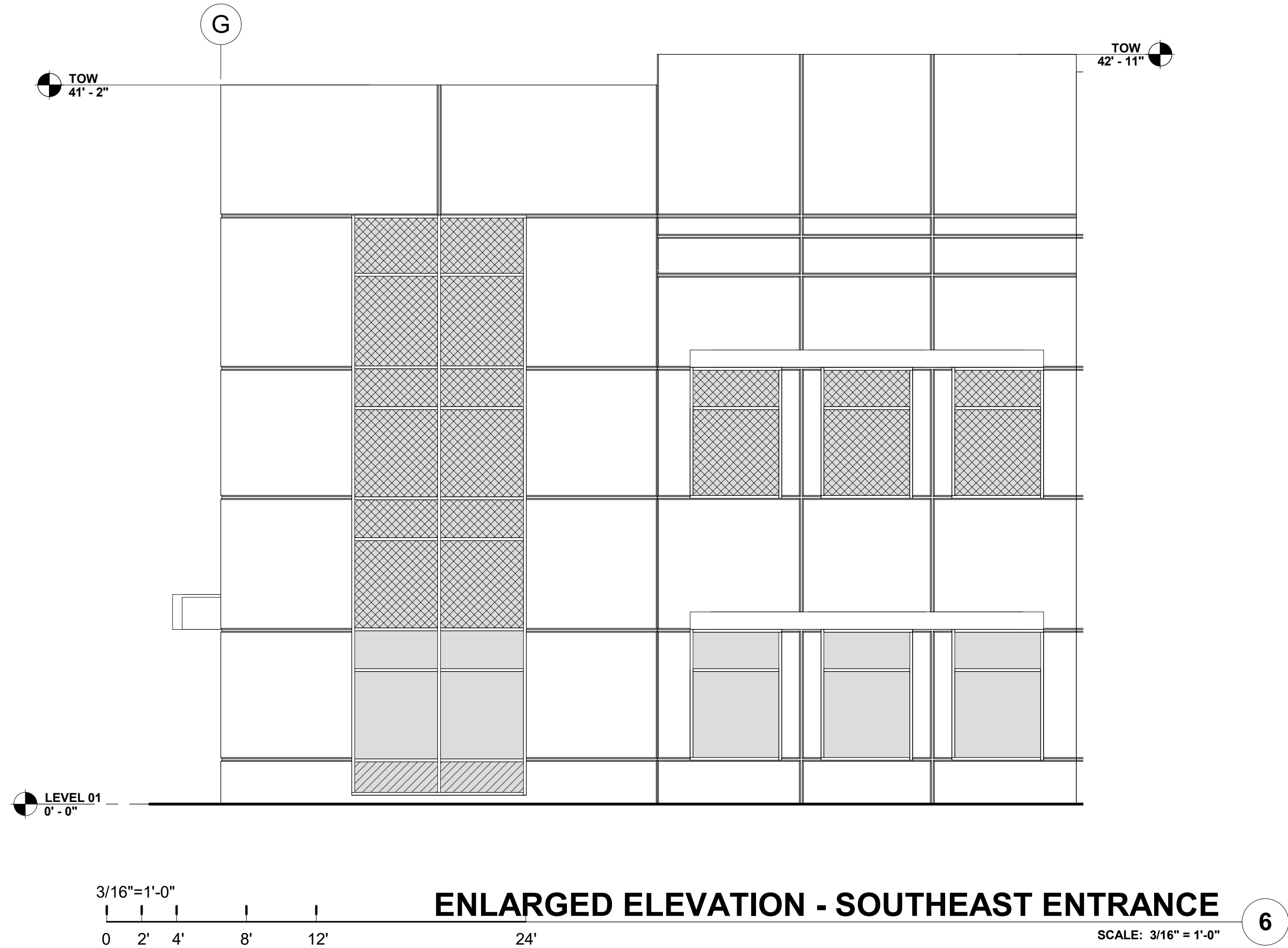
SECTION - SF DOOR

SCALE: 1/4" = 1'-0"



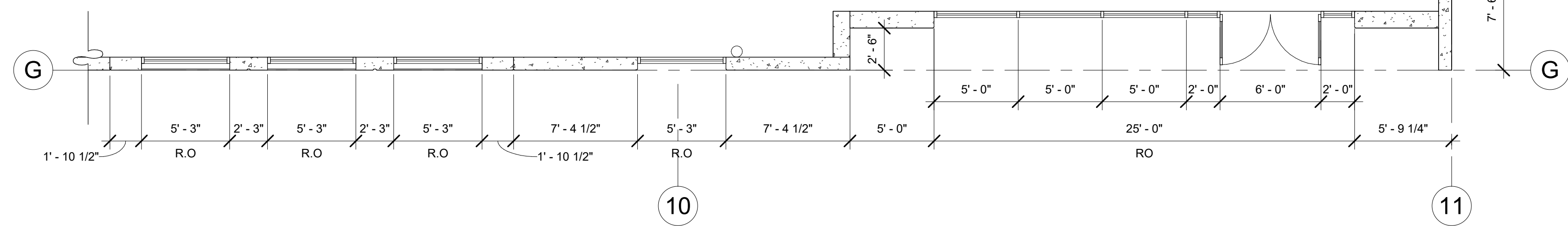
SECTION - SUNSHADES

SCALE: 1/4" = 1'-0"



ENLARGED ELEVATION - SOUTHEAST ENTRANCE

SCALE: 3/16" = 1'-0"



ENLARGED PLAN - SOUTHEAST ENTRANCE

SCALE: 3/16" = 1'-0"