

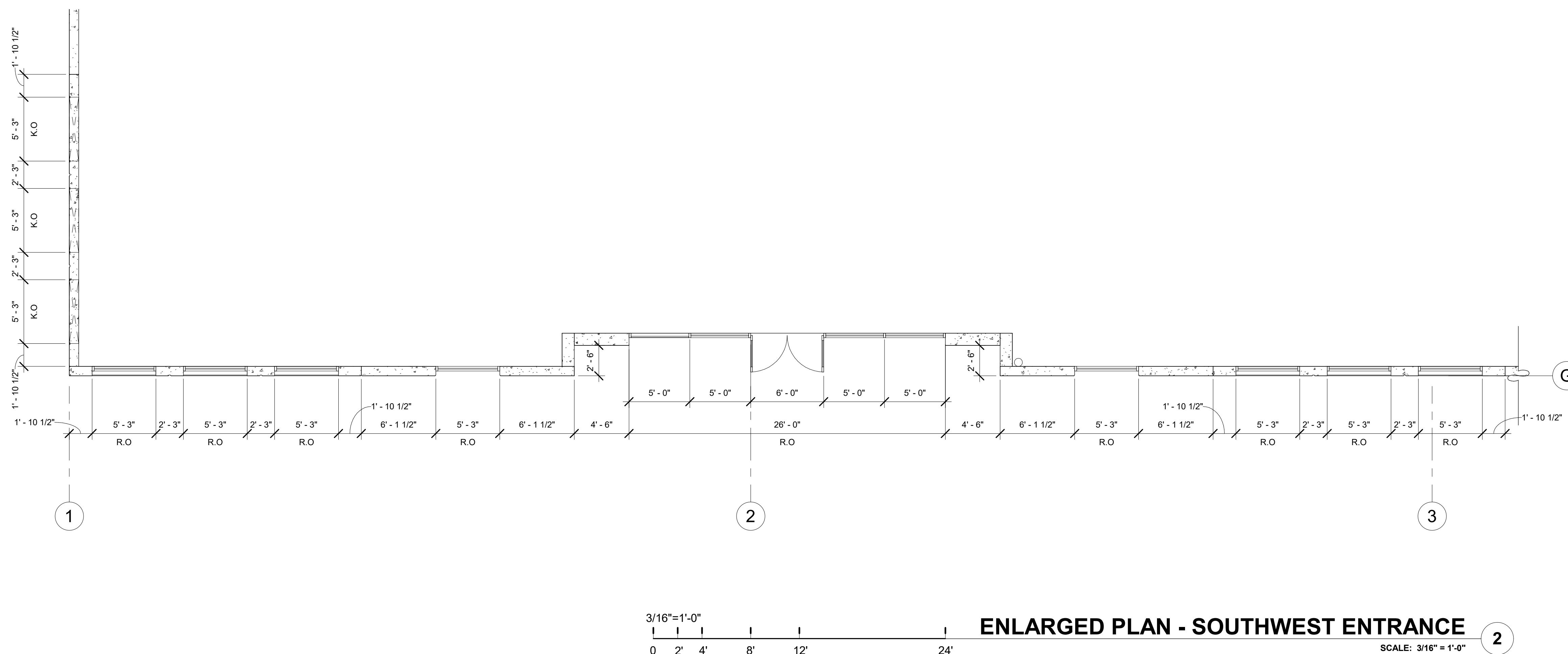
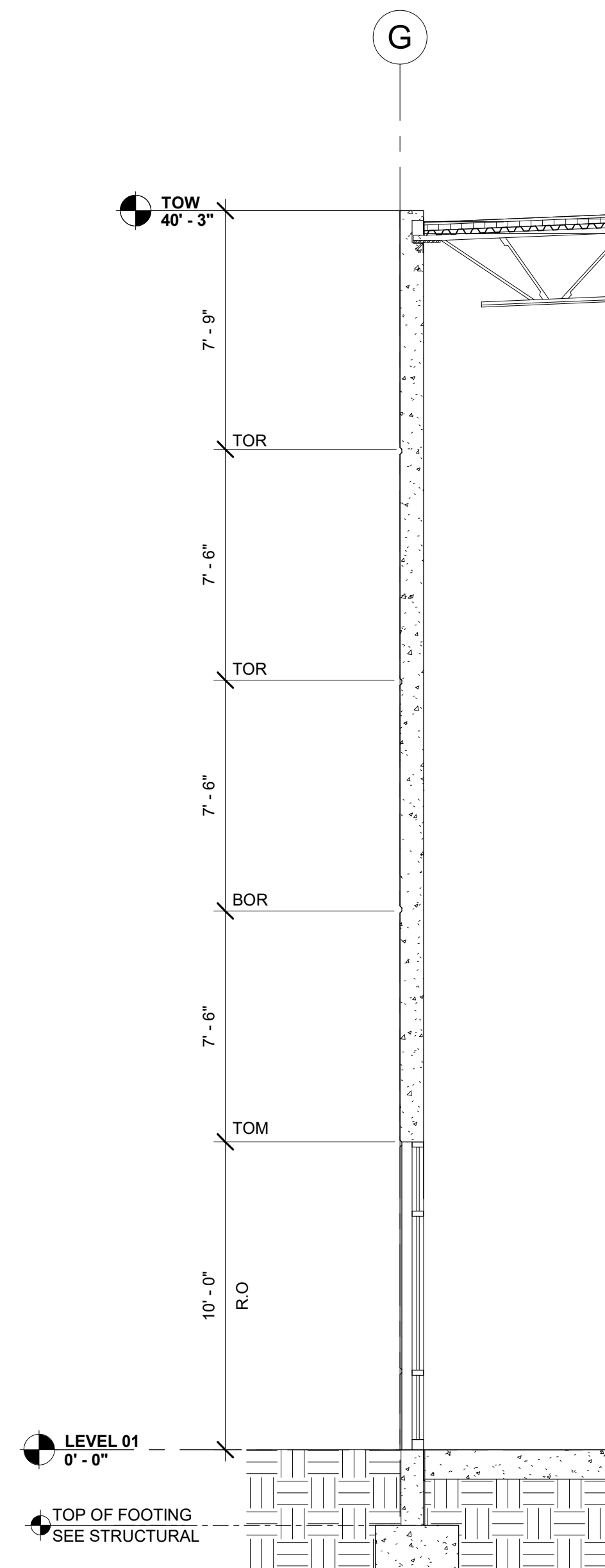
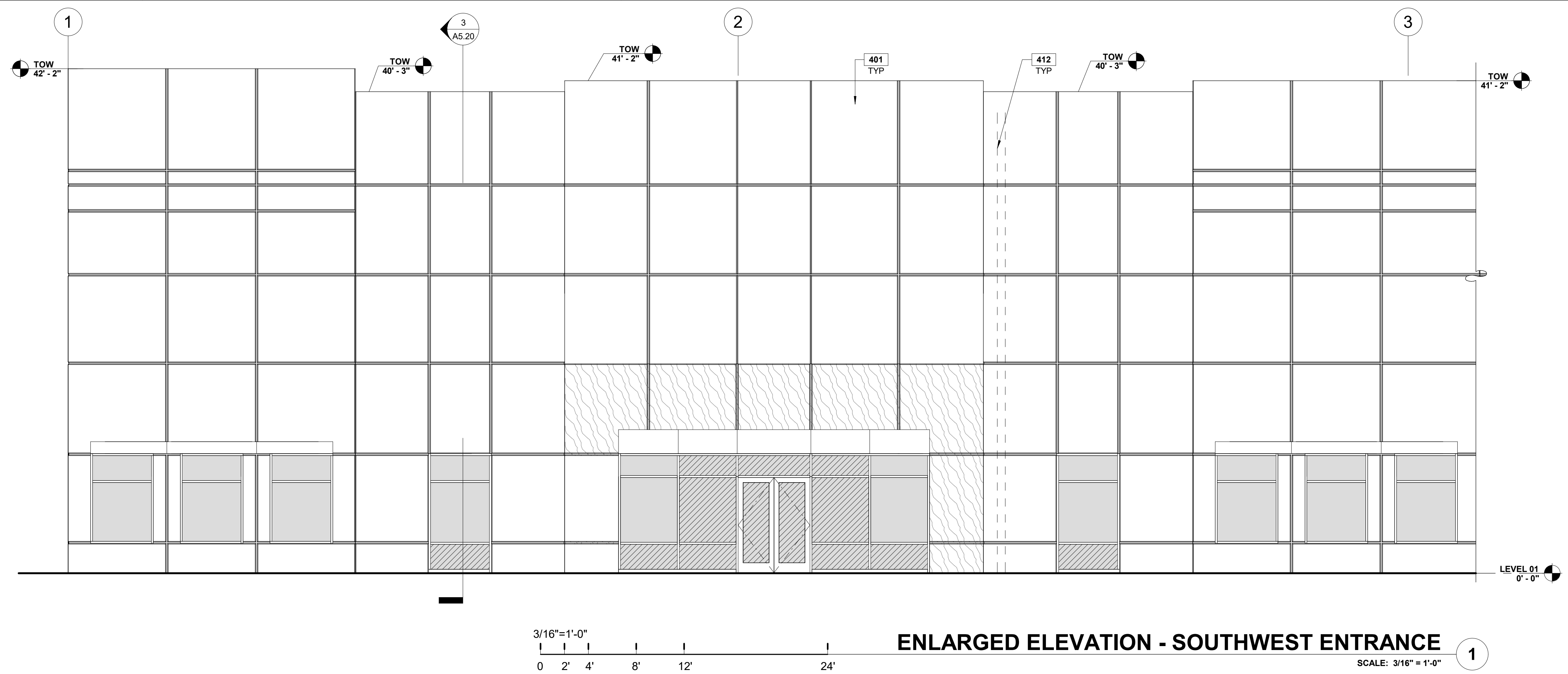
 **GL-01 - INSULATED GLAZING UNIT**
1 INCH THICK WITH 1/4" THICK CLEAR LITES AND LOW-E COATING
(SEE ENERGY CALCULATIONS FOR REQUIREMENTS)
[ENSURE ENERGY CALCULATIONS INCLUDE SHGC AND VT VALUES]

 **GL-02 - TEMPERED SAFETY GLAZING**
TYPE GL-01 WITH TEMPERED SAFETY GLAZING

 **GLAZING TYPE TAG**

1. TOW = TOP OF CONCRETE + 1-1/2" BLOCKING
2. EXTERIOR SIDE OF CONCRETE PANELS SHALL RECEIVE THE FOLLOWING:
 - * ONE (1) COAT PRIMER AND ONE (1) COAT MEDIUM TEXTURE PAINT
 - * WARRANTY: 10 YEARS
3. EXTERIOR HOLLOW METAL DOORS AND FRAMES SHALL BE FACTORY PRIMED AND RECEIVE TWO (2) COATS ALKYL SEMI-GLOSS PAINT.
4. DOWNSPOUT GUARDS SHALL RECEIVE TWO (2) COATS ALKYL SEMI-GLOSS PAINT.
5. COPINGS, SCUPPER BOXES, AND DOWNSPOUTS SHALL BE PAINTED TO MATCH ADJACENT WALL COLOR.

401 CONCRETE PANEL PAINTED WITH MEDIUM TEXTURE PAINT.
412 LINE OF INTERIOR ROOF DRAIN LEADER BEYOND.



FIRE PROTECTION ENGINEER
J.A. COMUNALE
 900 NEWPARK DRIVE
 ARBORTON, OH 44203

A5.20