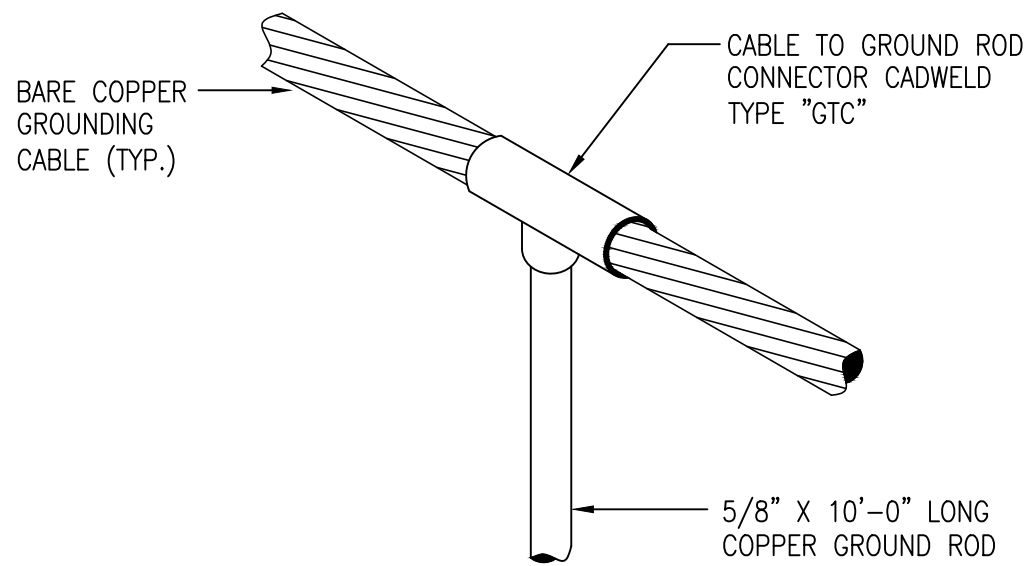
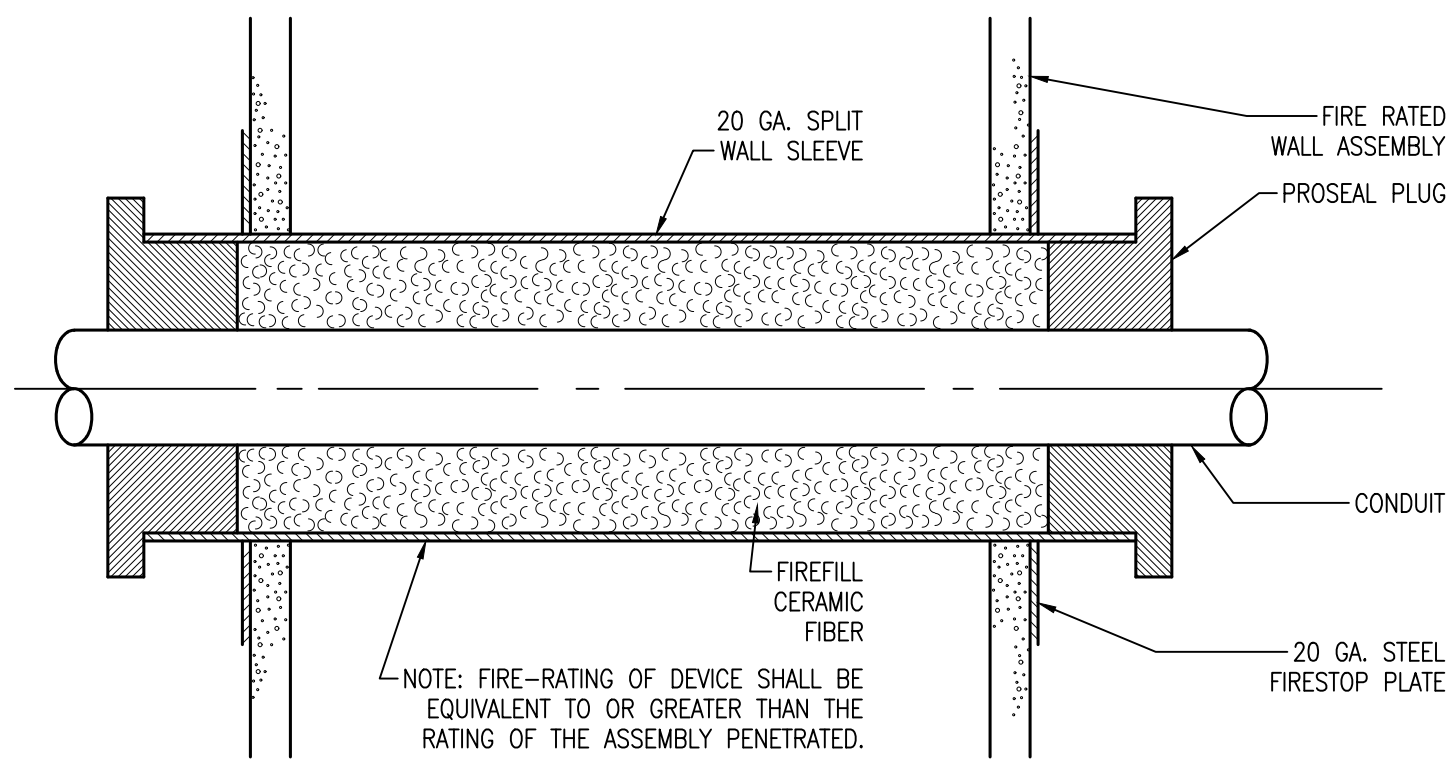


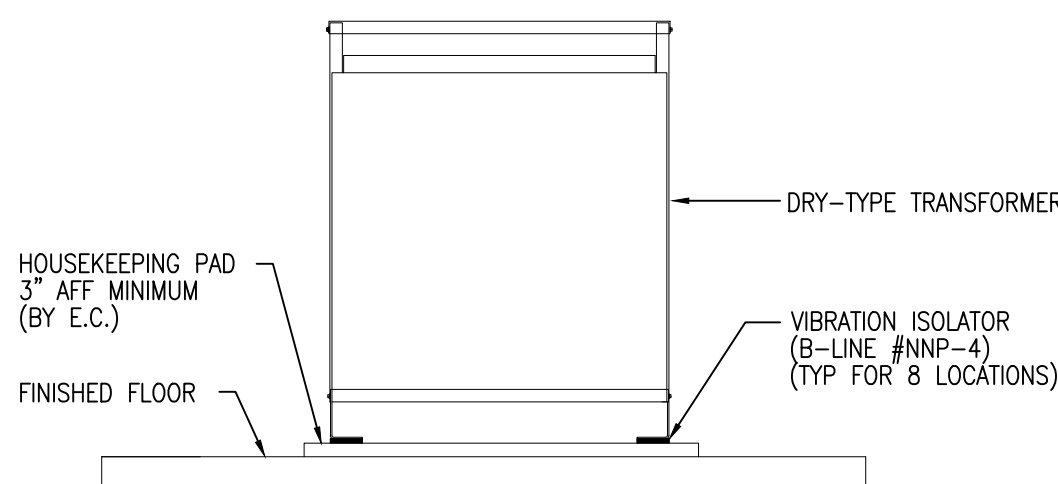
TYPICAL EXHAUST FAN ON ROOF
SCALE: NONE



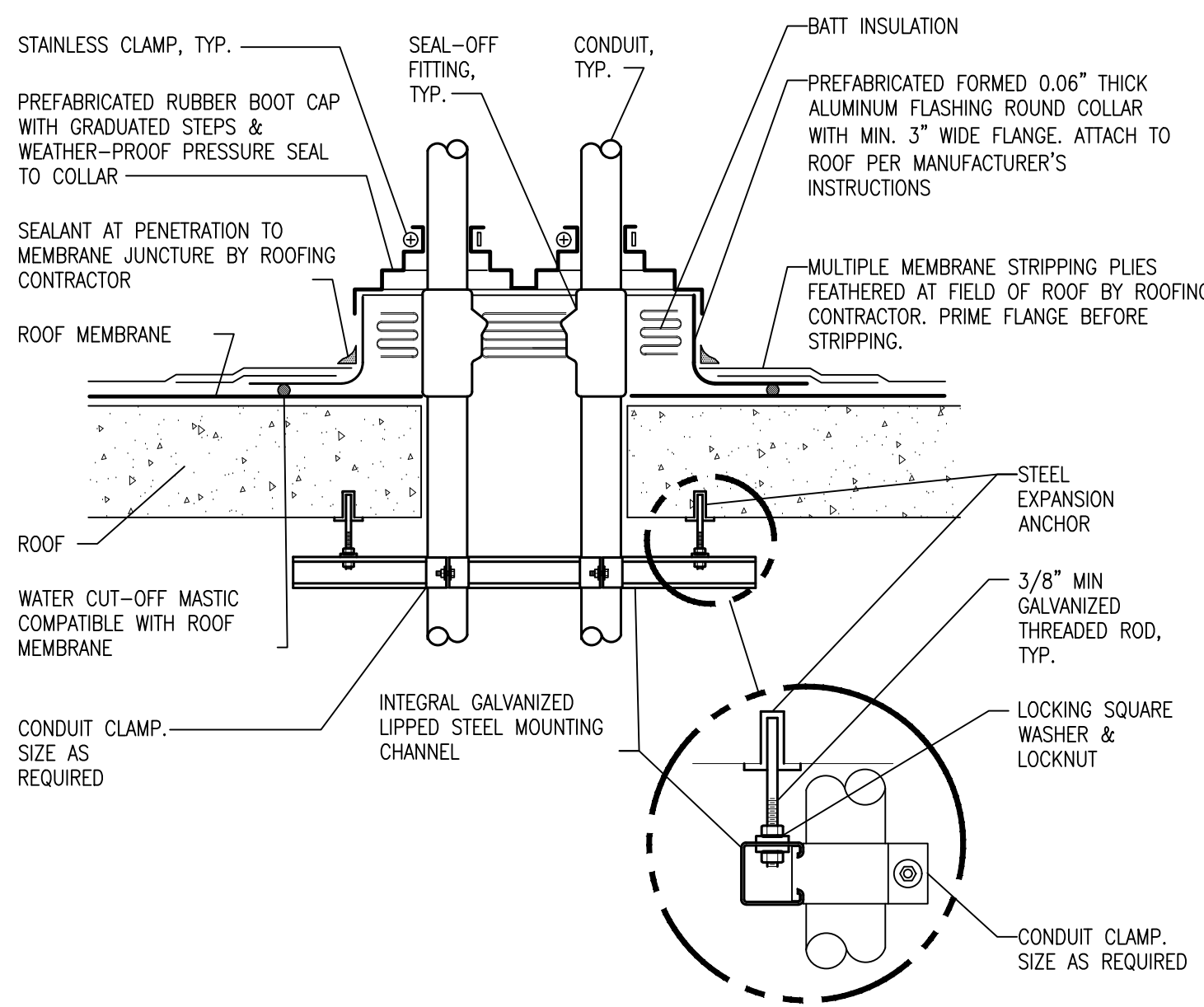
CONTINUOUS CABLE TO
GROUND ROD CONNECTION
SCALE: NONE



CONDUIT THROUGH
FIRE RATED WALL
SCALE: NONE

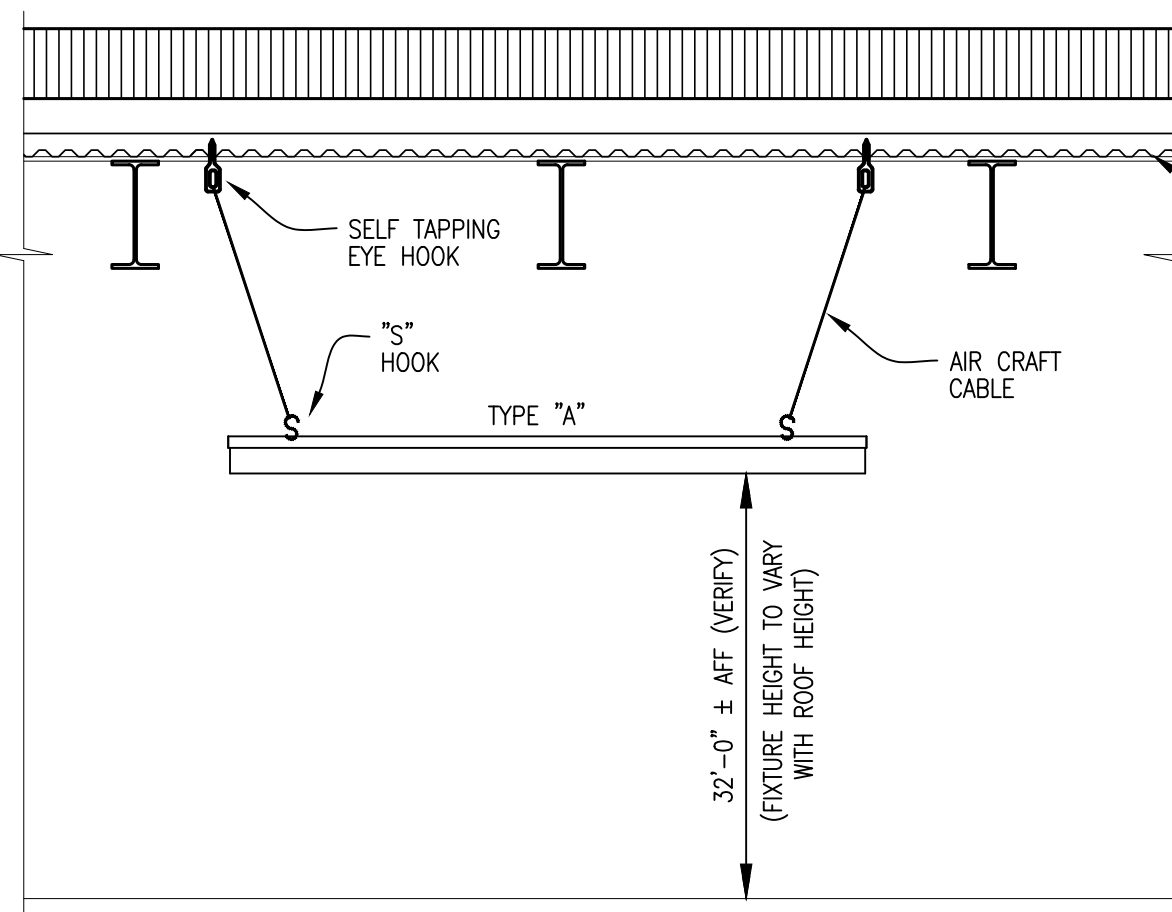


TRANSFORMER FLOOR MOUNTING DETAIL
SCALE: NONE

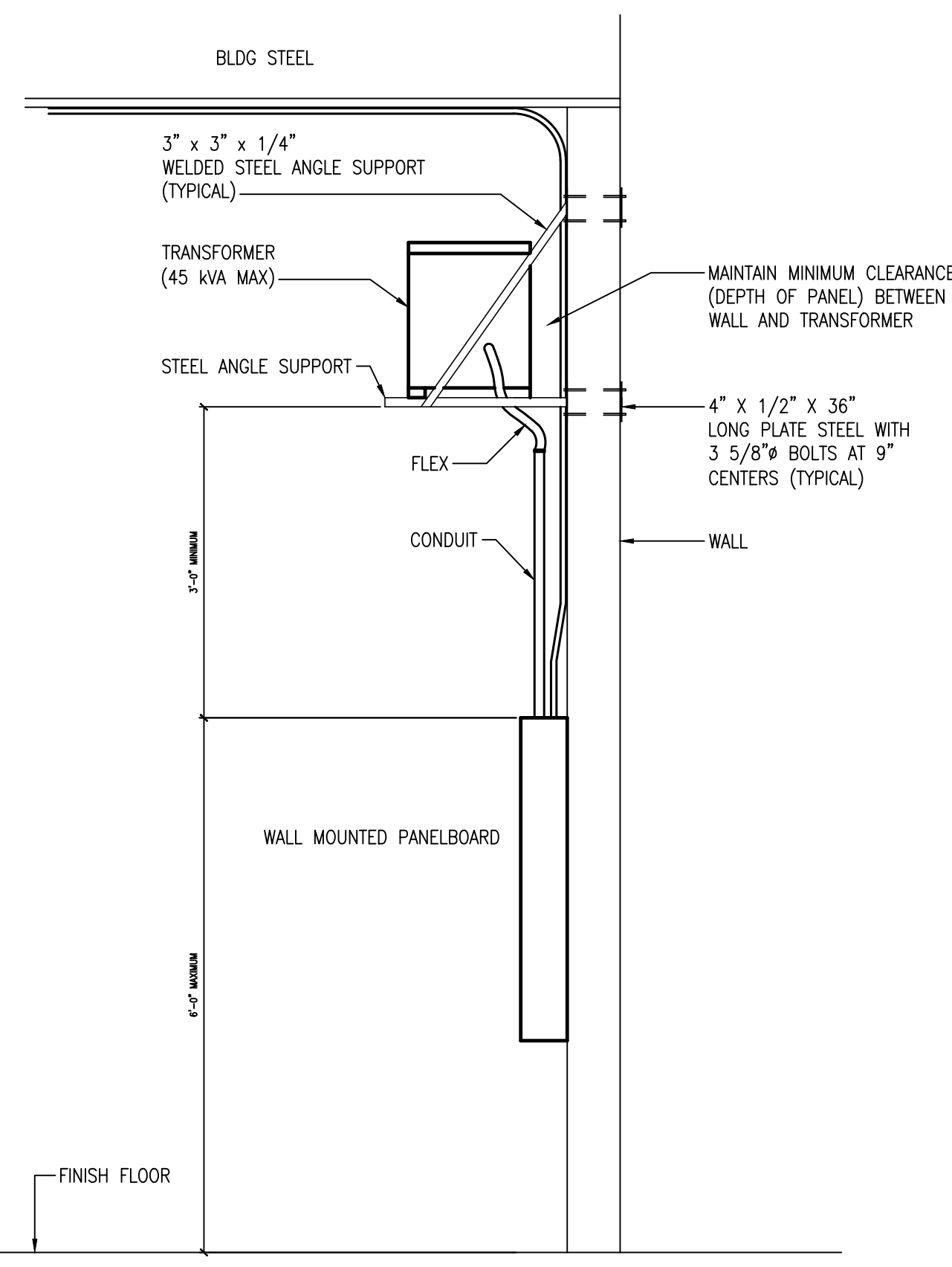


TYPICAL ROOF PENETRATION DETAIL
SCALE: NONE

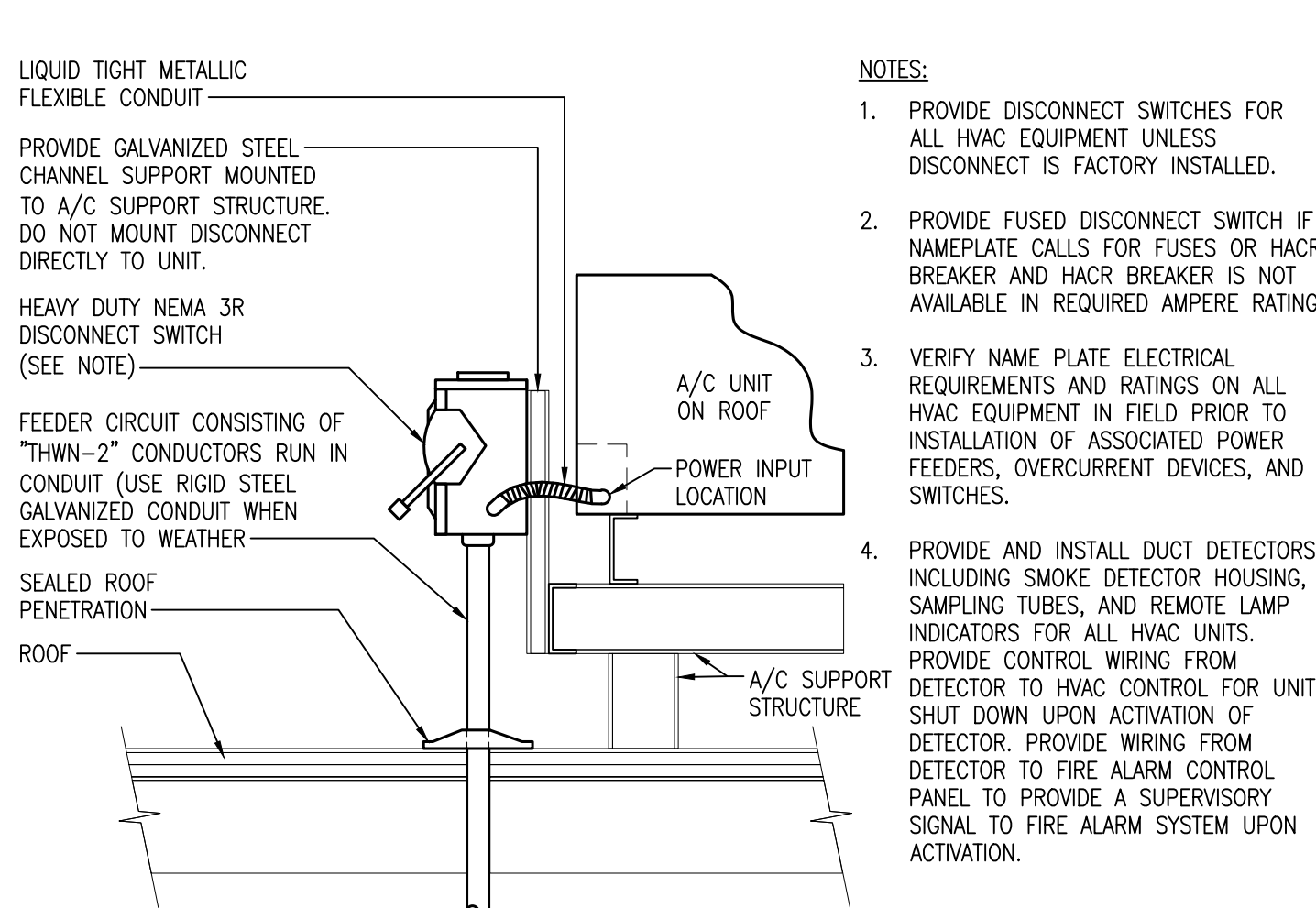
- NOTES:
1. MAINTAIN A MINIMUM CLEARANCE OF 12" [308mm] ON ALL SIDES OF ROOF PENETRATION FROM WALLS, CURBS, AND OTHER PROJECTIONS TO FACILITATE PROPER FLASHING.
 2. FLANGES OF ADJACENT FLASHINGS SHALL NOT BE CUT OR OVERLAPPED.
 3. VERIFY ROOF & STRUCTURAL SYSTEM WITH ARCHITECT & STRUCTURAL ENGINEER.
 4. COORDINATE FLASHING INSTALLATION WITH ROOFING CONTRACTOR TO ENSURE PROPER METHODS & MATERIALS ARE USED TO MAINTAIN ROOF WARRANTY.



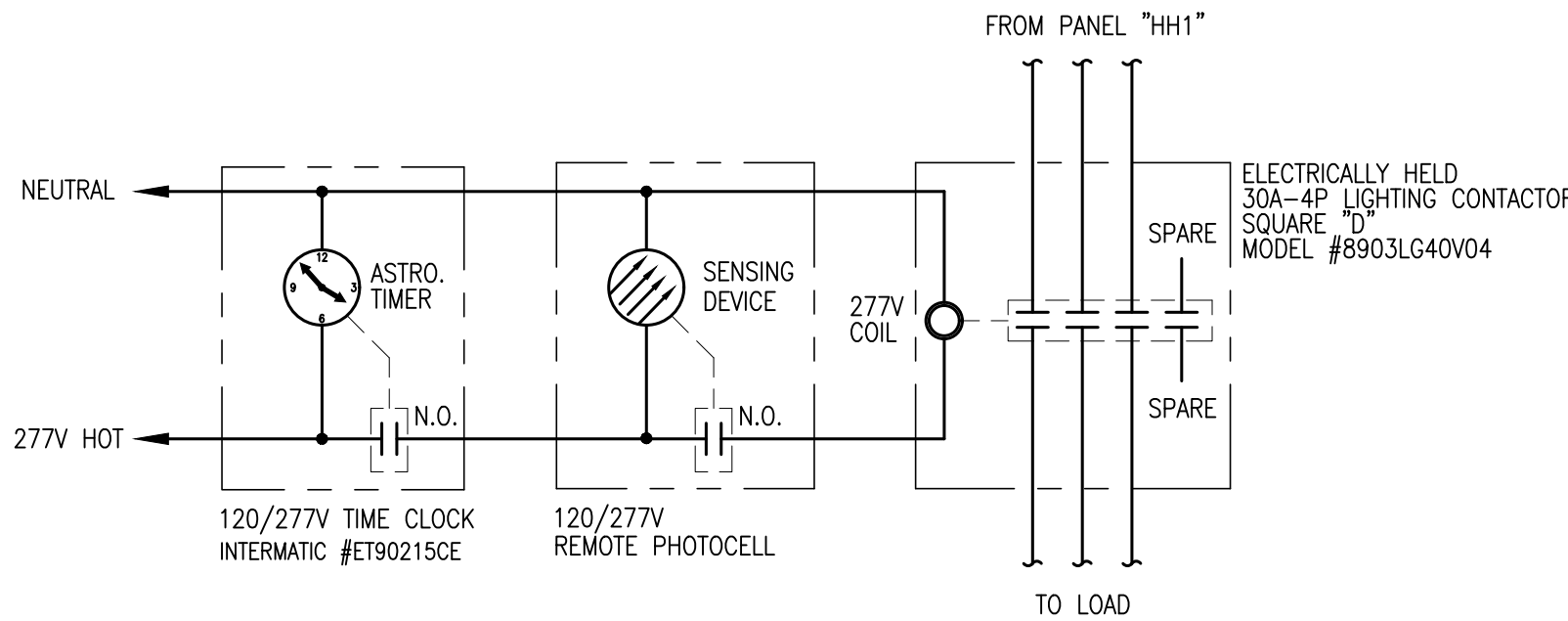
FIXTURE TYPE "A" MOUNTING DETAIL
SCALE: NONE



TRANSFORMER WALL MOUNTING DETAIL
SCALE: NONE

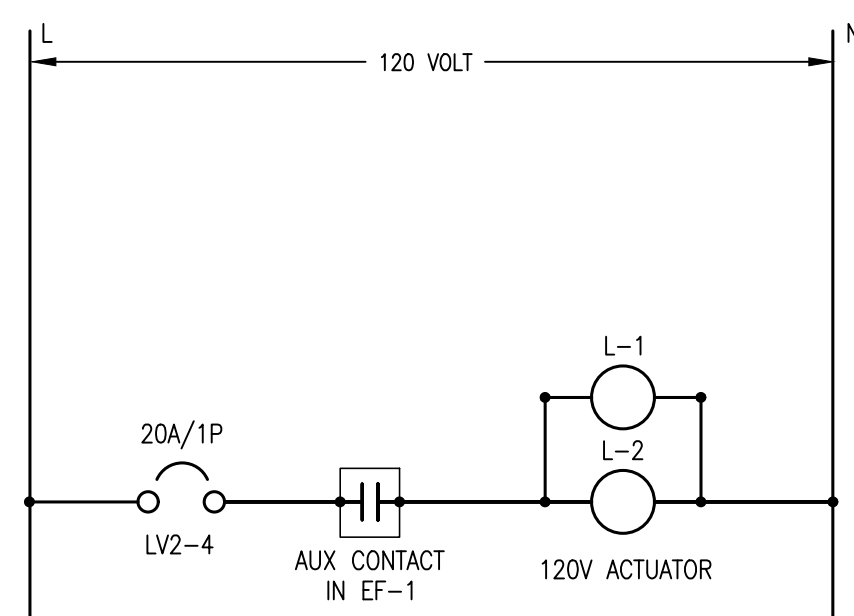


HVAC EQUIPMENT
INSTALLATION ON ROOF
SCALE: NONE



TIMECLOCK/PHOTOCELL SCHEMATIC DIAGRAM
SCALE: NONE

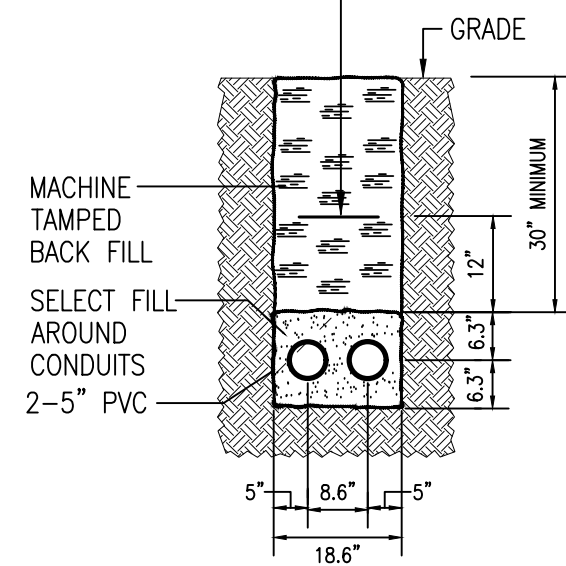
- NOTES:
1. LOCATE TIMECLOCK & LIGHTING CONTACTOR NEXT TO PANEL "HH1" COORDINATE LOCATION & ORIENTATION OF REMOTE PHOTOCELL DEVICE W/ ARCHITECT.
 2. E.C. SHALL COORDINATE TIMECLOCK SETTINGS W/ OWNER AS PART OF A COMPLETE INSTALLATION.
- OPERATION
1. TIME CLOCK IS SET TO TURN LIGHTS OFF AT A TIME TO BE DETERMINED. BY THE END USER. PHOTOCELL MAY STILL BE CLOSED BUT AN OPEN CONTACT IN THE TIMECLOCK KEEPS THE LOAD OFF.
 2. TIME CLOCK IS SET TO GO "ON" AT A TIME TO BE DETERMINED BY THE END USER. THE CONTACT IN THE TIMECLOCK WILL CLOSE BUT THE PHOTOCELL CONTACT WILL BE OPEN, KEEPING THE LIGHTS OFF.
 3. PHOTOCELL CONTACT WILL CLOSE AT DUSK COMPLETING THE CIRCUIT AND TURNING THE LOAD ON.
 4. SEQUENCE BEGINS AGAIN.



MOTOR OPERATED LOUVER SCHEMATIC
SCALE: NONE

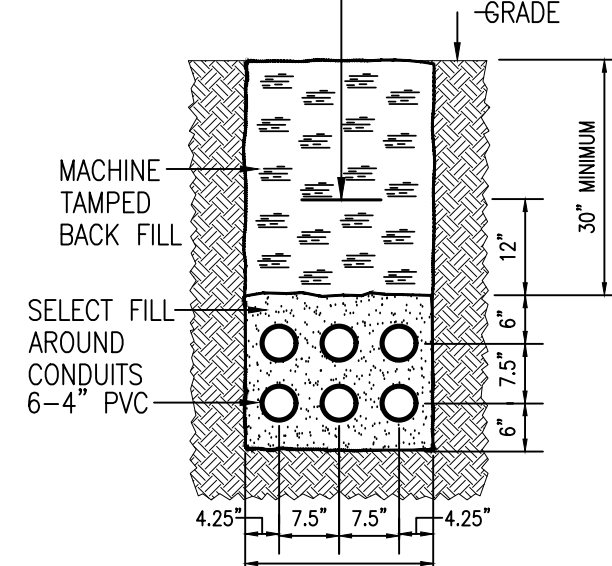
- NOTES:
1. DETAIL IS TYPICAL FOR LOUVERS L-1 THRU L-3 & EXHAUST FANS EF-1 & EF-2
 2. SEE BELOW & PANEL SCHEDULES ON E6.0 FOR FURTHER INTERLOCKING INFORMATION
 - L-1 & L-2 INTERLOCKED WITH EF-1
 - L-3 INTERLOCKED WITH EF-2
 3. VERIFY ALL LOUVER INTERLOCKING WITH APPROVED MECHANICAL DRAWINGS.

TRACEABLE MARKER TAPE
CONTINUOUS BLACK WITH YELLOW
BACKGROUND TO READ
"CAUTION-CAUTION-CAUTION
ELECTRIC LINE BURIED BELOW"



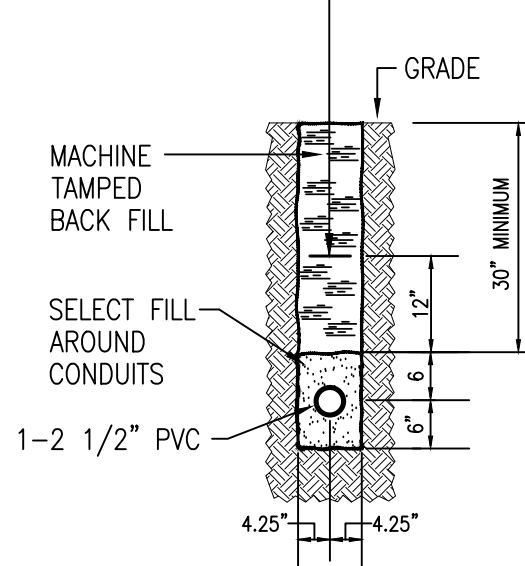
SECTION "A-A" PRIMARY
DUCT BANK DETAIL
SCALE: NONE

TRACEABLE MARKER TAPE
CONTINUOUS BLACK WITH YELLOW
BACKGROUND TO READ
"CAUTION-CAUTION-CAUTION
ELECTRIC LINE BURIED BELOW"

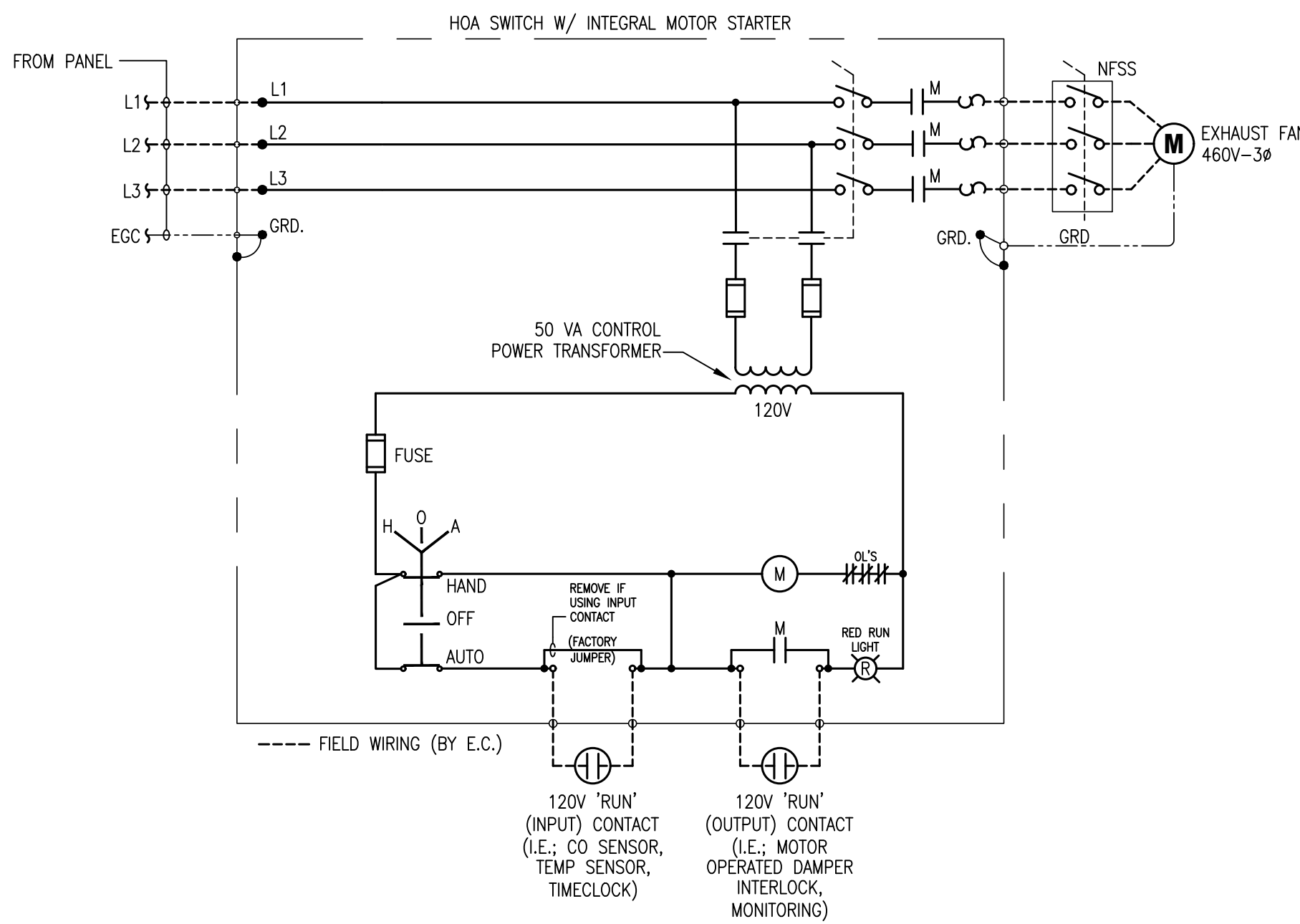


SECTION "B-B"
DUCT BANK DETAIL
SCALE: NONE

TRACEABLE MARKER TAPE
CONTINUOUS BLACK WITH YELLOW
BACKGROUND TO READ
"CAUTION-CAUTION-CAUTION
ELECTRIC LINE BURIED BELOW"

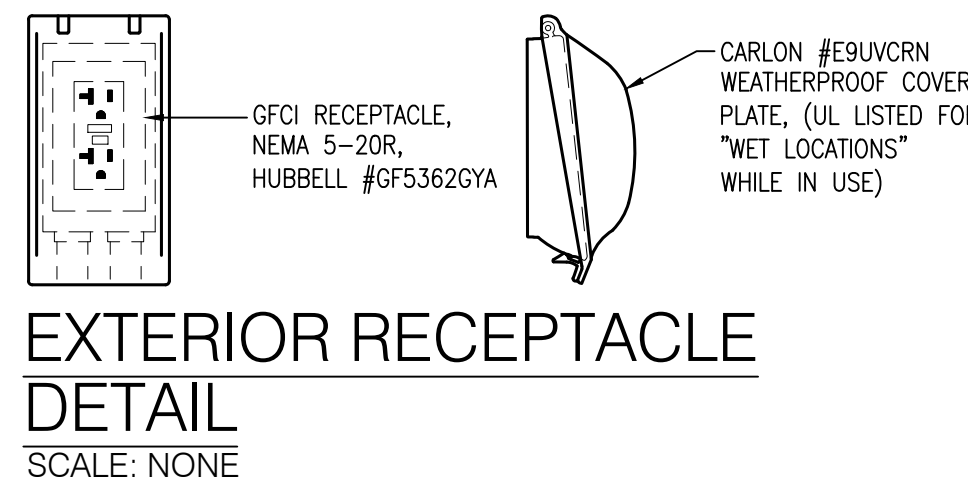


SECTION "C-C"
DUCT BANK DETAIL
SCALE: NONE

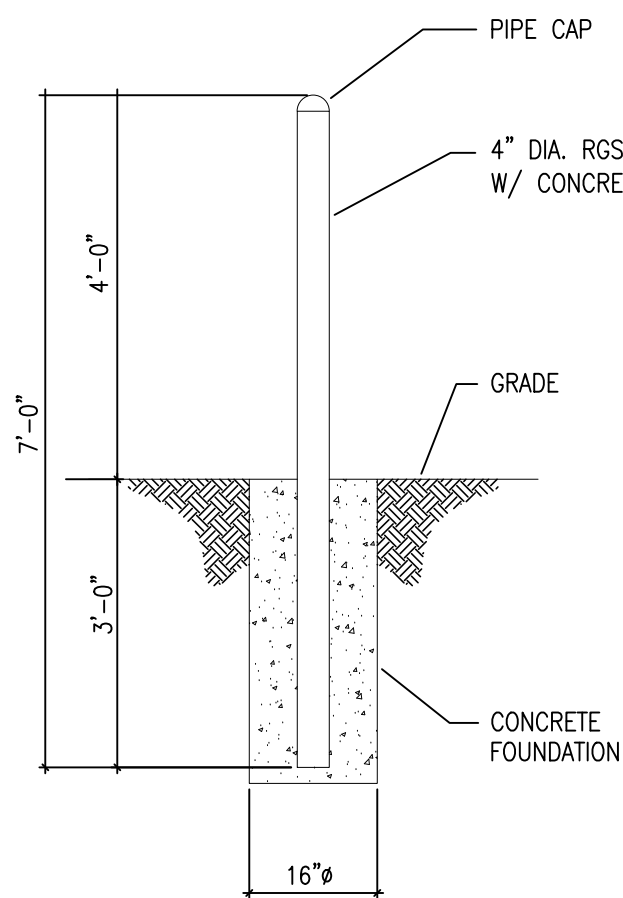


TYPICAL 3-PHASE EXHAUST FAN
CONTROL SCHEMATIC
SCALE: NONE

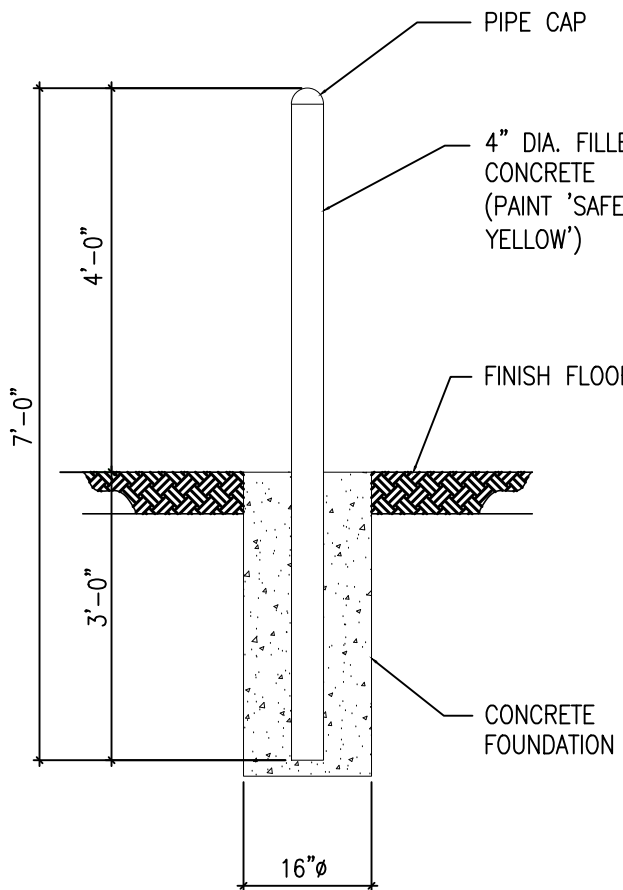
- NOTES:
- THIS SCHEMATIC IS DIAGRAMMATICAL AND DOES NOT INDICATE ALL INTEGRAL WIRING OR COMPONENTS, NOR EXACT CONFIGURATIONS. COORDINATE FINAL CONTROL/INTERLOCK REQUIREMENTS WITH GC, MC, OWNER, MANUFACTURER'S RECOMMENDATIONS, APPROVED SHOP DRAWINGS, AND EQUIPMENT NAMEPLATES. THE EC SHALL PROVIDE ALL FIELD WIRING AND ANY DEVICES NOT PROVIDED BY OTHERS, INCLUDING ALL NECESSARY CONDUCTORS, RACEWAYS, AND HARDWARE, AS REQUIRED FOR A COMPLETE INSTALLATION.



EXTERIOR RECEPTACLE
DETAIL
SCALE: NONE



EXTERIOR BOLLARD DETAIL
SCALE: NONE



INTERIOR BOLLARD DETAIL
SCALE: NONE
NOTE:
1. ALL BOLLARDS ARE BY OTHERS.

DESIGNER / BUILDER

ARCO
DESIGN/BUILD

44 SOUTH BROADWAY, SUITE 1003
WHITE PLAINS, NY 10601
P: 914.821.5535 F: 914.306.6010

ADB / DESIGN SERVICES

PROJECT TITLE
**ROCKLAND
LOGISTICS
CENTER BLDG 2**
25 OLD MILL RD.
SUFFERN, NY 10901

OWNER
BROOKFIELD PROPERTIES
1 MEADOWLANDS PLAZA SUITE 802
EAST RUTHERFORD, NJ 07073

ARCHITECT
ADB / DESIGN SERVICES LLC
44 SOUTH BROADWAY, SUITE 1003
WHITE PLAINS, NY 10601

CIVIL ENGINEER
DYNAMIC ENGINEERING CONSULTANTS
1904 MAIN STREET
LAKE COMO, NJ 07719

STRUCTURAL ENGINEER
ADB STRUCTURAL ENGINEERING
325 S. ALABAMA ST. SUITE 200
INDIANAPOLIS, IN 46204

MECHANICAL ENGINEER
NATIONAL DESIGN BUILD SERVICES
11840 BORMAN DRIVE
MARYLAND HEIGHTS, MO 63146

ELECTRICAL ENGINEER
FXB ENGINEERING
5 CHRISTY DRIVE, SUITE 307
CHADDS FORD, PA 19317

PLUMBING ENGINEER
MC CARTHY ENGINEERING
2500 E HIGH STREET, SUITE 630
POTTSTOWN, PA 19464

FIRE PROTECTION ENGINEER
S.A. COMUNALE
2900 NEWPARK DRIVE
BARBERTON, OH 44203

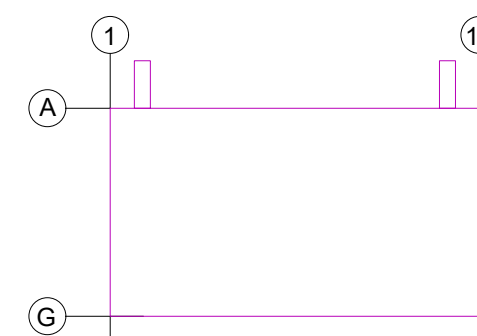
SEAL

NY License #: 077635-1
NY License Expiration Date: 04/30/2026



Peter J. Bonni

KEY PLAN



SUBMITTALS

NO.	DATE	DESCRIPTION
A	11.20.2024	ISSUE FOR REVIEW
B	02.02.2024	ISSUE FOR REVIEW
C	02.09.2024	ISSUE FOR PERMIT

PROJECT NO.
AS397-22 | NY154

DRAWN BY
NGF

SHEET TITLE
**ELECTRICA
DETAILS**

SHEET NO.

E7.0